



**Napi's Vision Statement:**

*Napi Elementary School, a community of families, students, and staff will work to ensure the very best education for all our children through teaching, guidance, support, and structure.*

**Napi's Mission Statement:**

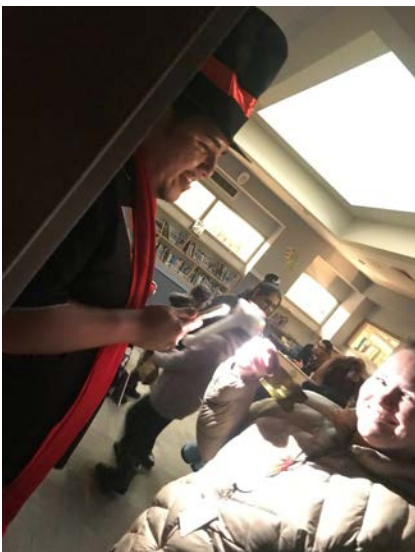
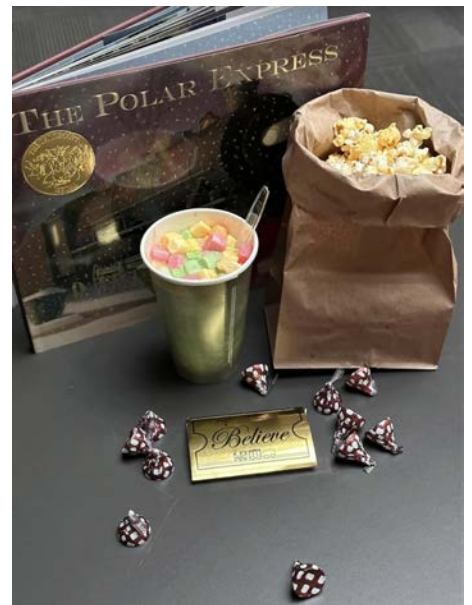
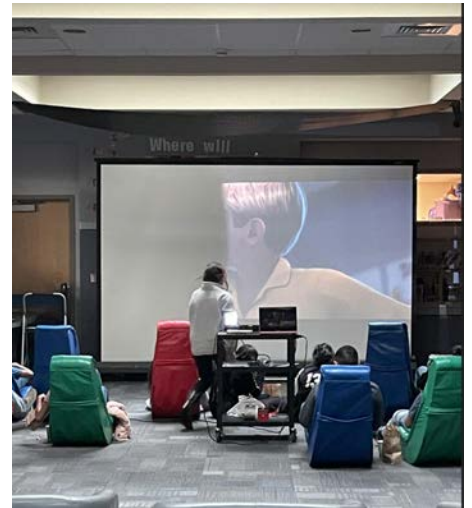
*Napi Elementary School is committed to providing high-quality instruction and support to promote the highest achievement of all students, both academically and behaviorally.*

**January Board Report**

**Principals:** December was one of the shortest months, with 12 days of school, but had the most activities happening. Holiday recitals, sledding trips, crazy weather, school activities, holiday parties, and WIDA testing kept everyone moving over the last three weeks!

**December's Family Night**

December's Family Night theme was: 'Entering the Polar Express! All Aboard!' Napi Specialists created the perfect Polar Express experience on Thursday, December 8th. Golden Tickets were needed to enter the event, hot cocoa and marshmallows were available, and a hard copy of the 'Polar Express' book was provided to every family!



Mr. Tail checking to make sure Mrs. Tail has a Golden Ticket to enter the Polar Express!







## Acts of Kindness--Submitted by Ms. Augare



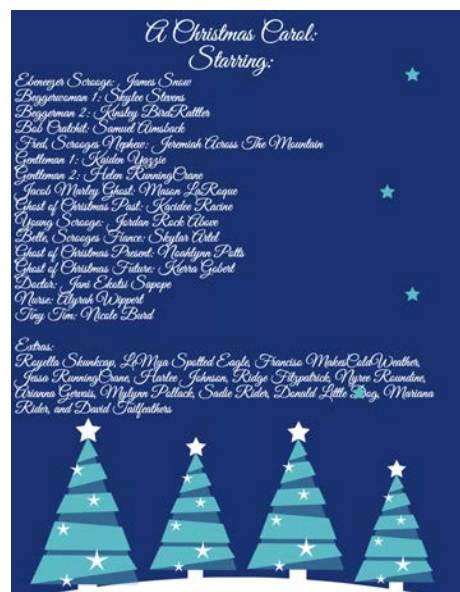
We are learning new ways on how to spread kindness, so we thought why not make a few christmas trees with kindness ornaments, the students each made their own tree ornament with a way on how to be kind or what being kind looks like. We decided to make these in the hallway so that other students and staff can see how there are other ways of spreading kindness through the days and holidays.

### 10 Days of Christmas

At Napi we wanted to share the joy and spirit of Christmas with our Napi family. We hosted a 10 days of Christmas for all staff. Staff enjoyed the activities, great food, and over all company of each other daily. Our 10 days of Christmas included a christmas cookie exchange, a hot cocoa bar, a breakfast bar, a christmas photo booth, and a coffee and donut bar. This helped keep the spirit of the holidays with our staff and was enjoyed by all!

## Holiday Program

Mr. Tail and the Napi Specialists team collaborated with our talented Napi students to create a wonderful holiday recital for all to enjoy! Mr. Tail decided he wanted the students to have the option of having a play this year, and decided to produce 'A Christmas Carol' with the help of his team and talented students. We are very proud of all of our students' performances! Once again, the Napi TA Team went above and beyond and created a Winter Wonderland for students and parents to enjoy! A huge thank you to Mr. HeavyRunner for putting up a tipi! It was a first for our school and provided an energy of thankfulness and positivity!







### Sledding Trip

Play can even help relieve stress and support the development of critical social-emotional skills, including communication and cooperation. And, when we encourage routine play, it can provide a powerful healing tool that reduces trauma's effects by building trust and boosting positive emotions. Sledding has proven to be very beneficial for youth interaction. Thus, the reason the

4th-grade incentive for sledding was our go-to choice for social-emotional healing.--Submitted by Mr. Wells

During our sledding field trip, we had fun. We slid down a steep, snowy slope. We crashed into each other. We laughed hard as we tipped over. We raced faster than Lightning McQueen. We buried ourselves in the snow. It felt warm and fuzzy like summer sand. The snow was two feet deep. We lost our neon blue-green sleds. We flopped in the snow to be goofy. We jumped, we hit a bump, and we fell off our sleds. We had a wonderful day with our classmates on the sledding field trip. ---Submitted by Mrs. Whitford's Class









### Holiday Gifts for Students

Napi Students received a holiday gift bag filled with goodies before leaving on break. Students received their Toy for Tot gift, a Napi Strong T-shirt, and snacks. We look forward to seeing them again in the New Year!



### WIDA Testing

Wida testing started at Napi on December 5th. Below is the number of students completed after one week. We will continue to test up to winter break, and pick up in January when we return. Deadline for all WIDA tests to be completed is February 2023 and we are confident we will be completed by the end of January 2023.

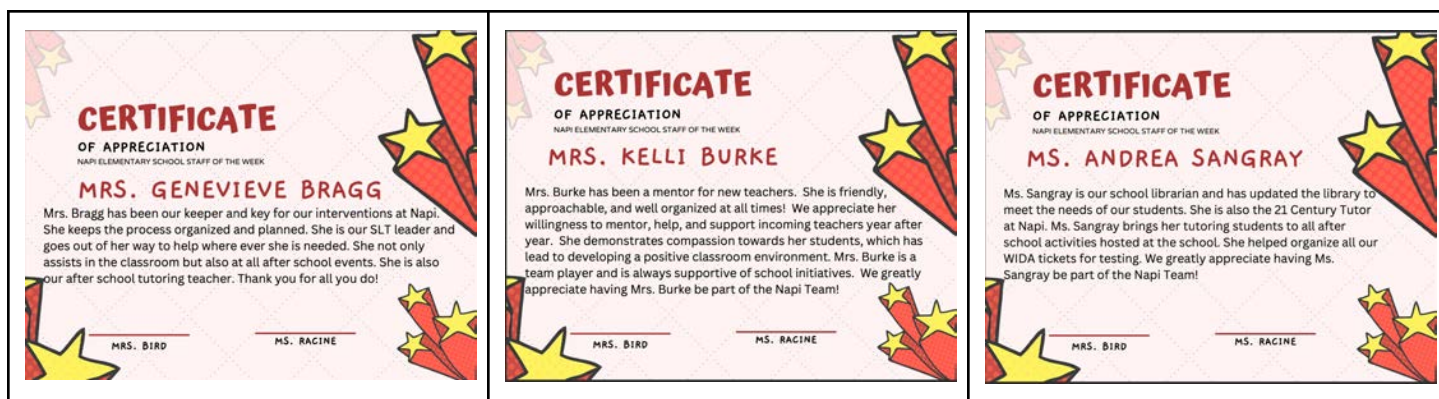
## December 2022

Student Summary			
Assessment ▲	# of Students Not Started	# of Students In Progress	# of Students Completed
Domain: Listening			
Listening Gr 4-5	34	4	91
Domain: Reading			
Reading Gr 4-5	48	4	77
Domain: Speaking			
Speaking Gr 4-5	91	8	30
Domain: Writing			
Writing Gr 4-5	117	5	7

## January 2023


Student Summary			
Assessment ▲	# of Students Not Started	# of Students In Progress	# of Students Completed
Domain: Listening			
Listening Gr 4-5	25	2	102
Domain: Reading			
Reading Gr 4-5	34	3	92
Domain: Speaking			
Speaking Gr 4-5	60	5	64
Domain: Writing			
Writing Gr 4-5	64	10	55

## December Staff of the Week Certificates





## December Student Shout Outs

<p><b>SHOUT OUT</b> </p> <p>From: Mrs. Harrell 12-2-22</p> <p>To Jordan Rock Above for helping Mrs. Harrell when she fell and shoveling the steps.</p>	<p><b>SHOUT OUT</b> </p> <p>From: Mrs. Butterfly 12-2-22</p> <p>To Dillion Little Dog for helping others with volleyball drills in the gym.</p>	<p><b>SHOUT OUT</b> </p> <p>From: Mr. Heavy Runner 12-2-22</p> <p>To Skylar Artel for being kind and remembering all her lines for the play.</p>	<p><b>SHOUT OUT</b> </p> <p>From: Mr. Tail 12-2-22</p> <p>To Toby Meineke being dedicated to his role in the Christmas recital.</p>
<p><b>SHOUT OUT</b> </p> <p>From: Mr. Wells 12-9-22</p> <p>I choose Hunter Guardipee for our class "kindness" shout out for being kind to students who didn't have sleds. Mr. Guardipee would let them sit with him while he would slide down.</p>	<p><b>SHOUT OUT</b> </p> <p>From: Ms. Linke 12-9-22</p> <p>Marissa Rose for her sweet spirit and kind attitude towards everyone around her.</p>	<p><b>SHOUT OUT</b> </p> <p>From: Mrs. Whitford 12-9-22</p> <p>Drayden Smith and Cole Wagner carried my black sleds on and off the bus.</p>	<p><b>SHOUT OUT</b> </p> <p>From: Mr. Neverez 12-9-22</p> <p>Avalon Gobert for being helpful to her desk neighbors and always make sure they are on the right pages during lessons.</p>
<p><b>SHOUT OUT</b> </p> <p>From: Mrs. Peterson 12-16-22</p> <p>Skylee Stevens for making sure she gives her classmates "put ups" every day instead of put-downs! Ryleigh AfterBuffalo for working hard this whole month in ELA!</p>	<p><b>SHOUT OUT</b> </p> <p>From: Mr. Bryant 12-16-22</p> <p>Alexis Augare - Over the course of a year and a half Alexis has never one day had negative attitude, nor has she ever said a negative word to anyone. Alexis is the benchmark in kindness and positivity!</p>	<p><b>SHOUT OUT</b> </p> <p>From: Mr. Berthelson 12-16-22</p> <p>Shout out to Kelvin Butterfly, he took time to help a student with a math lesson when the student had missed class that week! Shout out to Taya Little Plume, she swept up the classroom without being asked after a messy art project and did a terrific job!</p>	<p><b>SHOUT OUT</b> </p> <p>From: Ms. Salois 12-16-22</p> <p>Shoutout to Devon Taylor for helping his classmates carry their books and for helping another student make deliveries. Also, shoutout to Helen Running Crane for sharing pizza with several other teachers, TAs, and our office staff.</p>
<p><b>SHOUT OUT</b> </p> <p>From: Ms. Guardipee 12-16-22</p> <p>I would like to give a shout out to Millie White Quills for always being a helping hand whether it be with me or her classmates.</p>	<p><b>SHOUT OUT</b> </p> <p>From: Mrs. Burke 12-16-22</p> <p>I would like to recognize Toby Meineke, he is considerate of his classmates and always takes the time to ask how people are doing.</p>	<p><b>SHOUT OUT</b> </p> <p>From: Mrs. Armstrong. 12-16-22</p> <p>Adam for having a kind heart. Scotty for working hard.</p>	

## December Attendance

<b>Students</b>	<b>4th Grade--72%</b>	<b>5th Grade--70%</b>	<b>School--71%</b>
-----------------	-----------------------	-----------------------	--------------------

## Instructional Coaches: Submitted by Mrs. Wagner

Mrs. Wagner and Mrs. Bragg had a great December! We not only helped make Napi a festive place for our students, but we assisted in most, if not all activities during the holiday season! We also assisted with the testing of 21 fourth and fifth graders taking the WIDA test. During the last week of school before the break, both coaches also assisted in make up testing. The family literacy activity was also attended and assisted by Mrs. Bragg and she also continued with after school tutoring activities for the month. Both coaches provided coverage where needed on days

where we needed assistance. The coaches also helped Ms. Racine plan and carry out the 12 Days of Christmas for staff, including the Secret Santa and staff appreciation dinner!

Both coaches have continued conducting walkthroughs and provided support to teachers as needed, keeping their coaching trackers up to date. We hosted our literacy consultant, Debbie Hunsaker on December 1st and 2nd, and performed walkthroughs as well. We revamped and updated our small group instruction framework with the principals and continued with our coaching cycles with staff. Currently, Mrs. Wagner has four active cycles and Mrs. Bragg has five active cycles for December.

### **Spookanapi--Submitted by Mrs. Wells**

The Month of December Spokinaapi helped provide snow gear to students in need. Thanks to Families in Transition for always working with Mr. Andreas and I to make sure students have their clothing needs met. Irene Augare and her amazing staff are always quick to respond and provide donations to the Napi clothing closet, with the help of their amazing team we are able to dress students that may have forgotten snow gear or were in need of items to attend the sledding trip.

Spokinaapi has also participated in the preparation for the annual Napi Christmas Program. All the specialists combine classes in the gymnasium to practice their Christmas songs. It's always a joyous time for everyone to be together and practice being in a large social setting.

Spokinaapi helped with the Polar Express Family Literacy night, which was really fun with a big turn out. Parents and students were given a golden ticket and a Polar Express book to enter the movie where they received a bag of popcorn, candy, hot cocoa topped with marshmallows.

Spokinaapi continues to support students' social and emotional needs by providing a safe space for them to take 5 and learn some self-regulation skills. My door is always open for students during lunch so they have the option to play in the Spokinaapi office during their recess.