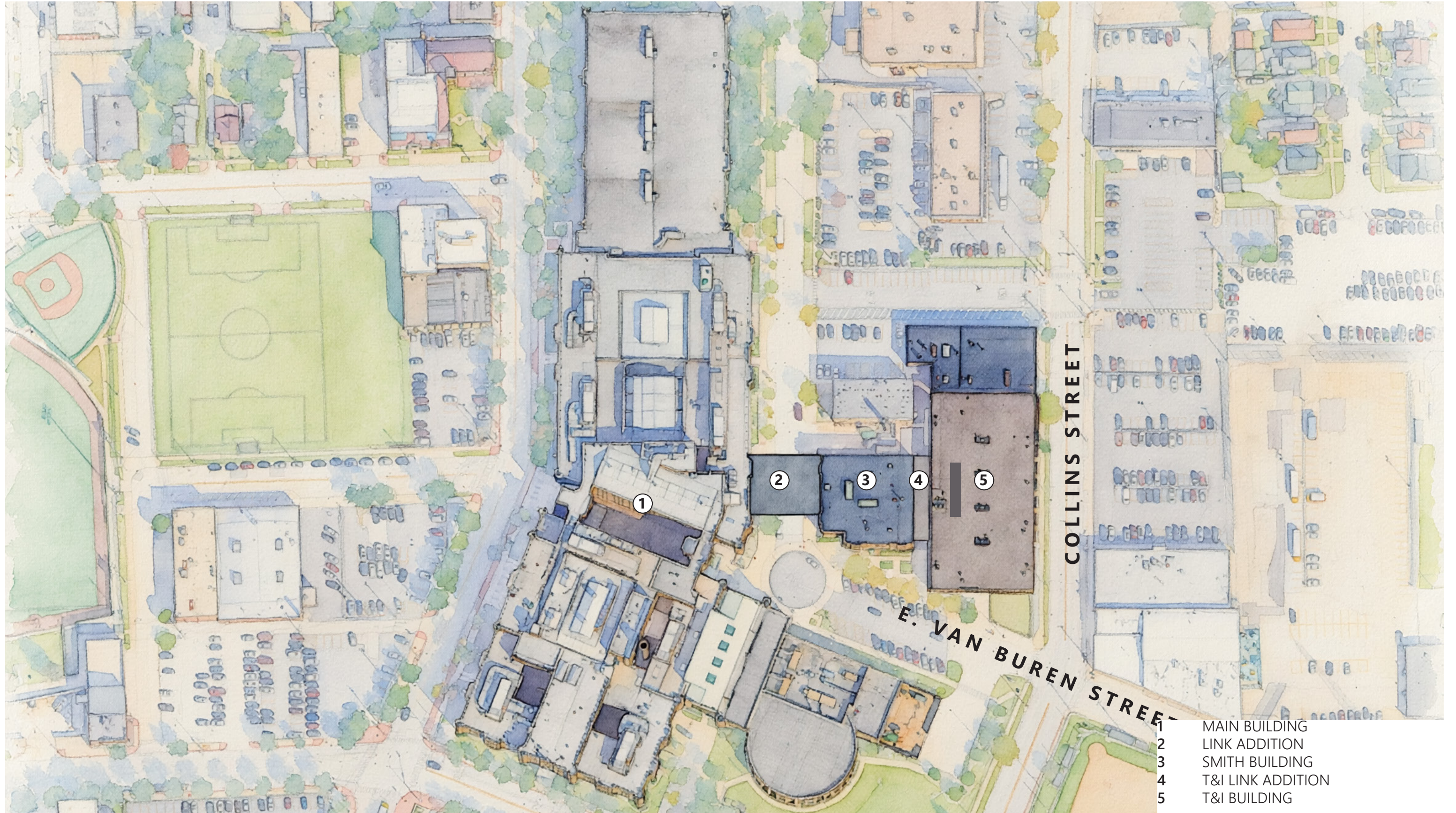




Joliet Township High School District 204 · JOLIET CENTRAL PHASE 3

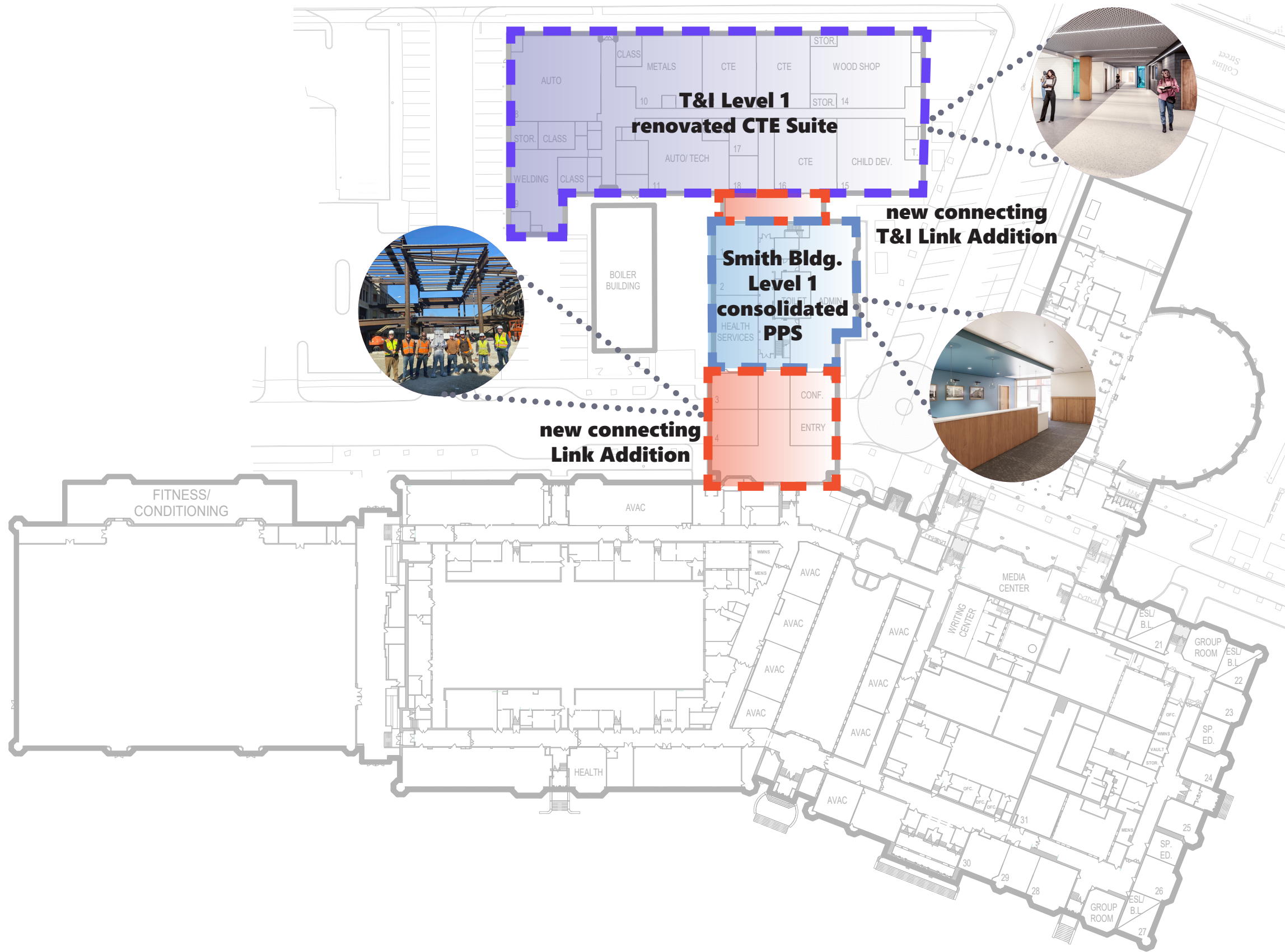
BOARD OF EDUCATION PRESENTATION · 05/19/2026

CONCEPT DESIGN
JOLIET CENTRAL CAMPUS PLAN



- 1 MAIN BUILDING
- 2 LINK ADDITION
- 3 SMITH BUILDING
- 4 T&I LINK ADDITION
- 5 T&I BUILDING

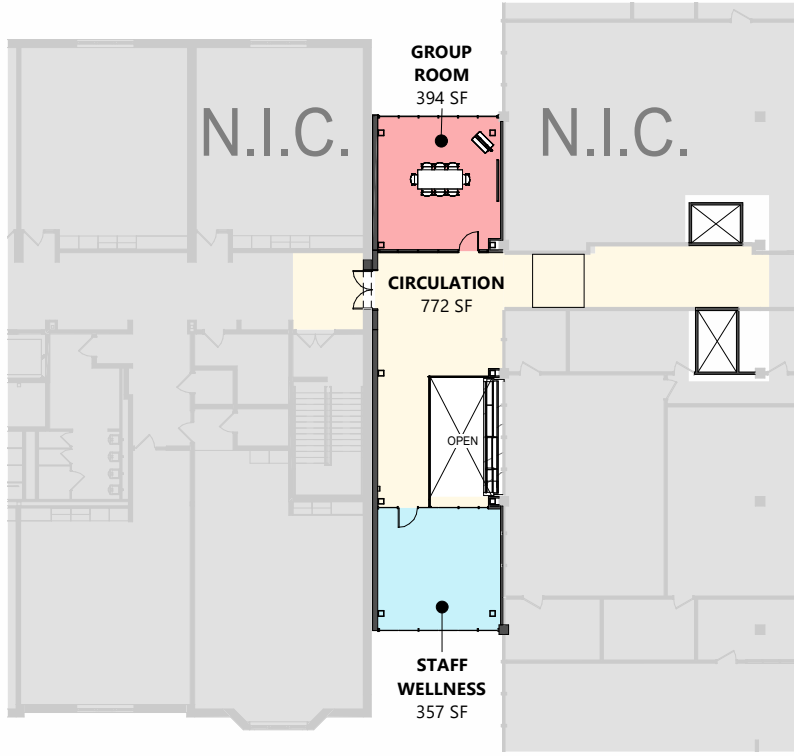




Key Components

- Smith Building Link Addition
- Smith Building Administration Renovations
- T&I Building Link Addition
- T&I Building First Floor Renovations
- *Completion of connecting all buildings on 1st and 2nd floors

BOARD OF EDUCATION
T&I/SMITH BUILDING LEVEL 1



BOARD OF EDUCATION DESIGN INFLUENCES : T&I FIRST FLOOR

Aligned with the shift to comprehensive Career Technical Education, the T&I First Floor prioritizes hands-on, tool-rich learning with clear, safe circulation and durable, high-performance finishes that stand up to intensive use. The layout supports efficient material flow, supervision, and quick transitions between instruction and practice—reinforcing industry-aligned habits and confidence. By integrating display moments, shared support spaces, and technology at the point of need, this level becomes a visible engine of making, connecting students to professional standards while celebrating their progress



PROJECT GOALS

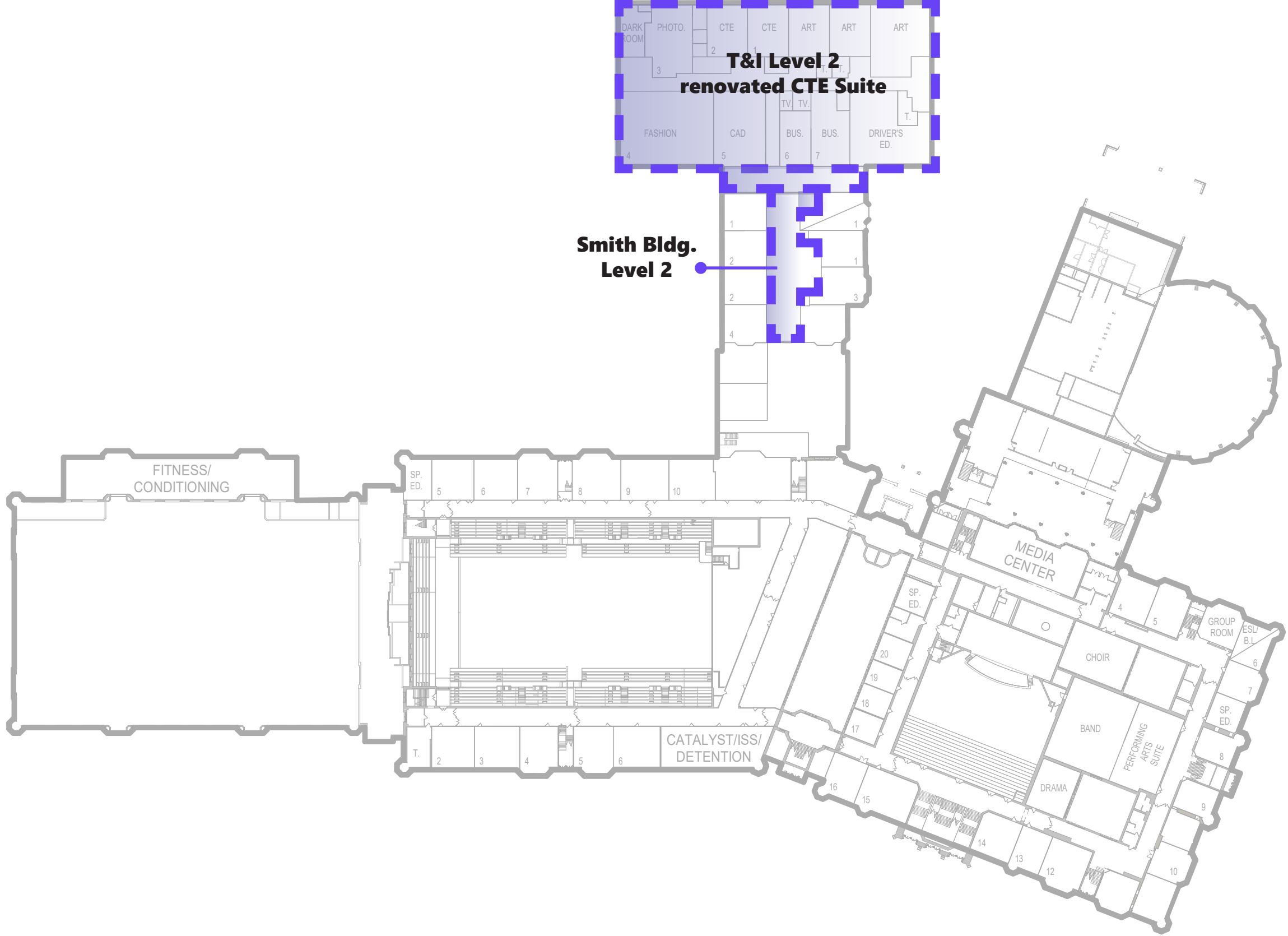
Update Technology & Innovation (T&I) Building Envelope

Modernize the learning environments to align with student interests and career demands

Create a Suite of Spaces to foster collaboration and to promote flexibility and adaptability for a variety of instruction types

Showcase dynamic CTE & Fine Arts programs to simulate real-world experiences and to foster student's interests, passions, and aspirations

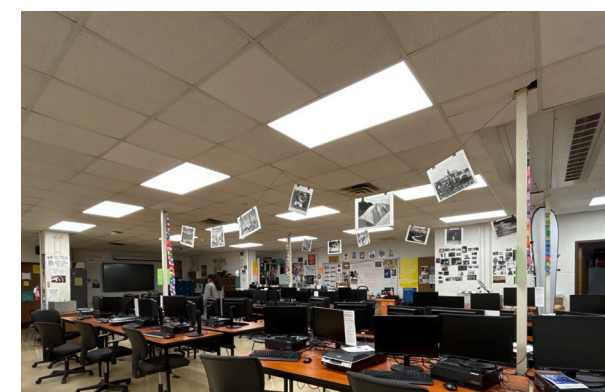
Improve hallway circulation paths of T&I - Second Floor based upon design strategies implemented as part of T&I - First Floor renovations



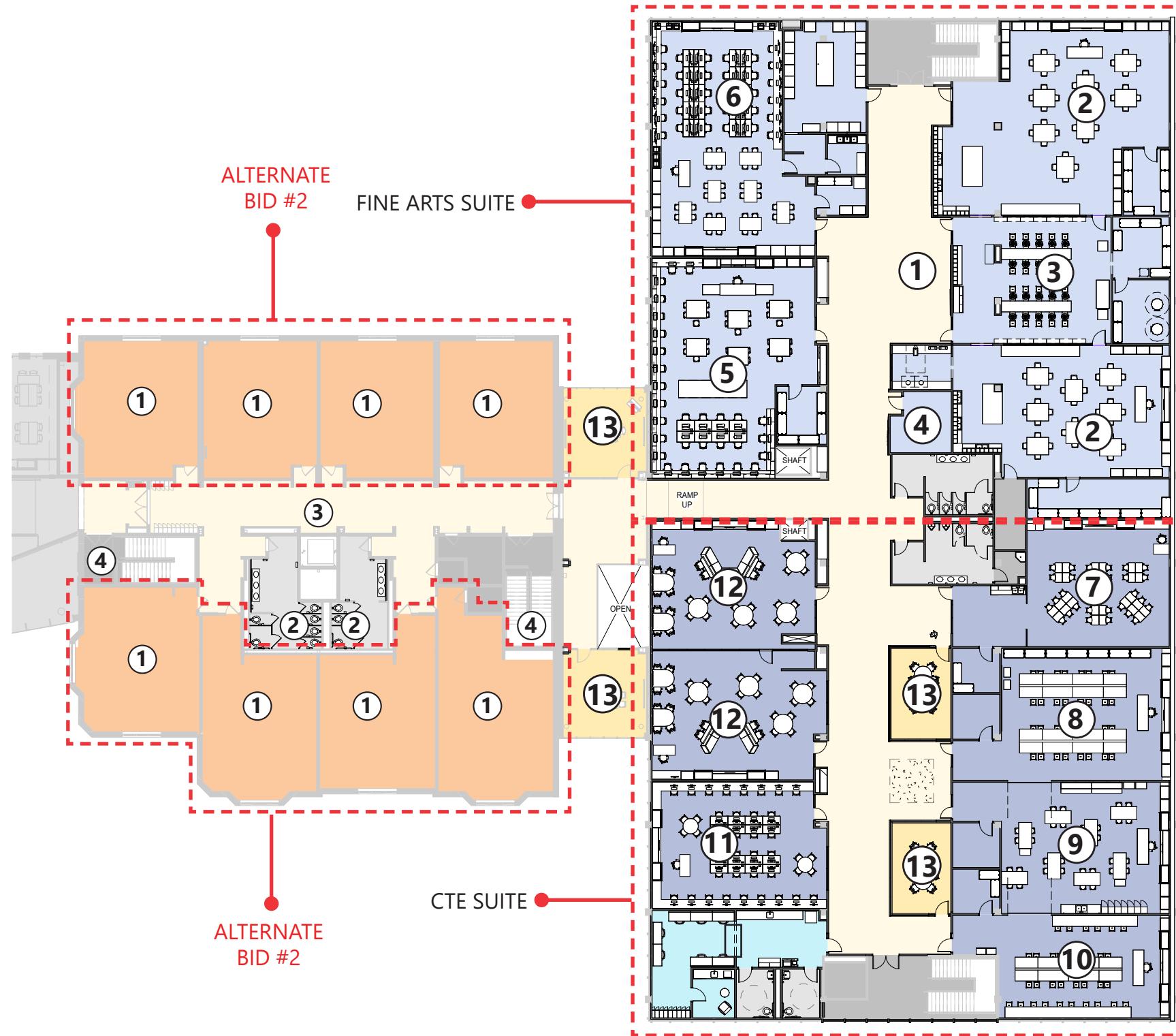
Key Components

- T&I Building Second Floor Renovations
- *Completion of connecting all buildings on 1st and 2nd floors
- Main Building Classroom Renovations
- Smith Building Level 2 Stairs & Bathroom Renovation

BOARD OF EDUCATION T&I/SMITH BUILDING LEVEL 2 - EXISTING

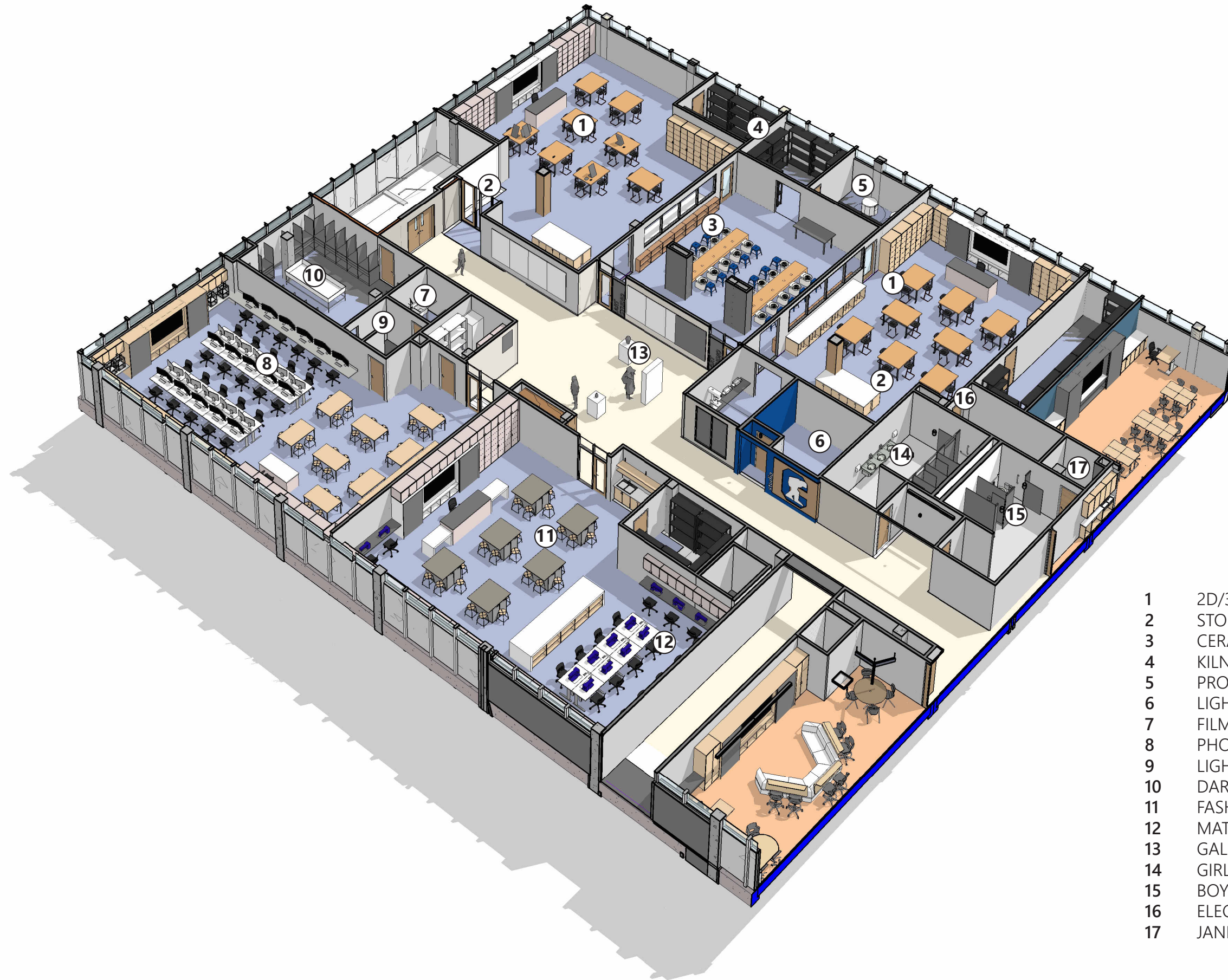


BOARD OF EDUCATION
T&I BLDG. LEVEL 2 - PROPOSED PLAN



- New corridor location to allow for better circulation and alignment with first floor
- Fine Arts suite to have dedicated gallery for pin-up and display space
- Small Group Rooms off main corridor for CTE suite
- Lighting Studio accessed through main corridor for shared use among Fine Arts
- Dedicated Staff Wellness with Mother's Room

- 1 FINE ARTS GALLERY
- 2 ART STUDIO
- 3 CERAMIC/JEWELRY STUDIO
- 4 LIGHTING STUDIO
- 5 FASHION/INTERIOR DESIGN STUDIO
- 6 PHOTOGRAPHY STUDIO
- 7 HEALTH SCIENCES CLASSROOM
- 8 ROBOTICS/ELECTRONICS LAB
- 9 FLEXIBLE CLASSROOM
- 10 COMPUTER MAINTENANCE LAB
- 11 BUSINESS COMPUTER LAB
- 12 BUSINESS CLASSROOM
- 13 SMALL GROUP ROOM



- 1 2D/3D ART STUDIO
- 2 STORAGE
- 3 CERAMIC & JEWELRY
- 4 KILN
- 5 PROJECT STORAGE
- 6 LIGHTING STUDIO
- 7 FILM DARK ROOM
- 8 PHOTOGRAPHY
- 9 LIGHT LOCK
- 10 DARK ROOM
- 11 FASHION & INT. DESIGN
- 12 MATERIAL STORAGE
- 13 GALLERY
- 14 GIRL'S BATHROOM
- 15 BOY'S BATHROOM
- 16 ELECTRICAL CLOSET
- 17 JANITOR'S CLOSET



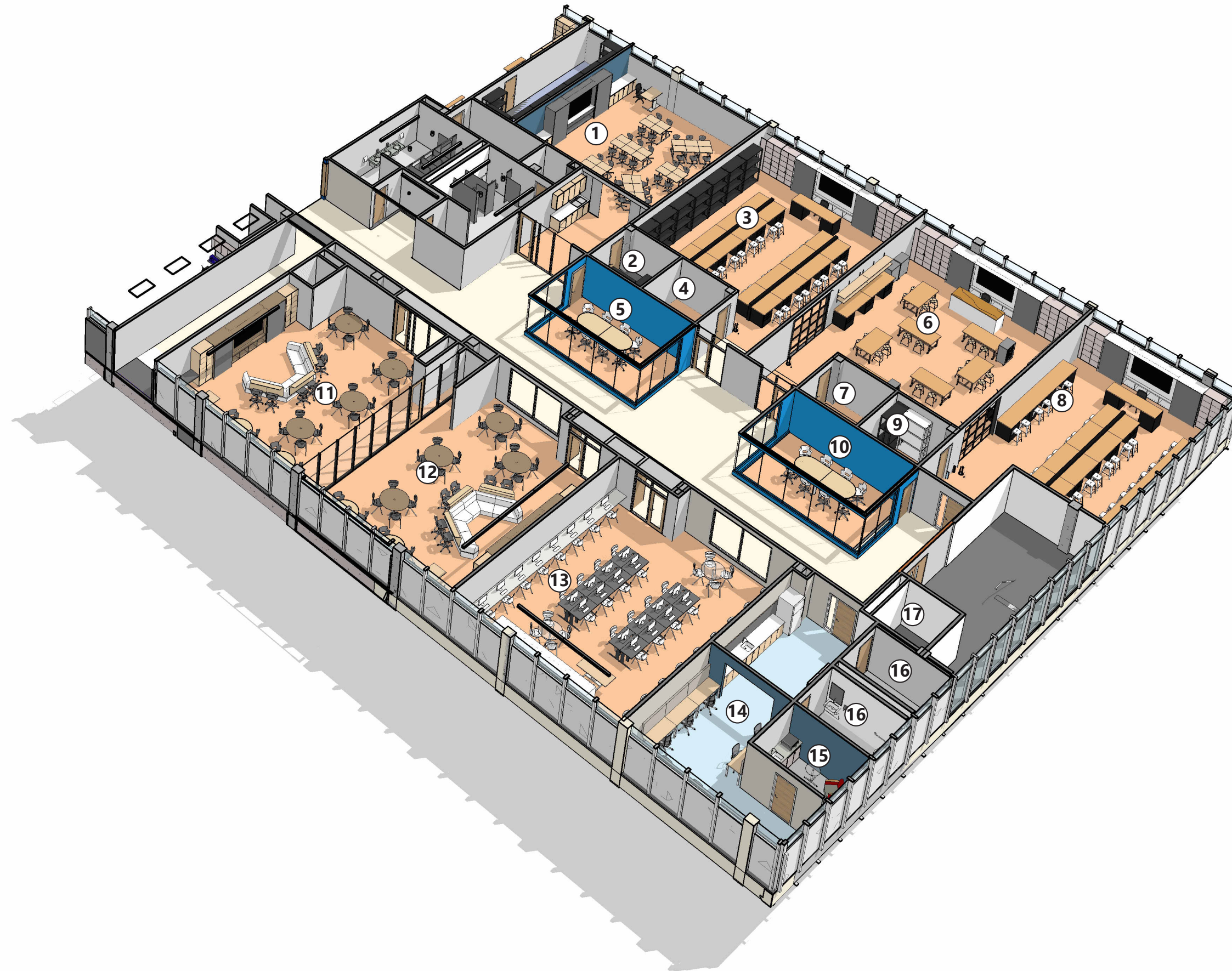












1. HEALTH SCIENCES
2. H.S STORAGE
3. ROBOTICS & ELECTRONICS
4. R.& E. STORAGE
5. SMALL GROUP ROOM
6. FLEXIBLE CLASSROOM
7. F.C. STORAGE
8. COMPUTER MAINTENANCE
9. C.M. STORAGE
10. SMALL GROUP ROOM
11. BUSINESS CLASSROOM
12. BUSINESS CLASSROOM
13. BUSINESS COMPUTER LAB
14. STAFF WELLNESS
15. MOTHER'S ROOM
16. STAFF TOILET
17. EXISTING ELEVATOR





BOARD OF EDUCATION
INTERIOR VIEW - BUSINESS CLASSROOM











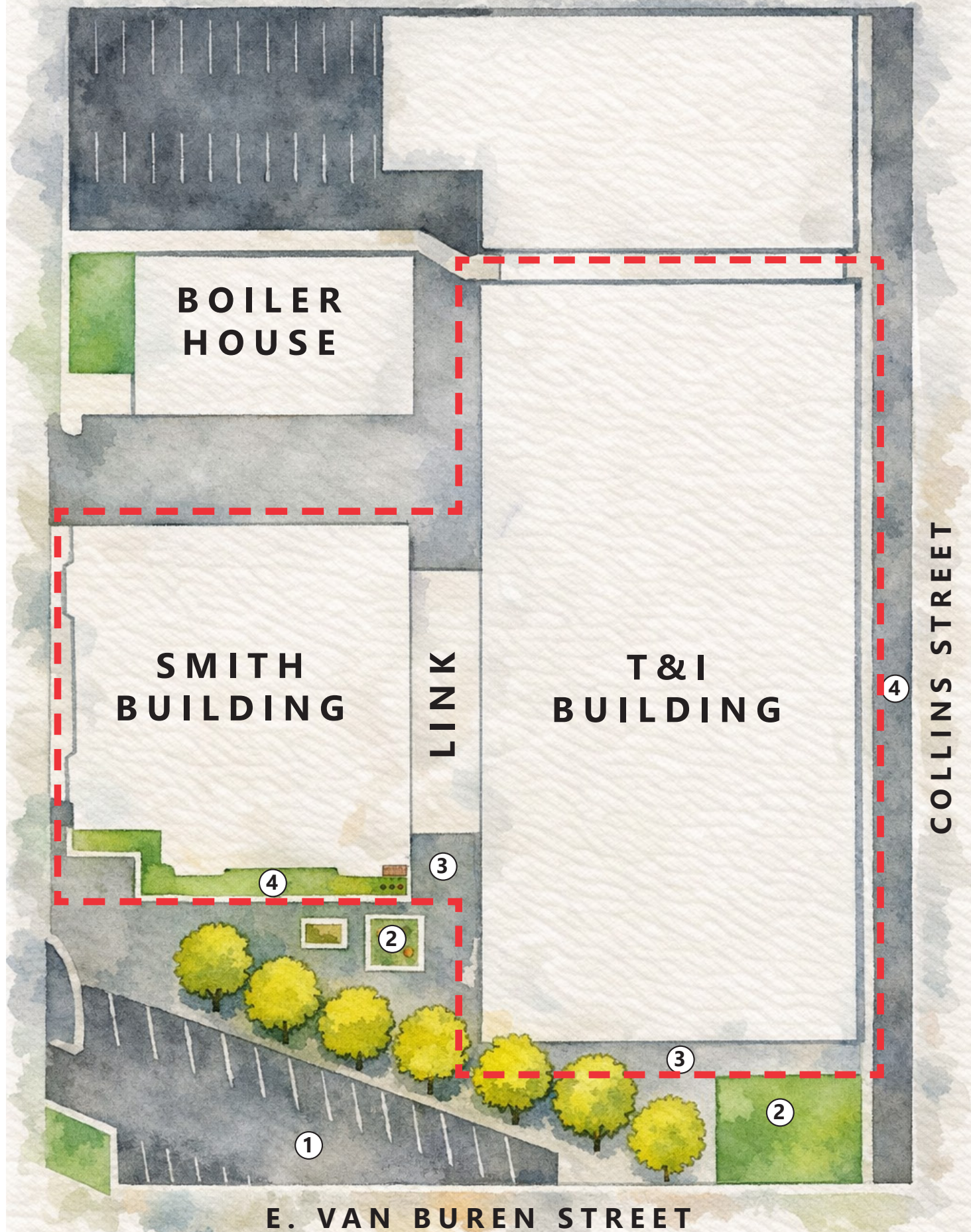






BOARD OF EDUCATION
SITE PLAN

Site work includes repaving of the entire visitor lot that serves both the Smith Building and the T&I Building. The existing tree-lined sidewalk will be maintained & improved. This will connect to the new sidewalk at the entry to the Link and along both fronts of the Main Building and the T&I Building. The sidewalk improvement will also include the stretch along Collins Street. To enhance the new entry location created at the Link during the prior phase of work, new and updated landscaping will be provided.



- 1 VISITOR PARKING LOT
- 2 NEW PLANTINGS & LANDSCAPING
- 3 NEW SIDEWALK/WALKWAY
- 4 REDO SIDEWALK & LANDSCAPING





May 2026 BOE

Phase 3	Base Bid	Alternate Bid	Alternate Bid	Total Base Bid & Alternates
Project Budget Description	T&I Second Floor	Smith Building Classrooms	Stage Floor Replacement	Total Base Bid & Alternates
Central Phase 3 Projects	\$10,998,461	\$1,645,105	\$225,000	\$12,868,566
Subtotal Construction	\$10,998,461	\$1,645,105	\$225,000	\$12,868,566
Escalation	\$562,021	\$84,065	\$11,498	\$657,584
Design Contingency	\$1,156,048	\$172,917	\$23,650	\$1,352,615
Construction Contingency	\$890,157	\$133,146	\$18,210	\$1,041,513
Total Construction	\$13,606,687	\$2,035,233	\$278,358	\$15,920,278
Owners Cost				
CM/GC, Staff, Reimb. Insurance	\$1,632,803	\$197,413	\$33,403	\$1,863,619
Miscellaneous Owners Cost	\$1,670,999	\$497,287	\$0	\$2,168,286
Professional Services Cost	\$1,257,260	\$126,906	\$30,000	\$1,414,166
Owners Cost Total	\$4,561,062	\$821,606	\$63,403	\$5,446,071
Total Cost	\$18,167,749	\$2,856,839	\$341,761	\$21,366,349

Schedule		
Issue for Bid	Board Approval	Construction
October 2026	December 2026	August 2027 - December 2027