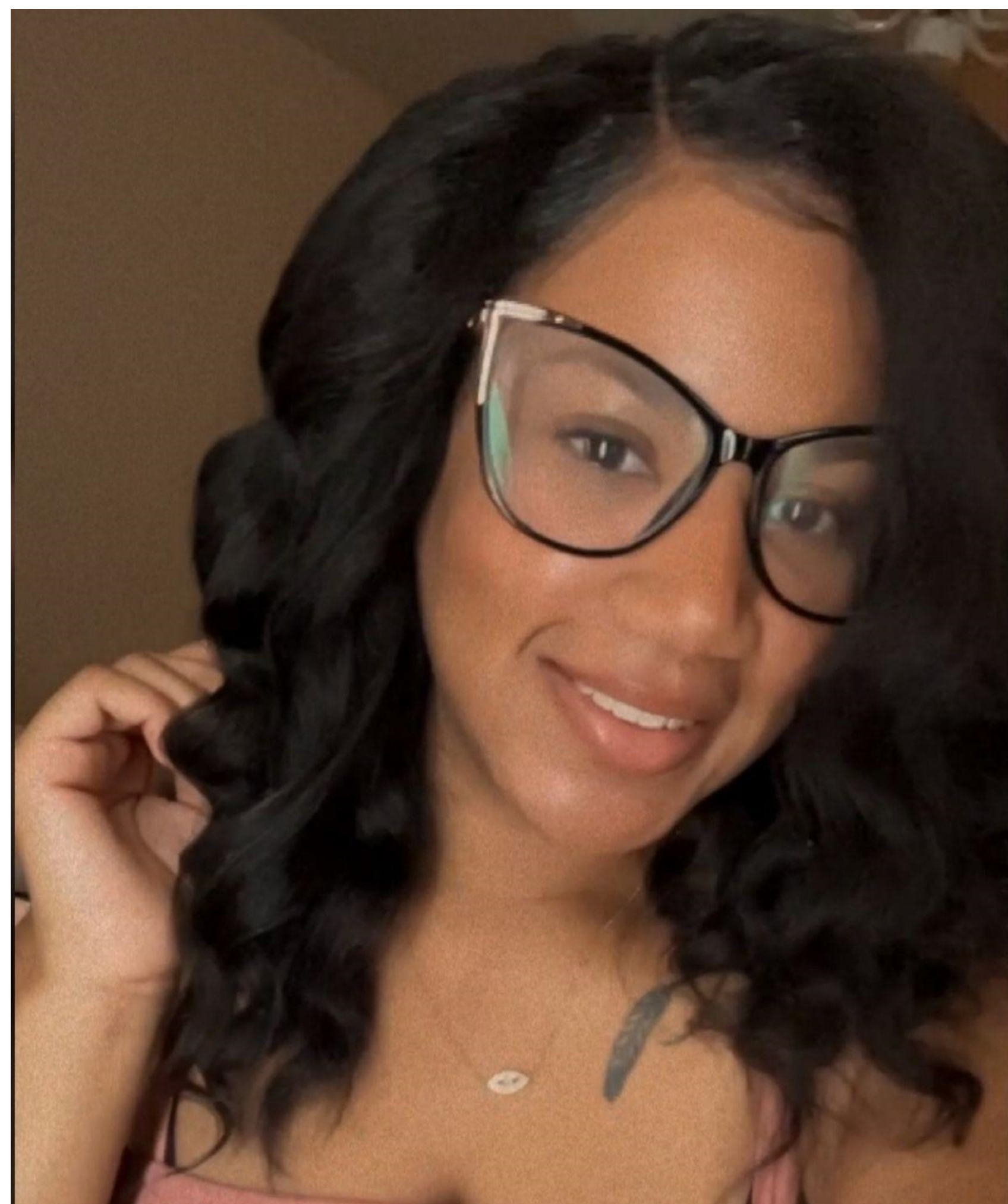




Staff of the Month
October 2023



Child Development Center

Khariyyah Johnson - Preschool 3's and 4's



Blake Manor Elementary

Edith Nava - 1st grade Self-contained

Lily Tjie - Cafeteria Manager



Bluebonnet Trail Elementary

Jose Padilla - K-5 Art

Callista Janosky - IB/Language Arts Coach



Decker Elementary School

Claudia Garcia - 2nd grade Self-contained

Renisha McKinley - Instructional Aide



Lagos Elementary School

Rachel Alvarado - 3rd grade ESL Math & Science

Marisol Gonzales - Registrar



Manor Elementary Early Learning Center

Melody Ito - Pre-K/4 yr olds

Alejandra Fuentes - Registrar



Oak Meadows Elementary School

Sarah Dickerson - ESL Kindergarten

Anabel Rodriguez - FAC Educational Assistant



Pioneer Crossing Elementary

Danyelle Hampton - Kindergarten

LaDaisha Collins - Behavioral Tech



Presidential Meadows Elementary School

Justi Trauernicht - K-5th grades Language & Culture

Liced Perales - Regular Educational Aide



ShadowGlen Elementary School

Angie Flowers - 4th grade Math & Science

Felecia Fonseca - Special Education EA



Manor Rise Academy

Maria Jaramillo - 1st-2nd grade Bilingual

Julissa Clark - Bilingual Instructional Coach



Decker Middle School

Gregorio Boco - 7th grade Math

Carolina Flores - Attendance Clerk



Manor Middle School

Stacy Bartos - 7-8th grades CTE

Brettne Lindgren - Assistant Principal



Manor New Tech Middle School

Fabian Cazares - 8th grade Algebra 1 & Math Dept. Chair
Judith Morgan - Clerical Support Educational Specialist



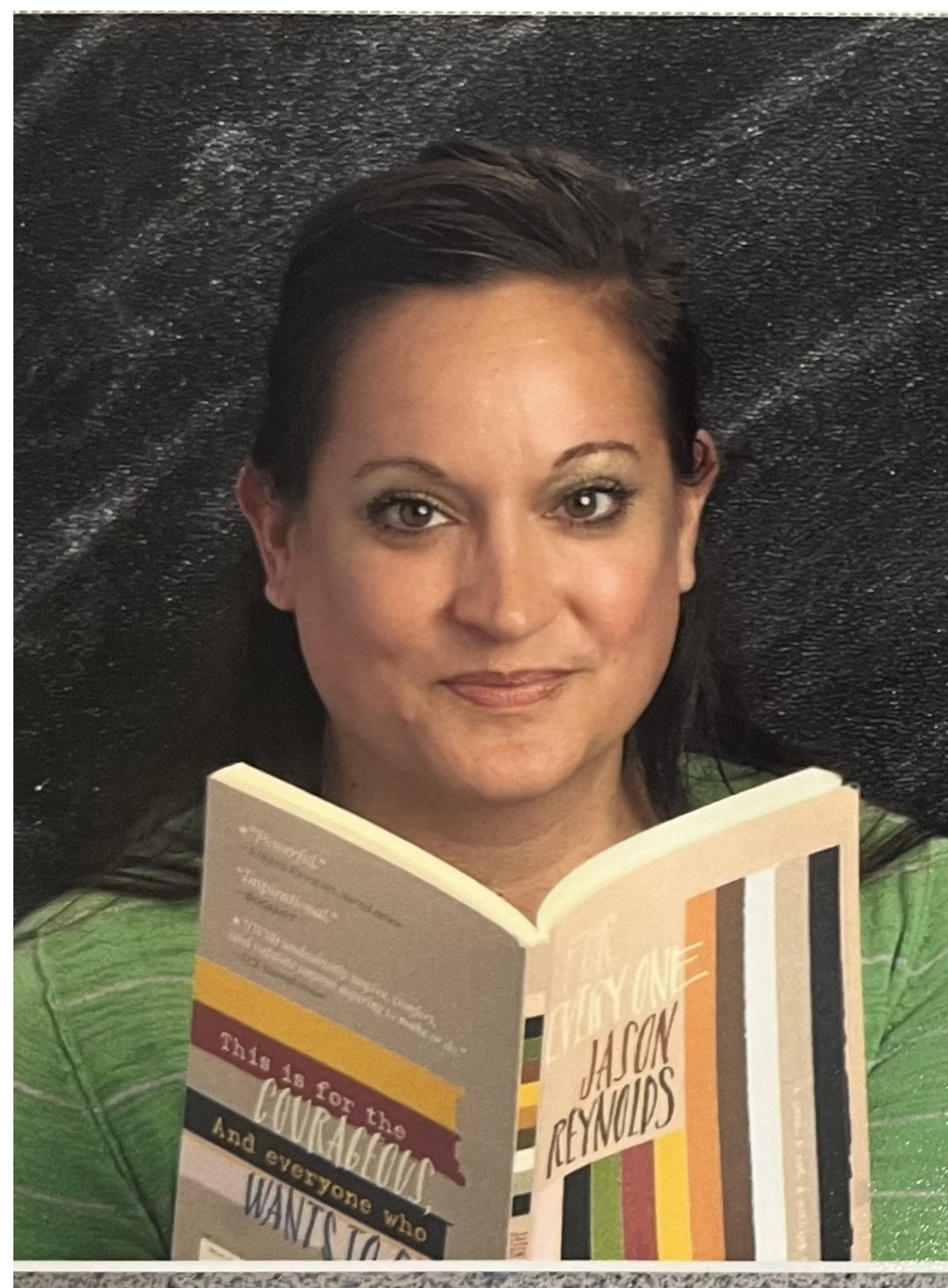
Manor Early College High School
Gabrielle Sewing - 11-12th grades Social Studies
Stephanie Lippke - Registrar



Manor Excel Academy/MAP

Djeanne Cocjin - 9-12th grades Science

Karina Lopez - Secondary Educational Assistant



Manor New Tech High School

Juliet Goodfellow - 11-12th grades Math

Megan Hedgecock - 9-10th grades English I&II & Athletics

Jose Navarro Hernandez - Lead Custodian



Manor Senior High School

Merlyn Villarosa - 11-12th grades Math

Karen Brown - Admin. Assistant to Assist. Principals