

April 2016

Derby Public Schools

Performance Dashboard

Derby High School

Martin Pascale, Principal

“People without information cannot act. People with information cannot help but act.”

Ken Blanchard



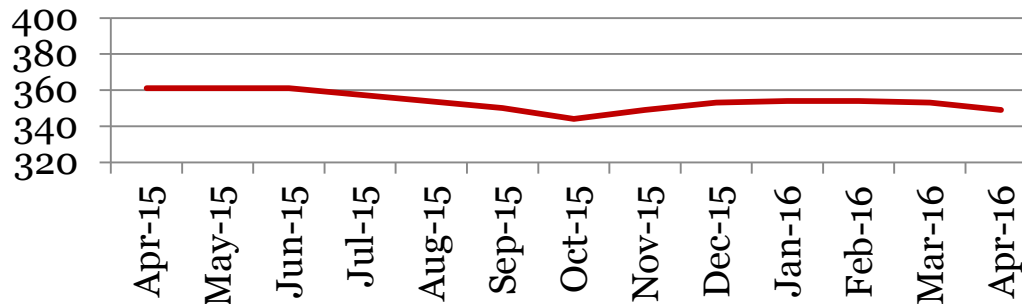
Monthly Data

Derby High School

Enrollment – 1st of the month

	9	10	11	12	Total
Apr-16	100	80	91	78	349
Mar-16	102	81	90	80	353
Feb-16	103	81	90	80	354
Jan-16	103	79	90	82	355
Dec-15	105	83	83	82	353
Nov-15	103	83	82	81	349
Oct-15	101	82	80	81	344
Sep-15	105	83	81	81	350
Jun-15	101	91	82	87	361
May-15	101	91	82	87	361
Apr-15	101	91	82	87	361

Total School Enrollment

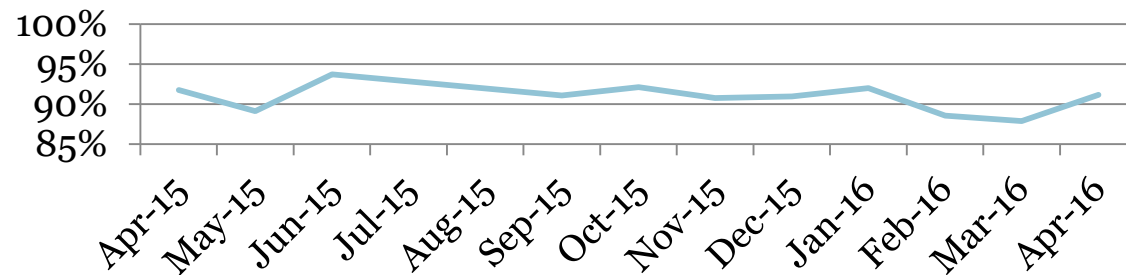


Attendance – Students

Average daily percent present:

	9	10	11	12	Total
Apr-16	90	94	92	89	91
Mar-16	86	91	87	88	88
Feb-16	86	91	89	89	89
Jan-16	88	95	94	92	92
Dec-15	90	91	93	90	91
Nov-15	88	91	94	91	91
Oct-15	89	91	95	95	92
Sep-15	87	91	93	95	91
Jun-15	90	94	95	94	94
May-15	88	92	90	86	89
Apr-15	90	93	91	93	92

Total Student Attendance

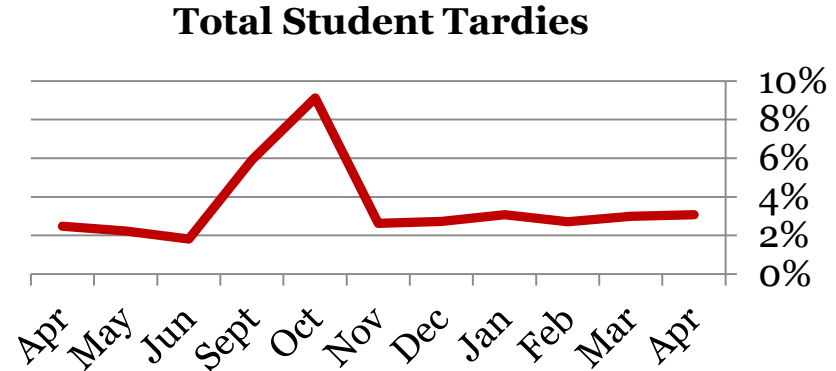


Tardies

Average daily percent tardy:

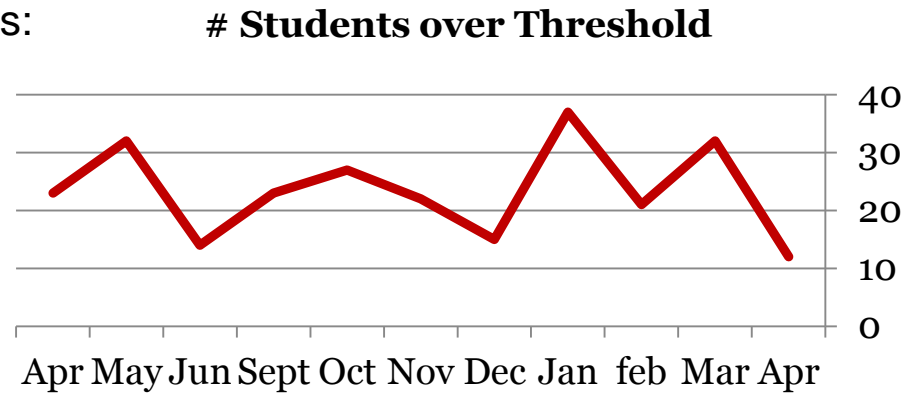
Derby High School

	9	10	11	12	Total
Apr-16	3	2	3	4	3
Mar-16	3	3	3	3	3
Feb-16	3	2	2	3	3
Jan-16	3	3	5	2	3
Dec -15	3	3	2	3	3
Nov -15	3	2	2	3	3
Oct-15	10	8	9	9	9
Sept-15	6	5	7	6	6
Jun-15	2	2	1	2	2



Number of students tardy 5 or more days:

	9	10	11	12	Total
Apr-16	5	2	3	2	12
Mar-16	11	7	6	8	32
Feb-16	7	3	5	6	21
Jan-16	6	2	27	2	37
Dec-15	8	3	1	3	15
Nov-15	8	2	4	8	22
Oct-15	9	6	7	5	27
Sept-15	8	6	4	5	23
Jun-15	3	4	5	2	14

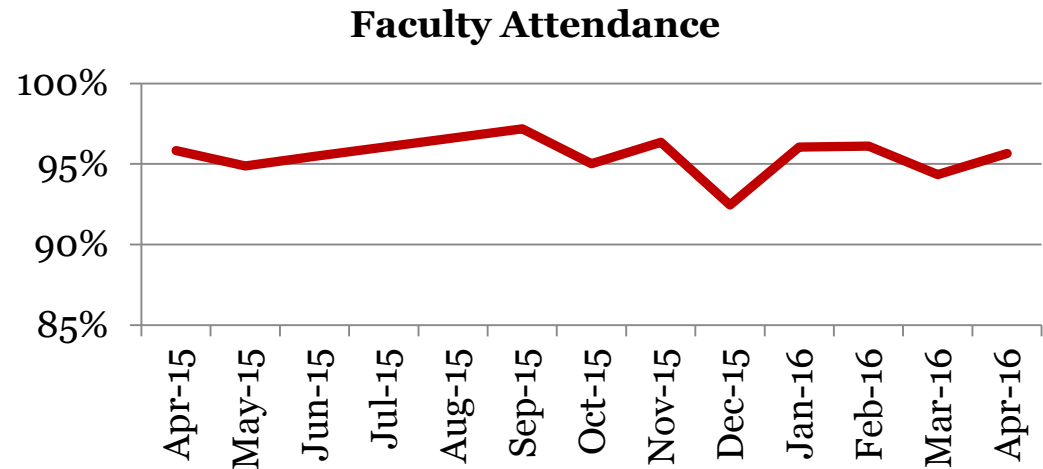


Attendance – Faculty

Average daily percent present:

Derby High School

	Total
Apr-16	96
Mar-16	94
Feb-16	96
Jan-16	96
Dec-15	92
Nov-15	96
Oct-15	95
Sep-15	97
Jun-15	95
May-15	95
Apr-15	96



**This indicator reflects certified staff and does not include absences created by class trips, professional development, workman's comp and FMLA. However % may be reduced due to long term illness beyond FMLA.*

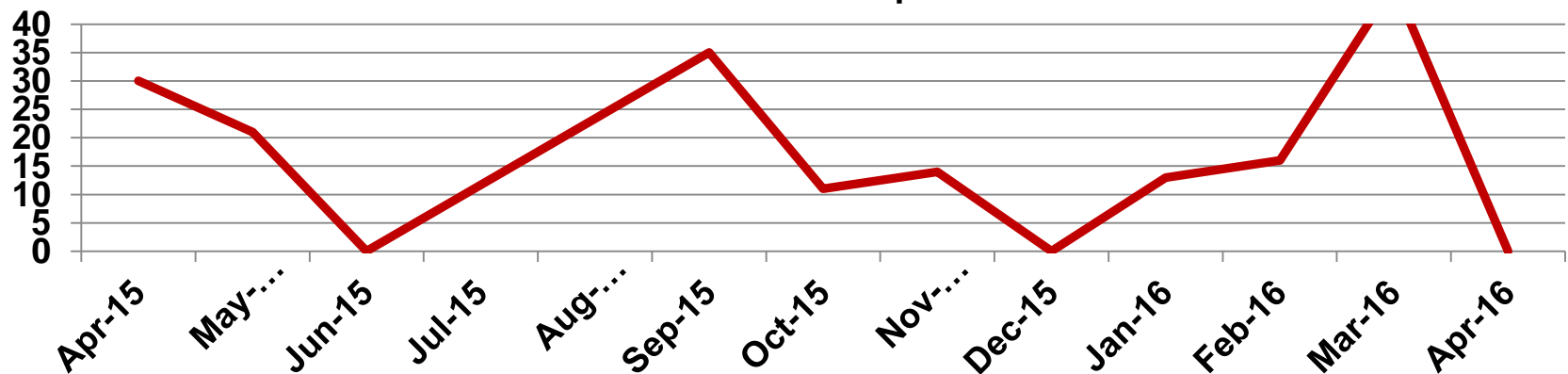
Suspensions – Out of School

Derby High School

Number of student suspensions (total days of suspension):

	9		10		11		12		Total	
Apr-16	0	(0)	0	(0)	0	(0)	0	(0)	0	(0)
Mar-16	3	(22)	1	(10)	1	(3)	2	(12)	7	(47)
Feb-16	1	(2)	0	(0)	2	(12)	1	(2)	4	(16)
Jan-16	2	(11)	0	(0)	0	(0)	2	(2)	4	(13)
Dec-15	0	0	0	(0)	0	(0)	0	(0)	0	(0)
Nov-15	1	(10)	0	(0)	2	(4)	0	(0)	3	(11)
Oct-15	3	(9)	10	(2)	0	(0)	0	(0)	13	(11)
Sep-15	1	(10)	1	(5)	2	(20)	0	(0)	4	(35)
Jun-15	0	(0)	0	(0)	0	(0)	0	(0)	0	(0)
May-15	1	(3)	4	(17)	1	(1)	0	(0)	6	(21)
Apr-15	1	(5)	0	(0)	1	(2)	3	(23)	5	(30)

Total Out of School Suspensions

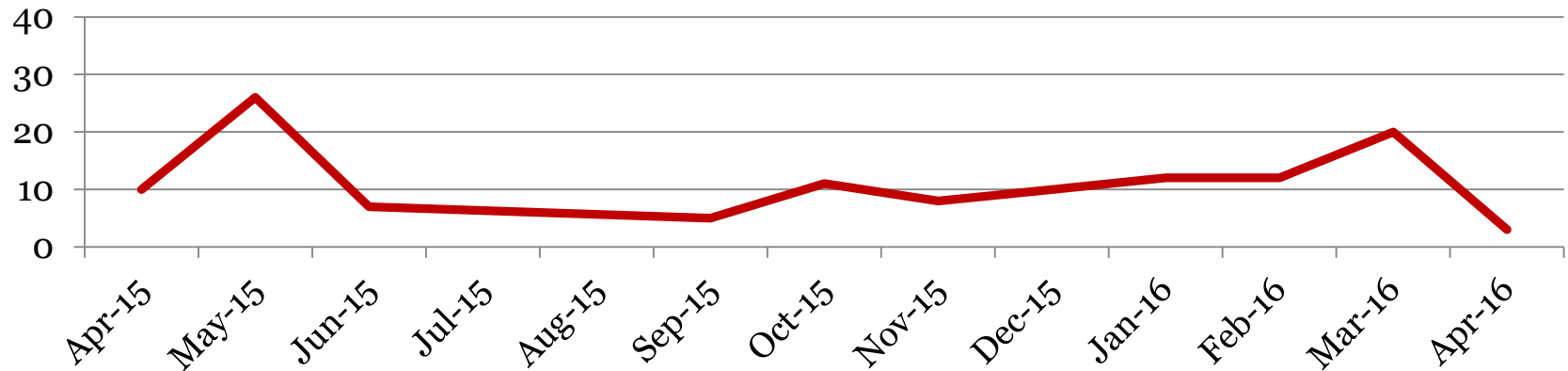


Suspensions – In School

Number of student suspensions (total days of suspension):

	9		10		11		12		Total	
Apr-16	0	(0)	1	(1)	0	(0)	1	(2)	2	(3)
Mar-16	2	(2)	2	(3)	2	(2)	7	(13)	13	(20)
Feb-16	4	(6)	3	(4)	0	(0)	2	(2)	9	(12)
Jan-16	8	(9)	0	(0)	2	(3)	0	(0)	10	(12)
Dec-15	5	(7)	0	(0)	2	(3)	0	(0)	7	(10)
Nov-15	4	(4)	0	(0)	1	(1)	2	(3)	7	(8)
Oct-15	7	(8)	1	(1)	2	(2)	0	(0)	10	(11)
Sep-15	1	(1)	1	(2)	1	(1)	1	(1)	4	(5)
Jun-15	3	(3)	2	(2)	2	(2)	0	(0)	7	(7)

Total In School Suspensions



Newly Enrolled Students

	9	10	11	12	Total
Apr-16	0	1	0	0	1
Mar-16	0	0	1	0	1
Feb-16	0	1	1	0	2
Jan-16	1	2	0	0	3
Dec-15	3	1	1	0	5
Nov-15	3	1	2	1	7
Oct-15	3	1	3	0	7
Sep-15	5	2	1	3	11
Summer-15	1	0	0	0	1
Jun-15	1	0	0	0	1
May-15	0	0	0	0	0
Apr-15	1	0	0	0	1

Departing Students

Students who have left the school during the month for any reason:

	9	10	11	12	Total
Apr-16	1	0	0	0	1
Mar-16	2	1	0	1	4
Feb-16	1	1	1	0	3
Jan-16	1	0	1	2	4
Dec-15	0	1	0	1	2
Nov-15	1	2	0	0	3
Oct-15	0	0	2	1	3
Sep-15	6	10	1	1	18
Summer-15	1	1	0	0	2
Jun-15	2	0	0	0	2
May-15	1	0	0	0	1
Apr-15	0	0	0	0	0