



# NEW AG FARM FACILITY

BOARD MEETING PRESENTATION  
ECTOR COUNTY ISD  
2024.11.19



# MEETING AGENDA

SCOPE TO BUDGET

SITE & LOCATION

FLOOR PLAN CONCEPT

SAMPLE PROJECT IMAGES

EXTERIOR VIEW CONCEPTS

SCHEDULE

# SCOPE TO BUDGET

PRELIMINARY COST ESTIMATE

MUST HAVE

WANT TO HAVE (FUTURE EXPANSION)

- CLASSROOM
- HORTICULTURE
- AGRICULTURE
- ADMIN / FACULTY
- ARENA
- RESTROOM / JAN / STOR
- UTILITY
- SITE

- FUTURE PRACTICE ARENA
- FUTURE SHOW ROOM & EXERCISE AREA
- FUTURE FARROWING HOUSE
- FUTURE EWE BARN
- FUTURE MARKET & TOOL SHOP
- FUTURE EXERCISE ROOM
- FUTURE TEACHERS LOUNGE



TOTAL HARD COST ESTIMATE	\$5.5 - \$5.8 M
BUDGET	\$5.63 M
DELTA	(+/- \$200,000)

+ "MUST HAVE" ITEMS	\$3.8 M
TOTAL HARD COST ESTIMATE	\$9 - \$9.6 M
BUDGET	\$5.63 M
DELTA	(+/- \$4.0 M)

# SITE & LOCATION

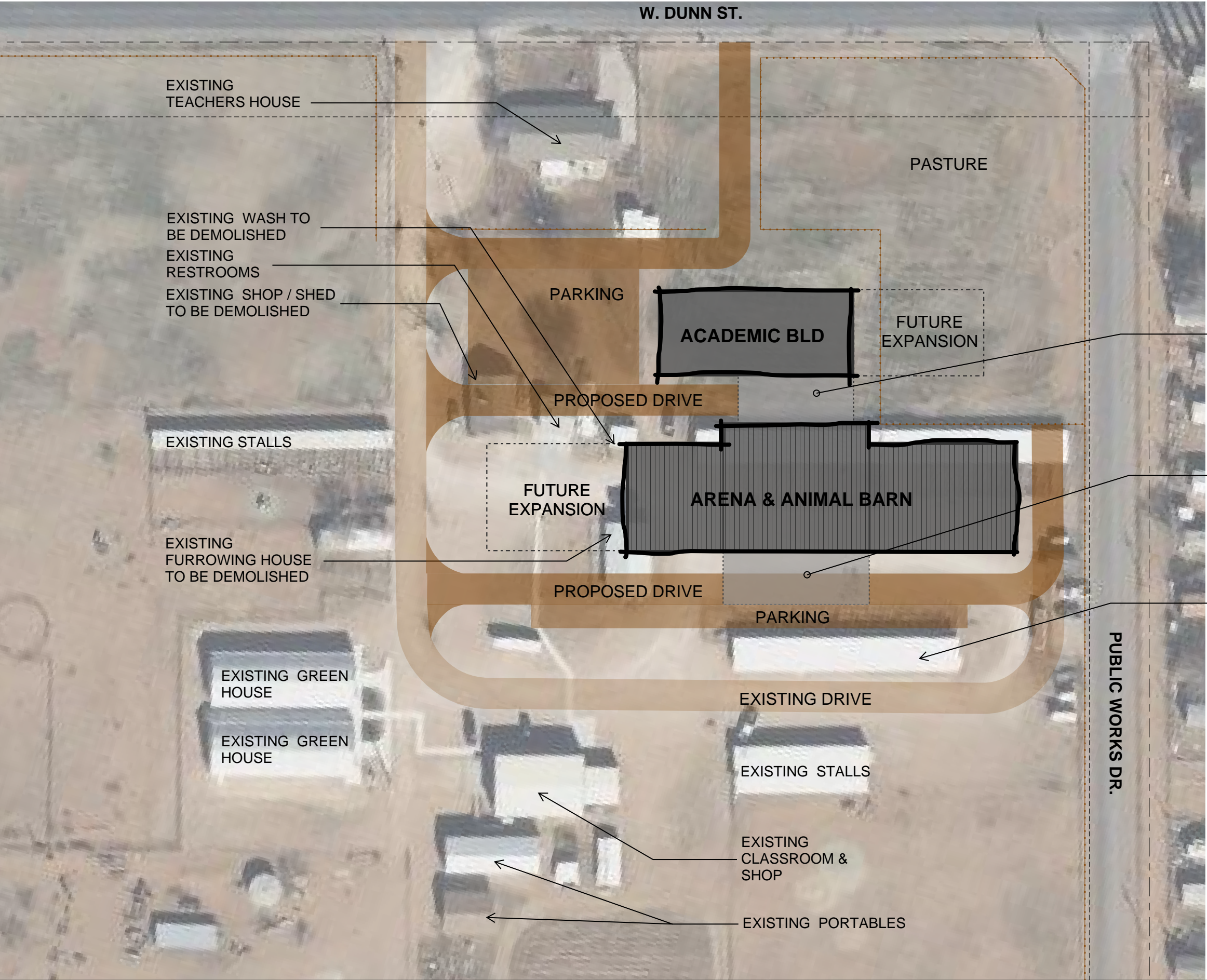
## PROPOSED FACILITY LOCATION











PROPOSED BREEZWAY

PROPOSED TRUCK /  
TRAILER DROP OFF

GENERAL NOTES

ALL SF SHOWN ON PLAN ARE  
CONCEPTUAL

PROPOSED DRIVES ARE TO BE GRAVEL

DRIVE LOOP & BUILDING ACCESS  
PENDING AHJ & FIRE MARSHALL REVIEW  
& APPROVAL

SITE SECURITY & ACCESS REVIEW  
PENDING FURTHER DEVELOPMENT



# FLOOR PLAN CONCEPT

BUILDING LAYOUT PLAN



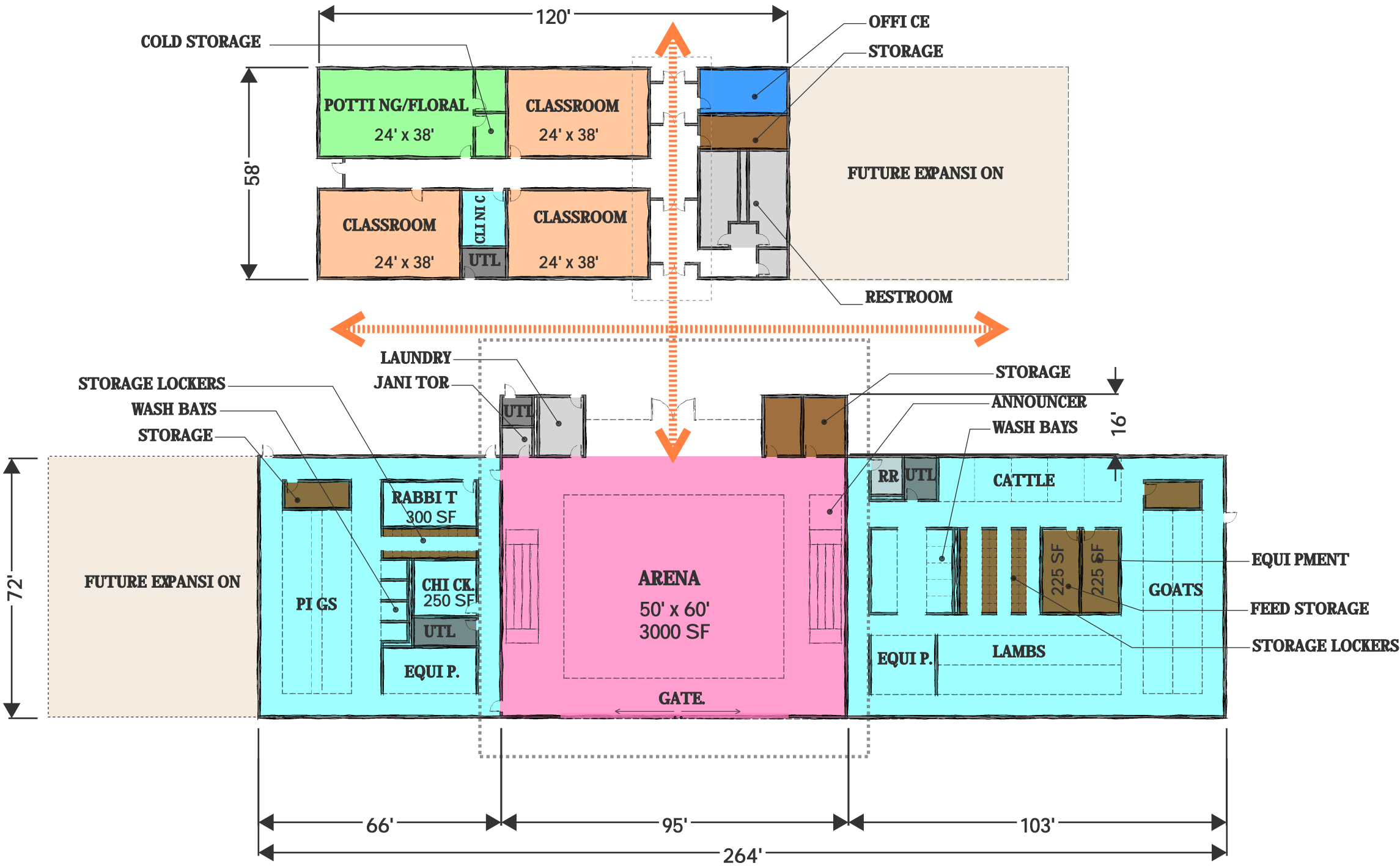
SPACE LEGEND

- CLASSROOM
- PEDESTRIAN CIRCULATION
- HORTICULTURE
- AGRICULTURE
- ADMIN / FACULTY
- ARENA
- RESTROOM / JAN / STOR
- UTILITY
- FUTURE EXPANSION

\*ALL SF SHOWN ON PLAN ARE CONCEPTUAL

PROGRAM QUANTITIES

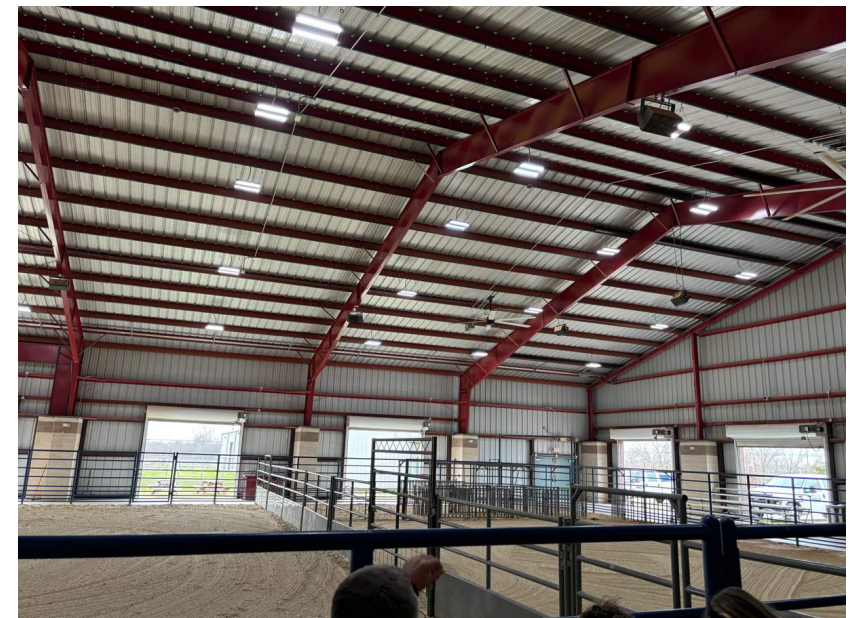
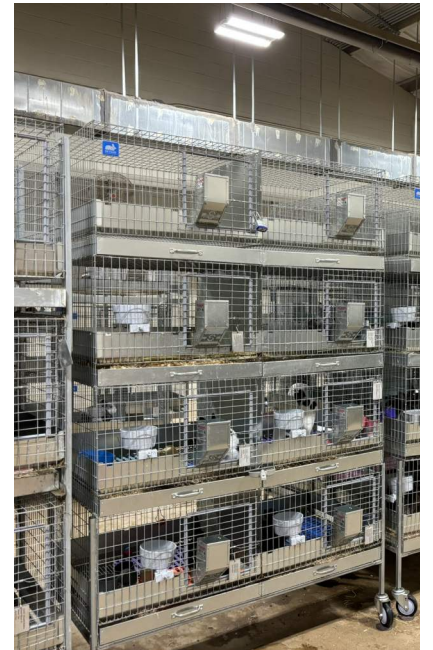
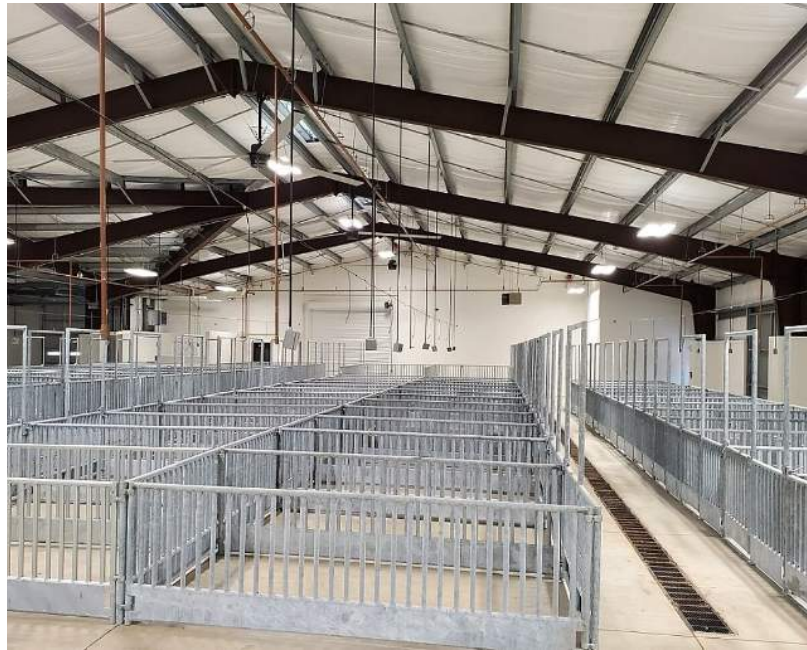
LIVESTOCK	
PIGS	20 5'X8' PENS
LAMBS	20 5'X8' PENS
GOATS	20 5'X8' PENS
CATTLE	5 10'X12' PENS
RABBITS	300 SF ROOM
CHICKENS	250 SF ROOM
WASH BAYS	
PIGS	4 5'X7' GATED BAYS
CATTLE, LAMBS, GOATS	1 7'X22' OPEN BAY WITH TIE OFFS
STORAGE	
PIGS	20 2'X2 1/2' CAGES
CATTLE, LAMBS, GOATS	45 2'X2 1/2' CAGES
CATTLE	225 SF FEED STORAGE ROOM
CATTLE	225 SF EQUIPMENT STORAGE ROOM
BARN	2 125 SF GENERAL STORAGE ROOMS
ARENA	2 150 SF GENERAL STORAGE ROOMS
CLASSROOMS	
MULTI-USE CLASSROOMS	3 900 SF ROOMS
HORTICULTURE	1 900 SF ROOM



# SAMPLE PROJECTS

REFERENCE IMAGES

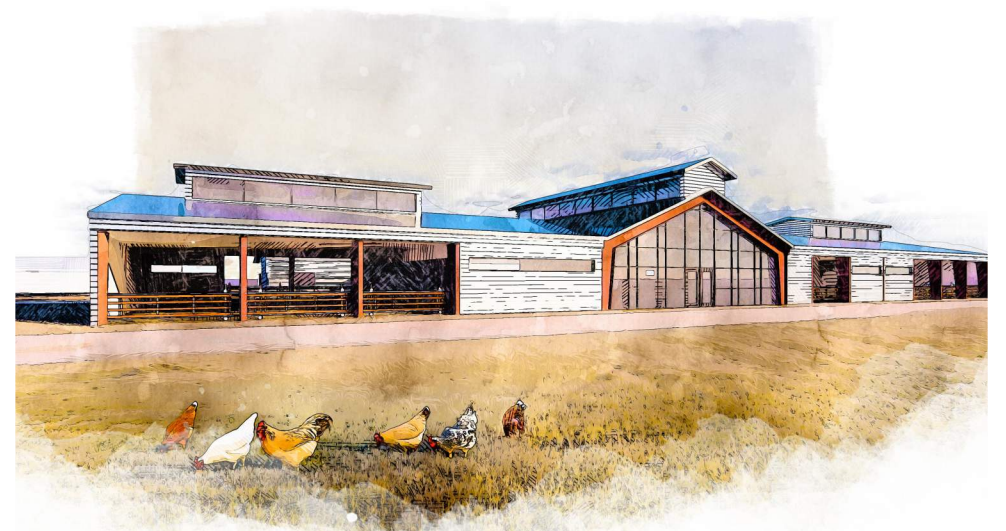






# EXTERIOR VIEW CONCEPTS

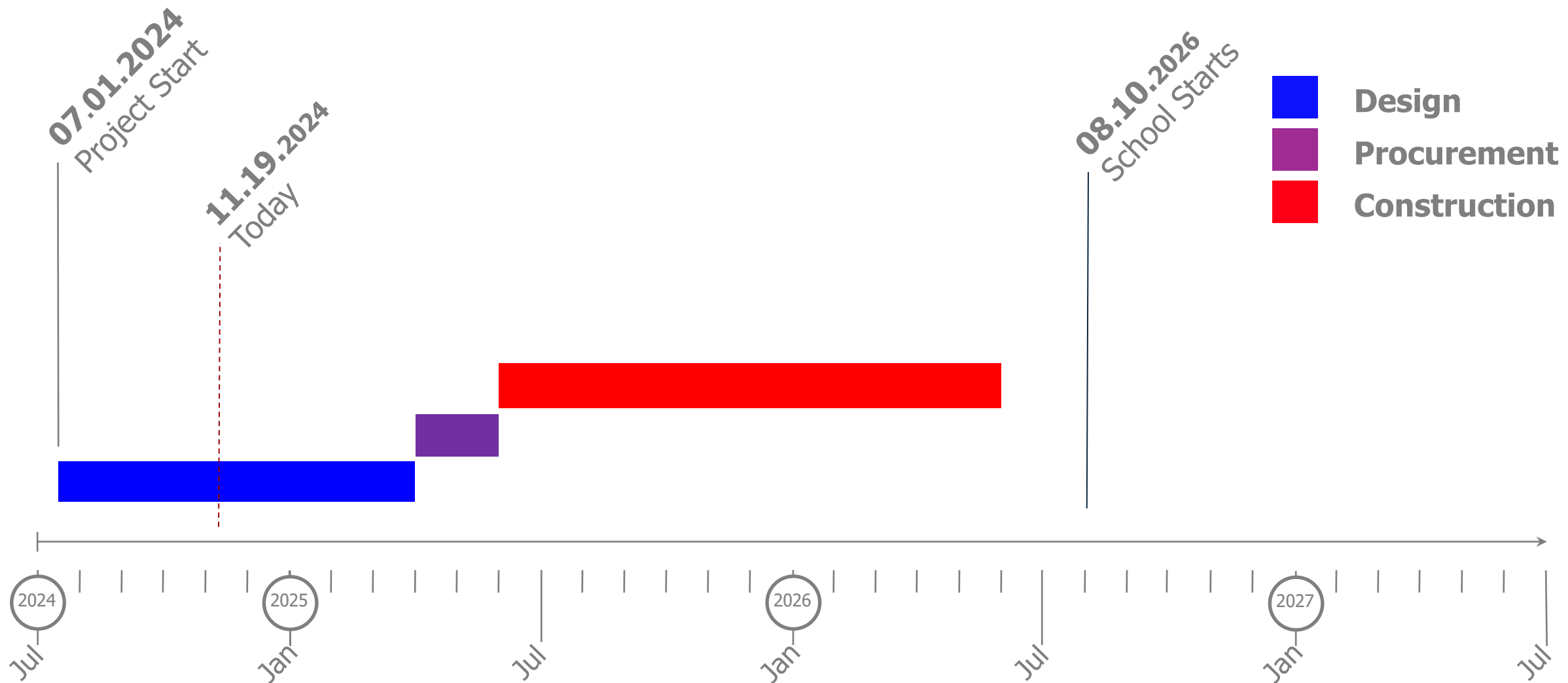
DESIGN IMAGES



# SCHEDULE

DESIGN & CONSTRUCTION





**Parkhill**

