



ADVANCING WELLNESS AND
RESILIENCY IN EDUCATION

Mental Health
First Aid



Growth Understanding Interaction Decisions Empathy

ADE Office of Information Technology: Jan. 2021



ADE K-12 Division of Elementary & Secondary Education
Website Update!

[Read More](#)

[Website](#)



LEA Insights | Version 2021.1.0 released!

[Visit Website](#)

[Digital Learning and AMI Application](#)

[LEA Assignment](#)

[Human Capital Planning Tool](#)

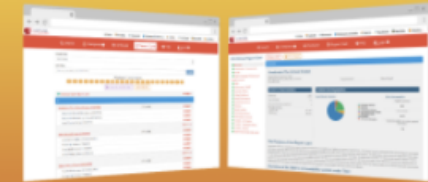


ADE Launches Statewide Community Resources Portal

The Arkansas Department of Education is pleased to launch the Statewide Community Resources Portal, a website that connects schools and communities with much-needed information about available support services around the state

[Visit Website](#)

 MY SCHOOL INFO
SEARCH • COMPARE • INFORM



Release of Report Cards 3.0 on My School Info Portal

[Arkansas School Report Card](#)

[User Guide](#)

Privacy AwARe Week

Monday, January 25

"It's Happening!" Tabletop Simulation

Tuesday, January 26

Privacy AwARe Training Module

Wednesday, January 27

Data Privacy: The Educator's Perspective

Thursday, January 28 - Data Privacy Day

Data Privacy: The Student's Perspective

Friday, January 29

Privacy AwARe: What's Next?



DIVISION OF ELEMENTARY
& SECONDARY EDUCATION



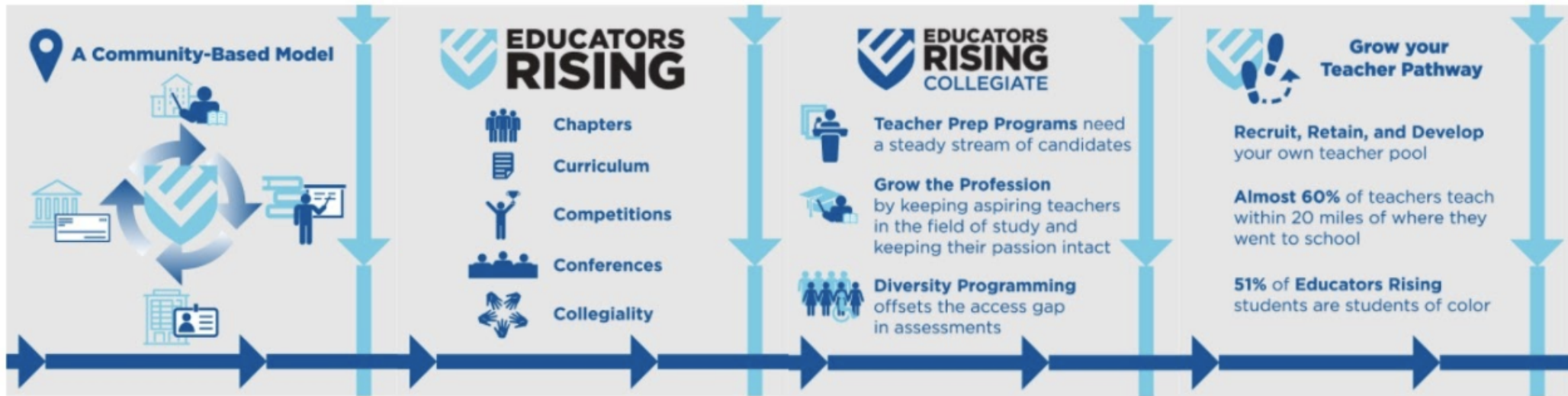
PrivacyAware



EDUCATORS RISING

ARKANSAS

Pathway



#LoveTeaching Week 2021

#LoveTeaching Week is a grassroots campaign started by teachers in 2015 as an opportunity to celebrate teaching, leading, and learning in a way that unites and invigorates educators and those they inspire all around the world.

Every year, Valentine's Day marks the beginning of a week-long conversation that aims to illuminate why teachers enter and remain in the field of education. The Twitter campaign outlined in the box to the right is one opportunity to join teachers around the country in promoting the profession. Be sure to use #LoveTeaching when you post!



Celebrate with 2020 ATOY Joel Lookadoo

Twitter Campaign

February 14: Support Sunday

Share a must have tech tool that you #LoveTeaching with.

February 15: Motivational Monday

Name a song that would definitely be part of your #LoveTeaching playlist.

February 16: Thankful Tuesday

Send a shoutout to a colleague whom you #LoveTeaching beside.

February 17: Wednesday Wisdom

Share a quote from an educator champion that inspires you to #LoveTeaching.

February 18: Teach Me Thursday

Explain a lesson learned from students that helped you #LoveTeaching even more.

February 19: Friday Friday

Describe something that happened this past week that made you smile and rekindle how much you #LoveTeaching.

February 20: Self-Care Saturday

What are ways you re-charge over the weekend so that you're ready to #LoveTeaching when the week starts up again?

February 21: Sum-It-Up Sunday

Leave a meme that illustrates how you felt about participating in #LoveTeaching week!

Use #LoveTeaching when you post.

SEAMLESS WORK-BASED LEARNING PLATFORM PILOT

- ▶ 16 Work-Based Learning Coordinators across the state started to pilot the new system for managing WBL projects and collecting data in January and attended demo presentations.



Organization	Primary Contact	Email Address	Status

SUN	MON	TUE	WED	THU	FRI	SAT
27	28	29	30	31	1	2
3	4	5	6	7	8	9
10	11	12	13	14	15	16
17	18	19	20	21	22	23