

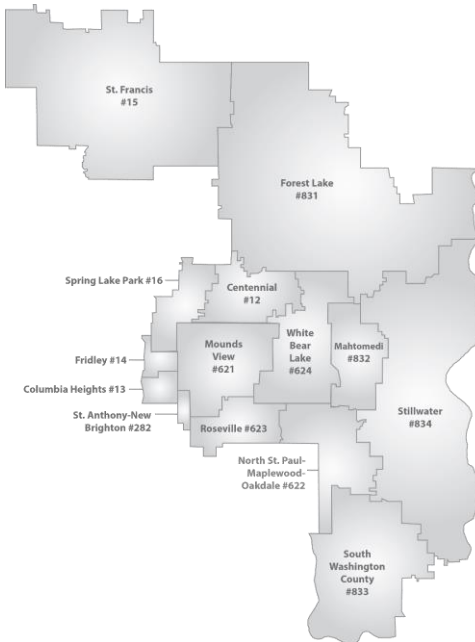


**NORTHEAST METRO** | **916**  
Intermediate School District  
*partners in education*

## MAHTOMEDI SCHOOL BOARD

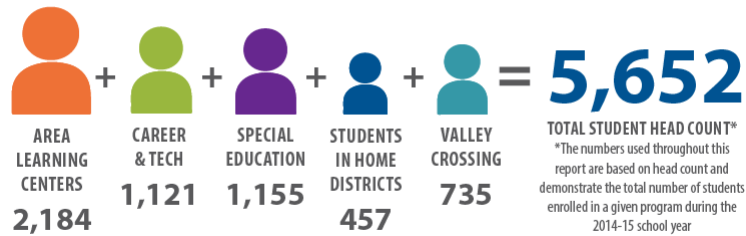
April 28, 2016

### 14 MEMBER DISTRICTS



## BY THE NUMBERS

### STUDENTS



### STAFF



Northeast Metro 916 employs a high staff to student ratio in some programs, with a large number of teachers and education assistants, as well as other licensed positions such as social workers, licensed school nurses, and more.

## MAHTOMEDI SPECIAL ED ENROLLMENT

Program	5-year Total	5-year Average	2015-16 <i>As of 4/19/16</i>
Auditory/Oral	13	2.6	2
ALP John Glenn/VCCS	5	1	0
Assessment Center	8	1.6	0
Bellaire Education Center	16	3.2	2
Capitol View ALP	2	0.4	0
Capitol View CAP	18	3.6	5
Karner Blue*	9	1.8	2
Project Return	2	0.4	0
South Campus	15	3	1
WELS-North	12	2.4	3
WELS-South	1	0.2	0
<b>TOTAL</b>	<b>101</b>	<b>20.2</b>	<b>15</b>

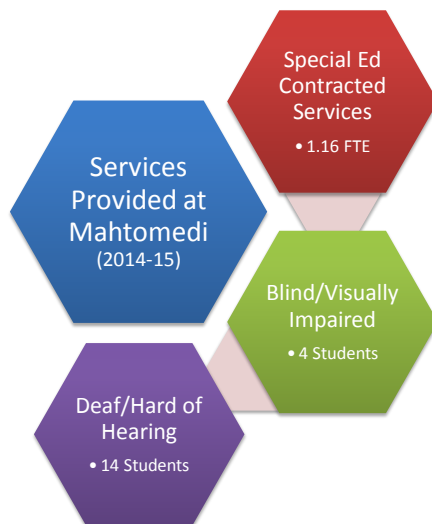
\*Includes former elementary sites prior to opening Karner Blue

## 2014-15 TRANSITIONS FROM SPECIAL EDUCATION TO HOME DISTRICT

Program	Total
ALP John Glenn/VCCS	6
Bellaire Education Center	11
Capitol View ALP	5
Capitol View CAP	1
Karner Blue	13
South Campus	1
WELS-North	0
WELS-South	0
<b>TOTAL</b>	<b>37*</b>

\* 2 of these students are from Mahtomedi

## SERVICES



## FACILITIES PLAN UPDATE



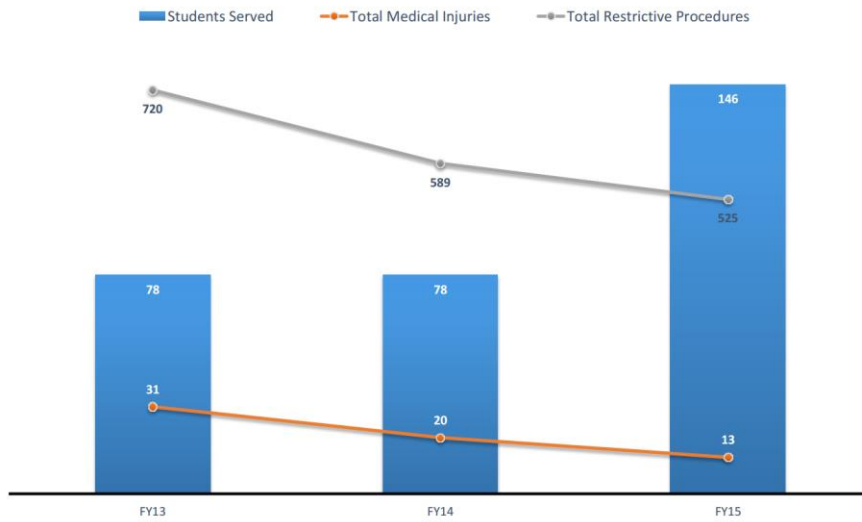
## KARNER BLUE SUCCESS STORIES

- Parents report that their children like, and want to come to school first time ever
- Students are transitioning back to their home schools faster
- Staff have more time to dedicate to teaching and are discussing instructional strategies versus problem solving behavioral issues
- Locked exits are a significant safety improvement for students and staff



## STUDENT AND STAFF SAFETY

### Elementary programs data trends



## PANKALO EDUCATION CENTER UPDATE



## PANKALO EDUCATION CENTER UPDATE

- Greek for “complete beauty”
- Creative Arts theme with four neighborhoods – Harmony, Mosaic, Kaleidoscope, Symphony
- Design Improvements:
  - Natural light will be visible in all classrooms as well as the common areas
  - The seclusion rooms will be designed with softer walls and colors to provide a more calming environment
  - The small windows in the classrooms at elementary student height (pictured above) have been popular. In the new design, these windows will be deeper and include a bench

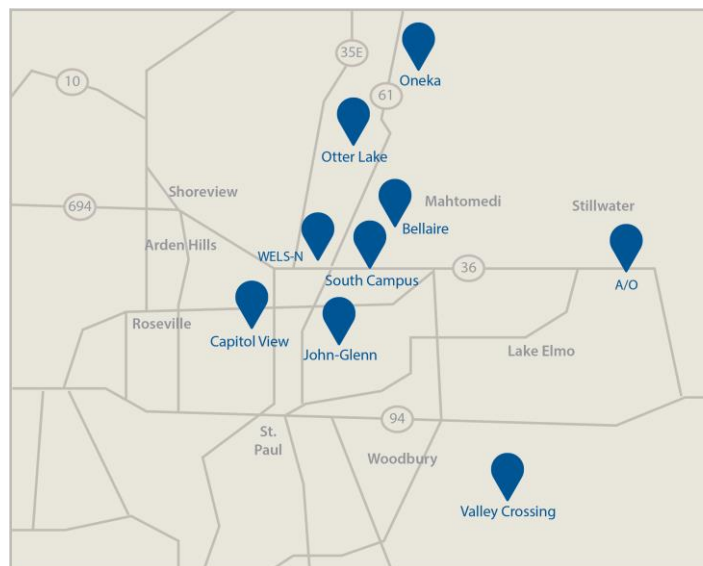
## CAPITOL VIEW CENTER UPDATE



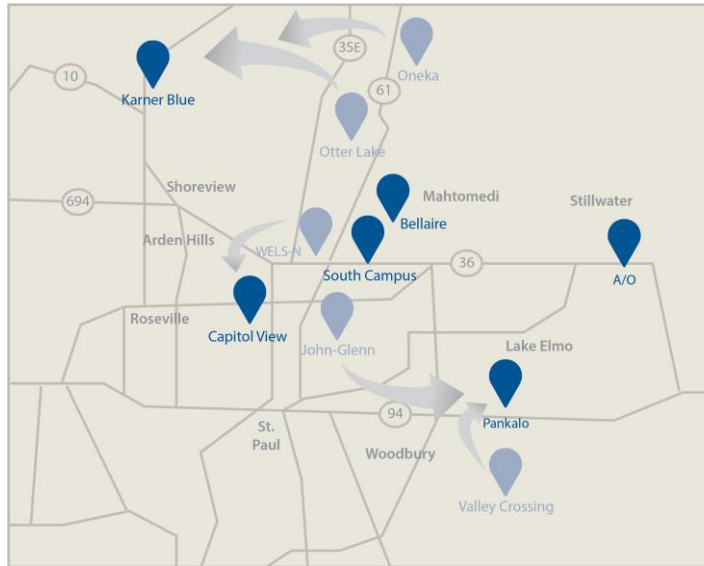
## CAPITOL VIEW CENTER UPDATE

- Building will house multiple level IV special education programs, East View Area Learning Center, conference center and offices
- Design development occurring now. Highlights include:
  - Natural lighting to all classroom spaces; LED lighting for sensory needs
  - Acoustic improvements to minimize disruption and escalation of student behaviors
  - Individual breakout areas available for all programs throughout the building
  - Unique entry points for different student populations
  - Improved specialty teaching areas for art, science and daily living skills
  - Over two acres of outdoor space to program for our students
- Member district transportation leaders input and review on site layout and traffic flow for getting students to and from the building

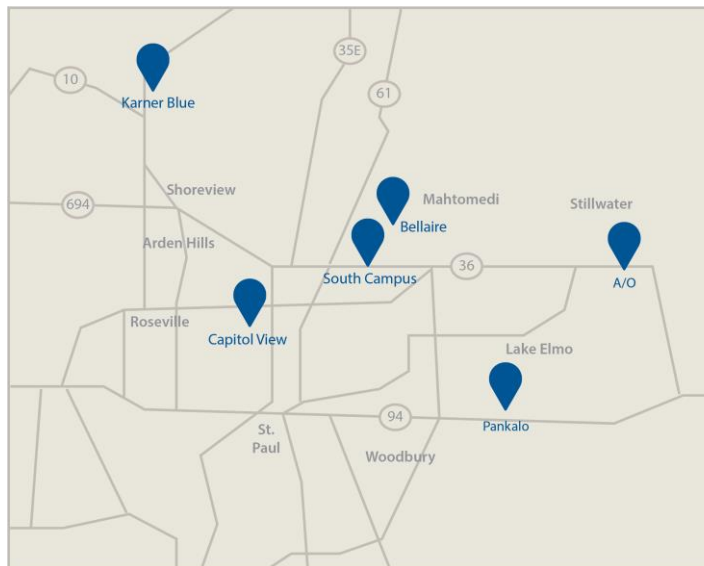
## SPECIAL ED FACILITIES: BEFORE



## SPECIAL ED FACILITIES: TRANSITION



## SPECIAL ED FACILITIES: FUTURE





## CAREER & TECH CENTER ENROLLMENT MAHTOMEDI

# 306

Potential Articulated &  
Century College Credits Earned

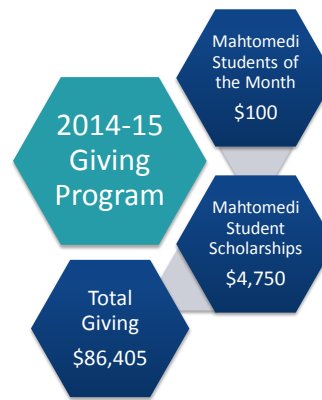
3	0	4	7	2	2	0	0	7	4	1	6	3	1	0	6	0
ANIMAL SCIENCE	AUTO DISMANTLING	AUTOMOTIVE TECHNOLOGY	COMPUTERS/GAME DESIGN	CONSTRUCTION OCCUPATIONS	COSMETOLOGY I	COSMETOLOGY II	DENTAL OCCUPATIONS	DESIGN & DIGITAL MEDIA	DIESEL TRUCKS/ENGINES	EDUCATION/HUMAN SERVICES	EMERGENCY MEDICAL TECH	EEE MARKETING	LAW ENFORCEMENT	MAINTENANCE/ENVIRONMENT	MEDICAL CAREERS	PAES (JOB SKILLS LAB)



## 916 EDUCATION FOUNDATION



- The majority of revenue comes from three major fundraisers:
  - Membership Campaign
  - Gala
  - Golf Tournament
- During the 2015-16 membership campaign, 270 of our employees became members for a total of \$48,005



## THANK YOU!

### **Northeast Metro 916 Intermediate School District**

2540 County Road F East, White Bear Lake, MN 55110

651-415-5100 / [www.nemetro.k12.mn.us](http://www.nemetro.k12.mn.us)



**Connie Hayes**

*Superintendent*

651-415-5656

[connie.hayes@nemetro.k12.mn.us](mailto:connie.hayes@nemetro.k12.mn.us)