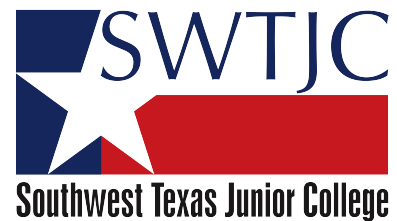


# **DUAL CREDIT PROGRAM DEPARTMENT**



The Dual Credit Program Department facilitates the strategic management of school district partnerships by sustaining a quality and innovative environment to champion educational opportunities for high school students in collaboration with various departments.

# DUAL CREDIT OPTIONS

- Dual Credit Courses
- Technical Programs
- Designated High Schools
- Academy Programs



AC & Refrigeration



Aircraft Maintenance



Automotive



Business Office Tech.



Construction Carpentry



EMT



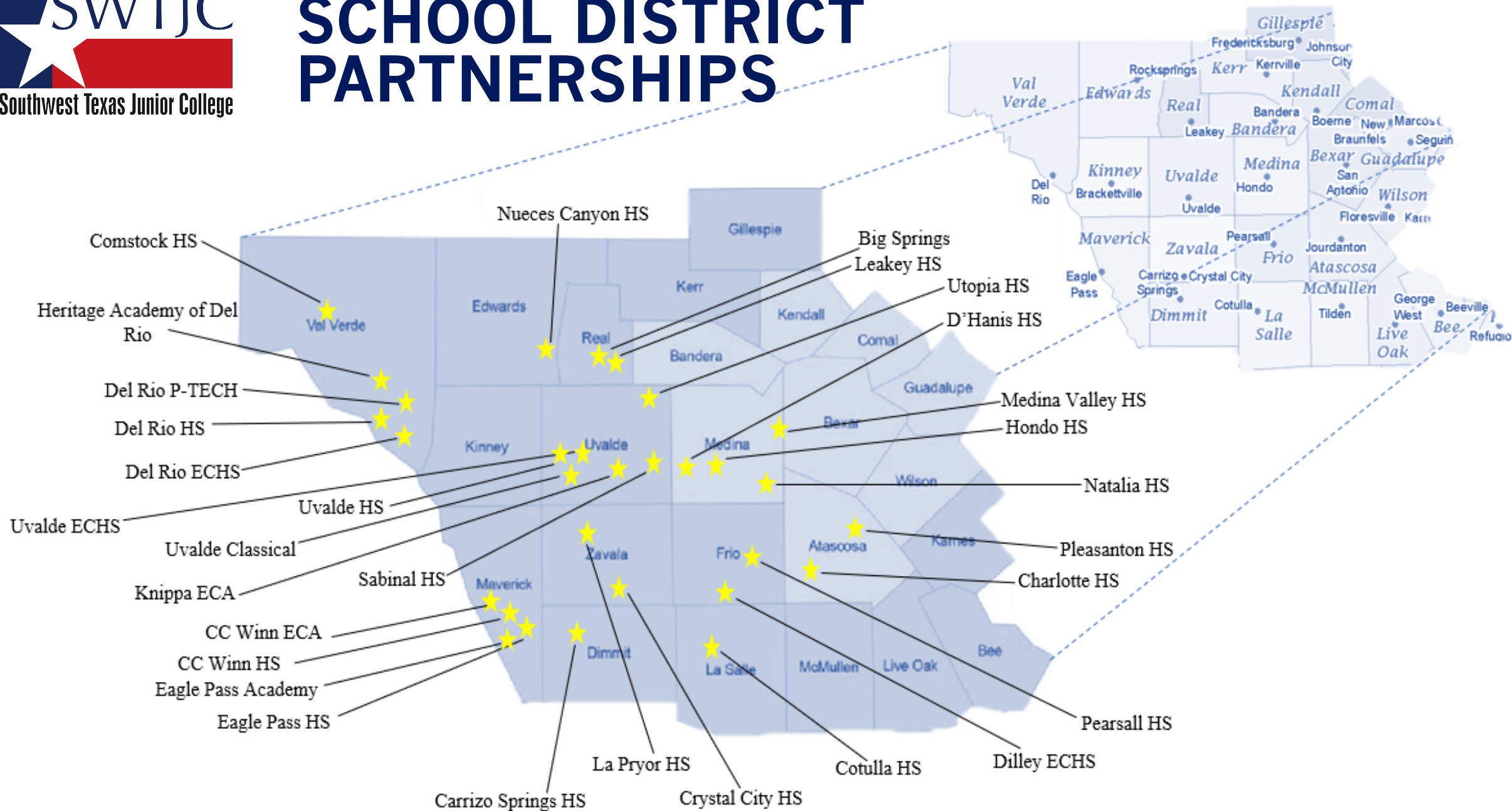
Patient Care Technician



Welding



# SCHOOL DISTRICT PARTNERSHIPS



# PARTNERSHIP PROFILE

Serve over 3,000 dual credit students throughout an 11 county service area.

**24**  
SCHOOL  
DISTRICTS

**31**  
HIGH  
SCHOOLS

**97**  
DUAL CREDIT  
FACULTY

**22**  
TRADITIONAL  
HIGH SCHOOLS

**3**  
EARLY COLLEGE  
HIGH SCHOOLS

**2**  
P-TECH  
HIGH SCHOOLS

**2**  
EARLY COLLEGE  
ACADEMY

**16**  
TECHNICAL  
AGREEMENTS

**4**  
HOME  
SCHOOLS

# INNOVATIONS

## STAFF REFOCUS

- Redistribution of high school liaisons
- Two new employees

## INFORMER

- Automated rosters
- Scheduling
- Student Status Report

## AUTOMATION

- Implementation of batch registration
- Increased turnaround time tenfold

## LONG TERM GOALS

- Student Self Registration
- High School Account/Dashboard



# DUAL CREDIT PROGRAM TEAM



Director of Dual Credit Program

Savanna M. Martinez



Coordinator of Dual Credit Program

Damacio Sanchez



Coordinator of Dual Credit Program

Anahi Ramirez



Dual Credit Program  
Administrative Assistant

Nayelli Avila

# HIGH SCHOOL LIAISONS



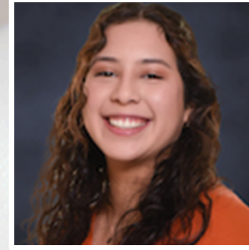
Savanna

- CC Winn ECA
- CC Winn HS
- Del Rio ECHS
- Medina Valley HS



Damacio

- Big Springs
- Carrizo Spring HS
- Crystal City HS
- D'Hanis HS
- Del Rio HS
- Del Rio P-TECH
- Heritage Academy of Del Rio
- Leakey HS
- Nueces Canyon HS
- Sabinal HS
- Uvalde Classical
- Uvalde HS

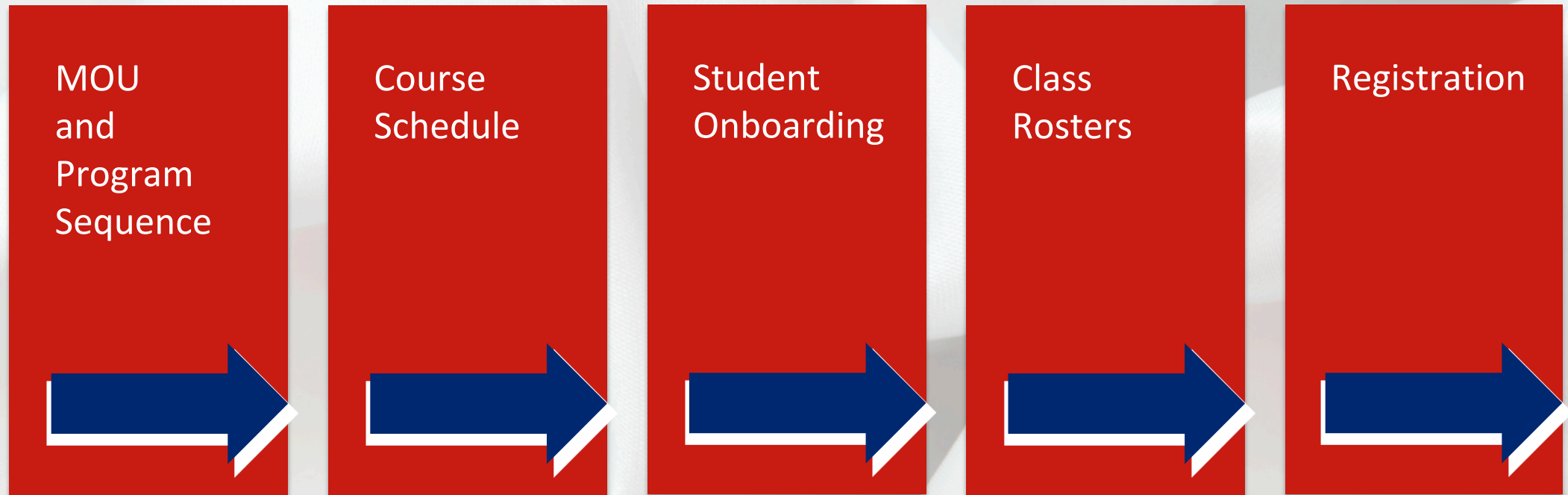


Anahi

- Charlotte HS
- Comstock HS
- Cotulla HS
- Dilley ECHS
- Eagle Pass Academy
- Eagle Pass HS
- Hondo HS
- Knippa ECA
- La Pryor HS
- Natalia HS
- Pearsall
- Pleasanton
- Utopia HS
- Uvalde ECHS



# DUAL CREDIT PROCESS

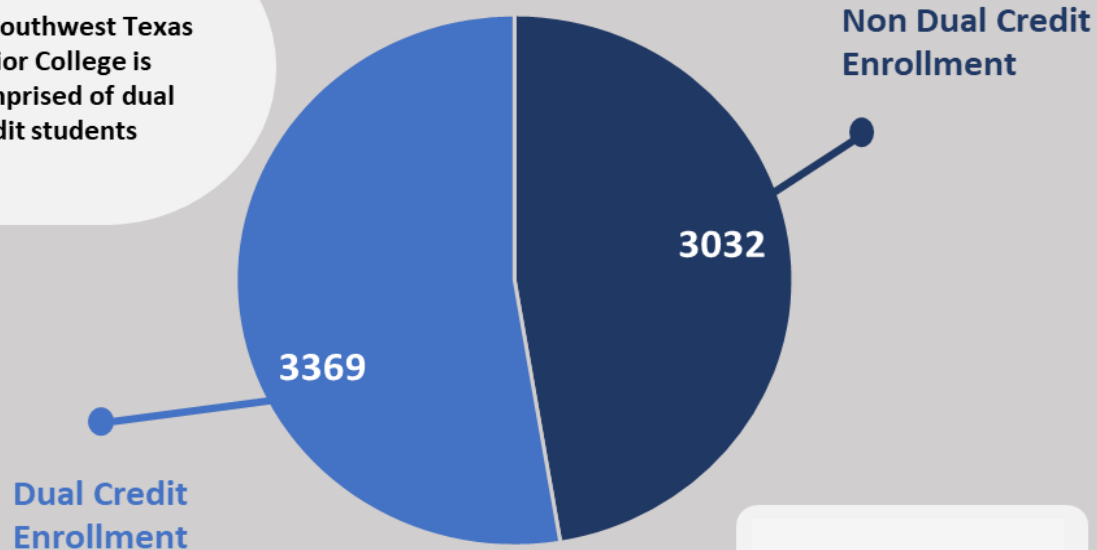


**AERIAL VIEW OF OPERATIONS**

# DUAL CREDIT ENROLLMENT 2023-2024

## Fall 2023 Student Enrollment

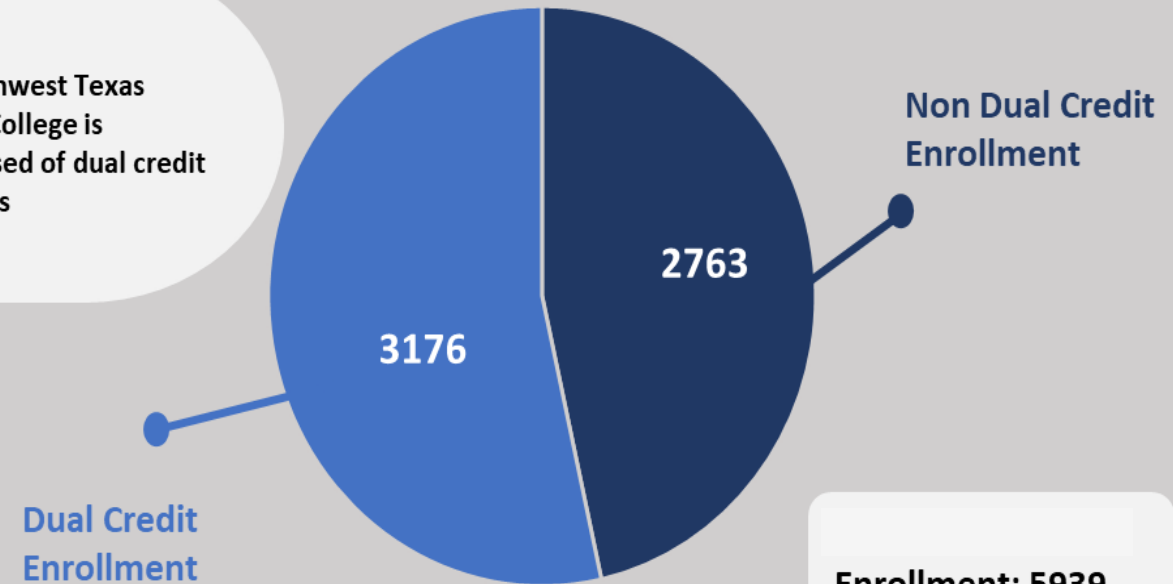
53%  
of Southwest Texas  
Junior College is  
comprised of dual  
credit students



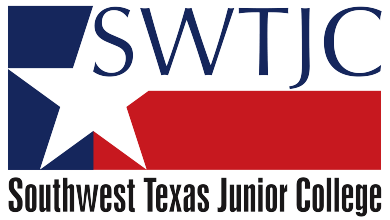
Enrollment: 6401

## Spring 2024 Student Enrollment

53%  
of Southwest Texas  
Junior College is  
comprised of dual  
credit students

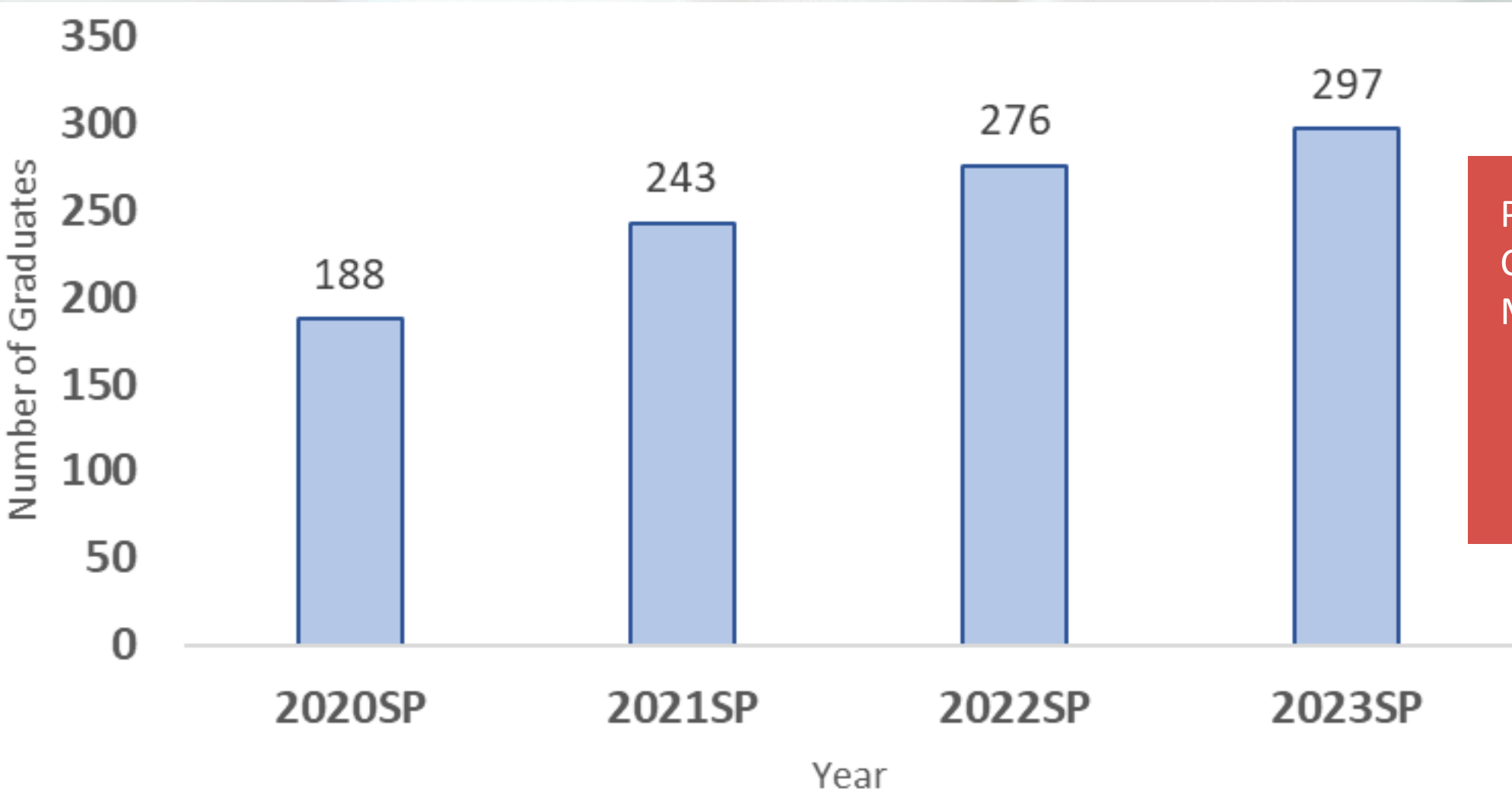


Enrollment: 5939



# DUAL CREDIT GRADUATES

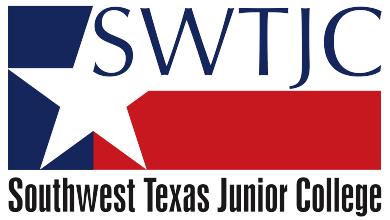
PER YEAR OVER A 4-YEAR SPAN



PROJECTED DUAL  
CREDIT GRADUATES  
MAY 2024

490

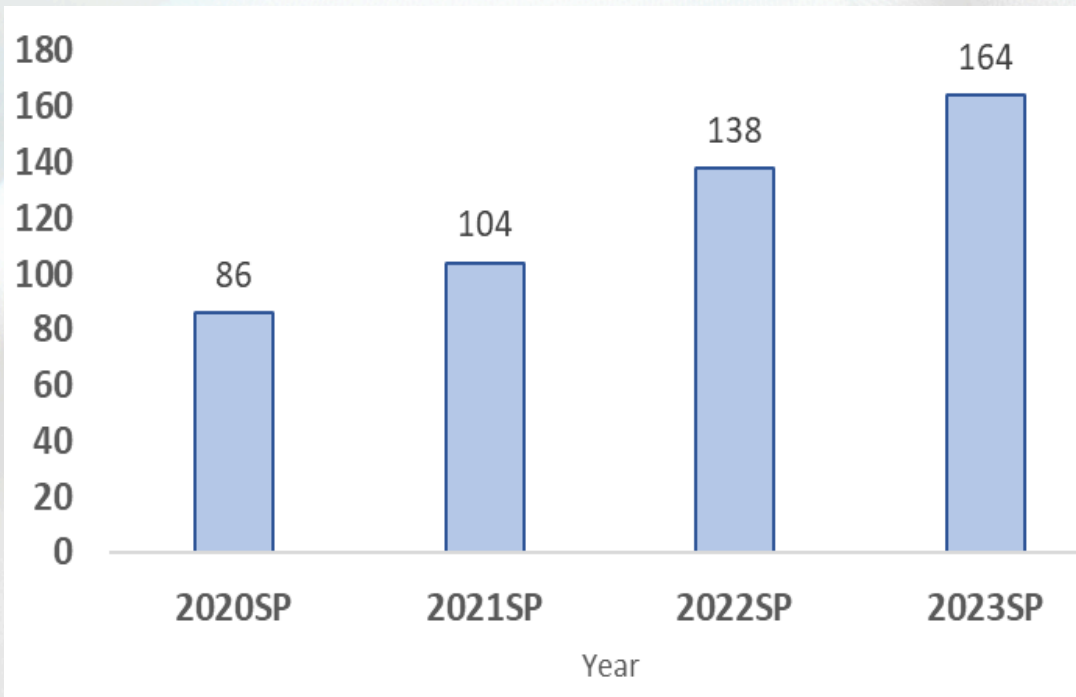




# CERTIFICATES AND DEGREES

PER YEAR OVER A 4-YEAR SPAN

**CERTIFICATE AWARDED**



**2-YEAR DEGREE AWARDED**



# QUESTIONS?

