

Early Learning & Literacy Grant-Board Report

October 2022

Student Numbers: Total- 43

| | | |
|-------------------|--------------|-------------------------|
| Chignik Bay- 1 | Kokhanok- 6 | Port Alsworth- 5 |
| Chignik Lake- 2 | Igiugig- 2 | Port Heiden- 4 |
| Chignik Lagoon- 4 | Newhalen- 11 | Levelock- 3 |
| Perryville- 3 | Nondalton- 2 | Pilot Point- No program |

Classroom Spotlight

| | | |
|--|--|---|
|  <p style="text-align: center;">Letter A</p> |  <p style="text-align: center;">First Day Smiles</p> |  <p style="text-align: center;">Creative Block Play</p> |
|--|--|---|

CHILD 2 Grant: Cultural Heritage Improves Learning & Development

| | | | |
|---|---|--|--|
| <p><i>Goal 1- Prepare Alaska Native preschool students with the social/emotional, motor, cognitive and language/literacy skills needed to succeed in kindergarten.</i></p> | <p><i>Goal 2- Provide project staff on-going, formal professional development opportunities to promote cultural, social/emotional, motor, cognitive, and language/literacy development with preschool students.</i></p> | <p><i>Goal 3- The third objective of the CHILD project is to ensure culture identity is the foundation of early learning experiences.</i></p> | <p><i>Goal 4- The fourth and final objective is to ensure family engagement is fundamental in early learning experiences by building the capacity for remote early learning.</i></p> |
| <p>~ Provide ½ day preschool ~ Employ staff from the local community ~ Utilize research-based instructional resources and strategies focusing on developmentally appropriate practices and intentional instruction.</p> | <p>~ Provide yearly face-to- face <i>inservices</i> to increase ELCs knowledge and skills in early childhood development partnership curriculum, strategies for play-based learning, developmental screening, classroom setup and management, and</p> | <p>~ Create sustainable family remote learning AN cultural activities. ~ Develop a CHILD digital application (app) with a focus on AN language acquisition and literacy development. ~ Create children’s books based on local elder stories.</p> | <p>~ Implement and regularly update individualized family learning plans. ~ Provide quarterly family personal visits ~ Provide quarterly preschool family group activities. ~ Provide access to: Culturally relevant family engagement</p> |

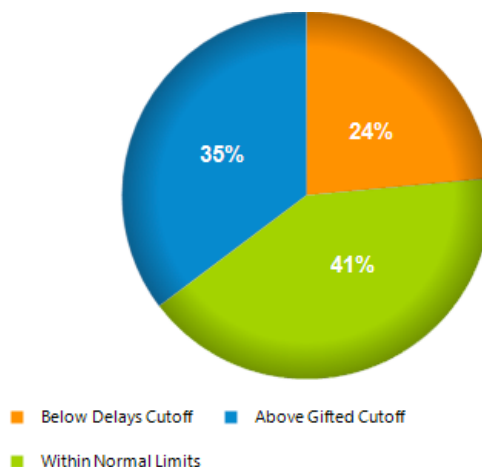
| | | | |
|---|--|---|---|
| <p>~ Utilize a research based progress monitoring tool to monitor student growth throughout the year.</p> | <p>strategies for integrating AN culture and language into preschool classrooms.</p> <p>~ Provide opportunities for all staff to attend <i>conferences & locally or state offered trainings and webinars.</i></p> <p>~ Utilize a project-wide Early Childhood Specialist (ECS) and district-wide District Coordinators (DCs) to provide whole group and one-on-one planning, instructional, and <i>mentoring support</i> through remote learning, site visits, CLASS coaching, webinars, and audios.</p> <p>~ Utilize a <i>professional development matrix and performance pay rubric</i> to incentivize intentional training and meet individual staff needs.</p> | <p>~ Train and support ELCs in integrating AN cultural activities and local Native languages into preschool classrooms.</p> <p>~ Secure AN children’s literature for family checkout library.</p> | <p>kits for checkout- BRIDGE, AN cultural activities, CHILD app to support Native language acquisition and literacy development, and AN children’s literature checkout library.</p> <p>~ Incorporate other meaningful remote learning opportunities by bringing outside visitors into classrooms and homes from around the region/state (Elders sharing stories, AK author read alouds, cultural activities demonstrations, Native language speakers, virtual field trips, etc.).</p> |
|---|--|---|---|

PreK Updates

| PD Opportunities | Family Engagement |
|---|--|
| <ul style="list-style-type: none"> ● PK inservice topics- Grant Overview & Initiatives, Teaching Strategies Gold, Family Engagement, The Power of Playful Learning, CLASS Observations & Coaching, Planning & Scheduling ● monthly audio: Oct. 10 ● Book Study ● CLASS coaching | <ul style="list-style-type: none"> ● 4 Family Events ● 4 family visits ● BRIDGE Bags ● Lending Libraries |

Data- Brigance Early Childhood Screener

*Missing Levelock & PTH scores



CLSD Literacy Grant- State

- Robust Inservice/Conference Opportunities
 - Fall 2022- Katmai Inservice (Aug. 31-Sept. 3)
 - Fall 2022- Alyeska Inservice (Oct. 19-21)
- Professional Development Webinars, Trainings, Publication, or Other
 - Teacher Selected & District Provided
 - RTI Conference: Jan 28-29, 2023
 - Alaska Learns: <https://aklearns.org/>
- Literacy Mentoring Team
 - Provided to 1st & 2nd year teachers
 - 7 Mentors & 9 Mentees participated
 - 8 Participating in the Alaska Statewide Mentor- Training Program FY22-23 (including Amber)
 - 3 Mentors Participating- Book Study: “Coaching for Equity” (including Amber)
- Literacy Training for Classroom Aides
 - Building Classroom Capacity
 - Compensation provided for participation
 - Alaska Learns: <https://aklearns.org/>
- Tuition Stipends for Literacy Courses Completed
 - Offered to staff upon completion of a literacy focused upper-level course
- Literacy Focused Social Media Posts for Families
 - FY22-23 Theme: **Reading Through the Seasons!**
 - Check them out on District Facebook
 - Resources, links & games provided to all families across the district

Candice Berner- Early Literacy Program

- Number of children: 110
- Distributed all in Fall 2022
- Over 14,000 titles in homes across the district!