

ANNUAL REPORT TO THE PUBLIC
2021-2022



DULUTH
HEADSTART/
PRESCHOOL



Mission

The mission of Duluth Head Start is to provide services for income eligible preschool children and their families. These services include opportunities to enhance social and cognitive skills, increase health and wellness and build upon family strengths. Working together, we strive to create a strong learning community in order to achieve success both in the classroom and beyond.

We offer preschool services in seven of Duluth's elementary schools.

Our state funded Head Start program offers home visiting services to families- including families experiencing homelessness. This includes our spots for Early Head Start. We have 12 spots reserved for children from birth through age three. Many preschool age children take advantage of the McKinney-Vento Act and are bussed to their home schools while their families are without housing.

Funding

Duluth Head Start receives grants from the Office of Head Start and the State of Minnesota through the Minnesota Department of Education. Additionally, we receive funds through the State Pathway II Early learning scholarships.

Federal Head Start Budget

\$2,529,318

This money funds personnel (\$2,240,806). The remainder is spent on things that support staff to work district wide to support families - cell phones, taxi services for families, mileage reimbursement, and classroom supplies. Indirect costs to the district also come out of this budget. \$28,958 from this budget is earmarked for training and technical assistance for both staff and families. This money funds us to serve 224 children, though our numbers remained lower than that likely due, in part, to the continuing impact of Covid-19. We served 206 families in the 2021-22 school year. 47 of those were families of three year olds whose child returned for a second year.

State Head Start Budget

\$396,539

These funds provide our program the opportunity to offer several unique ways to support families. Families in Transition staff is supporting 22 families experiencing homelessness and a Home Base option for 12 families who, for many reasons, cannot access our classrooms across the city. \$372,561, is dedicated to staff wages and fringe benefits, while the remainder is spent on things to support staff such as cell phones, taxi services for families to attend class, socializations, doctor appointments, classroom supplies, and mileage reimbursements. State funded enrollment for 2021-22 was 34.

Pathways II Early Learning Scholarship Award

\$191,040

This money supports the classroom with additional paraprofessional assistance to reduce the class size and assist in serving food in our classrooms. We serve breakfast, lunch, and snacks in our full day classrooms, and breakfast and lunch, or lunch and snack in our half day programs. Serving meals in our rooms allow us the opportunity to both provide nutritious meals, but also to do nutrition education. Self- help skills and engaging in discussions at the table are also time well spent in an early childhood classroom.

Audit

The audit that was done for the 2021-2022 school year shows there were no audit findings for Head Start. A copy of the audit is available through our office. Follow the contact information at the end of this report.

Duluth Preschool believes that all children should have strong bodies, strong minds, and strong families.

STRONG BODIES

Addressing Health Needs

Part of the comprehensive service provided by Head Start is to assist families with their health needs.

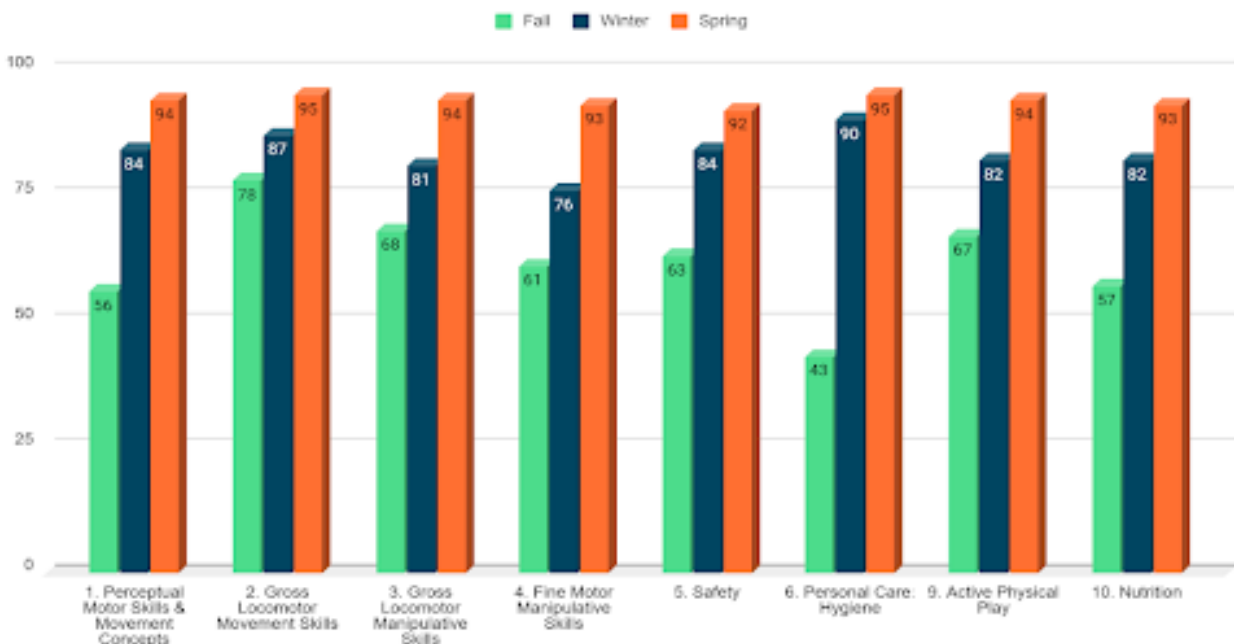
We work to ensure all families have a source of ongoing and continuous health insurance. With our cumulative enrollment at 206 children, 98% had health coverage at the end of the year. 97% had an ongoing source of continuous, accessible health care. At the beginning of the year, only 16% of students were up to date on their yearly physical exams, and at the end of the year that number was 60%. 80% percent of our children were up to date on their immunizations. 84% percent have what we call a Dental Home—meaning they have an identified dentist. 64% of students received preventative dental care during the school year.

Nutrition Services

A licensed nutritionist works with families to support access to healthy foods, including students with special dietary needs.

The following slide shows measured growth of students in the Physical Development and Health Domain.

Head Start 4 YO's Physical Development & Health



Collaboration with Duluth YMCA

With our YMCA collaboration, 72 preschool children went to a six week anti drowning program at the Y called, "Safety Around Water".

Nine families tried out the Y for the first time, and 2 received scholarships to regularly attend the YMCA - one of them calling it a lifesaver as she experienced personal upheaval at that time.

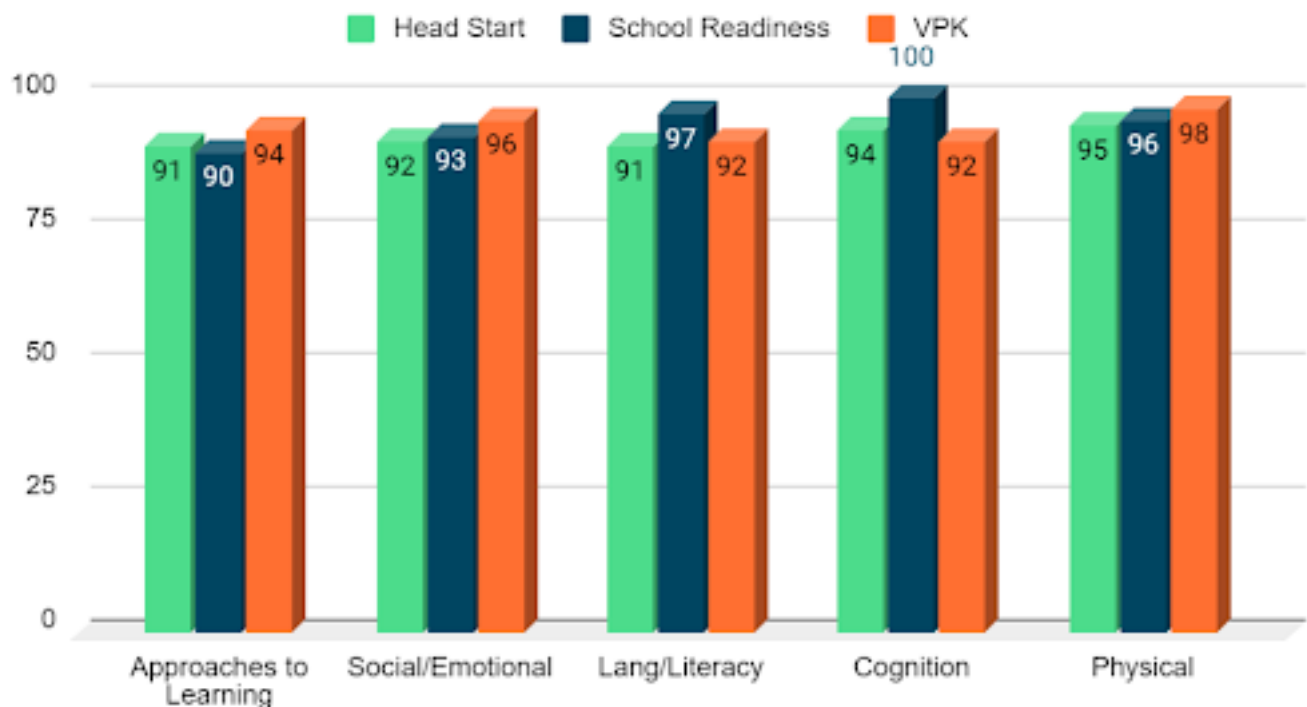
STRONG MINDS

Preparing Children for Kindergarten

Our assessment tool is the Desired Results Developmental Profile. It measures all domains of learning. Data is collected three times per year.

The following graph compares how four year old children from all three funding streams performed across all domains.

Program Comparison 4 YO's Spring



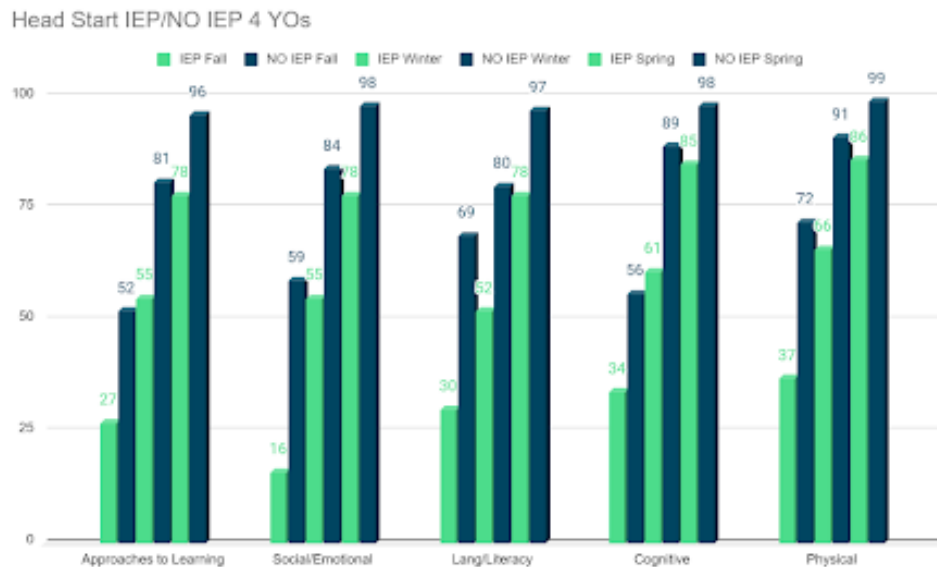
29 HEAD START CHILDREN WERE EVALUATED FOR SPECIAL EDUCATION DURING THE SCHOOL YEAR

38 STUDENTS CAME INTO OUR PROGRAM ON IEPs

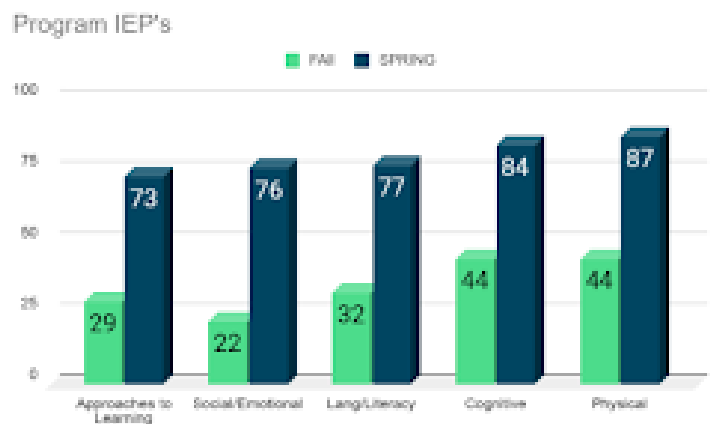
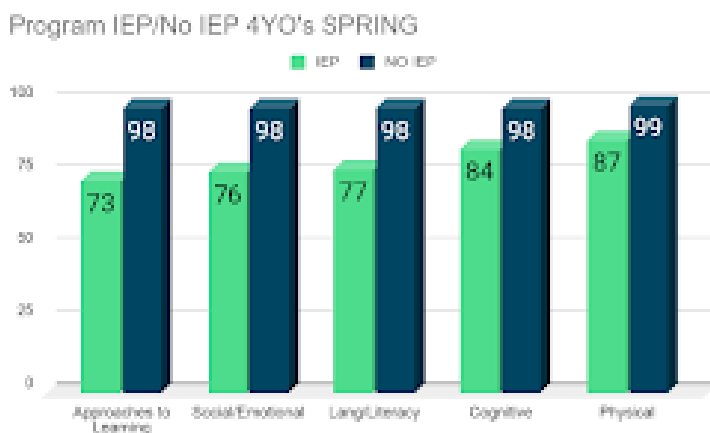
25 OF THOSE STUDENTS WERE DIAGNOSED WITH A DISABILITY

30% TOTAL NUMBER OF STUDENTS SERVED W/ IEPs

As a fully inclusive program, we pay close attention to the achievement of students on IEPs, making sure their rate of growth is similar to all other student groups. The following graph illustrates student growth as compared to general education students.



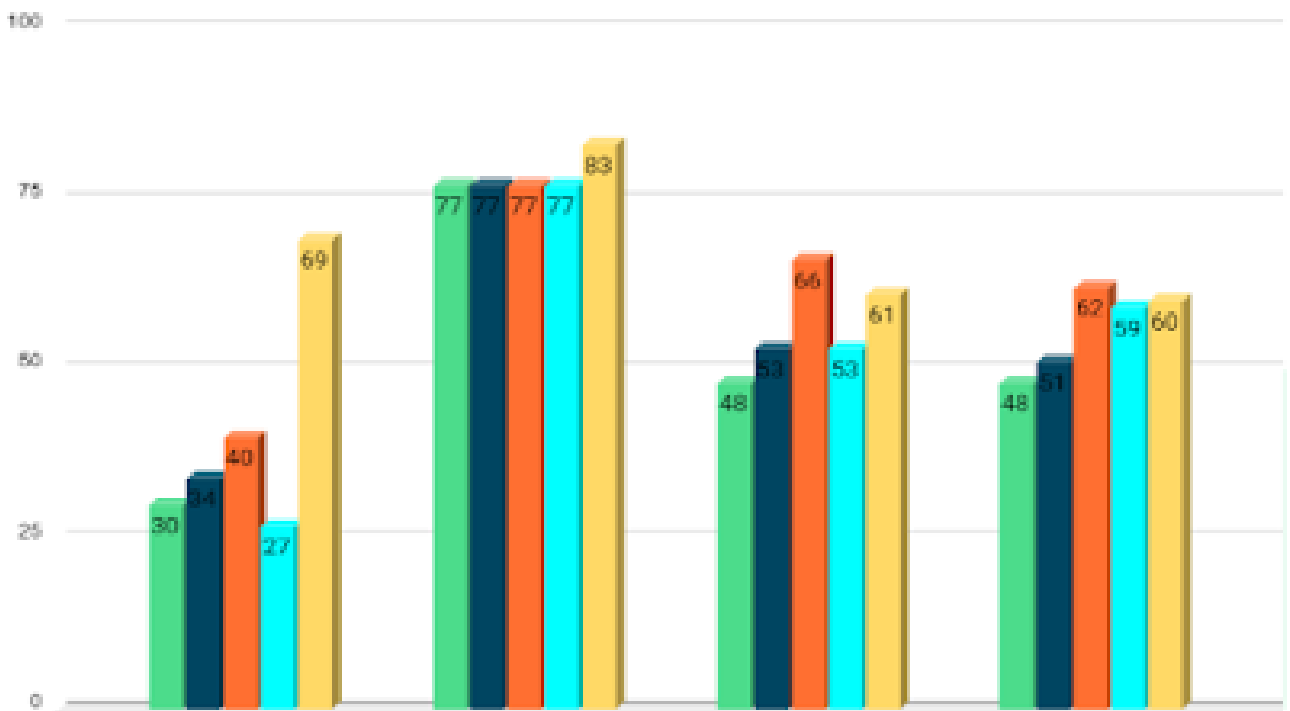
A closer look:



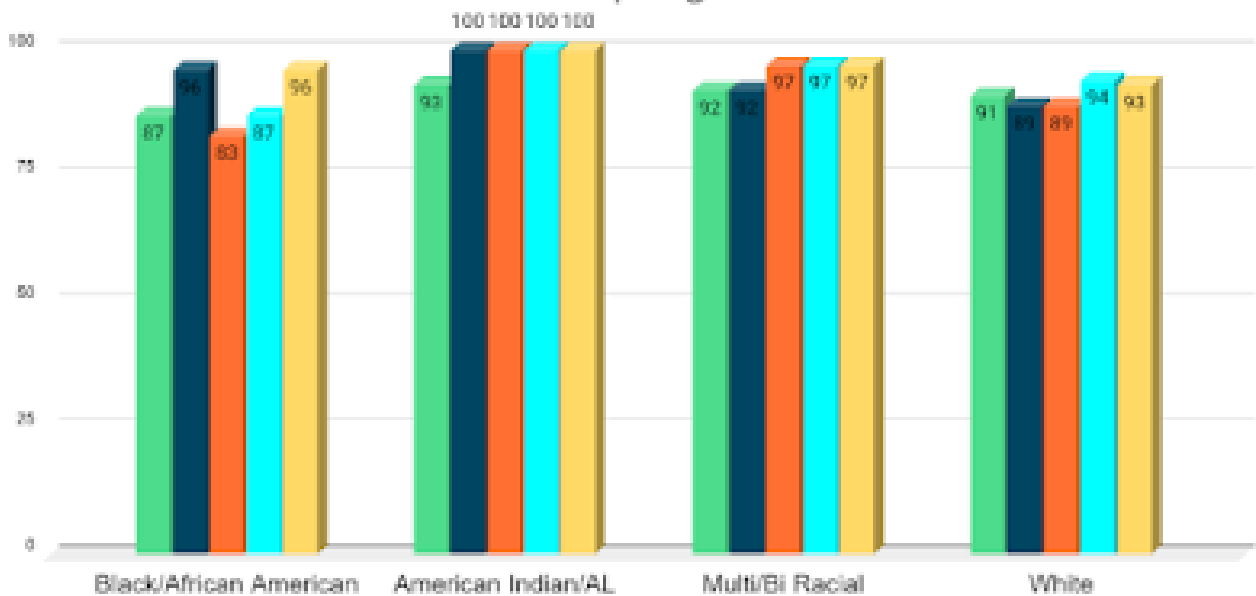
With an eye on equity, we monitor growth of all sub groups of students.

Head Start 4 YO's by Race Fall

 UPDATE



Spring



Attendance

Despite several variations of Covid-19, attendance was 80% in Head Start and 85% in Preschool overall.

UMD/ Antioch University Research Project

Our program participated in a study examining the impact of nature based practices and their impact on executive functioning with UMD and Antioch University. Preliminary results indicate that some integration of nature-based practices may be an effective way to reduce the executive function gap between higher and lower SES children. When the research is fully published, we will share the document.

STRONG FAMILIES

Parent Family and Community Engagement

Policy Council

Policy Council was regularly attended by 6 parent representatives. We held meetings virtually until April of 2022, when we went back to in-person meetings.

Parent Family Community Engagement

According to our Family Survey, 100% of respondents felt Family Advocates were helpful in guiding them to community resources. 333 families participated in at least one Family Engagement Event. Fifty six families completed Family Partnership Agreements, in which a goal is set and steps are taken to achieve that goal. Of the six areas of growth monitored, the most growth happened in the area of Positive Parent-Child Relationships.

Senator Jen McEwan

Senator Jen McEwan visited our state funded FIT program, Oshki-Inwewin, and the Lowell Half Day classroom, which has done a spectacular job of nature based programming.

Community Partnerships

In the 2021-2022 school year, we partnered with the following organizations:

Antioch University
Arrowhead Economic Opportunity Agency
Children's Dental Service
CHUM: Steve O'Neil Apartments
City of Duluth: Washington Center
Duluth Children's Museum
Duluth Public Library: Every Child Ready
Duluth Duluth Zoo
East Side Neighborhood Development Company
Family Freedom Center
First Witness
Great Lakes Aquarium
Help Me Grow
ISD 709: Early Childhood Special Education, American Indian Education Department; Adult Education
Kid's Closet
Lincoln Park Child and Family Collaborative
Minnesota Reading Corps
Safe Haven Shelter
Salvation Army
St. Luke's Pediatrics
Star of the North Maternity Home
Thrive
UM Extension Service
University of MN Duluth: College of Education and Human Service Professions
YMCA

Duluth Preschool

Our classrooms blend funding from School Readiness and Head Start to deliver services that meet the Head Start Performance Standards. Voluntary PreK is also under the umbrella of Duluth Preschool.

We are the only Head Start program in the state of MN in which a school district is the grantee. Duluth Public Schools have had a Head Start program since its inception in 1965. For more information regarding our program contact us online, by phone, or in person.

We welcome you!

**Duluth Head Start
4316 Rice Lake Road
Duluth, MN 55811
218-336-8815
www.isd709.org**

