



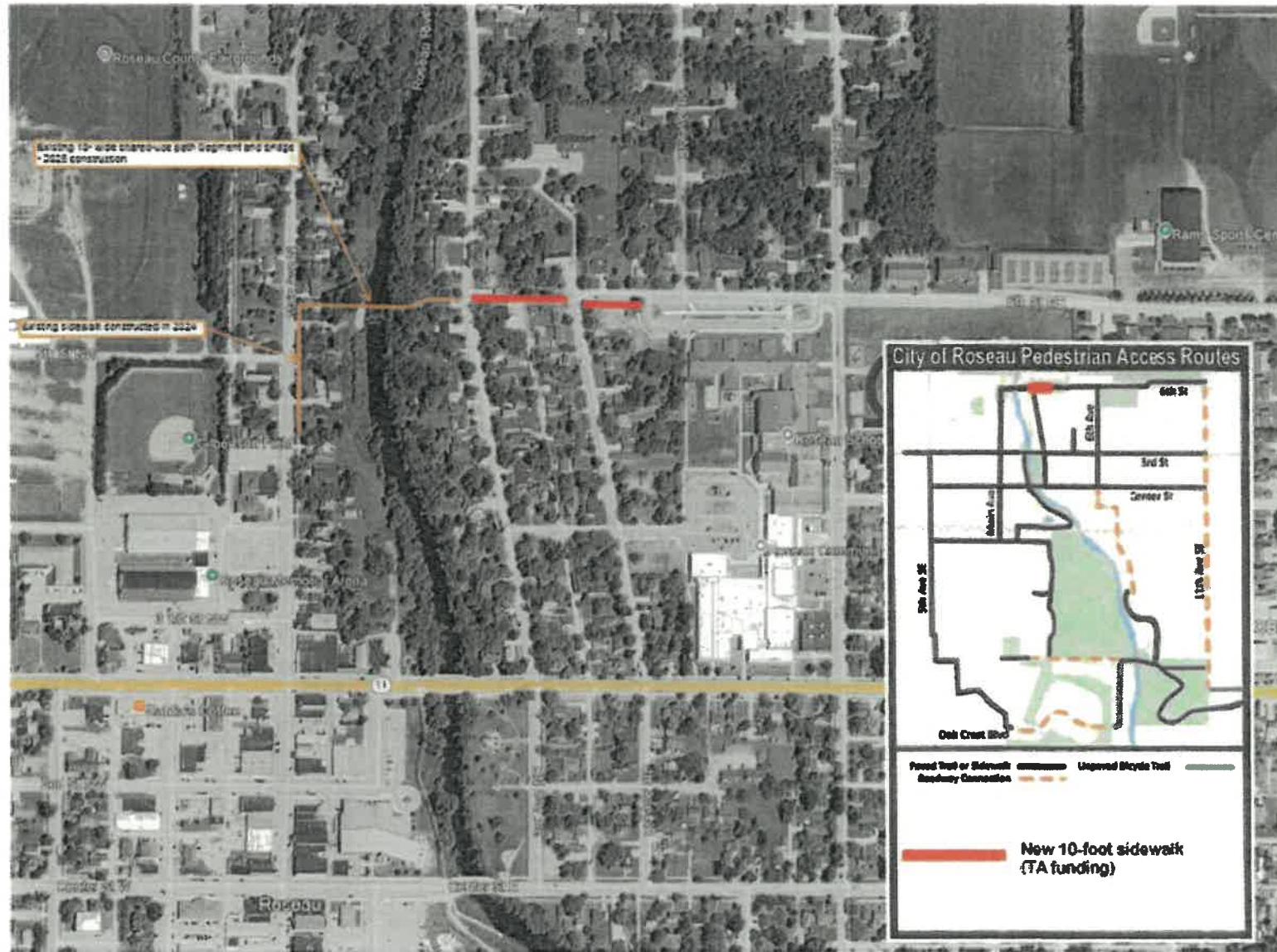
Roseau Pedestrian Bridge Phase II



Project Summary

To ensure the new Roseau River Pedestrian Bridge reaches its full potential, the City of Roseau is requesting TAP funding to complete previously deferred safety and infrastructure elements. By funding the remaining 500 feet of paved trail and safety lighting, this project will provide the continuous, secure trail connection originally envisioned for the community.

Project Location



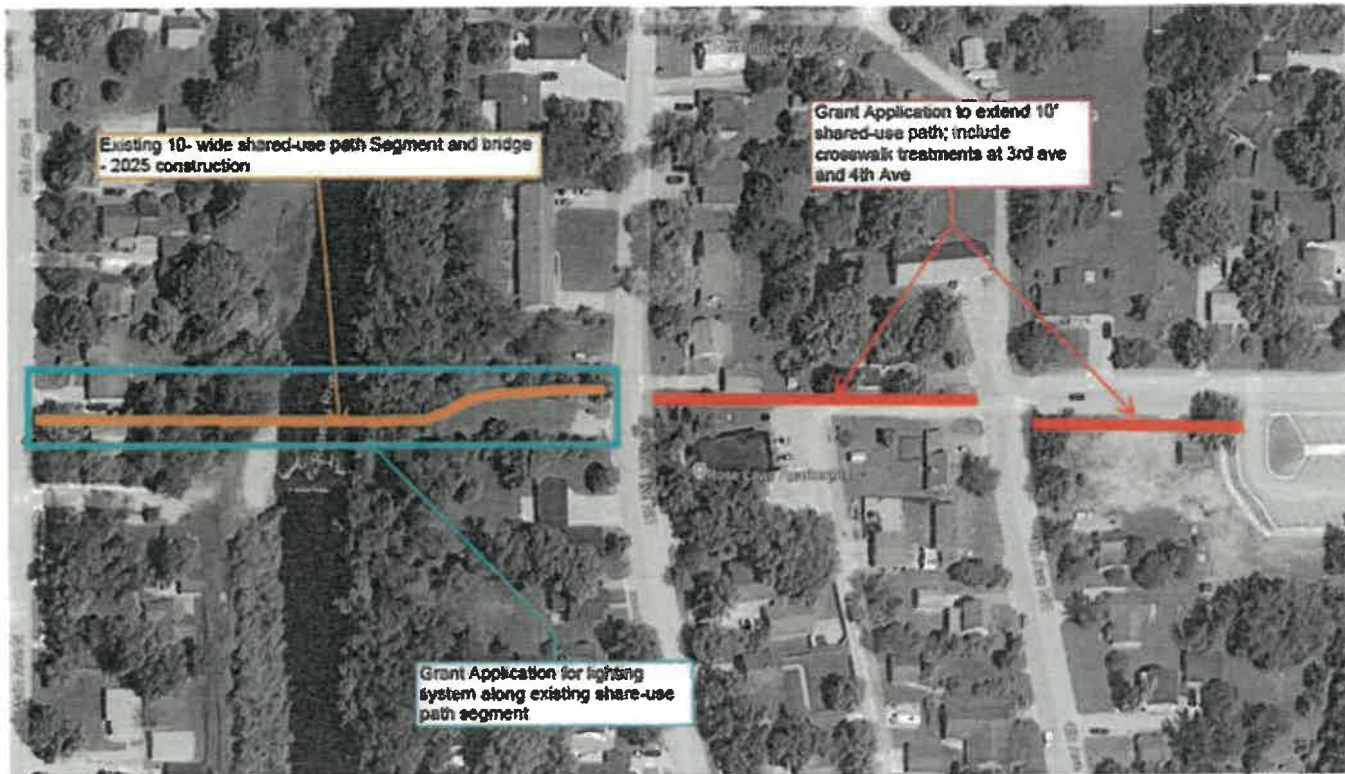
Project Components

- ▶ 500' of paved 10' wide trail connecting Roseau Pedestrian Bridge to Roseau Community School
- ▶ Bridge and trail safety lighting (7 fixtures)



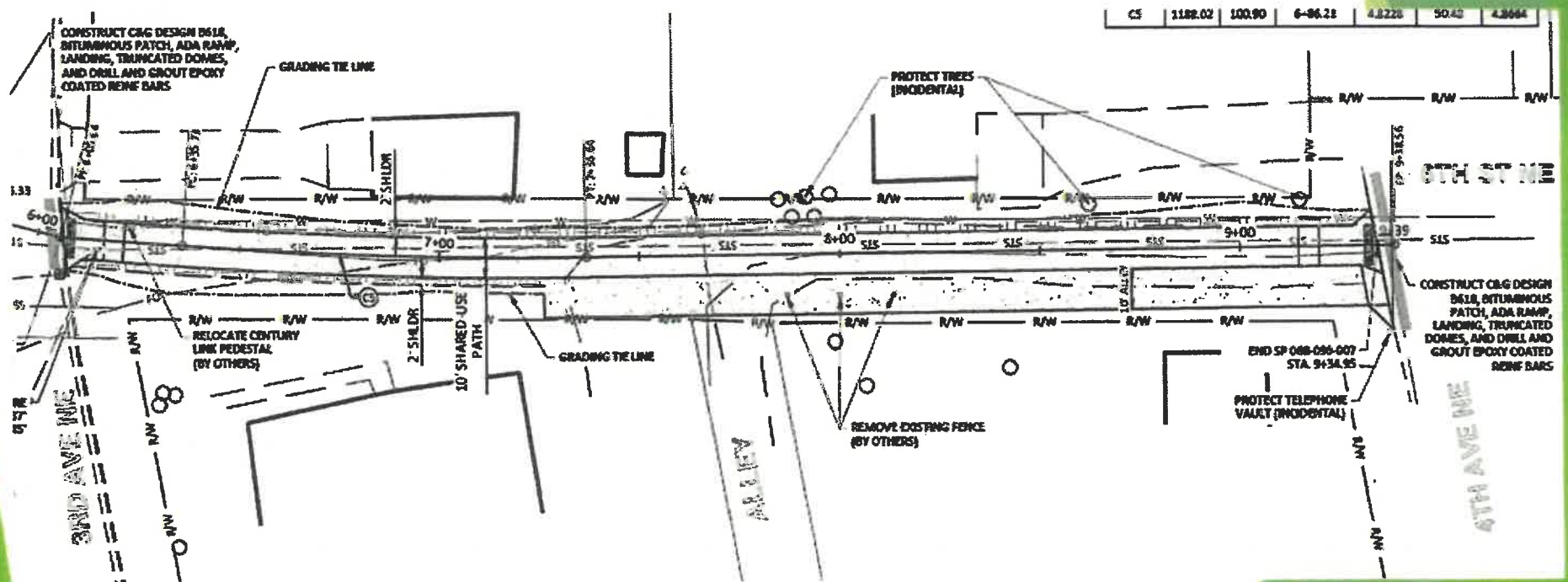
Proposed Trail Alignment on 6th St NE
(Looking West towards ped bridge)

Project Components



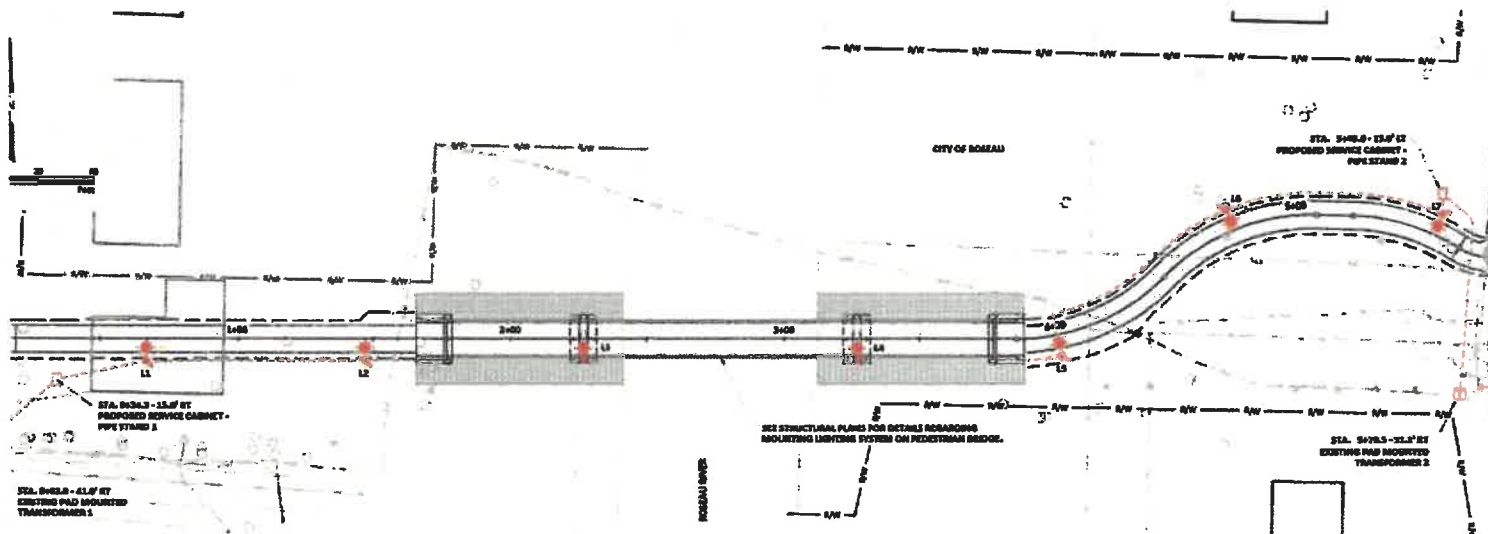
Project Components

Trail Segment



Project Components

Lighting Plan



Project Costs & Funding

▶ **TOTAL PROJECT COST - \$410,882**

- ▶ 10' Concrete Walk - \$190,882
- ▶ Lighting - \$150,000
- ▶ Design & Construction Administration - \$70,000

▶ **PROJECT FUNDING - \$410,882**

- ▶ Transportation Alternatives Grant - \$272,705.60
- ▶ Local Contribution - \$138,176.40
 - ▶ City of Roseau - \$69,088.20
 - ▶ DNR Trails Grant - \$69,088.20 (to be applied for, not required to complete project)