



Parkrose
High School

AYP Data and Action Plan

2010-2011



Parkrose
High School

Oregon Report Card

Year

Rating

AYP

06-07

Satisfactory

Not Met

07-08

Satisfactory

Not Met

08-09

Satisfactory

Not Met

09-10

In Need of Improvement

Not Met

10-11

OUTSTANDING

Not Met



Parkrose
High School

ETHNICITY

Year	White	Black	Hispanic	Asian	Native American
02-03	67%	10%	8%	14%	1%
03-04	63%	11%	9%	16%	2%
04-05	59%	11%	9%	18%	2%
05-06	58%	14%	10%	16%	2%
06-07	55%	16%	10%	17%	2%
07-08	52%	14%	12%	19%	2%
08-09	49%	15%	14%	19%	2%
09-10	45%	13%	19%	18%	5%
10-11	44%	11%	20%	21%	6%

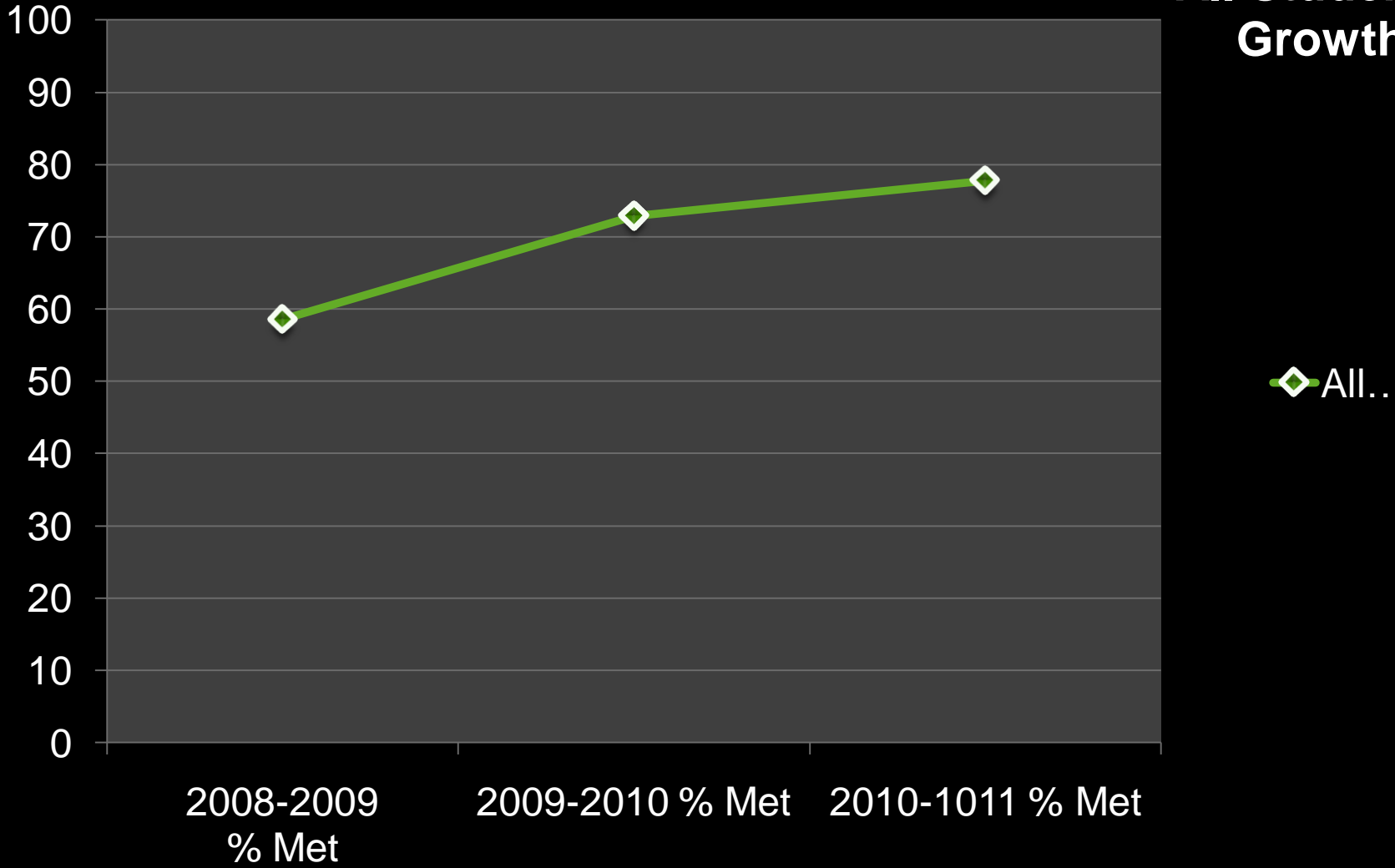
Reading - PARTICIPATION



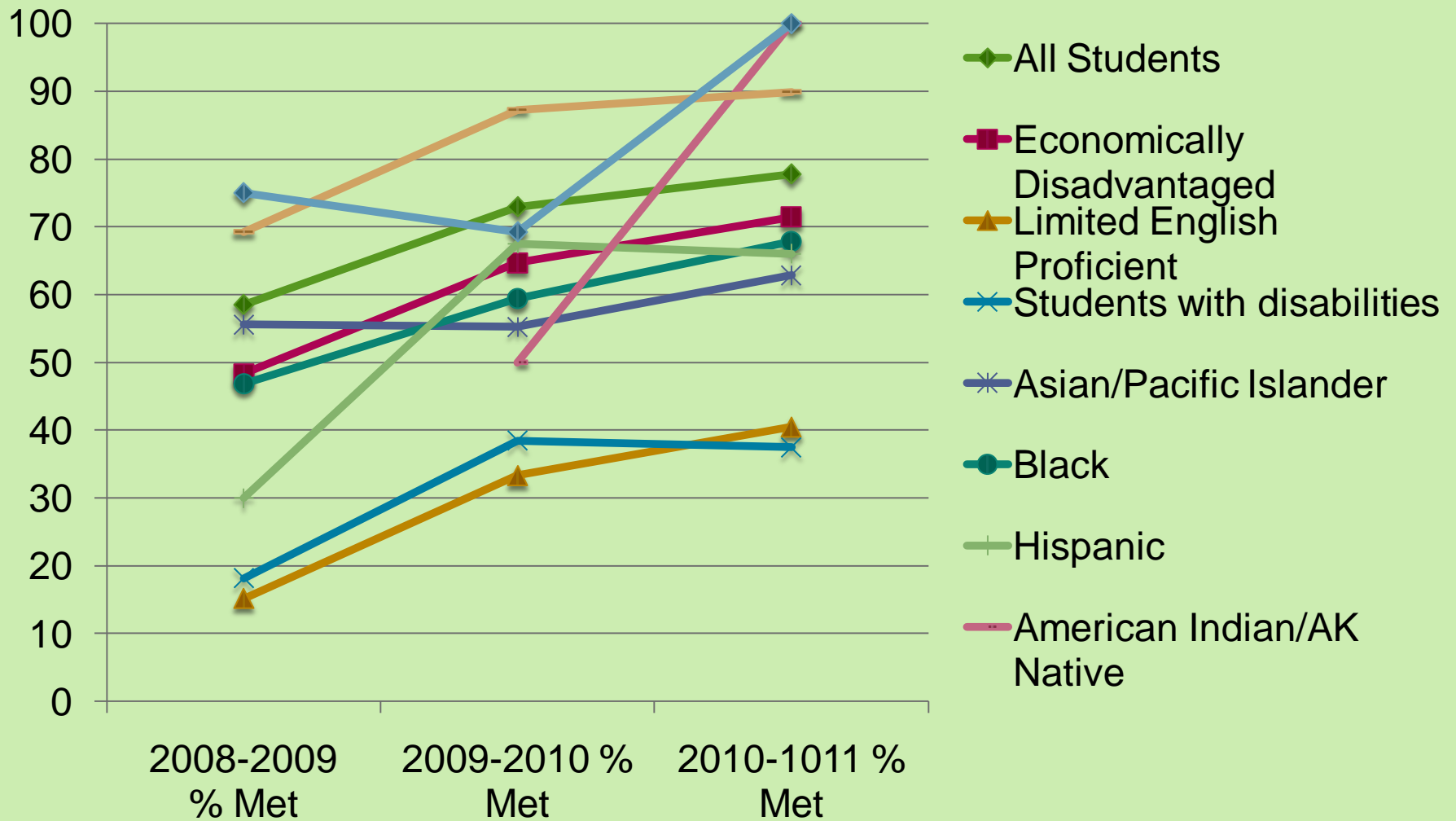
Parkrose
High School

Reading	2007-2008	2008-2009	2009-2010	2010-2011
All Students	MET	MET	MET	MET
Economically Disadvantaged	MET	MET	MET	MET
Limited English Proficient	MET	MET	MET	MET
Students with Disabilities	MET	MET	MET	MET
Asian/Pacific Islander	MET	MET	MET	MET
Black	MET	MET	MET	MET
Hispanic	MET	MET	MET	MET
American Indian/Alaskan Native	MET	MET	MET	MET
White	MET	MET	MET	MET
Multi-Racial/Multi-Ethnic	MET	MET	MET	MET

Reading 2010-2011 All Students Growth



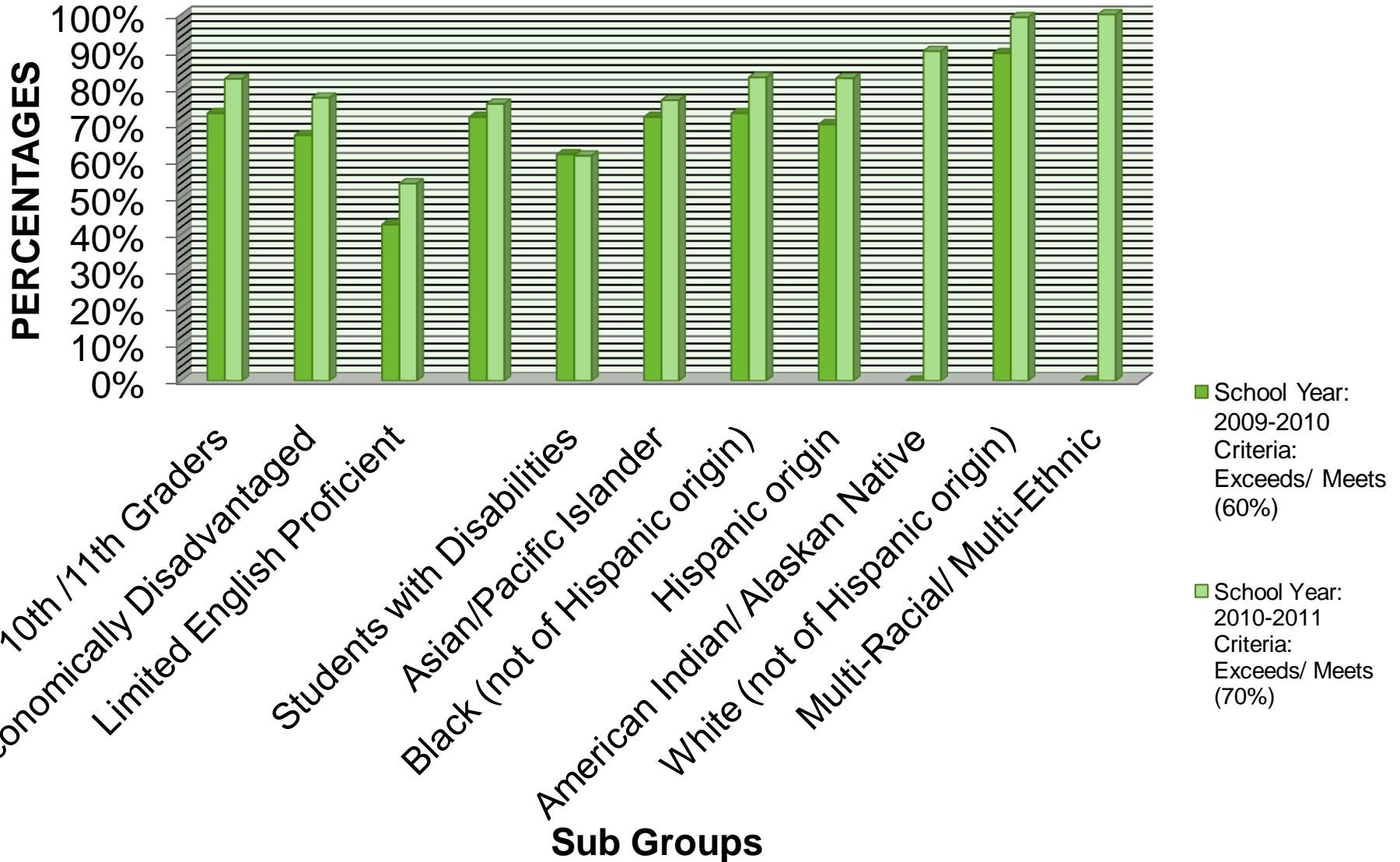
Reading 2010-2011 Growth



Reading



Parkrose
High School



Data Organizer

School: Parkrose High School

Content Area: **READING**

Assessment Data: Oaks

Sub-skill Topics: Academic Status

Date Form Completed: Preliminary Data as of 6/8/2011

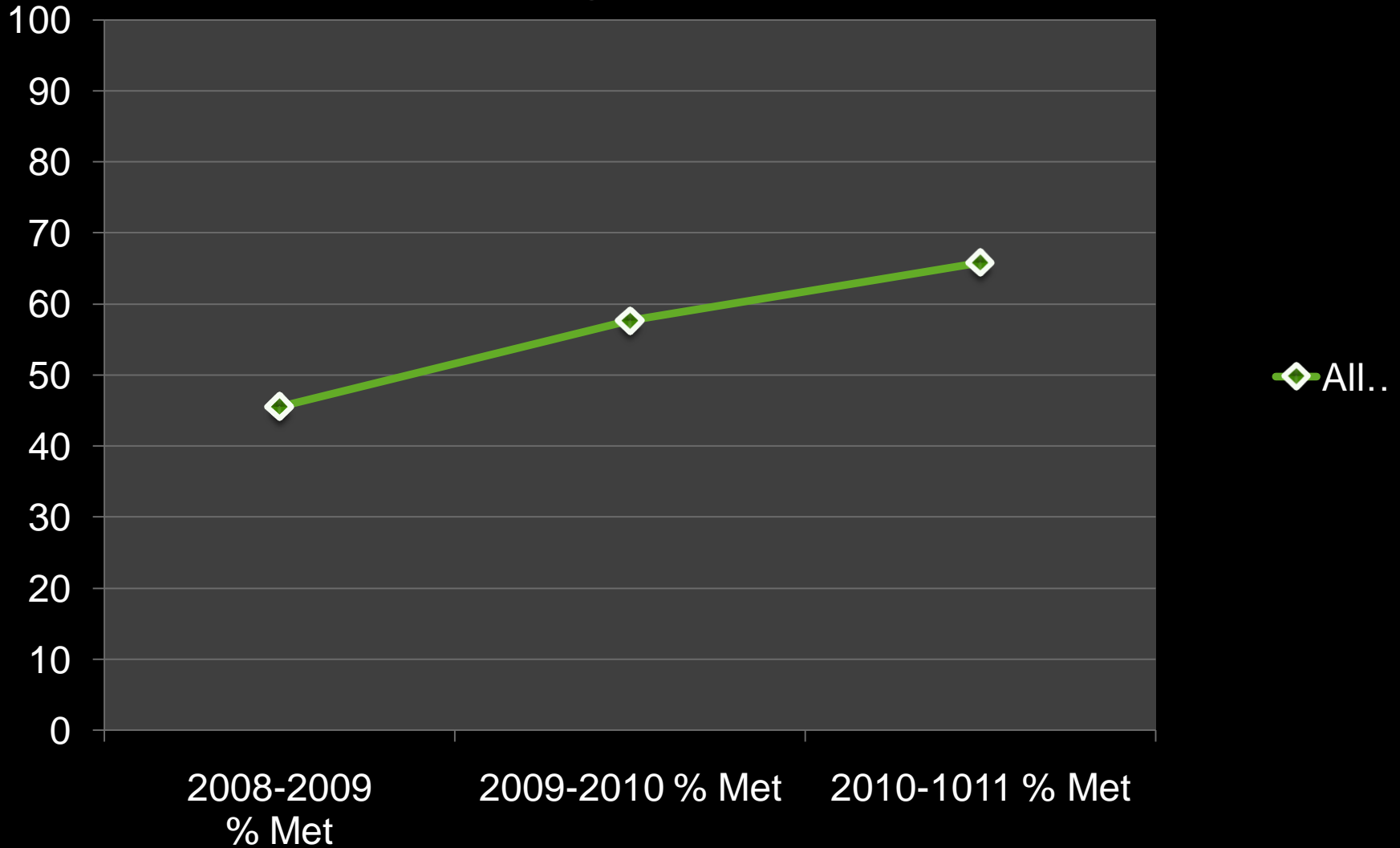
Adjusted Status	School Year:	School Year:	School Year:	School Year:	School Year:
	2006-2007	2007-2008	2008-2009	2009-2010	2010-2011
	Criteria:	Criteria:	Criteria:	Criteria:	Criteria:
	Exceeds/ Meets (50%)	Exceeds/ Meets (60%)	Exceeds/ Meets (60%)	Exceeds/ Meets (60%)	Exceeds/ Meets (70%)
10 th /11th Graders	56.15%	66.57%	66.92%	73%	82.42%
Economically Disadvantaged	45.86%	60.31%	59.83%	67%	77.24%
Limited English Proficient	36.16%	44.15%	38.70%	42.62% (Did not meet Target Growth)	53.82% Met Growth Target
Students with Disabilities	37.61%	49.59%	48.51%	61.76%	61.40%
Asian/Pacific Islander	67.90%	81.45%	76.14%	72%	76.57%
Black (not of Hispanic origin)	47.53%	61.51%	68.12%	73%	82.82%
Hispanic origin	*	55.30%	52.08%	70%	82.59%
American Indian/ Alaskan Native	*	*	*	*	89.97%
White (not of Hispanic origin)	67.39%	77.23%	80.09%	89.40%	99.21%
Multi-Racial/ Multi-	*	*	*	*	



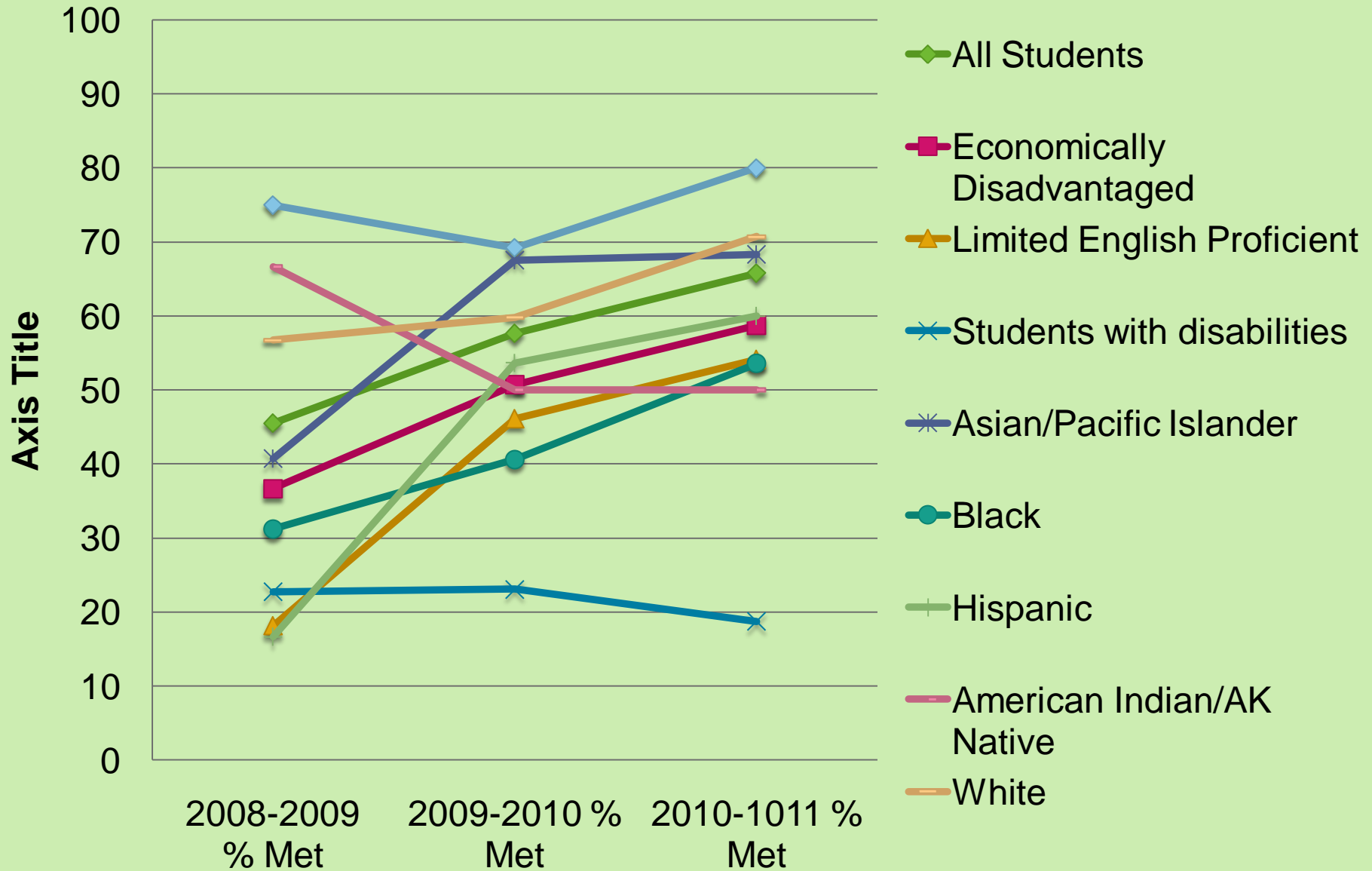
MATH - PARTICIPATION

MATH	2007-2008	2008-2009	2009-2010	2010-2011
All Students	MET	MET	MET	MET
Economically Disadvantaged	MET		MET	MET
Limited English Proficient	MET	MET	MET	MET
Students with Disabilities	MET	MET	MET	MET
Asian/Pacific Islander	MET	MET	MET	MET
Black	MET	MET	MET	MET
Hispanic	MET	MET	MET	MET
American Indian/Alaskan Native	MET	MET	MET	MET
White	MET	MET	MET	MET
Multi-Racial/Multi-Ethnic	MET	MET	MET	MET

Math 2010-2011 All Students Growth

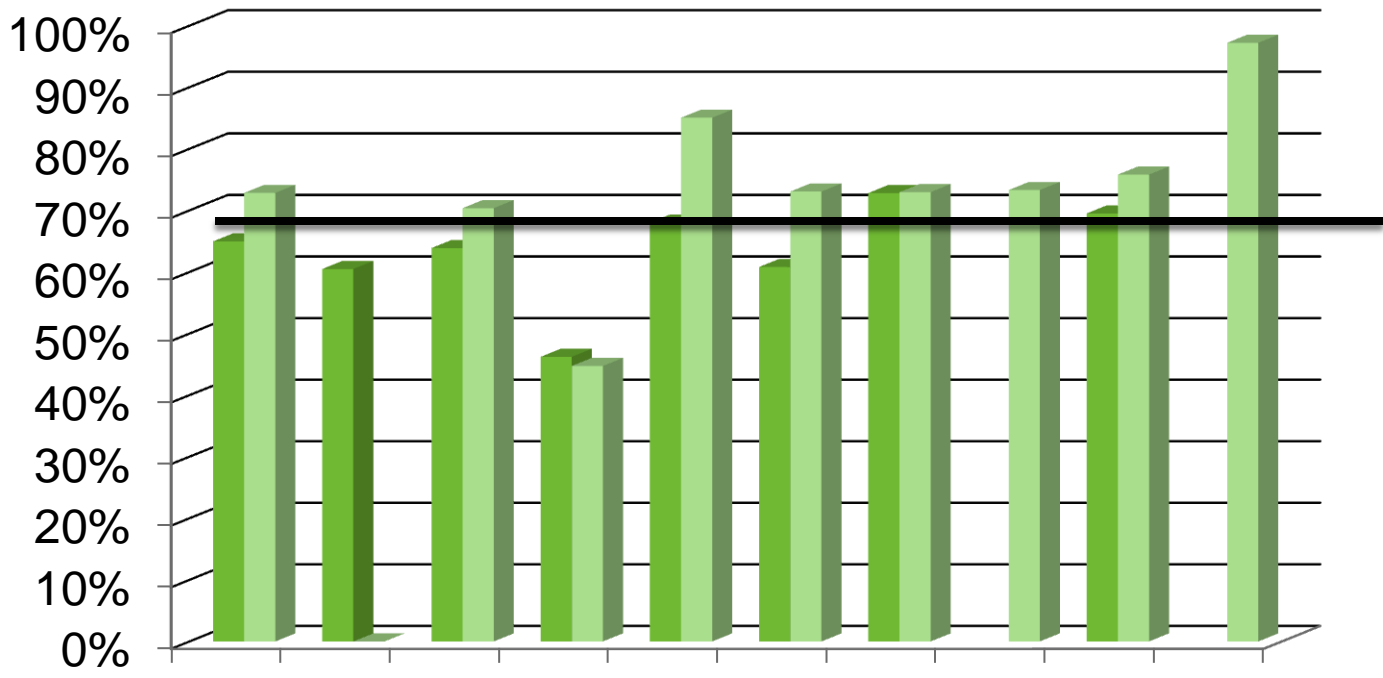


Math 2010-2011 Growth





Math



10th /11th Graders
 Economically Disadvantaged
 Limited English Proficient
 Students with Disabilities
 Asian/Pacific Islander
 Black (not of Hispanic origin)
 American Indian/ Alaskan origin
 White (not of Hispanic origin)
 Multi-Racial/ Multi-Ethnic

■ School Year: 2009-2010
 Criteria: Exceeds/Meets (59%)

Data Organizer

School: Parkrose High School

Content Area: **Math**

Assessment Data: Oaks

Sub-skill Topics: Academic Status

Date Form Completed: Preliminary Data as of 6/8/2011

Adjusted Status	School Year:	School Year:	School Year:	School Year:	School Year:
	2006-2007	2007-2008	2008-2009	2009-2010	2010-2011
	Criteria:	Criteria:	Criteria:	Criteria:	Criteria:
	Exceeds/ Meets (49%)	Exceeds/ Meets (59%)	Exceeds/ Meets (59%)	Exceeds/ Meets (59%)	Exceeds/ Meets (70%)
10 th /11 th Graders	47.05%	54.92%	51.80%	64.96%	72.84%
Economically Disadvantaged	38.83%	42.24%	42.36%	60.48%	63.86%(Did Meet Academic Growth)
Limited English Proficient	45.05%	47.51%	41.47%	63.88%	70.36%
Students with Disabilities	39.09%	39.97%	39.62%	46.22% (Did not meet Safe harbor)	44.73% (Did not meet Academic Growth)
Asian/Pacific Islander	70.72%	77.25%	66.14%	68%	85%
Black (not of Hispanic origin)	42.04%	51.15%	49.17%	60.80%	73.06%
Hispanic origin	49.84%	49.45%	40.49%	72.82%	72.97%
American Indian/ Alaskan Native	*	*	*		73.30%
White (not of Hispanic origin)	53.27%	62.15%	61.54%	69.50%	75.82%
Multi-Racial/ Multi-Ethnic	*	*	*		97.21%

Data Organizer

School: Parkrose High School

Content Area: Cohort Graduation Rate

Assessment Data: AYP Graduation Cohort

	School Year: 2005-2009 Criteria: Exceeds/ Meets (65%)	School Year: 2006-2010 Criteria: Exceeds/ Meets (65%)	School Year: 2007-2011 Criteria: Exceeds/ Meets (__%)	School Year: 2008-2012 Criteria: Exceeds/ Meets (__%)
All Students	58%	57.93%		
Economically Disadvantaged	49%	53.97%		
Limited English Proficient	43%	34.78%		
Asian	60%	74.07%		
White	65.4%	58.99%		



Action Plan for 2010-2011

● Reading

- Reading Coach
- Professional Development for the following:
 - Focused staff: Reading Strategies
 - Language Arts Teachers – Reading Work Samples
 - PLC – Data Analysis
- Instruction:
 - AR classes for 9th/10th/ 11th graders
 - Language! for targeted 10th / 11th graders
 - SIOP
 - Summer – Jump Start
- ECBM Web
 - Progress monitoring for SPED

● Math

- Continued Math Lab class for targeted 10th graders
- Professional Development for the following:
 - Targeted training teacher training
 - MESD training
 - Credit by Proficiency
- Student Instruction:
 - Math Lab instruction for 10th graders
 - Alg 1 and Geometry –Credit by Proficiency classes
- ECBM Web
 - Progress monitoring for SPED



Action Plan for 2010-2011

● Writing

- Professional Development
 - Reading Strategies
 - The Writing Process (all staff)
- Student Instruction
 - Writing via Cornell notes

● Graduation Rate

- 9TH Graders:
 - 9th Grade Academy
 - Stampede
 - Jump Start (ELL)
 - 9th Grade Academy PLC for our teachers
- All other grades
 - Summer School
 - Credit Recovery through out the school year



Action Plan for 2010-2011

● Writing

- Professional Development
 - Reading Strategies
 - The Writing Process (all staff)
- Student Instruction
 - Writing via Cornell notes

● Graduation Rate

- 9TH Graders:
 - 9th Grade Academy
 - Stampede
 - Jump Start (ELL)
 - 9th Grade Academy PLC for our teachers
- All other grades
 - Summer School
 - Credit Recovery through out the school year