



Duluth Head Start



**Serving preschool children and their families
in Duluth since 1964.**

Duluth Head Start Mission



- The mission of Duluth Head Start is to serve income eligible preschool children and their families. These services include opportunities to enhance social and cognitive skills, increase health and wellness and build upon family strengths.

Duluth Head Start Locations

- Barnes Early Childhood Center
- Nettleton Elementary School
- Lincoln Park Elementary School
- Laura MacArthur Elementary School
- Stowe Elementary School
- Spirit Valley YWCA Childcare Center
- Washington Center

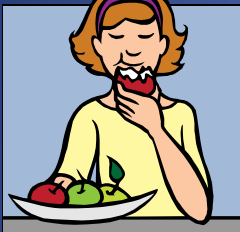


Funding Sources

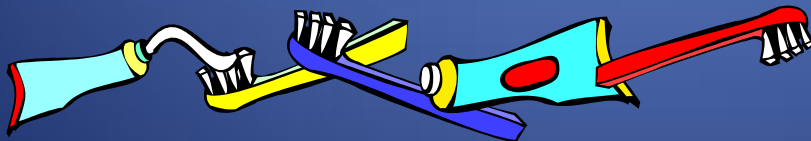


- Federal grants fund our classrooms throughout the city serving 3 and 4 year olds.
- State grants fund our collaboration with the YWCA Childcare Center and Families in Transition serving families experiencing homelessness.

Comprehensive Services



- Health
- Nutrition
- Education
- Mental Health
- Disabilities
- Family Advocacy
- Parent Involvement



Eligibility

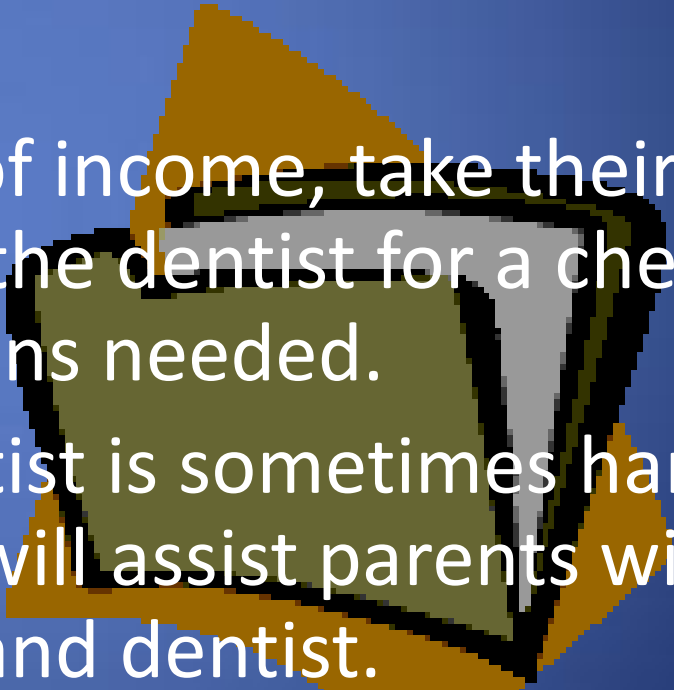
Head Start eligibility is based on the Federal Poverty Guidelines, 2011.

Family size and income limit.

- 1 \$10,890
- 2 14,710
- 3 18,530
- 4 22,350
- 5 26,170
- 6 29,990
- 7 33,810
- 8 37,630

- For families with more than 8 persons, add \$3,820 for each additional person.

Enrollment Requirements

- Families interested in Head Start complete enrollment paperwork with a Head Start staff person.
 - Families provide proof of income, take their child to the doctor and the dentist for a check-up and any immunizations needed.
 - Finding a doctor or dentist is sometimes hard to do. Head Start staff will assist parents with finding a family doctor and dentist.
- 

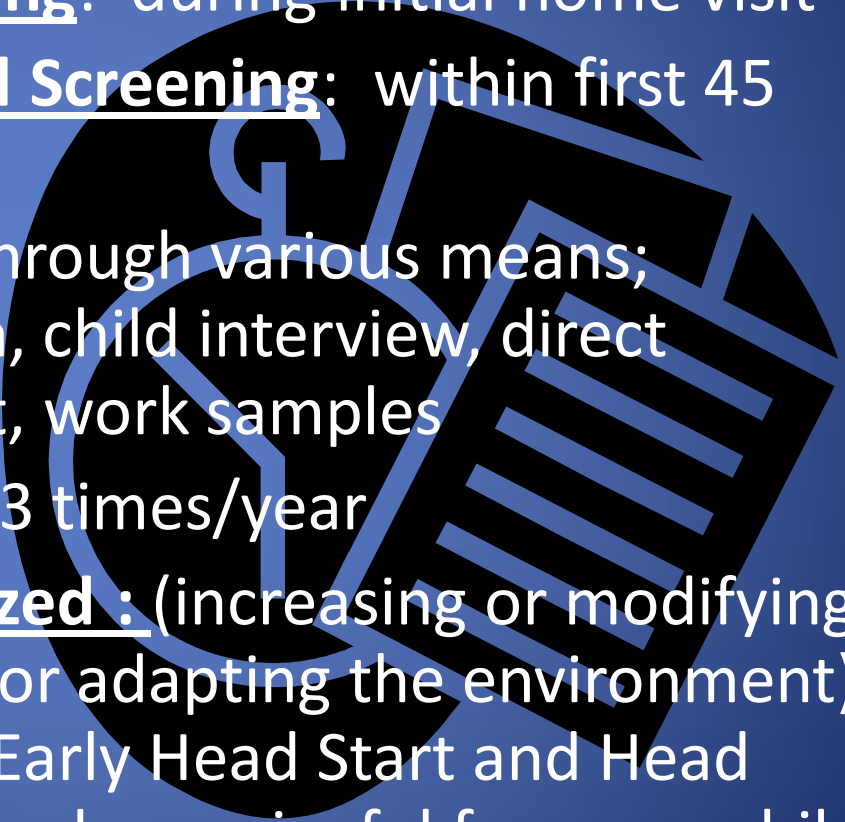


Curriculum

- Opening the World of Learning-A literacy rich curriculum used in all Head Start classrooms.
- Second Step-Supports social-emotional growth by helping children identify and manage feelings, learn to be with others and solve problems.
- Strategies from SEEDS of Early Literacy and Action Based Learning (connecting, brain, movement & learning) are embedded into the day.



Screening & Assessment

- Social Emotional Screening: during initial home visit
 - Health & Developmental Screening: within first 45 days of enrollment
 - On-going assessment : through various means; documented observation, child interview, direct assessment, parent input, work samples
 - Outcomes: are reported 3 times/year
 - Curriculum is individualized : (increasing or modifying the degree of challenge, or adapting the environment) accordingly to make the Early Head Start and Head Start programs relevant and meaningful for every child.
- 

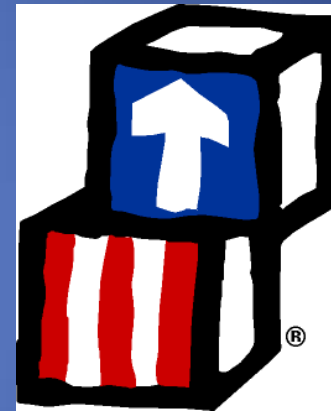
Parent Involvement

- Home Visits
- Conferences
- Policy Council
- Parent/Family Events
- Community Involvement
- Ensuring regular attendance
- Supporting healthy child development



For more information:

- Duluth Head Start
2102 N. Blackman Ave.
Duluth, MN 55811
Phone: 218-336-8815
Fax: 218-336-8819



- Online @ <http://www.duluth.k12.mn.us>