



ARKANSAS
ARTS ACADEMY

Aspire. Achieve. Advance.

August 8, 2016

Ms. Alexandra Boyd, Program Coordinator
Charter and Home Schools Office
Arkansas Department of Education
Four Capitol Mall
Little Rock, AR 72201

Re: Arkansas Arts Academy
Dear Ms. Boyd:

Pursuant to Section 4.02.4 of the ADE Rules Governing Public Charter Schools, I have enclosed a completed Charter Amendment form for the purpose of requesting the following changes:

1. Increase the enrollment cap from 825 to the proposed cap of 1225.
2. Be granted the waiver Ark. Code Ann. 6-15-214: Advanced placement course counted as core curriculum course taught
3. Be granted the waiver Ark. Code Ann. 6-10-106: School year dates

I am requesting that this amendment request be placed on the October 19-20, 2016 agenda of the Charter Authorizing Panel for Consideration.

Thank you for your assistance in this matter.

Sincerely,

Mary Ley

CEO

Arkansas Arts Academy



ARKANSAS
DEPARTMENT
OF EDUCATION

CHARTER AMENDMENT REQUEST FORM

Charter Name: Arkansas Arts Academy

LEA Number: 0440700 Phone Number: 479-366-2787 Submission Date: 08/26/2016

Charter Leader: Mary Ley

Email Address: mley@artsk12.org

Type of Amendment Requested:

Increase enrollment cap

Current cap 825

Proposed cap 1225

Waiver

Waiver Topic: _____

Statute/Standard/Rule to be Waived

Arkansas Code Annotated

- Ark. Code Ann. 6-15-902(a) Advanced placement course counted as core curriculum taught
- Ark. Code Ann. 6-10-106 School year dates

Rationale for Waiver

Ark. Code Ann. 6-15-902(a) We want to encourage students to take higher level courses in the subject's area and assist students to be college ready.

Ark. Code Ann. 6-10-106 School year dates We want to have the flexibility to consider offering a year around school schedule.

Waiver Topic: _____

Statute/Standard/Rule to be Waived

Rationale for Waiver



ARKANSAS
ARTS ACADEMY

September 14, 2016

Ms. Deborah Coffman
Chair, Charter Authorizing Panel
Arkansas Department of Education
Four Capitol Mall
Little Rock, AR 72201

Dear Members of the Charter Authorizing Panel:

Arkansas Arts Academy is requesting an amendment to our existing charter to accommodate our growing demand and our plans for the future. The request is structured in two parts. The first part of the request seeks an expansion to our enrollment cap, and the second part seeks to add the two waivers listed herein.

Arkansas Arts Academy is seeking an increased enrollment cap to serve an additional 400 students, enrolling 150 students during each of the first two years within a three-year period beginning in the fall of 2017. In the last of the three years, Arkansas Arts will enroll an additional 100 students, thereby reaching its 400 student increase.

The second part of the amendment request, which seeks to add the two waivers listed herein to our existing list of waivers, will enable Arkansas Arts Academy to count our Advanced Placement Courses as part of our core curriculum and will allow Arkansas Arts Academy the flexibility in its school calendar to offer an extended year.

At its roots, educational programming at Arkansas Arts Academy is comprised of four major pillars:

1. **Academics** – Arkansas Arts Academy provides an academically rigorous, innovative curriculum within a personalized learning environment that results in all students being college and career ready. The high school has recently added more AP courses and more sophisticated arts programming to its core content, including a highly rated art history course and a career animation course taught by an Academy Award winning animator for his work on Disney's production of Frozen and other Disney and Sony films and projects.
2. **Mastering the Arts** – Our curriculum features vertical alignment of the arts programs beginning at the elementary level and integrating each of the arts areas so that as students transition, they select an area of focus for college and career readiness.



ARKANSAS ARTS ACADEMY

3. **Arts Integration** – We have a full time arts integration specialist who serves as the educational liaison with the Academy’s community partnerships. The arts integration specialist works with educators to leverage community institutions and their collections as extensions of the classroom and to assist with curriculum development in order to meet state and national standards.
4. **Museum Initiative** – Arkansas Arts Academy has partnered with the Crystal Bridges Museum of American Art and eight additional regional museums to incorporate the collections and educational missions into the school curriculum. Museum programs and projects correlate with classroom themes, topics, historical eras, and disciplines, and they serve to expose students to the many professions within the museum field.

The mission of Arkansas Arts Academy is to be the ultimate K-12 choice for excellence in arts and academics. Our school provides a rich, rigorous scholastic study combined with the mastery of an art form, and our students have been recognized repeatedly for their accomplishments. In addition to being named a Reward School by the Arkansas Department of Education for each of the past three years, Arkansas Arts Academy was recently ranked among the top ten schools in Arkansas by *U.S. News & World Report* and was a top five school according to *Niche*. This year, Arkansas Arts Academy also received Exemplary School Designation by the *Arts School Network* in recognition of outstanding efforts in strategically evaluating the school’s purpose, operations, plans, and educational programs.

However, while we are proud of our accomplishments to date, we know we must continue to improve in order to achieve our ultimate goal: to be a nationally recognized arts academy featuring all of the necessary programming for our students to be accepted at the top arts colleges across America. Our relentless pursuit of this goal is what compels this amendment request. In order to meet our goal of becoming a nationally recognized public arts academy, our arts-focused student population must increase, and our current facilities must be remodeled. Increasing our student population and remodeling our facilities will enable us to offer all of the programming options expected of first-rate K-12 art institutions.

Specifically, with an approval of this request, Arkansas Arts Academy will have the ability to offer additional classes and specialized courses that will better prepare our students for college and careers. Examples of such improvements include:

- Dance – expand ballet and offer classes that investigate cultural dance
- Music – strengthen the traditional programs and offer recording courses
- Visual Art – expand to include a ceramics program, photography and film
- Theater – offer more productions as well as staging and costuming classes
- Culinary Arts – explore the possibilities of this field; make connections with community partners as well as combine with existing disciplines, example Dinner Theater
- Animation – continue to expand classes and offer certification courses



ARKANSAS ARTS ACADEMY

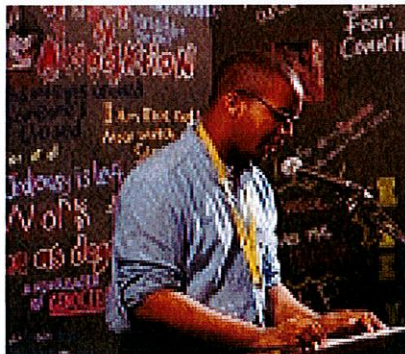
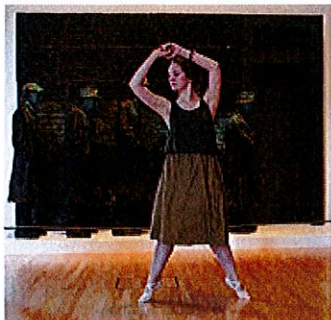
In addition to our motivation for this request from a curricular standpoint, there are many other reasons compelling an increased enrollment cap at Arkansas Arts Academy. One such reason is demand. As a result of our exceptional K-8 administrator, Matt Young, our elementary and middle schools have reached capacity with a waiting list for each grade. Under his leadership, the K-8 campus has become a popular and sought-after school. We have reached our limit in student acceptance and continue to attract attention through our arts integration and strong community partnerships. In order to meet our growing demand and better serve the needs of families in our region who desire a choice for their children's education, we must increase our enrollment cap and remodel our facilities.

Another reason compelling this request is Arkansas Arts Academy's interest in diversifying our student body. We are proud of how we have been able to serve students from all socioeconomic, racial, ethnic, and religious backgrounds in an inclusive environment, but Arkansas Arts Academy intends to leverage this amendment request to further enhance our ability to attract students from historically underprivileged communities. We are steadfast in our commitment to bringing a world-class academic and arts experience to the underserved, and accordingly, we have developed a targeted recruitment plan with multilingual marketing materials aimed at specific zip codes around our community.

We thank you for your careful consideration of this request, and we look forward to sharing this vision with you.

Respectfully,

Mary Ley
CEO
Arkansas Arts



**Arkansas Arts Academy
Projected Cash Flow**

	Historical 2014-15	Current Year 2015-16	Projected 2016-17	Projected 2017-18	Projected 2018-19	Projected 2019-20	Projected 2020-21
Student Cap			825	825	950	1,075	1,225
3rd qtr ADM (Conservative approach)	757.63	766.21	800	810	935	1,050	1,100
Per Pupil Funding	\$ 6,521	6,584	6,646	6,712	6,780	6,847	6,916

Revenue

State Aid	\$ 5,087,684	\$ 4,988,236	5,092,298	\$ 5,316,800	\$ 5,437,093	\$ 6,338,912	\$ 7,189,749
Student Growth/DEF	-	74,300	224,568	67,125	847,448	787,449	345,793
State Grants							
School Recognition Grants	20,820	11,500	-	-	-	-	-
Professional Development	20,808	19,736	19,960	20,840	21,101	24,357	27,353
English Language Learners	9,193	8,748	8,100	8,100	8,100	8,100	8,100
NSLA	137,005	143,550	111,500	111,500	111,500	111,500	111,500
Pathwise	-	14,622	-	-	-	-	-
Special Education	1,200	8,672	8,700	8,700	8,700	8,700	8,700
Vocational Start Up Grant	-	-	-	-	-	-	-
Facilities Funding (state)	71,862	391,755	350,000	-	-	-	-
Miscellaneous Income	23,335	18,729	-	-	-	-	-
Private Grants	810,361	204,550	300,000	250,000	100,000	100,000	100,000
Total Projected Revenue	\$ 6,182,268	\$ 5,884,398	6,115,126	\$ 5,783,065	\$ 6,533,941	\$ 7,379,017	\$ 7,791,195

Expenditures

Salaries and Benefits	3,636,557	3,640,088	3,591,880	3,703,080	3,875,420	4,285,850	4,843,115
Instructional Services/Substitutes	115,031	88,348	85,000	87,000	95,000	100,000	107,000
Data Processing	13,400	-	13,500	14,175	14,884	15,628	16,409
Professional Development	2,207	89	52,000	34,100	5,000	7,500	8,500
Accounting and Legal	20,687	26,786	30,000	31,500	33,075	34,729	36,465
Other Professional Services	18,230	14,183	12,000	12,600	13,230	13,892	14,586
Other Purchase Service	14,000	4,862	7,500	7,875	8,269	8,682	9,116
Water & Sewer	13,015	11,973	12,500	13,750	15,125	15,881	16,675
Sanitation	6,016	7,979	8,000	8,800	9,680	10,164	10,672
Cleaning Services	181,219	210,950	220,000	220,000	241,500	253,575	266,254
Lawn Care	10,351	9,793	10,000	10,500	11,025	11,576	12,155
Rental (Principal & Interest Pmts)	605,215	597,430	600,000	650,000	1,200,000	1,400,000	1,400,000
Property & Liability Insurance	69,306	69,306	60,000	60,000	80,000	100,000	100,000
Telephone	46,014	46,014	60,000	60,000	63,000	66,150	69,458
Postage	2,784	4,252	6,000	6,000	4,500	4,500	4,500
Advertising	2,577	3,752	5,000	5,000	5,000	5,000	5,000
Printing & Binding	16,899	34,442	35,000	35,000	38,500	42,350	46,585
Travel/Meals/Lodging (includes bus costs)	45,096	31,969	50,000	50,000	55,000	60,500	66,550
General Supplies & Materials	280,058	307,511	300,000	330,000	363,000	399,300	389,230
Natural Gas	32,859	19,552	25,000	26,250	27,563	28,941	30,388
Electricity	77,606	76,387	79,000	82,950	87,098	91,452	96,025
Textbooks/Curriculum Materials	-	22,974	100,000	75,000	50,000	55,000	60,500
Library Books & Periodicals	-	9,370	5,000	8,000	8,000	8,000	8,000
Software	64	31,135	20,000	20,000	22,000	24,200	26,620
Bldg & Land Improvement	137,089	245,212	100,000	-	-	-	-
Repairs & Maintenance	9,629	72,645	150,000	100,000	100,000	100,000	10,000
Vehicles	36,759	10,215	-	-	-	-	-
Furniture	-	-	-	-	15,000	15,000	15,000
Technology Hardware/Software	413,087	3,147	50,000	50,000	55,000	60,500	66,550
Dues & Fees	4,695	19,610	25,000	25,000	25,000	25,000	25,000
Misc Expenditures	12,546	371	15,000	15,000	15,000	15,000	15,000
Commodities/Food	-	-	-	-	-	-	-
Total Projected Expenditures	5,822,996	5,620,345	5,727,380	5,741,580	6,535,868	7,258,370	7,775,353

Net Cash Increase/Decrease \$ 359,272 \$ 264,053 387,746 \$ 41,485 \$ (1,926) \$ 120,647 \$ 15,841

Legal Balance - Beginning of Year 872,685 1,136,738 1,524,484 1,565,969 1,564,042 1,684,690

Legal Balance - End of Year 1,136,738 1,524,484 1,565,969 1,564,042 1,684,690 1,700,531

NOTE/ Legal Balance includes Facilities Funding (Fund 3)

Arkansas Arts Academy ENROLLMENT REPORT Enrollment Date: Sep 2, 2016

Enrollment Count		01	02	03	04	05	06	07	08	09	10	11	12	KF	Race Totals
Asian	Females			1	1	2	1	1				1	1		8
	Males		1				1								2
	Gender Totals		1	1	1	2	2	1				1	1		10
Black	Females	1	1				1	1	1	2			1		8
	Males						1						3		4
	Gender Totals	1	1				2	1	1	2			4		12
Hawaiian/Pacific Islander	Females				2					1					3
	Gender Totals				2					1					3
	Females	6	6	1	8	4	7	4	3	2	1	4	3	5	54
Hispanic	Males	3	4	4	6	6	4	5	5	4	2	2	4	2	51
	Gender Totals	9	10	5	14	10	11	9	8	6	3	6	7	7	105
	Females	2	2					1		1		1			7
Native American	Males														1
	Gender Totals	2	2						1	1		1		1	8
	Females	1	1	2	2	2	1		3	4	1	1		5	23
Two or More	Males	3	2	2	3	1	2	1	4	2	1	1	1		23
	Gender Totals	4	3	4	5	3	3	1	7	6	2	2	1	5	46
	Females	29	22	20	22	28	31	33	27	33	30	30	28	27	360
White	Males	15	23	28	20	19	18	20	21	11	17	16	14	20	242
	Gender Totals	44	45	48	42	47	49	53	48	44	47	46	42	47	602
	Grade Totals	60	60	60	64	62	67	66	64	60	52	56	55	60	786

Arkansas Arts Academy

Students Receiving Free Meals	153	20%
Students Receiving Reduced Meals	54	7%
Total	207	27%
Students with Grace Free and Reduced Meals	79	10%
Pending Applications		

Desegregation Analysis

Arkansas Arts Academy is located within the boundaries of the Rogers School District (RSD) in Benton County and as an open-enrollment public charter school that is not restricted in its student enrollment by district boundaries, expects to continue to obtain most of its students from within the boundaries of the RSD and the Bentonville School District (BSD).

Arkansas Arts Academy offers this Desegregation Analysis in accordance with the requirements of Ark. Code Ann. §6-23-106 to carefully review the potential impact that the granting of its amendment request would have upon the RSD, BSD and any other school district's ability to comply with court orders and statutory obligations to create and maintain a unitary system of desegregated public schools. Arkansas Arts Academy's amendment request, if granted, would raise its enrollment cap from 825 students to 1,225 students over a three (3)-year period, beginning in the 2017-2018 school year. Because all public school districts in Arkansas from which Arkansas Arts Academy draws students are unitary in student assignment or are otherwise not under any court orders to desegregate, the granting of the requested amendment should have no negative affect on the desegregation efforts of any public school district in this state.

According to the 2015-2016 enrollment figures (the latest enrollment figures available) maintained by the Arkansas Department of Education (ADE) Data Center, the current enrollment of Arkansas Arts Academy is 774 students, which includes 12 Asian, 15 African-American, 108 Hispanic, 39 Two or More Race, 16 Native American and Pacific Islanders, and 584 Caucasian students, and would have no material impact on the racial composition of the public school districts in Benton County. There are 16,060 students enrolled in the Bentonville School District; its student population is approximately 75% Caucasian and approximately 11% Hispanic according to the latest figures maintained by the ADE Data Center. There are 15,077 students enrolled in the Rogers School District, according to the latest figures maintained by the ADE Data Center. The Rogers School District student population is approximately 48% Caucasian and 45% Hispanic. The total enrollment of Arkansas Arts Academy is a little less than 5% of the total enrollment of the Bentonville School District and is approximately 5% of the total enrollment of the Rogers School District. At a maximum student population of 1,225 students, Arkansas Arts Academy's enrollment would be approximately 7.6% of the total enrollment of the Bentonville School District and approximately 8.1% of the total enrollment of the Rogers School District.

Group	Arkansas Arts Academy	Bentonville Public Schools	Rogers Public Schools
2015-2016 Enrollment	774	16,060	15,077
White/Caucasian	75.5%	74.7%	48%
Hispanic	14%	10.7%	45%
Asian	1.6%	6.1%	1.9%
Native American/Pacific Islander	2.1%	1.6%	1.8%
Two or More Races	5.0%	3.8%	1.6%
African American	1.9%	3.1%	1.7%



Mary Ley <mley@artsk12.org>

Sharing new information for Arkansas Arts Academy

1 message

Mary Ley <mley@artsk12.org>

Fri, Aug 26, 2016 at 3:09 PM

To: Mberry@rps.k12.ar.us

August 26, 2016

Dear Superintendent Berry,

I sure enjoyed meeting and visiting with you. Arkansas Arts Academy will be requesting a hearing with the Charter Board in October to request our enrollment cap to be increased from 825 students to 1225. The additional 400 students will be geared for the high school. The outreach for increasing our high school enrollment will be a gradual process. We will begin rebuilding the physical campus in the next few months. Student enrollment will increase with different segments of progress. We hope to have room for 125 more students by the Fall of 2018, another 125 students by the Fall of 2019, and complete the additional students by the Fall of 2020 by adding the last 150.

Our intention is to search for arts students throughout Northwest Arkansas and not put a strain on any one district. We intend to launch a targeted recruitment campaign to enroll more low-income, minority students. The new high school will feature some of the finest studios and labs in the country. We hope we can partner with your district by providing arts students everywhere with evening and summer programming. Thanks to our amazing arts integration specialist and our new museum initiative we would be happy to share our arts integration and museum lessons to anyone who is interested.

I hope you see the benefits of a national level arts institute for the entire community. I would be more than happy to meet with you to discuss this further.

Best regards,

Mary Ley

CEO

Arkansas Arts Academy

479-366-8929 (C)

Mary Ley <mley@artsk12.org>

Aug 26 (6 days ago)

to djones

August 26, 2016

Dear Superintendent Jones,

Arkansas Arts Academy will be requesting a hearing with the Charter Board in October to request our enrollment cap to be increased from 825 students to 1225. The additional 400 students will be geared for the high school. The outreach for increasing our high school enrollment will be a gradual process. We will begin rebuilding the physical campus in the next few months. Student enrollment will increase with different segments of progress. We hope to have room for 125 more students by the Fall of 2018, another 125 students by the Fall of 2019, and complete the additional students by the Fall of 2020 by adding the last 150.

Our intention is to search for arts students throughout Northwest Arkansas and not put a strain on any one district. We intend to launch a targeted recruitment campaign to enroll more low-income, minority students. The new high school will feature some of the finest studios and labs in the country. We hope we can partner with your district by providing arts students everywhere with evening and summer programming. Thanks to our amazing arts integration specialist and our new museum initiative we would be happy to share our arts integration and museum lessons to anyone who is interested.

I hope you see the benefits of a national level arts institute for the entire community. I would be more than happy to meet with you to discuss this further.

Best regards,

Mary Ley
CEO
Arkansas Arts Academy
[479-366-8929](tel:479-366-8929) (C)



Mary Ley <mley@artsk12.org>

News from Arkansas Arts Academy

1 message

Mary Ley <mley@artsk12.org>

Fri, Aug 26, 2016 at 3:11 PM

To: Jrollins@sdale.org

August 26, 2016

Dear Superintendent Rollins,

I sure enjoyed meeting and visiting with you. Arkansas Arts Academy will be requesting a hearing with the Charter Board in October to request our enrollment cap to be increased from 825 students to 1225. The additional 400 students will be geared for the high school. The outreach for increasing our high school enrollment will be a gradual process. We will begin rebuilding the physical campus in the next few months. Student enrollment will increase with different segments of progress. We hope to have room for 125 more students by the Fall of 2018, another 125 students by the Fall of 2019, and complete the additional students by the Fall of 2020 by adding the last 150.

Our intention is to search for arts students throughout Northwest Arkansas and not put a strain on any one district. We intend to launch a targeted recruitment campaign to enroll more low-income, minority students. The new high school will feature some of the finest studios and labs in the country. We hope we can partner with your district by providing arts students everywhere with evening and summer programming. Thanks to our amazing arts integration specialist and our new museum initiative we would be happy to share our arts integration and museum lessons to anyone who is interested.

I hope you see the benefits of a national level arts institute for the entire community. I would be more than happy to meet with you to discuss this further.

Best regards,

Mary Ley

CEO

Arkansas Arts Academy

479-366-8929 (C)



Mary Ley <mley@artsk12.org>

News from Arkansas Arts Academy

1 message

Mary Ley <mley@artsk12.org>

Fri, Aug 26, 2016 at 3:13 PM

To: Superintendent@fayar.net

August 26, 2016

Dear Superintendent Wendt,

I sure enjoyed meeting and visiting with you. Arkansas Arts Academy will be requesting a hearing with the Charter Board in October to request our enrollment cap to be increased from 825 students to 1225. The additional 400 students will be geared for the high school. The outreach for increasing our high school enrollment will be a gradual process. We will begin rebuilding the physical campus in the next few months. Student enrollment will increase with different segments of progress. We hope to have room for 125 more students by the Fall of 2018, another 125 students by the Fall of 2019, and complete the additional students by the Fall of 2020 by adding the last 150.

Our intention is to search for arts students throughout Northwest Arkansas and not put a strain on any one district. We intend to launch a targeted recruitment campaign to enroll more low-income, minority students. The new high school will feature some of the finest studios and labs in the country. We hope we can partner with your district by providing arts students everywhere with evening and summer programming. Thanks to our amazing arts integration specialist and our new museum initiative we would be happy to share our arts integration and museum lessons to anyone who is interested.

I hope you see the benefits of a national level arts institute for the entire community. I would be more than happy to meet with you to discuss this further.

Best regards,

Mary Ley

CEO

Arkansas Arts Academy

479-366-8929 (C)