

Stadium Lighting, Turf and Track Replacement

Field Fees Committee Meeting
7/29/24

Stadium Lighting

7/19/24

- Upon routine inspection, it was discovered that one light pole had a significant piece of outer shell fall off.
- Further inspection revealed that the poles were structurally compromised.
- It was our team's decision, in partnership with the Town Engineer, that the lights would need to come down and the Stadium closed for safety reasons on Friday, July 19th.

Previous Lighting

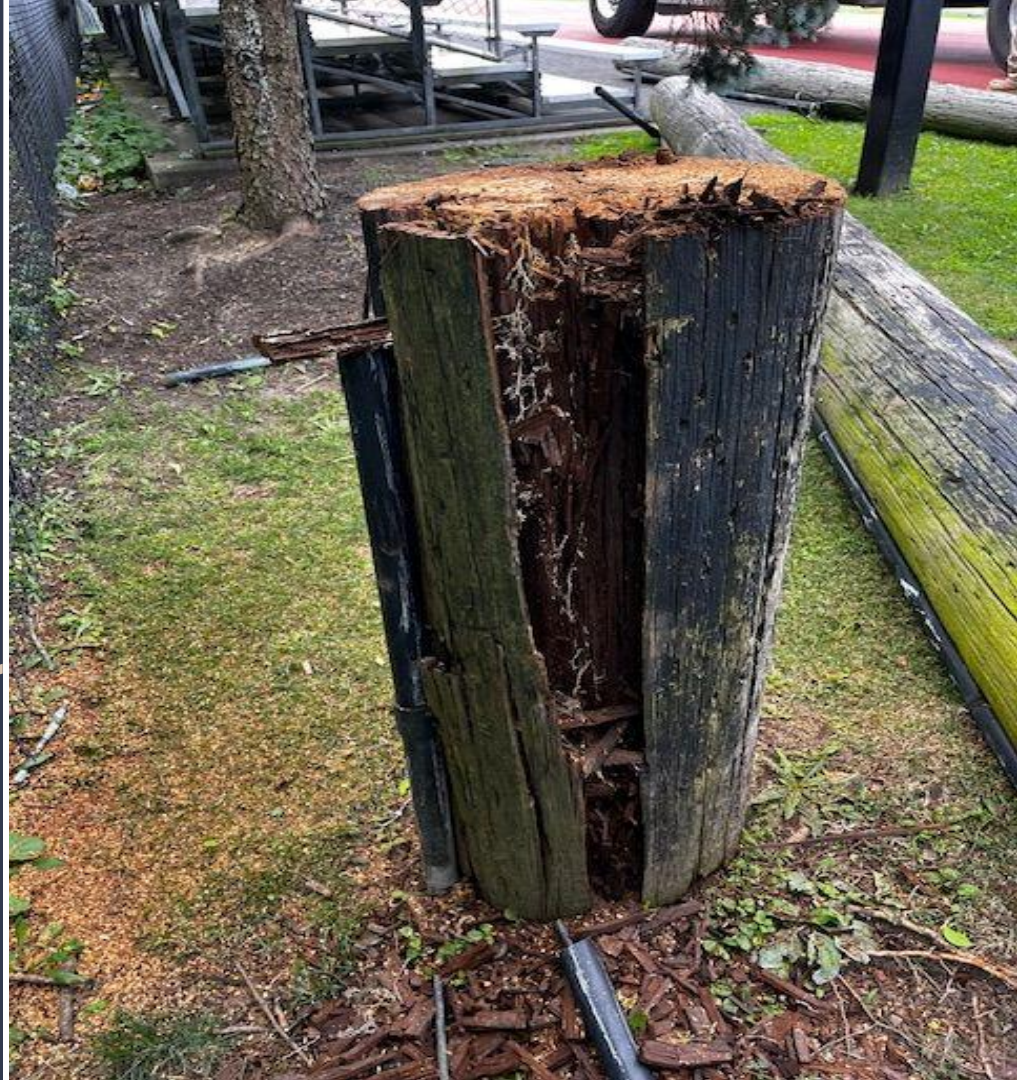
Age: 50 years

Material: Wood

Fixtures: Metal Halide

Light Weight: 1000 lbs

Previous Lighting Structural Condition



Previous Lighting Structural Condition



Previous Lighting Structural Condition



Previous Lighting Structural Condition



Previous Lighting Structural Condition



Previous Lighting Structural Condition



Previous Lighting Structural Condition



IMPACTS

Program	Impact
High School Athletics	<ul style="list-style-type: none"><li data-bbox="799 492 1789 607">● Home football games played on Friday afternoon or Saturday morning<li data-bbox="799 667 1547 727">● Lack of attendance at games<li data-bbox="799 781 1702 896">● Cost of potential facility rental and increased transportation costs

IMPACTS

Program	Impact
Youth Programs	<ul style="list-style-type: none"><li data-bbox="807 463 1854 574">● By October, lack of available field time after high school sports finish practicing<li data-bbox="807 637 1777 805">● High School events moving to the weekend will impact numerous youth games<li data-bbox="807 869 1406 915">● Loss in rental revenue

IMPACTS

Program	Impact
Public Use	<ul style="list-style-type: none"><li data-bbox="799 492 1843 607">● Track hours will be limited due to lack of lighting

Lighting Quotes

- MUSCO
- COOPER

MUSCO

Stadium Field @ 360' x 195'
\$414,637.00 (7/23/24)

Delivery & Installation: 6-8 weeks from time of agreement

Warranty: Product assurance and warranty program that covers materials and onsite labor, eliminating 100% of your maintenance costs for 25 years

Current Relationship: Musco system installed on Marty Morgan Field.
Positive experience with electrical vendor for service.

COOPER

Stadium Field @ 360' x 195'

\$427,000 (5/10/24)

\$300,000.00 (7/26/24)

Delivery: 10-12 Weeks

Warranty: 10-year limited warranty - (\$9,000 add on)

Included Warranty does not cover labor costs associated with wiring, pole installation or existing infrastructure. The cost of lift/crane equipment or scaffolding rental is also excluded.

Cooper Lighting's Warranty obligations are triggered only after experiencing failure of 10% of the Covered Products

Recommended Plan

Stadium	Cost	Vendor
Lighting	\$414,000	Musco
Track & Turf	\$909,800	SprinTurf
Total	\$1,323,800	

Funding Sources

Total Funding Required for Stadium Needs: \$1,323,800

- **BOE Field Fees Account**
 - \$640,000 – Toward Turf & Track
- **Additional Appropriation from BOF**
 - \$683,800 – Balance of Turf & Track and Lights

Funding Commitment

- The BOE made a FY25 Capital request to the BOF in the amount of \$600K to replace the turf and track as part of the recent budget process.
- While the BOF cut \$600,000 from the BOE's capital budget, the BOF committed to using surplus monies to alternatively fund this request.
- We will ask the BOF honor this commitment to enable us to fund the full stadium repairs.

Please note: As part of the BOE's Approved 5-year Capital Plan the lights were scheduled to be replaced in year three.

Recommended Next Steps

- July 29 - Field Fees Committee discusses Stadium Replacement Plan and makes recommendations to the BOE
- July 31 - BOE reviews Field Fees Committee recommendations
- Request additional appropriation for Turf & Track replacement from BOS & BOF
- Pursue all rebate opportunities

Available Funding

A dark blue, solid-colored shape that starts from the bottom-left corner and extends diagonally upwards to the right, covering the bottom portion of the slide.

Fund #211

BALANCE PRELIMINARY
6/30/2023 5/8/2024

ASSETS

A1010/12	Cash	618,913.57	675,189.03
A1150/1	Accounts Receivable	10,472.50	3,690.00
A1300/1	Due from General Fund	0.00	0.00
A1300/204	Due from Adult Ed	10.00	0.00
A1300/205	Due from Park & Rec	17,962.60	22,312.60

ASSETS 647,358.67 701,191.63

LIABILITIES

L2020/1	Accounts Payable	0.00	0.00
L2150/1	Accrued Payroll	0.00	0.00

LIABILITIES 0.00 0.00

FUND BALANCE

Turf Field Reserve	451,415.62	460,195.62
Track/Tennis Court reserve fund	160,000.00	180,000.00
JJP Turf Field fees	17,695.00	17,695.00
MHHS cocurricular activity fees	546.50	546.50
MS cocurricular activity fees	395.00	395.00
HS athletics fees	8,361.41	7,597.41
Use of buildings fees	708.61	14,793.61
HS parking fees / Grounds	346.70	11,993.66
Technology Repair/Replace	7,889.83	7,974.83

FUND BALANCE 647,358.67 701,191.63

Available balance for
track & turf replacement

TOTAL LIABILITIES & FUND BALANCE 647,358.67 701,191.63