



ENROLLMENT PROJECTION 2018-19

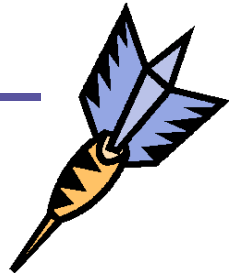
Independent School District 877
Buffalo-Hanover-Montrose

November 27, 2017

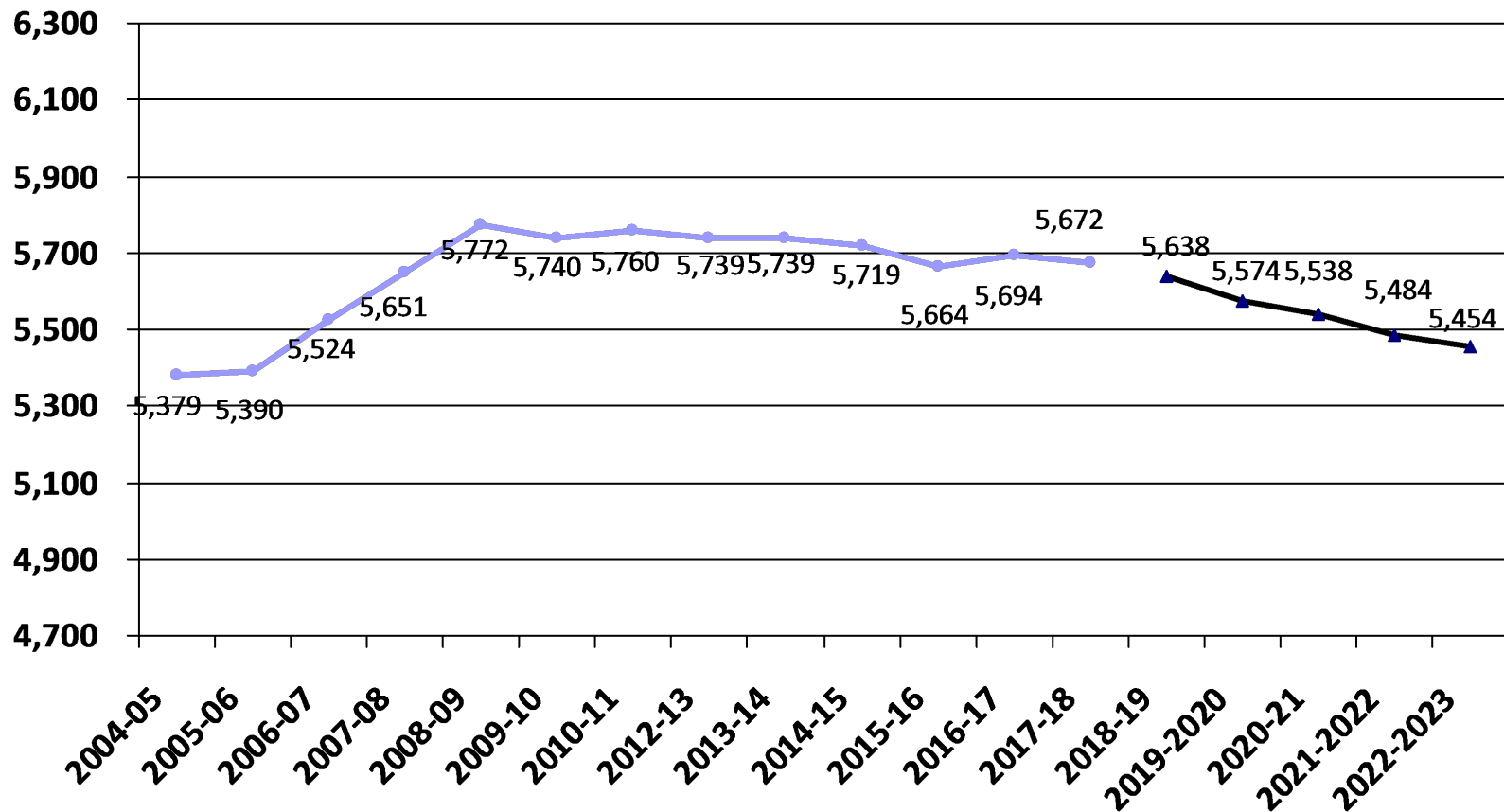


Enrollment Projection Report

- Review of K-12 enrollment as of Oct. 1st
- Resident enrollment
- Open enrollment & tuition
- Nonpublic enrollment
- Fall vs. spring enrollment
- Review 2017-18 enrollment projection
- 2018-19 enrollment projection



Historical and 2018-19 Projected K-12 Enrollment as of Oct. 1st



Review of K-12 Enrollment as of Oct. 1st

- The school district growth trend came to a halt in the 2009-10 school year but we are ahead of the projection for 2017-18.
- The five-year enrollment is a decline and currently averaging -14 students/year.
- Total enrollment decline for the past five years is -70 students or -1.22%.

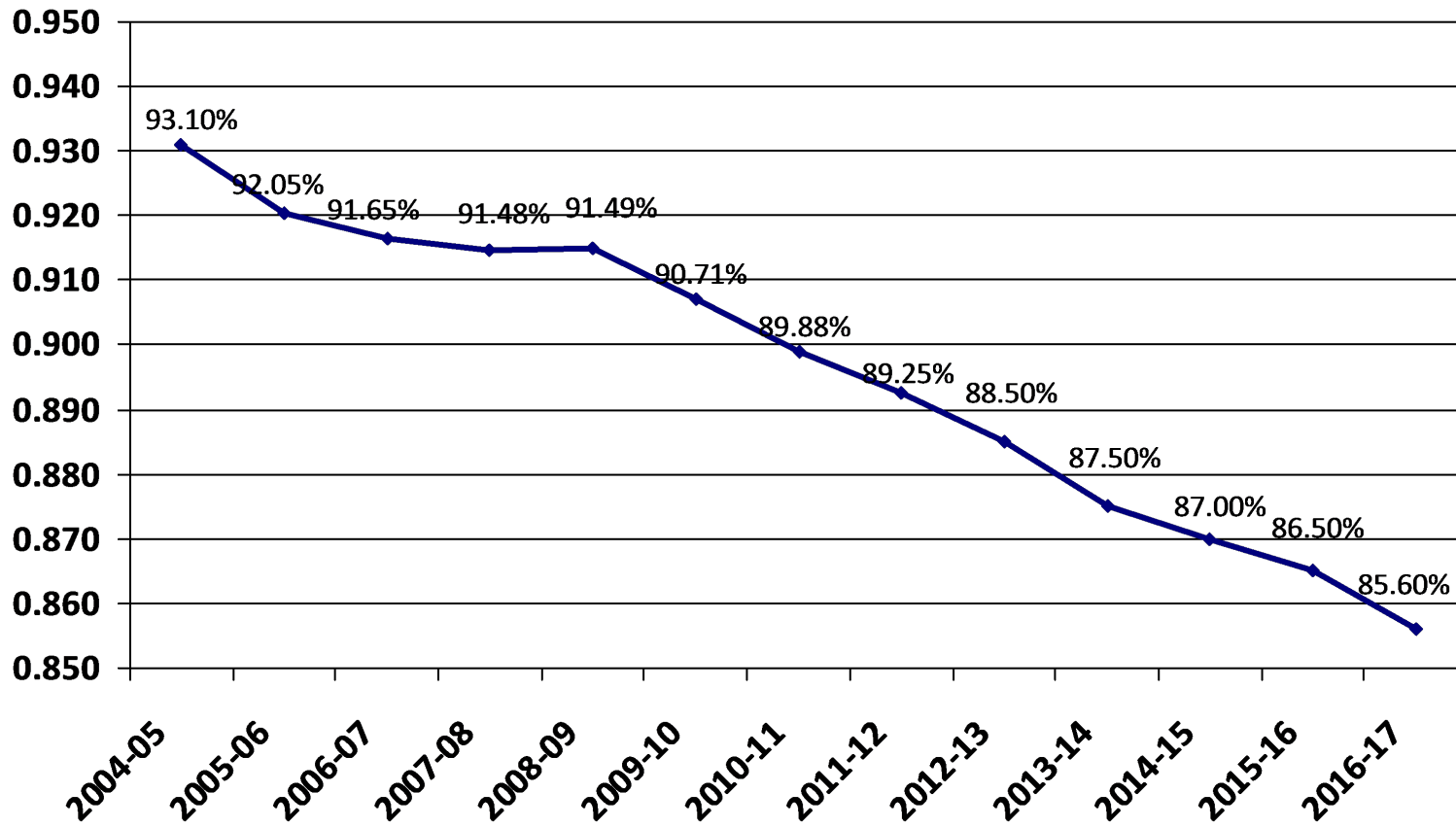
	2013-14	2014-15	2015-16	2016-17	2017-18
K-12 enrollment	5,739	5,719	5,664	5,694	5,672
Change over prior year	-3	-20	-55	30	-22
% change	-.05%	-.35%	-.96%	.53%	-.39%

Total Resident Students Enrolled in ISD 877 as of June 30th

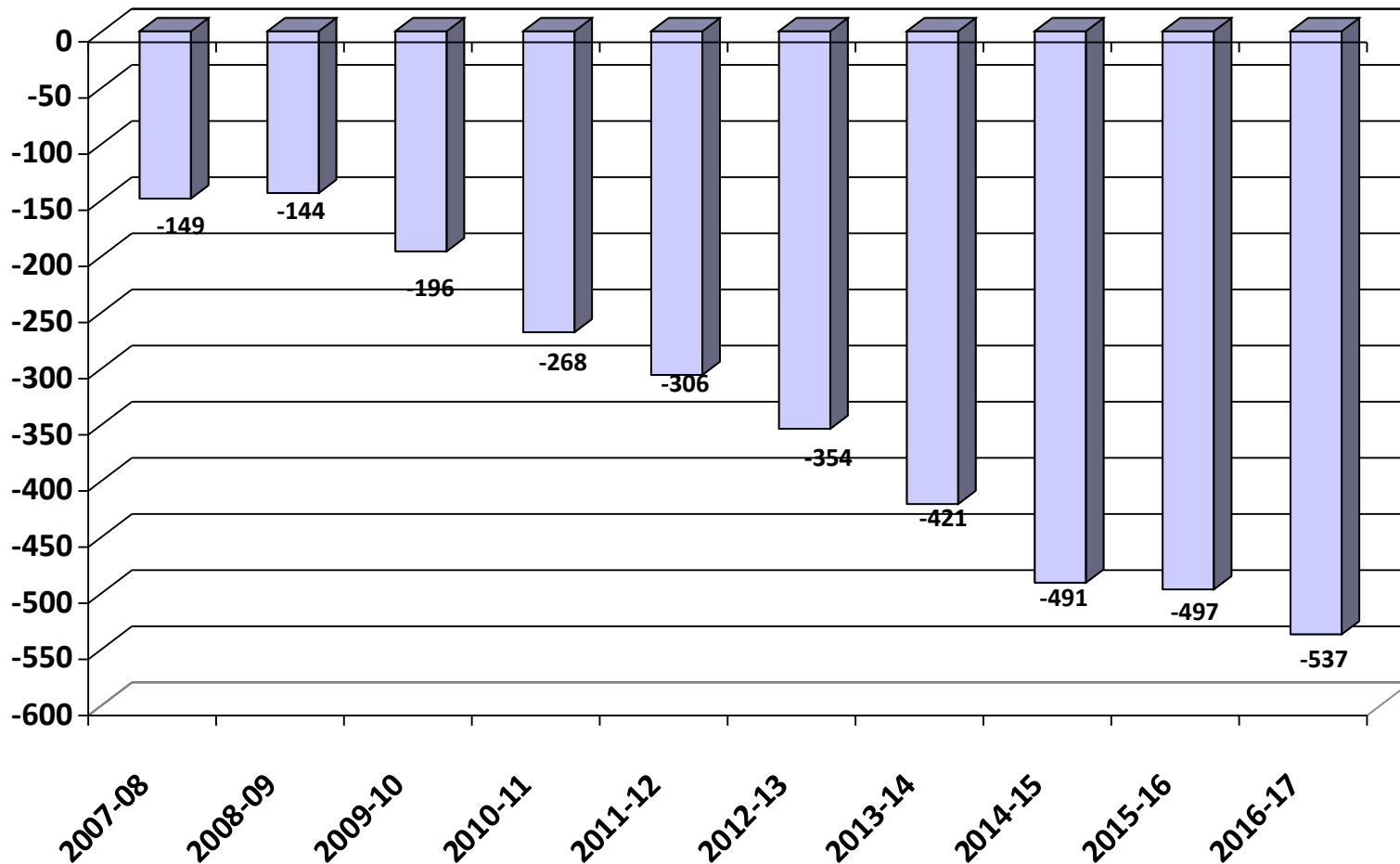
- BHM's resident population and residents served population grew this past year. Residents served was at its highest point in the last five years but still shows a decline in percentage served vs total population.

	2012-13	2013-14	2014-15	2015-16	2016-17
Residents served	5,380	5,367	5,402	5,369	5,348
Residents going elsewhere	701	768	810	837	902
Total Residents	6,081	6,135	6,212	6,206	6,250
Change over prior year	78	54	77	-6	44
% change	1.3%	.89%	1.26%	-.10%	.71%
% Served vs Total Population	88.5%	87.5%	87.0%	86.5%	85.6%

Total Resident Students Enrolled in ISD 877 as of June 30th



Open Enrollment & Tuition Net Gain/Loss as of June 30th



2016-17 Open Enrollment & Tuition Gain/Loss by District as of June 30th

District	In	Out	Net
Rockford	31	-200	-169
Delano	9	-158	-149
Watertown-Mayer	4	-68	-64
St. Michael-Albertville	85	-105	-20
Orono	0	-18	-18
Osseo	12	-29	-17
Elk River	21	-34	-13
Eden Valley-Watkins	2	0	2
Anoka-Hennepin	7	-1	6
Annandale	17	-8	9
Big Lake	10	-1	9
Howard Lake-Waverly-Winsted	50	-40	10
Maple Lake	56	-41	15
Monticello	51	-13	38

Other

Targeted Services, Tuition, and Online

WTC -29

MAWSECO -10

SW Metro -17

MN Transitions -24

Houston (online) -16

Jane Goodall -17

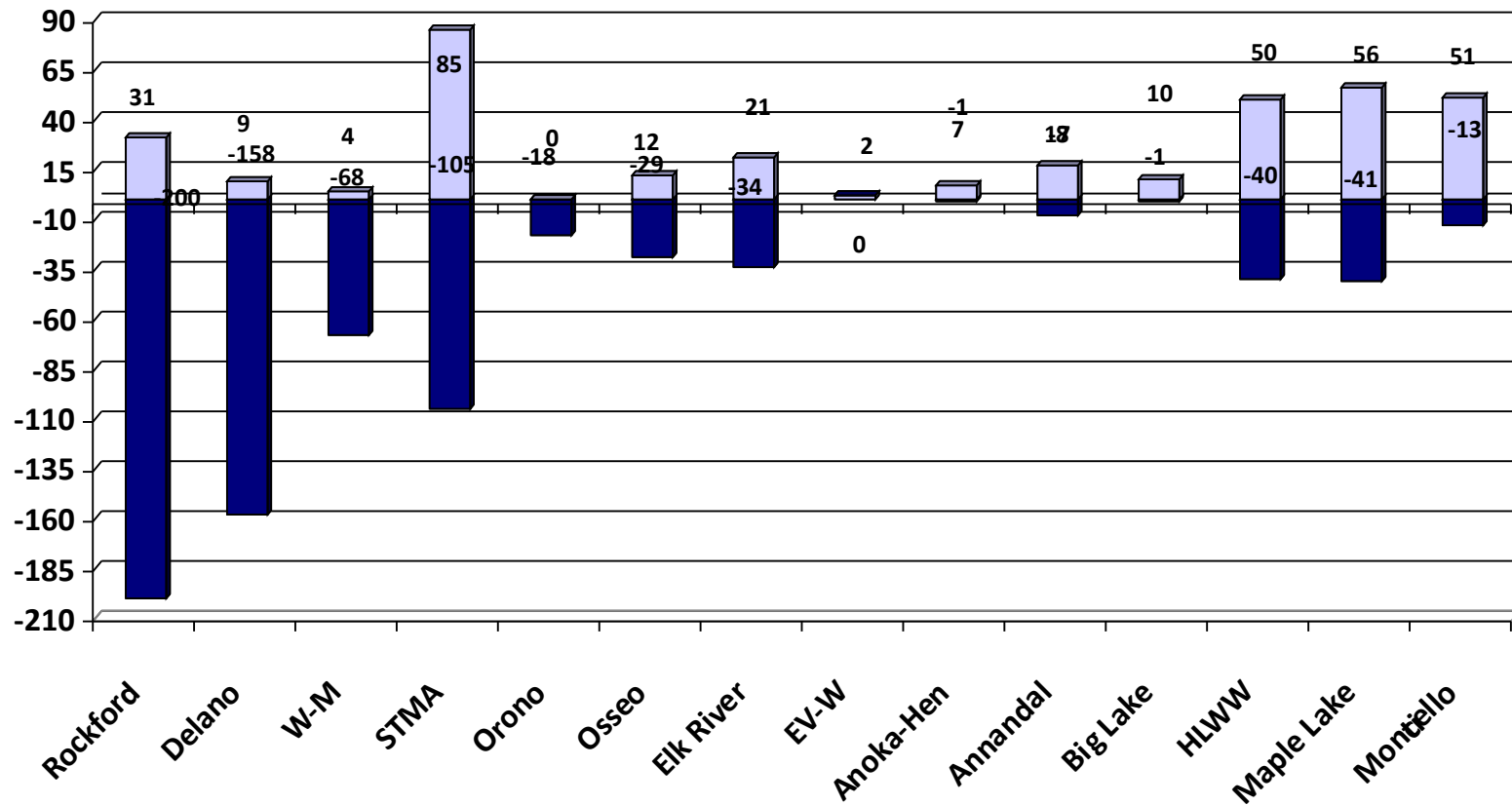
Beacon Academy -12

Parnassus Prep -7

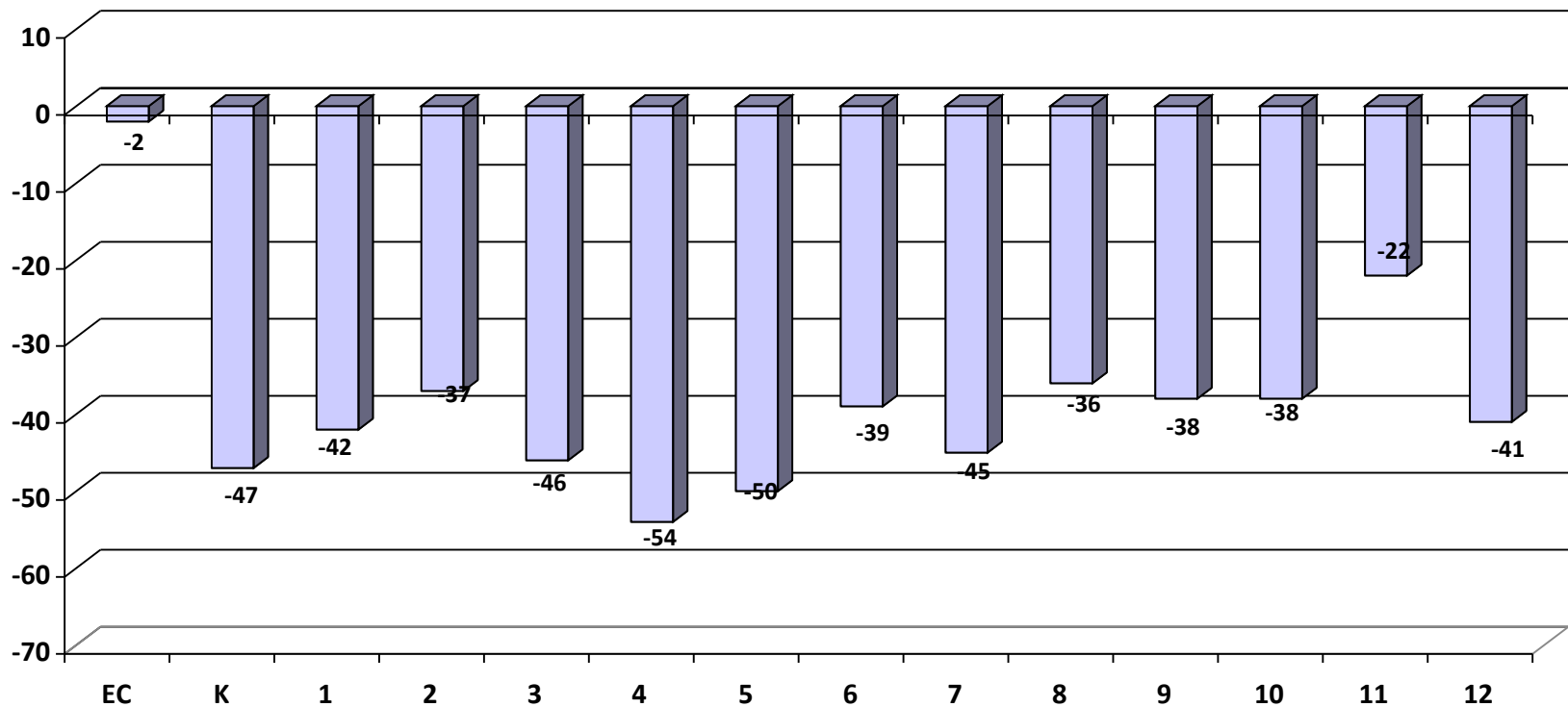
Spectrum Charter -7

Swan River Charter -6

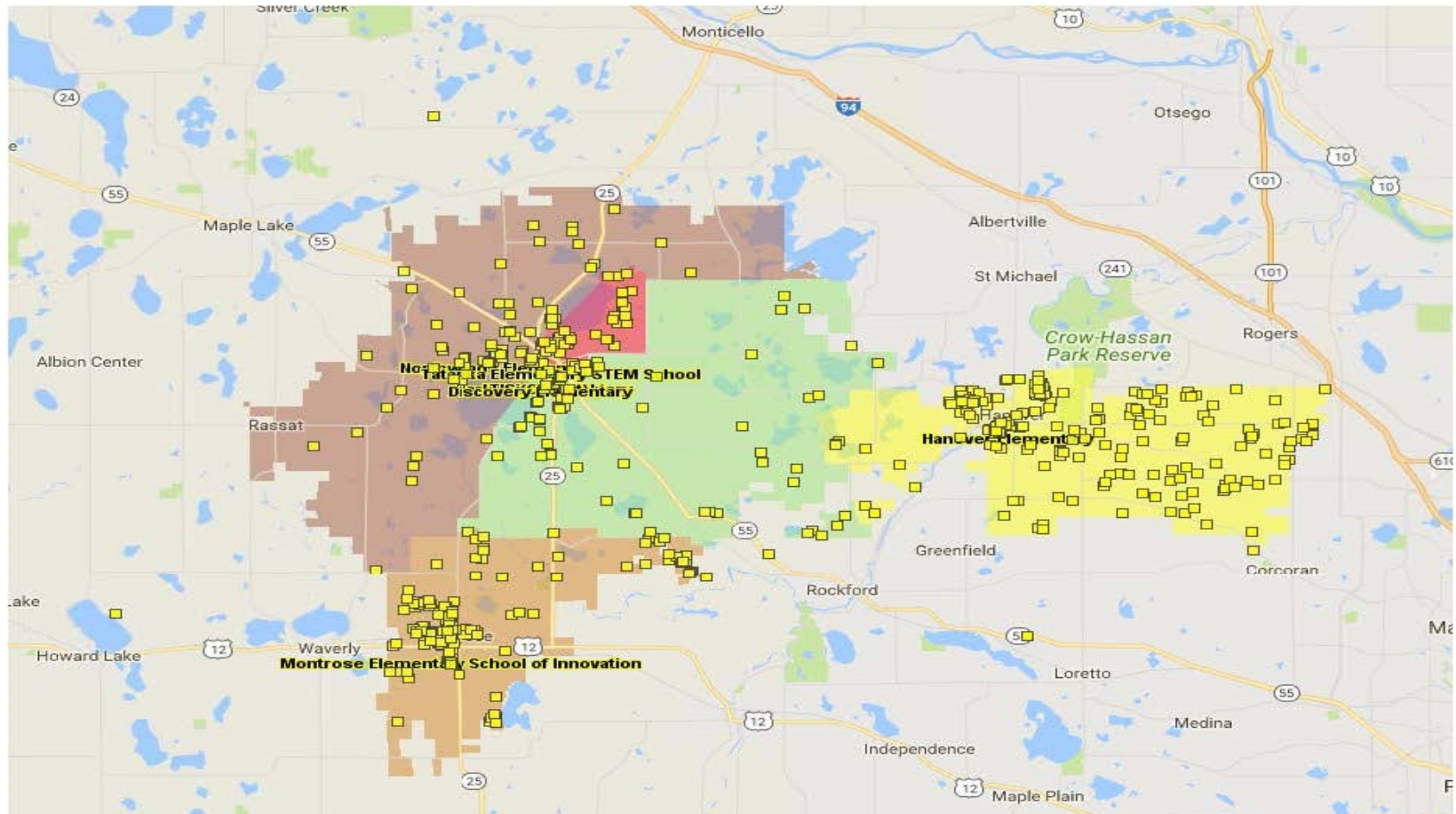
2016-17 Open Enrollment & Tuition Gain/Loss by District as of June 30th



2016-17 Open Enrollment & Tuition by Grade as of June 30th



2017-18 Resident Open Enrolled to Other Districts

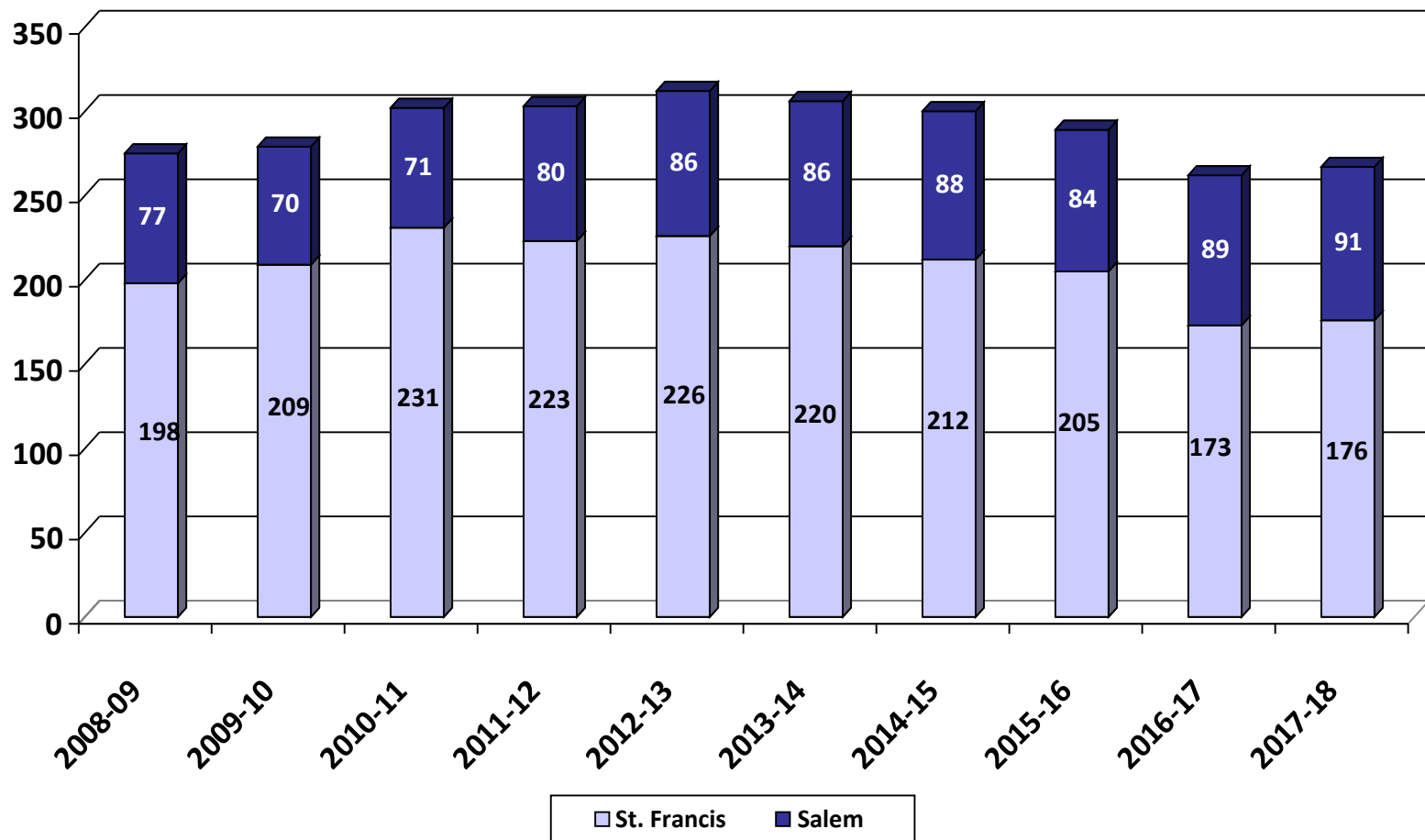


Nonpublic History

- Two nonpublic schools in the BHM district: St. Francis Xavier in Buffalo and Salem Lutheran in Greenfield.
- Both schools serve students from kindergarten through 8th grade.
- Home school totals not graphed below were 205 on 10/1/16 and 184 on 10/1/17

	08-09	09-10	10-11	11-12	12-13	13-14	14-15	15-16	16-17	17-18
Salem	77	70	71	80	86	86	88	84	89	91
St. Francis	198	209	231	223	226	220	212	205	173	176
Total	275	279	302	303	312	306	300	289	262	267
# Change	24	4	23	1	9	-6	-6	-11	-27	5
% Change	9.6%	1.5%	8.2%	.33%	2.97%	-.92%	-1.96%	-3.67%	-9.34%	1.91%

Nonpublic History



2016-17 Enrollment Fall vs. Spring

- Historically, the district's K-12 enrollment decreases from October 1 to June 1.
- Most of the enrollment drops happen in grades 9-12.

	Oct. 1 st , 2016	Jun. 1 st , 2017	Net
K	358	361	3
Gr. 1-5	2,120	2,104	-16
Gr. 6-8	1,352	1,362	10
Gr. 9-12	1,864	1,754	-110
Total	5,694	5,581	-113

Historical Enrollment Fall vs. Spring

- The district had one flat year (2006-07) of enrollment growth. All other years have declined during the year.

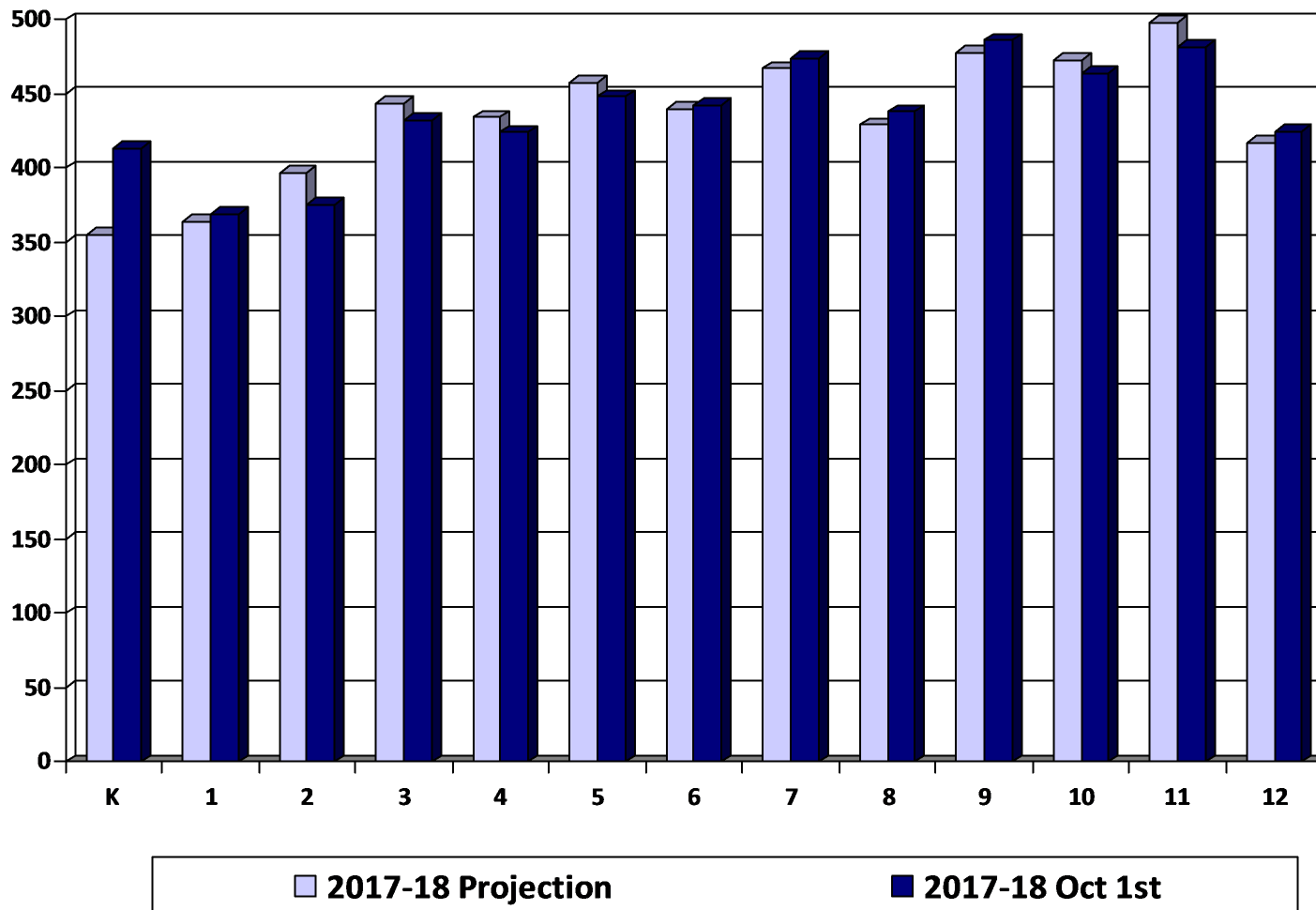
	K	Gr. 1-5	Gr. 6-8	Gr. 9-12	Net
2006-07	-2	-25	10	-33	0
2007-08	9	3	3	-55	-40
2008-09	0	0	-24	-84	-108
2009-10	-2	14	-17	-58	-63
2010-11	1	-11	-10	-63	-83
2011-12	-10	-11	-14	-94	-129
2012-13	-2	-14	1	-86	-101
2013-14	2	-7	2	-127	-130
2014-15	-10	6	-8	-89	-101
2015-16	7	39	-1	-99	-54
2016-17	3	-16	10	-110	-113

Review of 2017-18 Enrollment Projection

- Last year's enrollment projection was under-estimated by 18 students.
- Our internal monthly enrollment reports adjust down post-secondary and shared time students.
- The official Oct. 1st MARSS submission by MDE will report a higher enrollment with post-secondary and shared time students .

	2017-18 Projection	2017-18 Oct. 1st	Difference
K	355	413	58
Gr. 1-5	2,097	2,048	-49
Gr. 6-8	1,336	1,354	18
Gr. 9-12	1,866	1,857	-9
Total	5,654	5,672	18

Review of 2017-18 Enrollment Projection by Grade



Enrollment Projection Data

- The district uses the Schoolfinances.com enrollment projection model.
- The model allows schools to develop enrollment projections based on three different sets of data:
 - ☐ **October 1st MARSS submission**
 - ☐ **End of Year ADM** is generally used for financial forecast
 - ☐ **District Data** allows schools to enter enrollment history taken at any time, resident ADM or any other historical data by grade



Kindergarten Projection Methods

- **Hold constant** maintains the 2017-18 kindergarten level.
- **Linear projection** is a straightforward mathematical projection based on nothing more than the past five years of data.
- **County birth method** uses the total number of live births in Wright County and examines what percentage of those births enroll in kindergarten. The projection is based on the average percentage of the last four years.
- **Zip code method** examines the zip codes in the district and uses a linear projection of live births on the last four years of data and computes the projected enrollment based on the lowest, average, and highest ratios .
- **District-determined method** examines county birth rates in Wright County and compares that to actual student enrollment numbers in the District and projects that percentage for the next five years.

Kindergarten Projection Methods

Birth Year	Kdgn Enroll Year	Wright Co. Births	Actual Kdgn Enrollment	% of Wright Co. Births Enrolled
2006	2011	2,152	417	19.4%
2007	2012	2,183	433	19.8%
2008	2013	2,095	378	18.0%
2009	2014	1,943	417	21.5%
2010	2015	1,900	370	19.5%
2011	2016	1861	358	19.2%
2012	2017	1830	413	22.6%
2013	2018	1787	370*	20.7%*
2014	2019	1799	372*	20.7%*
2015	2020	1764	365*	20.7%*
2016	2021	1785	369*	20.7%*

* Projected K enrollment based on County births

Kindergarten Projection Methods

■ Using Oct. 1st district data

	13-14	14-15	15-16	16-17	17-18	18-19	19-20	20-21	21-22	21-22
Actual enrollment	378	417	370	358	413					
Hold constant						413	413	413	413	413
Linear projection						374	367	361	355	348
Wright Co. Ave. births						373	370	367	368	365
Zip code method - Low						321	340	318	319	317
District Determined Method						370	372	365	369	374

Enrollment Projection Methods

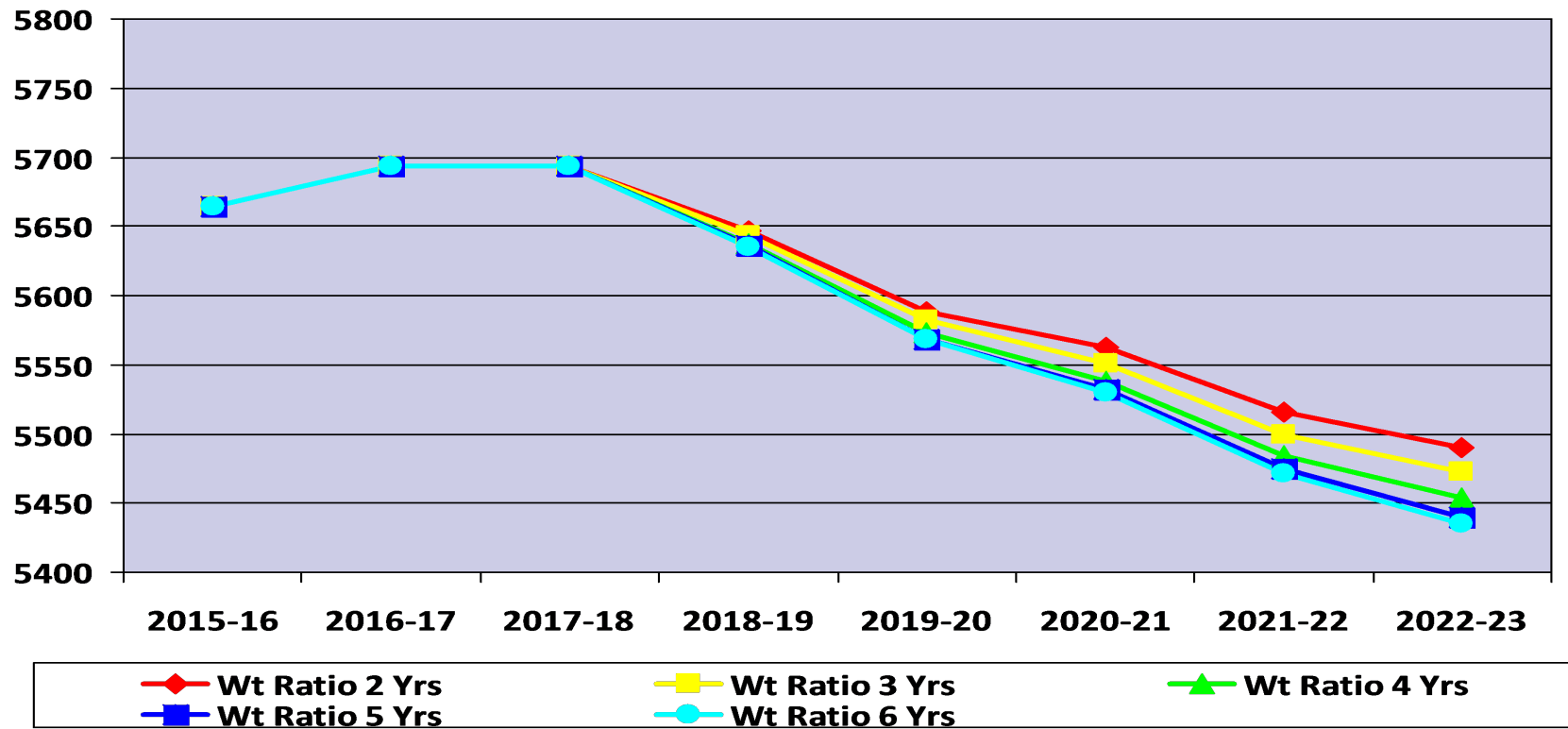
- After the kindergarten enrollment projection is complete, the overall K-12 enrollment is determined by a variety of methods:
 - ☐ Cohort Survival Method
 - ☐ Weighted Cohort Survival Method
 - ☐ Numerical Survival Method
 - ☐ Weighted Numerical Survival Method
 - ☐ Merged Method

Projection Methods Comparison

- Using Oct. 1st district data, eighteen different variations were examined.
- The following five were selected for detailed analysis:

	15-16	16-17	17-18	18-19	19-20	20-21	21-22	22-23
Wt Ratio 2 Years	5,664	5,694	5,672	5,647	5,588	5,562	5,516	5,490
Wt Ratio 3 Years	5,664	5,694	5,672	5,643	5,582	5,551	5,500	5,473
Wt Ratio 4 Years	5,664	5,694	5,672	5,638	5,573	5,538	5,484	5,454
Wt Ratio 5 Years	5,664	5,694	5,672	5,636	5,569	5,532	5,475	5,440
Wt Ratio 6 Years	5,664	5,694	5,672	5,635	5,568	5,530	5,471	5,435
Max Difference				11	21	32	45	55

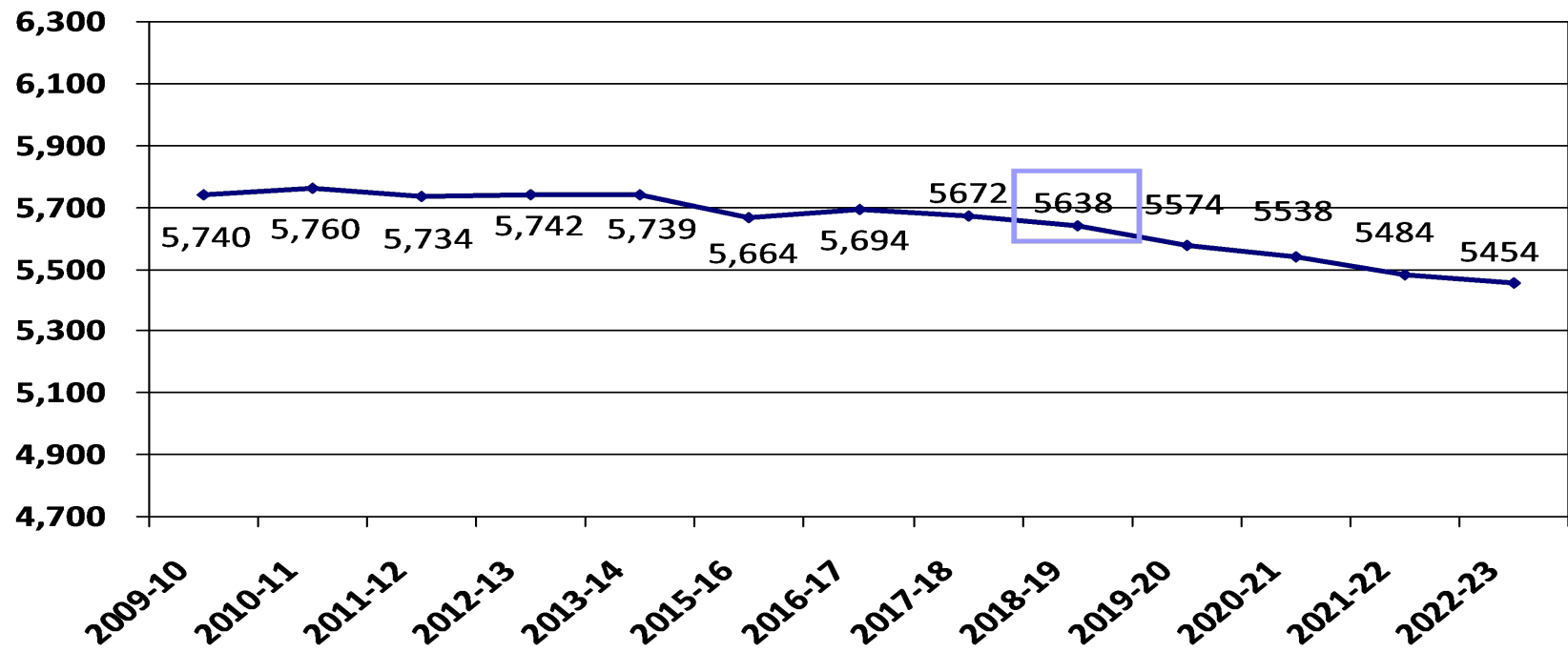
Projection Methods Comparison



2018-19 Enrollment Projection

- Factors considered: housing market, economic conditions, Wright County births, and open enrollment
- Weighted ratio 4 years
- K-12 Enrollment 5,638
- Decrease of 34 students or 0.6%

2018-19 Enrollment Projection

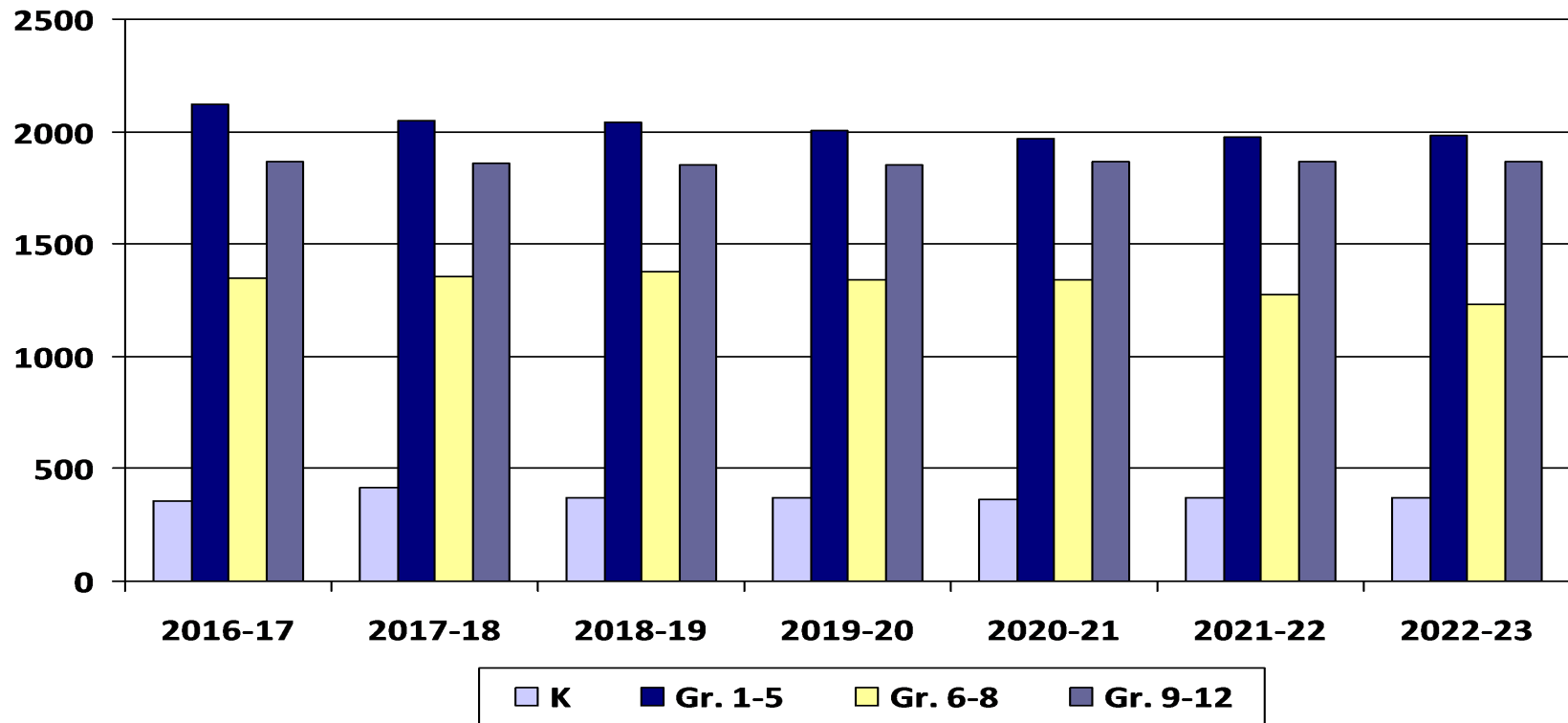


2018-19 Enrollment Projection by Grade Groupings

- With future enrollments, need to consider building capacity:
 - BHS – 1,935, PHX – 64 and PRIDE – 25
 - BCMS – 1,425
 - Elementary – 3,300

	2017-18	2018-19	2019-20	2020-21	2021-22	2022-23
K	413	370	372	365	369	374
Gr. 1-5	2,048	2,039	2,007	1,971	1,972	1,981
Gr. 6-8	1,354	1,376	1,341	1,338	1,277	1,233
Gr. 9-12	1,857	1,853	1,854	1,864	1,866	1,866
Total	5,672	5,638	5,574	5,538	5,484	5,454
	-22	-34	-64	-36	-54	-30
	-.39%	-.60%	-1.14%	-.65%	-.98%	-.55%

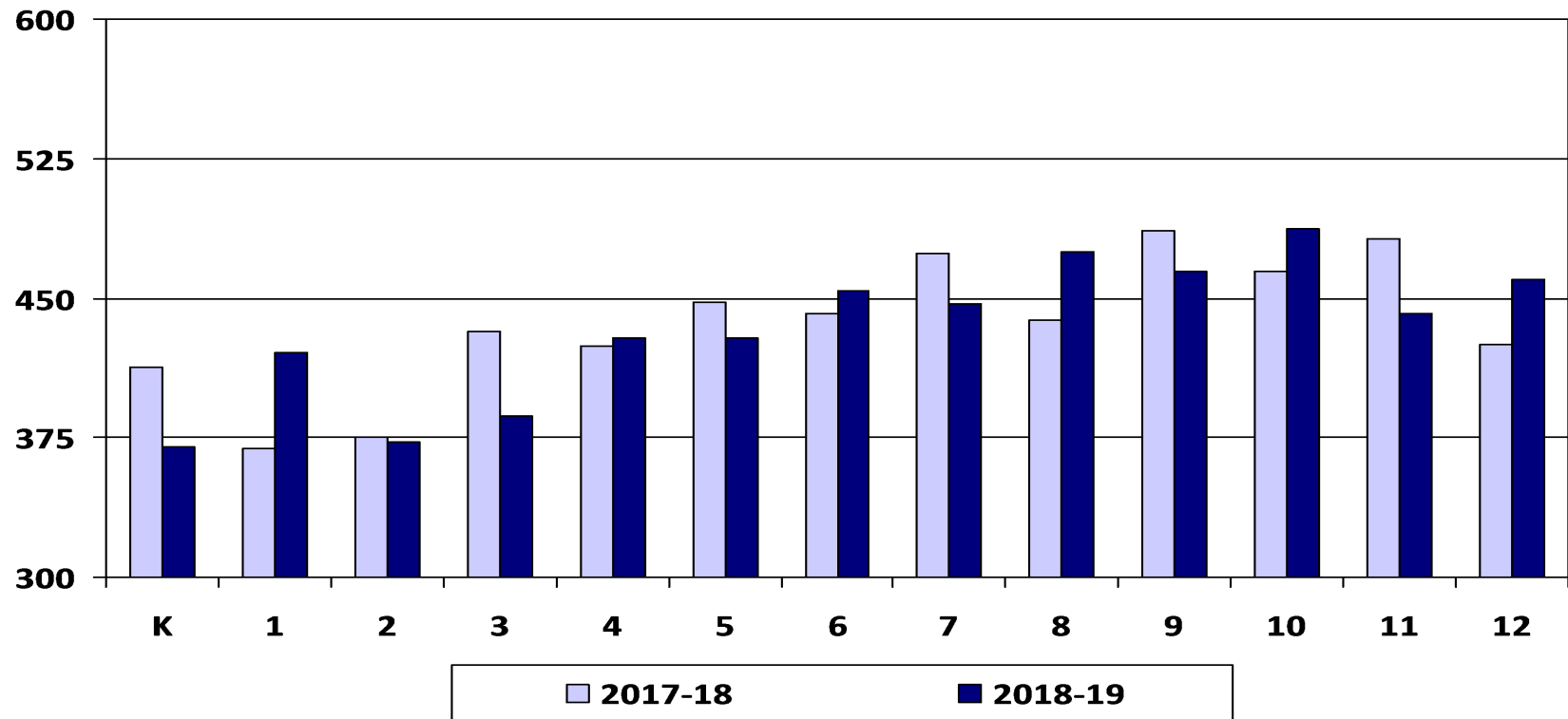
2018-19 Enrollment Projection by Grade Groupings



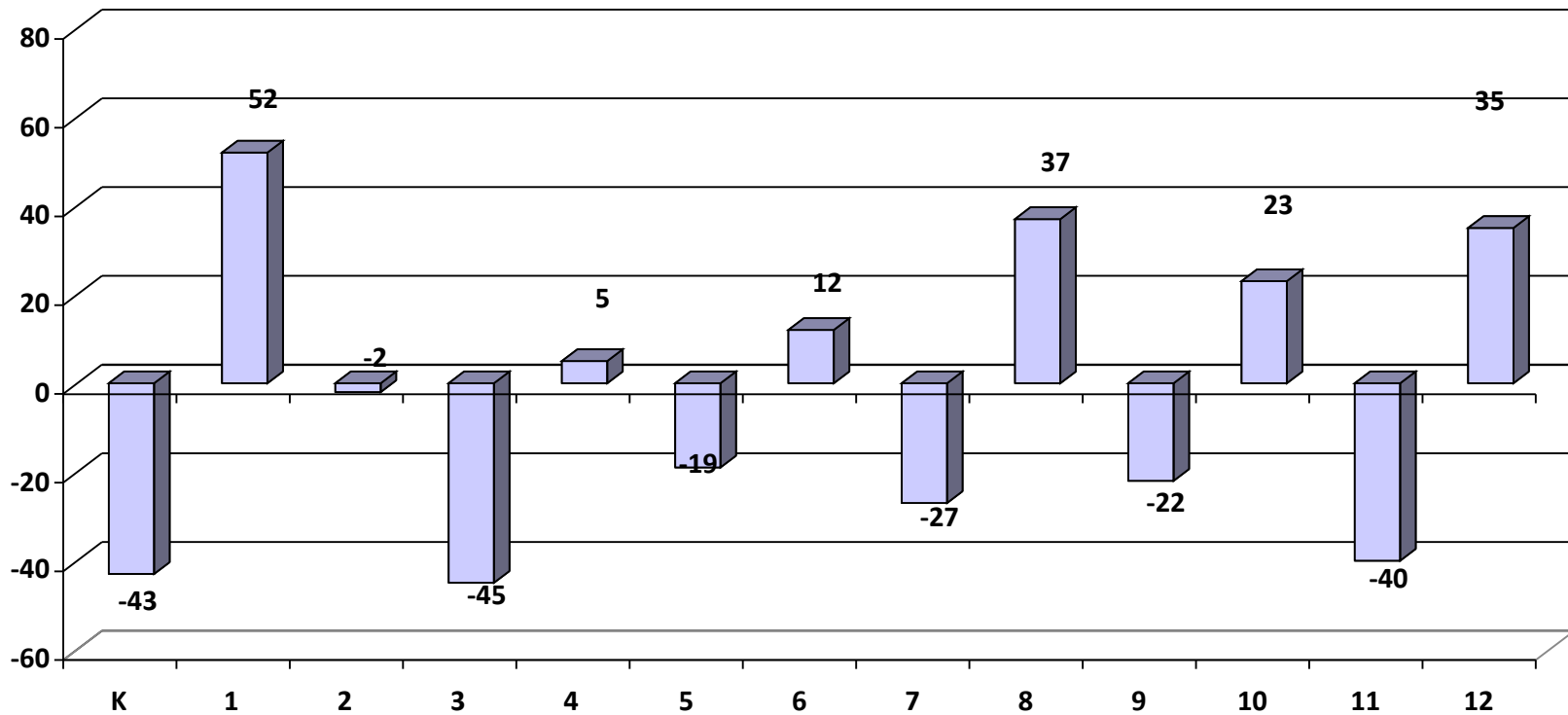
2018-19 Enrollment Projection by Grade

	2017-18	2018-19	2019-20	2020-21	2021-22	2022-23
K	413	370	372	365	369	374
1	369	421	378	380	372	376
2	375	373	426	382	384	377
3	432	387	385	439	394	396
4	424	429	384	382	436	391
5	448	429	434	388	386	441
6	442	454	435	440	393	391
7	474	447	459	439	444	397
8	438	475	447	459	440	445
9	486	464	503	474	487	466
10	464	487	465	504	475	488
11	482	442	464	443	481	453
12	425	460	422	443	423	459
Total	5,672	5,638	5,574	5,538	5,484	5,454

2017-18 Actual vs. 2018-19 Enrollment Projection by Grade



2018-19 Enrollment Change by Grade



WADM Report

- The weighted average daily membership (WADM) projection shows a decline in student aid.
- Keep in mind the district's enrollment history also tends to decline from Oct. 1st to June 1st.

	2018-19		2019-20		2020-21		2021-22	
	Enroll	WADM	Enroll	WADM	Enroll	WADM	Enroll	WADM
HK	49	49	49	49	48	48	49	49
K	370	370	372	372	365	365	369	369
Gr. 1-3	1,181	1,181	1,189	1,189	1,201	1,201	1,150	1,150
Gr. 4-6	1,312	1,312	1,253	1,253	1,210	1,210	1,215	1,215
Gr. 7-8	922	1,106	906	1,087	898	1,078	884	1,061
Gr. 9-12	1,853	2,224	1,854	2,225	1,864	2,237	1,866	2,239
ECSE	72	72	73	73	71	71	72	72
M.C.P.U		15		19		11		15
Total	5,759	6,329	5,696	6,266	5,657	6,221	5,605	6,170

Conclusion

- Uncertain economic factors make enrollment projections difficult.
- BHM's enrollment is projected to decline over the next three to five years.



5,638