

# PARKROSE SCHOOL DISTRICT LONG-RANGE FACILITY PLANNING School Board Presentation





# PRIORITIES AND TIMELINE





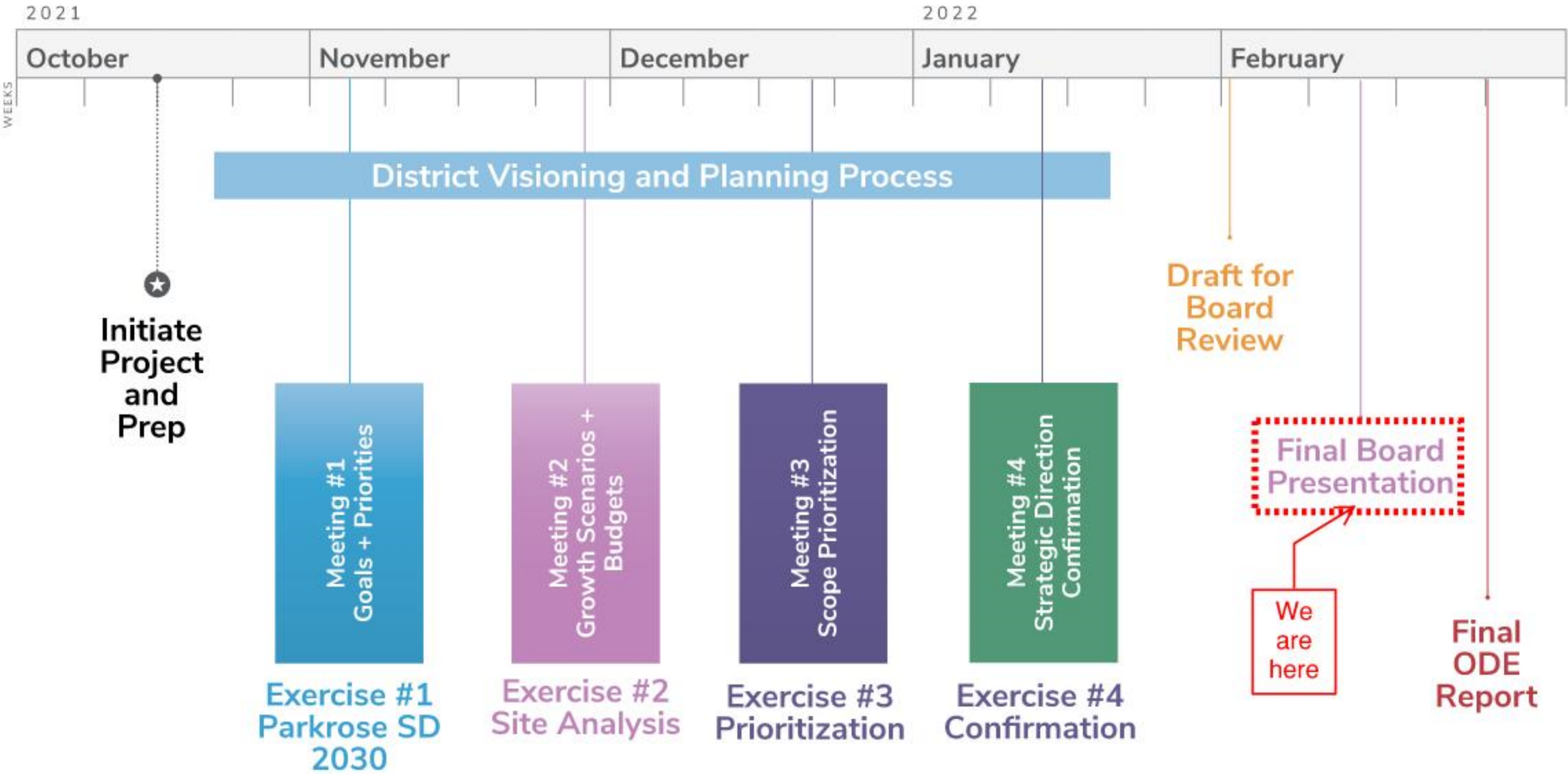
# Report Outcomes / Priorities Summary

- **High school is a ‘high need’ campus:**
  - Expand General Education classrooms to meet capacity needs
  - Expand Athletic program space to align with other comprehensive high schools
  - Expand Vocational program space
- **Focus also on Prescott, Russell and Shaver Elementary schools:**
  - Provide secure, accessible entries to all buildings
  - Accommodate additional classroom capacity
  - Expand undersized Cafeteria spaces
- **Rental properties focus on envelope and systems, maintain them**





# Planning Process Timeline



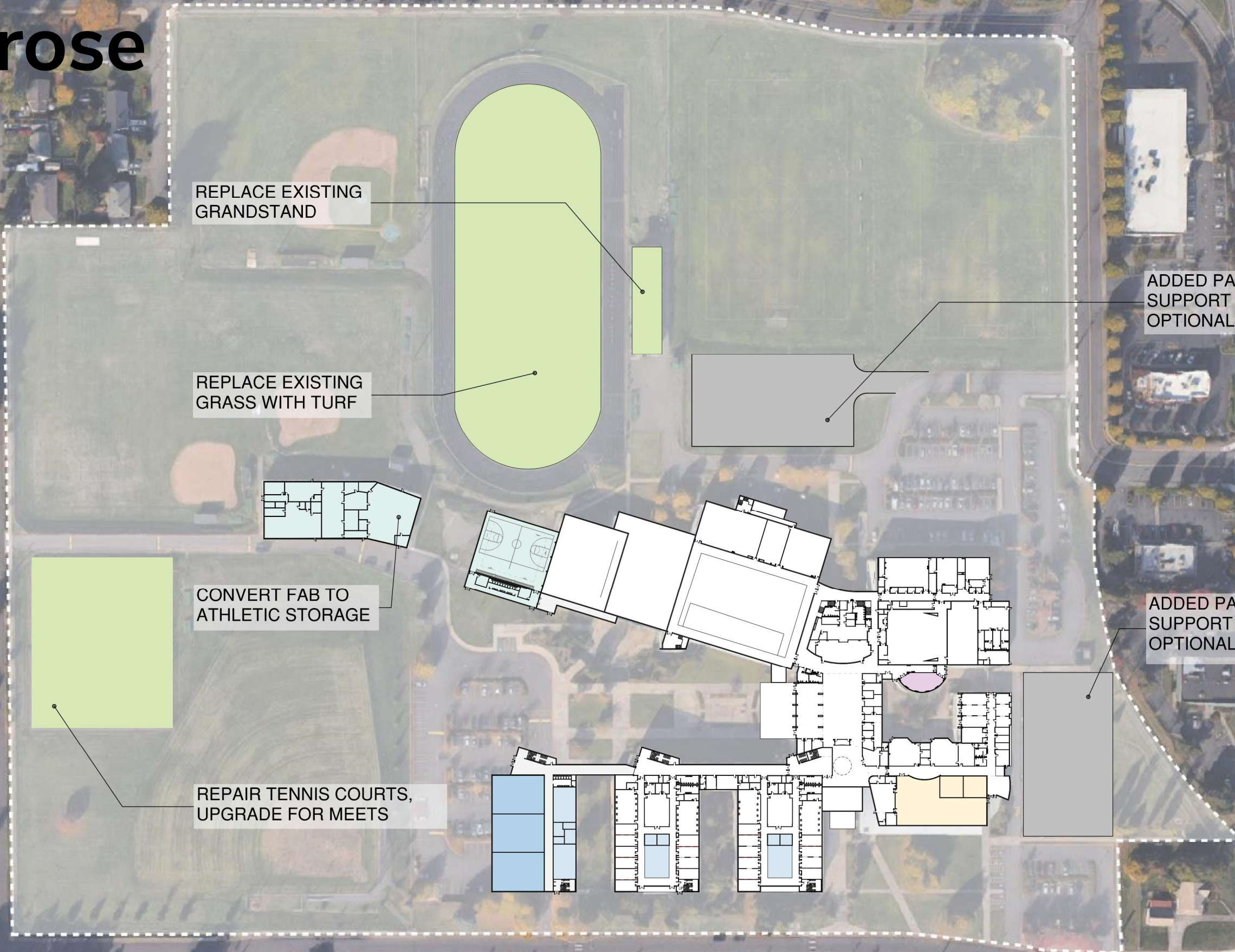


# PROPOSED PLANNING SCOPE BY SITE





# Parkrose High Site



REPLACE EXISTING GRANDSTAND

REPLACE EXISTING GRASS WITH TURF

CONVERT FAB TO ATHLETIC STORAGE

REPAIR TENNIS COURTS, UPGRADE FOR MEETS

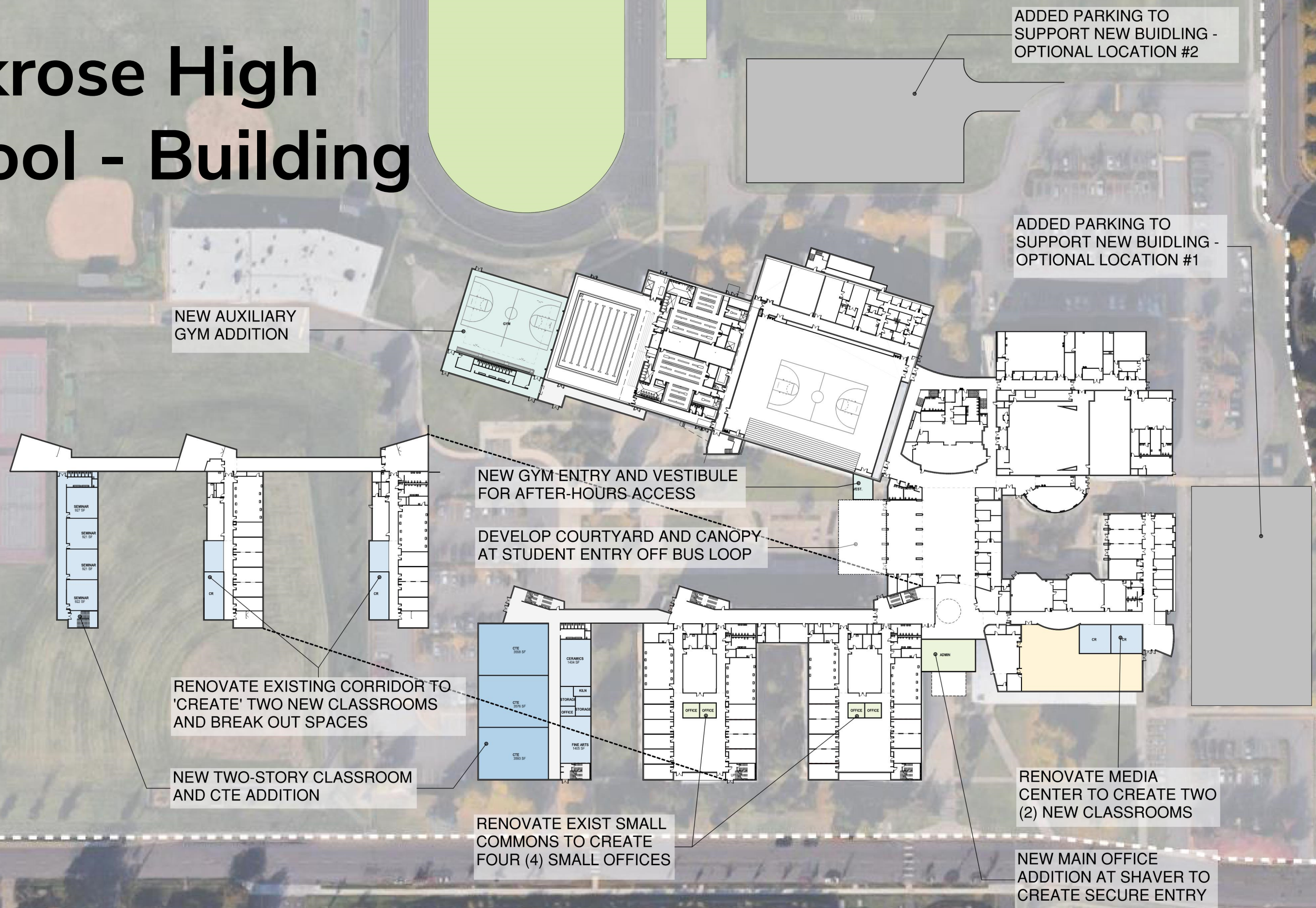
ADDED PARKING TO SUPPORT NEW BUILDING - OPTIONAL LOCATION #2

ADDED PARKING TO SUPPORT NEW BUILDING - OPTIONAL LOCATION #1





# Parkrose High School - Building





# Prescott Elementary

Classroom Addition - Option 1

Parking Lot\* - Option 1  
Possible access via MHCC lot

Added ramps for ADA access

New Covered Play Structure and upgraded Playground for Options 1 or 2

Renovate Kitchen/ Server/ Cafeteria/ Platform for better use

Added ramps for ADA access

Renovate Administration and provide secure vestibule

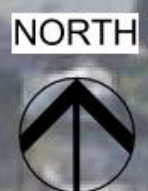
Elevator for access to lower level

Parking Lot\* - Option 2

Classroom Addition - Option 2

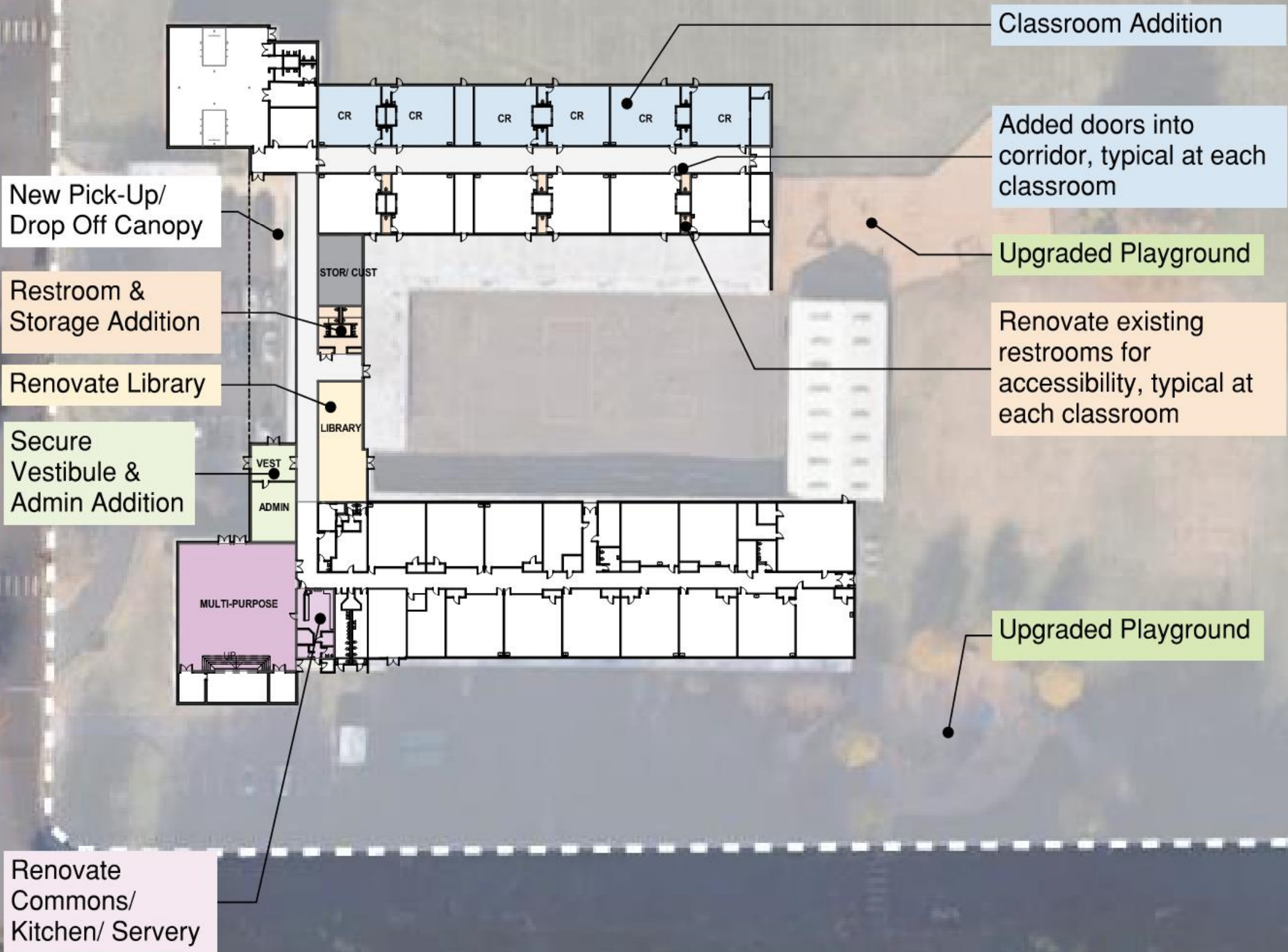
Access road to parking

\* Note: Added parking may be required by the building code if an addition or significant renovation is done



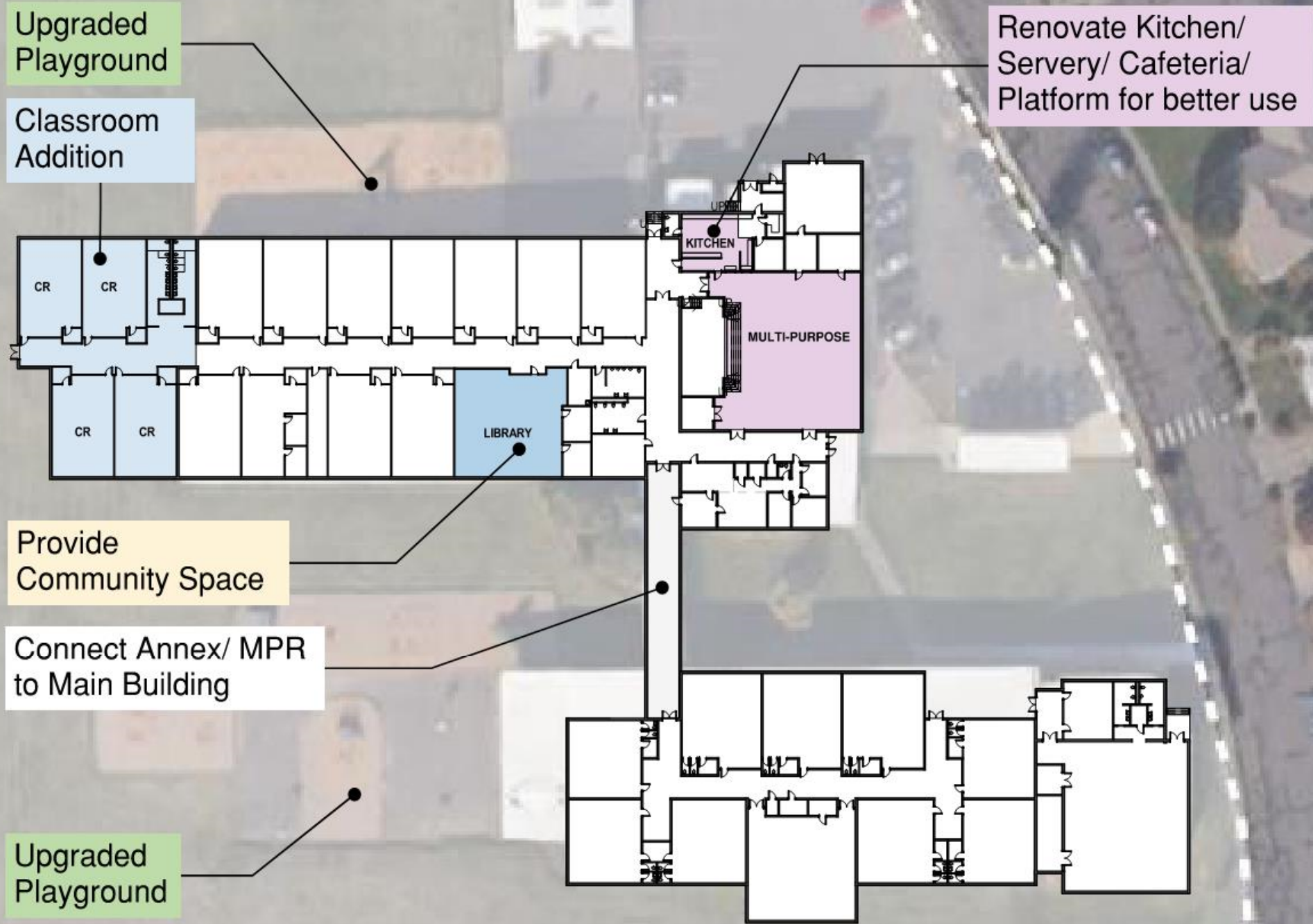


# Russell Elementary





# Shaver Elementary





# District Office

MOTORIZED GATE FOR ADDED SECURITY

INFILL EXISTING COURTYARD FOR ADDITIONAL OFFICE SPACE

REPLACE ROOFING, MINOR INTERIOR RENOVATIONS FOR INCREASED EFFICIENCY

UPGRADE DOORS, EXTERIOR ENVELOPE (POWERED DOORS, REPAIR DAMAGED HEADERS)

REPLACE VEHICLE LIFTS IN SERVICE BAYS





# COST STUDY OPTIONS



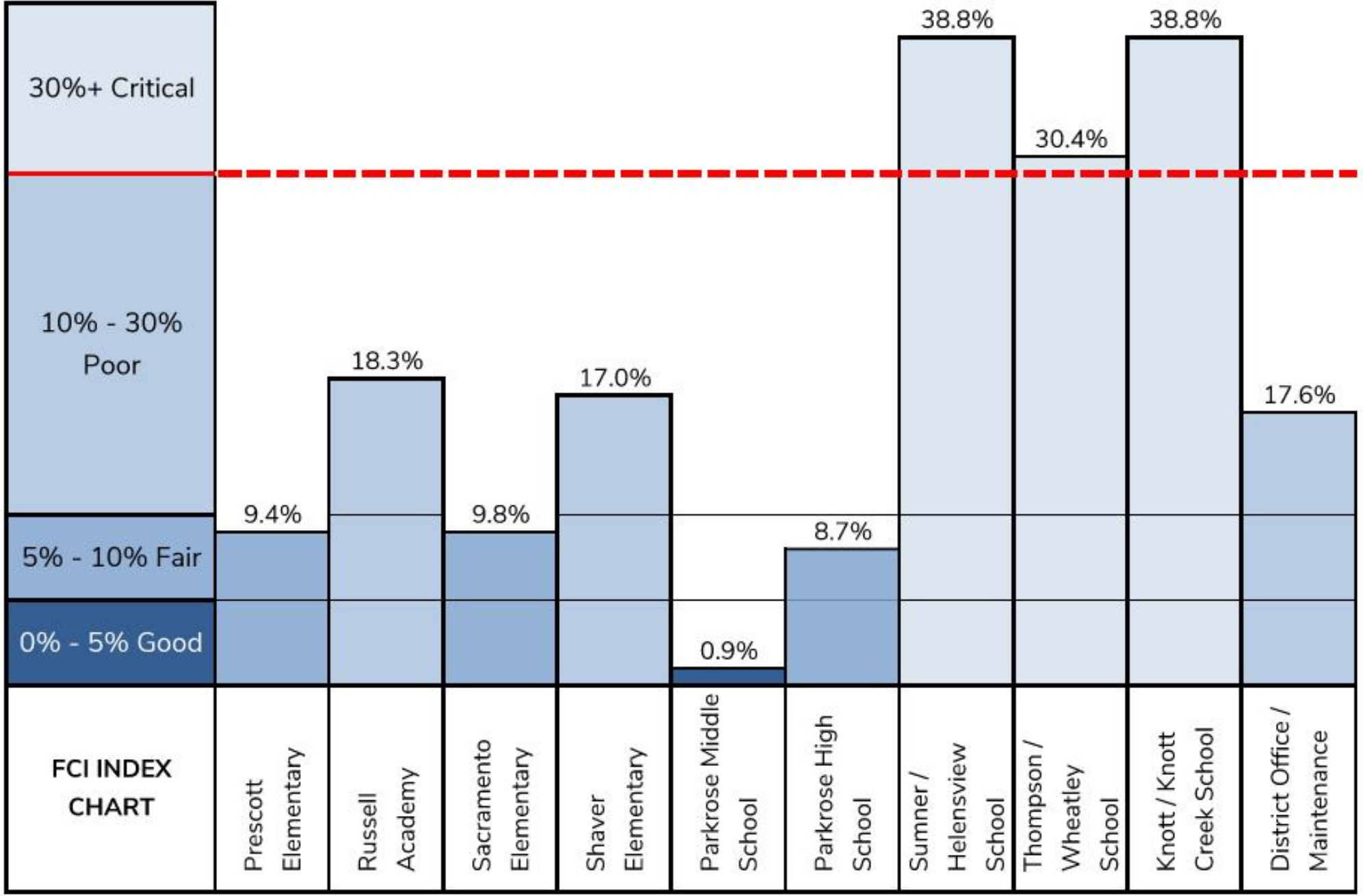
Parkrose School District  
Long-Range Facility Planning  
Multnomah County, Oregon

February 14, 2022 – Board Meeting

**Soderstrom Architects**



# Facility Condition Index (FCI) Baseline Info



Starting point for planning process  
Evaluating physical condition only

- Does not include:
- Structural
  - Hazardous Materials
  - Accessibility
  - Educational Adequacy





# Facilities Costs – Priority Scope Identified

DISTRICT FACILITY	FACILITIES SCOPE BY CATEGORY							Total Project Costs
	Mechanical, Electrical + Plumbing	Technology Infrastructure	Building Envelope + Site	Seismic Upgrades	Safety + Security Upgrades	Food Services	Accessibility + Athletics	
PRESCOTT ES	\$132,000	\$109,224	\$1,059,024	TBD	\$108,000	\$1,050,000	\$585,000	<b>\$4,108,385</b>
RUSSELL ES	\$694,000	\$90,081	\$902,261	TBD	\$550,000	\$673,750	\$300,000	<b>\$4,333,624</b>
SACRAMENTO ES	\$174,800	\$92,491	\$1,874,491	TBD	N/A	\$166,250	\$200,000	<b>\$3,385,843</b>
SHAVER ES	\$330,102	\$98,811	\$1,978,811	TBD	N/A	\$892,500	\$300,000	<b>\$4,860,302</b>
PARKROSE MS	N/A	\$155,453	N/A	N/A	N/A	\$16,000	\$300,000	<b>\$636,462</b>
PARKROSE HS	\$3,910,000	\$586,118	\$2,115,618	TBD	\$900,000	\$563,300	\$513,250	<b>\$11,594,187</b>
HELENSVIEW / SUMNER	\$2,102,000	N/A	\$2,118,500	TBD	N/A	N/A	N/A	<b>\$5,697,675</b>
WHEATLEY / THOMPSON	\$2,172,000	N/A	\$750,000	TBD	N/A	N/A	N/A	<b>\$3,944,700</b>
KNOTT CREEK / KNOTT	\$1,765,000	N/A	\$825,000	TBD	N/A	N/A	N/A	<b>\$3,496,500</b>
District Office, Maint. + Bus Barn	\$151,225	\$36,225	\$756,200	TBD	N/A	N/A	N/A	<b>\$1,273,928</b>
<b>Subtotal</b>	<b>\$11,431,127</b>	<b>\$1,168,403</b>	<b>\$12,379,905</b>	<b>\$0</b>	<b>\$1,558,000</b>	<b>\$3,361,800</b>	<b>\$2,198,250</b>	<b>\$43,331,605</b>





# Planning Costs – Priority Scope Identified

DISTRICT FACILITY	PLANNING SCOPE		SUMMARY
	Added Capacity / Educational Adequacy	Site Upgrades	Total Project Costs
PRESCOTT ES	\$3,488,100	\$240,000	\$5,032,935
RUSSELL ES	\$6,512,500	\$208,000	\$9,072,675
SACRAMENTO ES	\$0	N/A	\$0
SHAVER ES	\$4,128,500	N/A	\$5,573,475
PARKROSE MS	\$0	\$0	\$0
PARKROSE HS	\$23,806,500	\$9,307,000	\$44,703,225
HELENSVIEW / SUMNER	N/A	N/A	\$0
WHEATLEY / THOMPSON	\$0	N/A	\$0
KNOTT CREEK / KNOTT	\$0	N/A	\$0
District Office, Maint. + Bus Barn	\$1,667,000	N/A	\$2,250,450
<b>Subtotal</b>	<b>\$39,602,600</b>	<b>\$9,755,000</b>	<b>\$66,632,760</b>





# Planning Scope List: Prescott Elementary

- ADD FOUR (4) CLASSROOMS
- ADD ACCESSIBLE RAMP TO ENTRY
- ADD PARKING ON SITE
- REPLACE COVERED PLAY STRUCTURE TO ACCOMMODATE

**TOTAL ESTIMATED COST:**

**\$5.0 MILLION**



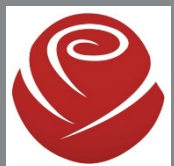


# Planning Scope List: Russell Elementary

- ADD SIX (6) CLASSROOMS
- ADD SECURE ENTRY VESTIBULE
- RENOVATE LIBRARY, FRONT OFFICE TO ACCOMMODATE

**TOTAL ESTIMATED COST:**

**\$9.1 MILLION**





# Planning Scope List: Shaver Elementary

- ADD FOUR (4) CLASSROOMS
- ENCLOSE COVERED WALKWAY BETWEEN BUILDINGS
- RENOVATE LIBRARY FOR EXPANDED FUNCTION

**TOTAL ESTIMATED COST:**

**\$5.6 MILLION**





# Planning Scope List: Parkrose High SITE

- REPLACE GRANDSTAND BUILDING
- ADD NEW GYM ENTRY, IMPROVE EXISTING ENTRY
- REPLACE GRASS FOOTBALL FIELD WITH TURF
- ADD FIELD LIGHTING, SCOREBOARD, ADD JAVELIN
- UPGRADE TENNIS COURTS
- CONVERT 'FAB' FOR ATHLETIC PROGRAM USE
- ADD ALL-SEASON BUILDING

**TOTAL ESTIMATED COST:                      \$12.6 MILLION**

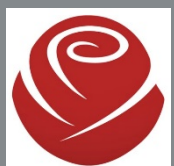




# Planning Scope List: Parkrose High BUILDING

- ADD CLASSROOM WING, INCLUDING VOCATIONAL SPACE
- ADD AUXILIARY GYM BUILDING
- RENOVATE MEDIA CENTER TO ADD (2) CLASSROOMS
- RENOVATE EXIST BUILDING TO ADD (2) CLASSROOMS
- ADD NEW SECURE VESTIBULE ENTRY OFF SHAVER
- RENOVATE SMALL COMMONS TO ADD (4) OFFICES

**TOTAL ESTIMATED COST:                      \$32.1 MILLION**





# Planning Scope List: District Office

- ADD OFFICE SPACE FOR INCREASED CAPACITY
- RENOVATE WAREHOUSE FOR NUTRITION SERVICES
- RENOVATE FACILITIES FOR BETTER FUNCTIONALITY

**TOTAL ESTIMATED COST:**

**\$2.2 MILLION**





# TOTAL LONG-RANGE PLANNING SCOPE

- FACILITIES SCOPE: \$43,331,605
- PLANNING SCOPE: \$66,632,760

## IDENTIFIED SCOPE

LONG-RANGE PLANNING: \$109,964,365





# Goals of the Long-Range Plan

- Intended as a baseline for the next step in the process
- Use this as a starting point for possible pre-bond planning
- Opportunity to re-evaluate scope based on intended timing
- Not anticipating doing anything immediately
- Timeline is further out to start this





# Next Steps: Submit Long-Range Plan to ODE

- Provides reimbursement for costs of the report
- Allows access to submit for possible Oregon Schools Capital Improvement Matching grant (OSCIM), up to \$4 million.
- Continue to meet as a committee
- Transition into possible pre-bond planning
- Confirm timelines and expectations
- Evaluate and provide further detail on proposed scope





# Questions for the Board

- Do the priorities identify align with district goals?
- Do you support the approach taken by the committee?
- Do you support this overall strategy for the long-range plan?

## ACTION ITEM:

Do you support and approve of the preliminary Long-Range Plan scope?





# Clarifications / General Questions

- **Planning Timeline (page 4):**
  - Unchanged from previous, included to show current ‘we are here’ status
  - Long-Range Plan submission to ODE allows for minor revisions, clarifications
  
- **Elementary School Additions (pages 8-10):**
  - Anticipated needed within next 10 years, not immediately
  - Sacramento determined not required due to enrollment, current capacity



# Clarifications / General Questions

- **Facilities Condition Index (FCI) Chart (page 13):**
  - From Facilities Assessment, focuses on physical condition only
  - Does not take into account Educational Adequacy or planning needs
  
- **Seismic Upgrades (page 14 chart):**
  - No costs / scope currently indicated to upgrade existing buildings
  - Plan on utilizing state programs (Seismic Rehabilitation Grant)
  - Provides up to \$2.5 million per building to retrofit to life safety





# QUESTIONS



Parkrose School District  
Long-Range Facility Planning  
Multnomah County, Oregon

February 14, 2022 – Board Meeting

**Soderstrom Architects**