



Child Nutrition

Operating with approval from Denton ISD, Texas Department of Agriculture, United States Department of Agriculture

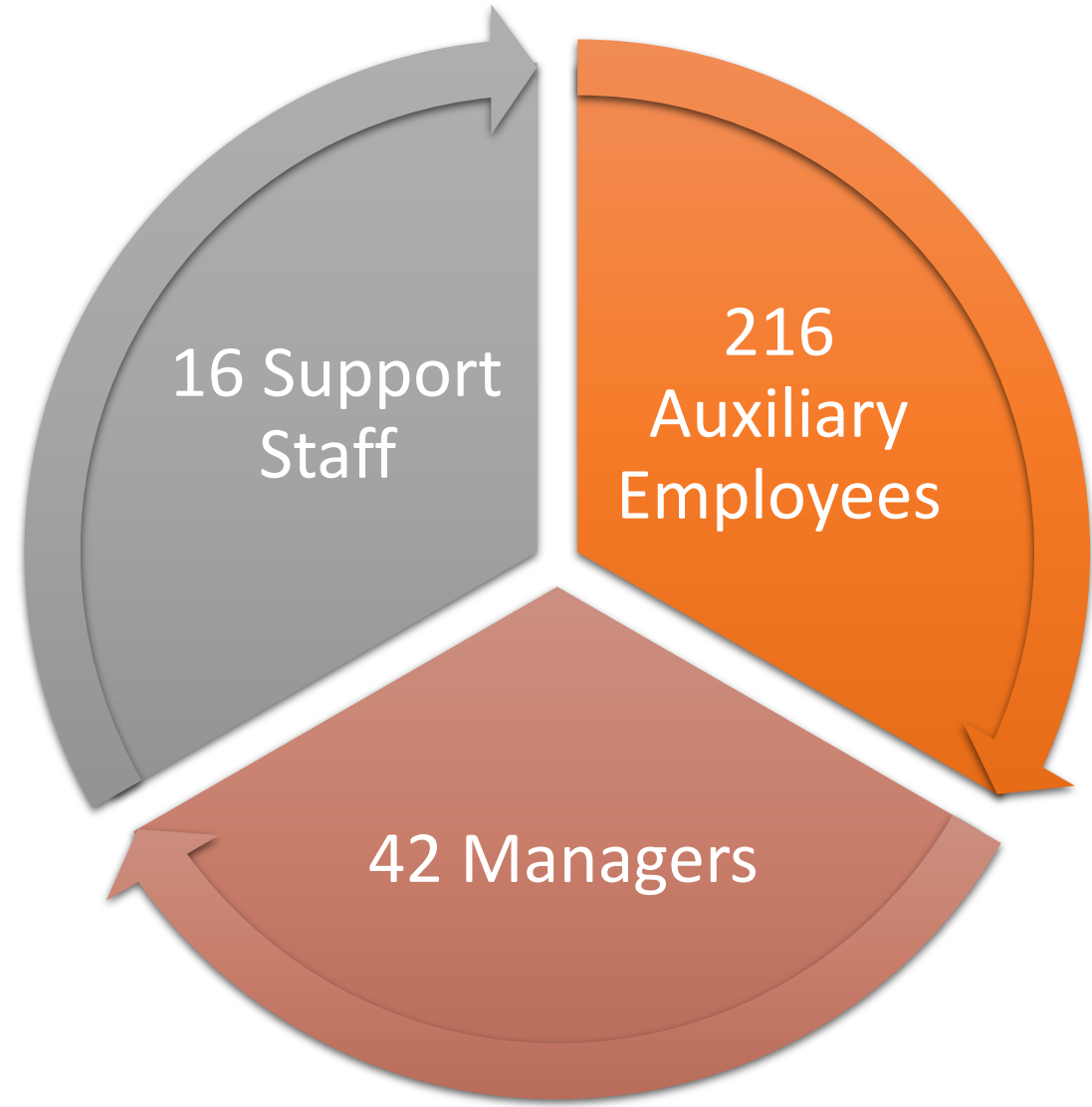
Child Nutrition

Quality
Service

Quality
Food

Quality
Experience

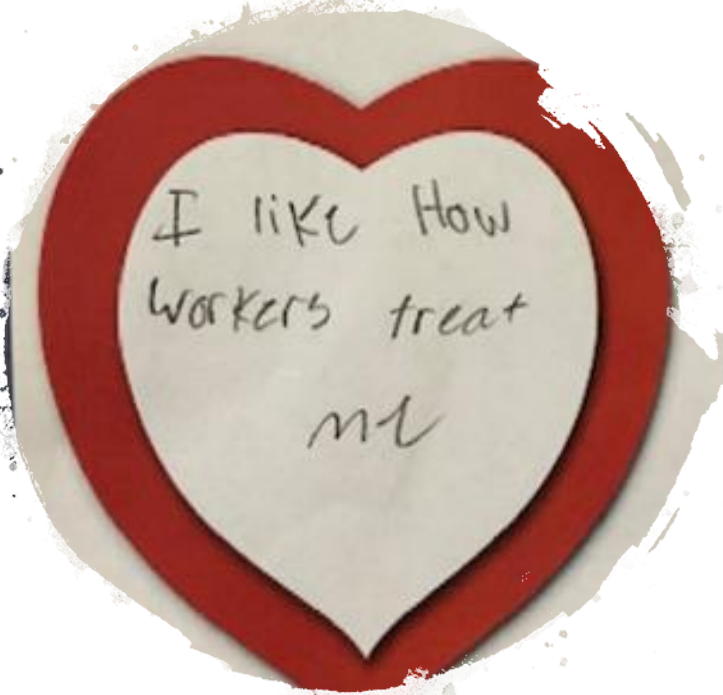
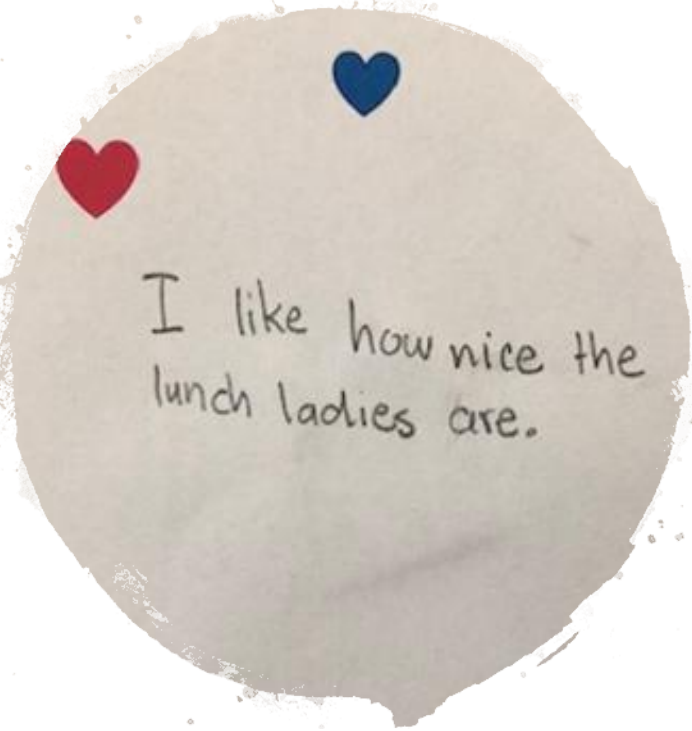
Quality Service





Quality Food





Quality Experience

Making the school day the best it can be.

Elementary Highlights

Stephens Elementary Advisory Committee





Adkins/Cross Oaks Fresh Fruit and Vegetable Bar

Middle
School
Highlights

All Lines serving the same items

Every point of sale open

Fresh whole fruit available daily

Improved breakfast participation

High School Updates

Deli lines, improved items offered
and added ovens

Pizza concept new in 2018

Updated staffing plans for better
service

Freshman Day Sponsor



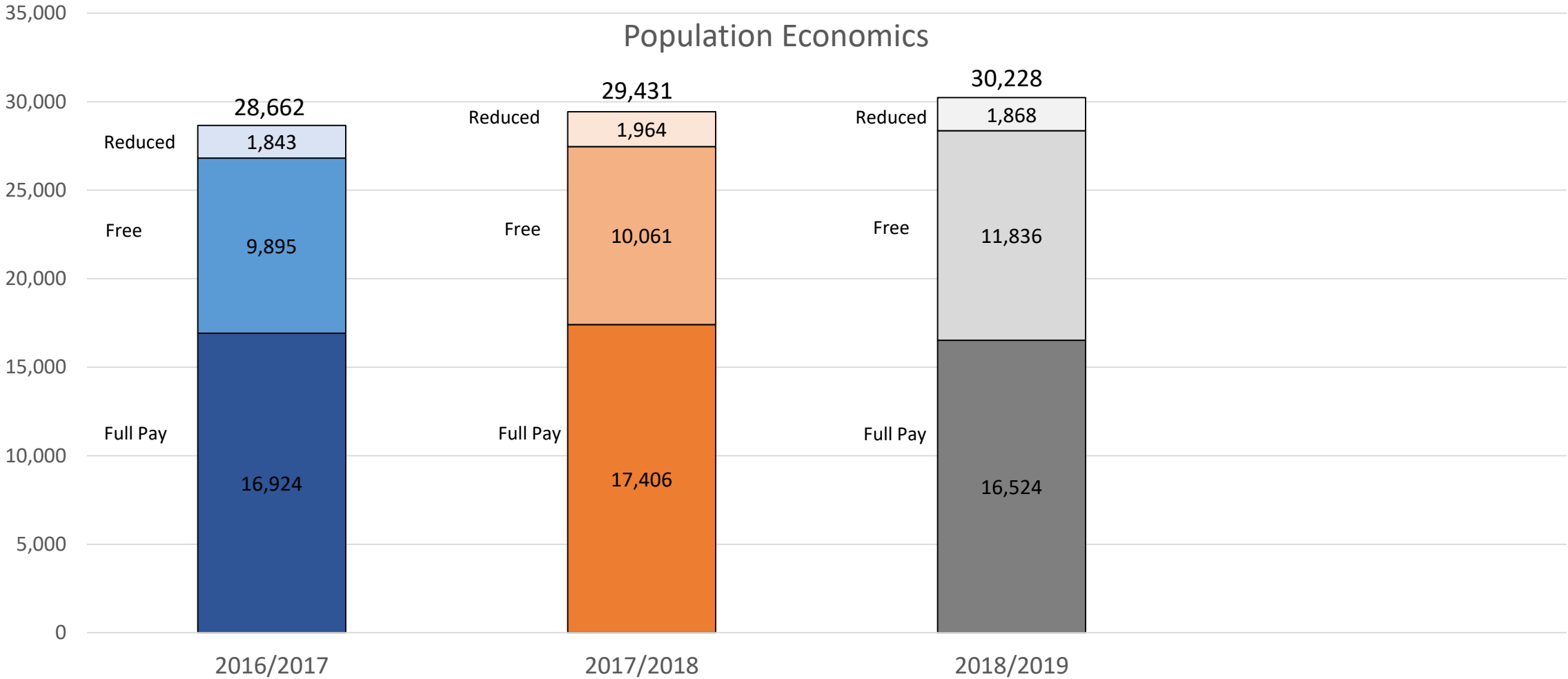
Serving our students

2018/2019 - 353 Meals served at 19 Schools
2017/2018 - 214 Meals served at 24 Schools

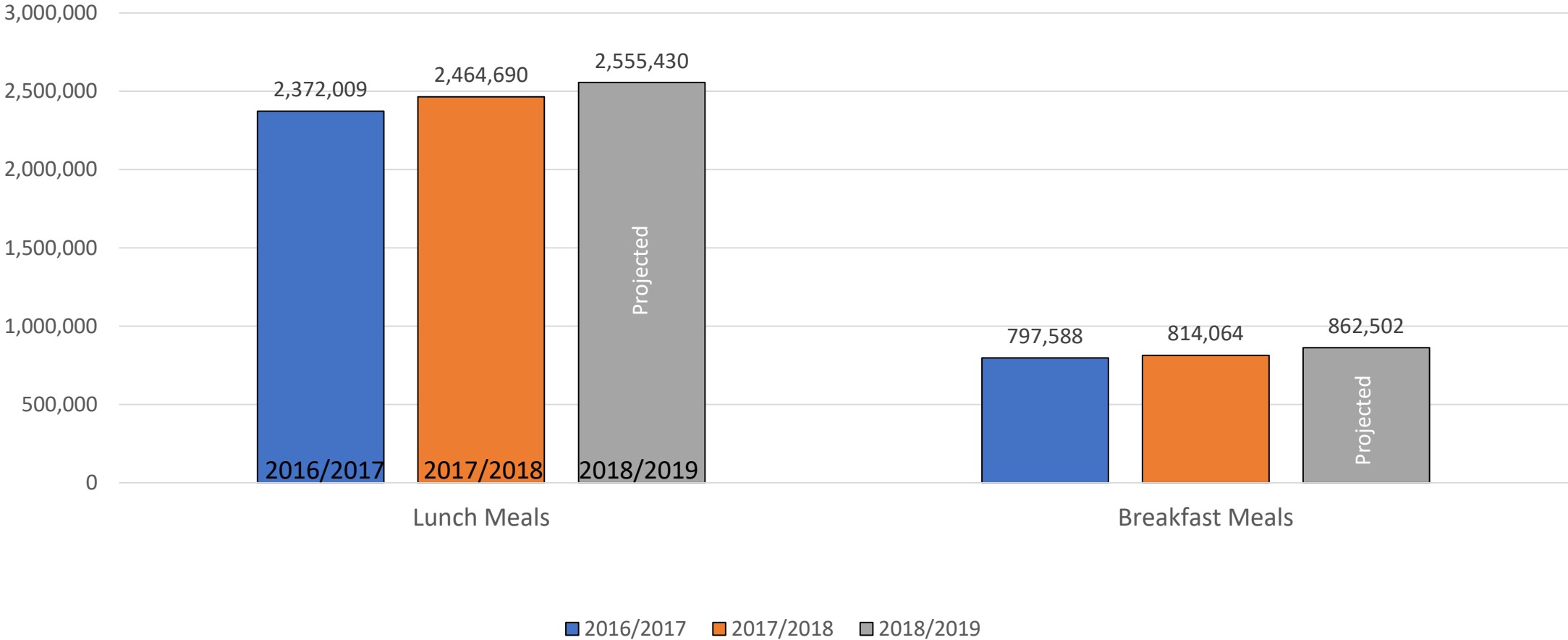


The Business of Child Nutrition

Population Economics

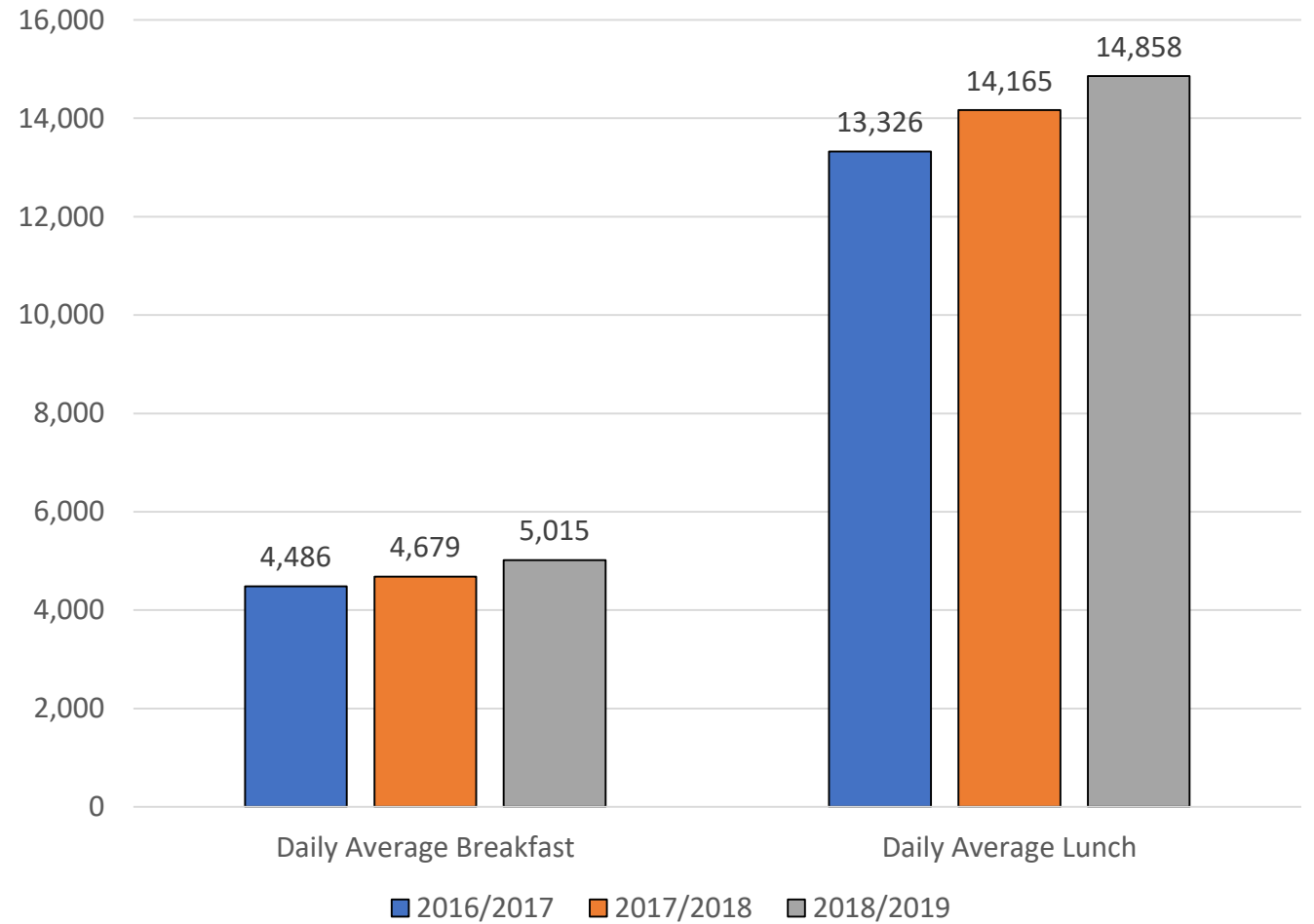


Total Meals Served

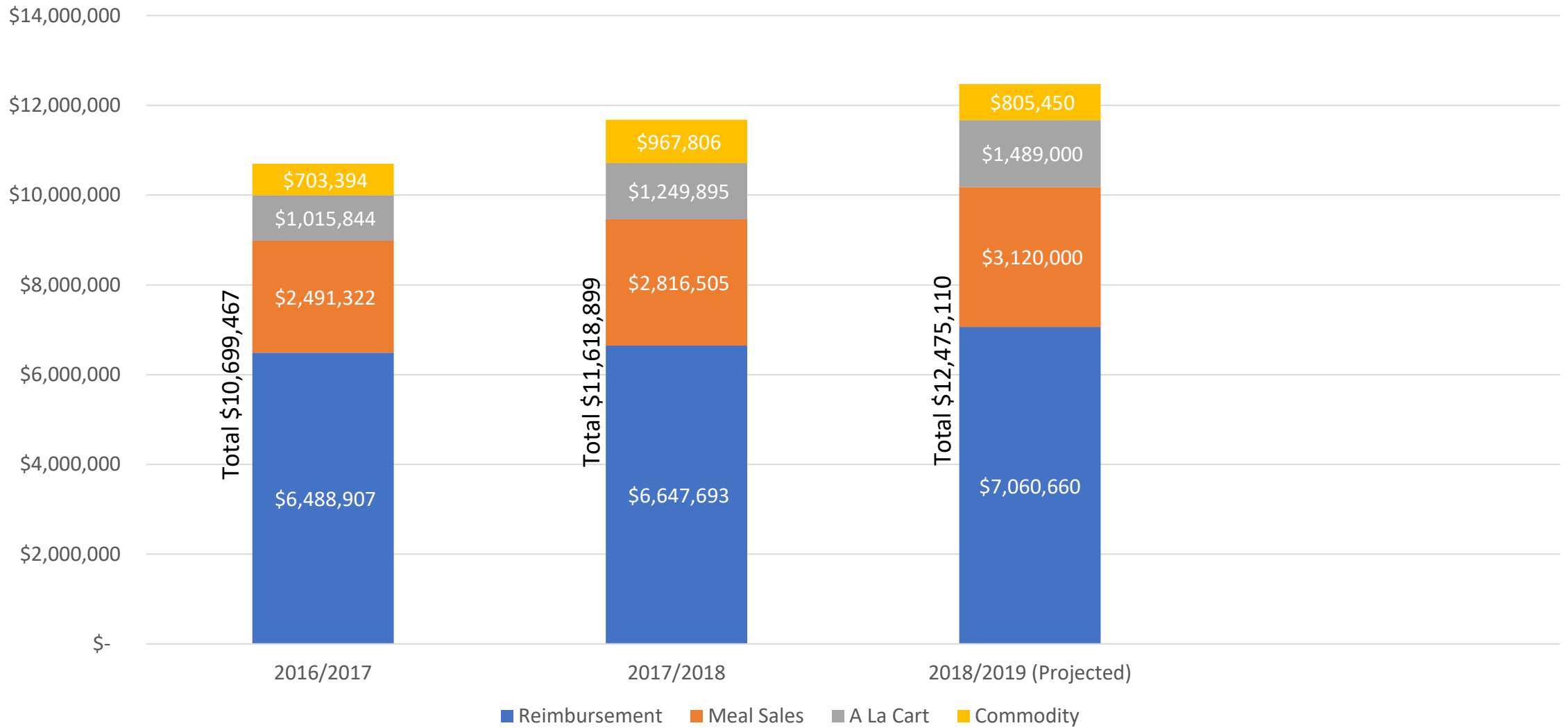


Daily Meal Counts

Average Breakfast & Lunch



Revenue Categories



Comparison of Prices

	DENTON ISD	FRISCO ISD	LITTLE ELM ISD	PROSPER ISD	LEWISVILLE ISD
Elementary Breakfast	\$1.10	\$1.50	\$1.75	\$1.25	\$1.25
Elementary Lunch	\$2.75	\$2.50	\$2.75	\$2.70	\$2.60
Secondary Breakfast	\$1.35	\$1.50 to 2.20	\$1.75	\$1.40	\$1.25
Secondary Lunch	\$3.00	\$2.80 to 4.00	\$3.00	\$3.00	\$2.85

Breakfast and Lunch Price Rate Increase Proposal

Year	2015	2019 Proposed
Elementary Breakfast	\$1.10	\$1.20
Elementary Lunch	\$2.75	\$2.80
Secondary Breakfast	\$1.35	\$1.45
Secondary Lunch	\$3.00	\$3.10

Additional Funds Generated

Year	2019 Proposed
Elementary Breakfast +.10	\$7,796
Elementary Lunch +.05	\$21,976
Secondary Breakfast +.10	\$26,949
Secondary Lunch +.10	\$43,207
Total	\$99,928



Why

The additional funds will be put directly into Employee Wages.

Budget request to adjust starting wage.

Future

2019 Federal Audit

Universal Free Breakfast 2019-2020 :
Rivera, Hodge, Ginnings and Borman

Increased Participation at Secondary Schools

ID badge project

Menu Development to match our equipment

Year 2 of summer feeding