

Status of Bond Projects  
11/16/10 Board Meeting

President Grant, Board Members, Dr. Balentine,

Current Project Update:

**I. HEALTH, SAFETY, AND SECURITY**

A. Facility Support Services Center: Construction is 35% complete. Utility connections and steel frame erection is complete. Metal sheathing and interior framing is under way. Interior and exterior MPE (mechanical, plumbing, and electrical) is ongoing. The new FSS drive is complete and is being used as a construction drive for the site. This project is on schedule and on budget.



underground electric



underground electric



Steel frame erection, interior framing,  
and MPE preparation



new FSS drive preparation

B. El Hogar / Land Lab: Procurement of the final phase of the security fence is under way.

## **II. INSTRUCTIONAL SPACE / PORTABLE REPLACEMENT**

A. Ironwood Ridge High School Classroom Addition: Construction is 98% complete. The classrooms are in use. The certificate of occupancy was received October 28<sup>th</sup> and the move to the new classrooms followed on October 29<sup>th</sup> and 30<sup>th</sup>. The first day of classes was Nov. 1<sup>st</sup>.

Exterior fencing is being completed and punch list corrections are being made.

This project was delivered on schedule and under budget. Final budget figures are being calculated now and will be reported at January's governing board meeting.



Northeast elevation



Northwest elevation

B. Coronado K-8 Classroom, Kitchen, and Fine Arts Addition / Remodel: Construction is 66% complete.

Fine arts and classroom building are dried in. Interior MPE and drywall are complete. Ceiling grid, casework, and flooring are being installed.

New kitchen is dried in. Interior MPE and drywall installation is in process. Kitchen equipment installation will be started in late November.

New IT equipment installation and phone PBX relocation was completed during intersession break. The new MDF and IDF's are in use.

Phase 3 construction – the remodel of the existing kitchen and the small gym restrooms and the install of the new fire alarm will begin after January 1, 2011.

Portables will be removed during summer break 2011.

This project is currently on schedule and on budget.





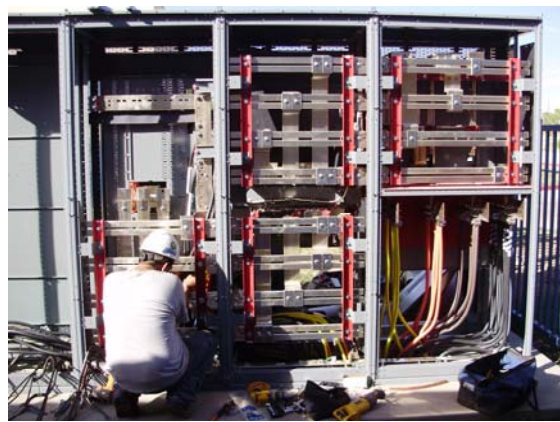
new classroom courtyard



new classroom MPE and drywall



new kitchen MPE and drywall



new electrical switch gear



New main IT server



Relocated phone PBX

C. Rillito Center Addition: Construction is 7% complete.

The 400 and 500 sections have completed footers, stem walls, underground utilities, and slab on grade.

The 100, 200, 300, and 600 sections have completed footers and stem walls and are being prepped for underground utilities.

The relocation plan for the TEP mainline is in place.

The bond department is working with Amphi Technology Dept. to coordinate the recabling of the existing campus during bond related construction.

This project is on budget and the baseline schedule is being reworked to account for the TEP mainline relocation.



Footers, stem walls, and MPE preparation

D. CDO Theater Updates: Construction is 36% complete.

Electrical rough-in work is continuing.

Structural and concrete work is nearly completed.

Interior framing in the lobby is complete.

Painting of the lobby and auditorium is in process.

This project is on schedule and on budget.



Auditorium



New wheelchair ramp to stage

E. Nash Elementary Classroom Addition: Programming of the classroom addition at Nash Elementary is continuing. Design development drawings are complete.

Construction documents are due to the district December 16<sup>th</sup>. Permitting and final pricing for a construction contract will take place at that time.

F. Walker Elementary Classroom Addition: Programming of the classroom addition and kitchen remodel at Walker Elementary is continuing. Design development drawings are complete and are being reviewed by Amphi facility support personnel for accuracy. Price refinement is ongoing.