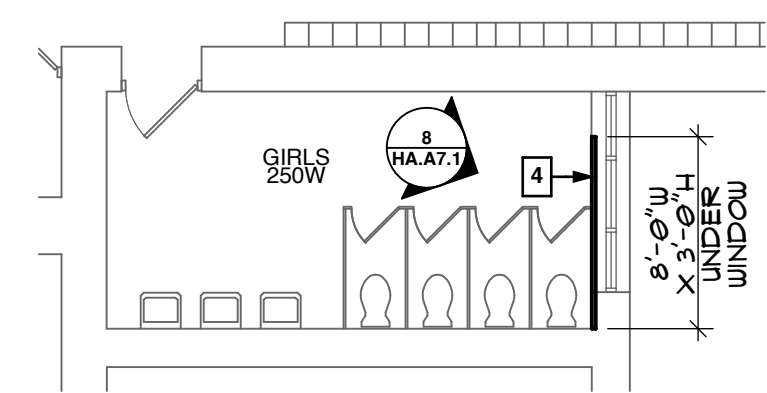


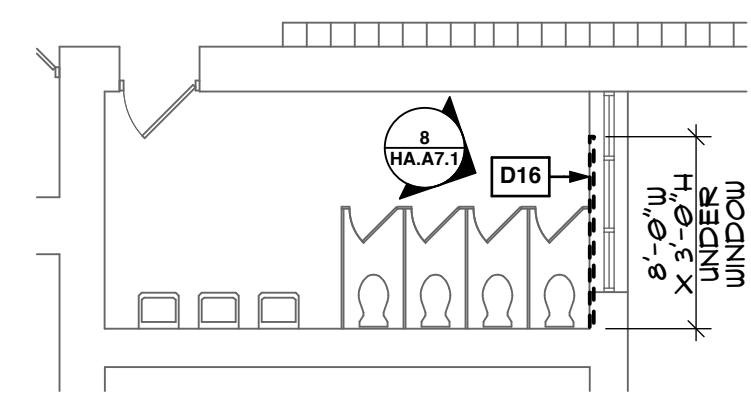
8 GIRLS 250W PHOTO ELEVATIONS
 SCALE: N.T.S.



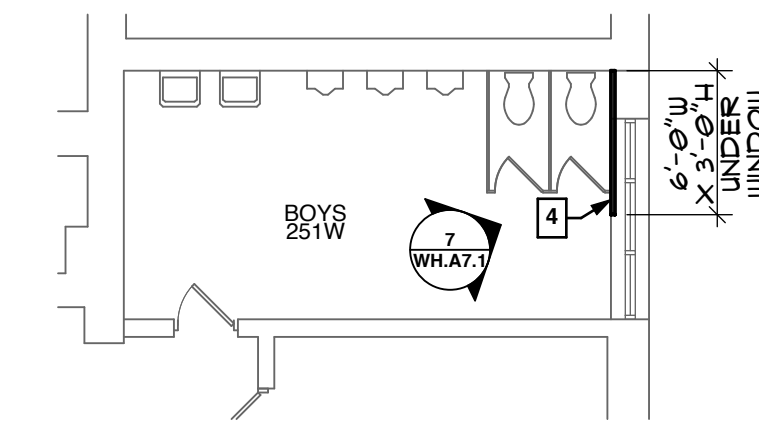
7 BOYS 251W PHOTO ELEVATIONS
 SCALE: N.T.S.



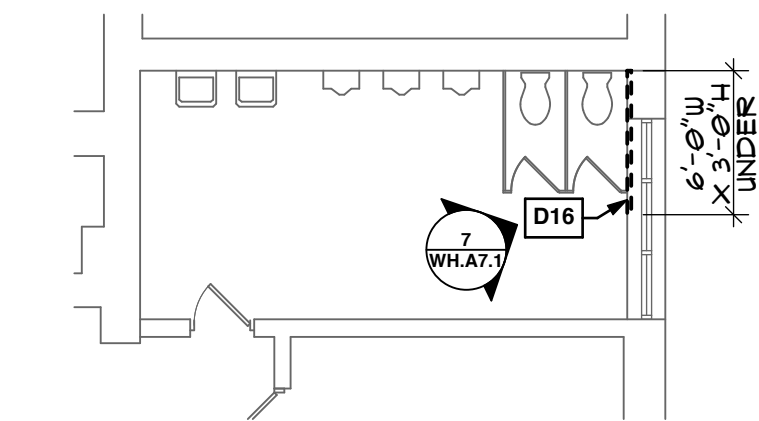
6 GIRLS 250W ENLARGED PLAN
 SCALE: 1/8" = 1'-0"



5 GIRLS 250W DEMO PLAN
 SCALE: 1/8" = 1'-0"



4 BOYS 251W ENLARGED PLAN
 SCALE: 1/8" = 1'-0"



3 BOYS 251W DEMO PLAN
 SCALE: 1/8" = 1'-0"

KEY PLAN

SCOPE DOCUMENT

This drawing is one drawing within a complete set of documents and shall not be considered separately from the Drawings as a whole. The Drawings indicate the general scope of the project in terms of architectural design concept, the dimensions of the building, the major architectural elements and the type of structural, mechanical, and electrical systems. As Scope Documents, the Drawings do not necessarily indicate or describe all work required for full performance and completion of the requirements of the Construction Documents. On the basis of the general scope indicated or described, the Contractor shall furnish all items required for the proper execution and completion of the Work.

Copyright Notice, Copyright © 2017 STR PARTNERS LLC. The information in this document is the intellectual property of STR Partners LLC. It is intended solely for use by the "Client" during only this specific project. Reproduction of any portion of this document for any purpose other than for its intended use is not permitted without specific written permission of STR Partners LLC.

PROJECT
2018 LIFE SAFETY WORK
 OAK PARK, IL 60302

OAK PARK ELEMENTARY SCHOOL DISTRICT 97
 260 W. Madison Street
 Oak Park, IL 60302

CLIENT PROJECT NUMBER

STR PROJECT NUMBER
17052

DRAWING DATES

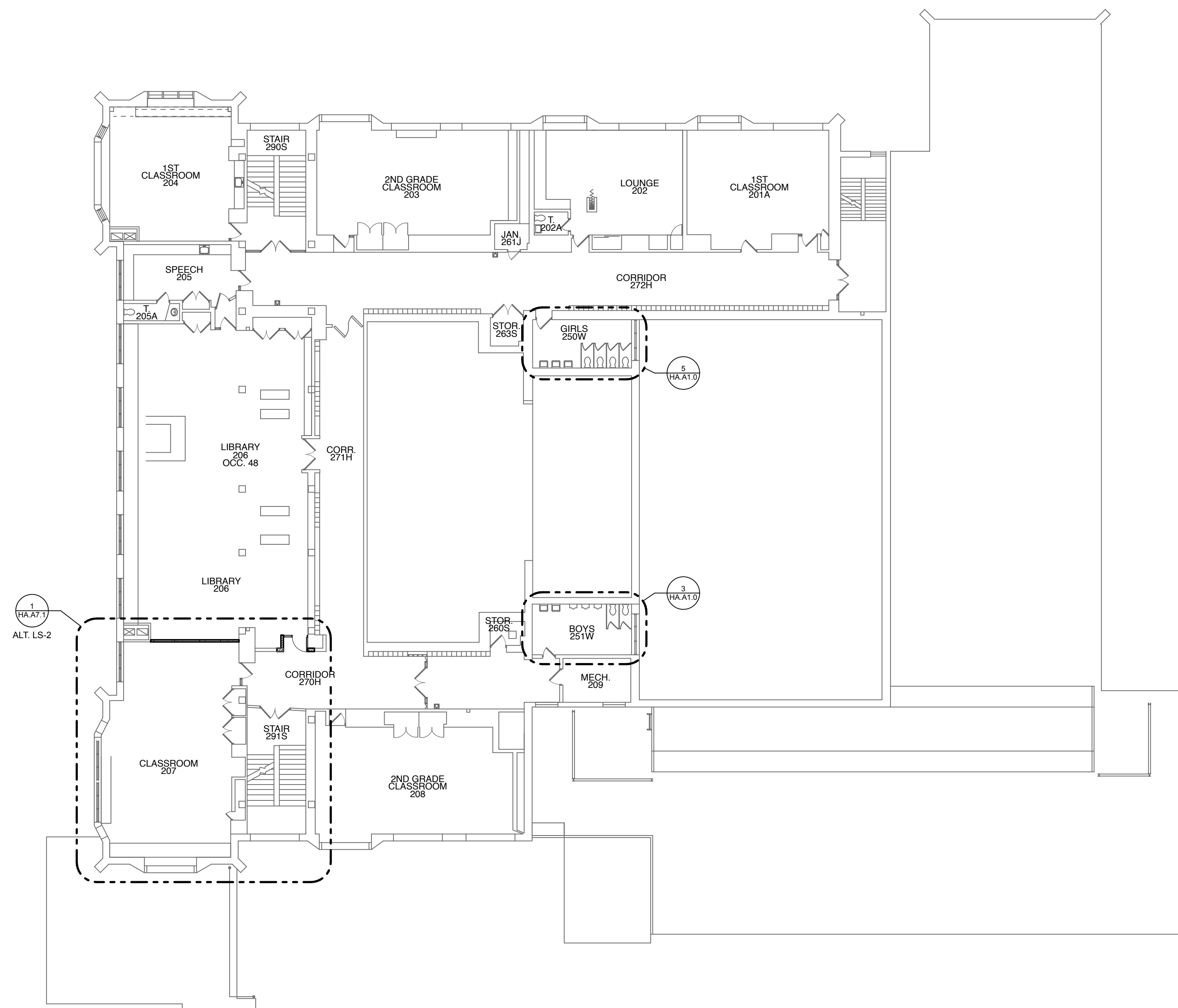
NUMBER	DATE	COMMENTS
3	1/15/18	ISSUED FOR BID
2	12/5/17	75% CD REVIEW
1	11/1/17	60% CD REVIEW

DRAWING TITLE

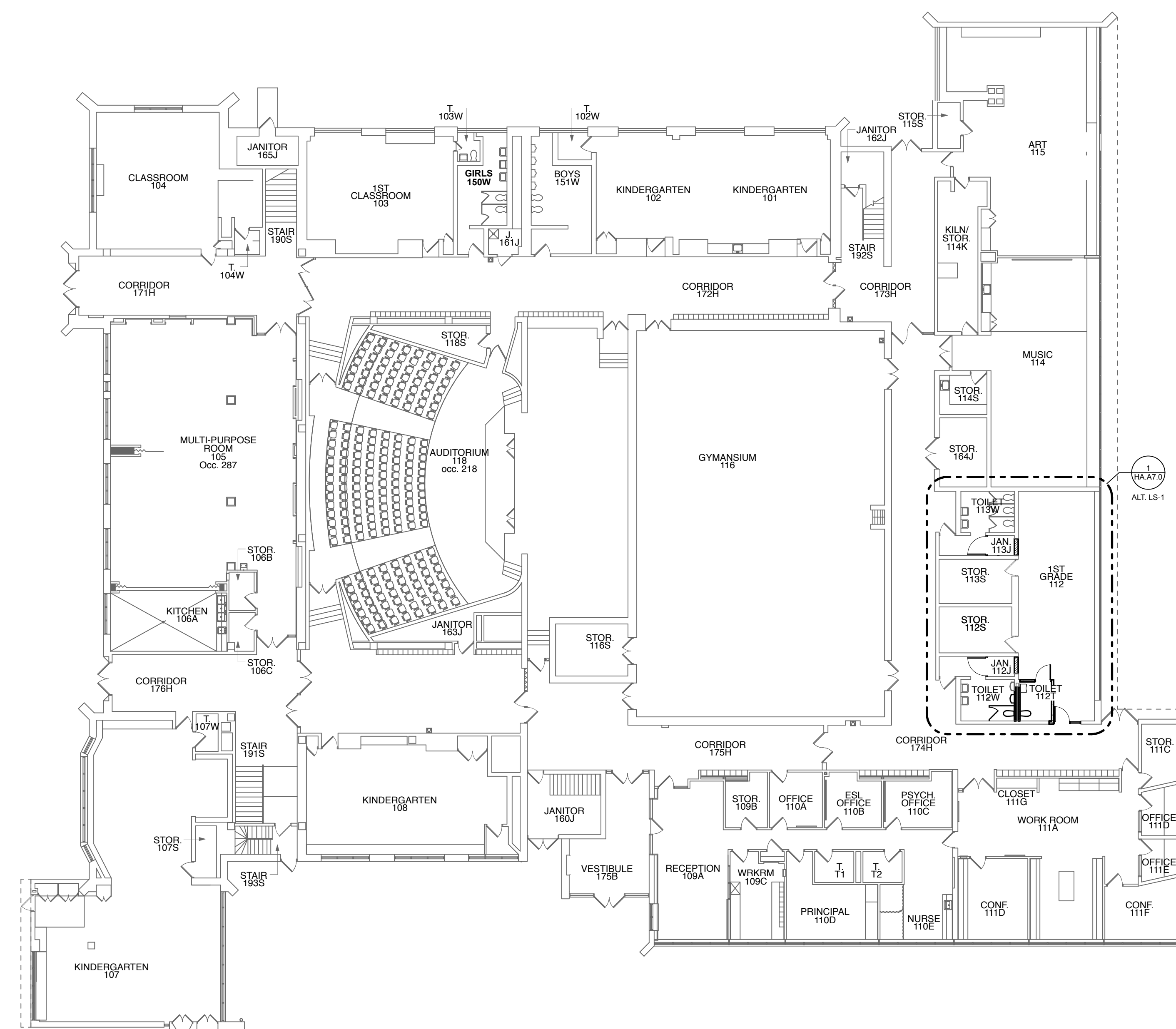
HATCH - FIRST & SECOND FLOOR PLANS

SHEET NUMBER

HA.A1.0



2 HATCH - SECOND FLOOR PLAN
 SCALE: 1/16" = 1'-0"



1 HATCH - FIRST FLOOR PLAN
 SCALE: 1/16" = 1'-0"