

The Charger Wire

September 1st, 2025

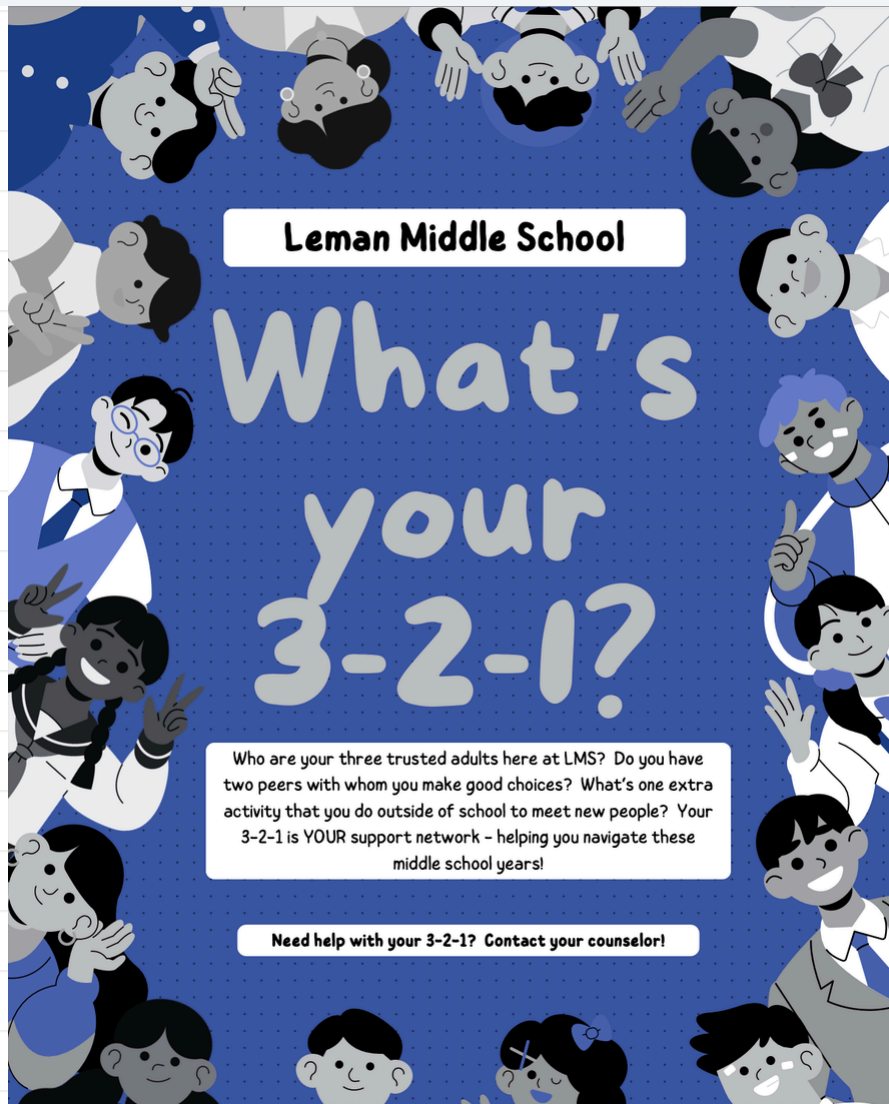
Notes from Administration

We are off to a great start at LMS! We are so excited to begin a new year, and now in my fifth year as principal at Leman, this has been my favorite first week of school ever! I cannot describe how much joy the first day brings for our staff as we reunite with our students. We are grateful for the opportunity to educate your child.



In the coming months, if there is anything that we can do to support your child here at Leman, please do not hesitate to reach out to me or my team. We are working every day to ensure that your child feels safe, loved, and empowered at school so that our students can achieve their very best! We appreciate your partnership and support.

Sincerely,
Maggie Lay
Principal



Establishing a 3-2-1: Building School Connectedness from the Start!

Leman Middle School believes that all students should establish a 3-2-1. What's a 3-2-1? It's a support network for students to help them feel connected to their school community. Throughout the year, students will be asked to share their 3-2-1, which consists of:

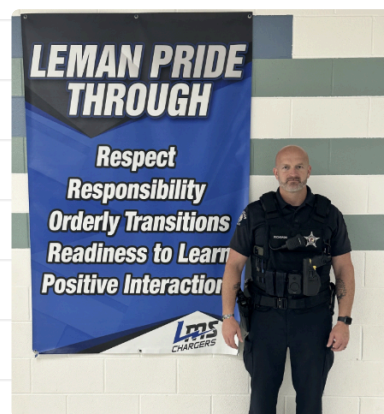
- 3 Trusted Adults that they can go to if they need help,
- 2 Positive Peers with whom they make good choices, and
- 1 Extra-curricular activity that keeps them engaged outside of school.

Helping your child pick an extracurricular activity is an important way that parents can support a child's 3-2-1. We have a wide variety of clubs, sports, and activities at LMS in which your child can get involved. Consider, too, ways to be involved in the community such as through park district activities, church classes or organizations, community service groups, or private/club sports! Involvement in activities and connectedness to groups can help keep our students on the right path and prepare them for high school.



People You Should Know: SRO Chris Richards

Officer Richards has joined the Leman Middle School team this year as our School Resource Officer. From monitoring school safety to building relationships with our students and families, Officer Richards is a friendly face that students will see all over the building!



Coaches' Corner

Your child will take the MAP Growth test from NWEA on the computer during the week of September 2nd. Students take the MAP test three times a year to measure academic growth over time. MAP Growth scores help teachers evaluate student performance by measuring achievement and growth.

MAP Growth tests adapt to your child's responses to measure your child's skill level. If your child answers a question correctly, the next question is more challenging. If they answer incorrectly, the next one is easier. These results will provide a more complete picture of what your child knows and is ready to learn—whether it is on, above, or below their grade level.

Since MAP Growth tests provide immediate and accurate information about your child's learning, it's easy for teachers to identify students with similar scores who are generally ready for instruction in similar skills and topics, and then plan instruction accordingly.

Your student and their teachers worked together to create goals before testing. Students are tracking their progress and determining if they met their goals. Ask your student if they met their goals on their Reading and Math MAP test. If they met their goal, ask them how they were able to achieve their goal. If they did not meet their goal, ask them what they are working on to meet their goal on the next MAP test.

MAP Growth reports also provide typical growth data for students who are in the same grade, subject and have the same starting performance level. You will receive a Progress report showing a summary of how your child is performing academically at Parent Teacher Conferences. For more information on reading your student's MAP Progress report click [here](#) for a sample report in English and Spanish.

Please talk to your students about the importance of testing and always doing their best.

Thank you, LMS Coaches

Visit our school calendar by clicking here!

Follow us on Facebook!

Leman Midde School is active on Facebook and Instagram. Give us a like and a follow!



LMS Administration

www.wego33.org

If you have any questions or concerns, please don't hesitate to contact us. You can reach out at any time via Parent Square!

Administrative Team

6th Grade: Matt Mordini (AP) and Brittany Grzesik (Dean)

7th Grade: Roxann Hunsaker (AP) and Stephen Rogers (Dean)

8th Grade: Hannah Christie (AP) and Adam Hague (Dean)

Principal: Maggie Lay