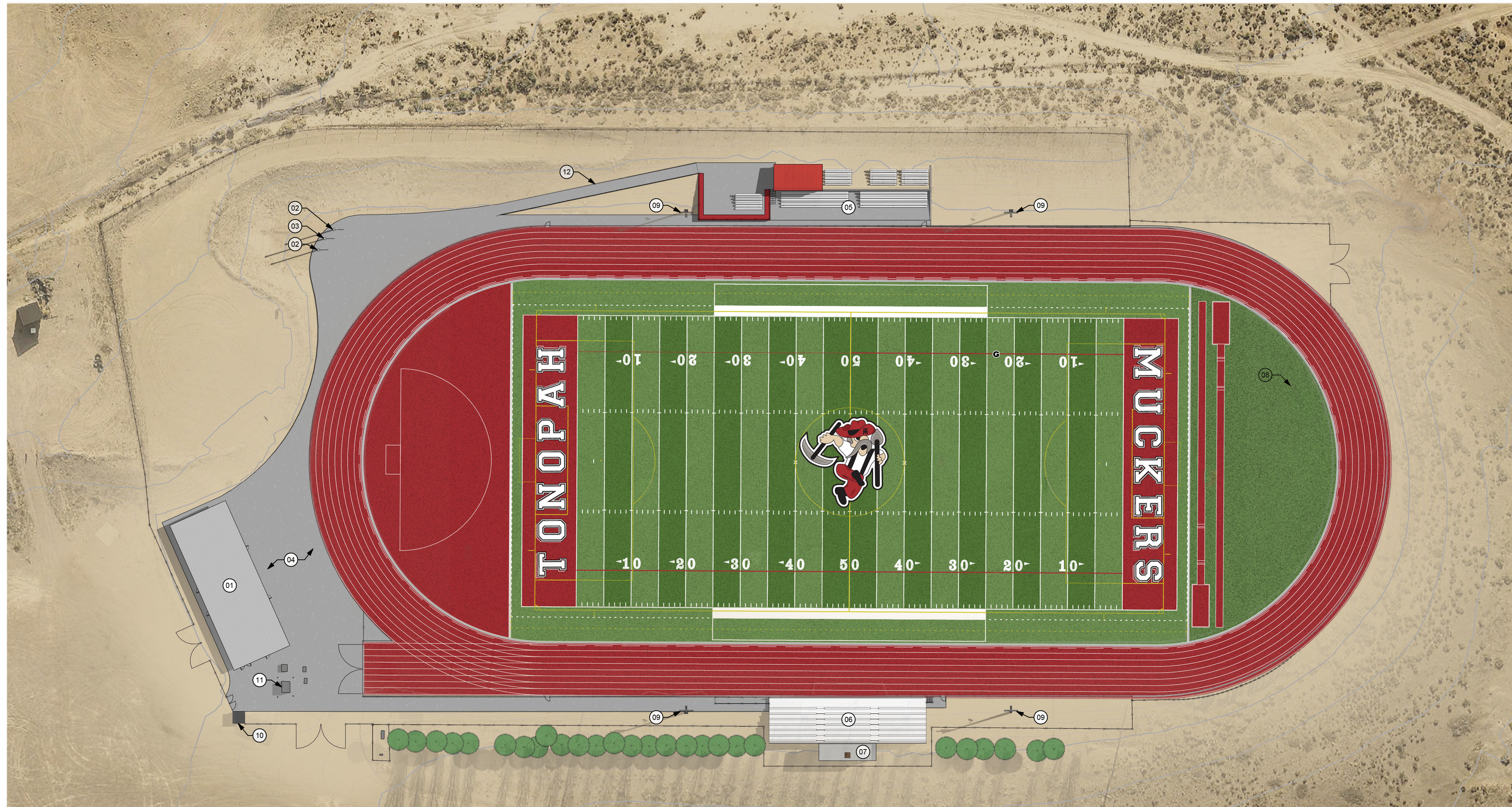


KNIT

7250 Peak Drive,
Suite 216
Las Vegas, NV
89128
P 702.363.2222
KnitStudios.com



KEYNOTES

01	RESTROOM AND CONCESSIONS BUILDING
02	35'-0" FLAGPOLE
03	45'-0" FLAGPOLE
04	CONCRETE PAVING / SIDEWALK
05	EXISTING AWAY TEAM BLEACHERS, 500 CAPACITY
06	HOME TEAM BLEACHERS, 346 CAPACITY
07	PRESS BOX
08	SCOREBOARD
09	50'-0" SPORT LIGHT
10	TICKET BOOTH
11	EXISTING UTILITIES
12	ADA RAMP

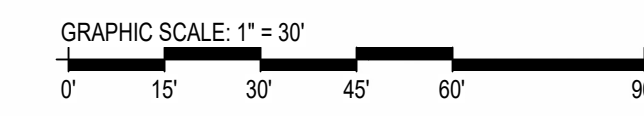
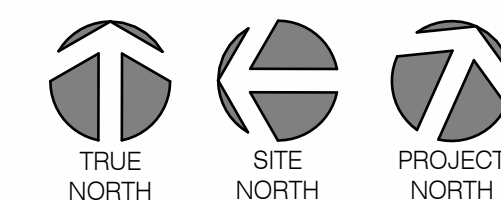
SITE DATA

ADDRESS:	170 E RAY TENNANT LANE TONOPAH, NV 89049
APN:	008-471-01
JURISDICTION:	NYE COUNTY
ZONING:	400 - GENERAL COMMERCIAL
LOT SIZE:	AREA
ACREAGE	60 ACRE
SQUARE FOOTAGE	2,613,600 SF
SETBACKS:	N/A
BUILDING COVERAGE:	AREA
PROVIDED	2860 SF % 0.12
LANDSCAPE COVERAGE:	AREA
PROVIDED	EXISTING
PARKING:	EXISTING TO REMAIN

VICINITY MAP



PROJECT LOCATION



OVERALL SITE PLAN
1" = 30'-0"

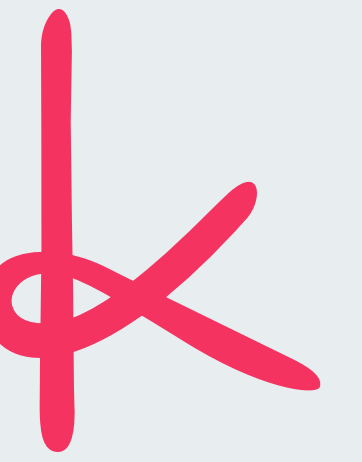
**THS Sports Field
Replacement
Nye County
School District**

170 E Ray Tennant Ln
Tonopah, NV 89049

KNIT PROJECT #:
240041

KEYNOTES

01	RESTROOM AND CONCESSIONS BUILDING
02	35'-0" FLAGPOLE
03	45'-0" FLAGPOLE
04	CONCRETE PAVING / SIDEWALK
05	EXISTING AWAY TEAM BLEACHERS, 500 CAPACITY
06	HOME TEAM BLEACHERS, 346 CAPACITY
07	PRESS BOX
08	SCOREBOARD
09	50'-0" SPORT LIGHT
10	TICKET BOOTH
11	EXISTING UTILITIES
12	ADA RAMP



KNIT

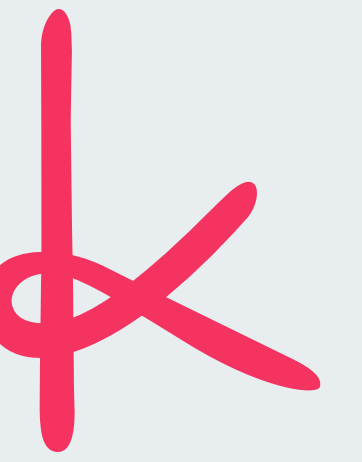
7250 Peak Drive,
Suite 216
Las Vegas, NV
89128
P 702.363.2222
KnitStudios.com



THS Sports Field
Replacement
Nye County
School District

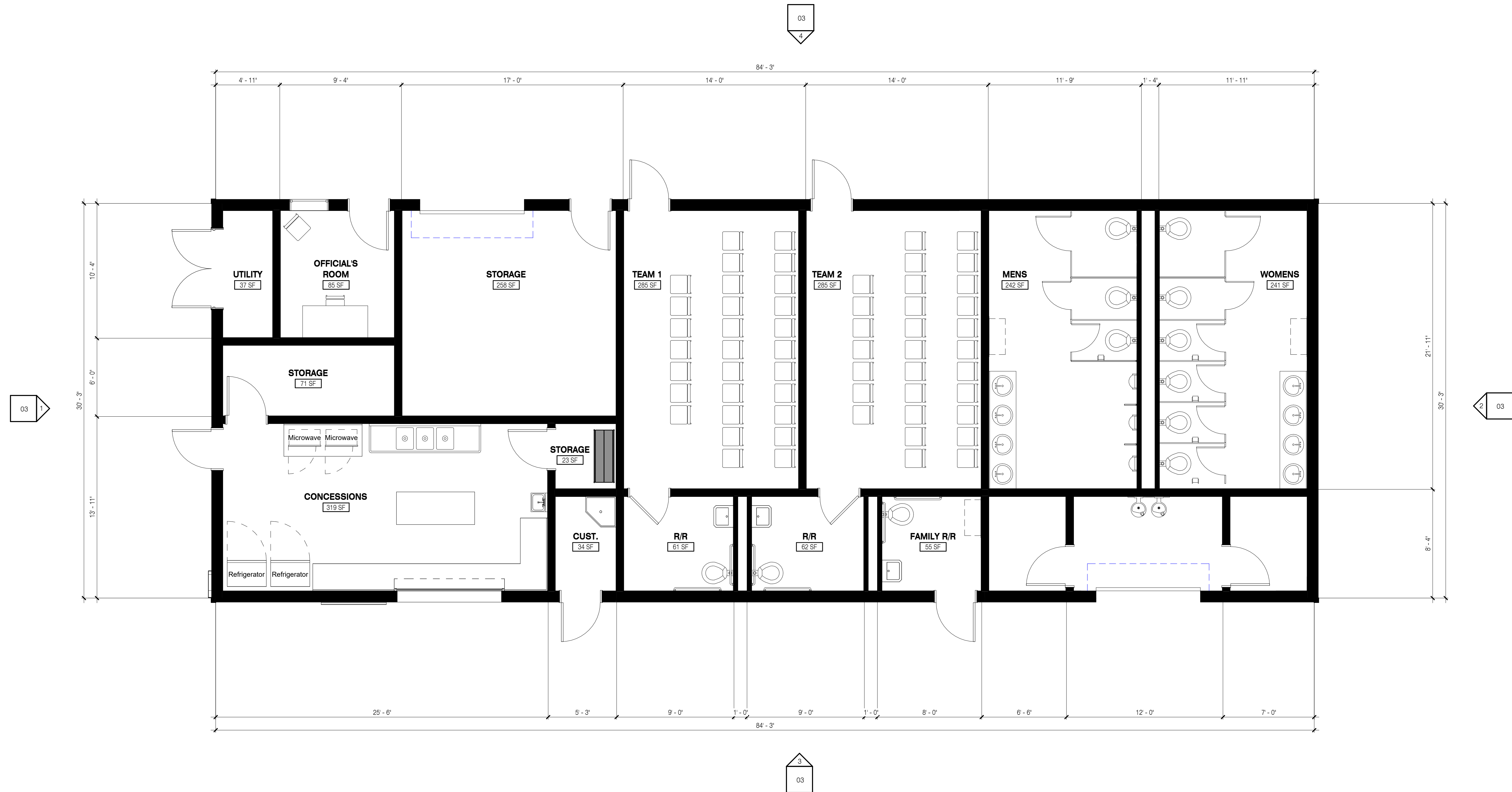
170 E Ray Tenant Ln
Tonopah, NV 89049

KNIT PROJECT #:
240041



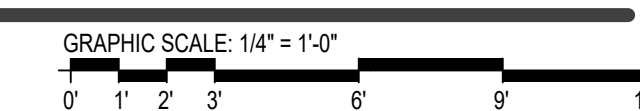
KNIT

7250 Peak Drive,
Suite 216
Las Vegas, NV
89128
P 702.363.2222
KnitStudios.com



CONCESSIONS FLOOR PLAN

1/4" = 1'-0"



**THS Sports Field
Replacement
Nye County
School District**

170 E Ray Tenant Ln
Tonopah, NV 89049

KNIT PROJECT #:
240041

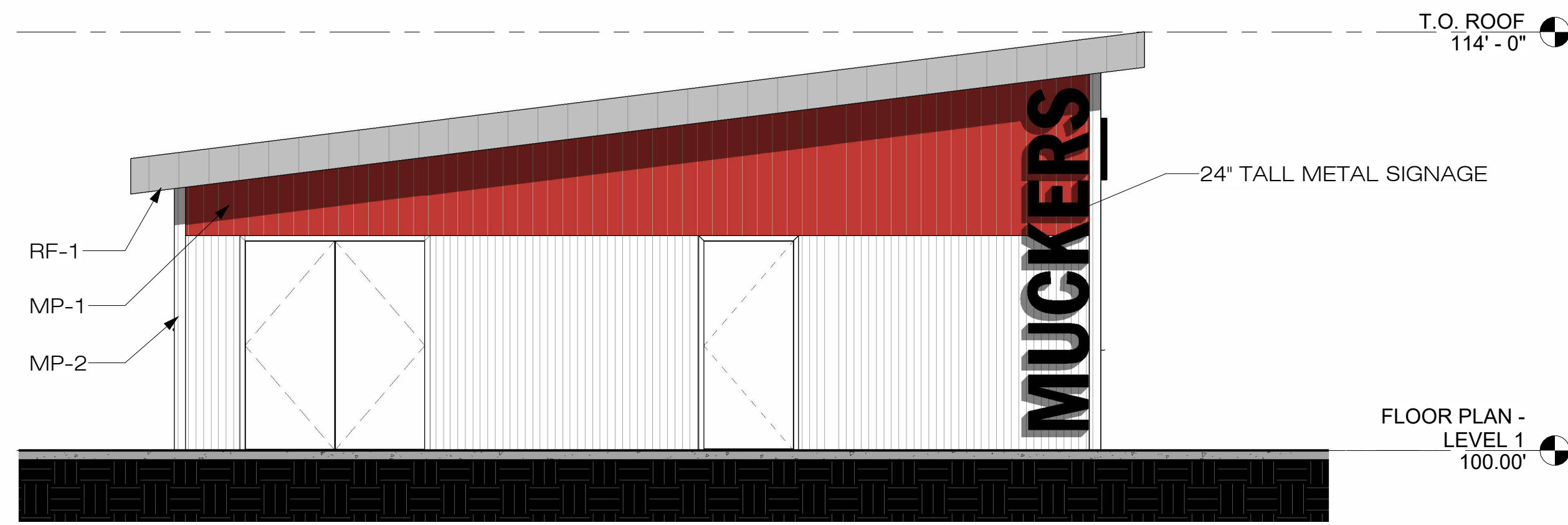
EXTERIOR FINISH MATERIAL LIST

METAL PANEL	SCARLET RED
MP-1	POLAR WHITE
MP-2	ASH GRAY
RF-1	

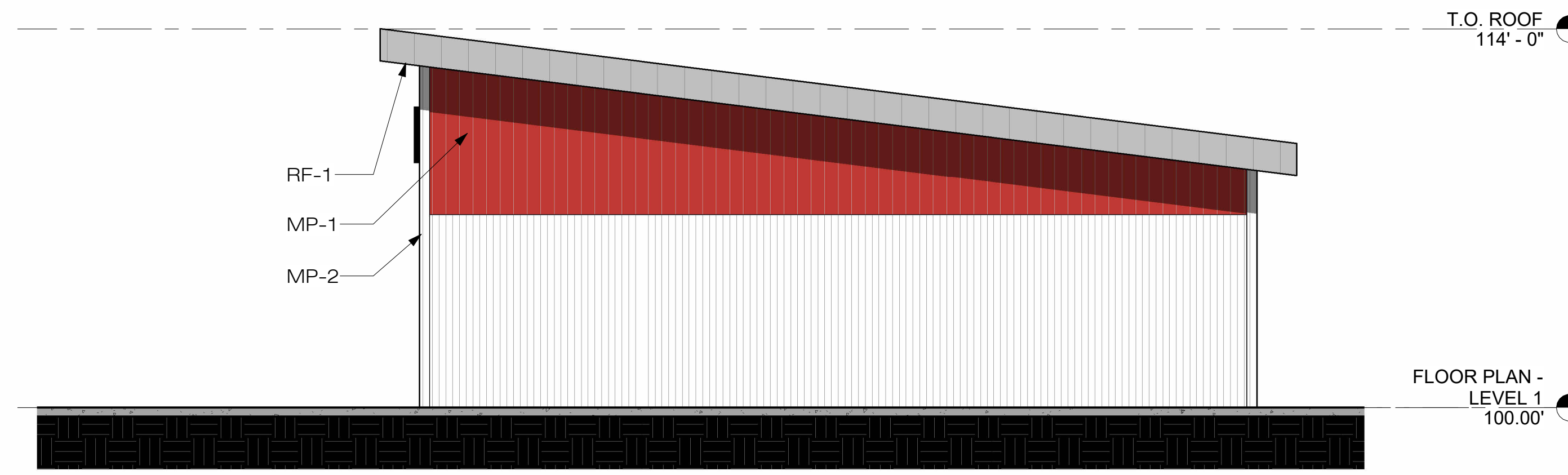


KNIT

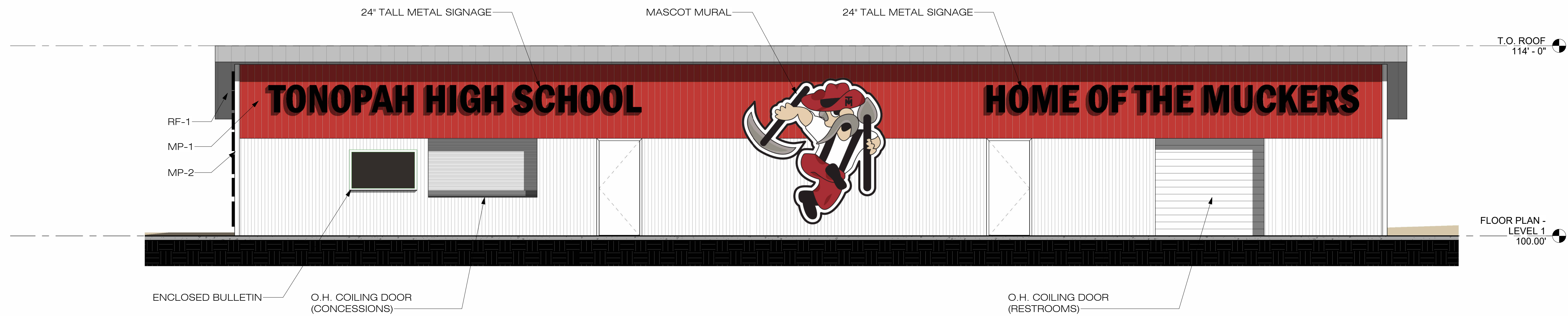
7250 Peak Drive,
Suite 216
Las Vegas, NV
89128
P 702.363.2222
KnitStudios.com



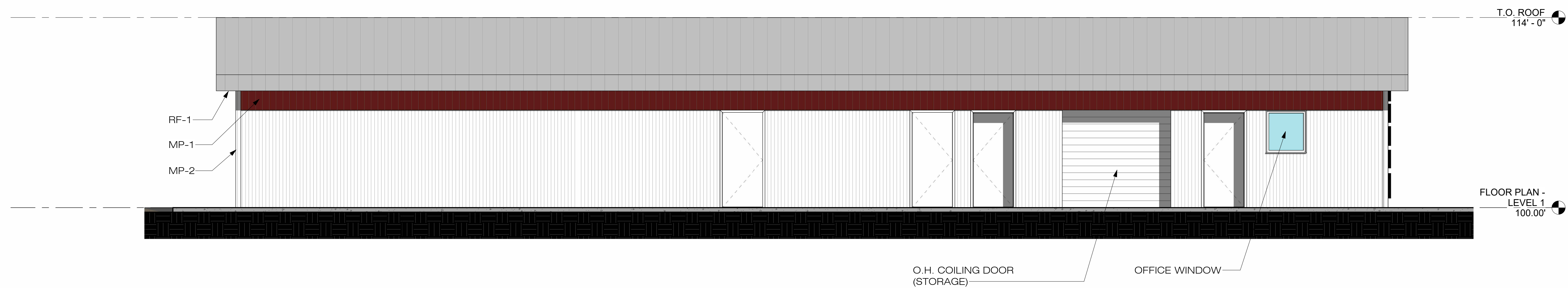
1 CONCESSIONS - W ELEVATION
1/4" = 1'-0"



2 CONCESSIONS - E ELEVATION
1/4" = 1'-0"



3 CONCESSIONS - S ELEVATION
1/4" = 1'-0"



4 CONCESSIONS - N ELEVATION
1/4" = 1'-0"

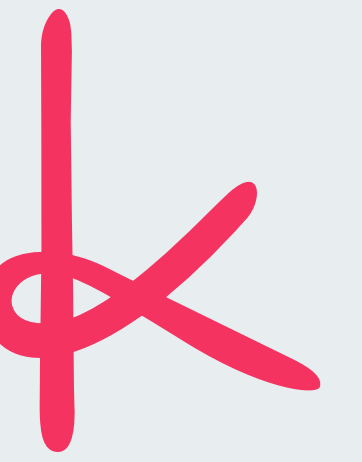
THS Sports Field
Replacement
Nye County
School District

170 E Ray Tenant Ln
Tonopah, NV 89049

KNIT PROJECT #:
240041

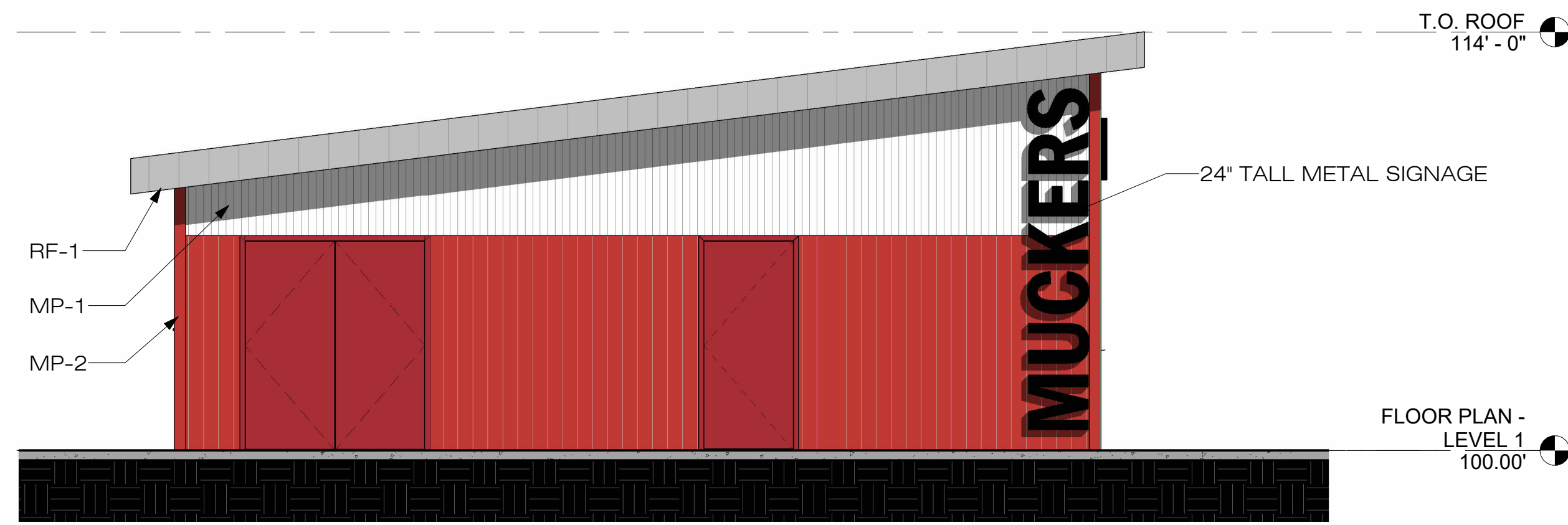
EXTERIOR FINISH MATERIAL LIST

METAL PANEL	SCARLET RED
MP-1	POLAR WHITE
MP-2	ASH GRAY
RF-1	

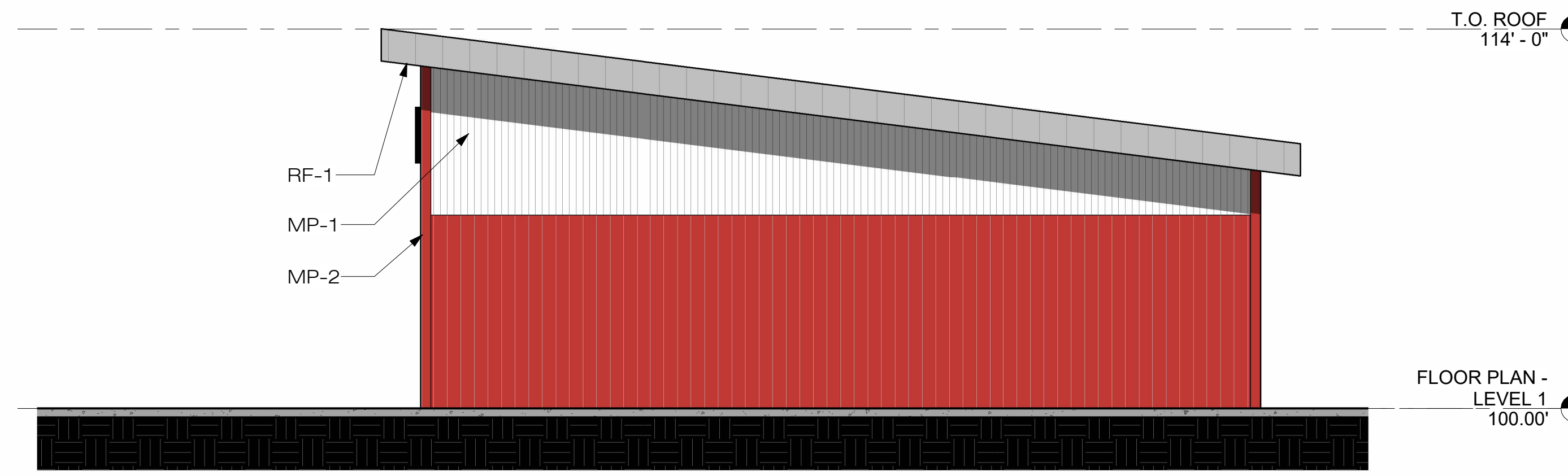


KNIT

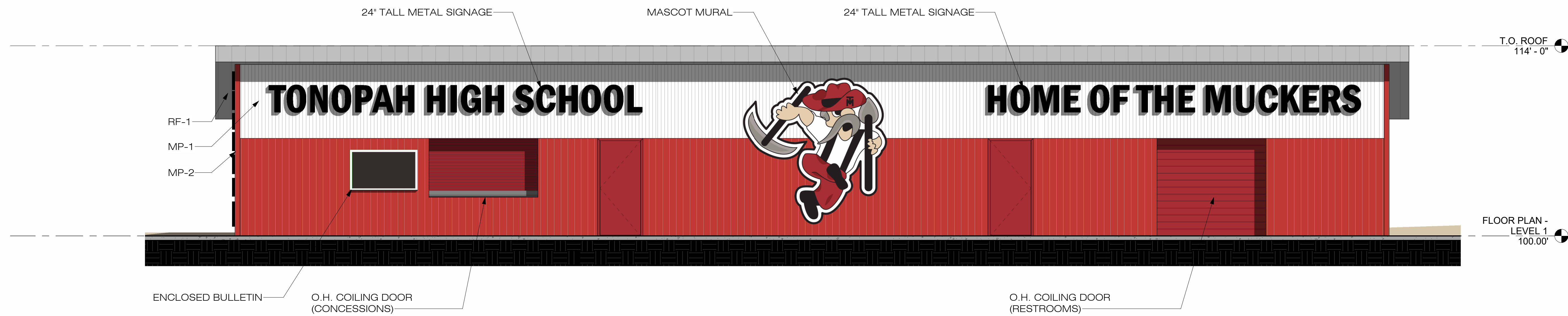
7250 Peak Drive,
Suite 216
Las Vegas, NV
89128
P 702.363.2222
KnitStudios.com



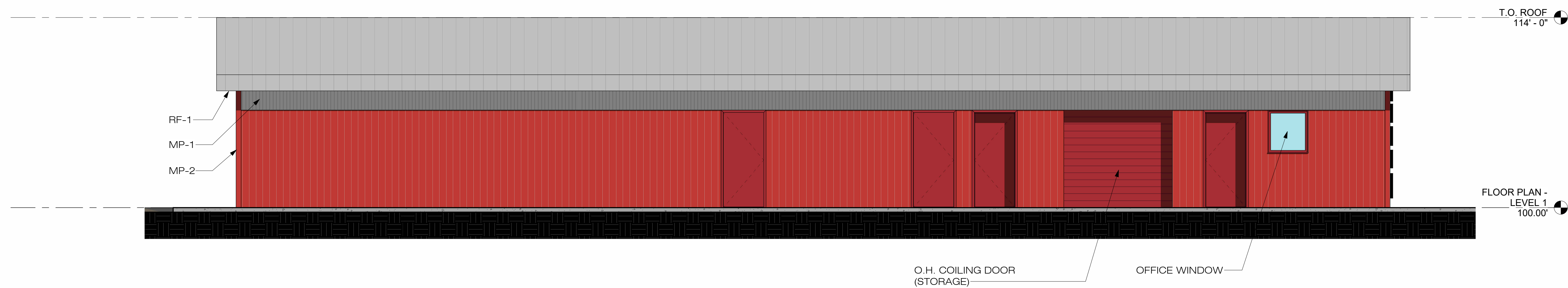
1 CONCESSIONS - W ELEVATION
1/4" = 1'-0"



2 CONCESSIONS - E ELEVATION
1/4" = 1'-0"



3 CONCESSIONS - S ELEVATION
1/4" = 1'-0"



4 CONCESSIONS - N ELEVATION
1/4" = 1'-0"

THS Sports Field
Replacement
Nye County
School District

170 E Ray Tenant Ln
Tonopah, NV 89049

KNIT PROJECT #:
240041