

No. _____



UNITED INDEPENDENT SCHOOL DISTRICT AGENDA ACTION ITEM

TOPIC: PROPOSED ELEMENTARY BOUNDARY CHANGES FOR 2010-2011

SUBMITTED BY: MIKE GARZA **OF:** EXECUTIVE DIRECTOR OF SUPPORT SERVICES

APPROVED FOR TRANSMITTAL TO SCHOOL BOARD: _____

DATE ASSIGNED FOR BOARD CONSIDERATION: March 9, 2010

RECOMMENDATION:

Staff recommends the attached proposed boundary changes be approved by that the Board of Trustees to be effective beginning with the 2010-2011 school year.

RATIONALE:

The boundary changes are being proposed to provide efficient use of district facilities. Existing attendance boundaries would create overcrowding at certain facilities while other facilities would be under-utilized.

BUDGETARY INFORMATION

N/A

BOARD POLICY REFERENCE AND COMPLIANCE

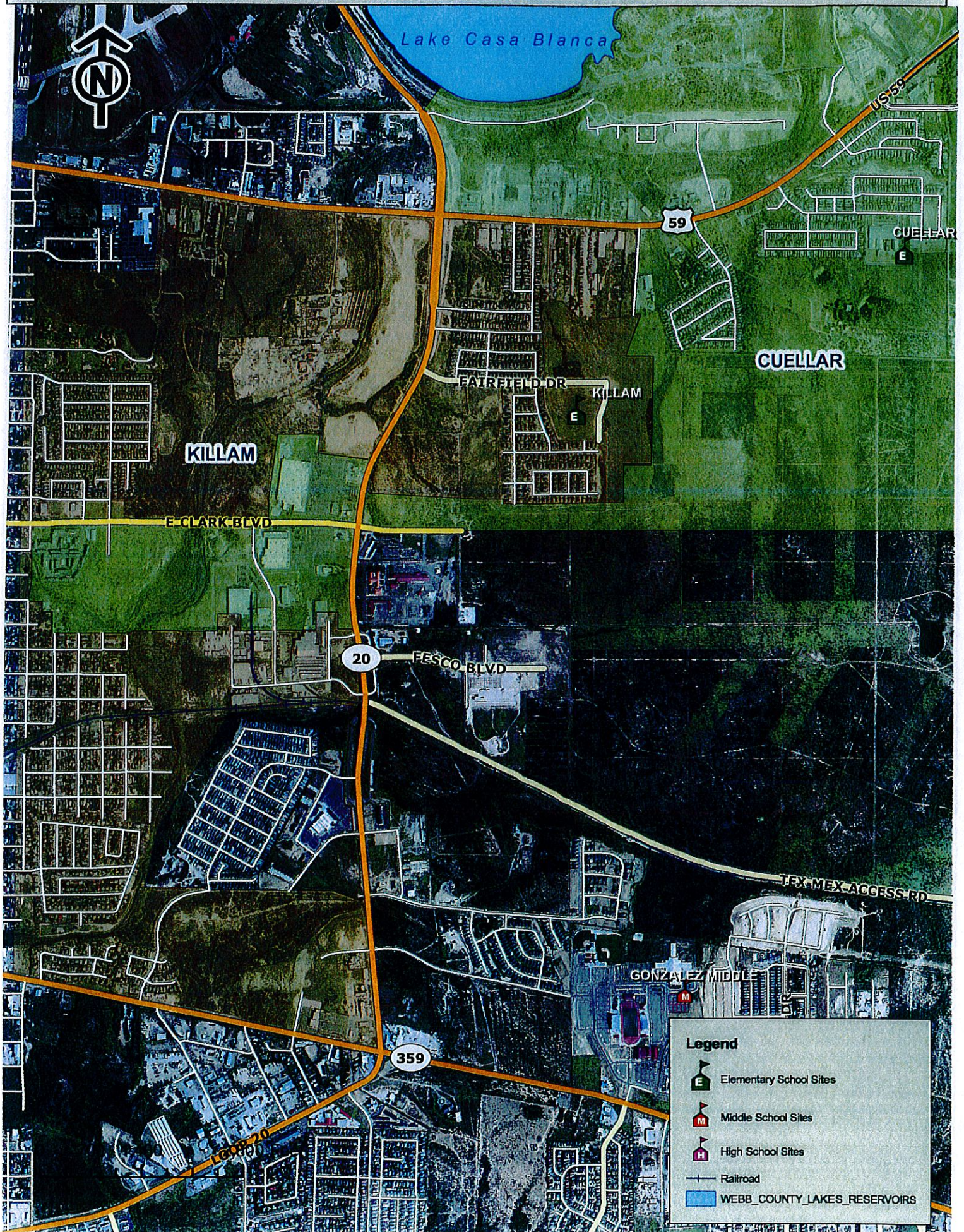
UNITED INDEPENDENT SCHOOL DISTRICT

THE PROPOSED ELEMENTARY SCHOOL ATTENDANCE BOUNDARY FOR 2010-2011

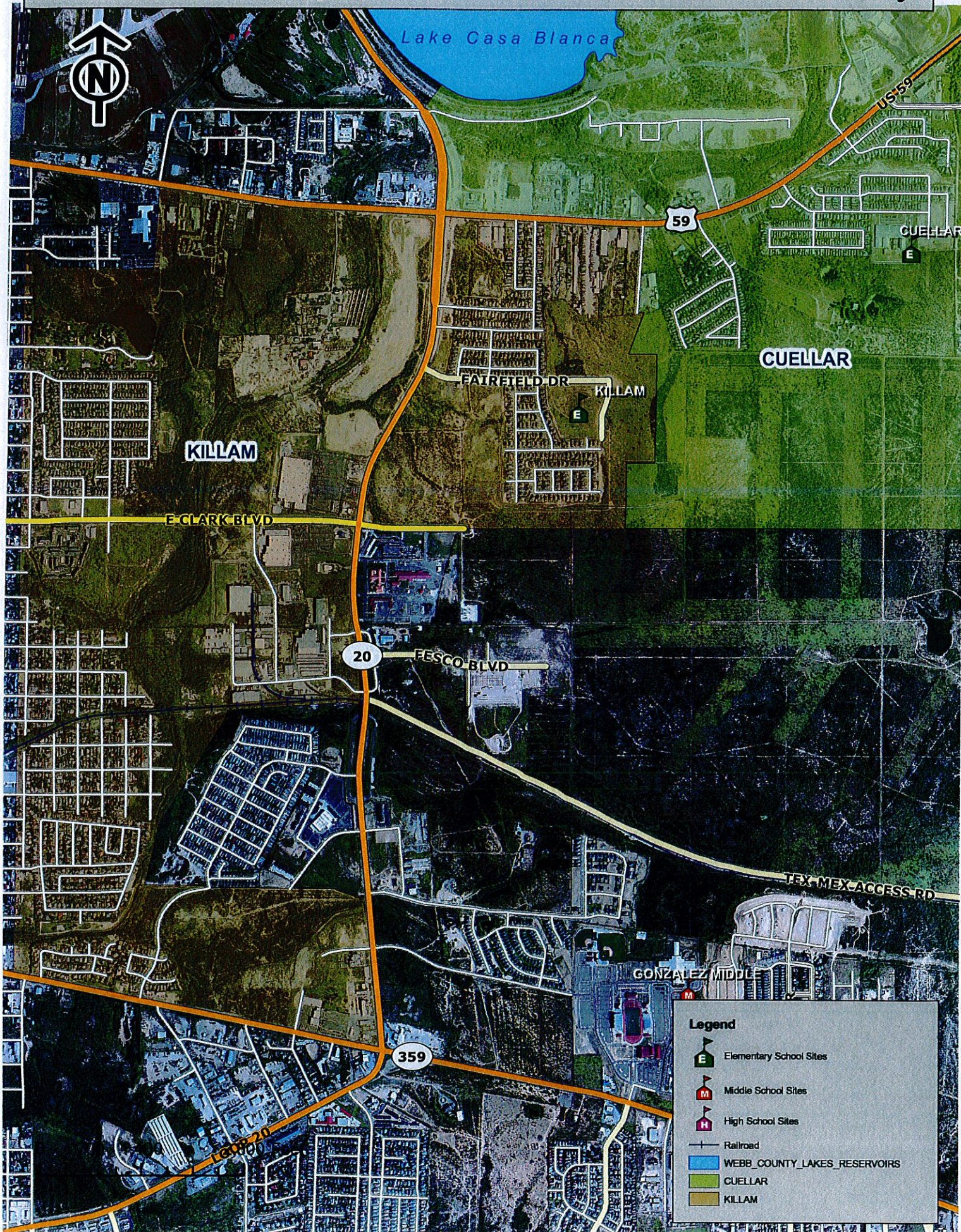
1. Cuellar Elementary School

The boundary starts at the intersection of Loop 20 and Hwy 59. Includes all students residing outside Loop 20 and Hwy 59 except those residing in/and between Towne East and Ponderosa Subdivisions. It includes Clark Crossing Apartments (on Clark Blvd.), Heritage Park and San Jose Subdivisions and all other east on Hwy 59.

Proposed Boundary Change for Killam and Cuellar Elementary



Current Boundary for Killam and Cuellar Elementary



UNITED INDEPENDENT SCHOOL DISTRICT

THE PROPOSED ELEMENTARY SCHOOL ATTENDANCE BOUNDARY FOR 2010-2011

1. Muller Elementary School

The southeast boundary starts on Hwy 35 and FM 3464 to Mines Rd. (FM 1472). North on Mines Rd. to include the Aquero Subdivision (streets included are Aquero Blvd., Bernadette Lane, Toinette St, Jeanne Ct.) and Indian Sunset Subdivision (except for students on Lipan Dr., Lipan Circle 300-500, Houma, Mescalero, Mescalero Circle 200-500 and Arapahoe below 11,700). Boundary continues south along Riverbank Drive to Bob Bullock Loop.

Streets from the Aquero Subdivision to be included
within the Muller Elementary Boundary

(Streets)

Aquero Blvd.

Peyramale Ct.

Bernadette Ln.

Jeanne Ct.

Lourdes Dr.

Toinette St.

Soubirous Rd.

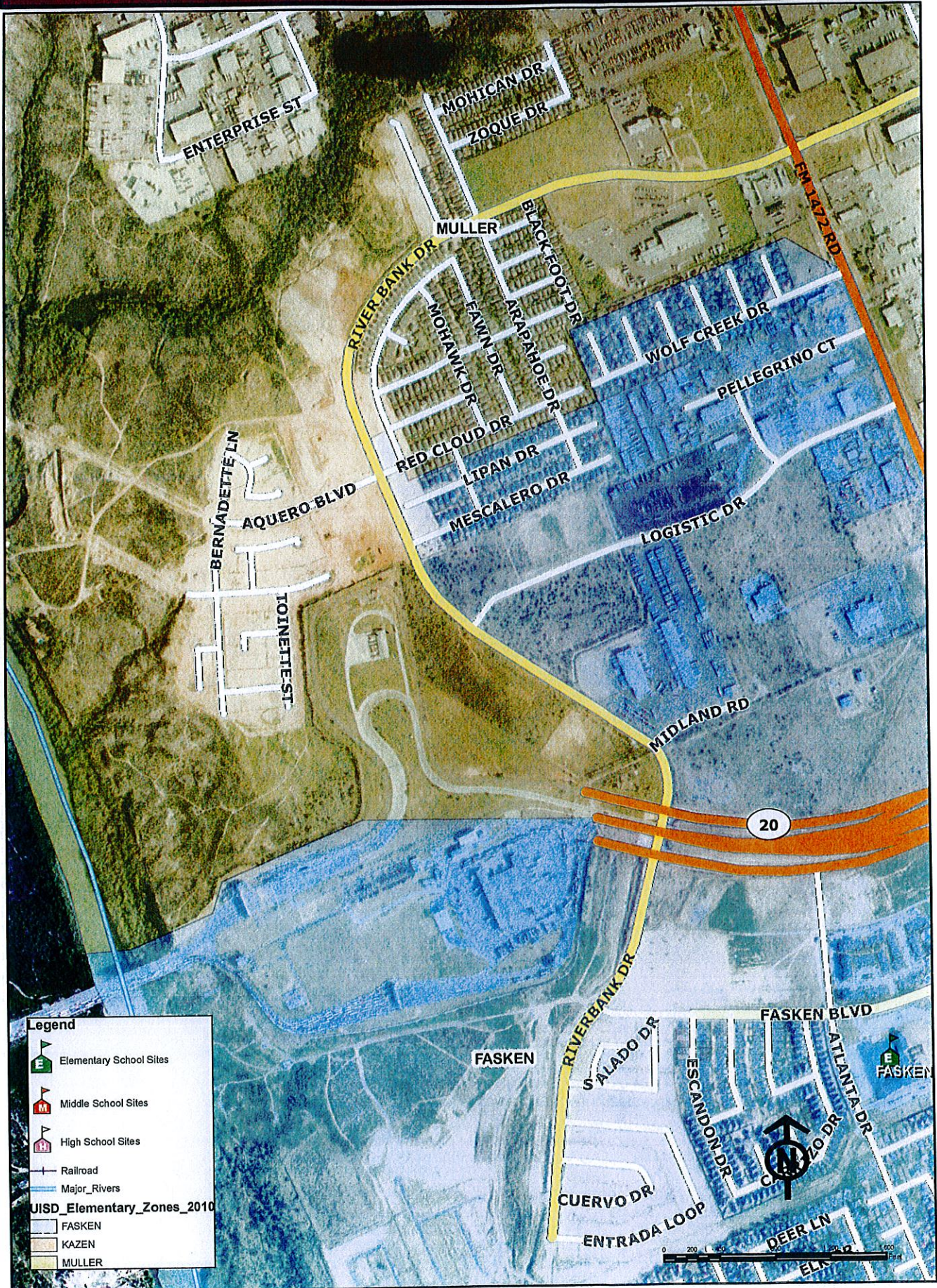
Massabielle St.

Pomian Ct.

Dutour Ct.

Nevers Ct.

Proposed boundary for Muller and Fasken Elementary



Current boundary for Muller and Fasken Elementary

