

Facilities Update

May 19, 2026



Crosby Middle School



Condition

Options

Recommendation

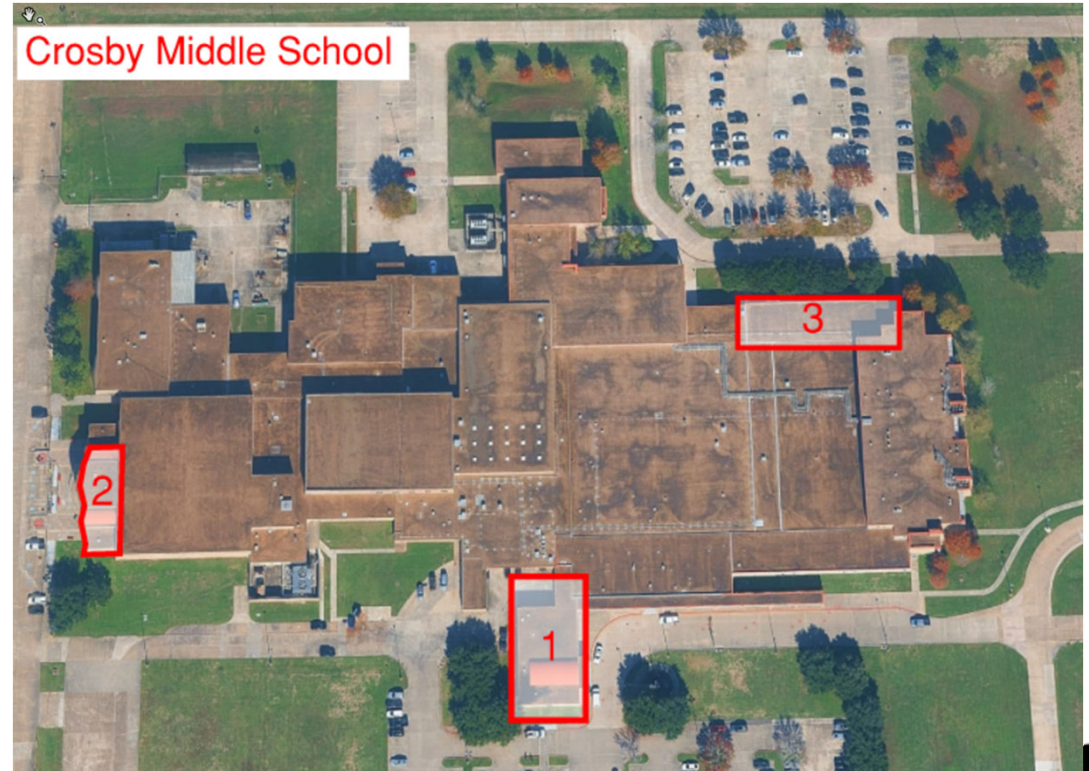


Crosby Middle School Condition



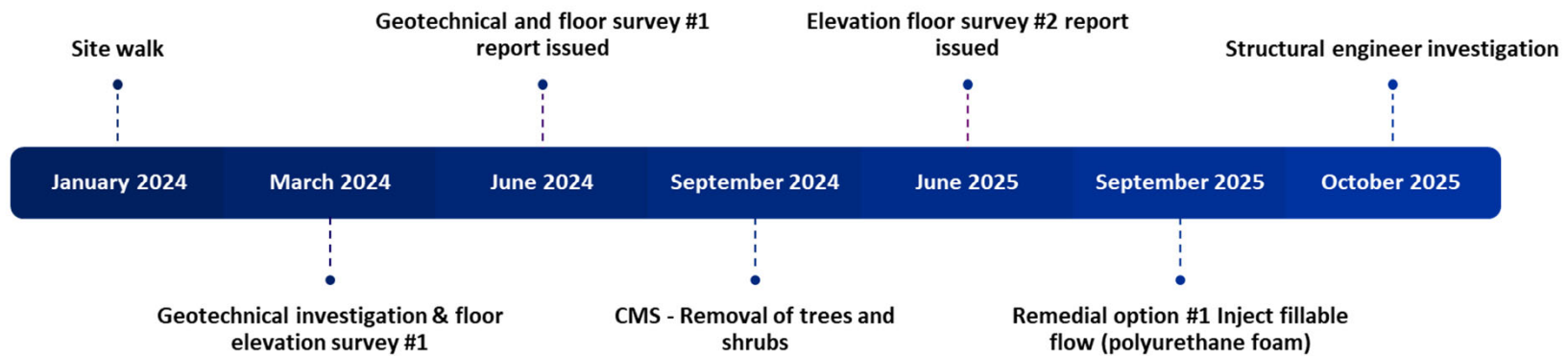
- **Foundation**

- Area 1 – Admin Offices
- Area 2 – Gym Lobby
- Area 3 – Classroom Wing





Crosby Middle School Condition Foundation Timeline

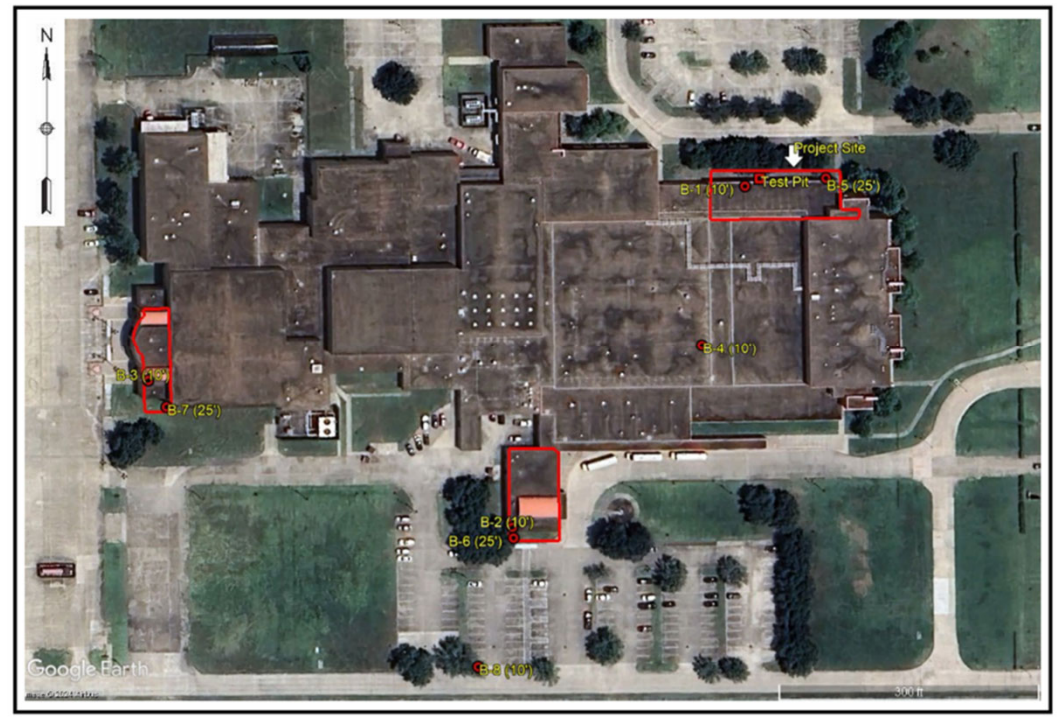


Crosby Middle School Condition Geotechnical Report



- Voids of 4" to 6" found under grade beams
- Low moisture content in soil under slabs
- Cause
 - Trees
 - Drought

BORING LOCATION DIAGRAM



Crosby Middle School Condition Geotechnical Report



Geotechnical Recommendations

1. Removed existing trees within proximity to building
2. Conducted two floor elevation surveys
 - a. First - Summer 2024
 - b. Second - One year after removal of trees, Summer 2025
3. Two remedial options - based on results of second floor elevation survey
 - a. Option 1 - Floor leveling with fillable flow (polyurethane)
 - b. Option 2 - Structural slab replacement

Crosby Middle School Condition Structural Engineer Report



Structural Engineer Recommendations

1. Geotechnical Investigation
2. Employ Mud-Jacking/Foam jacking (polyurethane)
3. Demolish and replace areas of concern

Crosby Middle School Condition



Ongoing Investigations

- Full site elevation survey
- TASB Assessment
- Roofing Assessment
- Full building structural assessment

Crosby Middle School Condition



Other Items of Consideration

- Roof
 - Near end of useful life
- Code upgrades
 - Repairs/Renovations will require updated code compliance
- Red Barn renovations

Crosby Middle School Options



Conduct Repairs

- Cost
 - Funding Source
- Timeline – 14 months

Repairs	Current Cost Estimate
Demo and Rebuild – Foundation	• \$8,666,003 - \$10,826,663
Roof	• \$9,881,111 - \$11,363,000
Code Upgrades	• \$1,500,000
Total	• \$20,047,114 - \$23,689,663

Crosby Middle School Options



Reform Long-Range Planning Committee

- Recommend addition of new middle school to potential bond package options

Continue Investigations

- Include full building scope

Explore alternatives for CMS Portion of Red Barn Renovation

Administration Recommendation



Reform Long-Range Planning Committee

- Recommend addition of new middle school to potential bond package options

Continue Investigations

- Include full building scope

Explore alternatives for CMS Portion of Red Barn Renovation

Questions?
Thank You

