



## State of the School

---

JANUARY 13, 2025



# Hiring Updates

## 2024-2025 Openings

- Paraprofessional
- Elementary Principal Posting

The district would have three options related to the remaining IAQ funds:

1. 'Return' the funds to taxpayers through the debt service debt excess formula.
2. Run a referendum that would repurpose the remaining funds. This would be like how Janesville-Waldorf-Pemberton ran their Nov 2023 referendum.
3. Run a referendum that would repurpose the remaining funds AND request additional funds. This would be like how Kimball ran their Aug 2022 referendum.

# School Updates

---



**"The GENEROUS will themselves be blessed,  
for they SHARE their food with the poor."**

**– Proverbs 22:9**



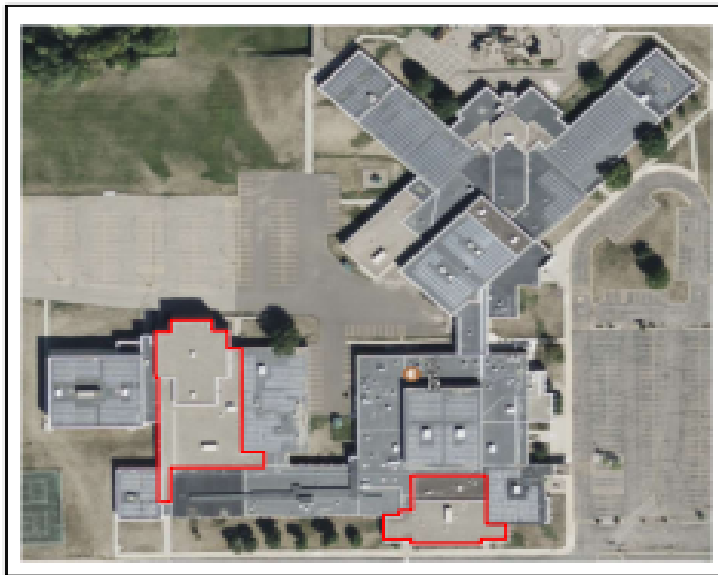
# Facilities Update

## Holiday Break

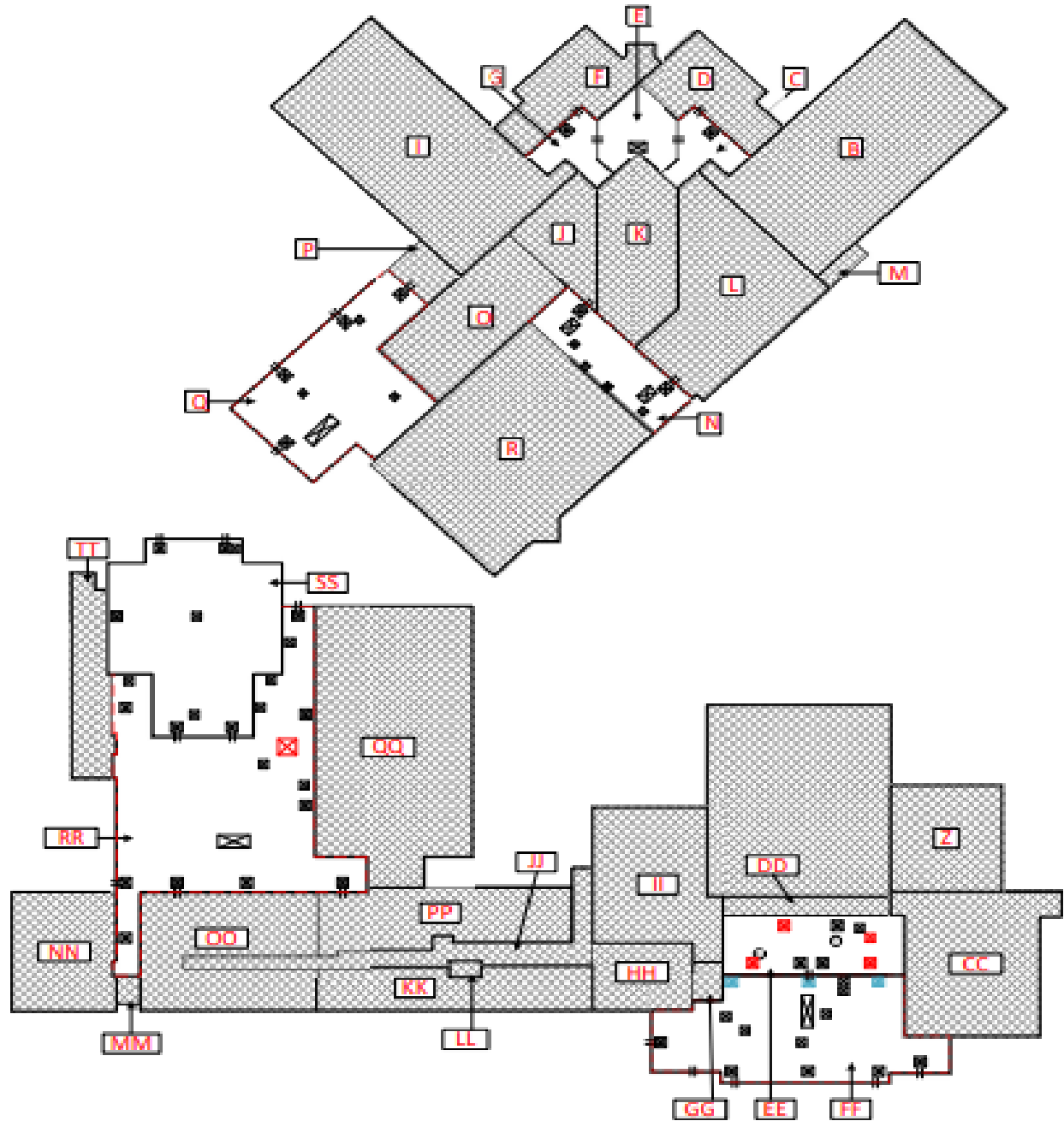
- Painted High School Cafeteria
- Cleaned athletic facilities
- Elementary Teachers' Lounge Refresh
- Waxed and polished high school entry and commons area.
- Repairs to activities center, elementary, and cafeteria basketball hoops.
- Costing out to refinish and restripe the elementary gym wood floor.



SCOPE #2



SCOPE #1



The Garland Company  
280 E. 91<sup>st</sup> Street  
Cleveland, OH 44104

THIS DOCUMENT IS THE PROPERTY OF THE GARLAND COMPANY. IT IS TO BE USED ONLY FOR THE PROJECT AND SITE SPECIFICALLY IDENTIFIED HEREIN. IT IS NOT TO BE REPRODUCED, COPIED, OR TRANSMITTED IN ANY FORM OR BY ANY MEANS, ELECTRONIC OR MECHANICAL, INCLUDING PHOTOCOPYING, RECORDING, OR BY ANY INFORMATION STORAGE AND RETRIEVAL SYSTEM, WITHOUT THE WRITTEN PERMISSION OF THE GARLAND COMPANY.



**MAPLE LAKE PUBLIC SCHOOLS**

200 Hwy. 55 E., Maple Lake, MN 55359

SHEET TITLE:  
**SCOPE  
1 & 2**

DATE:  
**11.29.24**

## **Fund what has been mandated:**

Increase the Basic Formula allowance by “3&3” over the forecast base for FY 26-27

Shore up Compensatory Aid as Direct Certification is used solely to calculate this revenue stream

On-going state funding for Unemployment Insurance

Additional funding for the Read Act

## **Closing funding gaps:**

Increase the LTFM allowance and allow roofs, pavements and HVAC projects in Health & Safety

Increase Basic Formula & Local Optional Revenues to address inflationary pressures

Restore Seasonal & Recreational Property to the RMV tax base, eliminating it from the state’s Commercial/Industrial levy.

Ensure minimum revenues for small schools & cooperatives for meaningful revenue generation across all public-school entities.

Expand VPK to all 4-year-olds qualifying for free and reduced-price meals

## **Policy flexibility, not mandates:**

Create flexible pathways to licensure, in addition to broader licensure categories

Oppose unfunded mandates and “one-size-fits-all” education policy

Oppose additional course requirements for graduation

# Legislative Platform

---





Questions

---