

Minidoka County School District

Minidoka County School District 2015-2016 District Demographics

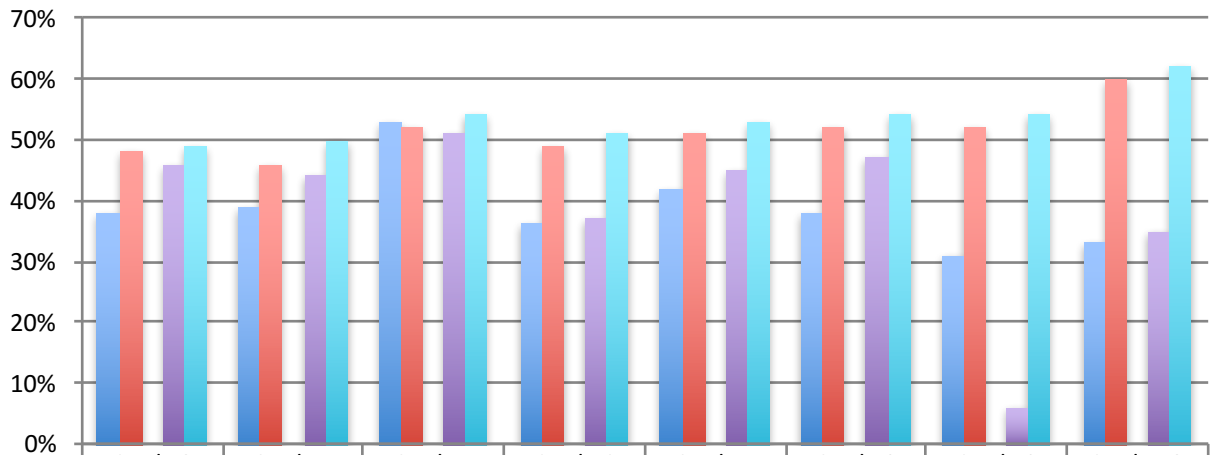
*** As of 05/17/2016

Demographics	%	PK-12th	Male	Female
American Indian	0.5%	21	7	14
Asian	0.1%	6	2	4
Black/African American	0.2%	10	4	6
Native Hawaiian/Pacific Islander	0.1%	5	4	1
White	50.6%	2188	1163	1025
Two or More	1.5%	65	34	31
Hispanic/Latino	44.3%	1919	1009	910
Special Education (SPE)	12.5%	540	358	182
Gifted & Talented (GT)	2.8%	120	54	66
Migrant (MIG)	5.3%	229	128	101
Free & Reduced Lunch (FRL)	55.5%	2402	1377	1025
Limited English Proficiency (LEP)	10.2%	443	227	216
Preschool	4.9%	212	128	84
Kindergarten	7.6%	331	161	170
1st Grade	8.0%	347	180	167
2nd Grade	8.7%	375	197	178
3rd Grade	7.9%	340	171	169
4th Grade	8.0%	345	188	157
5th Grade	7.3%	317	166	151
6th Grade	7.0%	305	153	152
7th Grade	7.5%	326	182	144
8th Grade	6.1%	265	137	128
9th Grade	7.7%	335	166	169
10th Grade	6.9%	297	176	121
11th Grade	6.3%	272	130	142
12th Grade	6.0%	261	147	114
Total Students Enrolled		4328	2282	2046

Minidoka County School District

ISAT 2.0 ELA

Minidoka County School District SBAC Proficiency English Language Arts 2015-2016

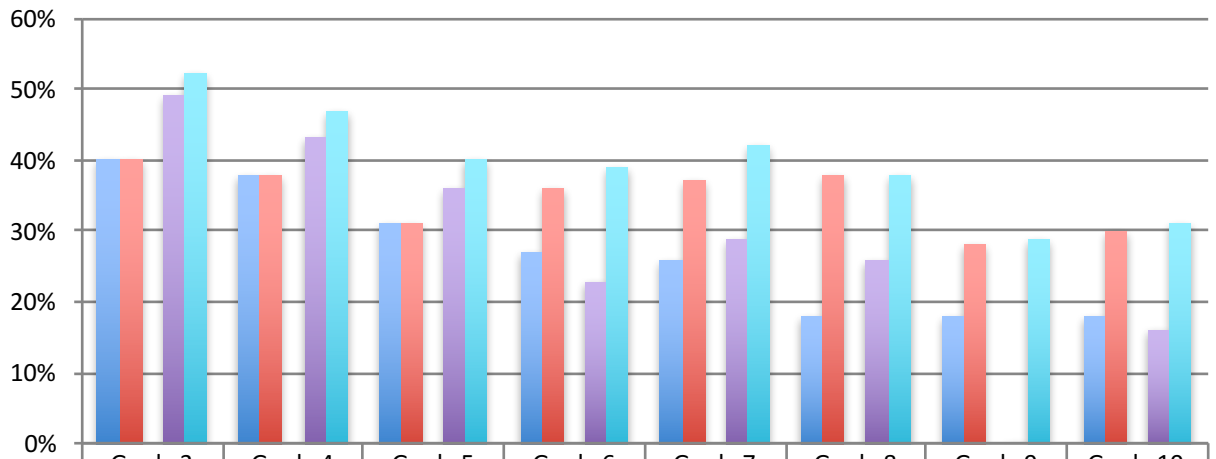


	Grade 3	Grade 4	Grade 5	Grade 6	Grade 7	Grade 8	Grade 9	Grade 10
MCSD Average 14-15	38%	39%	53%	36%	42%	38%	31%	33%
State Average 14/15	48%	46%	52%	49%	51%	52%	52%	60%
MCSD Average 15-16	46%	44%	51%	37%	45%	47%	6%	35%
State Average 15-16	49%	50%	54%	51%	53%	54%	54%	62%

Minidoka County School District

ISAT 2.0 Math

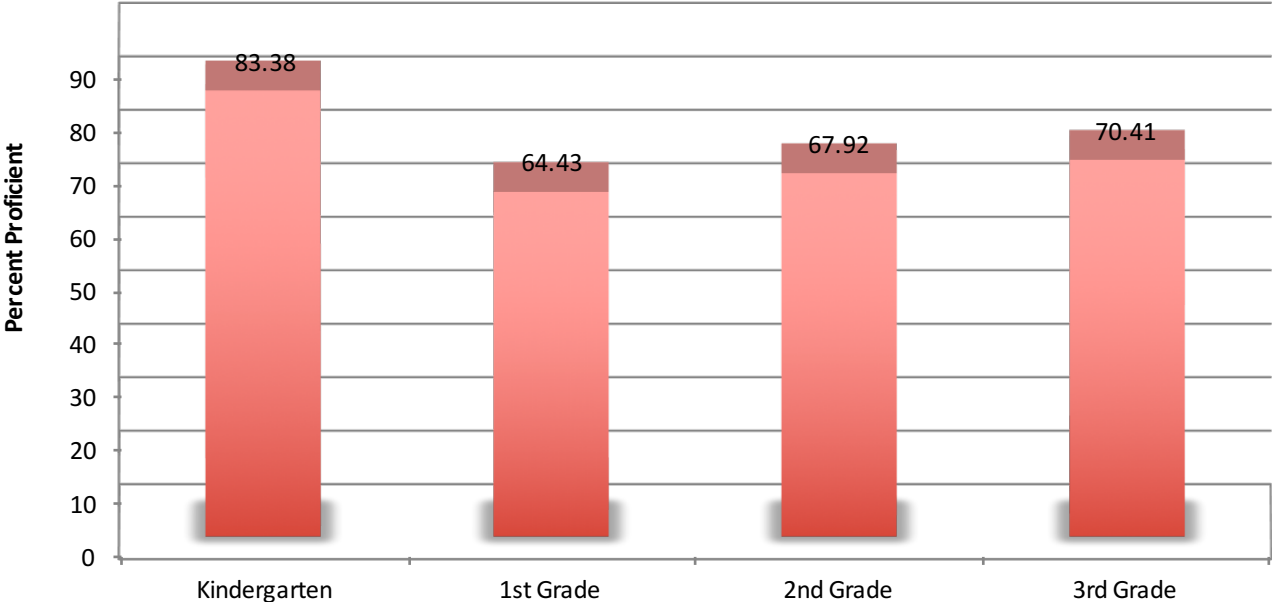
Minidoka County School District SBAC Proficiency Math 2015-2016



	Grade 3	Grade 4	Grade 5	Grade 6	Grade 7	Grade 8	Grade 9	Grade 10
■ MCS D Average 14-15	40%	38%	31%	27%	26%	18%	18%	18%
■ State Average 14-15	40%	38%	31%	36%	37%	38%	28%	30%
■ MCS D Average 15-16	49%	43%	36%	23%	29%	26%	0%	16%
■ State Average 15-16	52%	47%	40%	39%	42%	38%	29%	31%

Minidoka County School District IRI

Minidoka County School District IRI Proficiency
2015-2016



Kindergarten	1st Grade	2nd Grade	3rd Grade
83.38	64.43	67.92	70.41