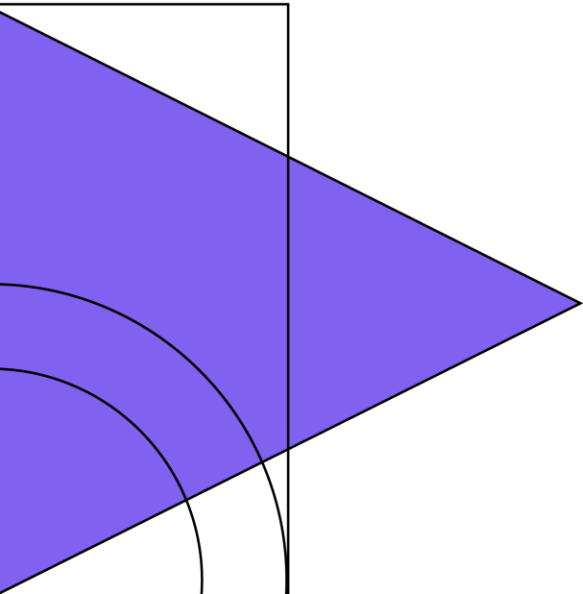
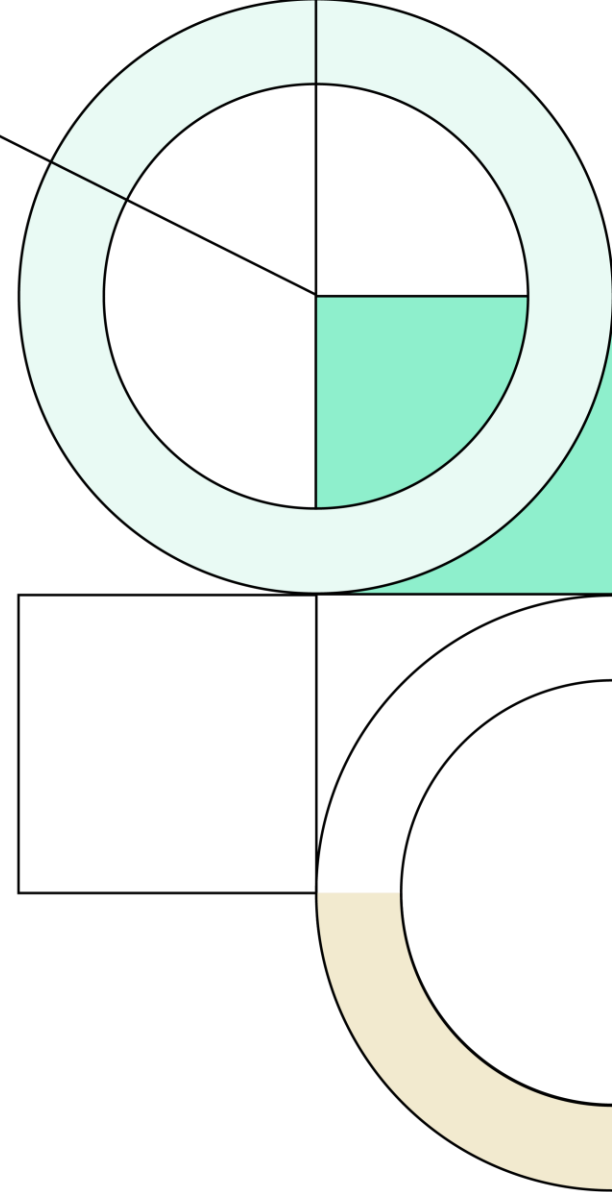




Fall 2024

Demographic Report

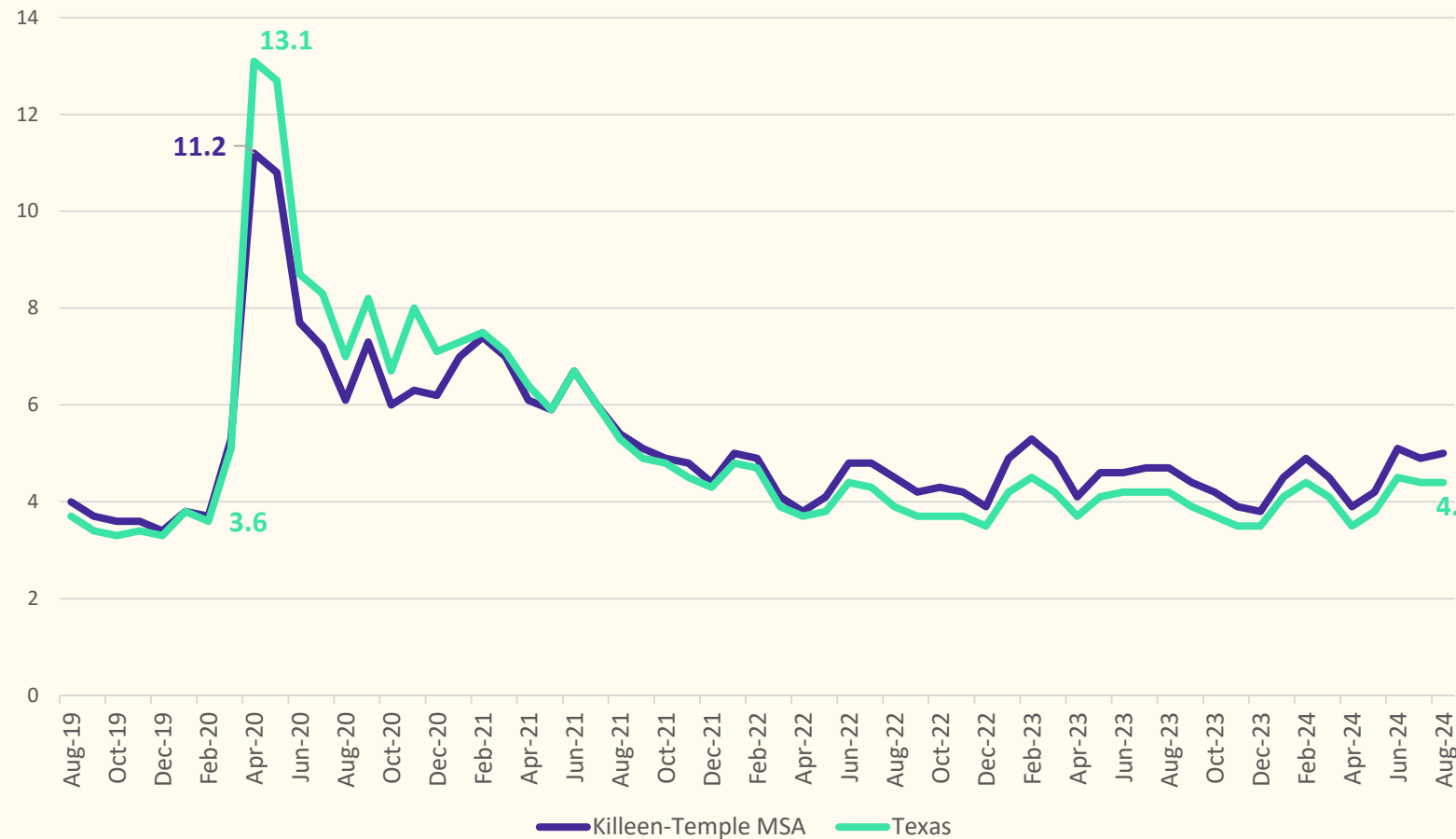
October 21, 2024



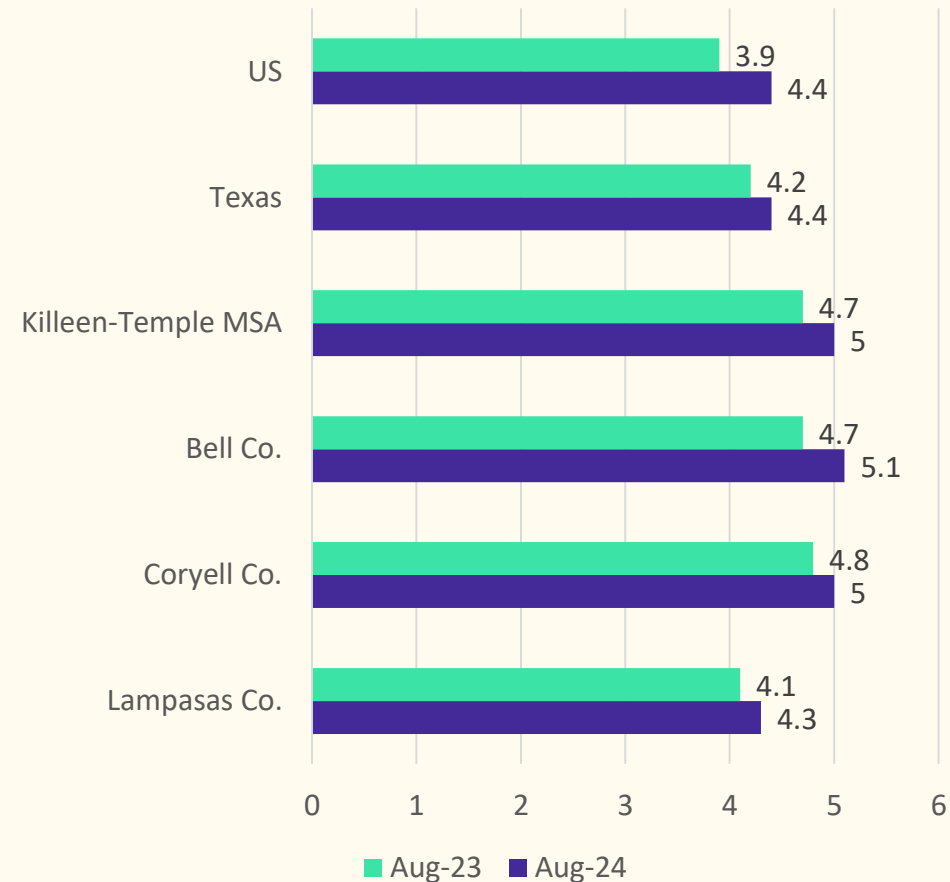


Local Economic Conditions

Unemployment Rate, Aug 2019 – Aug 2024



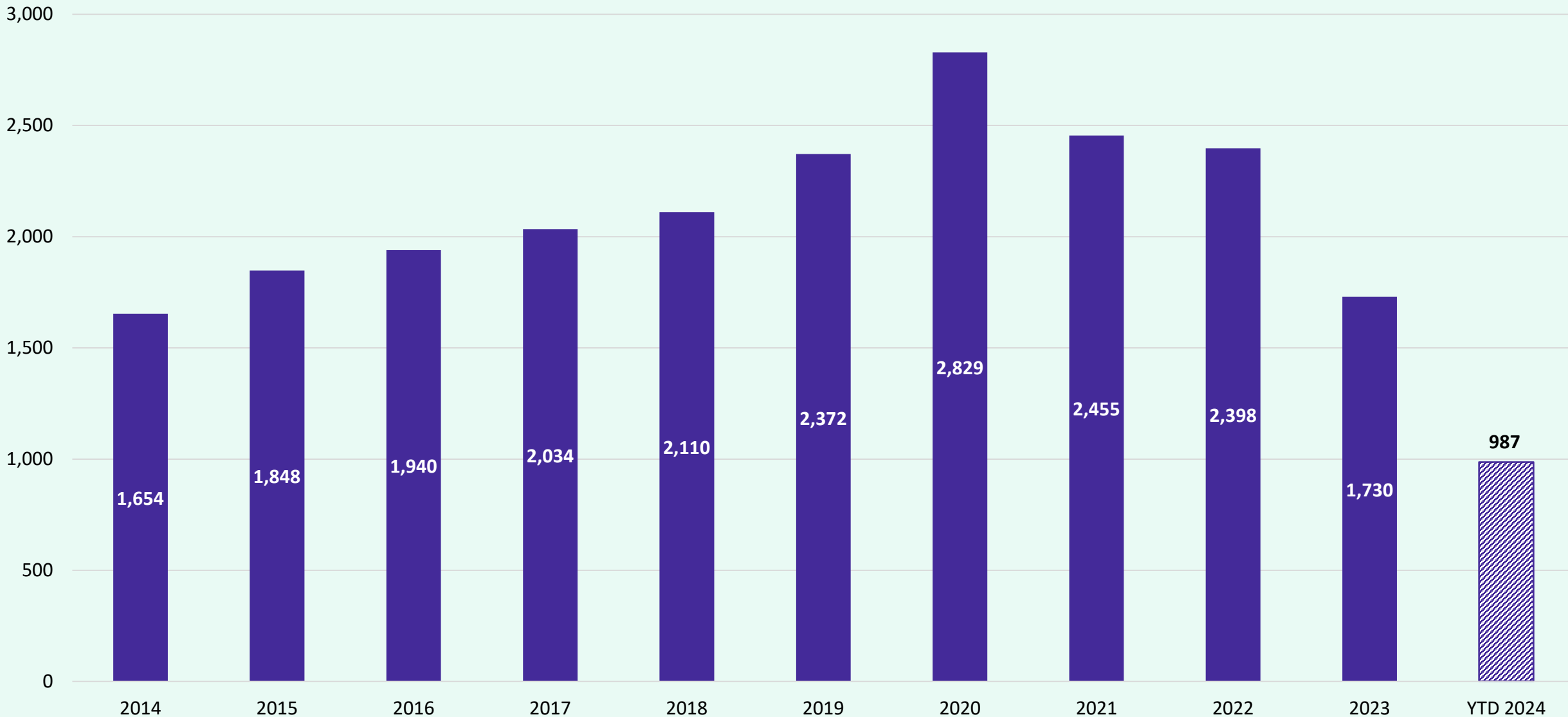
Unemployment Rate, Year Over Year





BISD Housing Market Analysis

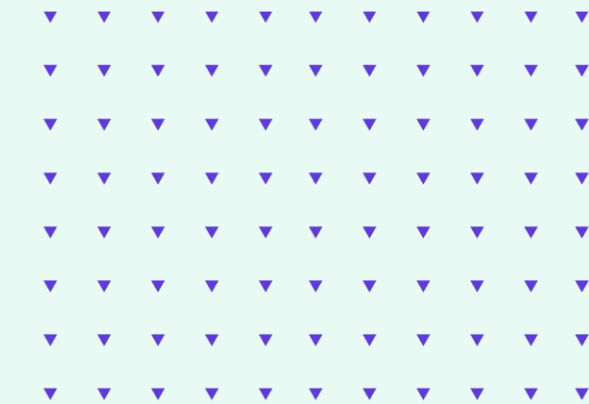
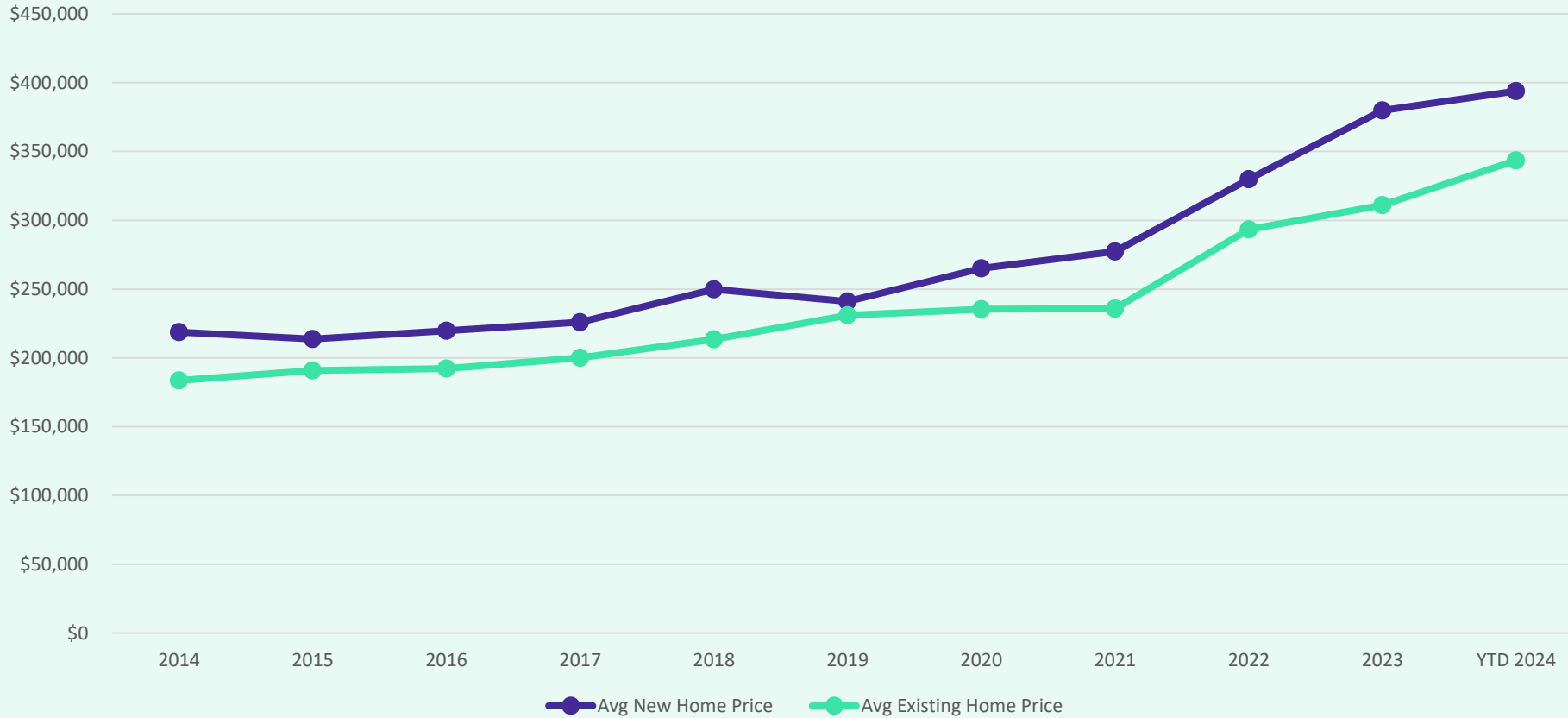
Total Home Sales in Belton ISD, 2014 – August 2024



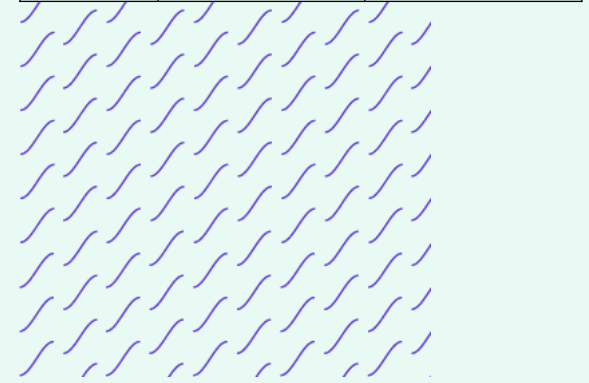


Belton ISD Home Price Analysis

Avg. New v. Existing Sale Price, 2014 – August 2024



	Avg New Home	Avg Existing Home
2014	\$218,700	\$183,532
2015	\$213,627	\$190,880
2016	\$219,784	\$192,190
2017	\$225,969	\$200,046
2018	\$249,917	\$213,496
2019	\$240,928	\$231,016
2020	\$265,153	\$235,399
2021	\$277,424	\$235,719
2022	\$329,824	\$293,326
2023	\$379,918	\$310,990
YTD 2024	\$394,004	\$343,608

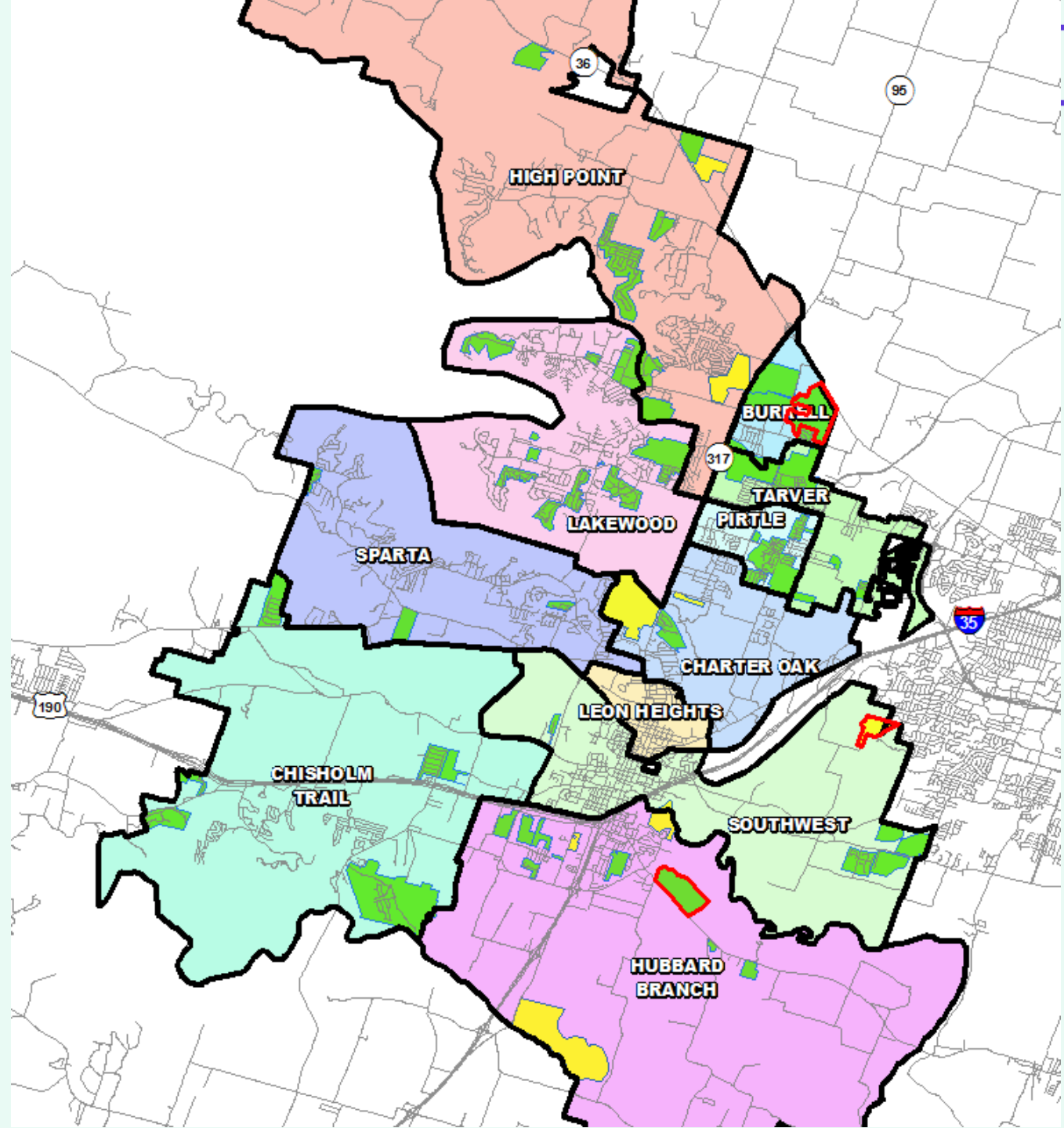
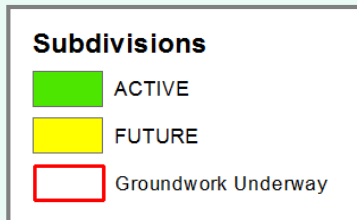


- The average new home sale price in Belton ISD has risen 80% in the last 10 years, an increase of more than \$175,300
- The average existing home sale price in BISSD has increased 87%, an increase of more than \$160,000



District Housing Overview

- The district has 53 actively building subdivisions
- Within Belton ISD there are 8 future subdivisions
- Of these, groundwork is underway on more than 340 lots within 3 subdivisions





Residential Activity



Northpointe

- 658 total lots
- Approx. 227 future lots
- Approx. 308 vacant developed lots
- Approx. 15 homes under construction
- Approx. 108 occupied homes
- Closed 52 homes in last 12 months
- \$260K+
- Current Student Yield = 0.602

May 2024



North Gate

- 563 total lots
- Approx. 225 future lots
- Approx. 52 vacant developed lots
- Approx. 29 homes under construction
- Approx. 257 occupied homes
- Groundwork underway for 93 lots in Phase 6 Sec 1 & 34 lots in Phase 4; estimated delivery late 2024
- \$280K+
- Current Student Yield = 0.953

May 2024



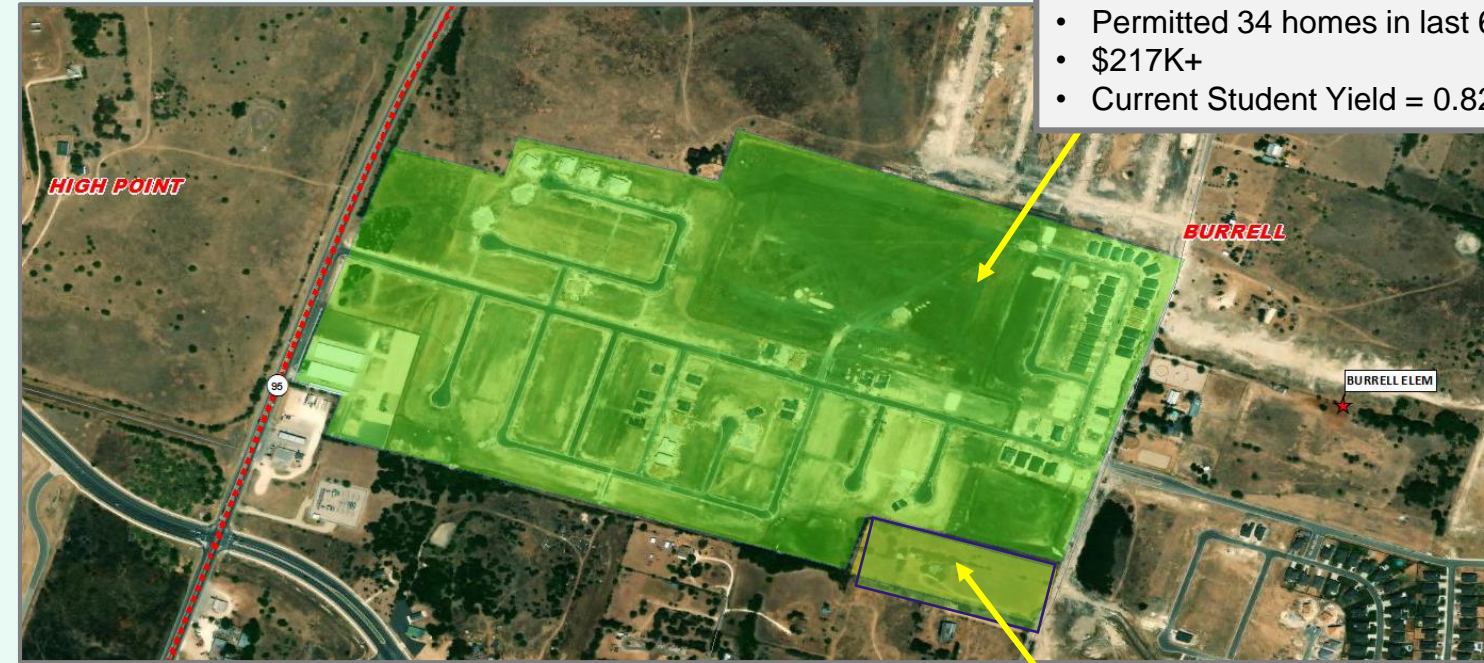


Residential Activity

Mesa Ridge

- 425 total lots
- Approx. 207 vacant developed lots
- Approx. 36 homes under construction
- Approx. 182 occupied homes
- Closed 79 homes in last 12 months
- Permitted 34 homes in last 6 months
- \$217K+
- Current Student Yield = 0.824

July 2024



North Ridge Townhomes

- 65 total townhome lots
- Approx. 61 vacant developed lots
- Approx. 4 townhomes under construction
- Homebuilding began June 2024
- Anticipate first residents early 2025

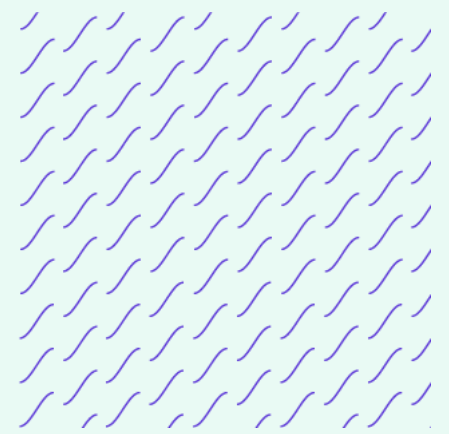
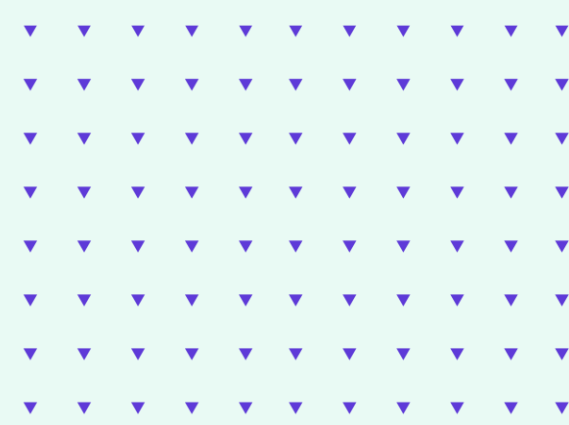




Residential Activity

Westfield

- 1,123 total lots
- Approx. 172 future lots
- Approx. 84 vacant developed lots
- Approx. 9 homes under construction
- Approx. 858 occupied homes
- \$274K+
- Current Student Yield = 0.569

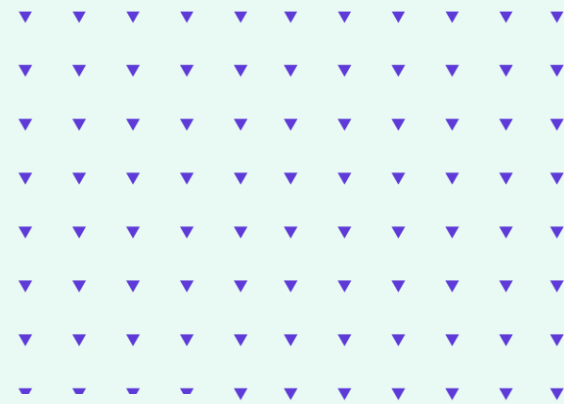




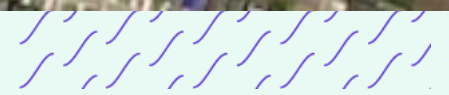
Residential Activity

Lake Point Terrace

- 686 total lots
- Approx. 45 vacant developed lots
- Approx. 46 homes under construction
- Approx. 595 occupied homes
- Closed 87 homes in last 12 months
- Final lots delivered for homebuilding Spring 2024
- \$300K+
- Current Student Yield = 0.602



July 2024

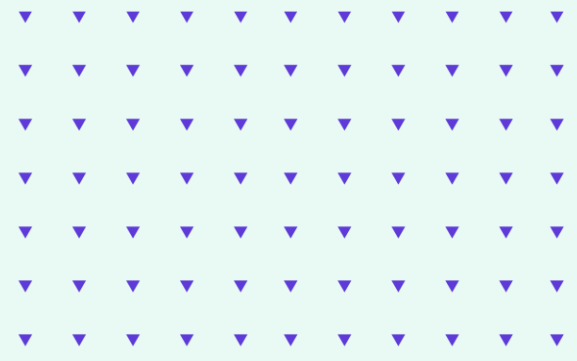




Residential Activity

The Grove at Lakewood Ranch

- 600 total lots
- Approx. 27 future lots
- Approx. 204 vacant developed lots
- Approx. 19 homes under construction
- Approx. 350 occupied homes
- Closed 20 homes in last 12 months
- Phase 7 (41 lots) & Phase 8 (120 lots) delivered for homebuilding Spring 2024
- \$170K - \$300K
- Current Student Yield = 0.714

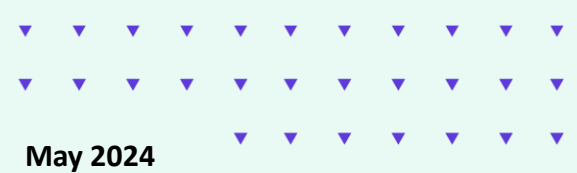


July 2024





Residential Activity



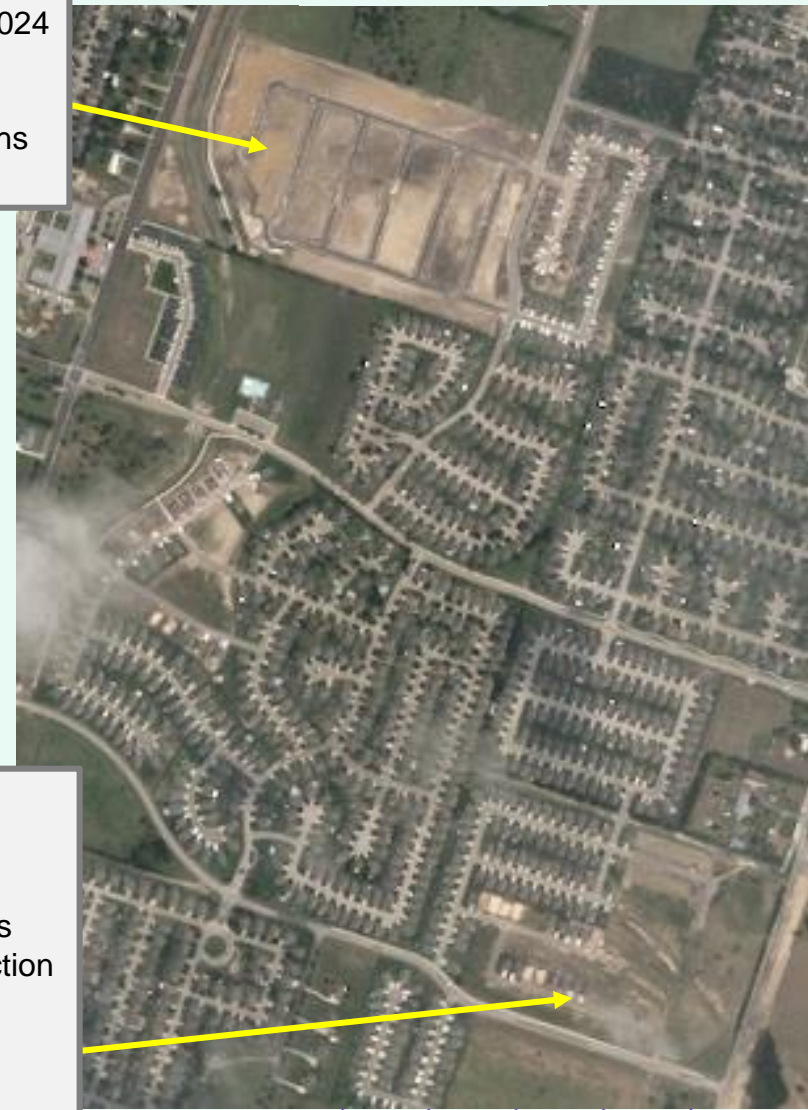
May 2024

Fresh Meadows

- 263 total single-family rental homes under construction
- First homes completed Spring 2024
- Phase 2 (184 lots) delivered for homebuilding May 2024
- 70 permits issued in last 6 months
- \$2,045 - \$2,395 per month

Hills of Westwood

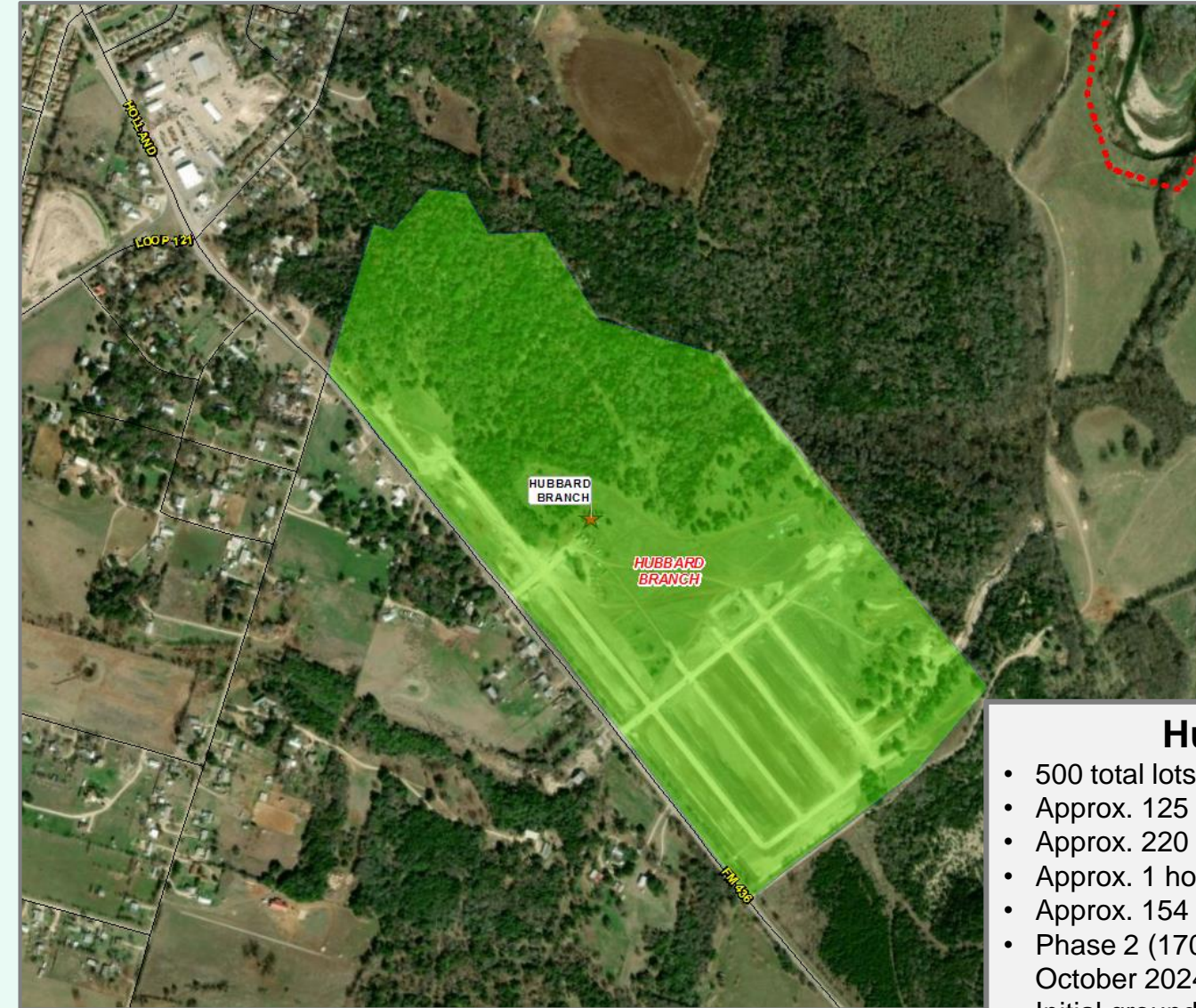
- 1,128 total lots
- Approx. 350 future lots
- Approx. 131 vacant developed lots
- Approx. 23 homes under construction
- Approx. 624 occupied homes
- 114 lots in Phase 14 delivered for homebuilding late Spring 2024
- Issued 34 permits in last 6 months
- \$300K+
- Current Student Yield = 0.569





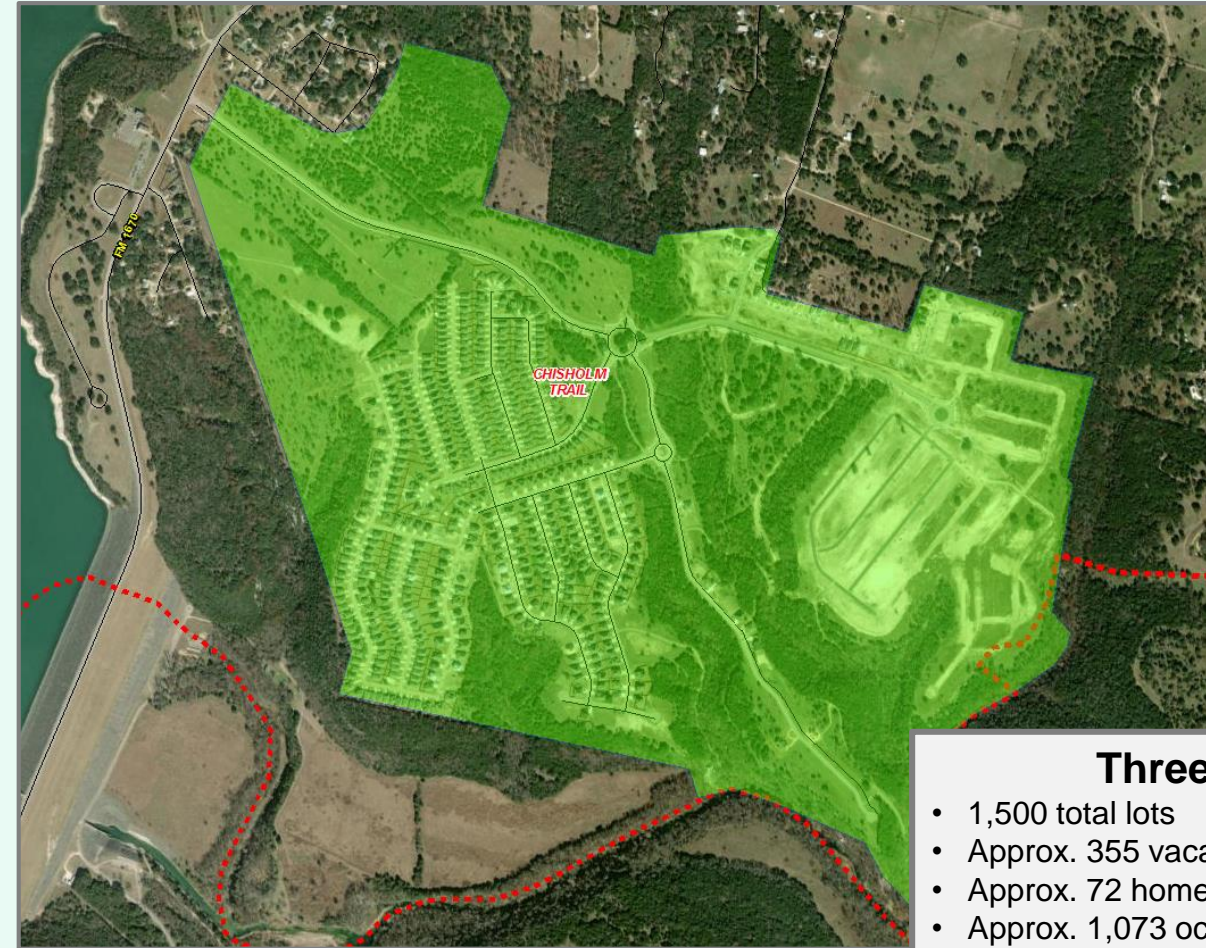
Residential Activity

July 2024



Hubbard Branch

- 500 total lots
- Approx. 125 future lots
- Approx. 220 vacant developed lots
- Approx. 1 home under construction
- Approx. 154 occupied homes
- Phase 2 (170 lots) delivered for homebuilding October 2024
- Initial groundwork underway on remaining lots
- Anticipate building 50 – 60 homes per year
- \$340K+
- Current Student Yield = 0.506



Three Creeks

- 1,500 total lots
- Approx. 355 vacant developed lots
- Approx. 72 homes under construction
- Approx. 1,073 occupied homes
- Final lots in Phase 10 (287 lots) delivered for homebuilding Spring 2024
- Building 100 – 125 homes per year
- DR Horton
- \$340K - \$550K
- Current Student Yield = 0.581



Residential Activity

May 2024

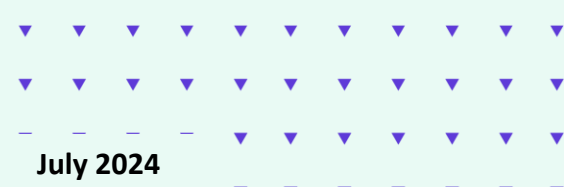


Wilma's Way

- 30 total lots
- Approx. 29 vacant developed lots
- Approx. 1 home under construction
- Homebuilding started mid 2024
- Mid \$300K+

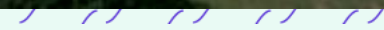


Residential Activity



- ### Hidden Trails
- 256 total lots
 - Approx. 155 future lots
 - Approx. 98 vacant developed lots
 - Approx. 3 homes under construction
 - Phase 1 (101 lots) delivered for homebuilding mid 2024

July 2024



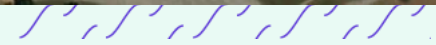


Residential Activity

The Preserve at Lions Park

- 304 total future lots
- Prelim plat approved Nov 2023
- Final plat Phase 1 (121 lots) approved Aug 2024; groundwork underway

August 2024





Residential Activity

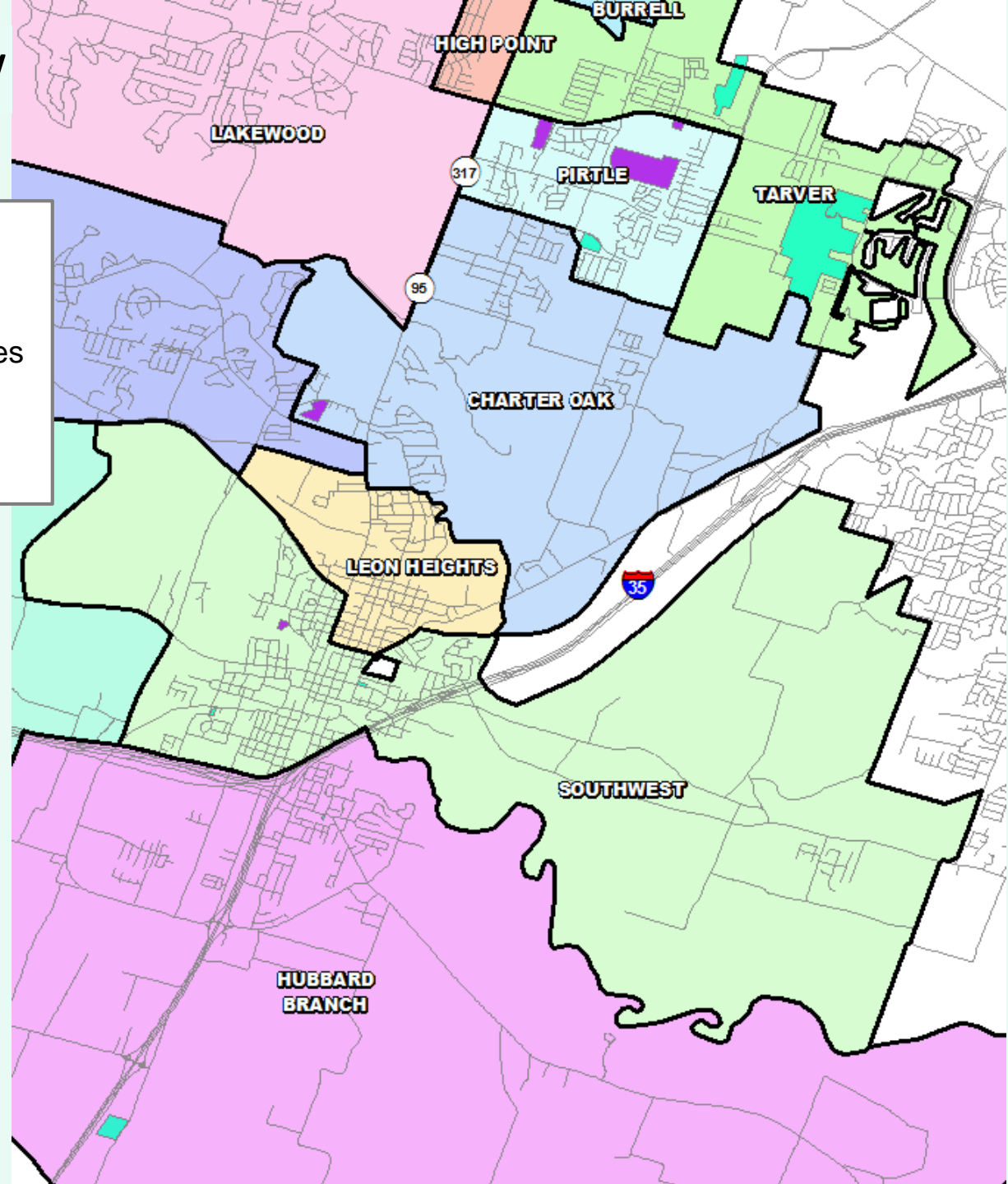
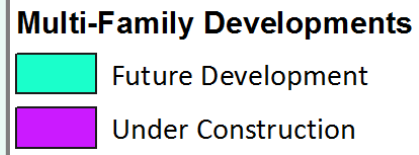


- 1,750 total future lots
- 500-acre master planned community with amenities such as a large clubhouse, event facilities, lengthy trail system, and sports facilities
- Will include future elementary school
- Anticipate groundwork early 2025



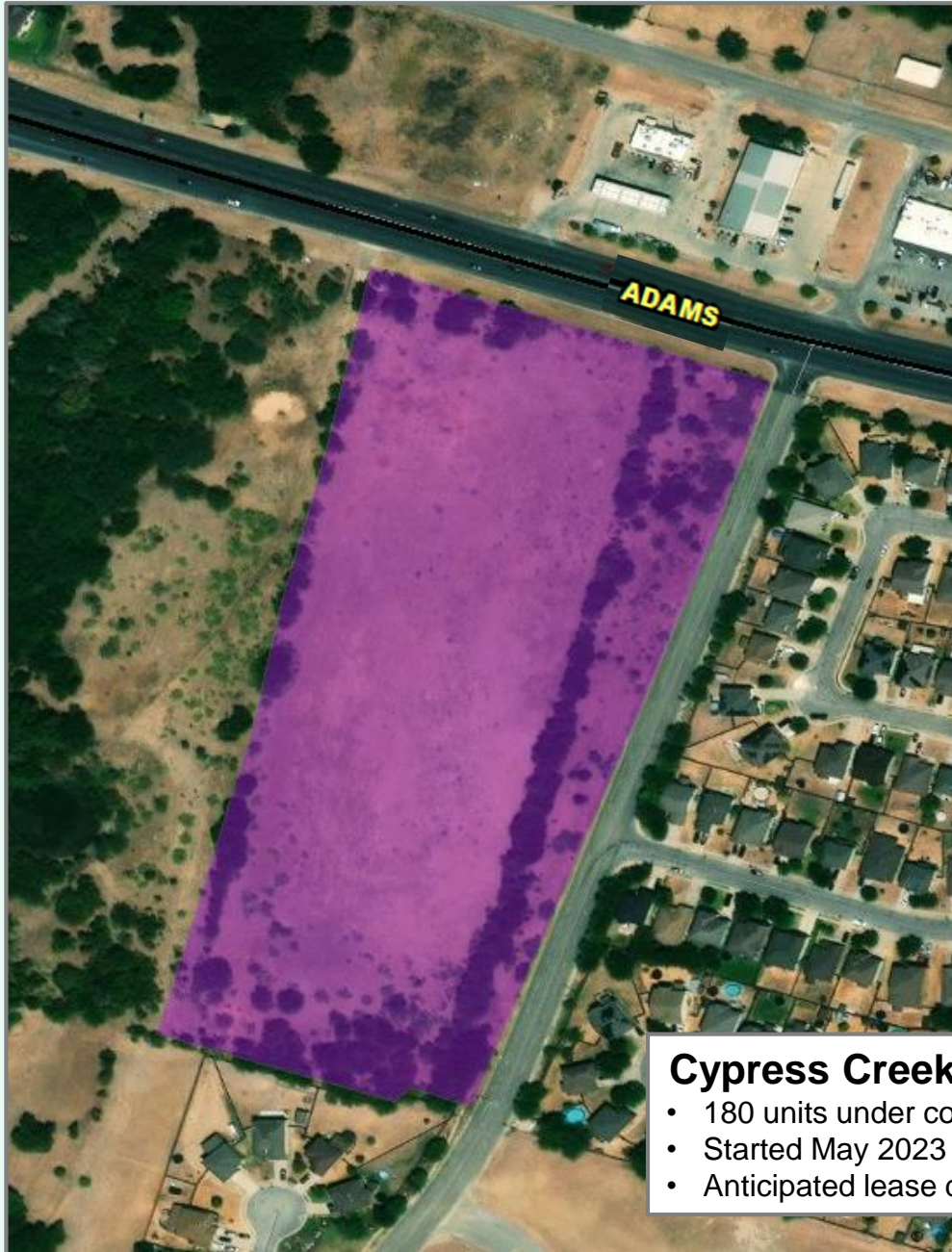
Multi-Family Housing Overview

- There are currently 657 units under construction in the district
- Within Belton ISD there are more than 700 future multi-family units in the planning stages
- Of these units, approx. 100 units are age-restricted and will not impact BISD's student yield





Multi-Family Activity



Cypress Creek Apartments

- 180 units under construction
- Started May 2023
- Anticipated lease date Nov 2024

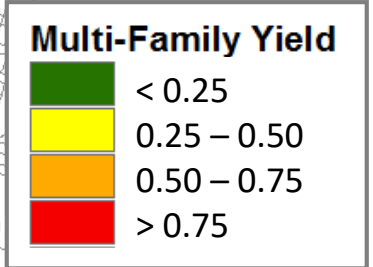
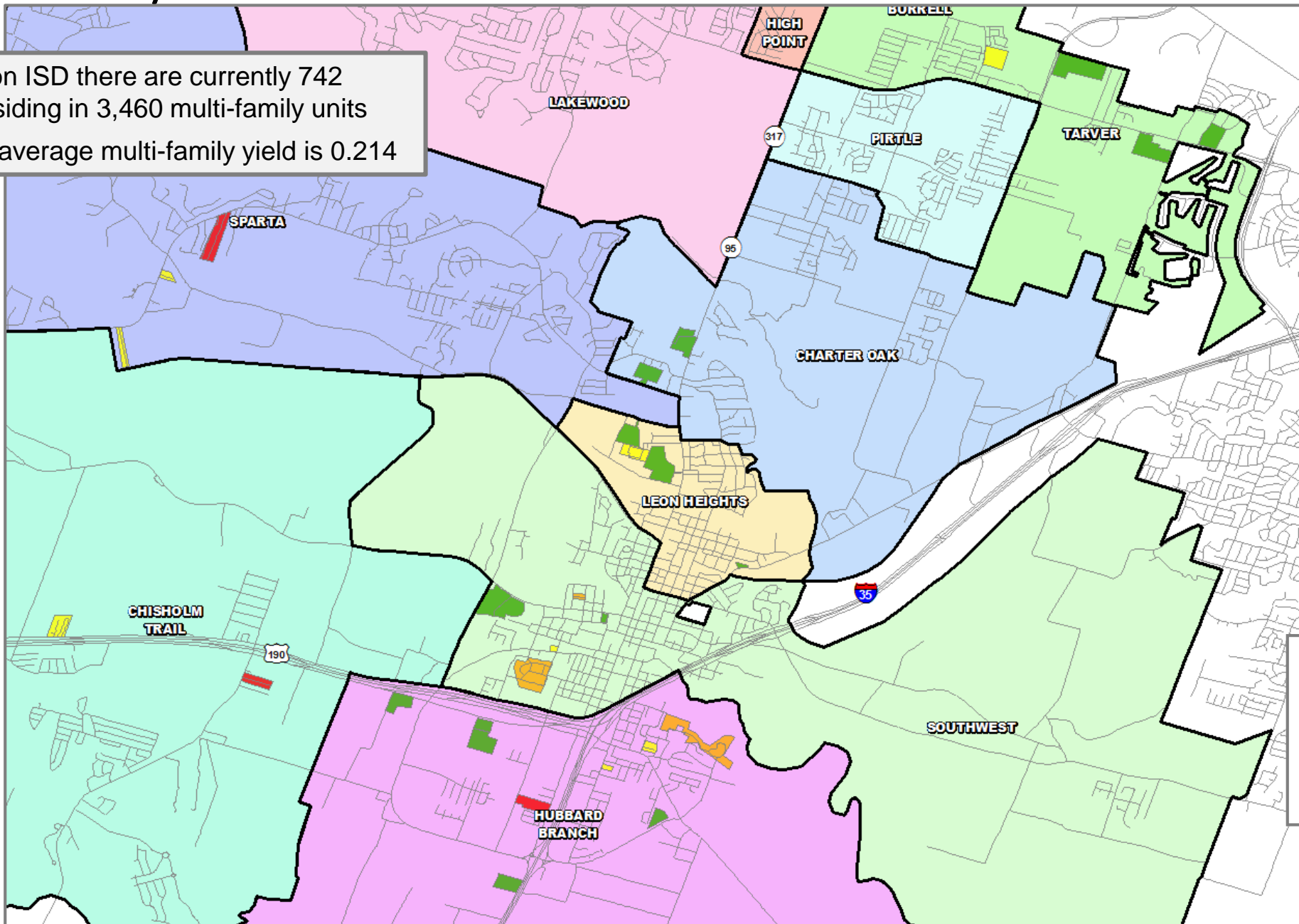
July 2024





Multi-Family Yield

- Within Belton ISD there are currently 742 students residing in 3,460 multi-family units
- The district average multi-family yield is 0.214





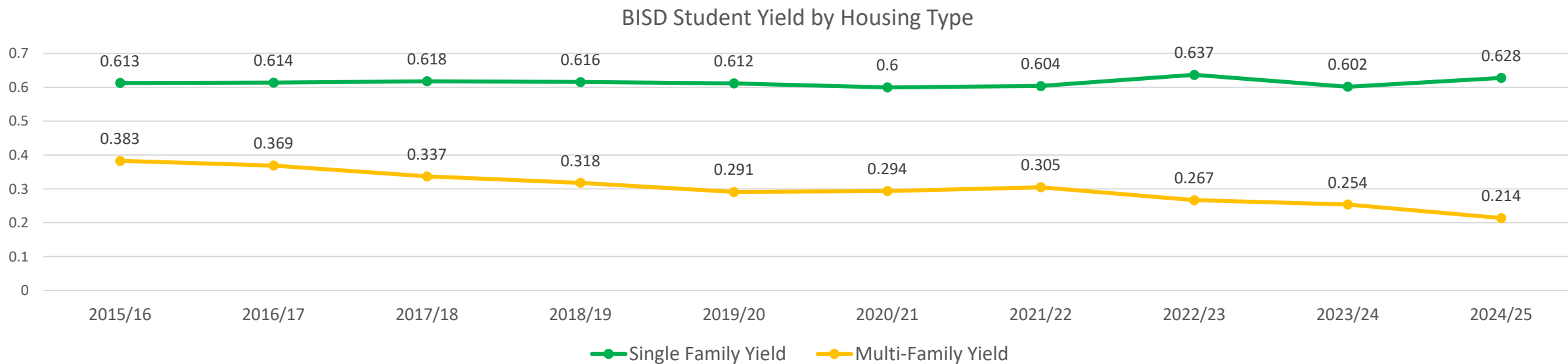
Student Yield by Housing Type



Single Family Yield
0.628



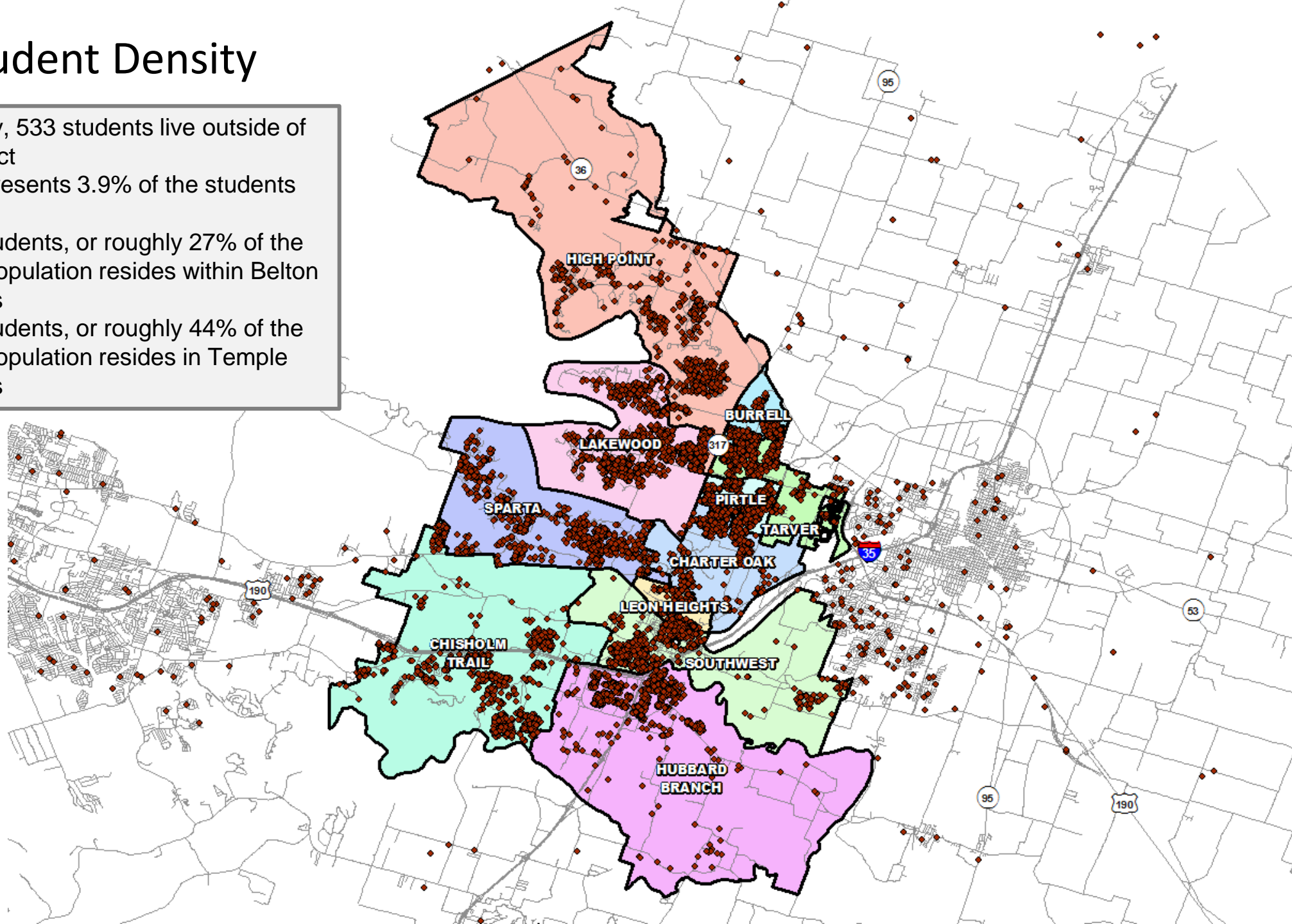
Multi-Family Yield
0.214





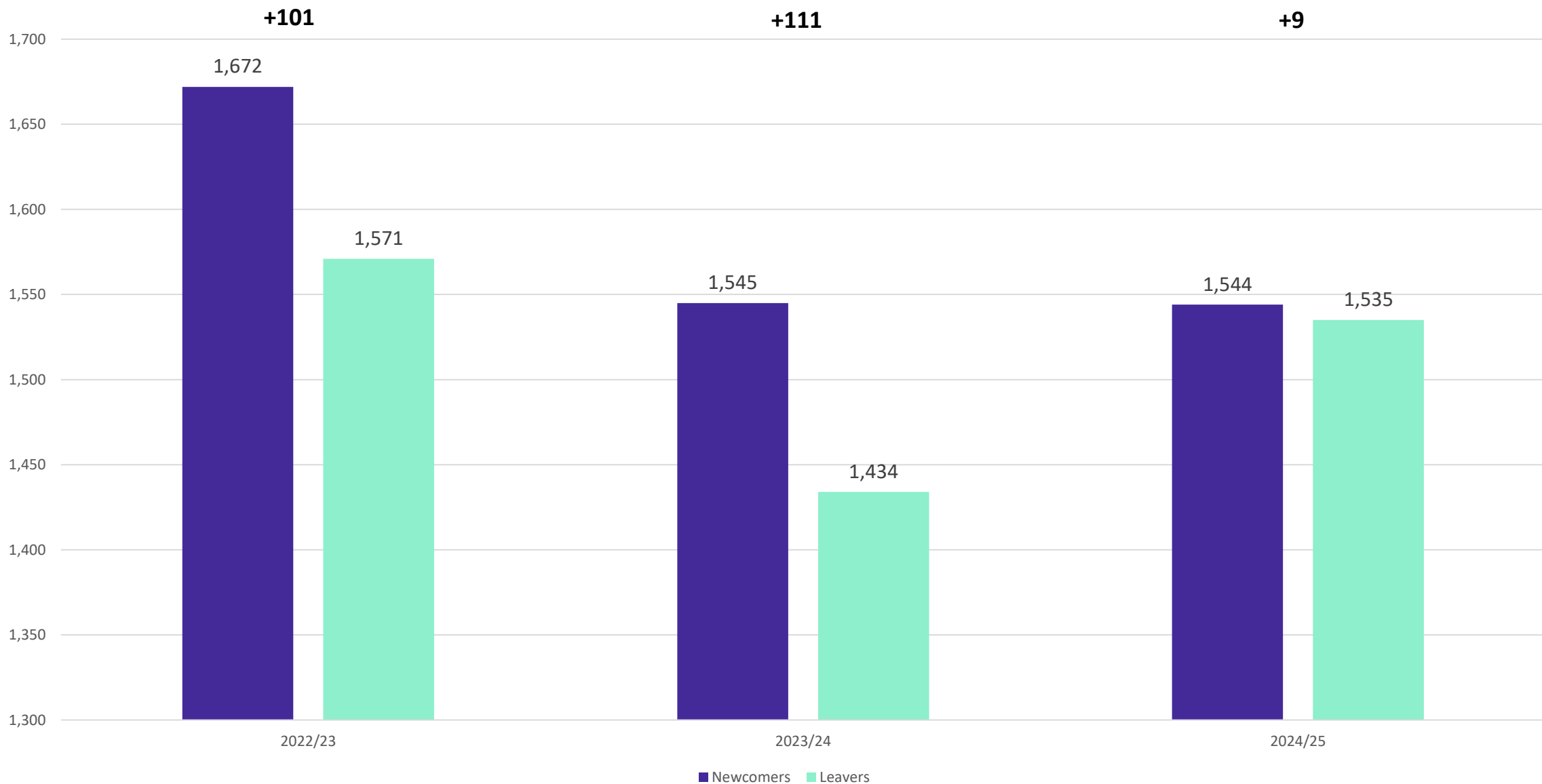
Student Density

- Currently, 533 students live outside of the district
- This represents 3.9% of the students enrolled
- 3,722 students, or roughly 27% of the district population resides within Belton city limits
- 5,967 students, or roughly 44% of the district population resides in Temple city limits



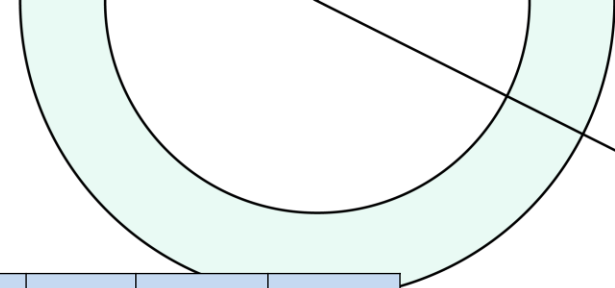


Newcomers and Leavers





Annual Enrollment Change



YEAR	EE	PK	K	1st	2nd	3rd	4th	5th	6th	7th	8th	9th	10th	11th	12th	Total	Total Growth	% Growth
2020/21	61	304	900	893	883	886	900	924	971	980	1,080	1,033	1,030	915	849	12,609	423	3.5%
2021/22	63	378	876	954	974	913	958	969	993	1,045	1,056	1,226	1,048	1,027	846	13,326	717	5.7%
2022/23	72	453	895	936	974	1,016	975	984	1,011	999	1,041	1,148	1,152	1,029	959	13,644	318	2.4%
2023/24	93	426	898	928	955	994	1,047	1,013	1,008	1,055	1,043	1,157	1,073	1,120	998	13,808	164	1.2%
2024/25	92	398	805	914	949	969	1,004	1,066	1,024	1,035	1,058	1,148	1,133	1,023	1,086	13,704	-104	-0.8%

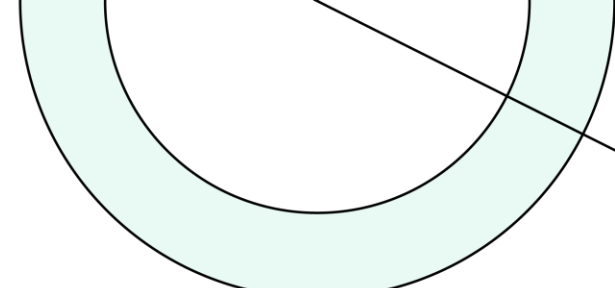
Yellow box = largest grade per year
Green box = second largest grade per year

YEAR	EE	PK	K	1st	2nd	3rd	4th	5th	6th	7th	8th	9th	10th	11th	12th	ELEM	MID	HIGH
3-YR Avg.	1.141	1.024	0.974	1.041	1.021	1.026	1.036	1.028	1.026	1.025	1.014	1.100	0.951	0.969	0.958	1.021	1.022	0.994
2021/22	1.161	1.490	0.971	1.017	1.068	1.110	1.109	1.061	1.079	0.910	0.886	1.061	0.715	0.754	0.993	1.056	0.958	0.881
2022/23	1.143	1.198	1.022	1.068	1.021	1.043	1.068	1.027	1.043	1.006	0.996	1.087	0.940	0.982	0.934	1.042	1.015	0.986
2023/24	1.292	0.940	1.003	1.037	1.020	1.021	1.031	1.039	1.024	1.044	1.044	1.111	0.935	0.972	0.970	1.025	1.037	0.997
2024/25	0.989	0.934	0.896	1.018	1.023	1.015	1.010	1.018	1.011	1.027	1.003	1.101	0.979	0.953	0.970	0.997	1.013	1.001

- District enrollment decreased by 104 students from the previous 2023/24 School Year. Kindergarten enrollment hasn't been in the low 800s level since the Fall of the 2018-19 school year.
- The two largest grade groups have remained consistently in the High School grade levels the last several years.
- The highest cohort increases from last year are in the 1st, 2nd, 7th, and 9th Grade levels.



Ten Year Forecast by Grade Level – Low

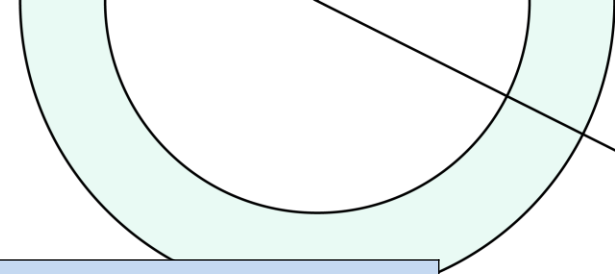


Year	EE	PK	K	1st	2nd	3rd	4th	5th	6th	7th	8th	9th	10th	11th	12th	Total	Total Growth	% Growth
2020/21	61	304	900	893	883	886	900	924	971	980	1,080	1,033	1,030	915	849	12,609	423	3.5%
2021/22	63	378	876	954	974	913	958	969	993	1,045	1,056	1,226	1,048	1,027	846	13,326	717	5.7%
2022/23	72	453	895	936	974	1,016	975	984	1,011	999	1,041	1,148	1,152	1,029	959	13,644	318	2.4%
2023/24	93	426	898	928	955	994	1,047	1,013	1,008	1,055	1,043	1,157	1,073	1,120	998	13,808	164	1.2%
2024/25	92	398	805	914	949	969	1,004	1,066	1,024	1,035	1,058	1,148	1,133	1,023	1,086	13,704	-104	-0.8%
2025/26	92	360	857	832	935	970	986	1,027	1,082	1,046	1,039	1,161	1,113	1,097	987	13,584	-120	-0.9%
2026/27	92	375	911	880	845	948	980	999	1,022	1,102	1,054	1,146	1,114	1,072	1,056	13,596	12	0.1%
2027/28	92	385	924	950	902	864	963	1,002	1,009	1,039	1,104	1,158	1,109	1,072	1,032	13,605	9	0.1%
2028/29	92	400	964	954	971	918	876	986	1,028	1,024	1,043	1,214	1,118	1,069	1,034	13,691	86	0.6%
2029/30	92	410	1,001	989	973	985	928	891	1,032	1,024	1,029	1,148	1,169	1,077	1,031	13,779	88	0.6%
2030/31	92	420	1,028	1,031	1,012	988	1,002	946	896	1,046	1,027	1,132	1,110	1,125	1,039	13,894	115	0.8%
2031/32	92	440	1,061	1,052	1,048	1,023	997	1,016	940	912	1,050	1,130	1,093	1,070	1,084	14,008	114	0.8%
2032/33	92	450	1,088	1,087	1,066	1,050	1,025	1,007	1,019	957	915	1,156	1,090	1,054	1,031	14,087	79	0.6%
2033/34	92	460	1,107	1,116	1,099	1,065	1,049	1,037	1,017	1,037	960	1,006	1,115	1,049	1,017	14,226	139	1.0%
2034/35	92	465	1,101	1,134	1,132	1,104	1,069	1,061	1,050	1,035	1,042	1,056	970	1,074	1,010	14,395	169	1.2%

Yellow box = largest grade per year
 Green box = second largest grade per year



Ten Year Forecast by Campus – Low



Campus	Capacity	Current	ENROLLMENT PROJECTIONS									
		2024/25	2025/26	2026/27	2027/28	2028/29	2029/30	2030/31	2031/32	2032/33	2033/34	2034/35
BELTON EARLY CHILDHOOD	628	490	452	467	477	492	502	512	532	542	552	557
EARLY CHILDHOOD TOTALS	628	490	452	467	477	492	502	512	532	542	552	557
BURRELL ELEMENTARY	800	472	511	550	591	621	653	694	707	708	711	714
CHARTER OAK ELEMENTARY	800	606	619	617	600	611	626	643	650	659	675	682
CHISHOLM TRAIL ELEMENTARY	792	760	730	716	716	703	702	723	740	752	766	773
HIGH POINT ELEMENTARY	792	563	533	502	488	500	490	510	528	542	556	568
JOE PIRTLE ELEMENTARY	792	570	568	570	558	569	572	602	632	661	695	728
LAKWOOD ELEMENTARY	792	576	553	526	515	491	491	499	508	514	521	524
LEON HEIGHTS ELEMENTARY	265	183	169	161	157	152	153	157	161	165	170	174
HUBBARD BRANCH ELEMENTARY	800	516	524	538	572	616	657	710	758	796	835	874
SOUTHWEST ELEMENTARY	540	416	411	416	432	440	454	474	493	489	483	485
SPARTA ELEMENTARY	685	549	509	497	491	491	484	493	499	499	503	504
TARVER ELEMENTARY	792	496	480	470	485	475	485	502	521	538	558	575
ELEMENTARY TOTALS	7,850	5,707	5,607	5,563	5,605	5,669	5,767	6,007	6,197	6,323	6,473	6,601
Elementary Absolute Change		-59	-100	-44	42	64	98	240	190	126	150	128
Elementary Percent Change		-1.02%	-1.75%	-0.78%	0.75%	1.14%	1.73%	4.16%	3.16%	2.03%	2.37%	1.98%

Green box = 95% capacity
Yellow box = over capacity



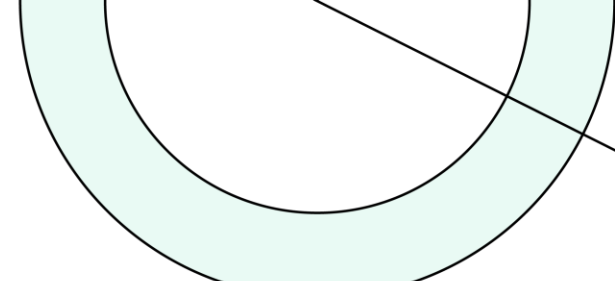
Ten Year Forecast by Campus – Low

Campus	Capacity	Current	ENROLLMENT PROJECTIONS									
		2024/25	2025/26	2026/27	2027/28	2028/29	2029/30	2030/31	2031/32	2032/33	2033/34	2034/35
LAKE BELTON MIDDLE SCHOOL	916	802	766	728	720	720	732	677	634	609	634	670
NORTH BELTON MIDDLE SCHOOL	1,000	981	1,009	1,043	1,038	1,022	1,002	973	978	988	1,028	1,058
SOUTH BELTON MIDDLE SCHOOL	1,000	663	693	724	731	731	732	722	703	704	736	758
BELTON MIDDLE SCHOOL	971	659	687	671	651	610	607	585	575	578	604	629
MIDDLE SCHOOL TOTALS	3,887	3,105	3,155	3,166	3,140	3,083	3,073	2,957	2,890	2,879	3,002	3,115
Middle School Absolute Change		-1	50	11	-26	-57	-10	-116	-67	-11	123	113
Middle School Percent Change		-0.03%	1.61%	0.35%	-0.82%	-1.82%	-0.32%	-3.77%	-2.27%	-0.38%	4.27%	3.76%
BELTON HIGH SCHOOL	2,607	1,767	1,756	1,748	1,719	1,746	1,745	1,733	1,744	1,704	1,652	1,643
BELTON NEW TECH HIGH SCHOOL	500	290	274	252	238	243	246	243	242	240	230	226
LAKE BELTON HIGH SCHOOL	2,500	2,310	2,305	2,365	2,391	2,423	2,411	2,407	2,368	2,364	2,282	2,218
HIGH SCHOOL TOTALS	5,607	4,367	4,335	4,365	4,348	4,412	4,402	4,383	4,354	4,308	4,164	4,087
High School Absolute Change		19	-32	30	-17	64	-10	-19	-29	-46	-144	-77
High School Percent Change		0.44%	-0.73%	0.69%	-0.39%	1.47%	-0.23%	-0.43%	-0.66%	-1.06%	-3.34%	-1.85%
BELL COUNTY JJAEP	0	35	35	35	35	35	35	35	35	35	35	35
ALTERNATIVE CAMPUS TOTALS		35	35	35	35	35	35	35	35	35	35	35
DISTRICT TOTALS	17,344	13,704	13,584	13,596	13,605	13,691	13,779	13,894	14,008	14,087	14,226	14,395
District Absolute Change		-104	-120	12	9	86	88	115	114	79	139	169
District Percent Change		-0.76%	-0.88%	0.09%	0.07%	0.63%	0.64%	0.83%	0.82%	0.56%	0.99%	1.19%

Green box = 95% capacity
Yellow box = over capacity



Ten Year Forecast by Grade Level – Mid

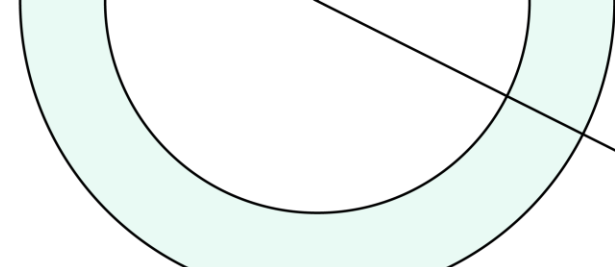


Year	EE	PK	K	1st	2nd	3rd	4th	5th	6th	7th	8th	9th	10th	11th	12th	Total	Total Growth	% Growth
2020/21	61	304	900	893	883	886	900	924	971	980	1,080	1,033	1,030	915	849	12,609	423	3.5%
2021/22	63	378	876	954	974	913	958	969	993	1,045	1,056	1,226	1,048	1,027	846	13,326	717	5.7%
2022/23	72	453	895	936	974	1,016	975	984	1,011	999	1,041	1,148	1,152	1,029	959	13,644	318	2.4%
2023/24	93	426	898	928	955	994	1,047	1,013	1,008	1,055	1,043	1,157	1,073	1,120	998	13,808	164	1.2%
2024/25	92	398	805	914	949	969	1,004	1,066	1,024	1,035	1,058	1,148	1,133	1,023	1,086	13,704	-104	-0.8%
2025/26	92	388	857	863	948	991	1,007	1,038	1,082	1,058	1,049	1,161	1,113	1,097	987	13,731	27	0.2%
2026/27	92	400	911	917	887	980	1,021	1,032	1,032	1,124	1,077	1,157	1,114	1,072	1,056	13,872	141	1.0%
2027/28	92	420	924	988	948	928	1,019	1,054	1,038	1,070	1,138	1,183	1,120	1,072	1,032	14,026	154	1.1%
2028/29	92	416	964	994	1,019	985	962	1,053	1,077	1,075	1,086	1,252	1,143	1,080	1,034	14,232	206	1.5%
2029/30	92	434	1,001	1,030	1,023	1,054	1,016	988	1,097	1,116	1,091	1,194	1,206	1,101	1,042	14,485	253	1.8%
2030/31	92	450	1,028	1,074	1,064	1,058	1,094	1,046	989	1,136	1,132	1,200	1,154	1,161	1,062	14,740	256	1.8%
2031/32	92	463	1,061	1,096	1,102	1,097	1,090	1,121	1,036	1,026	1,153	1,245	1,158	1,112	1,119	14,971	230	1.6%
2032/33	92	477	1,088	1,131	1,122	1,127	1,121	1,111	1,124	1,076	1,040	1,268	1,200	1,116	1,072	15,165	195	1.3%
2033/34	92	490	1,107	1,161	1,155	1,146	1,150	1,146	1,124	1,165	1,093	1,144	1,224	1,155	1,076	15,428	262	1.7%
2034/35	92	498	1,137	1,181	1,189	1,183	1,173	1,176	1,161	1,165	1,182	1,202	1,104	1,180	1,113	15,736	309	2.0%

Yellow box = largest grade per year
Green box = second largest grade per year



Ten Year Forecast by Campus – Mid

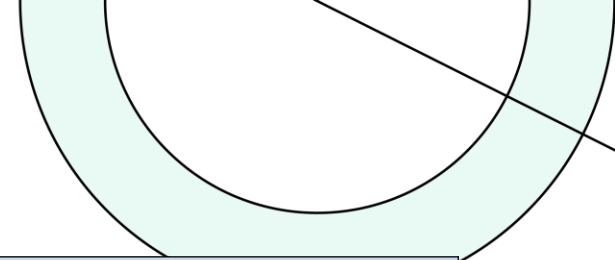


Campus	Capacity	Current	ENROLLMENT PROJECTIONS									
		2024/25	2025/26	2026/27	2027/28	2028/29	2029/30	2030/31	2031/32	2032/33	2033/34	2034/35
BELTON EARLY CHILDHOOD	628	490	480	492	512	508	526	542	555	569	582	590
EARLY CHILDHOOD TOTALS	628	490	480	492	512	508	526	542	555	569	582	590
BURRELL ELEMENTARY	800	472	520	567	616	653	692	733	747	748	751	759
CHARTER OAK ELEMENTARY	800	606	629	636	627	645	664	683	690	699	715	726
CHISHOLM TRAIL ELEMENTARY	792	760	741	740	750	739	743	764	781	796	813	827
HIGH POINT ELEMENTARY	792	563	543	522	513	531	520	542	561	576	590	608
JOE PIRTLE ELEMENTARY	792	570	578	590	586	602	606	638	673	706	742	778
LAKWOOD ELEMENTARY	792	576	561	543	535	515	518	528	539	544	551	557
LEON HEIGHTS ELEMENTARY	265	183	174	166	163	158	158	163	168	173	180	187
HUBBARD BRANCH ELEMENTARY	800	516	533	556	599	649	696	753	802	840	885	929
SOUTHWEST ELEMENTARY	540	416	419	430	453	466	485	503	522	518	511	517
SPARTA ELEMENTARY	685	549	517	512	511	517	515	523	530	530	534	536
TARVER ELEMENTARY	792	496	489	486	508	502	515	534	554	570	593	615
ELEMENTARY TOTALS	7,850	5,707	5,704	5,748	5,861	5,977	6,112	6,364	6,567	6,700	6,865	7,039
Elementary Absolute Change		-59	-3	44	113	116	135	252	203	133	165	174
Elementary Percent Change		-1.02%	-0.05%	0.77%	1.97%	1.98%	2.26%	4.12%	3.19%	2.03%	2.46%	2.53%

Green box = 95% capacity
Yellow box = over capacity



Ten Year Forecast by Campus – Mid



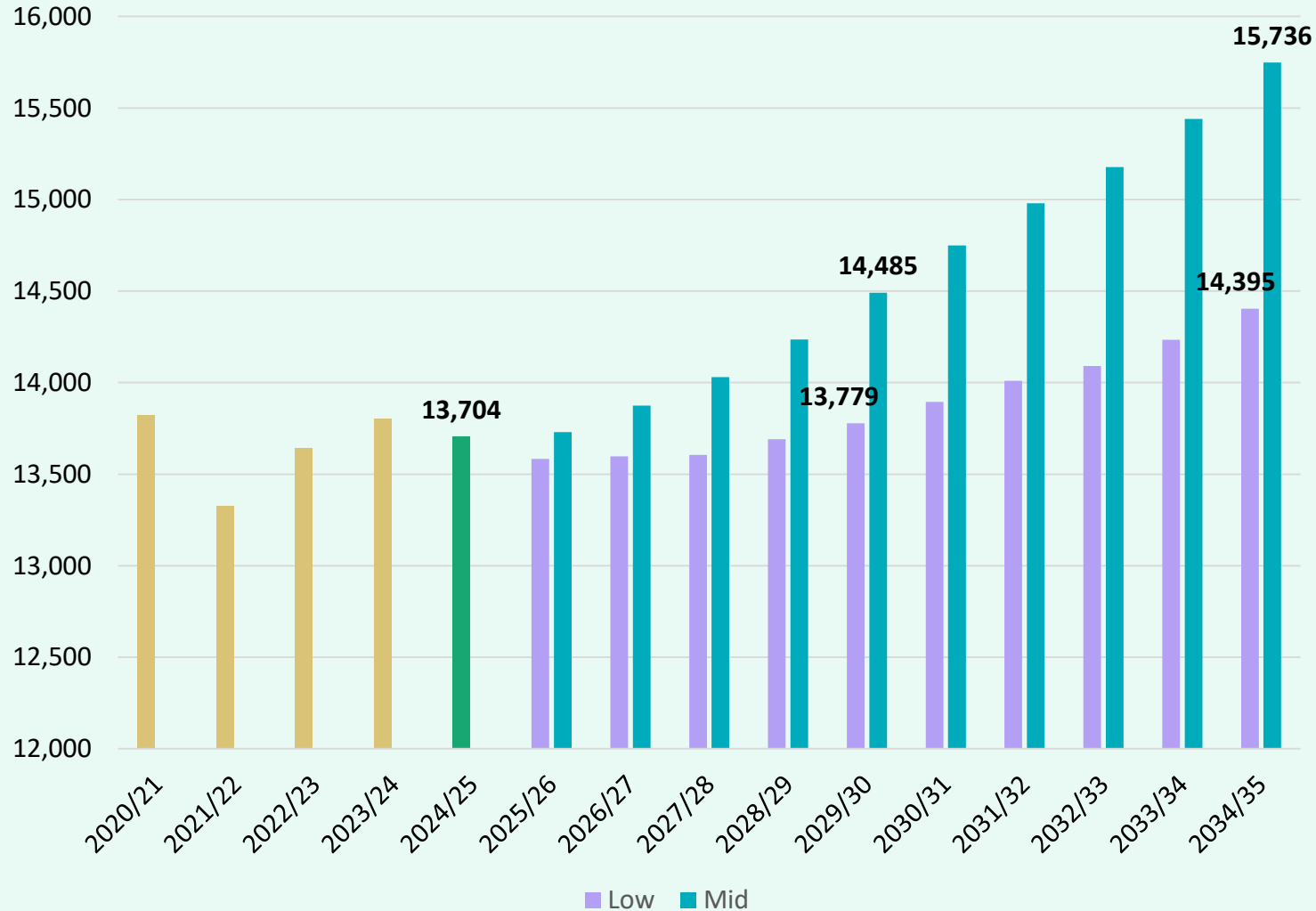
Campus	Capacity	Current	ENROLLMENT PROJECTIONS									
		2024/25	2025/26	2026/27	2027/28	2028/29	2029/30	2030/31	2031/32	2032/33	2033/34	2034/35
LAKE BELTON MIDDLE SCHOOL	916	802	772	741	740	748	776	732	694	677	713	757
NORTH BELTON MIDDLE SCHOOL	1,000	981	1,016	1,061	1,073	1,077	1,086	1,078	1,092	1,112	1,156	1,189
SOUTH BELTON MIDDLE SCHOOL	1,000	663	697	735	750	763	782	797	783	794	827	847
BELTON MIDDLE SCHOOL	971	659	692	684	671	638	648	638	634	645	674	703
MIDDLE SCHOOL TOTALS	3,887	3,105	3,177	3,221	3,234	3,226	3,292	3,245	3,203	3,228	3,370	3,496
Middle School Absolute Change		-1	72	44	13	-8	66	-47	-42	25	142	126
Middle School Percent Change		-0.03%	2.32%	1.38%	0.40%	-0.25%	2.05%	-1.43%	-1.29%	0.78%	4.40%	3.74%
BELTON HIGH SCHOOL	2,607	1,767	1,756	1,752	1,732	1,775	1,792	1,797	1,846	1,829	1,814	1,844
BELTON NEW TECH HIGH SCHOOL	500	290	274	253	240	247	252	252	256	258	254	253
LAKE BELTON HIGH SCHOOL	2,500	2,310	2,305	2,371	2,412	2,464	2,476	2,505	2,509	2,546	2,508	2,479
HIGH SCHOOL TOTALS	5,607	4,367	4,335	4,376	4,384	4,486	4,520	4,554	4,611	4,633	4,576	4,576
High School Absolute Change		19	-32	41	8	102	34	34	57	22	-57	0
High School Percent Change		0.44%	-0.73%	0.95%	0.18%	2.33%	0.76%	0.75%	1.25%	0.48%	-1.23%	0.00%
BELL COUNTY JJAEP	0	35	35	35	35	35	35	35	35	35	35	35
ALTERNATIVE CAMPUS TOTALS		35	35	35	35	35	35	35	35	35	35	35
DISTRICT TOTALS	17,344	13,704	13,731	13,872	14,026	14,232	14,485	14,740	14,971	15,165	15,428	15,736
District Absolute Change		-104	27	141	154	206	253	256	230	195	262	309
District Percent Change		-0.25%	0.20%	1.03%	1.11%	1.47%	1.78%	1.76%	1.56%	1.30%	1.73%	2.00%

Green box = 95% capacity
Yellow box = over capacity



Key Takeaways

Belton ISD Enrollment Projections



- Belton ISD enrollment decreased by 104 students between 2023/24 and Fall 2024/25. The Kindergarten Class this year is much lower than it has been in the last 5 years.
- Based on the current sales, BISD is forecasted to close more than 1,480 homes by the end of 2024
- The district has 8 future subdivisions with over 4,950 lots in the planning stages
- Groundwork is underway on more than 340 lots within 3 subdivisions
- Belton ISD’s enrollment is anticipated to be within a range of 13,750 to 14,400 within the next five years and is anticipated to be within a range between 14,400 to 15,750 within the next ten years