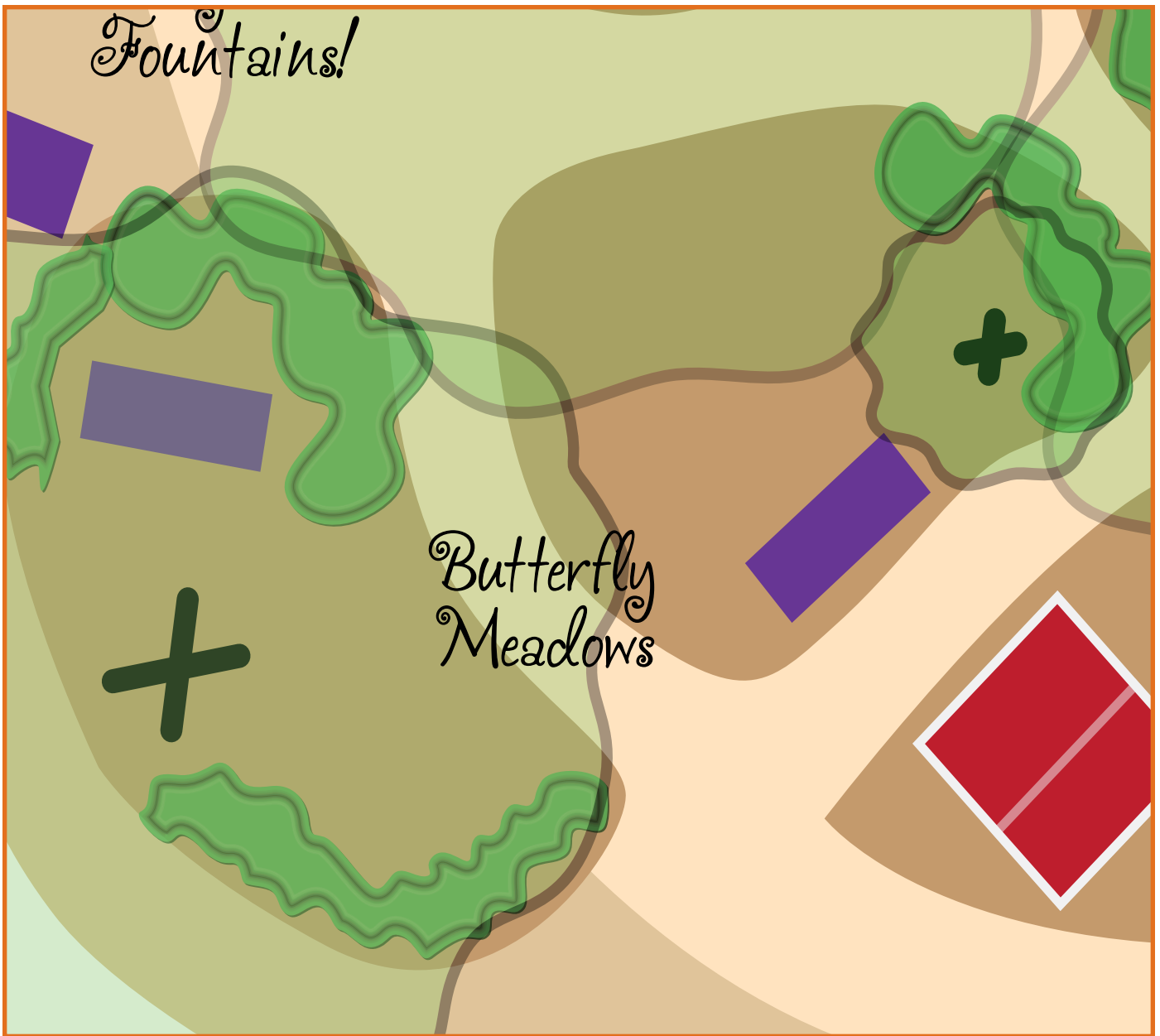




*He that
plants
a tree
Loves others
besides
himself.*



Butterfly Meadow

Our goal is to attract every butterfly native to North Texas! We are incorporating 5 Butterfly Bushes, a Texas Lilac Vitex tree, Shasta Daisies, Dianthus, Baptisia, Joe Pye Weed and Lantana.

Phase 3

Butterfly Meadows

Established Fall 2012

Area Size - 30'x19' (570 sq ft)

Total Budget – \$1,270

Plant Budget – \$515

Seating Budget – \$430 • Hardscape Budget – \$325

Plant List

Texas Lilac Vitex



height - 12-15 ft spread - 24-30 ft qty - 1
 colors - pink, purple, blue & white

The Vitex tree is an attractive tree, with clusters of colorful flower spikes in Summer to Fall. It has aromatic gray-green leaves, and is a rapid grower in the desert, and slower in cooler climates. It can reach heights of 15 to 25 feet, and prefers Summer heat for more colorful blooms. Needs pruning to develop trunk structure.

Treeland Nursery
 30 gallon - 5'H x 4' W

delivered/planted \$180.00



Butterfly Bush

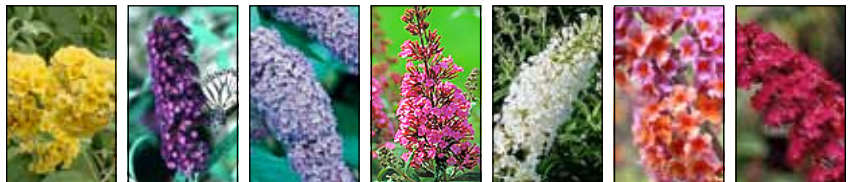


height - 4-6 ft spread - 3-4 ft qty - 5
 colors - yellow, dark purple, lavender, & multi - flower length ranges 3"-10"

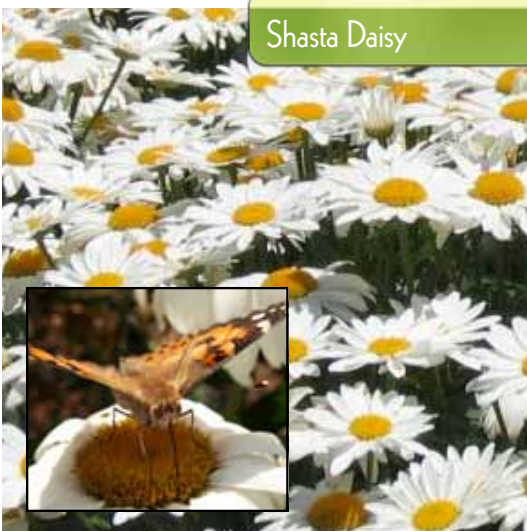
The butterfly bush grows flowers that look like a bottle brush with the stem in the center and flowers coming off on all sides. Hummingbirds and beneficial insects, as well as butterflies, are seduced by the nectar rich flowers of these bushes. Cut back old flowering stems close to the base in early spring.

Spring Hill Nursery
 4" pot

(\$15 each) \$75.00



Shasta Daisy



height - 3-4 ft spread - 2-3 ft qty - flat
 colors - white "Becky" are drought-tolerant

Strong's Nursery - Carrollton, TX
 Flat

\$18.00

Funny name, beautiful, classic flower. "Becky" shasta daisy flowers profusely. This clump-forming perennial flower blooms June-September. In fact, it is its long blooming period that makes this cultivar especially attractive, along with its drought-tolerance. Becky shasta daisy flowers exhibit the classic "daisy pattern," with white petals radiating from a central yellow disk.

"Shasta" daisy is named after Mount Shasta in Northern California, not far from where this hybrid was developed by Luther Burbank. The word, "daisy" was originally "day's eye." An early metaphorical reference to the sun, "day's eye" was later applied to the sun-like appearance of this flower, with its central yellow disk surrounded by "rays."

Plant List



White Dutch Clover

height - 4-8 in spread - spreading qty - 1/4 lb seed
 colors - white

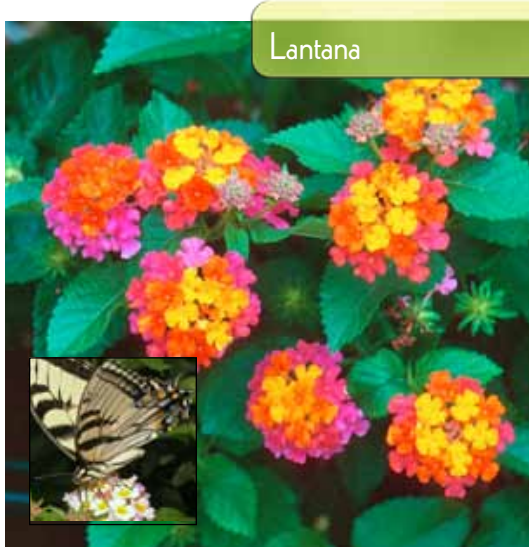
Dutch White clover is a perennial, but acts as a reseeding annual in the Lower South. It is an excellent reseeder because it flowers from March through early May. White clover germinates in 7 - 10 days, and grows to a height of 4- 8". It does need moisture at time of germination, but is drought tolerant once established. Nodules on the roots fix nitrogen from the air. Actually, up to 1/3 the nitrogen your lawn needs can be obtained from white dutch clover! Grows vigorously even in poor clay subsoil around new home construction.

Dutch White clover is an effective alternative to lawns because:

- it is relatively low-growing, at about 4 - 8" high
- tolerates low mowing well
- stays green through droughty periods of summer

www.outsidepride.com

1/4 lb seed (sow late winter or early spring and in late-summer autumn) \$3.49



Lantana

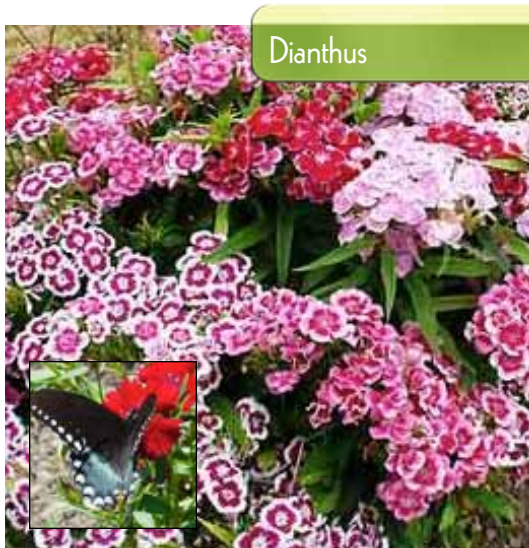
height - 2-3 ft spread - 6-8 ft qty - 2
 colors - Pink, magenta, red-orange, bright yellow & purple

Lantana is valued for its long season of reliable bloom. Many cultivars display multiple colors within each two inch wide disc shaped flower head. The flowers attract butterflies and hummingbirds. Foliage is coarse, lightly toothed and rough to the touch. Crushed leaves have a pungent scent, so you may want to locate where the plant it will not spread across walks if the odor offends you. Grow lantana in full sun. Lantana is tolerant of all soil types provided they are well drained and slightly acid.

Spring Hill Nursery

1 gallon pot

(\$25 each) \$50.00



Dianthus

height - 6 in spread - 12 in qty - flat
 colors - red, white, pink & purple

Dianthus are hardy, herbaceous, perennial plants that produce bright, fragrant blooms. They are easy to grow and prefer full sun, moderate climates, and rich, well drained soil. The evergreen foliage and the long flowering season allows for interesting year-around displays of foliage in the winter and flowers in spring, summer, and fall. Dianthus are used in containers, mixed plantings, cut flower gardens, scented gardens, butterfly gardens and borders.

Strong's Nursery - Carrollton, TX

Flat

\$18.00



Plant List

Joe Pye Weed



height - 5-7 ft spread - 3-4 ft qty - 4
 colors - white, pink or purplish-mauve

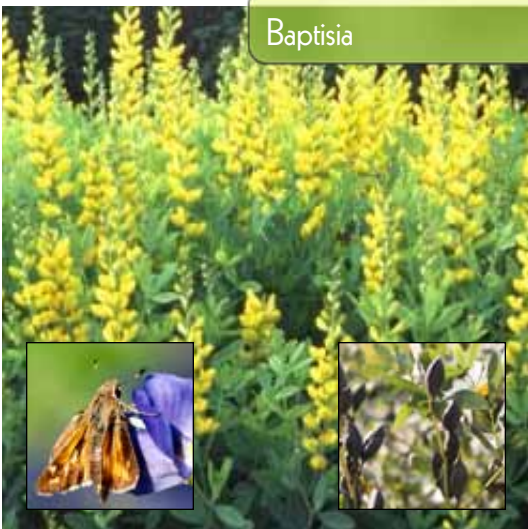
Spotted Joe-Pye weed is a "weed" only in the sense that it is a wild plant (in North America). "Wildflower" would be a better name for a plant with such an attractive mauve flower and imposing presence (up to 6 feet tall!). The stems often come in a solid purple that offers an even more striking look. These sturdy stems make a good cut flower. Flower heads are flattish; leaves grow in whorls and will eventually spread to form a dense stand. They attract butterflies, including tiger swallowtails and black swallowtails.

www.gardenharvestsupply.com
 4" pot

(\$4.30 ea) \$17.20



Baptisia



height - 2-3 ft spread - 4-5 ft qty - 3
 colors - lavender, yellow-orange, white, purple & copper

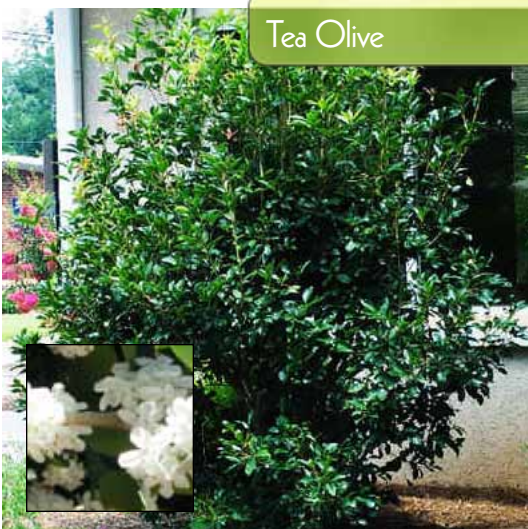
Baptisia australis, or blue false indigo is a native American beauty. In fact, Europeans used to pay Americans to grow it, for the dye they made from the blue flowers. That's why it's called False Indigo. Indigo was expensive and *Baptisia* grew like a weed. *Baptisia* has an upright, shrubby form. Pea-like blossoms start as plump, tight buds, borne on long racemes and are a vivid blue, often with flecks of cream or yellow. They are followed by seed pods which persist and turn black and are often used in flower arranging.

www.gardenharvestsupply.com
 4" pot

(\$4.30 ea) \$12.90



Tea Olive



height - 10 ft spread - 6-8 ft qty - 1
 colors - white

The Fragrant Tea Olive will adapt to any soil but sand. Its easy to grow and will tolerate some drought, once established. It isn't prone to attack from pests or diseases with adequate moisture. You can prune the shrub to a desired size or let it grow to create some seclusion. Morning sun or high, shifting shade is the lighting preferred by the Tea Olive. The Tea Olive shrub begins blooming in the fall, blooms heavily in the winter, lasting into the spring.

www.brighterblooms.com
 3 gallon pot

\$39.95

www.tytyga.com
 7 gallon pot

\$129.95

Hardscape List

Seating



Carolina Park Bench

qty - 2

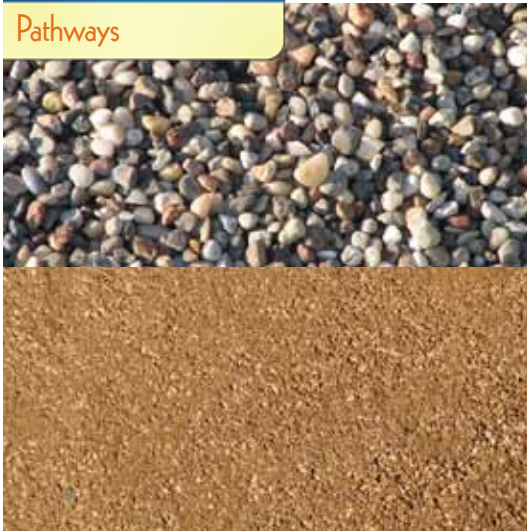
Dimensions - 49"W x 19.25"D x 30"H

Decorate your outdoor living area with this attractive Carolina Park Bench. It is made from heavy-duty cast iron and hardwood slats. The frame is powder coated with a rust resistant Bronze finish. Weighs 57 lbs. It is easy to assemble and includes all necessary hardware

Home Depot

(\$89.98 ea) - \$179.96

Pathways



Decorative Stone Pea Pebbles 3/8"

qty - 345 sq ft

Dimensions - 16 cubic yards (4 inch depth)

Can be used for many landscaping applications, including around trees, shrubs, decks and driveways. The natural, small, river-washed stone will not fade, crack or blow away. Unlike wood mulches, it will not attract wood pests, such as termites and ants.

Stone Yard

\$244.00

Decomposed Granite

qty - 72 sq ft

Dimensions - 8.5 cubic yards (4 inch depth)

As granite rock decomposes over millions of years it becomes what is commonly known as decomposed granite gravel. It packs well yet lets water drain through. It is high in trace minerals and environmentally safe.

Stone Yard

\$78.00

Boulders



Moss Rock

qty - 4

Dimensions - 1 cubic foot = 110 lbs 2,000 lbs = 1 ton

example: 3'x3'x3' = 27 cu ft = 2,970 lbs

2,970 / 2000 = 1.5 tons x \$164 = \$243.50

Moss can make some garden elements and even entire gardens look and feel aged and established. Moss grows naturally in patches, likes the North side of objects, and takes readily to cracks and crevices.

Stone Yard

\$164.00 per ton

Delivery 1-20 tons

\$140.00