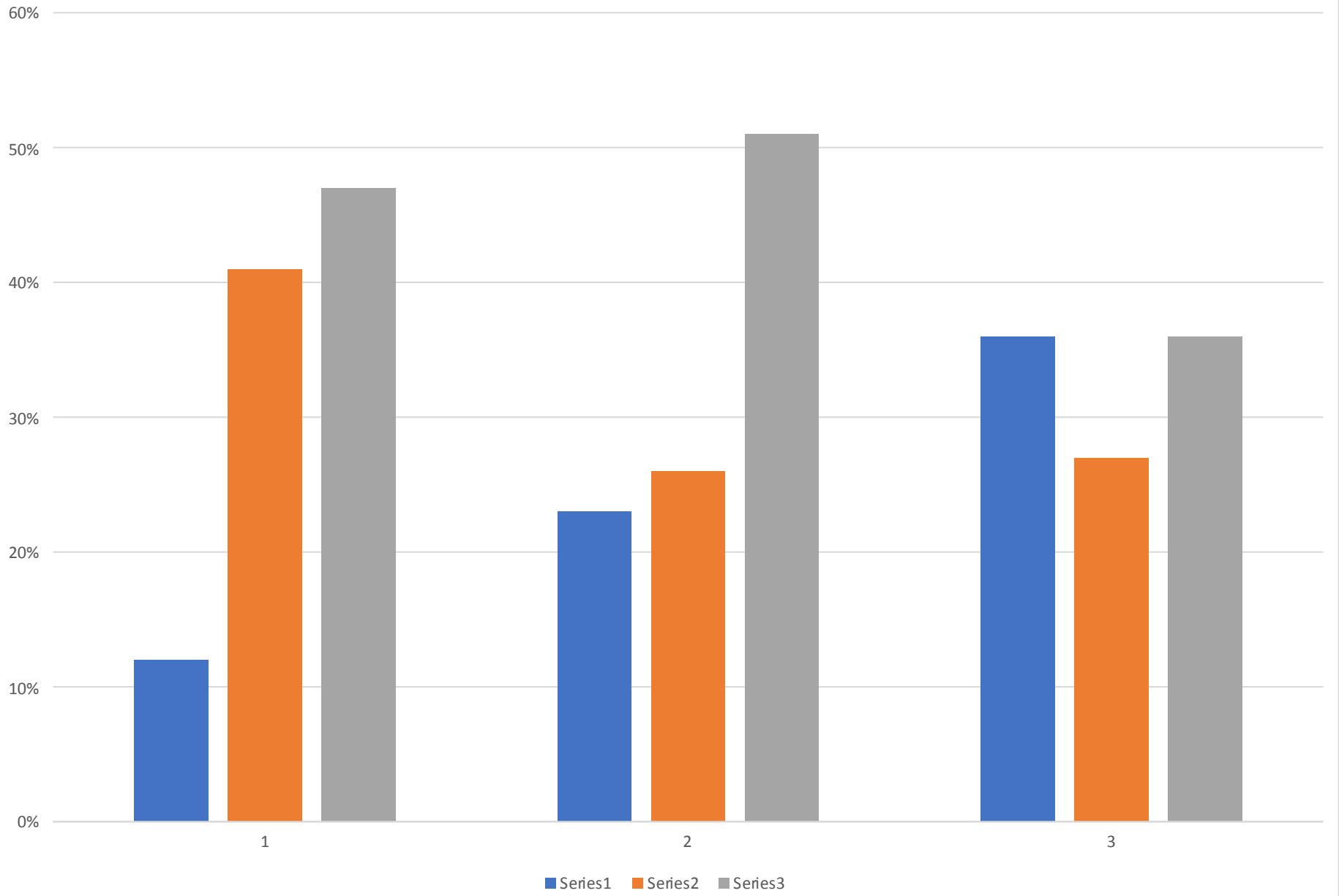


Chart Title



## 2019-2020 ISIP Data K-6

Month:	Sept. ELA	Oct. ELA	Nov. ELA	Jan. ELA	Feb. ELA
<b>Kindergarten</b>					
Tier 1	22%	31%	24%	35%	25%
Tier 2	39%	35%	46%	40%	39%
Tier 3	39%	34%	30%	25%	36%
<b>Grade 1</b>					
Tier 1	37%	41%	48%	53%	51%
Tier 2	26%	31%	37%	33%	40%
Tier 3	37%	28%	15%	14%	9%
<b>Grade 2</b>					
Tier 1	57%	64%	58%	60%	60%
Tier 2	27%	14%	14%	23%	17%
Tier 3	16%	22%	28%	17%	23%
<b>Grade 3</b>					
Tier 1	55%	65%	71%	72%	71%
Tier 2	31%	27%	21%	22%	20%
Tier 3	14%	8%	8%	7%	10%
<b>Grade 4</b>					
Tier 1	58%	48%	50%	64%	48%
Tier 2	22%	24%	21%	8%	19%
Tier 3	19%	28%	29%	28%	33%
<b>Grade 5</b>					
Tier 1	57%	46%	58%	62%	61%
Tier 2	18%	29%	21%	23%	20%
Tier 3	24%	24%	21%	15%	18%
<b>Grade 6</b>					
Tier 1	38%	35%	49%	50%	33%
Tier 2	33%	35%	33%	29%	48%
Tier 3	30%	30%	18%	21%	19%

## Math ISIP Data

Sept. Math	Oct. Math	Nov. Math	Jan. Math	Feb. Math
43%	48%	44%	54%	56%
23%	20%	25%	24%	29%
34%	32%	31%	22%	15%
51%	65%	56%	61%	58%
30%	20%	27%	25%	28%
19%	15%	16%	14%	14%
66%	69%	77%	70%	69%
26%	18%	17%	26%	25%
8%	12%	6%	4%	6%
55%	71%	71%	72%	74%
37%	16%	17%	9%	19%
8%	13%	13%	20%	7%
28%	40%	59%	36%	75%
53%	36%	17%	32%	25%
19%	24%	24%	32%	0%
12%	23%	36%	47%	62%
41%	26%	27%	19%	19%
47%	51%	36%	34%	19%
54%	57%	69%	70%	61%
18%	19%	15%	17%	13%
28%	24%	15%	13%	26%

colony



## 2019-2020 Star Data

Month:	Sept.	Oct.	Nov.	Jan.	Feb.
<b>Grade 7</b>					
<b>Tier 1</b>	16%	14%	17%	18%	16%
Tier 2	35%	28%	29%	27%	19%
Tier 3	49%	58%	54%	55%	66%
<b>Grade 8</b>					
<b>Tier 1</b>	15%	7%	16%	9%	10%
Tier 2	24%	41%	27%	33%	28%
Tier 3	61%	52%	58%	58%	62%
<b>Grade 9</b>					
<b>Tier 1</b>	17%	17%	18%	16%	15%
Tier 2	23%	17%	28%	34%	32%
Tier 3	57%	66%	54%	50%	56%
<b>Grade 10</b>					
<b>Tier 1</b>	5%	5%	5%	11%	16%
Tier 2	23%	24%	23%	23%	20%
Tier 3	72%	70%	72%	66%	64%
<b>Grade 11</b>					
<b>Tier 1</b>	13%	8%	14%	21%	18%
Tier 2	25%	38%	21%	28%	36%
Tier 3	63%	54%	64%	51%	45%
<b>Grade 12</b>					
<b>Tier 1</b>	14%	18%	14%	15%	14%
Tier 2	29%	41%	29%	30%	36%
Tier 3	57%	41%	57%	60%	50%

## Math Star Data

Month:	Sept	Oct	Nov.	Jan.	Feb.
<b>Grade 7</b>					
	24%	39%	24%	56%	39%
	33%	28%	33%	19%	31%
	42%	33%	42%	26%	30%
<b>Grade 8</b>					
	29%	30%	29%	30%	43%
	32%	42%	32%	51%	30%
	39%	28%	39%	19%	27%
<b>Grade 9</b>					
	25%	19%	27%	40%	26%
	36%	28%	37%	36%	43%
	39%	53%	36%	23%	31%
<b>Grade 10</b>					
	40%	32%	40%	48%	27%
	30%	27%	30%	29%	52%
	30%	41%	30%	22%	21%
<b>Grade 11</b>					
	38%	44%	45%	33%	55%
	8%	22%	10%	42%	27%
	54%	33%	45%	25%	18%
<b>Grade 12</b>					
	33%	67%	33%	0%	14%
	50%	33%	50%	50%	29%
	17%	0%	17%	50%	57%



Tier 3

64% 57%

54% 50%

Grade 9	Grade 10
5%	5%

Grade 9	Grade 10
0%	11%

Grade 9	Grade 10

Tier 1

5% 5%

0% 11%

Tier 2

23% 22%

8% 23%

Tier 3

71% 73%

92% 66%

Grade 10	Grade 11
11%	13%

Grade 10	Grade 11
18%	21%

Grade 10	Grade 11

Tier 1

11% 13%

18% 21%

Tier 2

18% 25%

23% 28%

Tier 3

71% 63%

59% 51%

Grade 11	Grade 12
14%	14%

Grade 11	Grade 12
21%	15%

Grade 11	Grade 12

Tier 1

14% 14%

21% 15%

Tier 2

18% 29%

26% 30%

Tier 3

68% 57%

53% 60%