

ROBERTSON ST. INDUSTRIAL ST.

SKINNER ST.

WYE ST.

CROSS TIMBERS ST.

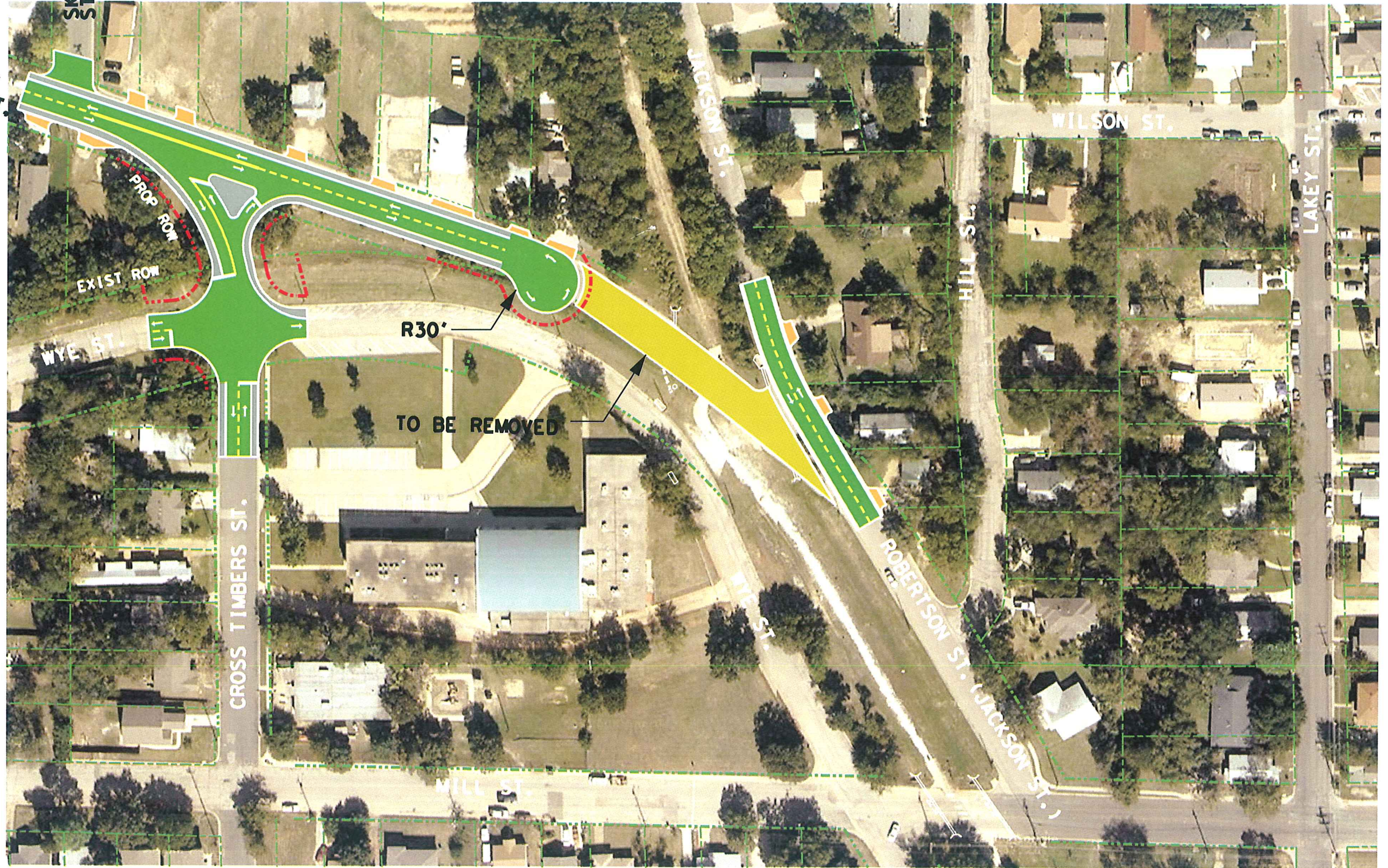
HILL ST.

JACKSON ST.

ROBERTSON ST. (JACKSON ST.)

WILSON ST.

LAKEY ST.



REV	DATE	DESCRIPTION	BY	ENG	CHK	APP	REV	DATE	DESCRIPTION	BY	ENG	CHK	APP

**LAN**  
 Lockwood, Andrews & Newnam, Inc.  
 A LEO A DALY COMPANY  
 8350 N. CENTRAL EXPRESSWAY  
 SUITE 1400  
 DALLAS, TEXAS 75206  
 214-522-8778



SCALE	AS SHOWN
DRAWN	
DESIGNED	
CHECKED	
IN CHARGE	
DATE	6/19/09

**DCTA PROPOSED ROBERTSON ST. CLOSURE**

CONTRACT	SHT NO.	REV