



NORTH SLOPE BOROUGH SCHOOL DISTRICT

M E M O R A N D U M

TO: Robyn Burke, President
Members of the School Board

THROUGH: David Vadiveloo, Chief School Administrator Dsv

THROUGH: Caitlin Santos, Director of Curriculum & Instruction CS

FROM: Ranel Gandia, Student Records Manager *RG*

Ian Acuna, Data Manager *IA*

DATE: March 1, 2024

SUBJECT: Enrollment and Attendance Report

Memo No. SB24-105
(Information Item)

NSBSD Strategic Plan Goal:

1.2 Engaged & Empowered by Learning - Attendance: Cultivate an environment where attendance is valued, encouraged, and supported and implement a culturally integrated calendar that is aligned across the district to increase attendance and expand options for students.

Issue Summary:

Research consistently shows that student attendance matters. Students with higher attendance rates are more likely to meet state academic standards, and graduate on time at higher rates. Educational outcomes reflect attendance even in the earliest grades, and then those gaps continue to widen into secondary (grades 6-12). While some students are more adversely affected by absences than others, it is clear that the effects of absences accumulate over time; attendance matters and every day counts. This is not to say that perfect attendance should be the goal ‘no matter what.’ We understand that students may miss school for a variety of reasons, and do not want to encourage sick children to attend when it is not appropriate to do so. In light of these factors, and the overwhelming amount of research, the district has set the attendance goal for all students at 80%.

K-12 Enrollment by Site			
School	Current Student Count	Attendance Report	22-23 February Student Count
Nunamiut School	92	83.41% (↑ 4.54%)	97
Tikiġaq School	220	72.07% (↑ 1.38%)	246
Nuiqsut Trapper School	139	71.50% (↑ 4.53%)	146
Kali School	82	87.27% (↑ 1.13%)	71
Aġak School	134	74.76% (↑ 1.97%)	156
Harold Kaveolook School	55	91.73% (↑ 12.48%)	54
Meade River School	78	79.97% (↑ 5.47%)	74
Barrow High School	256	73.14% (↑ 3.71%)	266
Eben Hopson Middle School	222	78.17% (↑ 2.68%)	236

Fred Ipalook Elementary School	425	82.11% (↑ 6.07%)	442
KIITA Learning Community	40	65.77% (↑ 10.61%)	40
Total	1743	77.66% (↑ 4.03%)	1828

K3 & K4 Enrollment by Site			
School	Current Student Count	Attendance Report	22-23 February Student Count
Nunamiut School	13	75.82% (↑ 16.38%)	15
Tikiġaq School	15	56.00% (↑ 11.07%)	26
Nuiqsut Trapper School	13	63.36% (↓ 8.53%)	20
Kali School	10	84.44% (↓ 14.86%)	14
Aġak School	10	59.31% (↑ 8.44%)	6
Harold Kaveolook School	8	80.71% (↑ 2.14%)	7
Meade River School	8	41.67% (↓ 10.30%)	8
Fred Ipalook Elementary School	100	61.60% (↑ 0.70%)	89
Total	177	63.25% (↑ 1.45%)	185

Night School Enrollment		
School	Current Student Count	22-23 February Student Count
KIITA Learning Community	16	14

The symbols (↑ and ↓) next to the data indicates if there was an increase or decrease since the last monthly report, the percentage next to the symbol indicates the amount it has increased or decreased by since the last monthly report.

Below, you will find two new charts. The first chart is a year over year enrollment summary starting with 2020. The second chart is showing year over year attendance throughout the school year. We provide this information so that trends can be seen, however please note that due to COVID related attendance policies, as well as the way that attendance was previously calculated, the attendance rate for the 2021-2022 school year is inflated. During that time, when a school was in “Red” status, or operating remotely, all attendance was “present.” During that school year, we also counted a student present daily, rather than period by period in Middle School and High School. This data is helpful however in order to see peaks and valleys by month.



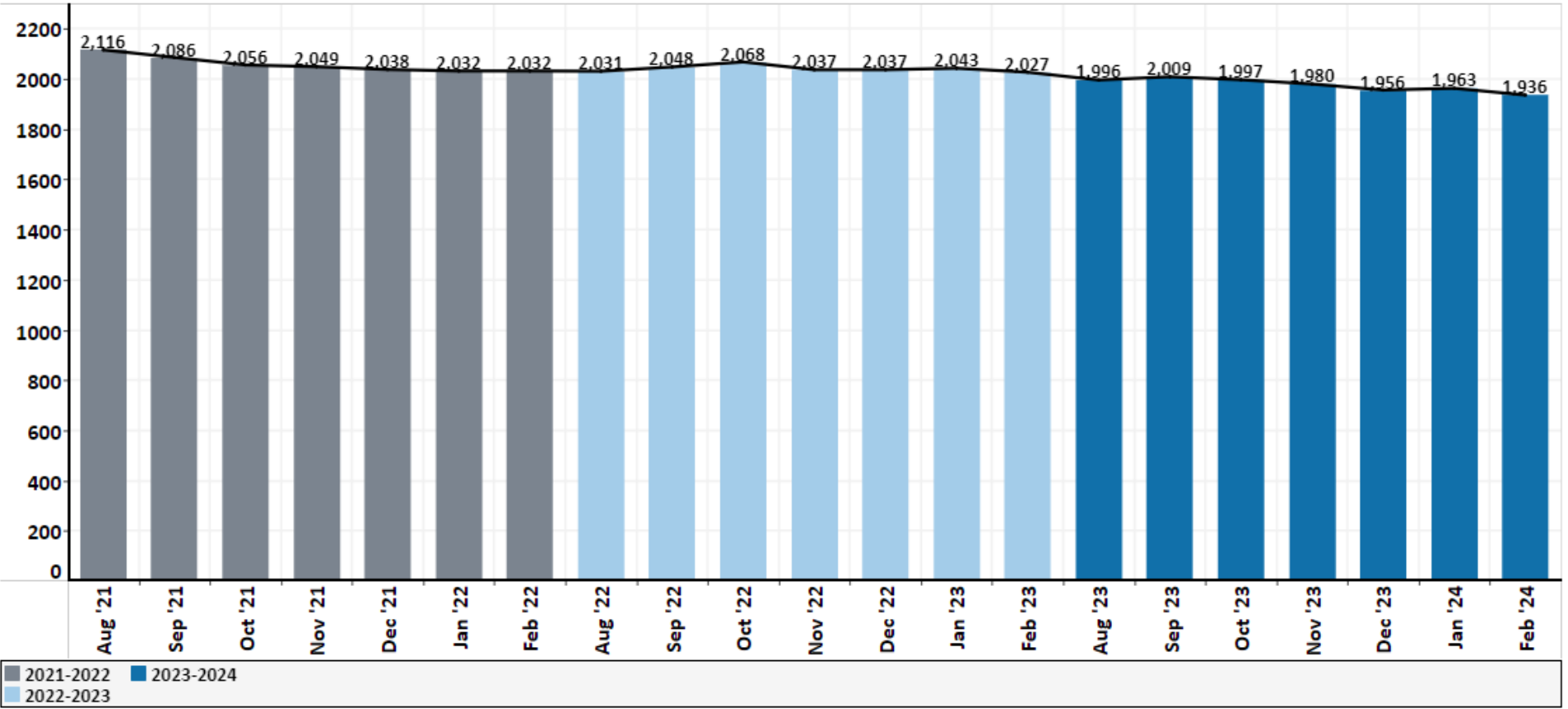
Enrollment Overview

North Slope Borough School District



Compare by Year
Year(s):
Month(s):
School:
Grade:

Year(s): 2023-2024, 2022-2023, 2021-2022 | **Month(s):** Aug, Sep, Oct and 4 more | **School:** NSBSD | **Grade:** K3, K4, K and 12 more



Month	2021-2022	2022-2023	2023-2024
Aug	2,116	2,031 (↓ 85)	1,996 (↓ 35)
Sep	2,086	2,048 (↓ 38)	2,009 (↓ 39)
Oct	2,056	2,068 (↑ 12)	1,997 (↓ 71)
Nov	2,049	2,037 (↓ 12)	1,980 (↓ 57)
Dec	2,038	2,037 (↓ 1)	1,956 (↓ 81)
Jan	2,032	2,043 (↑ 11)	1,963 (↓ 80)
Feb	2,032	2,027 (↓ 5)	1,936 (↓ 91)



Attendance Overview

North Slope Borough School District



Compare by Year

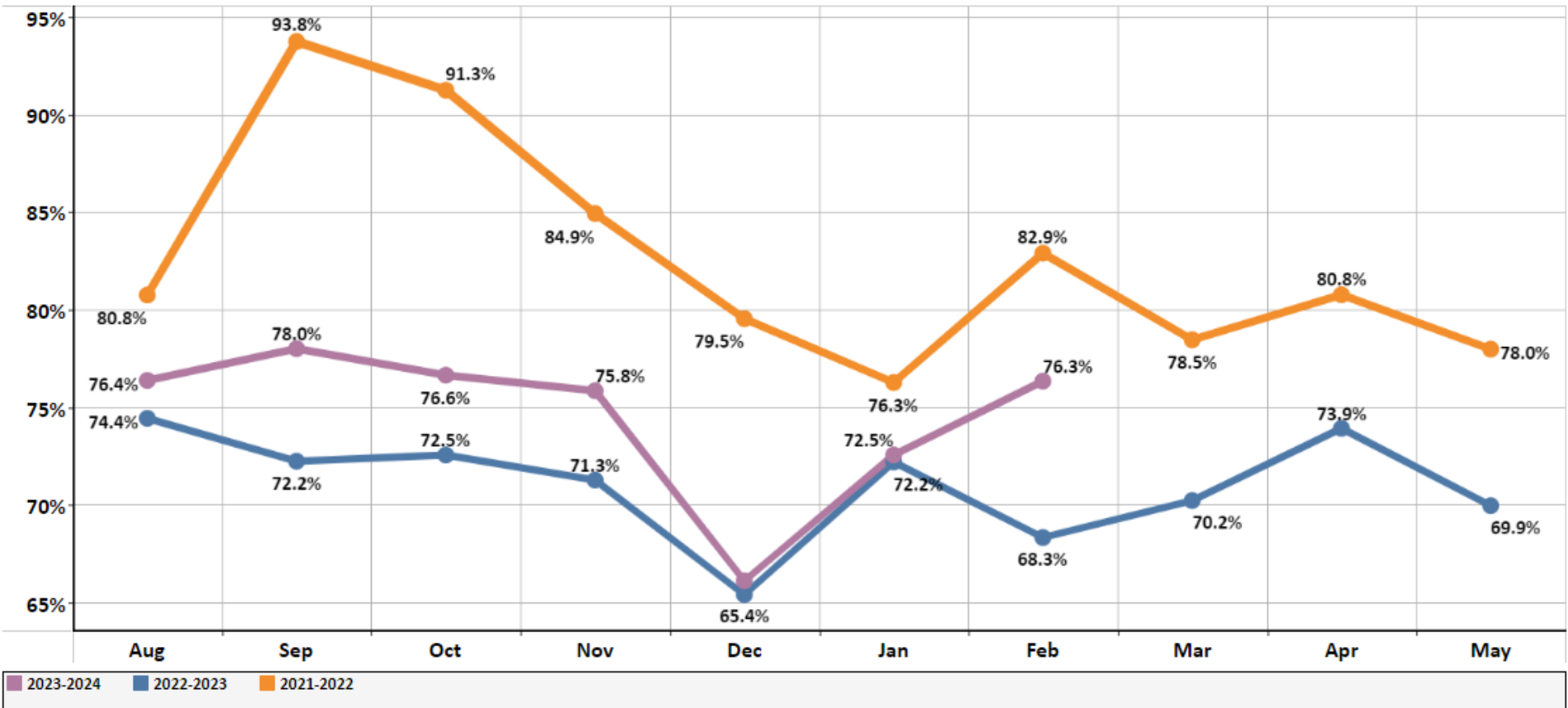
Year(s):
(Multiple values)

Month(s):
(All)

School:
NSBSD

Grade:
All Students (Pre-K - 12)

Year(s): 2023-2024, 2022-2023, 2021-2022 | Month(s): All | School: NSBSD | Grade: All Students (Pre-K - 12)



Month	2021-2022	2022-2023	2023-2024
Aug	80.75%	74.43% (↓ 6.33%)	76.37% (↑ 1.94%)
Sep	93.76%	72.22% (↓ 21.54%)	78.00% (↑ 5.78%)
Oct	91.26%	72.54% (↓ 18.72%)	76.64% (↑ 4.10%)
Nov	84.93%	71.26% (↓ 13.68%)	75.84% (↑ 4.58%)
Dec	79.54%	65.38% (↓ 14.16%)	66.09% (↑ 0.71%)
Jan	76.26%	72.19% (↓ 4.08%)	72.54% (↑ 0.36%)
Feb	82.90%	68.31% (↓ 14.59%)	76.34% (↑ 8.03%)
Mar	78.45%	70.21% (↓ 8.25%)	
Apr	80.77%	73.91% (↓ 6.85%)	
May	77.97%	69.94% (↓ 8.03%)	

Signature: DS Vadiveloo
DS Vadiveloo (Mar 24, 2024 12:27 AKDT)

Email: david.vadiveloo@nsbsd.org

Signature: 
Caitlin Santos (Mar 26, 2024 08:44 AKDT)

Email: Caitlin.Santos@nsbsd.org