

D 39°54'51"
 R 1356.38'
 L 944.90'
 CB S 70°24'30" E
 LC 925.91'

NORTH
 SCALE 1" = 50'

C.M. = CONTROLLING MONUMENT
 CIRF = CAPPED 1/2" IRON ROD
 FOUND STAMPED "4613"

CR 88

C1 POB

L7

CIRF
 C.M.

10' ONCOR ELECTRIC DELIVERY
 COMPANY, LLC EASEMENT
 17,151 SQ. FT.

75.000 ACRES

COLLIN COUNTY COMMUNITY COLLEGE DISTRICT
 CALLED 75.00 ACRES
 C.C. NO. 20090818001039820
 D.R.C.C.T.

CELINA DEVELOPMENT NORTH, LLC
 C.C. NO. 20160324000349770
 D.R.C.C.T.

SHELBY GLASS SURVEY, ABSTRACT NO. 346

S 39°32'55" W
 200.00'

CIRF
 C.M.

D 63°57'09"
 R 750.00'
 L 837.13'
 CB S 07°34'21" W
 LC 794.35'

MATCH LINE A

LINE TABLE		
LINE	BEARING	DISTANCE
L1	N 54°06'59" W	173.41'
L2	S 29°36'35" W	489.76'
L3	S 01°39'21" W	388.14'
L4	N 64°16'13" E	6.25'
L5	S 25°43'47" E	20.01'
L6	S 64°16'13" W	9.91'
L7	S 25°43'47" E	273.13'
L8	S 64°16'13" W	10.00'
L9	N 25°43'47" W	273.13'
L10	S 64°16'13" W	10.09'
L11	N 25°43'47" W	20.01'
L12	N 64°19'41" W	445.26'
L13	S 25°00'00" W	4.00'
L14	N 65°00'00" W	25.00'
L15	N 25°00'00" E	18.00'
L16	S 65°00'00" E	25.00'
L17	S 25°00'00" W	4.00'
L18	S 64°19'41" E	454.76'
L19	N 01°39'21" E	393.24'
L20	N 29°36'35" E	492.67'

CURVE TABLE						
CURVE	DELTA ANGLE	RADIUS	ARC LENGTH	CHORD BEARING	CHORD LENGTH	
C1	0°42'49"	803.57'	10.01'	S 57°59'34" E	10.01'	



SURDUKAN SURVEYING, INC.

P.O. BOX 126
 ANNA, TEXAS 75409
 (972) 924-8200
 TEXAS FIRM NO. 10069500



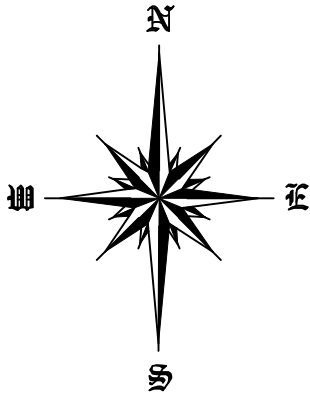
EXHIBIT "A"
 10' ONCOR ELECTRIC DELIVERY
 COMPANY, LLC EASEMENT
 COLLIN COUNTY COMMUNITY COLLEGE DISTRICT
 SHELBY GLASS SURVEY
 ABSTRACT NO. 346
 COLLIN COUNTY, TEXAS

SCALE 1" = 60'

DATE: SEPTEMBER 9, 2019

SHEET 1 OF 5

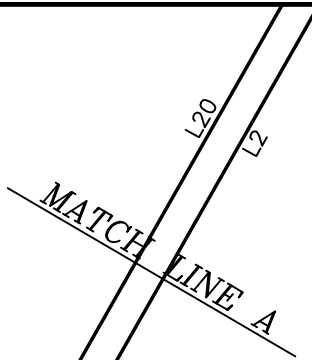
JOB NO. 2018-109



NORTH
SCALE 1" = 50'

C.M. = CONTROLLING MONUMENT
CIRF = CAPPED 1/2" IRON ROD
FOUND STAMPED "4613"

LINE TABLE		
LINE	BEARING	DISTANCE
L1	N 54°06'59" W	173.41'
L2	S 29°36'35" W	489.76'
L3	S 01°39'21" W	388.14'
L4	N 64°16'13" E	6.25'
L5	S 25°43'47" E	20.01'
L6	S 64°16'13" W	9.91'
L7	S 25°43'47" E	273.13'
L8	S 64°16'13" W	10.00'
L9	N 25°43'47" W	273.13'
L10	S 64°16'13" W	10.09'
L11	N 25°43'47" W	20.01'
L12	N 64°19'41" W	445.26'
L13	S 25°00'00" W	4.00'
L14	N 65°00'00" W	25.00'
L15	N 25°00'00" E	18.00'
L16	S 65°00'00" E	25.00'
L17	S 25°00'00" W	4.00'
L18	S 64°19'41" E	454.76'
L19	N 01°39'21" E	393.24'
L20	N 29°36'35" E	492.67'



10' ONCOR ELECTRIC DELIVERY
COMPANY, LLC EASEMENT
17,151 SQ. FT.

ABSTRACT NO. 346

SHELBY GLASS SURVEY,

D 63°57'09"
R 750.00'
L 837.13'
CB S 07°34'21" W
LC 794.35'

CELINA DEVELOPMENT NORTH, LLC
C.C. NO. 20160324000349770
D.R.C.C.T.

MATCH LINE B

75.000 ACRES
COLLIN COUNTY COMMUNITY COLLEGE DISTRICT
CALLED 75.00 ACRES
C.C. NO. 20090818001039820
D.R.C.C.T.

MATCH LINE C

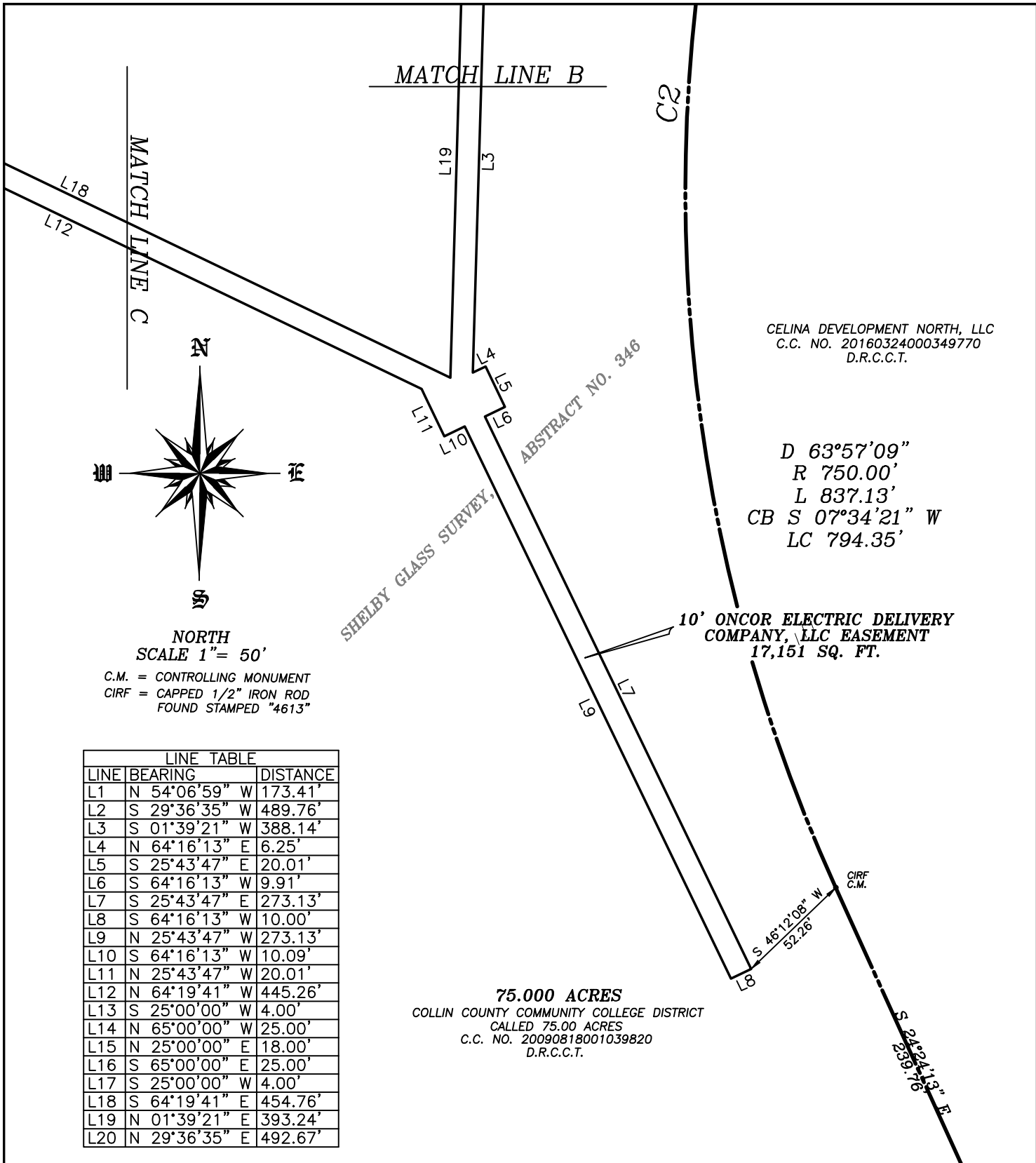


SURDUKAN SURVEYING, INC.

P.O. BOX 126
ANNA, TEXAS 75409
(972) 924-8200
TEXAS FIRM NO. 10069500



EXHIBIT "A"
10' ONCOR ELECTRIC DELIVERY
COMPANY, LLC EASEMENT
COLLIN COUNTY COMMUNITY COLLEGE DISTRICT
SHELBY GLASS SURVEY
ABSTRACT NO. 346
COLLIN COUNTY, TEXAS

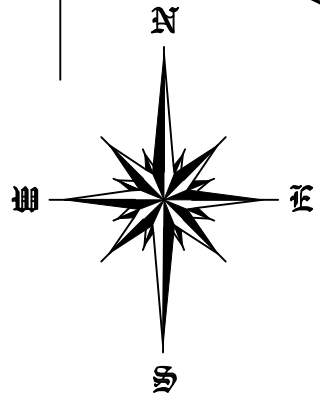


CELINA DEVELOPMENT NORTH, LLC
 C.C. NO. 20160324000349770
 D.R.C.C.T.

D 63°57'09"
 R 750.00'
 L 837.13'
 CB S 07°34'21" W
 LC 794.35'

10' ONCOR ELECTRIC DELIVERY
 COMPANY, LLC EASEMENT
 17,151 SQ. FT.

75.000 ACRES
 COLLIN COUNTY COMMUNITY COLLEGE DISTRICT
 CALLED 75.00 ACRES
 C.C. NO. 20090818001039820
 D.R.C.C.T.



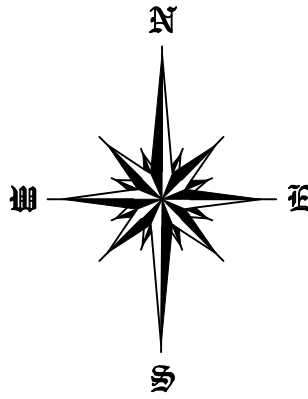
NORTH
 SCALE 1" = 50'
 C.M. = CONTROLLING MONUMENT
 CIRF = CAPPED 1/2" IRON ROD
 FOUND STAMPED "4613"

LINE TABLE		
LINE	BEARING	DISTANCE
L1	N 54°06'59" W	173.41'
L2	S 29°36'35" W	489.76'
L3	S 01°39'21" W	388.14'
L4	N 64°16'13" E	6.25'
L5	S 25°43'47" E	20.01'
L6	S 64°16'13" W	9.91'
L7	S 25°43'47" E	273.13'
L8	S 64°16'13" W	10.00'
L9	N 25°43'47" W	273.13'
L10	S 64°16'13" W	10.09'
L11	N 25°43'47" W	20.01'
L12	N 64°19'41" W	445.26'
L13	S 25°00'00" W	4.00'
L14	N 65°00'00" W	25.00'
L15	N 25°00'00" E	18.00'
L16	S 65°00'00" E	25.00'
L17	S 25°00'00" W	4.00'
L18	S 64°19'41" E	454.76'
L19	N 01°39'21" E	393.24'
L20	N 29°36'35" E	492.67'

SURDUKAN SURVEYING, INC.
 P.O. BOX 126
 ANNA, TEXAS 75409
 (972) 924-8200
 TEXAS FIRM NO. 10069500

EXHIBIT "A"
 10' ONCOR ELECTRIC DELIVERY
 COMPANY, LLC EASEMENT
 COLLIN COUNTY COMMUNITY COLLEGE DISTRICT
 SHELBY GLASS SURVEY
 ABSTRACT NO. 346
 COLLIN COUNTY, TEXAS

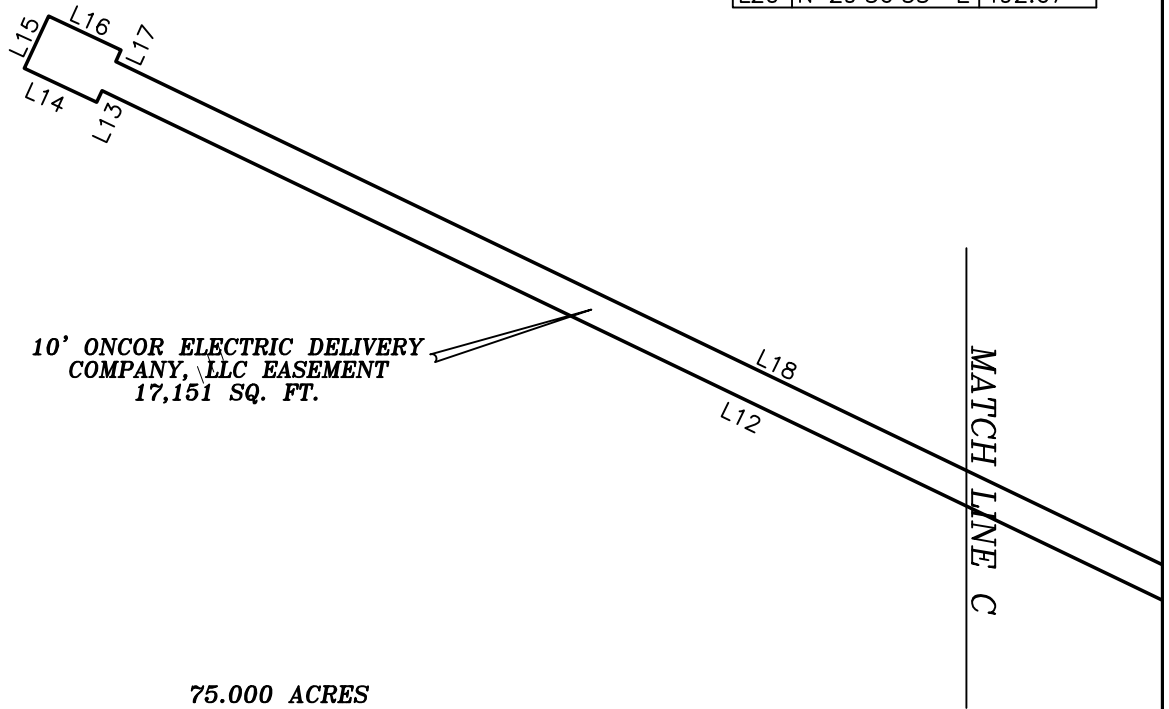
SHELBY GLASS SURVEY, ABSTRACT NO. 346



NORTH
SCALE 1" = 50'

C.M. = CONTROLLING MONUMENT
CIRF = CAPPED 1/2" IRON ROD
FOUND STAMPED "4613"

LINE TABLE		
LINE	BEARING	DISTANCE
L1	N 54°06'59" W	173.41'
L2	S 29°36'35" W	489.76'
L3	S 01°39'21" W	388.14'
L4	N 64°16'13" E	6.25'
L5	S 25°43'47" E	20.01'
L6	S 64°16'13" W	9.91'
L7	S 25°43'47" E	273.13'
L8	S 64°16'13" W	10.00'
L9	N 25°43'47" W	273.13'
L10	S 64°16'13" W	10.09'
L11	N 25°43'47" W	20.01'
L12	N 64°19'41" W	445.26'
L13	S 25°00'00" W	4.00'
L14	N 65°00'00" W	25.00'
L15	N 25°00'00" E	18.00'
L16	S 65°00'00" E	25.00'
L17	S 25°00'00" W	4.00'
L18	S 64°19'41" E	454.76'
L19	N 01°39'21" E	393.24'
L20	N 29°36'35" E	492.67'



10' ONCOR ELECTRIC DELIVERY
COMPANY, LLC EASEMENT
17,151 SQ. FT.

75.000 ACRES
COLLIN COUNTY COMMUNITY COLLEGE DISTRICT
CALLED 75.00 ACRES
C.C. NO. 20090818001039820
D.R.C.C.T.



SURDUKAN SURVEYING, INC.

P.O. BOX 126
ANNA, TEXAS 75409
(972) 924-8200
TEXAS FIRM NO. 10069500



EXHIBIT "A"
10' ONCOR ELECTRIC DELIVERY
COMPANY, LLC EASEMENT
COLLIN COUNTY COMMUNITY COLLEGE DISTRICT
SHELBY GLASS SURVEY
ABSTRACT NO. 346
COLLIN COUNTY, TEXAS

LEGAL DESCRIPTION
10' ONCOR ELECTRIC DELIVERY COMPANY, LLC EASEMENT

BEING situated in the Shelby Glass Survey, Abstract No. 348, Collin County, Texas and being across part of a 75.000 acre tract conveyed to the Collin County Community College District as recorded in County Clerks No. 20090818001039820 recorded in the Land Records of Collin County, Texas, and being more particularly described by metes and bounds as follows:

BEGINNING at a point for corner in the north line of said called 75.000 acre tract, said point being in the south Right Of Way line of County Road No. 88, said point being N 54°06'59" W a distance of 173.41' from a capped iron rod found for corner at the northeast corner of said 75.000 acre tract;

THENCE S 29°36'35" W a distance of 489.76' to a point for corner;

THENCE S 01°39'21" W a distance of 388.14' to a point for corner;

THENCE N 64°16'13" E a distance of 6.25' to a point for corner;

THENCE S 25°43'47" E a distance of 20.01' to a point for corner;

THENCE S 64°16'13" W a distance of 9.91' to a point for corner;

THENCE S 25°43'47" E a distance of 273.13' to a point for corner;

THENCE S 64°16'13" W a distance of 10.00' to a point for corner;

THENCE N 25°43'47" W a distance of 273.13' to a point for corner;

THENCE S 64°16'13" W a distance of 10.09' to a point for corner;

THENCE N 25°43'47" W a distance of 20.01' to a point for corner;

THENCE N 25°43'47" W a distance of 3.38' to a point for corner;

THENCE N 64°19'41" W a distance of 445.26' to a point for corner;

THENCE S 25°00'00" W a distance of 4.00' to a point for corner;

THENCE N 65°00'00" W a distance of 25.00' to a point for corner;

THENCE N 25°00'00" E a distance of 18.00' to a point for corner;

THENCE S 65°00'00" E a distance of 25.00' to a point for corner;

THENCE S 25°00'00" W a distance of 4.00' to a point for corner;

THENCE S 64°19'41" E a distance of 454.76' to a point for corner;

THENCE N 01°39'21" E a distance of 393.24' to a point for corner;

THENCE N 29°36'35" E a distance of 492.67' to a point for corner in the north line of said 75.000 acre tract and being in the south ROW line of said County Road No. 88, said point being in a non-tangent curve to the right;

THENCE along said curve to the right following the north line of said 75.000 acre tract and the south ROW line of said County Road No. 88 through a central angle of 00°42'49", a radius of 803.57', an arc length of 10.01', with a chord bearing of S 57°59'34" E, and a chord length of 10.01' to the POINT OF BEGINNING and containing 17,151 Square Feet or 0.394 Acres of land.

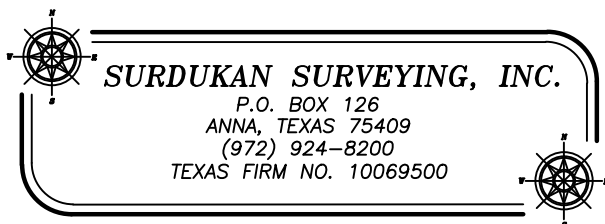
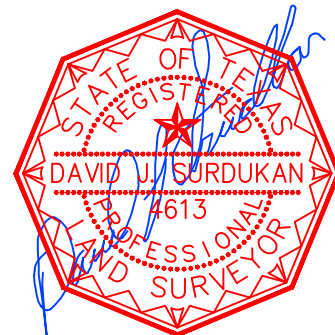


EXHIBIT "A"
10' ONCOR ELECTRIC DELIVERY
COMPANY, LLC EASEMENT
COLLIN COUNTY COMMUNITY COLLEGE DISTRICT
SHELBY GLASS SURVEY
ABSTRACT NO. 346
COLLIN COUNTY, TEXAS