



# ALPENA COUNTY MATERIALS MANAGEMENT PLANNING *PHASE 2*

Multi-county planning for 5-county region with Alpena  
County serving as Designated Planning Agency

May 14, 2024



---

Managing change  
in a resource-  
constrained world.



ORGANICS  
MANAGEMENT



WASTE  
RECOVERY



GLOBAL CORPORATE  
SUSTAINABILITY

since 1986

A woman with long dark hair is sitting at a wooden table, looking thoughtful with her hand to her chin. A silver laptop is open on the table to her left, and a white pen lies on the table in front of her. The background is softly blurred.

# MATERIALS MANAGEMENT PLANNING



# THE ROLE OF RRS FOR ALPENA COUNTY

- Serve as representative of Alpena County to:
  - evaluate the interest from surrounding counties in multicounty planning (Alcona, Iosco, Montmorency, Oscoda, Presque Isle)
  - evaluate the interest from surrounding counties to appoint Alpena County as Designated Planning Agency
  - seek alignment from interested counties for an interlocal agreement that sets expectations, establishes roles & responsibilities, and financial obligations

# FOUR-PHASE MMP PROCESS

## PHASE 1: PRE-PLANNING

- Coordination and communication with adjacent counties
- Aligning expectations and roles
- Iterative development of an interlocal agreement

## PHASE 2: PLANNING COMMITTEE & WORK PROGRAM

- Seating of a planning committee
- Development of a work program
- Request for funding from EGLE

## PHASE 3: PLANNING

- Public outreach & engagement
- Goal setting
- Data gathering to evaluate infrastructure, programs, policies, services, access
- Research
- Adoption

## PHASE 4: IMPLEMENTATION

- Development of programs
- Planning and design of infrastructure identified in the plan
- Communication
- Evaluation of impacts and effectiveness



# PROGRESS TO-DATE ON A MULTICOUNTY PLAN

- February: Discussions with Bill Peterson and John Kozlowski about next steps
- March 23: Coordinated and executed multi-county meeting a MOA Landfill
- March 28 : Presentation to NMMMA board on MMP process
- April 17: Presentation to Alcona County board meeting
- April 17: Presentation to Iosco County Recycling Advisory Board meeting
- April 23: Meeting with Alpena County board regarding ILA
- April 24: Presentation to NMMMA board on MMP process
- May 7/8: Requests to review and consider signing ILA sent to Alcona, Iosco, Montmorency, Oscoda clerks and board chairs. Also offered to present at meeting.
- Ongoing: Preparation of Interlocal Agreement with outside legal counsel
- Ongoing: Coordination and document review with Nico Tucker at NEMCOG

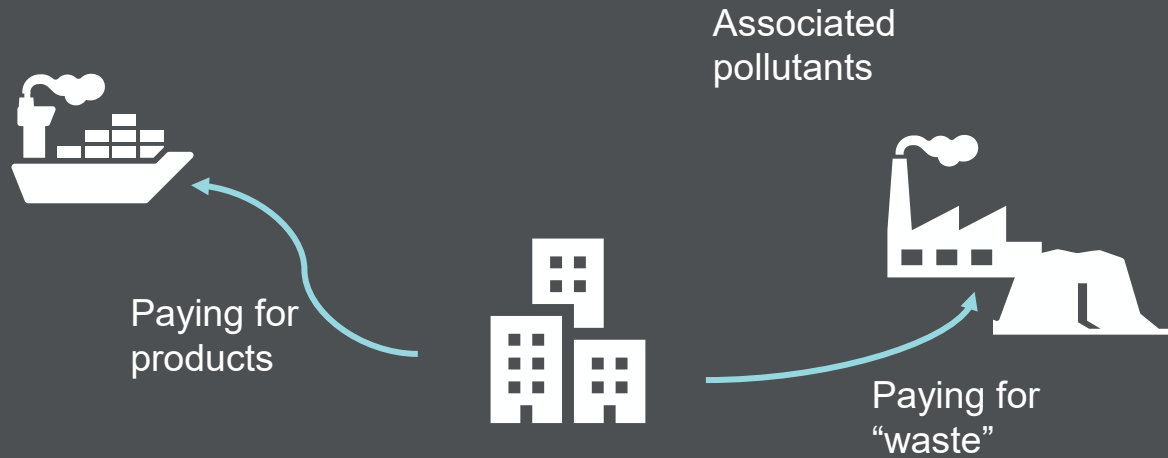


# NEXT STEP: PHASE 2

## **Coordinate and collaborate with NEMCOG to:**

- Appointment a Materials Management Planning Committee
- Develop a work program that frames the course of work to develop the plan, including costs, timeline, and key decision points
- Support all counties in the planning area to get the state funding they have been allocated

# OUR GOAL: KEEP VALUE IN YOUR COMMUNITY



Value Leaving Communities



Value Building Communities





ELISA SELTZER

Senior Consultant

231.838.8032

[seltzer@recycle.com](mailto:seltzer@recycle.com)

# TIMELINE: JAN 8 '24 MMP INITIATED BY EGLE DIRECTOR

## **PHASE 1:** By July 6, 2024 (180 days)

County must submit Notice of Intent to EGLE to assume responsibility for planning; document discussion with adjacent counties; if multi-county planning, include interlocal agreement; may assign DPA

## **PHASE 2:** 120/180 days after Phase 1

(120 days) County assigns DPA (if not already done); County appoints a planning committee

(+60 days) Planning committee & DPA develop and submit work program; counties submit request for funding

## **PHASE 3:** ~Jan 2025 through (no later than) ~July 2027

Develop plan and achieve 2/3 approval from all responding municipalities within planning area

## **PHASE 4:** 2027/2028/2029/2030

Implementation

# MULTI-COUNTY PLANNING WITH ALPENA AS HUB



- Every county plan in NE MI already identifies Alpena as the hub for the region for development of an efficient & effective recycling system.
- Alpena has made considerable investments to develop a regional recycling facility and ensure processing capacity for the region.
- Alpena has secured land, internal and external funding, and developed the Northeast Michigan Materials Management Authority (NMMMA)
- Aligning with this public sector solution brings many benefits and guards against the monopolization of service provision and increasing costs

# BENEFITS OF MULTI-COUNTY PLANS

	Planning alone	Multi county +	\$.50 Per capita	Annual Total	Over 3 years per county
<b>Alcona</b>	\$60,000	\$10,000	\$5,084	\$75,084	\$225,252
<b>Alpena</b>	\$60,000	\$10,000	\$14,454	\$84,454	\$253,362
<b>Iosco</b>	\$60,000	\$10,000	\$12,768	\$82,768	\$248,304
<b>Montmorency</b>	\$60,000	\$10,000	\$4,577	\$74,577	\$223,731
<b>Oscoda</b>	\$60,000	\$10,000	\$4,110	\$74,110	\$222,230