



BACK TOGETHER

In Geneva 304



Return-to-Learning Plans for 2020-21



A Dynamic Situation

- Working Through Scenarios Since May 29th
- ISBE and IDPH Guidance on June 23rd
- Ongoing Evolution of the Pandemic
- Evolving State Guidance
- All Districts Developing and Releasing Individual Plans

Shared Understandings



- This will NOT be a 'normal' year.
- Everyone involved wants the very best for our district.
- We are at our best when we have kids learning in person.
- We need to consider social distancing and safety enhancements for any in-person learning.
- We must be prepared to implement multiple scenarios during the year.
- The situation will continue to evolve and we must be prepared to adapt.
- *#GenevaGivesGrace*

Priorities



- Minimize health risks for students and staff
- Maximize the time for in-person instruction
- Support the social/emotional needs of students (as well as families & staff)
- Address the unique learning needs of special populations
- Provide families with choice in how to address the educational needs and services of their child

Scenarios

- A: In-Person with Limited Remote Supports
- B: In-Person and Remote Hybrid (A/B Schedule)
- C: Full Remote

We are preparing for a return to In-Person Learning while also preparing for Full-Remote Learning (Scenario C) should that be necessary.

Critical Considerations for A/B Schedule



- An A/B Schedule helps the district maintain as much distancing as possible by reducing the number of students in classrooms and buildings.
- An A/B Schedule limits potential exposure and helps mitigate the potential spread of the virus.
- An A/B Schedule makes building and district-based contact tracing strategies more manageable and effective.
- An A/B Schedule helps maintain our capacity for in-person learning.



BACK TOGETHER

In Geneva 304



In-Person Learning



Guidance from the State Board of Education strongly encourages a return to in-person learning for all students in Illinois. This document provides information about our plan for providing a safe and healthy environment for in-person learning.

In-Person Learning



Guidance from the State Board of Education strongly encourages a return to in-person learning for all students in Illinois. This document provides information about our plan for providing a safe and healthy environment for in-person learning.

- Rationale:
 - We're at our best with kids in person
 - Families and staff note the value of in-person learning
 - We must take health and safety precautions seriously
- Critical Understandings
 - An A/B Schedule for Students
 - Enhanced Health and Safety Practices
 - Disequilibrium and Creativity
 - Common Tech Tools from Day 1

Clarification of Learning Models



- **A/B Schedule (Hybrid)**
 - **In-Person Learning Days:** Students will attend school in person on their scheduled A/B day. Buildings and classrooms will accommodate roughly ½ of our students in an effort to maximize capacity for social distancing.
 - **Off-site Learning Days:** Students will work from home on off-site learning activities on their scheduled A/B off-site learning day. Teachers will provide off-site students with both synchronous (live) and asynchronous (own pace) learning activities.
- **Online-Only Learning (In-Person Opt Out)**
 - The district has developed a limited online-only learning option designed for families with significant reservations about their children returning to any in-person learning this fall. Course offerings at all levels will be limited to core-content areas and families must commit through at least December 2020. This is a parallel learning option and not a component of the in-person and off-site learning days.
- **Remote Learning (Full Remote Learning District Wide)**
 - The district will continually reflect upon the most up-to-date guidance and adapt as the situation evolves. Should the need arise to transition from our Hybrid A/B In-Person Schedule to a Full-Remote model, Full-Remote Learning would occur for all students daily on regular school days.



BACK TOGETHER

In Geneva 304



In-Person Learning



Sample A/B Schedule

- K-12 students will return for in-person instruction through an A/B day schedule.
- Students in Group A with last names starting with A-K will attend face-to-face instruction on Mondays and Wednesdays with alternating Fridays.
- Students in Group B with last names starting with L-Z will attend face-to-face instruction on Tuesdays and Thursdays with alternating Fridays.
- A-Day/B-Day assignments may be adjusted by the building principal in an effort to balance in-person numbers and maximize capacity for social distancing on A/B days.

Sample Weeks 1 & 2 - Based on a typical 2-week period with no scheduled Institute or half-days

Monday	Tuesday	Wednesday	Thursday	Friday
<u>A</u>	<u>B</u>	<u>A</u>	<u>B</u>	<u>A</u>
Monday	Tuesday	Wednesday	Thursday	Friday
<u>A</u>	<u>B</u>	<u>A</u>	<u>B</u>	<u>B</u>

- In-Person students will attend school in smaller groups and follow health and safety protocols
- Off-site students will participate in synchronous and asynchronous learning activities
- A calendar has been developed to maximize consistent experiences for both A and B groups.

In-Person Learning Days



- Class sizes will be (roughly) cut in half
- Maximize social distancing throughout our buildings
- Minimize movement and reduce capacity throughout the building when possible
- Utilize technology tools when appropriate
- Focus on most valuable in-person activities

Off-site Learning Days



- Daily lessons and activities for students
- Opportunities for live interaction and independent work
- Attendance taken daily
- Grades as appropriate for assigned work



Social Distancing & Face Coverings

- The A/B schedule is designed to reduce health and safety risks by providing our schools with greater capacity for social distancing in our classrooms, hallways, libraries, gyms, cafeterias, and other indoor locations.
- Classrooms will be organized to maximize distance between students.
- Strategies will be put in place to manage movement within the building.
- Face coverings must be worn at all times when an individual is inside of a school building (with limited exceptions for lunch, and band instruction).

Cleaning and Disinfecting



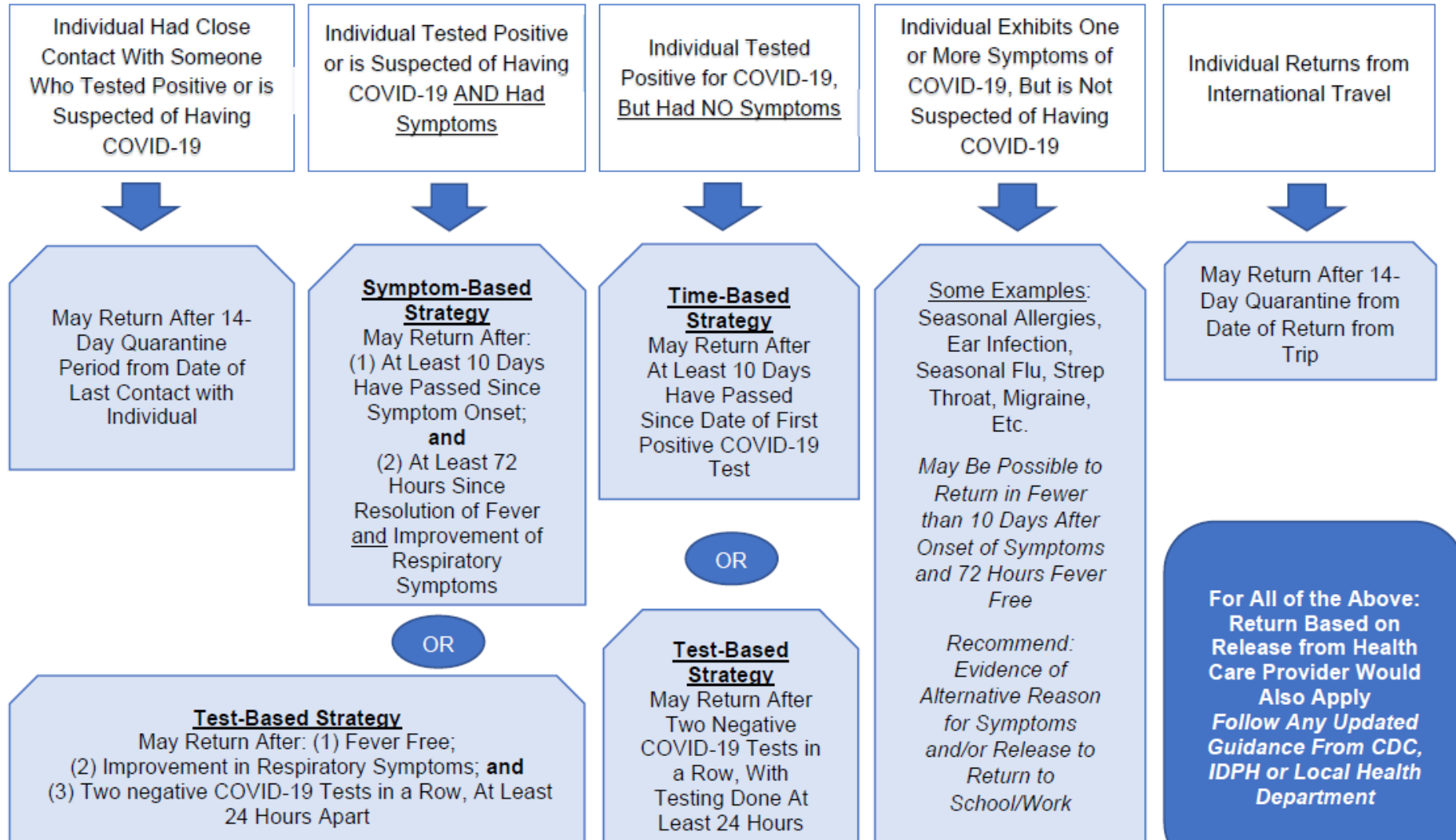
- Cleaning and disinfecting processes have been reviewed and will correspond to ISBE and CDC guidelines.
- Disinfectants used are EPA approved to combat COVID-19.
- The District has invested in electrostatic technology that allows disinfectants to be rapidly applied to surfaces throughout the school at a rate of 1,000 square feet per minute.
- Special focus and protocols will be put into place to support the disinfection of high touch areas. High touch surfaces are defined by the CDC as a surface that is touched many times throughout the day by many people.
- Hand sanitizer used throughout the District meets the CDC guidelines for alcohol content and is approved by the FDA.

Daily Symptom Screening



- The district will institute a self-certification process for anyone entering a school building.
- The process will require all those entering the building to self-certify that they are, among other things, healthy, symptom-free, and do not have a fever.
- Families will be required to conduct the symptom screening at home, daily, prior to the start of the school day.
- Students who do not meet the criteria should not attend school on their designated A/B day. Students who are well enough to participate in the off-site learning day activities may do so.
- The district will provide additional details regarding the self-certification process as it is finalized.

Return to School Protocols





Special Populations

Special Education Services

Students who receive special education services through a Learning Behavior Specialist will attend school in-person daily (5 days per week). They will receive the services that are listed on their current Individualized Education Plan. Further details regarding their instructional day amid an A/B schedule will be provided at a later date.

Students who qualify for speech-language services only, will follow the A/B schedule. They will receive the speech and language services as listed on their current Individualized Education Plan.

English Learners

English Learners who receive services through an EL teacher will attend school in-person daily (5 days per week). They will receive the services for which they are eligible to support their language acquisition. Further details regarding their instructional day amid an A/B schedule will be provided at a later date.

Lunch and Food Service



Eating Areas

Multiple spaces will be designated as lunch areas within each school. Students will be assigned to a specific eating area and may be assigned a specific table and seat. Social distancing within each eating area will be implemented in accordance with ISBE guidelines. The maximum amount of individuals in one space will not exceed 50.

Lunch Table Cleaning / Disinfection

Tables and desks that are used by students for lunch will be cleaned and disinfected after use.

Free Lunch Program

Students who qualify for the Free Lunch Program will have access to lunches at no charge while in attendance at school, on off-site attendance days, or while participating in Online-Only Learning.

Transportation



Busing Protocol

The district plans to institute a self-certification process for all students who will plan to ride the bus. All students must wear a mask while entering the bus, during transportation, and while exiting the bus. Students will be assigned a specific seat on the bus and students who live within the same household will be required to sit together. Ridership will not exceed 49 students on any route at any time.

Bus Cleaning /Disinfection

All buses will be disinfected after each high school, middle school and elementary bus route receive a deep cleaning weekly.

Extracurriculars



Athletics

- High school athletic programs will run in accordance to IHSA and IDPH/CDC guidelines
- Middle school athletic programs will run in accordance to IHSA and IDPH/CDC guidelines

Clubs & Activities

- School sponsored clubs and activities may run in accordance with ISBE and IDPH guidelines.
- Outside sponsored activities will not be allowed at this time

Considerations

- Decisions about specific clubs, activities, and athletics will be made on a case-by-case basis.
- Clubs and activities may be held in-person, virtually, or in some combination of the two
- A/B students may participate in extracurriculars on their offsite learning days.
- Transportation options are still being evaluated

New Realities



Handwashing

- Elementary-Students will be required to use hand sanitizer or to wash their hands upon entry to a new environment.
- Secondary-Students will be encouraged to sanitize or wash hands frequently
- Soap and hand sanitizer will be available to students

Lockers

- Lockers will not be assigned to all students
- Elementary Cubbies-students will begin with backpacks in the classroom and be assigned to transfer such to their cubby in intervals

Backpacks

- Students will be allowed to carry necessary materials in a backpack as they will not all be assigned lockers.

New Realities



Water Fountains

- Students will be encouraged to bring water bottles from home.
- Bottle fillers in buildings will be on and available.
- A limited number of water fountains will be on in each building and sanitized following appropriate guidance.

PE

- Students will not change clothes for PE
- Students will not have access to locker rooms pre/post class
- PE classes will be held outdoors to the greatest extent necessary

Playground

- Due to cleaning and sanitizing requirements playground equipment may not be used during the school day.



BACK TOGETHER

In Geneva 304



Online-Only Learning



The district has developed a limited online-only learning option designed for families with significant reservations about their children returning to any in-person learning this fall. This document provides information regarding limited curricular offerings as a long-term alternative to participation in in-person learning.

Online-Only Learning



The district has developed a limited online-only learning option designed for families with significant reservations about their children returning to any in-person learning this fall.

- Rationale:
 - Some students will require a fully online option
 - Providing parent choice in a complicated world
 - Structured and limited options allow for capacity
- Critical Understandings
 - Teachers cannot manage in person, offsite, AND online-only learning
 - Options will be limited
 - An extended commitment
 - A separate and parallel track

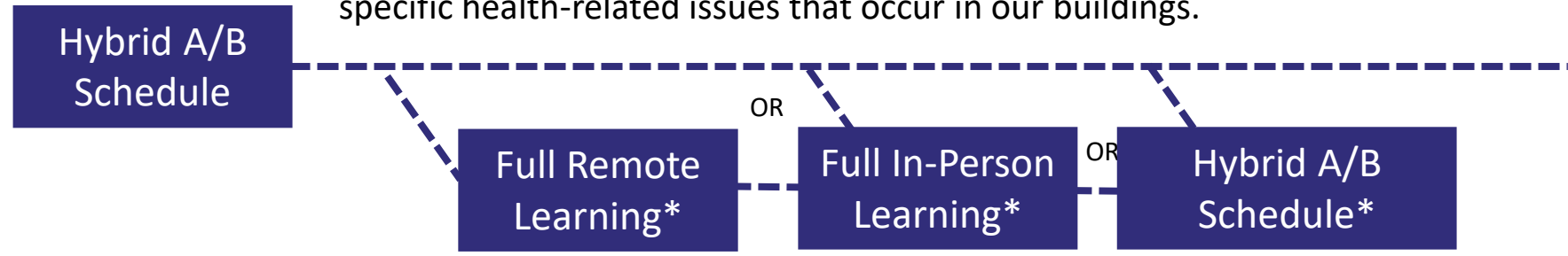
Online-Only Learning



A Parallel Track

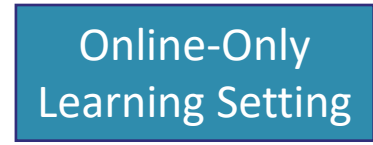
The setting of the In-Person Instruction option could be impacted by various factors, such as our current phase in our state's Restore Illinois plan, or specific health-related issues that occur in our buildings.

In-Person Learning



*Not necessarily a sequential representation, but each scenario is possible depending on circumstances mentioned above. It is also possible that the In-Person Instruction setting would remain unchanged.

Online-Only Learning



Regardless of scenarios that might impact In-Person Learning, students who enroll in this model would remain in their setting and learning model throughout at least December 2020.

Online-Only Learning



Remote Instruction

Students in the online-only learning option would be enrolled in virtual sections of pre-identified classes. These sections would not necessarily be associated with your assigned neighborhood school. Students would have some opportunity for synchronous instruction via Microsoft Teams, and complete all learning and assigned work virtually.



Online-Only Learning



Curricular Offerings

Course offerings for student who enroll in online-only learning will be limited to core content areas, mandated topics, and graduation requirements at all levels. Most elective courses, exploratory options, specials offerings, and other unique in-person experiences would not be provided to students who opt-out of in-person learning. *

Subject/Course	Elementary	Middle	High
Language Arts	Language Arts	Language Arts	English
Math	Math	Math	Math
Social Studies	Social Studies	Social Studies	Social Studies
Science	Science	Science	Science
PE	Common Opportunity for all Remote Learners by Level		

* Final class assignments will be determined after students have enrolled in online-only learning and sections can be developed and finalized.





Special Education Services

- An Individualized Remote Learning Plan (IRLP) will be created for students who enroll in the online-only learning option.
- The IRLP will outline the services and minutes that will be provided during online-online learning.
- The IRLP will target specific IEP goals that will be addressed during this time.
- Students who are online-only learners may be instructed by an unfamiliar service provider.



Commitment

Families who select online-only learning must commit to remaining in their remote instruction through at least December 2020. Due to staffing and capacity issues, in-person options may be limited when and if an in-person return is considered.

Re-evaluation

As the situation evolves, the district will closely monitor the most up-to-date information and develop options for January 2021 and beyond. At that time, the district will reserve the right to limit options for those who have elected to opt out of in-person learning.



- Families will receive an email with additional details regarding the selection process
- Log into Home Access Center (HAC)

ADDITIONAL INFORMATION - Expand section - Respond Accordingly *

Key Considerations for the 2020-21 School Year

Please indicate which learning setting you are choosing for the start of the 2020-21 school year. I understand that if I select the Online-Only Learning option that I am committing to this program through at least December 2020. *

If your student will be In-Person, will they require transportation by the District? This election is important to ensure balanced routing and seat assignment for students who will be using district transportation. Eligibility requirements still apply. *

Enter Any changes Below

-- Select --

-- Select --

Next Steps

- Families review information and consider options
- Ongoing planning and preparation
- Continue to evaluate as the situation evolves
- Follow up communication and updates



Additional Resources

<https://www.geneva304.org/BacktoTogetherInGeneva304.aspx>



BACK TOGETHER

In Geneva 304



Thank you