

Collin College

2017 Capital Improvement Program
Monthly Report
October 2021

Collin County Community College District

Project Reference: 60541060
Project Number: 60541060


November 08, 2021

Quality information

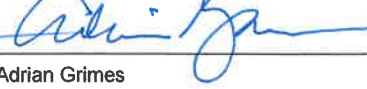
Prepared by


Nuria Cortes
Program Controls Manager

Reviewed by


Jeff Hagerich
Deputy Program Director

Approved By


Adrian Grimes
Program Director

Revision History

Revision	Revision date	Details	Authorized	Name	Position
First Publication	November 08, 2021	October '21 Report	Yes	Adrian Grimes	Program Director

Distribution List

# Hard Copies	PDF Required	Association / Company Name
1		Dr. Neil Matkin / Collin College
1		Chris Eyle / Collin College

Prepared for:

Collin County Community College District
3452 Spur 399
Suite 327
McKinney, TX 75069

Prepared by:

Nuria Cortes
Program Controls Manager
E: ncortes.aecom@collin.edu

AECOM
13355 Noel Road
4th Floor
Dallas TX, 75240
aecom.com

Copyright © 2020 by AECOM

All rights reserved. No part of this copyrighted work may be reproduced, distributed, or transmitted in any form or by any means without the prior written permission of AECOM.

Table of Contents

1.	Introduction	5
2.	Executive Summary	5
3.	Scope	6
3.1	Phase 1	6
3.2	Phase 2	6
3.3	Phase 3	7
4.	Community	7
4.1	Project Teams	7
4.1.1	Phase 1	7
4.1.2	Phase 2	8
4.1.3	Phase 3	9
4.2	Current Personnel Estimate	10
4.3	Community Outreach	10
5.	Schedule	11
5.1	Program	11
5.2	Phase 1	11
5.3	Phase 2	12
5.4	Phase 3	14
6.	Budget	15
6.1	Program Summary	15
6.2	Phase 1	16
6.3	Phase 2	17
6.4	Phase 3	18
6.5	Phase A	19
6.6	Additional Program Budgets	19
7.	Completed Items	20
7.1	General Program	20
7.2	Procurement	20
7.3	Design	20
7.4	Pre-Construction	20
7.5	Construction	20
7.6	Acceptance and Close-Out	20
8.	Pending Items	20
8.1	General Program	20
8.2	Procurement	20
8.3	Design	20
8.4	Pre-Construction	20
8.5	Construction	21
8.6	Acceptance and Close-Out	21
	Appendix A – Construction Progress Photos	22

1. Introduction

On May 6, 2017, voters approved Collin College's \$600 million bond proposal to facilitate a long-range plan to accommodate the projected population growth in Collin County over the next two decades. The program consists of 4 new campuses and 2 new facilities.

On May 16, 2017, in a special session, the Board of Trustees granted the District President authority to enter and negotiate into contract with AECOM Technical Services, Inc. (AECOM) to provide Program Management Services to the Collin College 2017 Capital Improvement Program. On May 25, 2017, Collin College issued a Notice to Proceed to AECOM. As part of these services, AECOM will deliver a monthly report to provide status and progress of key aspects of the Program.

2. Executive Summary

The Program is progressing as planned with no major issues to report at this time.

Completed and Pending Items

- Technical Campus – Working on closing out the project.
- Wylie Campus – Working on closing out the project.
- Celina Campus – Completing last open punchlist items.
- Farmersville Campus – Landscaping and irrigation warranty work is on-going. Construction of the City's Collin Parkway road project is complete.
- IT Center - Punchlist items correction is nearing completion. Functional testing of HVAC and lighting controls is on-going. O&M manuals are being reviewed by the Architect and Commissioning Agent.
- Frisco Campus (Addition and Renovations) – Overhead MEP is complete on Level 1 and on-going on Level 2 at Heritage Hall. Overhead MEP is complete at Founders Hall. Tape, bed, and painting is on-going at Heritage Hall and Founders Hall. At Lawler Hall, piers for the trellis have been installed and foundations for seating are complete. At Alumni Hall, under-slab utilities is complete and slab for the kitchen addition has been poured.
- McKinney Campus (Welcome Center and Renovations Projects) Site Upgrades – Southwest parking area along Community is poured to the new configuration. The new sewer tie-in just South of the main building has been completed and poured back. Southwest new water line extension has been completed and fire line tie-in for the Welcome Center has been tapped. Welcome Center – Area A (North side) – misc. steel is complete, exterior stud walls and sheathing is nearing completion, MEP rough-in is ongoing, priority walls are nearing completion, and interior walls are starting. Area B (South side) – misc. steel is complete, MEP rough-in has commenced, exterior walls has commenced. Roof – roofing has commenced on Area A. Kitchen/Dinning – floor MEP complete, walls are complete, MEP overhead is nearing completion, starting hard ceilings and soffits. Dental offices and hygiene area millwork arrived at end of month, install will start November 3rd. The new offices have ceiling grid and base paint – flooring arrived at end of the month and install will begin the first week of November.

Items of close attention

- Completion of punch list items at Celina Campus and IT Center

Budget Summary

- \$575,444,291 of the \$600,000,000 has been committed to-date in the form of contracts with various vendors. This represents 95.91% of the overall program budget committed.

- \$532,202,974 of the \$575,444,291 committed amount has been expended to-date. This represents 92.49% of the commitments to date and 88.70% of the program budget.

3. Scope

3.1 Phase 1

- Wylie Campus
 - Construction of a campus on a new approximately 97-acre site
 - The campus includes:
 - Campus Commons
 - Library
 - Student Center/Conference Center
 - Central Utility Plant
- Technical Campus
 - Construction of a Technical Campus on a new 32-acre site in Allen, Texas
 - The campus includes:
 - 450 space underground parking garage
 - Academic Building (includes space for dual credit students)
 - 3 Trade Bar Buildings to support CTE programs

3.2 Phase 2

- Celina Campus
 - Construction of a campus on a new approximately 75-acre site
 - The campus includes:
 - Student Union / Workforce / Instructional Building
- Farmersville Campus
 - Construction of a campus on a new approximately 76-acre site
 - The campus includes:
 - Student Union / Workforce / Instructional Building
- Frisco Campus
 - Construction of a new IT Center building on the existing campus

3.3 Phase 3

- Additions and Renovations at Frisco Campus
 - Alumni Hall Renovations and Additions
 - Lawler Hall Renovations
 - Heritage Hall Upgrades
 - Founders Hall Renovations
 - Wayfinding
- Additional Frisco Campus Projects
 - Construction of a new fire lane, parking lot, and loop road on the existing campus
 - Trane Upgrades
- Additions and Renovations at McKinney Campus
 - Construction of a new Welcome Center on the existing campus
 - New Entry Drive and Parking
 - Pistol Range Demo
 - Kitchen and Dining Renovations in Main Building
 - Dental Hygiene Renovations
 - Wayfinding
- Additional McKinney Campus Projects
 - Trane Upgrades
- Additional Plano Campus Projects
 - Trane Upgrades
 - Wayfinding
- Additional Courtyard Center Projects
 - Trane Upgrades
- Additional CHEC Projects
 - Trane Upgrades

4. Community

4.1 Project Teams

4.1.1 Phase 1

- Wylie Campus
 - Program Manager: AECOM Technical Services, Inc.
 - A/E: Page Southerland Page, Inc.
 - MEP: Reed, Wells, Benson & Co.
 - Civil Engineer: Pacheco Koch Consulting Engineers, Inc.

- Cost Consulting: Vermeulens
- Construction Manager-at-Risk: Skanska USA Building, Inc.
- Commissioning Agent: Bath Group, Inc.
- Technical Campus
 - Program Manager: AECOM Technical Services, Inc.
 - A/E: Perkins+Will, Inc.
 - Associate Architect: Hoefer Wysocki Architecture
 - MEP: Purdy McGuire
 - Civil Engineer: Pacheco Koch Consulting Engineers, Inc.
 - Structural Engineer: L.A. Fuess Partners, Inc.
 - Cost Consulting: Vermeulens
 - Construction Manager-at-Risk: McCarthy Building Companies, Inc.
 - Commissioning Agent: Farnsworth

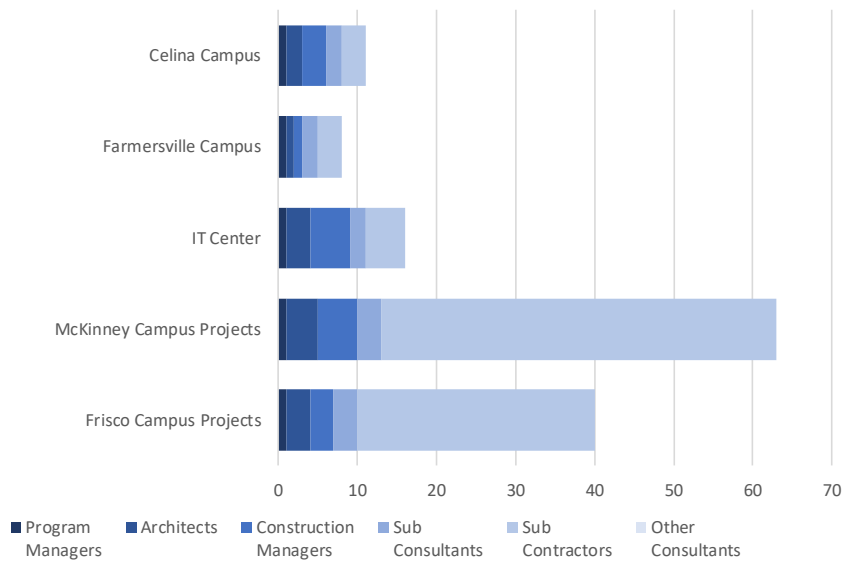
4.1.2 Phase 2

- Celina Campus
 - Program Manager: AECOM
 - A/E: Beck Architecture, LLC
 - Structural Engineer: L.A. Fuess Partners, Inc.
 - MEP: Reed, Wells, Benson & Co.
 - Civil Engineer: RLK Engineering
 - Construction Manager-at-Risk: JT Vaughn Construction
- Farmersville Campus
 - Program Manager: AECOM
 - A/E: Beck Architecture, LLC
 - Structural Engineer: L.A. Fuess Partners, Inc.
 - MEP: Reed, Wells, Benson & Co.
 - Civil Engineer: RLK Engineering
 - Construction Manager-at-Risk: JT Vaughn Construction
- IT Center
 - Program Manager: AECOM
 - A/E: Beck Architecture, LLC
 - Structural Engineer: L.A. Fuess Partners, Inc.
 - MEP: ME Engineers
 - Civil Engineer: RLK Engineering
 - Construction Manager-at-Risk: JE Dunn Construction

4.1.3 Phase 3

- Welcome Center at the McKinney Campus
 - Program Manager: AECOM Technical Service, Inc.
 - A/E: PBK
 - Construction Manager-at-Risk: Skanska USA Building, Inc.
 - Commissioning Agent: Bath Group, Inc.
- Loop Road/Parking at Frisco Campus
 - Program Manager: AECOM Technical Service, Inc.
 - Civil Engineer: RLK Engineering
 - Construction Manager-at-Risk: JE Dunn Construction
- Fire Lane at Frisco Campus
 - Program Manager: AECOM Technical Service, Inc.
 - Civil Engineer: RLK Engineering
 - Construction Manager-at-Risk: Skanska USA Building, Inc.
- Additional Projects at Frisco Campus
 - Program Manager: AECOM Technical Service, Inc.
 - A/E: Page Southerland Page, Inc.
 - Construction Manager-at-Risk: Skanska USA Building, Inc.
- Additional Projects at McKinney Campus
 - Program Manager: AECOM Technical Service, Inc.
 - A/E: PBK
 - Construction Manager-at-Risk: Skanska USA Building, Inc.
- Trane Upgrades at 5 Existing Campuses
 - Program Manager: AECOM Technical Service, Inc
 - Design – Builder: Trane Companies, Inc.
- Additional Projects at Plano Campus (Wayfinding)
 - Program Manager: AECOM Technical Service, Inc
 - A/E: IN2 Architects
 - General Contractor: SCC Signs and Lighting

4.2 Current Personnel Estimate



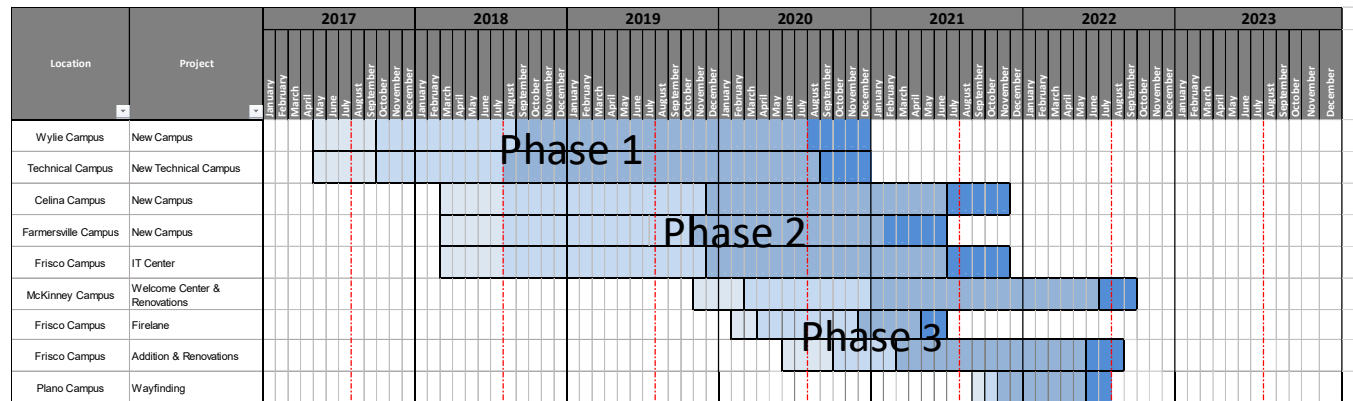
It is estimated that the Program Managers, Architects, Construction Managers, Sub-Consultants, and Sub-Contractors, under contract with Collin College for the 2017 Capital Improvement Program, have 147 employees contributing to the program's progress.

4.3 Community Outreach

- Collin College 2017 Capital Improvement Program Website
 - <https://CollinCollege2017CIP.com>
 - Includes the following features:
 - Program Overview
 - Project Scopes
 - Project Schedules
 - Project Budgets
 - Progress Photos/Renderings
 - Live On-Site Camera Feeds

5. Schedule

5.1 Program



- Planning & Team Selection
- Programing & Design
- Construction

We Are Here

5.2 Phase 1

Wylie Campus

Activity	Baseline Finish	Planned Finish		Actual Finish	
BOT Approval of Program Manager	May 16, 2017	May 16, 2017	👍	May 16, 2017	✅
BOT Approval of A/E Procurement Method	May 23, 2017	May 23, 2017	👍	May 23, 2017	✅
BOT Approval of Construction Delivery Method	May 23, 2017	May 23, 2017	👍	May 23, 2017	✅
BOT Approval of Recommended Firms	August 22, 2017	August 22, 2017	👍	August 22, 2017	✅
Architect Mobilized	September 12, 2017	September 29, 2017	👎	September 28, 2017	✅
GMP Construction Documents Submittal	June 26, 2018	June 26, 2018	👍	June 26, 2018	✅
BOT Approval of GMP	August 28, 2018	August 28, 2018	👍	August 28, 2018	✅
Contractor Mobilized	September 10, 2018	September 12, 2018	👉	September 12, 2018	✅
Foundations Complete	May 18, 2019	April 30, 2019	👍	April 23, 2019	✅
Structures Complete	June 28, 2019	June 28, 2019	👍	May 23, 2019	✅
Dry-In of Buildings Complete	October 26, 2019	October 26, 2019	👍	October 29, 2019	✅
Permanent Power Complete	September 17, 2019	September 17, 2019	👍	September 21, 2019	✅
Interior Finish-Out Complete	May 1, 2020	June 10, 2020	👎	July 1, 2020	✅
Substantial Completion	June 25, 2020	June 25, 2020	👍	June 30, 2020	✅
Final Completion	August 23, 2020	November 2021	👎	-	
Student Occupancy	August 2020	August 2020	👍	August 1, 2020	✅

Technical Campus

Activity	Baseline Finish	Planned Finish		Actual Finish	
BOT Approval of Program Manager	May 16, 2017	May 16, 2017	👍	May 16, 2017	✔️
BOT Approval of A/E Procurement Method	May 23, 2017	May 23, 2017	👍	May 23, 2017	✔️
BOT Approval of Construction Delivery Method	May 23, 2017	May 23, 2017	👍	May 23, 2017	✔️
BOT Approval of Recommended Firms	August 22, 2017	August 22, 2017	👍	August 22, 2017	✔️
Architect Mobilized	September 12, 2017	September 29, 2017	👎	September 28, 2017	✔️
GMP Construction Documents Submittal	April 16, 2018	April 16, 2018	👍	April 19, 2018	✔️
BOT Approval of GMP	June 26, 2018	June 26, 2018	👍	June 26, 2018	✔️
Contractor Mobilized	July 6, 2018	July 20, 2018	👎	July 26, 2018	✔️
Foundations Complete	September 23, 2019	September 23, 2019	👍	July 29, 2019	✔️
Structures Complete	November 18, 2019	November 18, 2019	👍	November 13, 2019	✔️
Roofing of Buildings Complete	December 20, 2019	December 20, 2019	👍	December 20, 2019	✔️
Permanent Power Complete	December 15, 2019	January 10, 2020	👎	January 15, 2020	✔️
Building A Punchlist Generated	June 5, 2020	June 12, 2020	👎	June 12, 2020	✔️
Building B Punchlist Generated	June 12, 2020	June 19, 2020	👎	June 19, 2020	✔️
Building C Punchlist Generated	June 30, 2020	July 6, 2020	👎	July 9, 2020	✔️
Building D Punchlist Generated	July 6, 2020	July 20, 2020	👎	July 15, 2020	✔️
Substantial Completion	July 6, 2020	August 10, 2020	👎	August 10, 2020	✔️
Final Completion	September 4, 2020	November 2021	👎	-	
Student Occupancy	August 2020	August 2020	👍	August 8, 2020	✔️

5.3 Phase 2

Celina Campus

Activity	Baseline Finish	Planned Finish		Actual Finish	
BOT Approval of Program Manager	September 25, 2018	February 14, 2018	👍	February 14, 2018	✔️
BOT Approval of A/E Procurement Method	September 25, 2018	March 27, 2018	👍	March 27, 2018	✔️
BOT Approval of Construction Delivery Method	September 25, 2018	March 27, 2018	👍	March 27, 2018	✔️
BOT Approval of Recommended A/E Firm	June 26, 2018	June 26, 2018	👍	June 26, 2018	✔️
BOT Approval of Recommended CM Firm	August 2018	August 2018	👍	August 28, 2018	✔️
Architect Mobilized	July 24, 2018	July 24, 2018	👍	July 31, 2018	✔️
Schematic Design Submittal	January 8, 2019	January 15, 2019	👎	January 16, 2019	✔️
Design Development Submittal	April 30, 2019	April 30, 2019	👍	April 26, 2019	✔️
Construction Document Submittal	September 20, 2019	September 20, 2019	👍	September 3, 2019	✔️
Contractor Mobilized	December 2019	December 2019	👍	November 25, 2019	✔️
Foundations Complete	April 9, 2020	April 14, 2020	👎	April 21, 2020	✔️
Structures Complete	July 7, 2020	July 7, 2020	👍	June 9, 2020	✔️
Roofing of Buildings Complete	December 2, 2020	December 2, 2020	👍	November 13, 2020	✔️
Permanent Power Complete	October 7, 2020	October 7, 2020	👍	May 28, 2020	✔️
Interior Finish-Out Complete	May 18, 2021	May 18, 2021	👍	May 28, 2021	✔️
Substantial Completion	July 15, 2021	June 30, 2021	👍	June 30, 2021	✔️
Final Completion	August 12, 2021	January 2022	👎	-	
Student Occupancy	August 2021	August 2021	👍	August 23, 2021	✔️

Farmersville Campus

Activity	Baseline Finish	Planned Finish		Actual Finish	
BOT Approval of Program Manager	September 25, 2018	February 14, 2018	↑	February 14, 2018	✓
BOT Approval of A/E Procurement Method	September 25, 2018	March 27, 2018	↑	March 27, 2018	✓
BOT Approval of Construction Delivery Method	September 25, 2018	March 27, 2018	↑	March 27, 2018	✓
BOT Approval of Recommended A/E Firm	June 26, 2018	June 26, 2018	↑	June 26, 2018	✓
BOT Approval of Recommended CM Firm	August 2018	August 2018	↑	August 28, 2018	✓
Architect Mobilized	July 24, 2018	July 24, 2018	↑	July 31, 2018	✓
Schematic Design Submittal	December 20, 2018	December 18, 2018	↑	December 18, 2018	✓
Design Development Submittal	April 2, 2019	April 19, 2019	↓	April 26, 2019	✓
Construction Document Submittal	July 25, 2019	August 9, 2019	↓	August 9, 2019	✓
Contractor Mobilized	November 2019	November 2019	↑	October 21, 2019	✓
Foundations Complete	March 5, 2020	March 13, 2020	👉	April 2, 2020	✓
Structures Complete	April 13, 2020	April 13, 2020	↑	April 30, 2020	✓
Roofing of Buildings Complete	June 29, 2020	June 29, 2020	↑	June 30, 2020	✓
Permanent Power Complete	June 30, 2020	July 7, 2020	👉	May 4, 2020	✓
Interior Finish-Out Complete	November 30, 2020	November 30, 2020	↑	December 11, 2020	✓
Substantial Completion	January 5, 2021	January 5, 2021	↑	December 21, 2020	✓
Final Completion	February 2, 2021	January 2022	↓	-	
Student Occupancy	August 2021	March 2021	↑	March 12, 2021	✓

IT Center

Activity	Baseline Finish	Planned Finish		Actual Finish	
BOT Approval of Program Manager	September 25, 2018	February 14, 2018	↑	February 14, 2018	✓
BOT Approval of A/E Procurement Method	September 25, 2018	March 27, 2018	↑	March 27, 2018	✓
BOT Approval of Construction Delivery Method	September 25, 2018	March 27, 2018	↑	March 27, 2018	✓
BOT Approval of Recommended A/E Firm	June 26, 2018	June 26, 2018	↑	June 26, 2018	✓
BOT Approval of Recommended CM Firm	August 2018	August 2018	↑	August 28, 2018	✓
Architect Mobilized	July 24, 2018	July 24, 2018	↑	July 31, 2018	✓
Schematic Design Submittal	May 24, 2019	May 24, 2019	↑	May 24, 2019	✓
Design Development Submittal	August 23, 2019	August 23, 2019	↑	August 23, 2019	✓
Construction Document Submittal	December 9, 2019	December 9, 2019	↑	December 9, 2019	✓
Contractor Mobilized	December 2019	January 6, 2020	↓	January 20, 2020	✓
Construction Start for Loop Road/Parking	June 1, 2020	July 13, 2020	↓	July 27, 2020	✓
Foundations Complete	June 22, 2020	June 22, 2020	↑	May 2, 2020	✓
Structures Complete	August 14, 2020	August 14, 2020	↑	July 14, 2020	✓
Phase 1 Construction Complete for Loop Road/Parking	August 15, 2020	August 15, 2020	↑	August 22, 2020	✓
Phase 2 Construction Complete for Loop Road/Parking	October 31, 2020	March 15, 2021	↓	March 15, 2021	✓
Roofing of Buildings Complete	November 3, 2020	November 23, 2020	↓	October 23, 2020	✓
Permanent Power Complete	January 4, 2021	January 4, 2021	↑	January 29, 2021	✓
Interior Finish-Out Complete	May 13, 2021	June 30, 2021	↓	June 30, 2021	✓
Substantial Completion	June 30, 2021	July 7, 2021	👉	July 8, 2021	✓
Final Completion	August 26, 2021	January 2022	↓	-	
Student Occupancy	August 2021	August 2021	↑	August 23, 2021	✓

* Phase 3 (Loop Road and Parking Lot) at Frisco Campus is included in this schedule

5.4 Phase 3

McKinney Campus (Welcome Center and Renovations)

Activity	Baseline Finish	Planned Finish		Actual Finish	
BOT Approval of Program Manager	August 27, 2019	August 27, 2019		August 27, 2019	
BOT Approval of A/E Procurement Method	October 22, 2019	October 22, 2019		October 22, 2019	
BOT Approval of Construction Delivery Method	February 2020	February 2020		October 22, 2019	
BOT Approval of Recommended A/E Firm	March 24, 2020	March 24, 2020		April 28, 2020	
BOT Approval of Recommended CM Firm	March 24, 2020	March 24, 2020		April 28, 2020	
Architect NTP	April 14, 2020	April 14, 2020		April 8, 2020	
Schematic Design Submittal	August 1, 2020	August 1, 2020		August 1, 2020	
Site Construction Document Submittal	October 2, 2020	October 2, 2020		October 2, 2020	
Welcome Center Construction Document Submittal	November 20, 2020	November 20, 2020		October 30, 2020	
GMP #1 * Board Approval	December 8, 2020	December 8, 2020		December 8, 2021	
GMP #2 ** Board Approval	January 26, 2021	February 23, 2021		January 26, 2021	
GMP #1 * Construction Start	January 18, 2021	January 18, 2021		January 28, 2021	
GMP #2 ** Construction Start	March 1, 2021	March 1, 2021		March 15, 2021	
Site - Phase 1	September 3, 2021	September 3, 2021		August 30, 2021	
Site - Phase 2	January 7, 2022	January 7, 2022		-	
Welcome Center Substantial Completion	June 29, 2022	June 29, 2022		-	
Welcome Center Final Completion	July 31, 2022	July 31, 2022		-	
Kitchen Renovation Substantial Completion	December 27, 2021	December 27, 2021		-	
Dental Offices Substantial Completion	October 25, 2021	November 16, 2021		-	
Dental Lab Substantial Completion	October 5, 2021	November 23, 2021		-	
Substantial Completion	May 2022	June 2022		-	
Student Occupancy	July 2022	June 29, 2022		-	

* GMP #1 Site, Civil, and Demolition for Renovation Work

** GMP #2 Construction of New Welcome Center and Renovation

Frisco Campus (Addition and Renovations)

Activity	Baseline Finish	Planned Finish		Actual Finish	
BOT Approval of Program Manager	August 27, 2019	August 27, 2019	↑	August 27, 2019	✓
BOT Approval of Recommended AE Firm	June 23, 2020	June 23, 2020	↑	June 23, 2020	✓
BOT Approval of Recommended CM Firm	August 25, 2020	August 25, 2020	↑	August 25, 2020	✓
Schematic Design Submittal	December 14, 2020	December 14, 2020	↑	December 14, 2020	✓
Construction Document Submittal	March 26, 2021	March 26, 2021	↑	March 26, 2021	✓
GMP #1 * Board Approval	October 27, 2020	October 27, 2020	↑	October 27, 2020	✓
GMP #1 * Construction Start	December 15, 2020	December 15, 2020	↑	December 2, 2020	✓
GMP #2 ** Board Approval	March 2021	April 2021	↓	April 25, 2021	✓
GMP #2 ** Construction Start	April 2021	June 2021	↓	June 7, 2021	✓
Fire Lane Completion	March 2021	October 2021	↓	October 15, 2021	✓
Alumni Hall Start	July 2021	July 2021	↑	July 21, 2021	✓
Alumni Hall Foundations Complete	September 2021	September 2021	↑	September 2021	✓
Alumni Hall Structure Complete	October 2021	November 2021	↓	-	
Alumni Hall Roof Complete	November 2021	December 2021	↓	-	
Alumni Hall Interior Finish-out	April 2022	April 2022	↑	-	
Alumni Hall Substantial Completion	April 2022	April 2022	↑	-	
Alumni Hall Final Completion	June 2022	June 2022	↑	-	
Heritage Hall Renovations Start	June 21, 2021	June 21, 2021	↑	June 21, 2021	✓
Heritage Hall Substantial Completion	January 2022	January 2022	↑	-	
Founders Hall Renovations Start	July 2021	July 15, 2021	👉	July 15, 2021	✓
Founders Hall Substantial Completion	January 2022	January 2022	↑	-	
Lawler Hall Building Entrance Start	July 2021	July 15, 2021	👉	July 26, 2021	✓
Lawler Hall Building Entrance Substantial Completion	December 2021	December 29, 2021	↓	-	

* GMP #1 Fire Lane

** GMP #2 Alumni Hall Remaining Work, Renovations and Foundation Work

6. Budget

6.1 Program Summary

Program Wide Budget Summary

Budget Group	Original Budget	Current Budget	Commitments	Expenditures	% of Budget Committed	% of Commitment Expended
Management, Design, & Pre-Construction	\$50,110,038	\$45,020,941	\$44,793,970	\$43,302,282	99%	97%
Investigation, Testing & Verification	\$8,532,425	\$6,569,472	\$5,348,421	\$4,730,038	81%	88%
Construction, Equipment & Furnishings	\$503,285,069	\$529,121,340	\$524,813,745	\$483,704,664	99%	92%
Misc.	\$465,231	\$354,847	\$186,620	\$185,345	53%	99%
Contingency	\$62,716,268	\$16,489,359	\$0	\$0	0%	0%
Total Program Budget	\$600,000,000	\$600,000,000	\$575,444,291	\$532,202,974		
% of Total Program Budget Committed		95.91%				
% of Total Commitments Expended			92.49%			
% of Total Program Budget Expended				88.70%		

6.2 Phase 1

Wylie Campus

Budget Group	Original Budget	Current Budget	Commitments	Expenditures	% of Budget Committed	% of Commitment Expended
Management, Design, & Pre-Construction	\$15,051,440	\$13,442,958	\$13,442,958	\$13,434,860	100%	100%
Investigation, Testing & Verification	\$2,679,247	\$1,587,529	\$1,587,529	\$1,587,529	100%	100%
Construction, Equipment & Furnishings	\$133,174,284	\$150,180,721	\$150,180,721	\$149,358,500	100%	99%
Misc.	\$126,082	\$61,361	\$61,361	\$61,361	100%	100%
Contingency	\$6,571,649	\$0	\$0	\$0	0%	0%
Total Project Budget	\$157,602,702	\$165,272,570	\$165,272,570	\$164,442,250		
% of Total Project Budget Committed	100.00%					
% of Total Commitments Expended	99.50%					
% of Total Project Budget Expended	99.50%					

Technical Campus

Budget Group	Original Budget	Current Budget	Commitments	Expenditures	% of Budget Committed	% of Commitment Expended
Management, Design, & Pre-Construction	\$14,713,206	\$13,730,979	\$13,730,979	\$13,729,376	100%	100%
Investigation, Testing & Verification	\$2,619,039	\$1,297,502	\$1,297,502	\$1,297,502	100%	100%
* Construction, Equipment & Furnishings	\$130,181,602	\$161,525,655	\$161,525,655	\$161,426,940	100%	100%
Misc.	\$123,249	\$38,501	\$38,501	\$38,501	100%	100%
Contingency	\$6,423,972	\$0	\$0	\$0	0%	0%
Total Project Budget	\$154,061,068	\$176,592,637	\$176,592,637	\$176,492,319		
Allen ISD Reimbursement	-	(\$12,000,000)	(\$12,000,000)	-		
Allen EDC Grant	-	(\$400,000)	(\$400,000)	-		
% of Total Project Budget Committed	100.00%					
% of Total Commitments Expended	99.94%					
% of Total Project Budget Expended	99.94%					

* Actual Budget from bond funds is \$149,125,655 (\$161,525,655 less \$12,000,000 Allen ISD Reimbursement and \$400,000 Allen EDC Grant)

6.3 Phase 2

Celina Campus

Budget Group	Original Budget	Current Budget	Commitments	Expenditures	% of Budget Committed	% of Commitment Expended
Management, Design, & Pre-Construction	\$5,078,807	\$4,011,464	\$3,974,088	\$3,914,391	99%	98%
Investigation, Testing & Verification	\$936,908	\$936,908	\$582,464	\$518,909	62%	89%
Construction, Equipment & Furnishings	\$46,569,862	\$49,274,163	\$47,796,901	\$43,849,733	97%	92%
Misc.	\$44,090	\$64,229	\$22,321	\$22,321	35%	100%
Contingency	\$2,482,596	\$825,499	\$0	\$0	0%	0%
Total Project Budget	\$55,112,263	\$55,112,263	\$52,375,775	\$48,305,355		
% of Total Project Budget Committed	95.03%					
% of Total Commitments Expended	92.23%					
% of Total Project Budget Expended	87.65%					

Farmersville Campus

Budget Group	Original Budget	Current Budget	Commitments	Expenditures	% of Budget Committed	% of Commitment Expended
Management, Design, & Pre-Construction	\$2,539,404	\$2,185,319	\$2,171,319	\$2,142,100	99%	99%
Investigation, Testing & Verification	\$468,453	\$540,867	\$442,485	\$351,453	82%	79%
Construction, Equipment & Furnishings	\$23,284,932	\$25,523,763	\$25,432,568	\$21,690,580	100%	85%
Misc.	\$22,045	\$26,912	\$6,107	\$6,107	23%	100%
Contingency	\$1,241,298	\$229,272	\$0	\$0	0%	0%
Total Project Budget	\$27,556,132	\$28,506,132	\$28,052,479	\$24,190,239		
% of Total Project Budget Committed	98.41%					
% of Total Commitments Expended	86.23%					
% of Total Project Budget Expended	84.86%					

IT Center

Budget Group	Original Budget	Current Budget	Commitments	Expenditures	% of Budget Committed	% of Commitment Expended
Management, Design, & Pre-Construction	\$5,472,853	\$4,884,249	\$4,851,547	\$4,689,214	99%	97%
Investigation, Testing & Verification	\$1,009,600	\$1,193,900	\$858,657	\$820,162	72%	96%
Construction, Equipment & Furnishings	\$50,183,042	\$46,225,015	\$45,407,107	\$39,284,154	98%	87%
Misc.	\$47,510	\$53,157	\$10,487	\$9,212	20%	88%
Contingency	\$2,675,210	\$4,813,073	\$0	\$0	0%	0%
Total Project Budget	\$59,388,215	\$57,169,393	\$51,127,798	\$44,802,742		
% of Total Project Budget Committed	89.43%					
% of Total Commitments Expended	87.63%					
% of Total Project Budget Expended	78.37%					

* Project Budget contains funds for Phase 3 (Loop Road and Parking Lot) at Frisco Campus

6.4 Phase 3

McKinney Campus (Welcome Center and Renovations)

Budget Group	Original Budget	Current Budget	Commitments	Expenditures	% of Budget Committed	% of Commitment Expended
Management, Design, & Pre-Construction	\$4,370,860	\$4,420,820	\$4,393,969	\$3,655,228	99%	83%
Investigation, Testing & Verification	\$472,163	\$553,973	\$353,788	\$106,139	64%	30%
Construction, Equipment & Furnishings	\$30,179,816	\$38,342,104	\$36,902,976	\$11,821,630	96%	32%
Misc.	\$31,435	\$32,476	\$2,845	\$2,845	9%	100%
Contingency	\$2,833,454	\$3,180,222	\$0	\$0	0%	0%
Total Project Budget	\$37,887,728	\$46,529,595	\$41,653,578	\$15,585,842		
% of Total Project Budget Committed	89.52%					
% of Total Commitments Expended	37.42%					
% of Total Project Budget Expended	33.50%					

Frisco Campus (Addition and Renovations)

Budget Group	Original Budget	Current Budget	Commitments	Expenditures	% of Budget Committed	% of Commitment Expended
Management, Design, & Pre-Construction	\$2,883,468	\$1,975,152	\$1,859,109	\$1,385,613	94%	75%
Investigation, Testing & Verification	\$347,015	\$458,793	\$225,997	\$48,344	49%	21%
Construction, Equipment & Furnishings	\$16,724,000	\$16,869,367	\$16,406,622	\$2,975,822	97%	18%
Misc.	\$70,820	\$78,211	\$44,997	\$44,997	58%	100%
Contingency	\$1,094,995	\$3,559,515	\$0	\$0	0%	0%
Total Project Budget	\$21,120,298	\$22,941,038	\$18,536,725	\$4,454,777		
% of Total Project Budget Committed	80.80%					
% of Total Commitments Expended	24.03%					
% of Total Project Budget Expended	19.42%					

Plano Campus (Additional Projects)

Budget Group	Original Budget	Current Budget	Commitments	Expenditures	% of Budget Committed	% of Commitment Expended
Total Project Budget	\$0	\$2,177,541	\$35,035	\$14,145		
% of Total Project Budget Committed	1.61%					
% of Total Commitments Expended	40.37%					
% of Total Project Budget Expended	0.65%					

6.5 Phase A

Public Safety Training Center

Budget Group	Current Budget	Commitments	Expenditures	% of Budget Committed	% of Commitment Expended
PSTC Construction	\$31,068,022	\$31,068,022	\$31,068,022	100%	100%
PSTC Parking Addition	\$675,000	\$655,641	\$391,753	97%	60%
Total Project Budget	\$31,743,022	\$31,723,663	\$31,459,775		

* This project was not managed by AECOM. However, it is included in the report to make a complete report of Bond costs.

Trane Energy PACT

Budget Group	Original Budget	Current Budget	Commitments	Expenditures	% of Budget Committed	% of Commitment Expended
Frisco Campus	\$9,725,336	\$9,725,336	\$9,725,336	\$9,725,336	100%	100%
Plano Campus	\$6,797,834	\$6,797,834	\$6,797,834	\$6,797,834	100%	100%
McKinney Campus	\$4,044,983	\$4,044,983	\$4,044,983	\$4,044,983	100%	100%
Courtyard Center	\$548,720	\$548,720	\$548,720	\$548,720	100%	100%
Collin Higher Education Center	\$720,659	\$720,659	\$720,659	\$720,659	100%	100%
Total Program Budget	\$21,837,531	\$21,837,531	\$21,837,531	\$21,837,531		

% of Total Project Budget Committed **100.00%**

% of Total Commitments Expended **100.00%**

% of Total Project Budget Expended **100.00%**

6.6 Additional Program Budgets

Program Level

Budget Group	Original Budget	Current Budget	Commitments	Expenditures	% of Budget Committed	% of Commitment Expended
Building Fund Reimbursement	\$51,150,000	\$0	\$0	\$0	0%	0%
Program Wide Traffic Study	\$0	\$370,000	\$370,000	\$351,500	100%	95%
Program Contingency	\$39,393,094	\$3,881,778	\$0	\$0	0%	0%
Trane PACT Program Management		\$99,500	\$99,500	\$99,500	100%	100%
Bond Fees		\$9,500	\$9,500	\$9,500	100%	100%
District Wide Air Cleaning		\$140,000	\$140,000	\$140,000	100%	100%
District Wide Commissioning		\$17,500	\$17,500	\$17,500	100%	100%
Total Project Budget	\$90,543,094	\$4,518,278	\$636,500	\$618,000		

* Building Fund Reimbursements for Wylie Campus land, Technical Campus land, and Public Safety Training Center construction costs were completed in August '18. Budgets, Commitments and Expenditures for these costs are reflected in each project.

** Program Contingency Original Budget is the result of the balance from the original Phase 3 & 4 projects less the funding for the Frisco Campus Parking Garage, McKinney Campus Welcome Center & Trane Energy PACT projects.

* Additional Phase 3 projects to be funded from Program Contingency

7. Completed Items

7.1 General Program

- [AECOM issued the Monthly Program Report for September '21 to Collin College on October 7th](#)

7.2 Procurement

- [SSC Signs and Lighting was issued a Notice to Proceed on October 27th for the Plano Campus Wayfinding](#)

7.3 Design

- No Design Items have been completed at this time

7.4 Pre-Construction

- No Pre-Construction Items have been completed at this time

7.5 Construction

- [Collin College, AECOM, Page Southerland Page, Inc., and Skanska USA Building, Inc. conducted Weekly OAC meetings on October 6th, 13th, 20th, and 27th for the Frisco Campus Addition and Renovations](#)
- [Collin College, AECOM, Page Southerland Page, Inc. and Skanska USA Building, Inc. conducted Weekly OAC meetings on October 5th, 12th, 19th, and 26th for the McKinney Campus Addition and Renovations](#)

[See Appendix A for Construction Progress Photos](#)

7.6 Acceptance and Close-Out

- No Acceptance and Close-Out Phase Items have been completed at this time

8. Pending Items

8.1 General Program

- No General Program items are pending at this time

8.2 Procurement

- [No Procurement items are pending at this time](#)

8.3 Design

- No Design items are pending at this time

8.4 Pre-Construction

- No Pre-Construction items are pending at this time

8.5 Construction

- [Punch list items at the Celina Campus and IT Center at Frisco Campus](#)

See Appendix A for Construction Progress Photos

8.6 Acceptance and Close-Out

- [Final close-out activities are nearing completion for the Wylie Campus, Technical Campus, and Farmersville Campus](#)

Appendix A – Construction Progress Photos

Fire Lane, Addition, and Renovations at Frisco Campus



Slab Prep Outside of Alumni Hall



Dining Area at Alumni Hall



Career Center at Founders Hall



IDF Room at Founders Hall



2nd Floor Classroom at Heritage Hall



Prepping for Paving at Lawler Hall

Welcome Center, Parking Lot, and Renovations at McKinney Campus



October '21 Aerial of Welcome Center



Welcome Center 2nd Floor Arch Windows



New Parking at Southwest End



Kitchen Supply Corridor



Kitchen Serving Line Wall



Renovation of Faculty Breakroom