

MTSS at St. Louis Park Schools

Student Services Department



St. Louis Park
Public Schools

- What is MTSS
- How MTSS is implemented
- MTSS components
- Who's on the team
- What have we accomplished
- Why MTSS
- Steps to ensure success

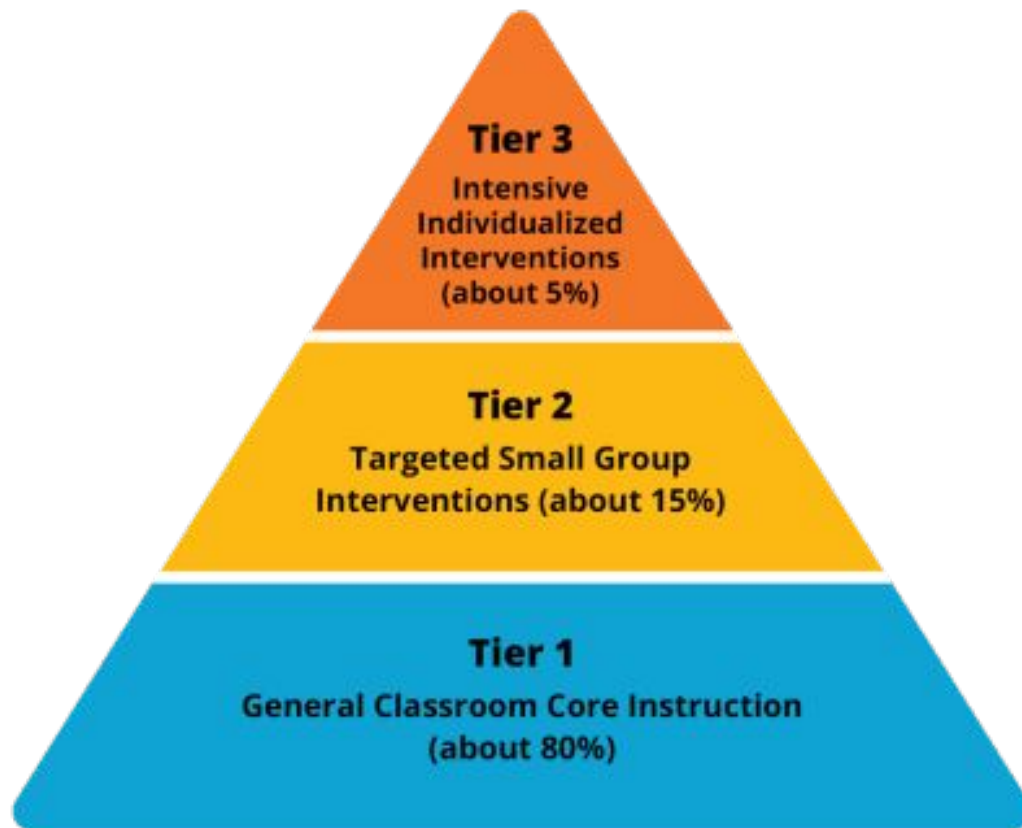


**St. Louis Park
Public Schools**

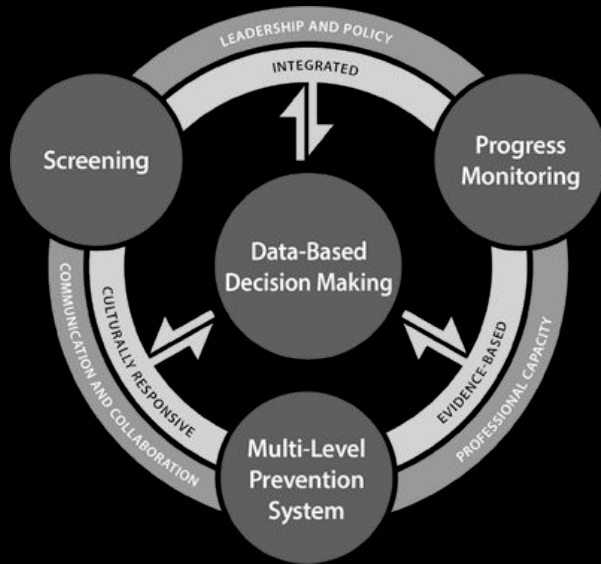
What is MTSS?

Multi-tiered System of Supports (MTSS) is an evidence-based framework that is used by schools to support all students with academics, behavior, social and emotional needs, and mental health needs. In addition, MTSS supports adults by improving teacher effectiveness through professional development, providing resources, and supporting adult wellness (Whalen, 2020).

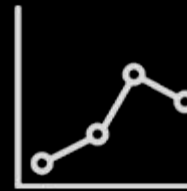
MTSS is a “way of doing business” to ensure that every student and staff member receives the appropriate level of support to be successful.



How is MTSS being implemented?



Screening



Progress



Multi-prevention Data



How is MTSS being implemented?

- Universal screening
- Progress monitoring
- Multi-prevention strategies
- Data-based decision making
- Family & community engagement
- Professional development & coaching
- Equity-centered practices



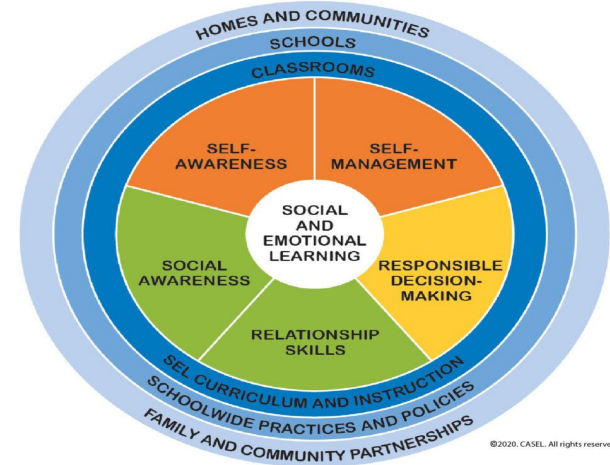
Who's on the team?



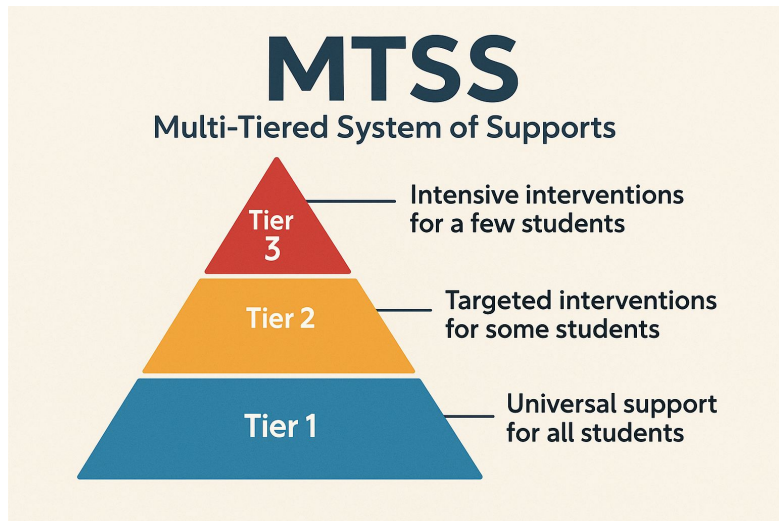
- District and school leadership
- General and special education teachers
- School psychologists, counselors, social workers
- Paraprofessionals and support staff
- Families and community education partners

Milestones and growth

- MTSS teams active in all schools
- Universal screening in place (academics, behavior, SEL)
- Data cycles are driving instruction and interventions
- Reduction in special education referrals
- Decision making as a collective team has increased
- Increase in Tier 1 support and reduction in Tier 3 referrals



Why MTSS matters?



- Provides access and equity for all students
- Prevents students from falling through the cracks
- Builds stronger Tier 1 core instruction
- Supports staff in knowing how to respond to student needs

What's next?

- Continue professional learning for staff
 - Monitor implementation fidelity
 - Strengthen Tier 1 instruction
 - Increase family engagement
-

Questions?