

Annual Report 2024–2025



— CENTER FOR —
**ADVANCED
LEARNING**

CAL Program Areas

Change Lab

Entrepreneurship, Investing, Marketing, Business

Health Sciences

Medicine, Patient Care, Dentistry, Vet Science

Media Lab

Multimedia production, content creation, design

FAB Lab

Fashion, Art, Branding, Sewing & Construction

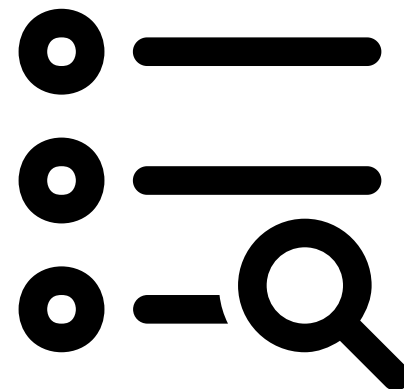
Manufacturing Lab

Welding, Machining, Fabrication, CAD, Engineering

Tech Lab

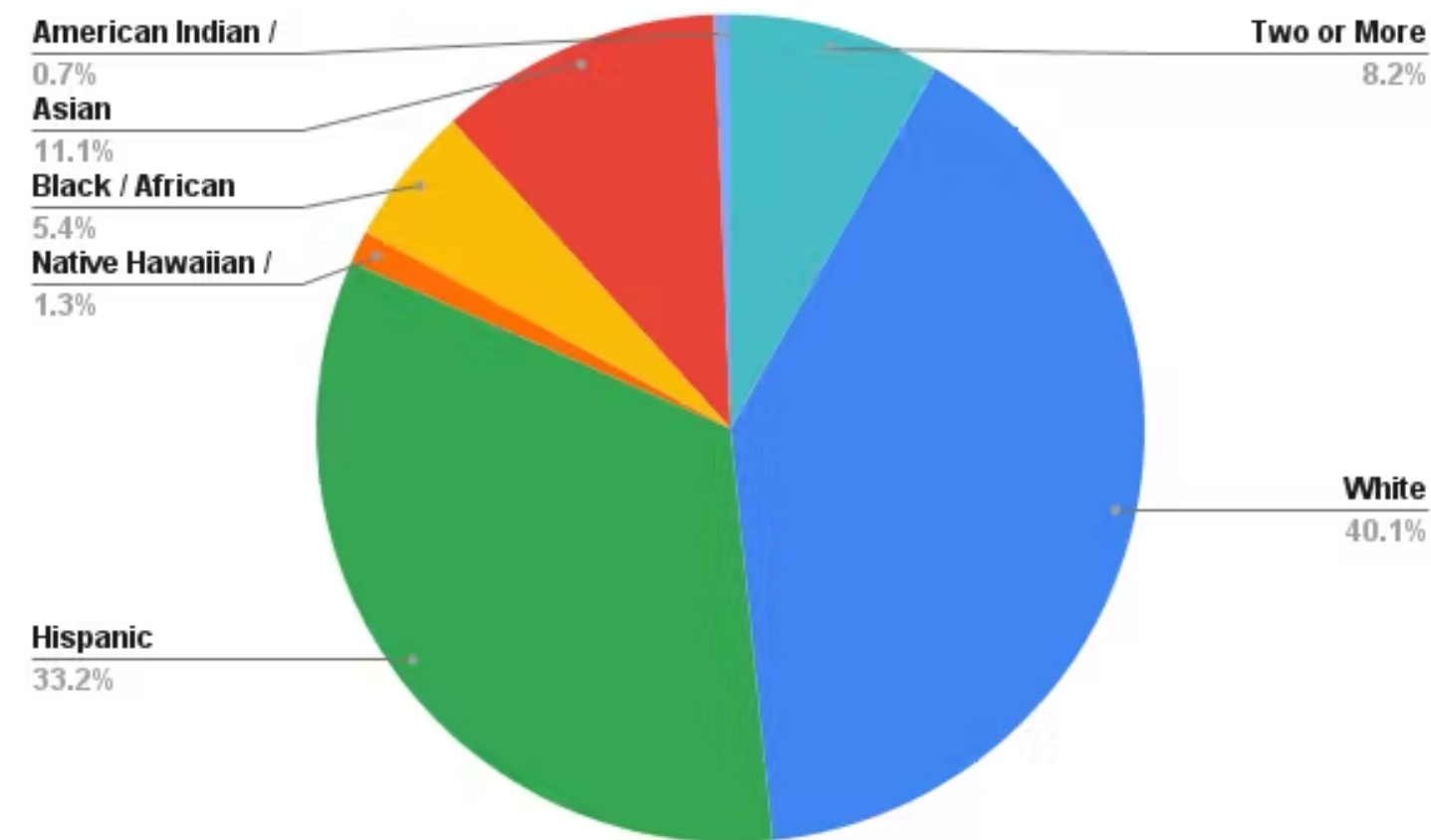
Programming, Web Design, Electronics, Cybersecurity

Annual Data Review

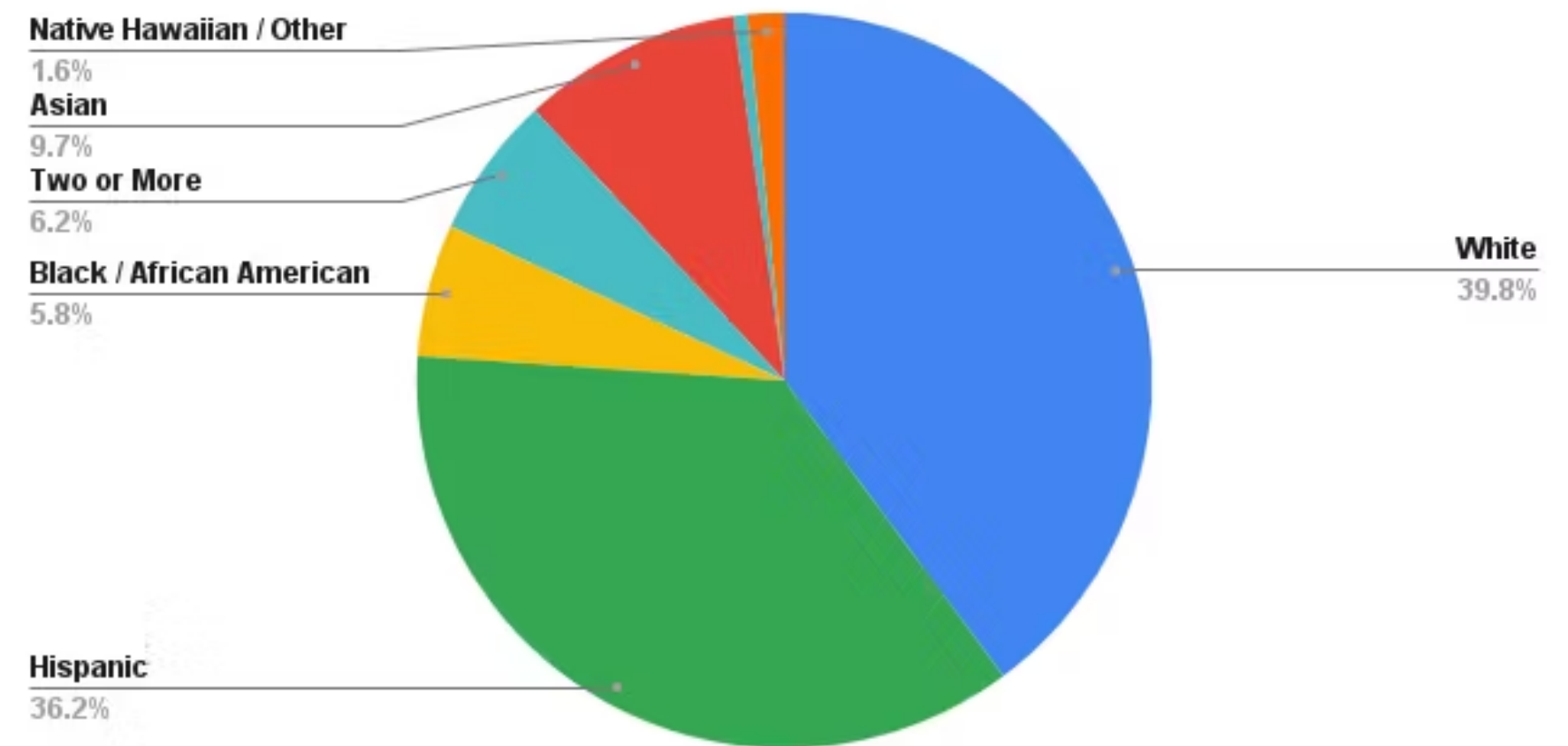


CAL Demographics

23–24 School Year



Current Enrollment

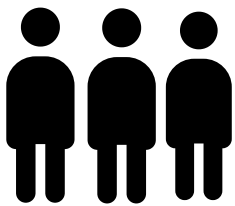


60% BIPOC Student Body

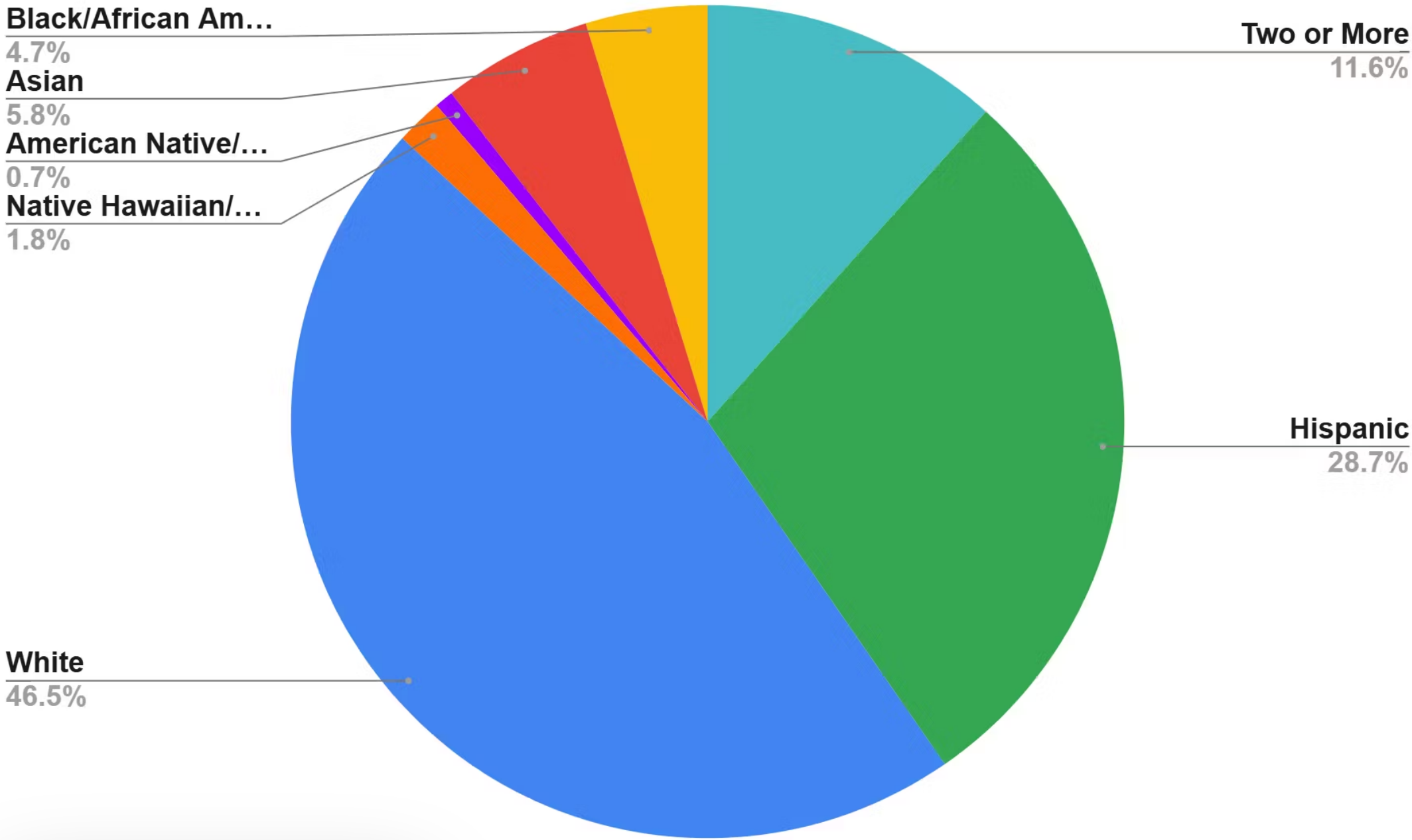
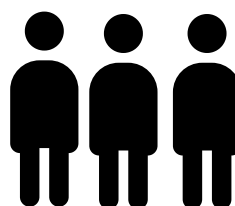
GBSD Enrollment by Program Area

Program	Students Enrolled
Change Lab	31
Tech Lab	25
Media Lab	25
FAB Lab	22
Health Science: Dental	20
Health Science: Medical	123
Manufacturing & Engineering	29

*2024-2025 School Year



GBSD Enrollment Schoolwide

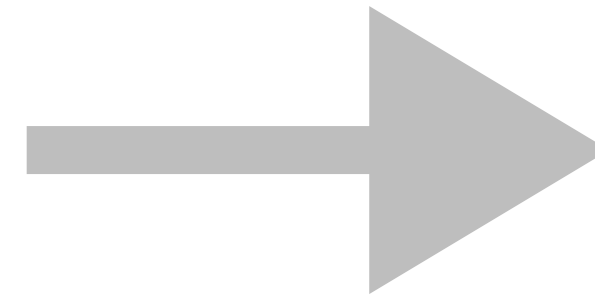


275

*GBSD Students Enrolled at CAL

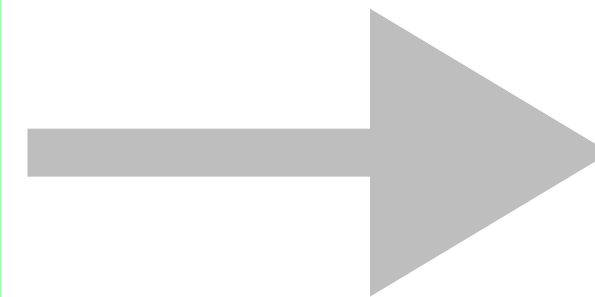
Dual Credit at CAL

Total Credits



2,769

Dollars Saved



\$337,818

+ \$7,422 from last year

Graduation Rate

The positive impacts of CTE and CAL on graduation

80%

Average graduation rate
of CAL partner high schools

93%

Graduation rate for
CTE concentrators in Oregon

99.7%

Graduation rate for CAL
across all districts



College & Career Data

More than 89% of the CAL class of 2025 are college bound!

Most common majors include:

- Business
- Computer Science/Cybersecurity
- Mechanical Engineering
- Healthcare-related (nursing, pre-med, science)
- Media/Design

Most common schools:

- Portland State University
- University of Oregon
- George Fox University
- Mt. Hood Community College
- Portland Community College

Specialty schools and programs:

- Military service (Air Force, National Guard)
- Trade Schools
- Entrepreneurship

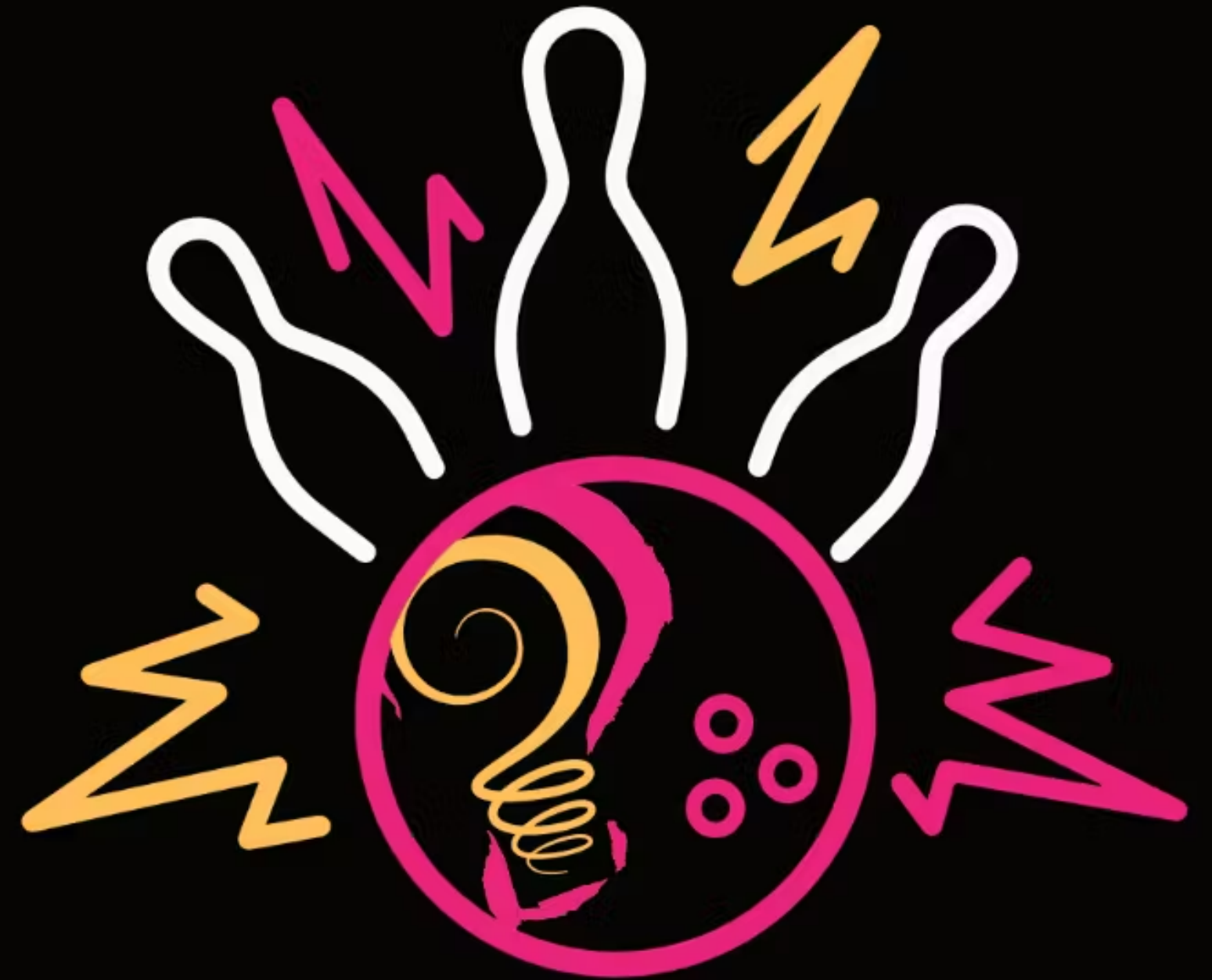
**This is How
We *Roll***



CAL's vision is realized through a **culture of mutual respect and support.**

Critical conversations are most impactful when rooted in emotional **safety and trust.**

Staff model for students how human relationships CAN be; **staff culture shapes school culture.**



**THIS IS HOW
WE ROLL**

THE **BIG** SIX

**LISTEN TO
UNDERSTAND**

**EMPATHIZE
AND
ELEVATE**

**BE OPEN
TO
CHANGE**

**THINK
BIG**

**SPEAK YOUR
TRUTH
RESPONSIBLY**

**BE ALL
IN**

This is **HOW** We *Roll*

Professional Learning Communities

Analysis & Alignment

Learning Communities:

- Grading for Equity
- Assessment
- Instructional Best Practices
- Multi-Tiered Systems of Support

Learning Intensive

Doing the Work

CAL staff engages in learning intensives in the following areas:

- Cultural frames & strengths-based 4:1 approach
- CTE specific professional development
- AI & Evolving Technology

How Do We Roll?

CAL Agreements

Staff and Student Culture & Climate

- The Big Six

Authentic, Real-World Learning

- Employment Knowledgeability Standards
- Work-based Learning



(video here)

Questions?



@calgresham

www.calcharter.org