



**Denton  
Independent  
School  
District**

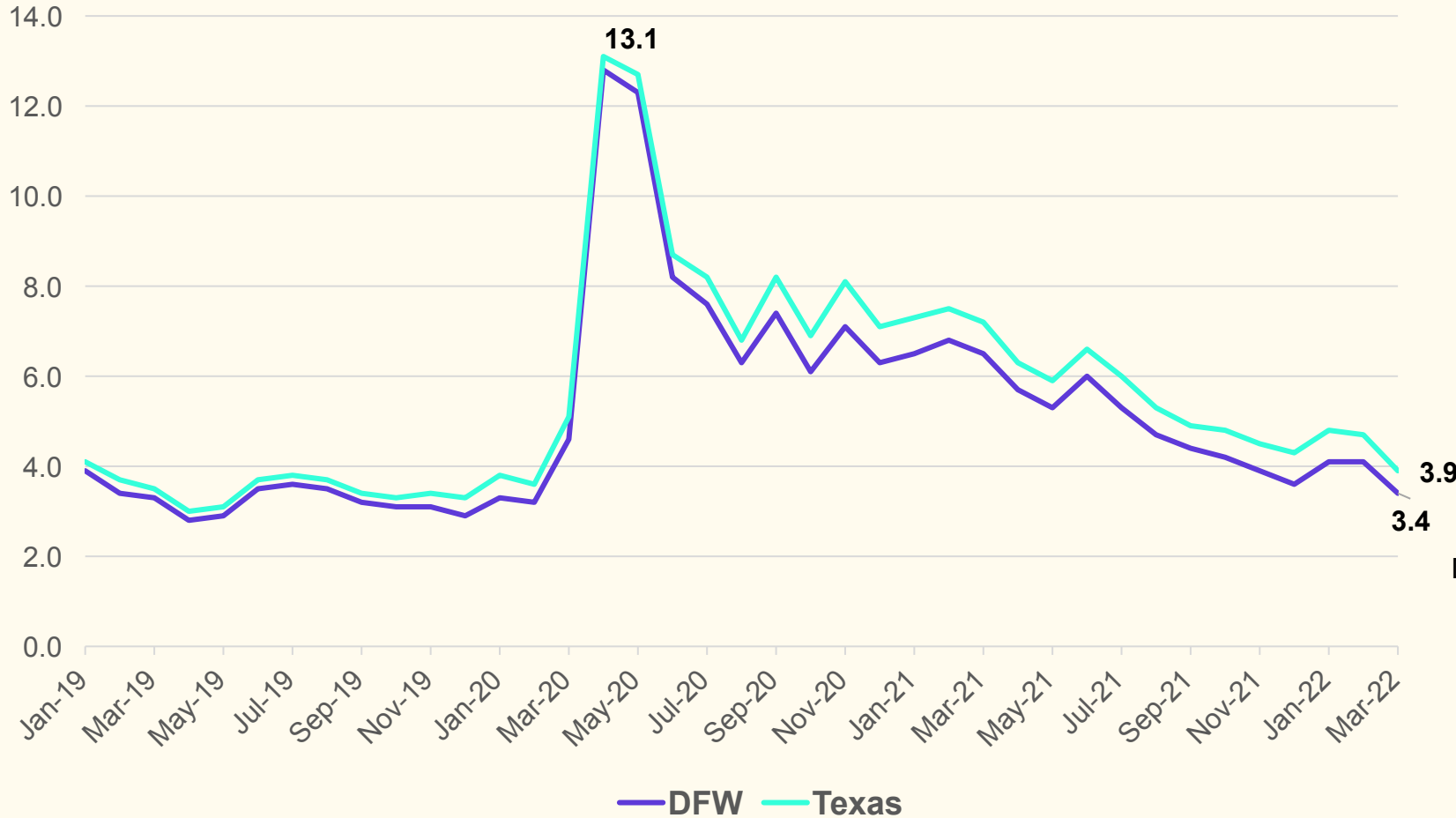
1Q22

**Demographic  
Report**

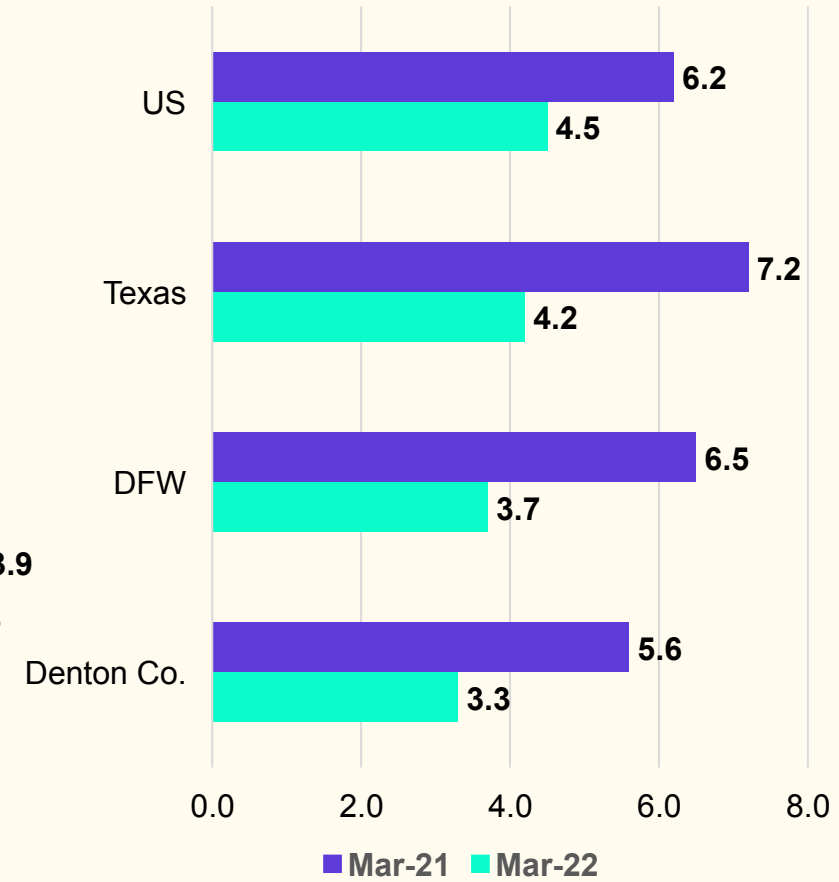


# Local Economic Conditions

## Unemployment Rate, Jan. 2019 - Mar. 2022



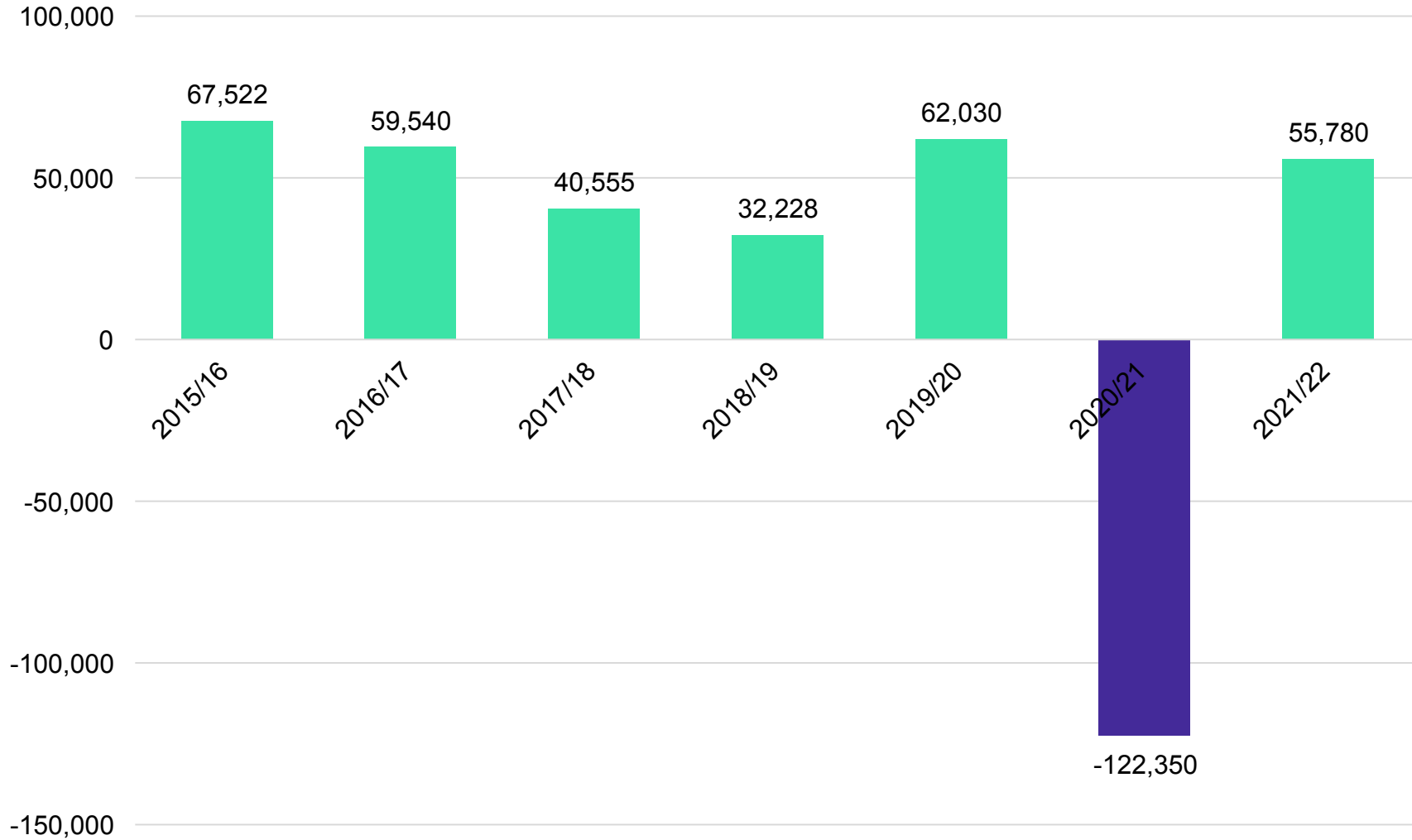
## Unemployment Rate, Year over Year





# State Enrollment Trends

## Texas ISD Enrollment Change





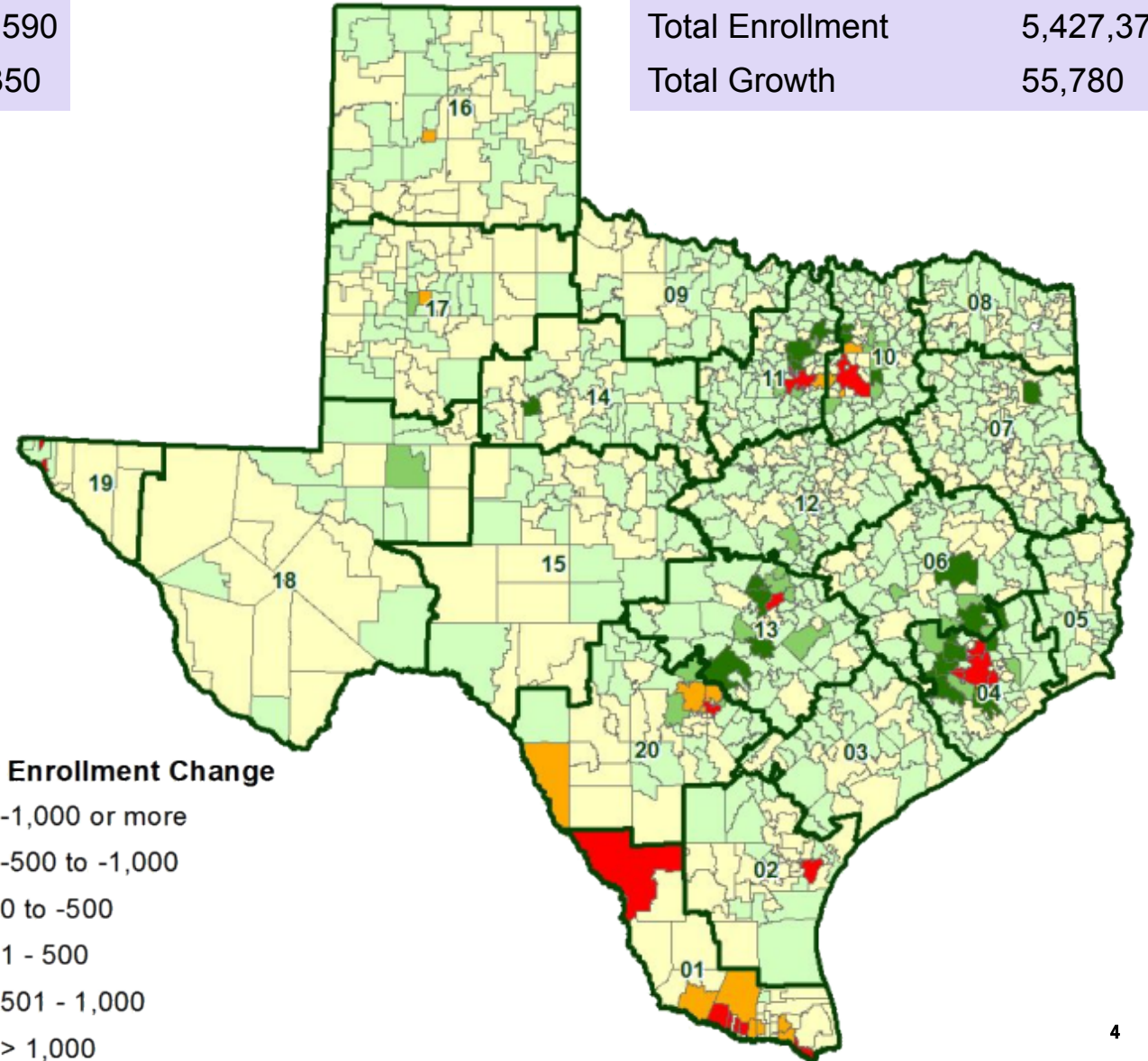
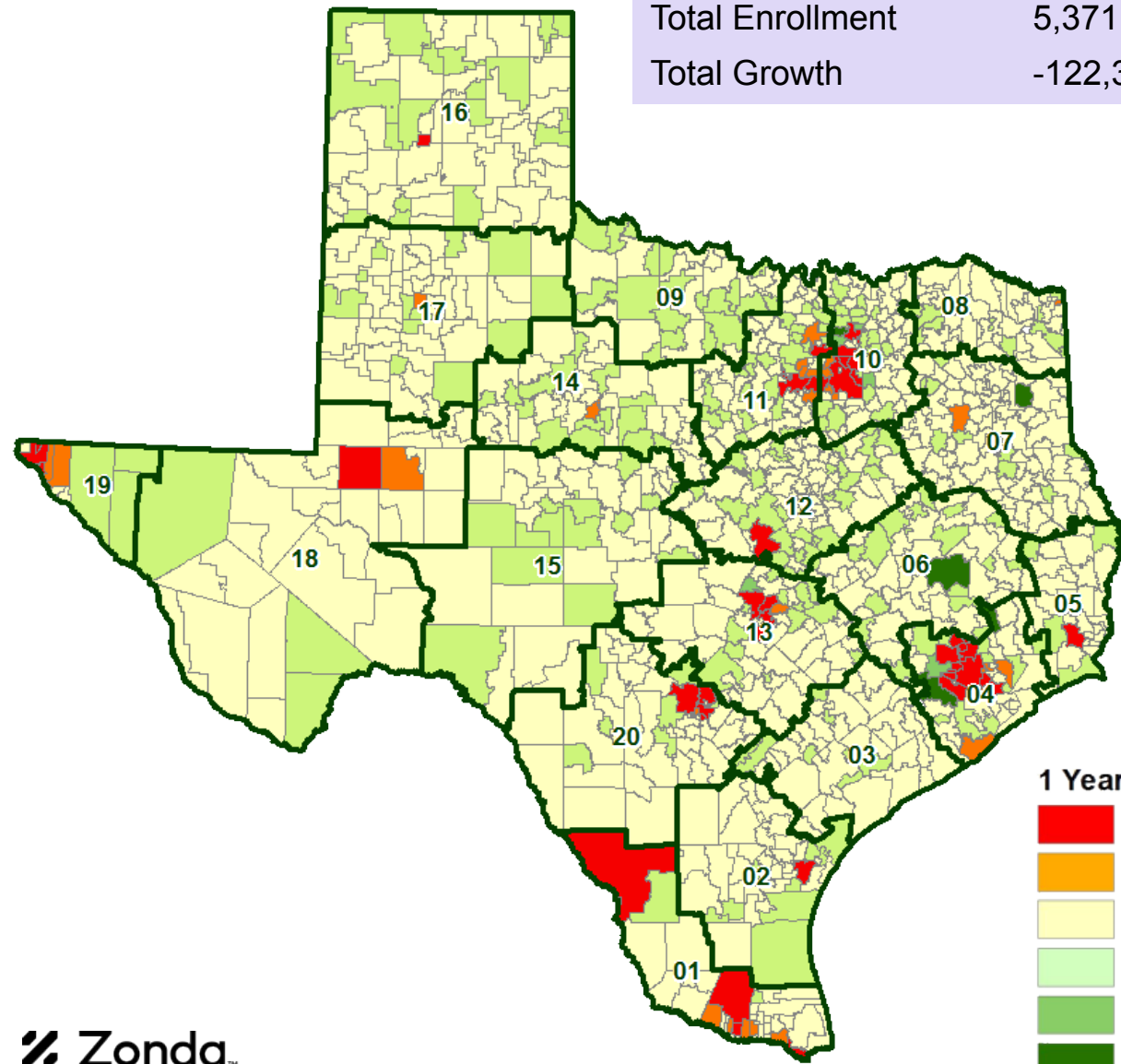
# State Enrollment Trends

## 2020/21 State Enrollment

Total Enrollment	5,371,590
Total Growth	-122,350

## 2021/22 State Enrollment

Total Enrollment	5,427,370
Total Growth	55,780



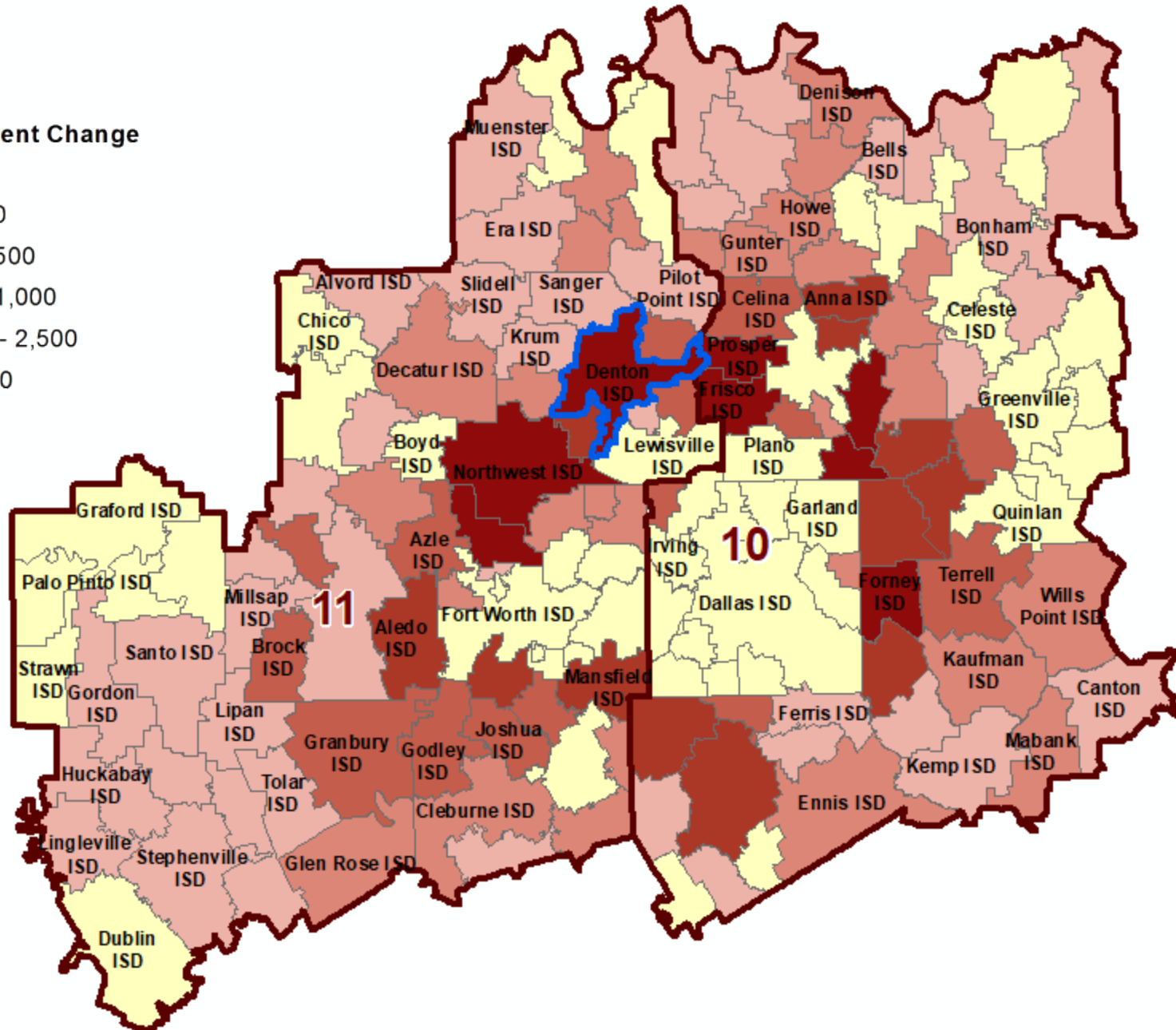
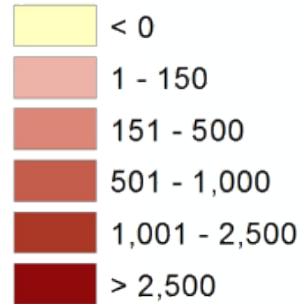
### 1 Year Enrollment Change

- -1,000 or more
- -500 to -1,000
- 0 to -500
- 1 - 500
- 501 - 1,000
- > 1,000



# Region 10 & 11 Enrollment Trends

## 5 Yr Enrollment Change

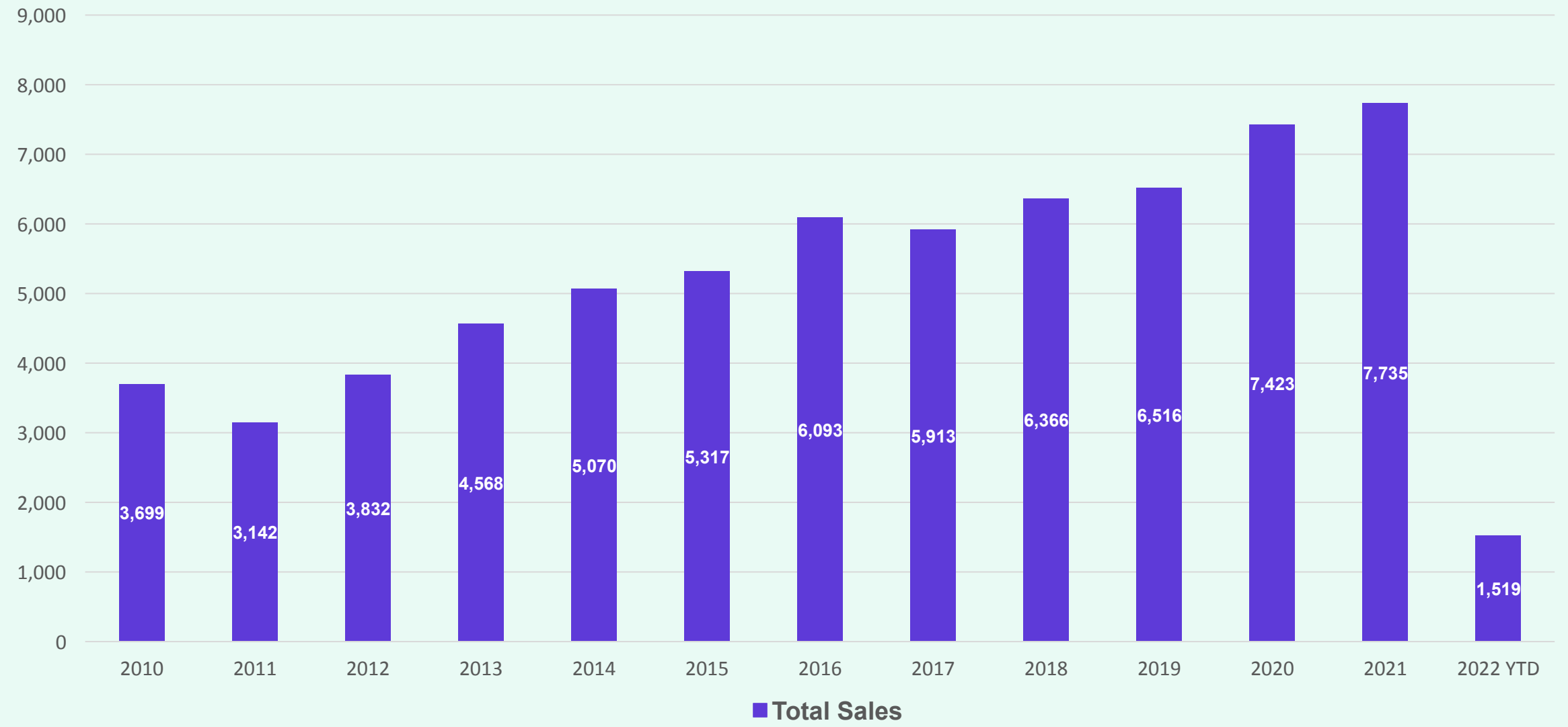


- Denton ISD enrollment increased by 3,323 students between 2016/17 and 2021/22, an increase of 11.6%
- 2021/22 DISD enrollment is up 1,684 students from 2020/21, an **increase of 5.6%**
- Region 10 has seen an overall enrollment increase of 12,340 students from 2020/21, a increase of 1.6%
- Region 11 enrollment increased 1.8% from 2020/21, an increase of 10,093 students



# Denton ISD Historical Home Sales

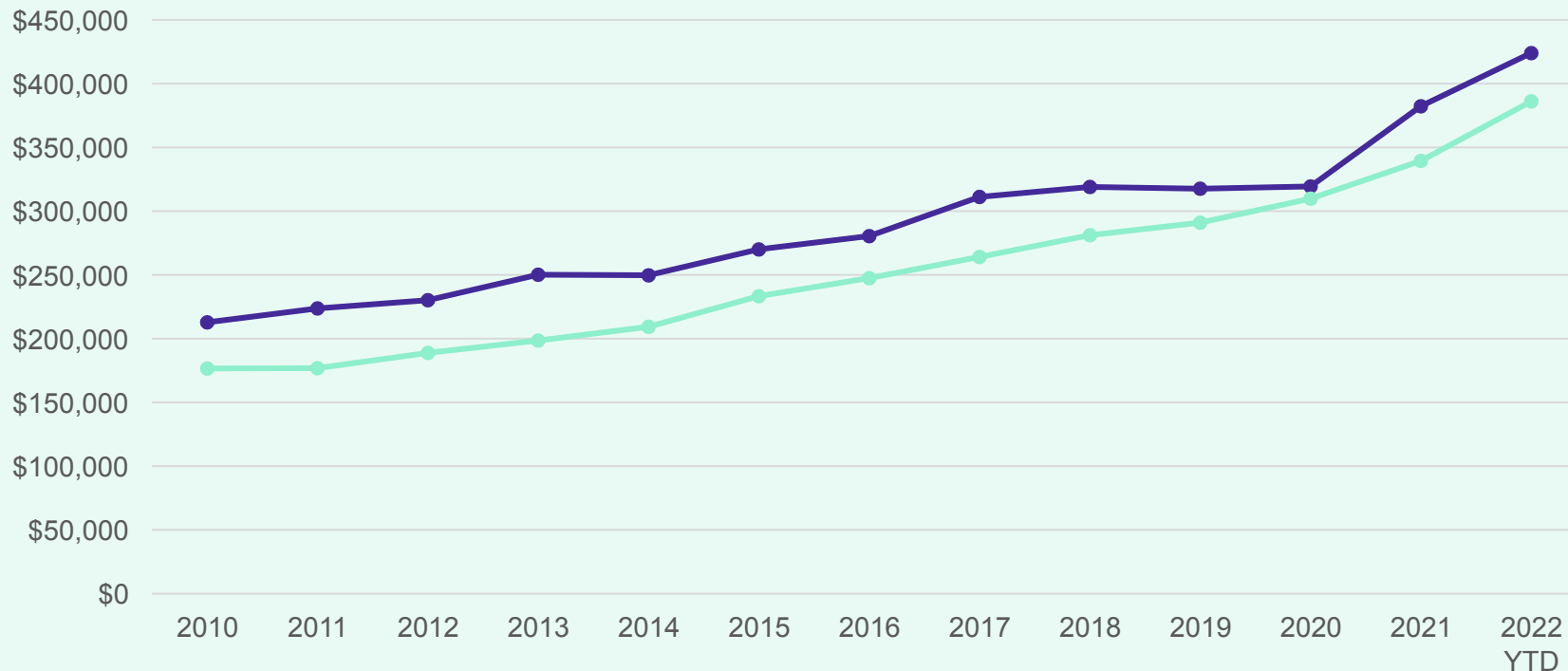
## District Home Sales, 2010 - 2022 YTD





# Denton ISD Home Price Analysis

### Avg New vs. Existing Home Sale Price, 2010 - 2022 YTD



● Avg New Home Sale Price
 ● Avg Existing Home Sale Price

	Avg New Home	Avg Existing Home
2010	\$212,786	\$176,616
2011	\$223,697	\$176,861
2012	\$230,162	\$188,829
2013	\$250,144	\$198,542
2014	\$249,733	\$209,295
2015	\$270,065	\$233,333
2016	\$280,461	\$247,495
2017	\$311,187	\$264,084
2018	\$318,982	\$281,136
2019	\$317,617	\$291,001
2020	\$319,389	\$309,802
2021	\$382,352	\$339,448
2022 YTD	\$424,042	\$386,112

- The average new home sale price in Denton ISD has nearly doubled since 2010, an increase of approximately \$211,256
- The average existing home sale price within Denton ISD has increased nearly 120% or \$209,496 since 2010



# DFW New Home Ranking Report

## ISD Ranked by Annual Closings – 1Q22

Rank	District Name	Annual Starts	Annual Closings	Inventory	VDL	Future
1	NORTHWEST ISD	4,579	3,579	2,467	2,982	40,877
<b>2</b>	<b>DENTON ISD</b>	<b>3,454</b>	<b>2,960</b>	<b>2,577</b>	<b>3,375</b>	<b>31,812</b>
3	PROSPER ISD	2,970	2,688	2,021	2,777	21,907
4	FORNEY ISD	3,162	2,629	1,539	1,466	30,700
5	FRISCO ISD	1,823	2,043	1,236	1,402	9,889
6	DALLAS ISD	1,925	1,595	1,728	2,434	6,656
7	PRINCETON ISD	2,259	1,560	1,143	2,693	9,392
8	ROYSE CITY ISD	1,813	1,525	1,007	2,040	8,595
9	CROWLEY ISD	1,423	1,224	710	1,961	16,812
10	EAGLE MT-SAGINAW ISD	1,192	1,151	692	2,063	19,526
11	CRANDALL ISD	1,293	1,136	516	1,492	13,844
12	ROCKWALL ISD	1,434	1,112	1,044	2,273	9,199
13	MIDLOTHIAN ISD	1,457	1,100	1,039	1,208	20,348
14	ANNA ISD	1,200	1,030	641	841	7,634
15	MCKINNEY ISD	1,358	1,009	873	1,683	14,404
16	COMMUNITY ISD	1,377	976	867	768	8,604
17	MANSFIELD ISD	1,275	962	961	1,739	6,557
18	WAXAHACHIE ISD	1,139	957	734	1,036	22,278
19	AUBREY ISD	1,175	943	810	1,292	5,733
20	LEWISVILLE ISD	1,194	918	963	1,568	2,373

\* Based on additional Zonda Education housing research





# District New Home Starts and Closings

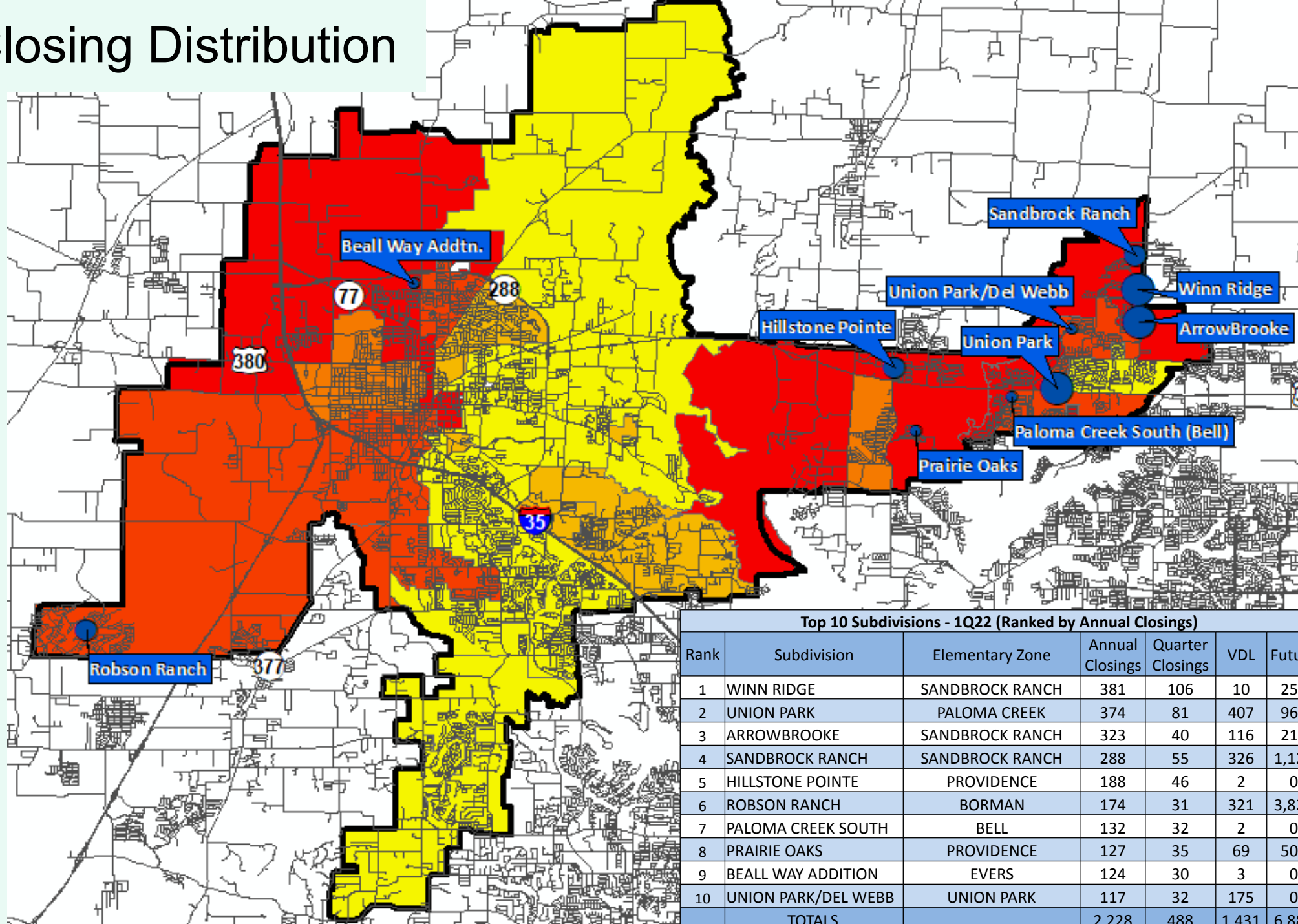


Starts	2017	2018	2019	2020	2021	2022
1Q	447	555	572	516	960	845
2Q	536	801	617	748	1084	
3Q	608	563	686	684	1,005	
4Q	502	571	757	880	761	
<b>Total</b>	<b>2,093</b>	<b>2,490</b>	<b>2,632</b>	<b>2,828</b>	<b>3,810</b>	<b>845</b>

Closings	2017	2018	2019	2020	2021	2022
1Q	436	561	495	626	639	617
2Q	450	563	572	726	936	
3Q	559	561	678	756	727	
4Q	479	555	701	640	786	
<b>Total</b>	<b>1,924</b>	<b>2,240</b>	<b>2,446</b>	<b>2,748</b>	<b>3,088</b>	<b>617</b>



# Annual Closing Distribution



## Annual Closings by Sub

- < 150
- 150 - 300
- > 300

## Annual Closings by Elem

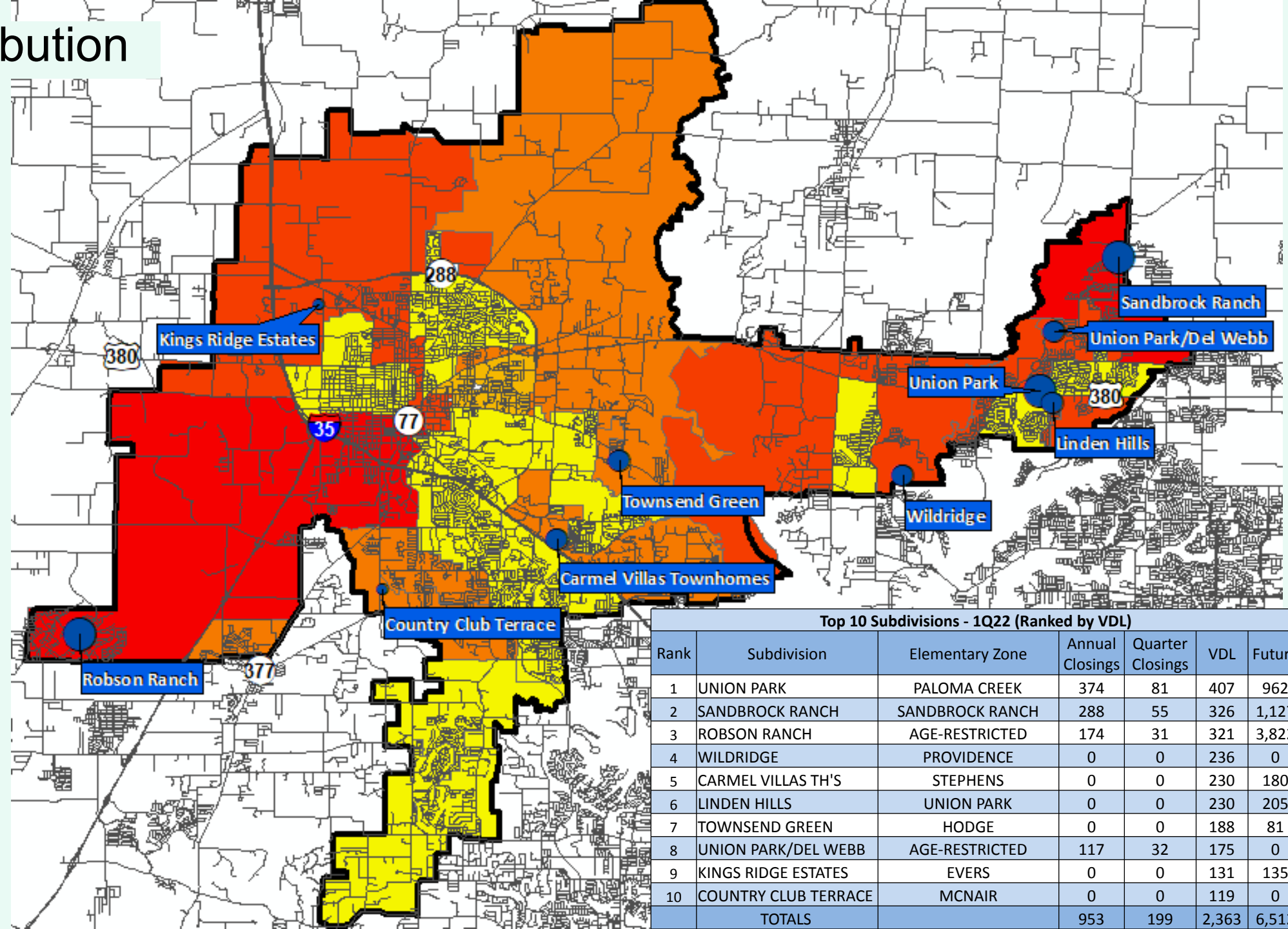
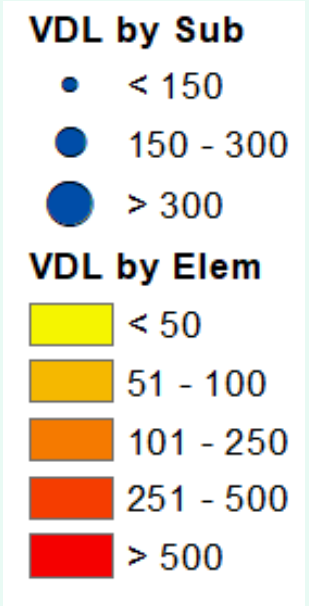
- < 25
- 26 - 50
- 51 - 100
- 101 - 250
- > 250

Top 10 Subdivisions - 1Q22 (Ranked by Annual Closings)

Rank	Subdivision	Elementary Zone	Annual Closings	Quarter Closings	VDL	Future
1	WINN RIDGE	SANDBROCK RANCH	381	106	10	253
2	UNION PARK	PALOMA CREEK	374	81	407	962
3	ARROWBROOKE	SANDBROCK RANCH	323	40	116	213
4	SANDBROCK RANCH	SANDBROCK RANCH	288	55	326	1,127
5	HILLSTONE POINTE	PROVIDENCE	188	46	2	0
6	ROBSON RANCH	BORMAN	174	31	321	3,822
7	PALOMA CREEK SOUTH	BELL	132	32	2	0
8	PRAIRIE OAKS	PROVIDENCE	127	35	69	509
9	BEALL WAY ADDITION	EVERS	124	30	3	0
10	UNION PARK/DEL WEBB	UNION PARK	117	32	175	0
TOTALS			2,228	488	1,431	6,886



# VDL Distribution



Top 10 Subdivisions - 1Q22 (Ranked by VDL)

Rank	Subdivision	Elementary Zone	Annual Closings	Quarter Closings	VDL	Future
1	UNION PARK	PALOMA CREEK	374	81	407	962
2	SANDBROCK RANCH	SANDBROCK RANCH	288	55	326	1,127
3	ROBSON RANCH	AGE-RESTRICTED	174	31	321	3,822
4	WILDRIDGE	PROVIDENCE	0	0	236	0
5	CARMEL VILLAS TH'S	STEPHENS	0	0	230	180
6	LINDEN HILLS	UNION PARK	0	0	230	205
7	TOWNSEND GREEN	HODGE	0	0	188	81
8	UNION PARK/DEL WEBB	AGE-RESTRICTED	117	32	175	0
9	KINGS RIDGE ESTATES	EVERS	0	0	131	135
10	COUNTRY CLUB TERRACE	MCNAIR	0	0	119	0
TOTALS			953	199	2,363	6,512



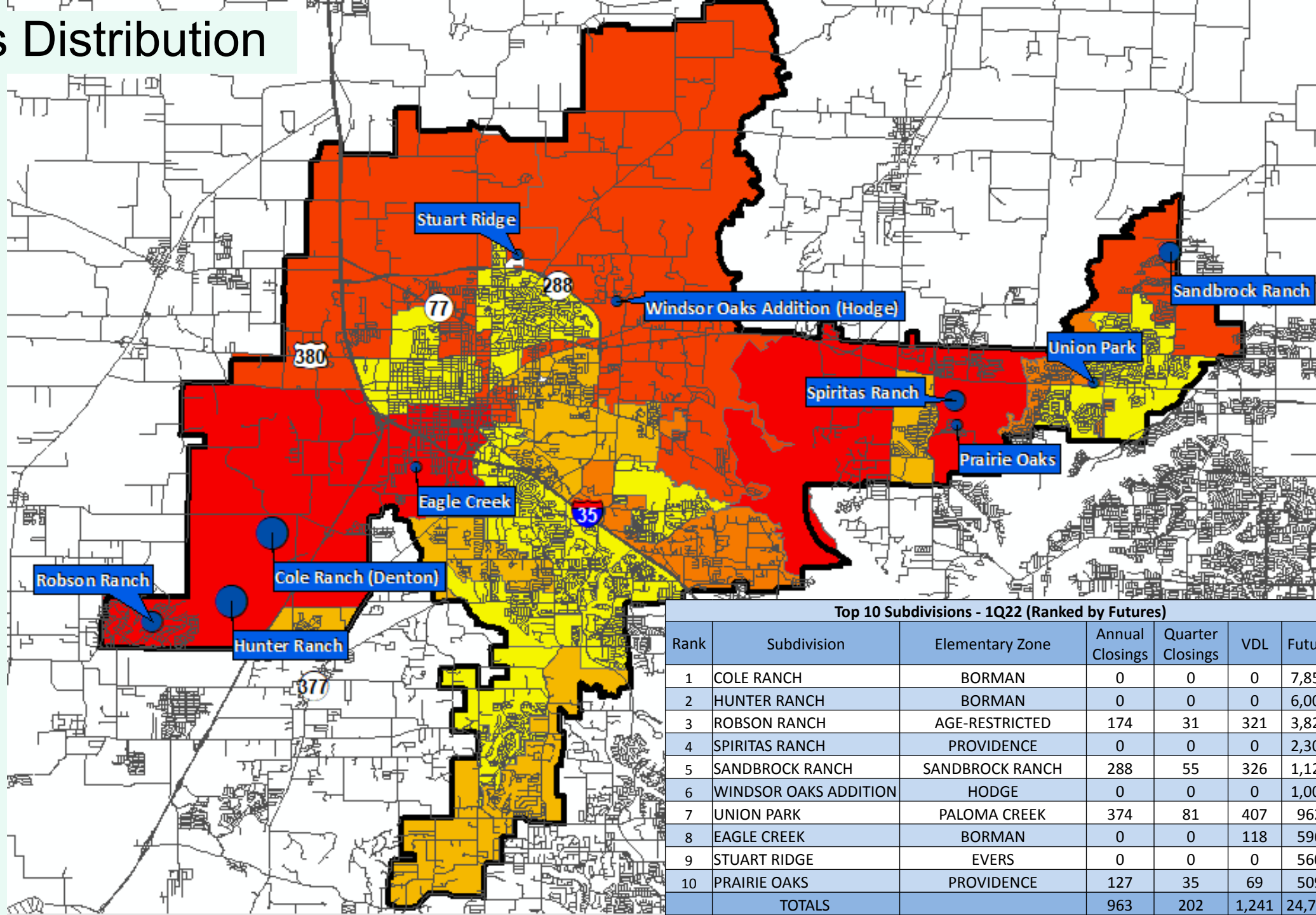
# Futures Distribution

## Futures by Sub

- < 1000
- 1000 - 5000
- > 5000

## Futures by Elem

- < 250
- 251 - 500
- 501 - 1000
- 1001 - 2500
- > 2500



Top 10 Subdivisions - 1Q22 (Ranked by Futures)

Rank	Subdivision	Elementary Zone	Annual Closings	Quarter Closings	VDL	Future
1	COLE RANCH	BORMAN	0	0	0	7,858
2	HUNTER RANCH	BORMAN	0	0	0	6,000
3	ROBSON RANCH	AGE-RESTRICTED	174	31	321	3,822
4	SPIRITAS RANCH	PROVIDENCE	0	0	0	2,307
5	SANDBROCK RANCH	SANDBROCK RANCH	288	55	326	1,127
6	WINDSOR OAKS ADDITION	HODGE	0	0	0	1,000
7	UNION PARK	PALOMA CREEK	374	81	407	962
8	EAGLE CREEK	BORMAN	0	0	118	596
9	STUART RIDGE	EVERS	0	0	0	560
10	PRAIRIE OAKS	PROVIDENCE	127	35	69	509
TOTALS			963	202	1,241	24,741



# District Housing Overview by Elementary

Elementary	Annual Starts	Quarter Starts	Annual Closings	Quarter Closings	Under Const.	Inventory	Vacant Dev. Lots	Future
ADKINS	25	6	5	0	24	25	29	343
ALEXANDER	43	42	8	0	88	88	54	425
BELL	110	0	132	32	34	34	2	53
BLANTON	34	5	21	1	24	26	9	0
BORMAN	311	79	174	31	207	222	545	19,288
CROSS OAKS	63	10	82	17	41	43	4	251
EP RAYZOR	0	0	0	0	0	0	0	0
EVERS	326	29	274	76	246	263	260	1,596
GINNINGS	37	2	126	1	5	5	0	8
HAWK	37	12	10	10	26	27	37	30
HODGE	8	1	11	1	6	6	194	2,160
HOUSTON	0	0	0	0	0	0	0	206
MCNAIR	64	64	0	0	64	64	119	156
N RAYZOR	21	0	54	2	1	1	5	37
NELSON	0	0	0	0	0	0	0	4
PALOMA CREEK	345	154	374	81	251	286	407	962
PECAN CREEK	6	0	31	3	0	0	6	21
PROVIDENCE	283	17	325	81	226	243	345	3,221
RIVERA	38	38	0	0	38	38	41	327
RYAN	205	28	129	36	126	134	114	287
SANDBROCK RANCH	1,081	221	992	201	660	736	527	1,678
SAVANNAH	29	4	18	2	26	28	22	16
SCHULTZ	12	0	33	0	0	0	1	0
STEPHENS	35	1	44	10	28	29	249	538
UNION PARK	341	132	117	32	263	279	405	205
<b>Grand Total</b>	<b>3,454</b>	<b>845</b>	<b>2,960</b>	<b>617</b>	<b>2,384</b>	<b>2,577</b>	<b>3,375</b>	<b>31,812</b>

 Highest activity in the category

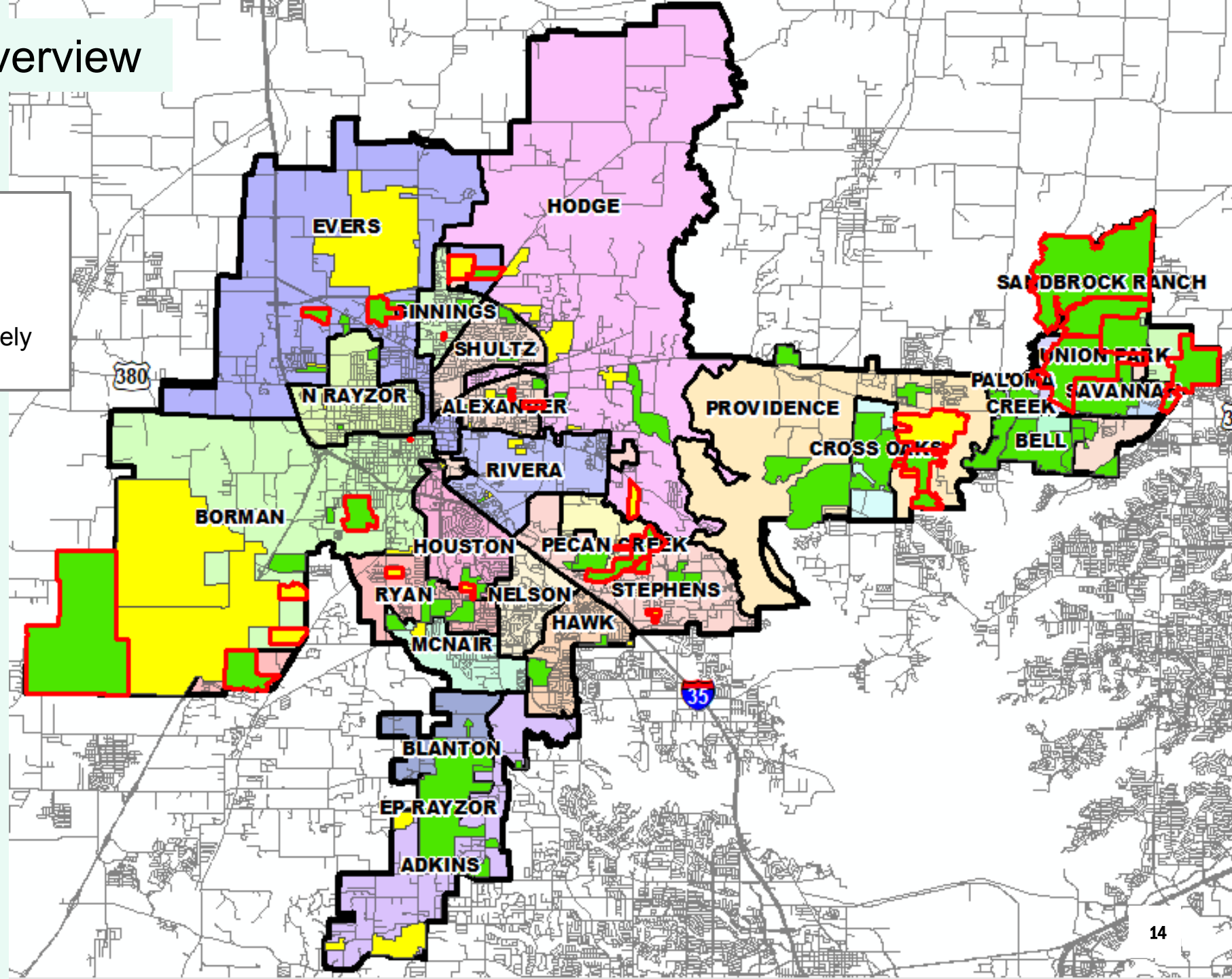
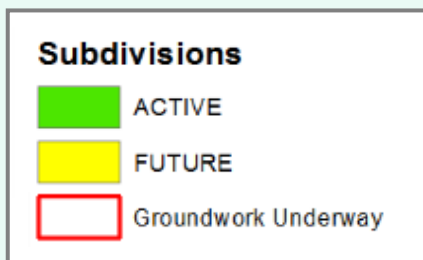
 Second highest activity in the category

 Third highest activity in the category



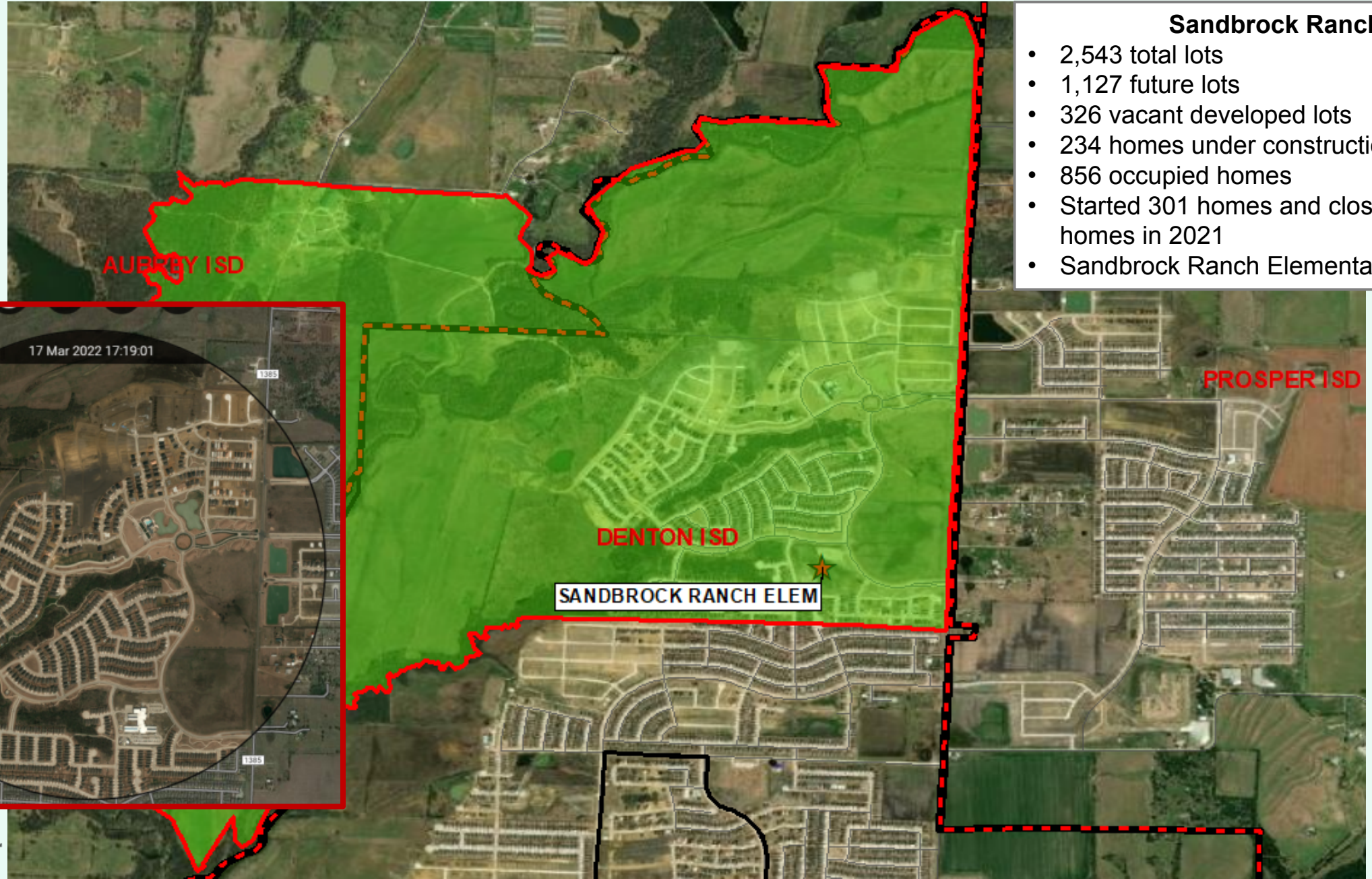
# District Housing Overview

- The district has 65 actively building subdivisions
- Within Denton ISD there are 48 future subdivisions
- Groundwork is underway on approximately 4,750 lots within 29 subdivisions





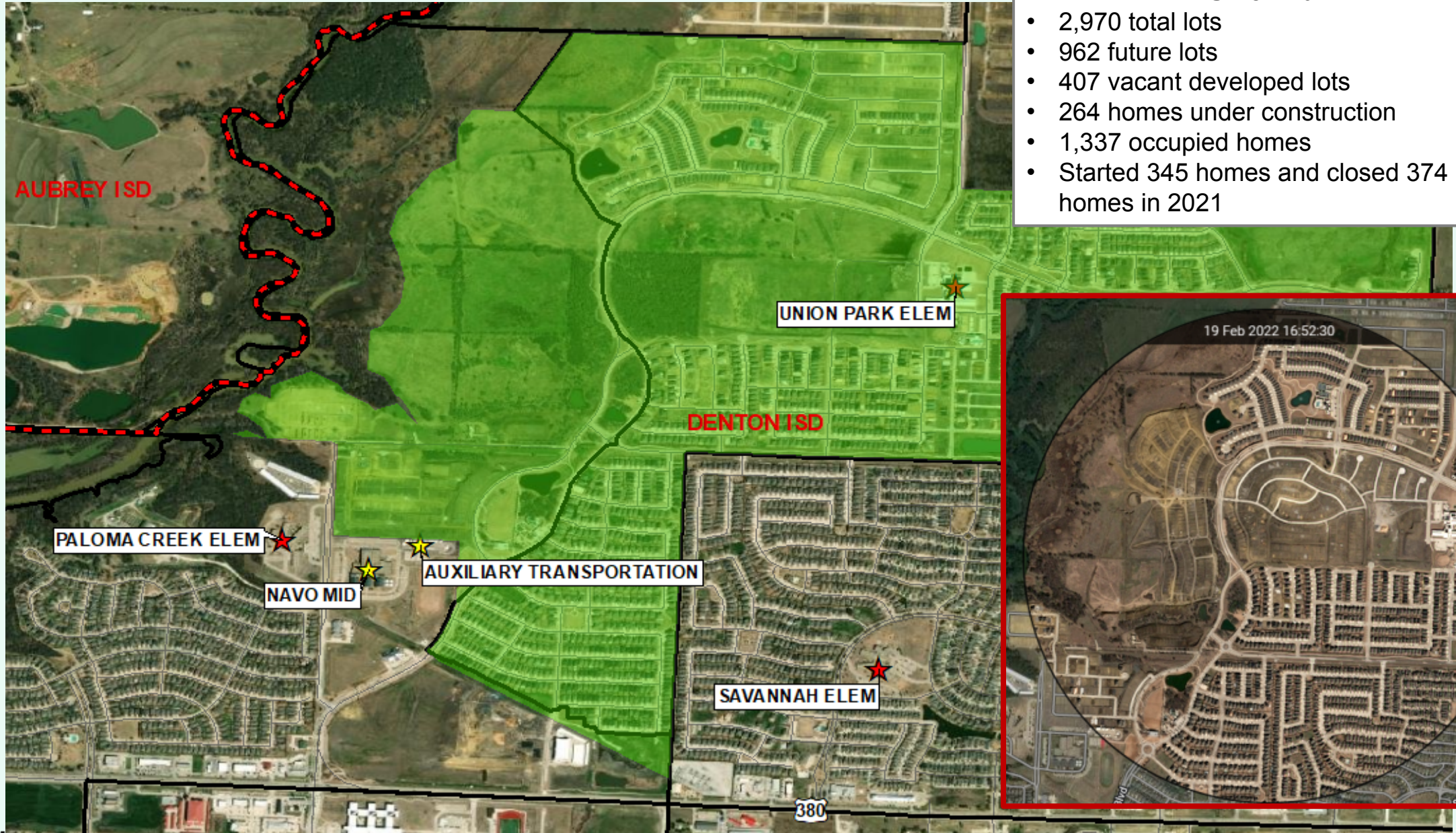
# Residential Activity



- ### Sandbrock Ranch
- 2,543 total lots
  - 1,127 future lots
  - 326 vacant developed lots
  - 234 homes under construction
  - 856 occupied homes
  - Started 301 homes and closed 288 homes in 2021
  - Sandbrock Ranch Elementary Zone



# Residential Activity



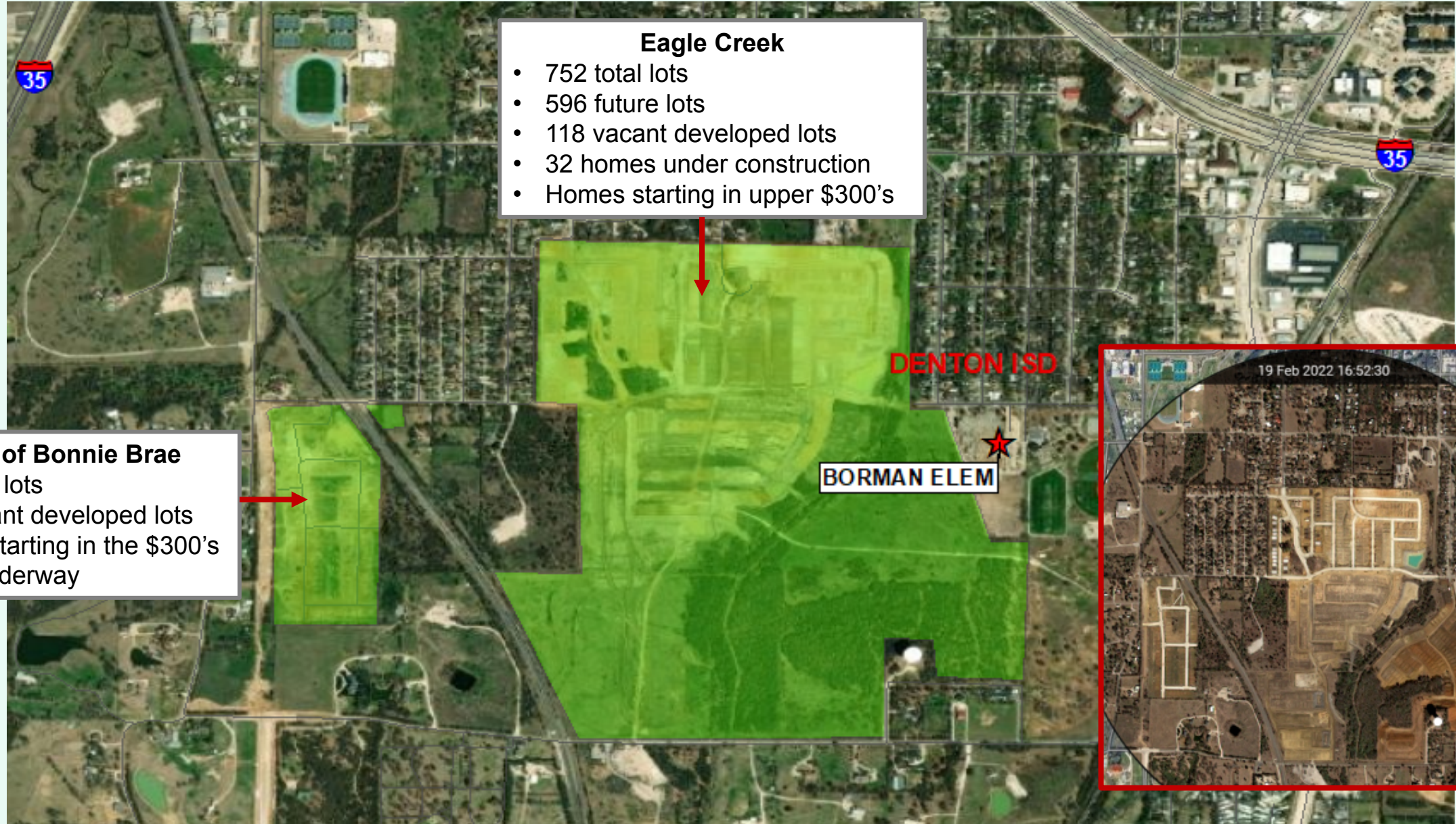
- Union Park**
- 2,970 total lots
  - 962 future lots
  - 407 vacant developed lots
  - 264 homes under construction
  - 1,337 occupied homes
  - Started 345 homes and closed 374 homes in 2021







# Residential Activity



**Eagle Creek**

- 752 total lots
- 596 future lots
- 118 vacant developed lots
- 32 homes under construction
- Homes starting in upper \$300's

**Courts of Bonnie Brae**

- 106 total lots
- 106 vacant developed lots
- Homes starting in the \$300's
- Sales underway

DENTON ISD

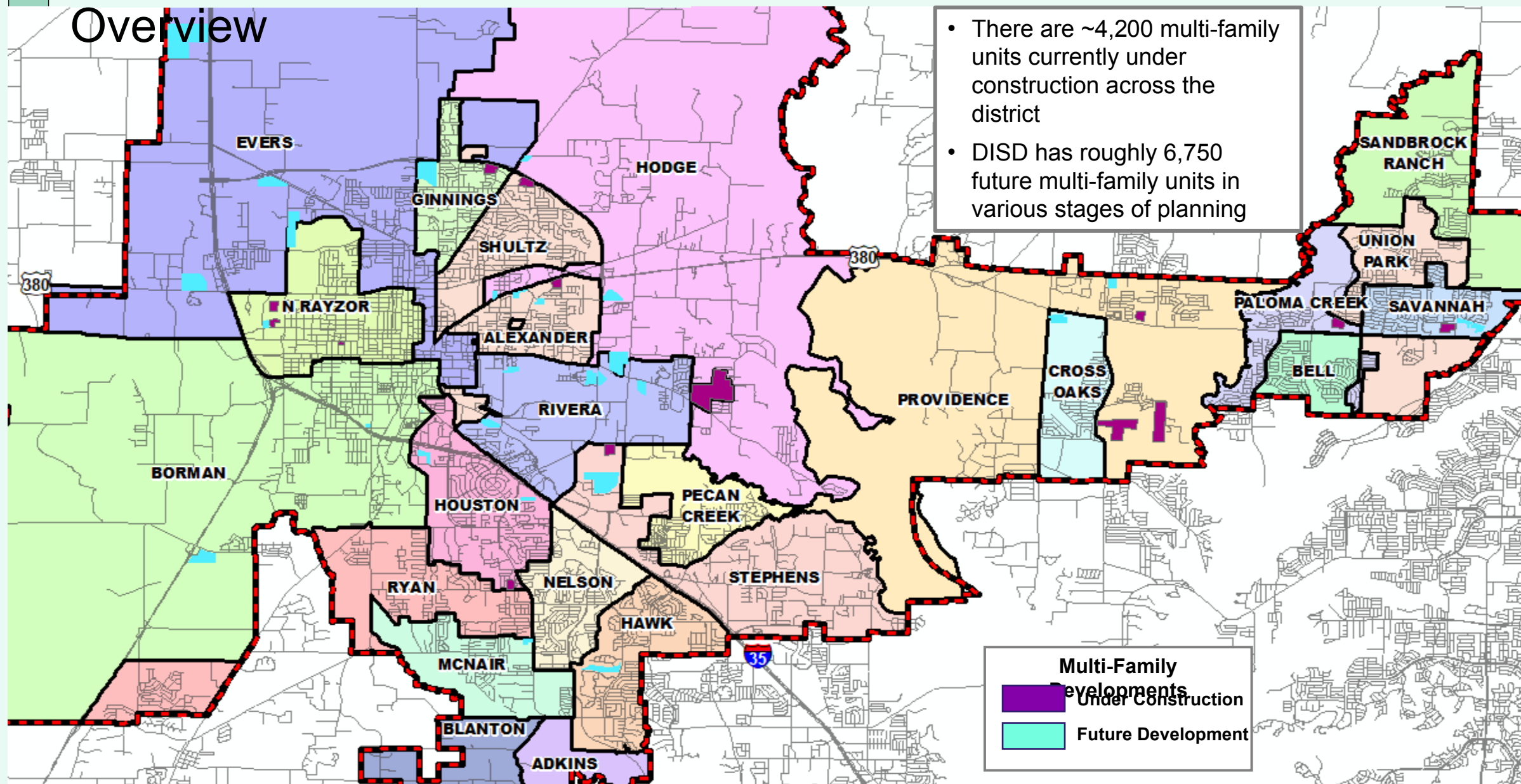
BORMAN ELEM

19 Feb 2022 16:52:30



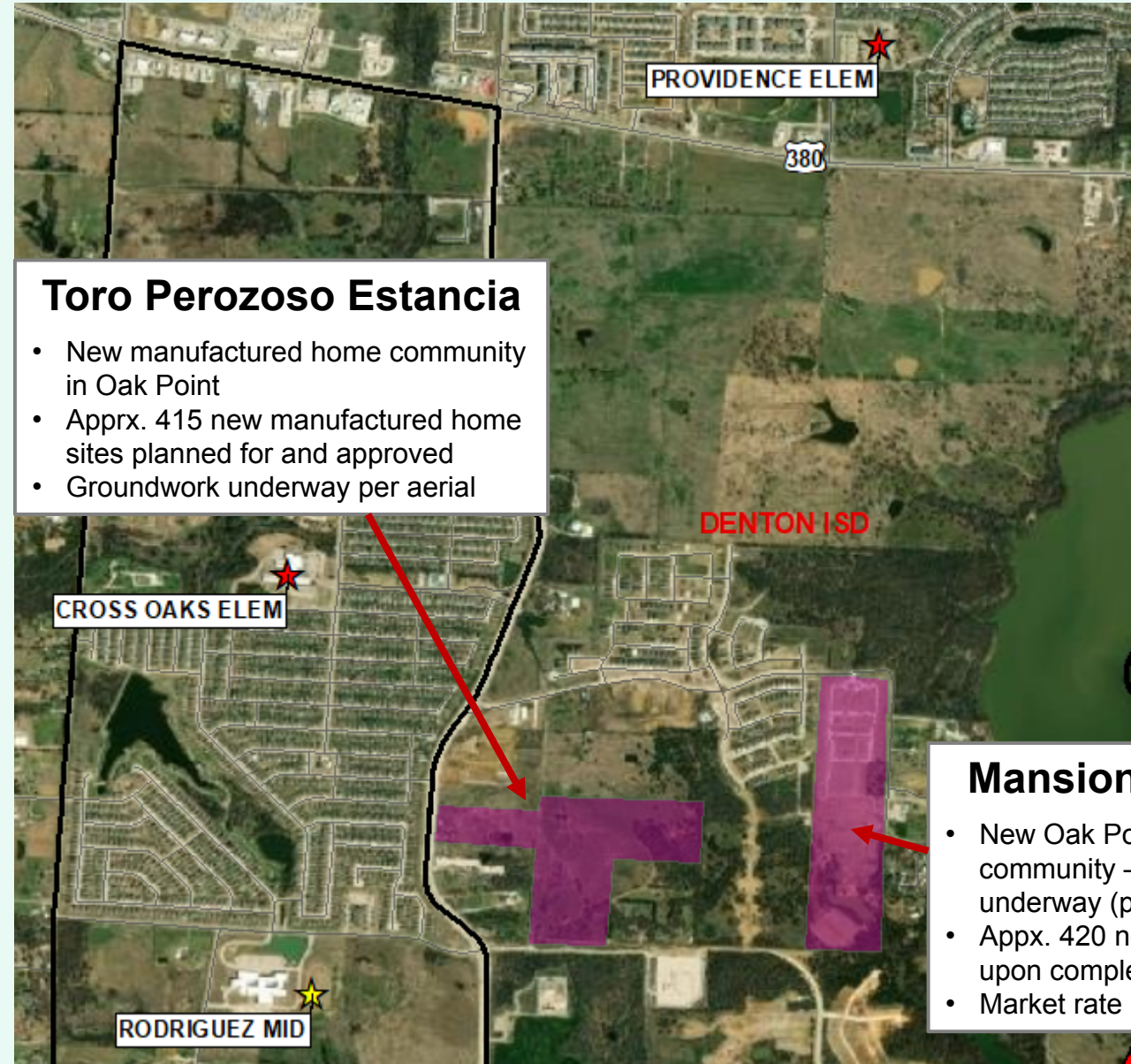
# District Multi-Family

## Overview





# Multi-Family Activity

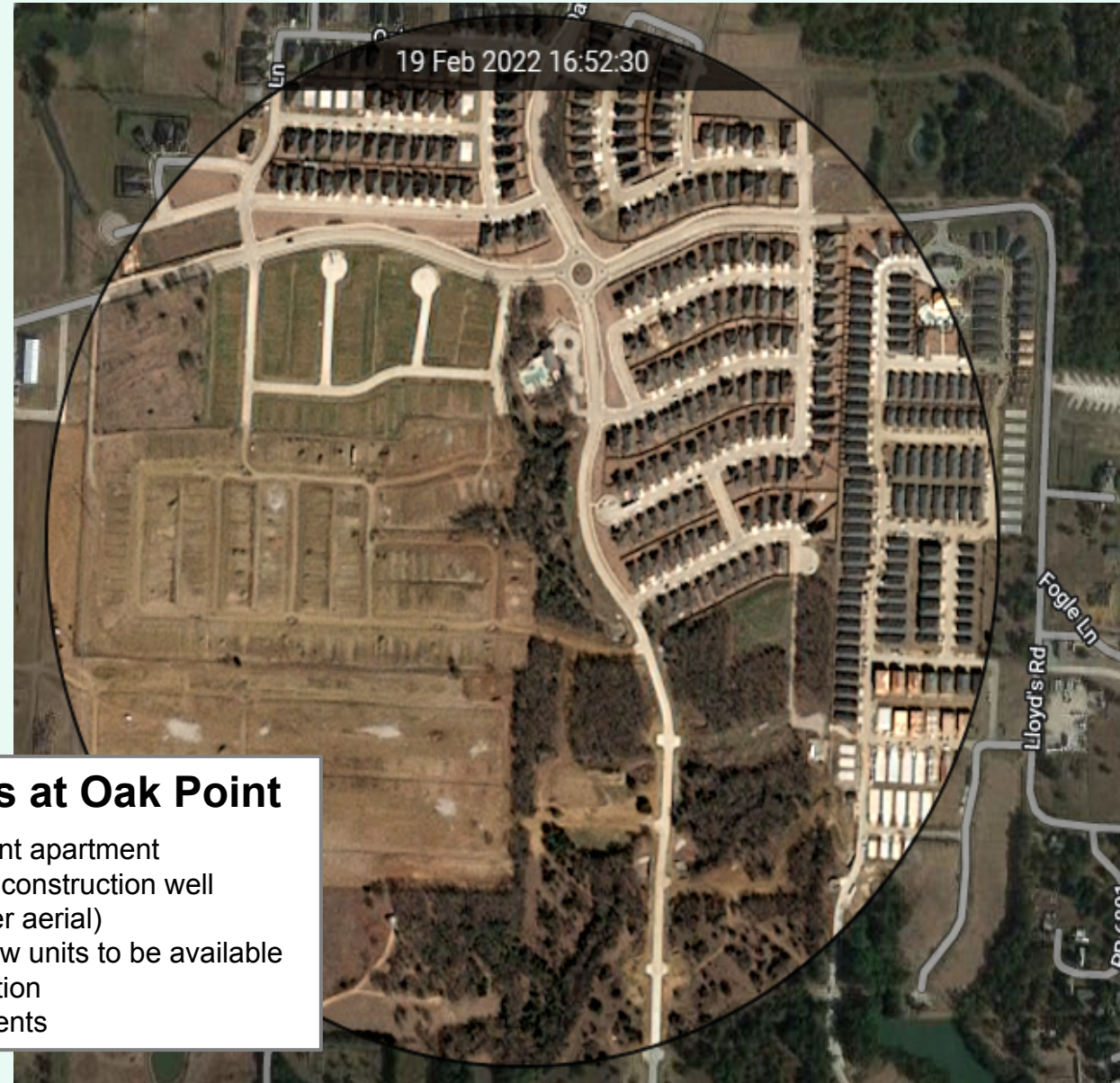


## Toro Perozoso Estancia

- New manufactured home community in Oak Point
- Apprx. 415 new manufactured home sites planned for and approved
- Groundwork underway per aerial

## Mansions at Oak Point

- New Oak Point apartment community – construction well underway (per aerial)
- Apprx. 420 new units to be available upon completion
- Market rate rents





# TEA Transfer Report

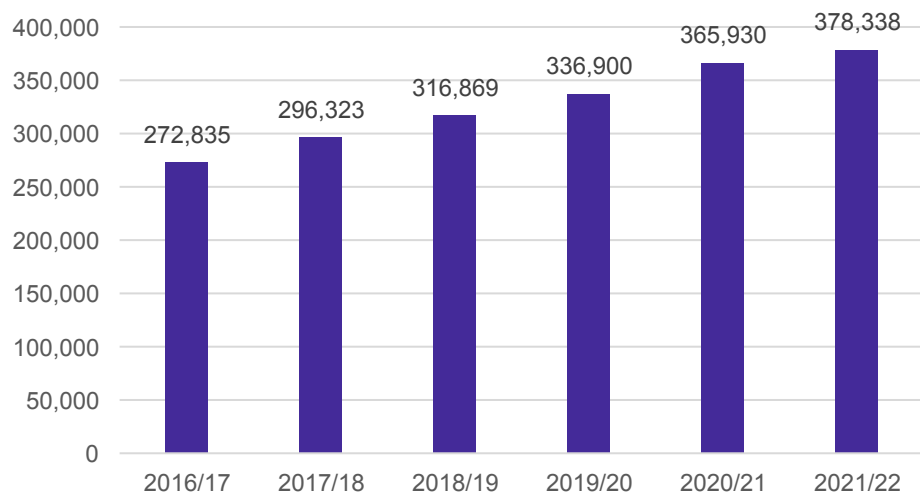
Transfers In From:	2016/17	2017/18	2018/19	2019/20	2020/21	2021/22	5 Year Change
Argyle ISD	8	11	11	15	14	13	5
Aubrey ISD	11	26	36	33	46	57	46
Krum ISD	20	19	17	18	27	40	20
Lake Dallas ISD	20	17	20	20	42	53	33
Lewisville ISD	11	19	15	0	19	37	26
Little Elm ISD	0	14	18	22	32	28	28
Northwest ISD	0	0	0	12	17	19	19
Ponder ISD	0	0	0	0	10	11	11
Sanger ISD	10	21	13	17	33	43	33
<b>Total Transfers In*</b>	<b>120</b>	<b>166</b>	<b>176</b>	<b>183</b>	<b>288</b>	<b>388</b>	<b>268</b>
Transfers Out To:	2016/17	2017/18	2018/19	2019/20	2020/21	2021/22	5 Year Change
Argyle ISD	78	87	83	81	82	98	20
Aubrey ISD	93	94	102	125	146	125	32
Brazos River Charter School	0	0	0	33	22	10	10
Carrollton-Farmers Branch ISD	10	0	23	28	33	36	26
Coppell ISD	0	0	10	13	13	11	11
Frisco ISD	75	90	110	123	144	154	79
Grapevine-Colleyville ISD	15	16	23	35	55	40	25
Hallsville ISD	0	0	24	55	81	105	105
Krum ISD	25	25	23	29	19	20	-5
Lake Dallas ISD	226	257	301	322	339	383	157
Leadership Prep School	25	36	57	93	116	130	105
Lewisville ISD	133	139	195	252	308	354	221
Little Elm ISD	51	61	59	70	72	97	46
North Texas Collegiate Academy	134	214	225	263	212	256	122
Northwest ISD	22	18	26	29	25	25	3
Plano ISD	8	12	10	10	10	11	3
Ponder ISD	21	25	25	21	23	21	0
Premier High Schools	27	33	25	14	17	32	5
Prosper ISD	50	42	45	55	65	67	17
Sanger ISD	19	23	26	17	26	24	5
Texas College Preperatory Academies	599	672	783	914	1,044	1,166	567
Universal Academy	9	13	11	16	0	14	5
Westlake Academy Charter School	7	0	0	11	17	12	5
Winfree Academy Charter Schools	14	21	14	0	14	14	0
<b>Total Transfers Out*</b>	<b>1,727</b>	<b>1,974</b>	<b>2,293</b>	<b>2,718</b>	<b>2,998</b>	<b>3,325</b>	<b>1,598</b>

\* Totals include additional districts due to TEA rounding rules

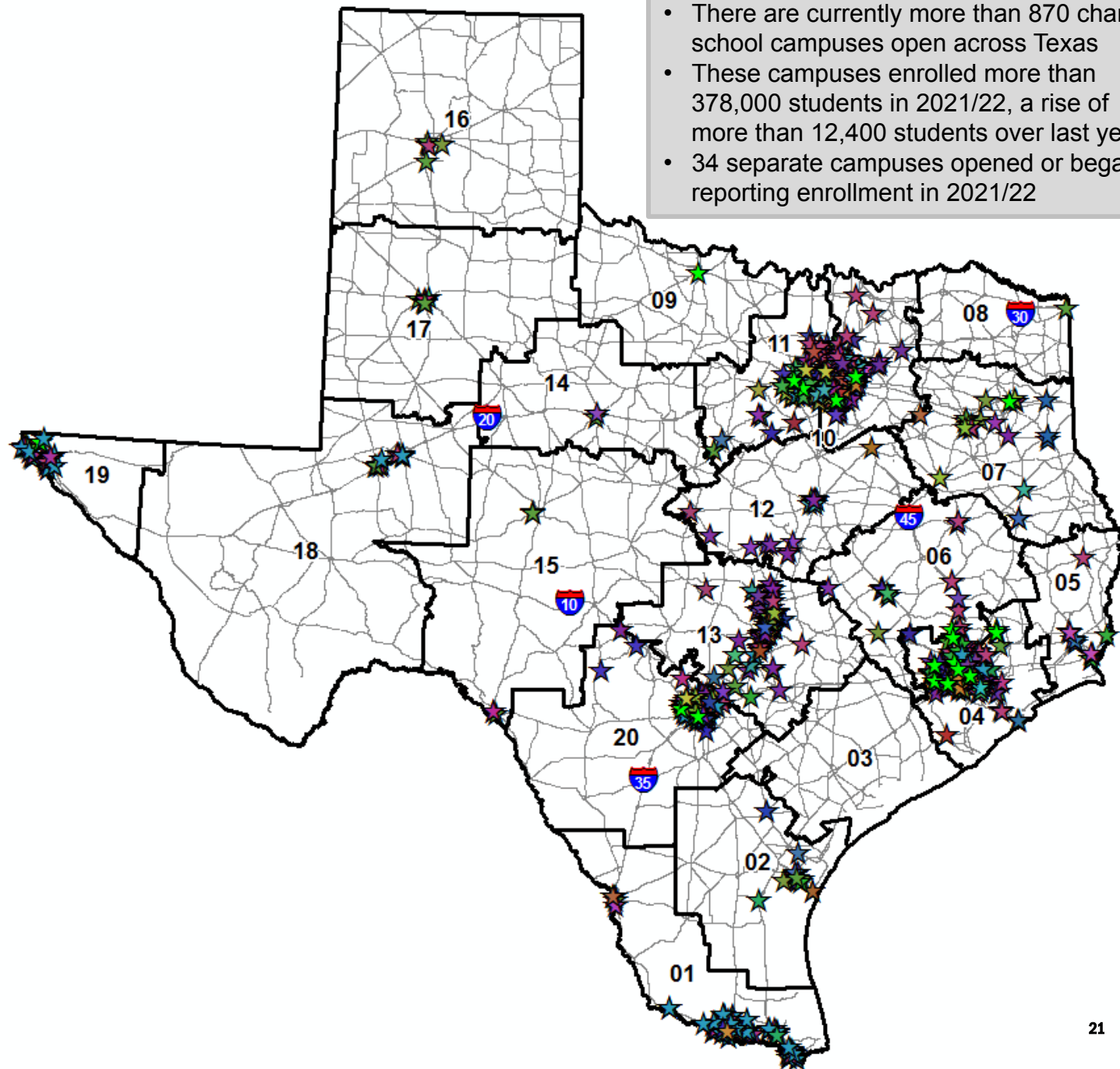
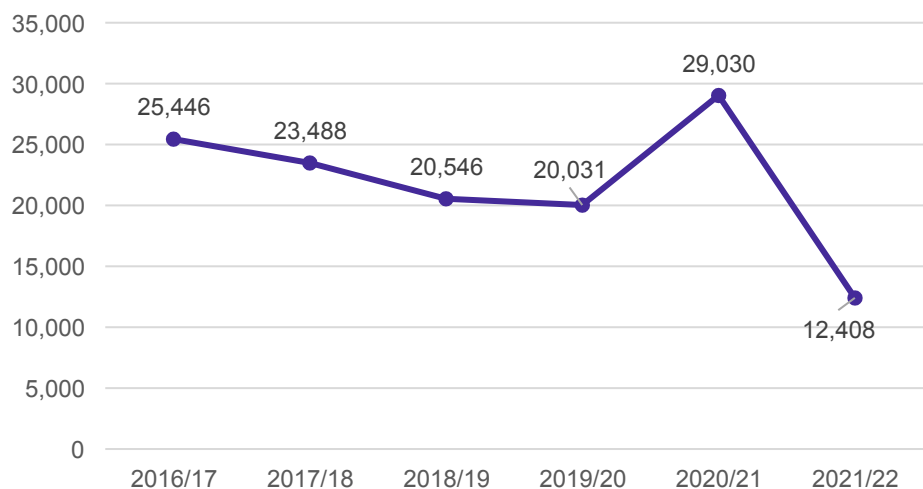


# Charter Schools in Texas

### Total Charter Enrollment



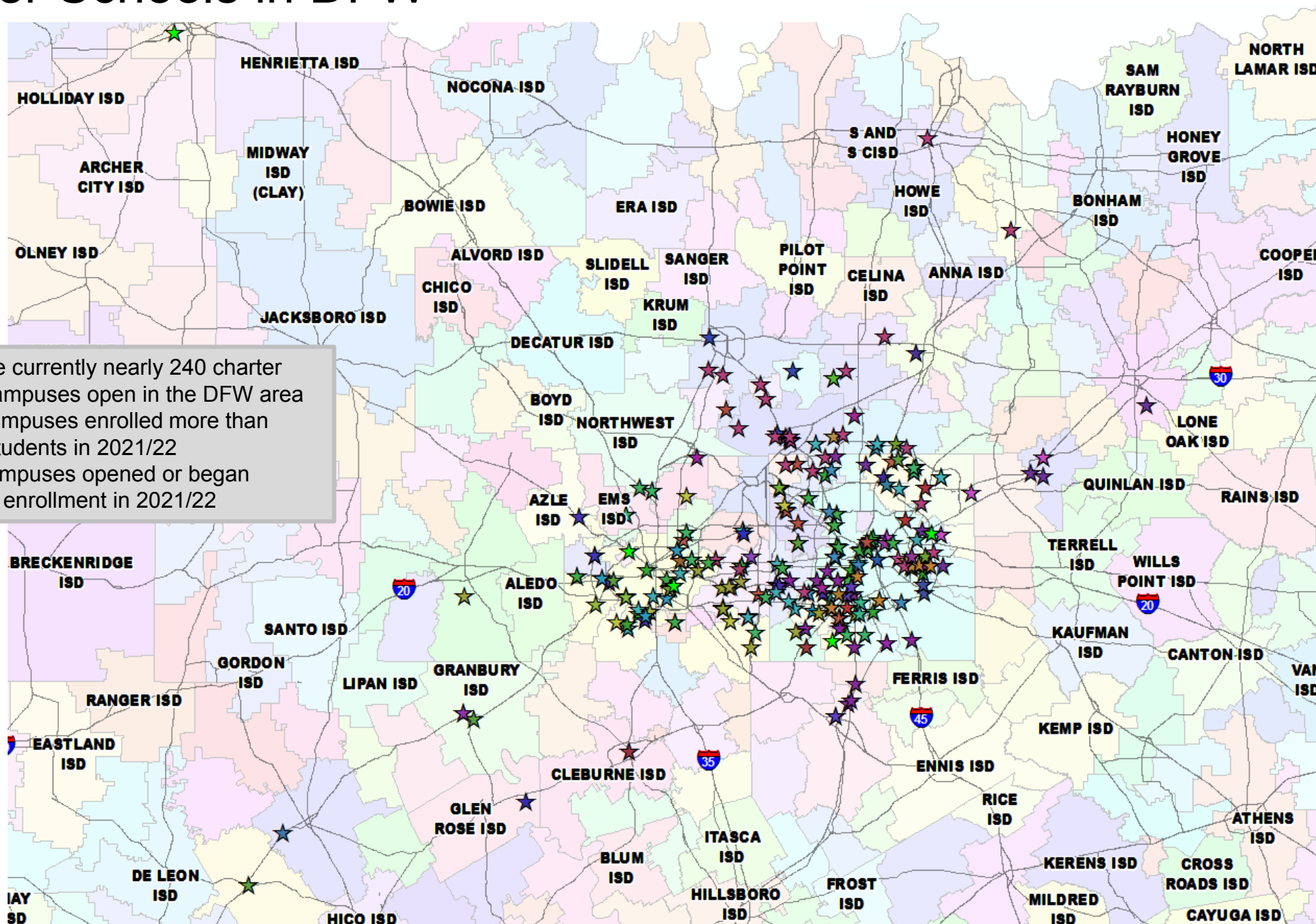
### Charter Enrollment Change



- There are currently more than 870 charter school campuses open across Texas
- These campuses enrolled more than 378,000 students in 2021/22, a rise of more than 12,400 students over last year
- 34 separate campuses opened or began reporting enrollment in 2021/22



# Charter Schools in DFW



- There are currently nearly 240 charter school campuses open in the DFW area
- These campuses enrolled more than 82,600 students in 2021/22
- 8 new campuses opened or began reporting enrollment in 2021/22



# Ten Year Forecast by Grade Level

YEAR	EE	PK	K	1st	2nd	3rd	4th	5th	6th	7th	8th	9th	10th	11th	12th	Total	Total Growth	Percent
2017/18	98	1,048	2,081	2,100	2,119	2,230	2,251	2,300	2,264	2,232	2,204	2,346	2,245	2,018	1,887	29,423		
2018/19	78	1,082	2,177	2,117	2,182	2,136	2,274	2,303	2,335	2,328	2,312	2,371	2,313	2,173	1,988	30,169	746	2.5%
2019/20	90	1,099	2,157	2,279	2,155	2,222	2,179	2,323	2,333	2,409	2,403	2,543	2,385	2,220	2,111	30,908	739	2.4%
2020/21	92	978	2,062	2,115	2,213	2,092	2,198	2,120	2,273	2,319	2,402	2,455	2,402	2,324	2,222	30,267	-641	-2.1%
2021/22	77	1,205	2,341	2,291	2,256	2,380	2,225	2,312	2,237	2,385	2,443	2,615	2,516	2,434	2,289	32,006	1,739	5.7%
2022/23	77	1,317	2,441	2,511	2,407	2,361	2,498	2,318	2,373	2,330	2,463	2,667	2,644	2,546	2,427	33,380	1,374	4.3%
2023/24	77	1,350	2,525	2,623	2,653	2,539	2,494	2,625	2,375	2,475	2,395	2,679	2,692	2,678	2,549	34,728	1,348	4.0%
2024/25	77	1,432	2,646	2,716	2,760	2,784	2,651	2,634	2,669	2,467	2,558	2,615	2,691	2,739	2,673	36,112	1,383	4.0%
2025/26	77	1,495	2,760	2,806	2,853	2,909	2,907	2,789	2,684	2,760	2,539	2,783	2,626	2,734	2,740	37,462	1,350	3.7%
2026/27	77	1,565	2,865	2,923	2,921	2,970	3,044	3,038	2,841	2,777	2,837	2,761	2,812	2,668	2,738	38,837	1,375	3.7%
2027/28	77	1,621	2,950	2,977	3,015	3,006	3,081	3,149	3,090	2,930	2,848	3,073	2,779	2,855	2,669	40,121	1,284	3.3%
2028/29	77	1,661	2,980	3,089	3,081	3,126	3,119	3,201	3,201	3,173	2,993	3,089	3,100	2,820	2,859	41,569	1,448	3.6%
2029/30	77	1,688	3,060	3,114	3,227	3,187	3,231	3,227	3,258	3,285	3,243	3,244	3,125	3,146	2,821	42,934	1,364	3.3%
2030/31	77	1,731	3,130	3,192	3,232	3,328	3,286	3,329	3,279	3,346	3,355	3,516	3,279	3,173	3,147	44,400	1,466	3.4%
2031/32	77	1,756	3,158	3,266	3,310	3,331	3,432	3,404	3,387	3,368	3,421	3,636	3,543	3,328	3,174	45,592	1,192	2.7%

Yellow box = largest grade per year  
Green box = second largest grade per year



# Ten Year Forecast by Elementary

Ca

Campus Name	HISTORY			ENROLLMENT PROJECTIONS									
	Capacity	2020/21	Fall 2021/22	2022/23	2023/24	2024/25	2025/26	2026/27	2027/28	2028/29	2029/30	2030/31	2030/32
Alexander Elementary School	740	580	600	592	600	613	621	636	650	654	669	681	692
Adkins Elementary School	740	435	444	454	474	495	487	513	513	517	520	514	511
Bell Elementary School	740	653	714	718	715	717	713	713	716	718	724	733	738
Blanton Elementary School	740	479	492	504	508	512	514	520	517	515	515	524	534
Borman Elementary School	740	434	432	430	473	587	742	879	1,013	1,151	1,284	1,401	1,518
Cross Oaks Elementary School	740	668	720	728	730	756	772	786	799	803	802	813	813
E P Rayzor Elementary School	740	311	310	313	306	305	310	319	322	333	341	350	359
Evers Park Elementary School	740	543	621	680	771	827	925	996	1,004	1,023	1,049	1,087	1,117
Ginnings Elementary School	740	583	665	717	752	778	812	822	818	803	792	783	774
Hodge Elementary School	740	618	658	680	737	828	905	1,014	1,057	1,087	1,126	1,172	1,195
Sam Houston Elementary School	740	530	532	534	537	540	568	563	568	573	585	594	609
Nelson Elementary School	740	577	569	553	579	576	595	594	607	616	608	611	615
McNair Elementary School	740	534	533	515	511	542	550	562	565	573	576	592	609
Hawk Elementary School	740	568	595	582	598	589	571	613	622	632	634	649	660
Olive Stephens Elementary School	740	379	421	487	556	626	701	771	777	782	786	801	813
Paloma Creek Elementary School	740	648	685	718	742	785	843	858	885	904	915	936	953
Pecan Creek Elementary School	740	643	663	658	664	657	666	673	668	662	663	653	651
Providence Elementary School	740	554	656	760	889	1,025	1,134	1,242	1,289	1,339	1,393	1,454	1,514
Newton Rayzor Elementary School	740	614	632	640	644	641	653	663	670	677	682	686	683
Rivera Elementary School	740	540	625	673	691	706	756	777	754	743	743	738	728
Sandbrock Ranch Elementary School	740	0	0	631	789	855	944	995	1,052	1,102	1,166	1,212	1,256
Savannah Elementary School	740	641	778	807	843	868	860	879	879	871	871	856	847
Ryan Elementary School	740	544	560	561	587	585	578	570	603	637	670	709	734
Union Park Elementary School	740	727	962	649	801	849	885	900	961	1,027	1,092	1,131	1,168
Schultz Elementary School	740	567	642	669	684	703	725	744	737	739	746	737	740
Ann Windle School For Young Child	740	252	307	344	358	374	388	404	420	431	436	447	457
Gonzalez School For Young Child	740	248	270	333	347	363	377	393	409	420	425	436	446
<b>ELEMENTARY TOTALS</b>	<b>19,980</b>	<b>13,870</b>	<b>15,086</b>	<b>15,929</b>	<b>16,885</b>	<b>17,699</b>	<b>18,595</b>	<b>19,402</b>	<b>19,875</b>	<b>20,333</b>	<b>20,810</b>	<b>21,304</b>	<b>21,733</b>
Elementary Absolute Change		-631	1,216	843	956	815	895	807	473	458	477	493	429
Elementary Percent Change		-4.35%	8.77%	5.59%	6.00%	4.82%	5.06%	4.34%	2.44%	2.30%	2.35%	2.37%	2.01%

Yellow box = exceeds Max capacity





# Ten Year Forecast by Secondary

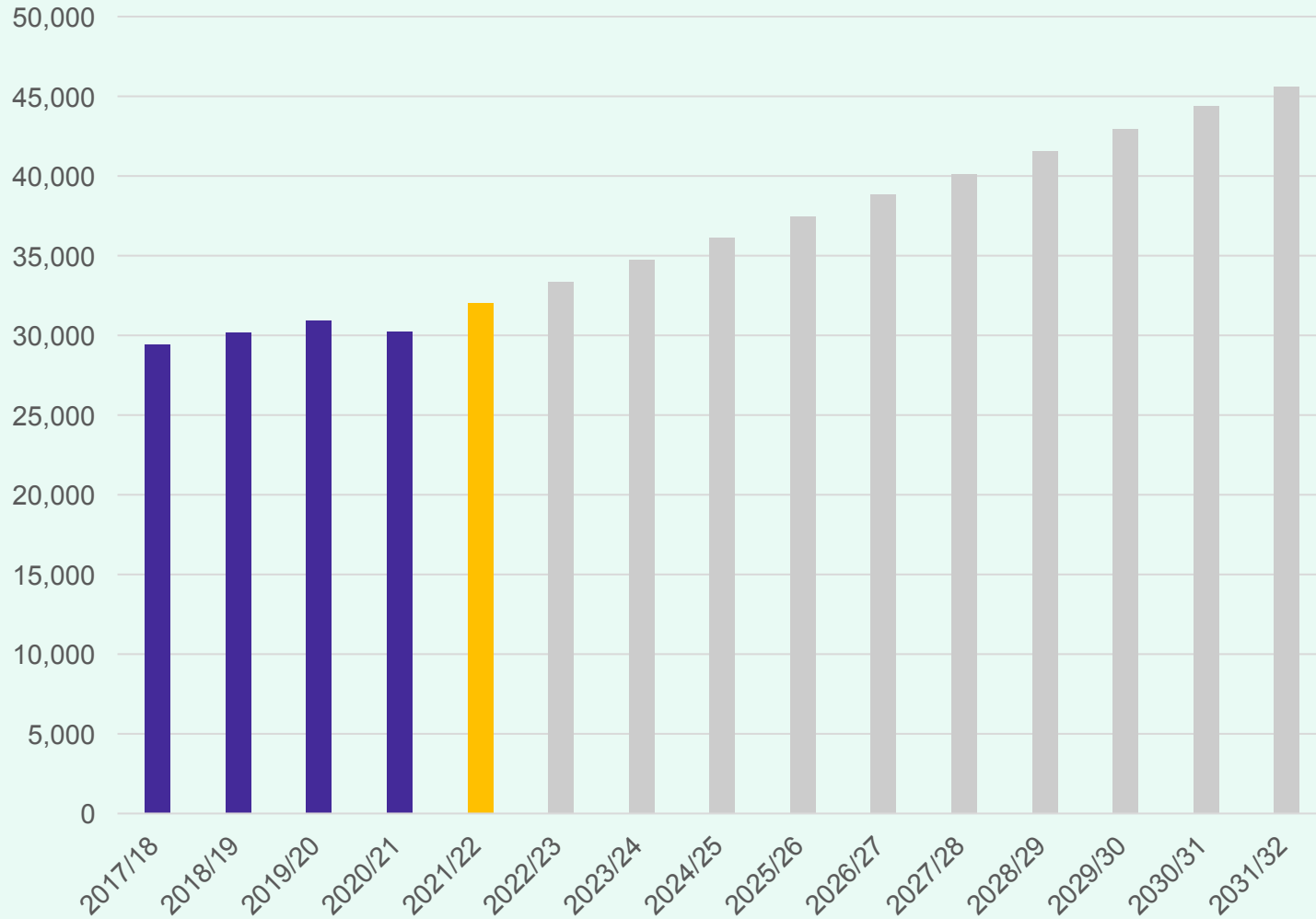
Campus Name	HISTORY		Fall	ENROLLMENT PROJECTIONS									
	Capacity	2020/21	2021/22	2022/23	2023/24	2024/25	2025/26	2026/27	2027/28	2028/29	2029/30	2030/31	2030/32
Calhoun Middle School	1,268	664	700	712	701	768	772	818	859	958	1,016	1,043	1,078
McMath Middle School	1,181	804	812	795	790	812	810	880	924	1,036	1,094	1,171	1,232
Navo Middle School	1,181	1,025	1,063	1,124	1,191	1,301	1,363	1,478	1,514	1,544	1,553	1,573	1,592
Crownover Middle School	1,181	874	813	820	732	771	755	777	745	739	782	793	804
Strickland Middle School	1,334	901	975	992	1,012	1,025	1,051	1,101	1,191	1,269	1,336	1,361	1,388
Harpool Middle School	1,181	875	867	818	798	769	795	781	820	813	853	844	851
Rodriguez Middle School	1,323	961	988	1,070	1,186	1,352	1,500	1,661	1,796	1,904	1,990	2,049	2,083
Bette Myers Middle School	1,323	880	834	822	822	883	924	946	1,006	1,091	1,149	1,133	1,135
<b>MIDDLE SCHOOL TOTALS</b>	<b>9,972</b>	<b>6,984</b>	<b>7,052</b>	<b>7,153</b>	<b>7,232</b>	<b>7,681</b>	<b>7,970</b>	<b>8,442</b>	<b>8,855</b>	<b>9,354</b>	<b>9,773</b>	<b>9,967</b>	<b>10,163</b>
Middle School Absolute Change		-139	68	101	79	449	289	472	413	499	419	194	196
Middle School Percent Change		-1.95%	0.97%	1.43%	1.10%	6.21%	3.76%	5.92%	4.89%	5.64%	4.48%	1.99%	1.97%
Braswell High School	3,350	2,446	2,728	3,020	3,173	3,351	3,523	3,701	4,029	4,433	4,736	5,043	5,300
Denton High School	2,460	2,023	1,924	1,996	2,046	2,069	2,113	2,116	2,176	2,180	2,295	2,458	2,600
Fred Moore High School		68	56	56	56	56	56	56	56	56	56	56	56
John Guyer High School	3,200	2,621	2,626	2,597	2,617	2,521	2,478	2,376	2,317	2,345	2,292	2,382	2,397
Ryan High School	2,340	2,197	2,226	2,286	2,364	2,370	2,360	2,380	2,443	2,491	2,580	2,782	2,926
The LaGrone Academy		0	202	237	237	0	0	0	0	0	0	0	0
<b>HIGH SCHOOL TOTALS</b>	<b>11,350</b>	<b>9,355</b>	<b>9,762</b>	<b>10,192</b>	<b>10,493</b>	<b>10,367</b>	<b>10,530</b>	<b>10,629</b>	<b>11,021</b>	<b>11,505</b>	<b>11,959</b>	<b>12,721</b>	<b>13,279</b>
High School Absolute Change		185	407	430	301	-126	163	99	392	484	454	762	558
High School Percent Change		2.02%	4.35%	4.41%	2.95%	-1.20%	1.57%	0.94%	3.69%	4.39%	3.95%	6.37%	4.39%
Denton J J A E P		8	4	4	4	4	4	4	4	4	4	4	4
Juvenile Detention CTR		43	50	50	50	50	50	50	50	50	50	50	50
Lester Davis School		7	52	52	52	52	52	52	52	52	52	52	52
<b>ALTERNATIVE SCHOOL TOTALS</b>		<b>58</b>	<b>106</b>	<b>106</b>	<b>106</b>	<b>106</b>	<b>106</b>	<b>106</b>	<b>106</b>	<b>106</b>	<b>106</b>	<b>106</b>	<b>106</b>
<b>DISTRICT TOTALS</b>	<b>41,302</b>	<b>30,267</b>	<b>32,006</b>	<b>33,380</b>	<b>34,716</b>	<b>35,853</b>	<b>37,201</b>	<b>38,579</b>	<b>39,857</b>	<b>41,298</b>	<b>42,648</b>	<b>44,098</b>	<b>45,281</b>
District Absolute Change		-641	1,739	1,374	1,336	1,137	1,347	1,378	1,278	1,441	1,350	1,449	1,183
District Percent Change		-2.1%	5.7%	4.3%	4.0%	3.3%	3.8%	3.7%	3.3%	3.6%	3.3%	3.4%	2.7%

Yellow box = exceeds Max capacity



# Key Takeaways

### Enrollment Projections



- 2021/22 DISD enrollment is up 3,323 students from 2020/21, an increase of 11.6%
- Denton ISD had nearly 7,750 total home sales in 2021, an 4.2% increase from 2020 totals
- New home sales in 2021 account for roughly 35% of the total district home sales
- The district has 65 actively building subdivisions and 48 future subdivisions
- Groundwork is underway on roughly 4,750 lots within 29 subdivisions
- DISD may enroll over 38,800 students by 2026/27 and approx. 45,600 students by 2031/32