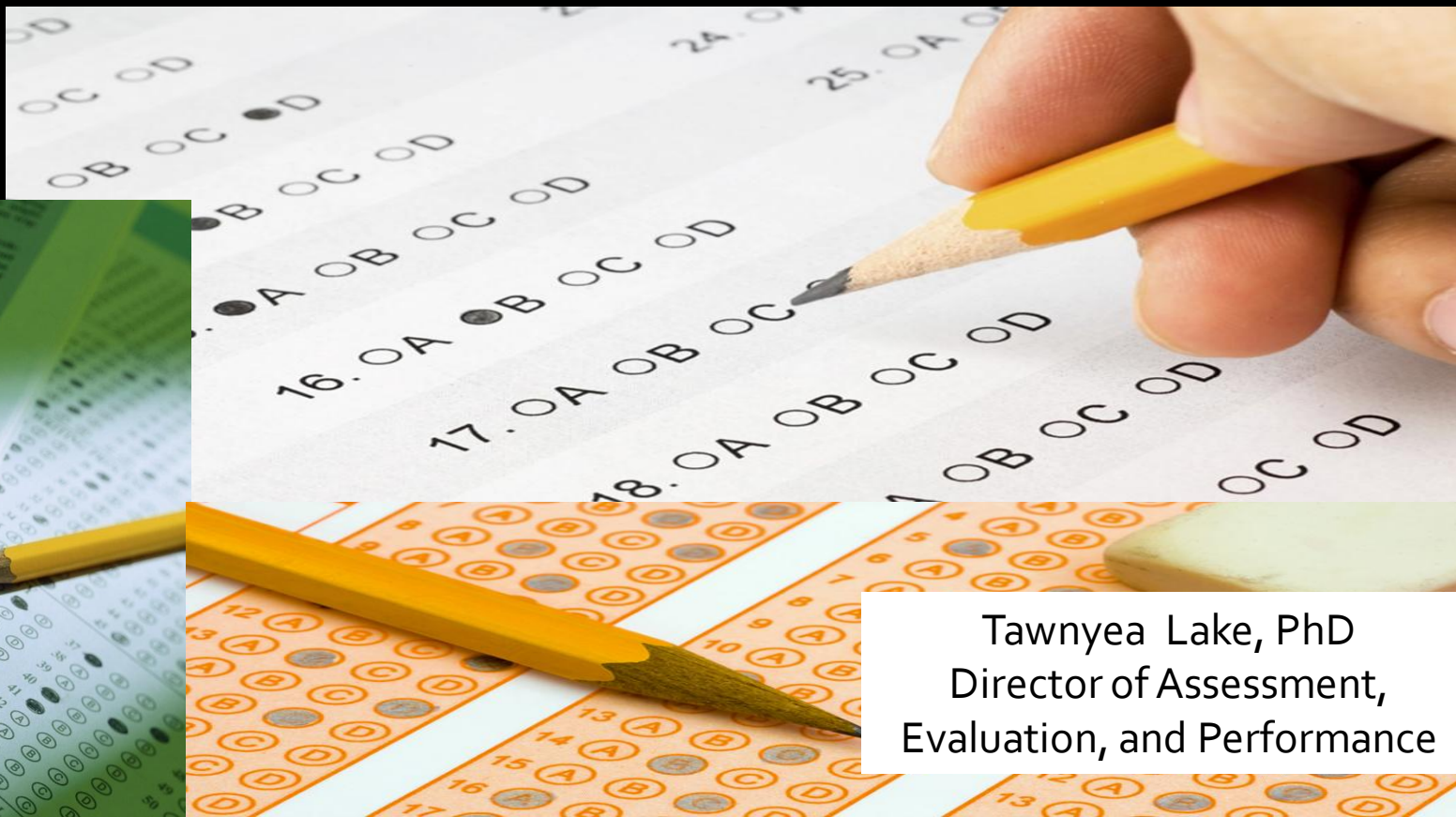


ACT Summary Report Graduating Class of 2011



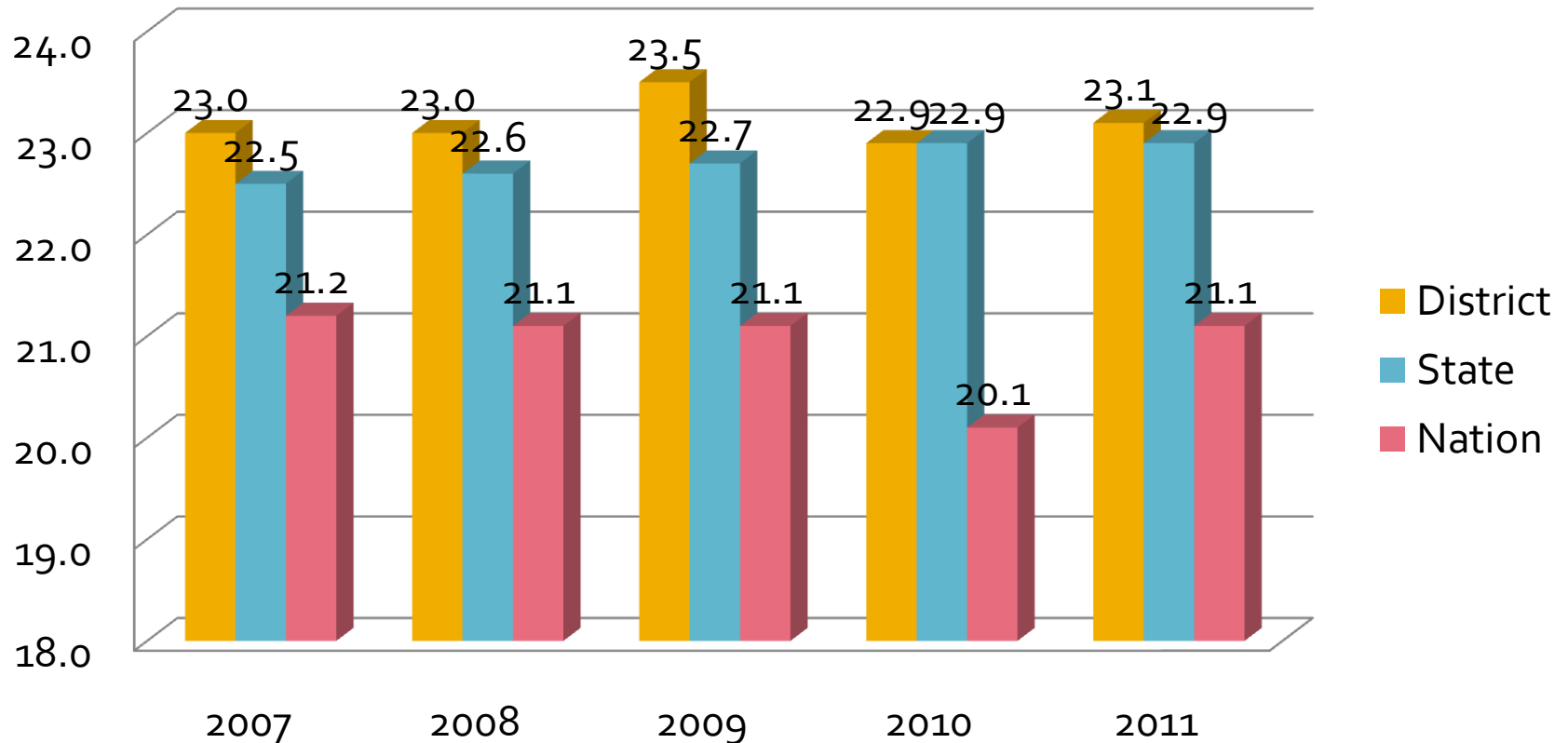
Tawnyea Lake, PhD
Director of Assessment,
Evaluation, and Performance

ACT Basics

- Curriculum-based measure that provides a readiness indicator for college-level work
- Tests achievement in 4 areas:
 - English College English
 - Math College Algebra
 - Reading College Social Science
 - Science College Biology

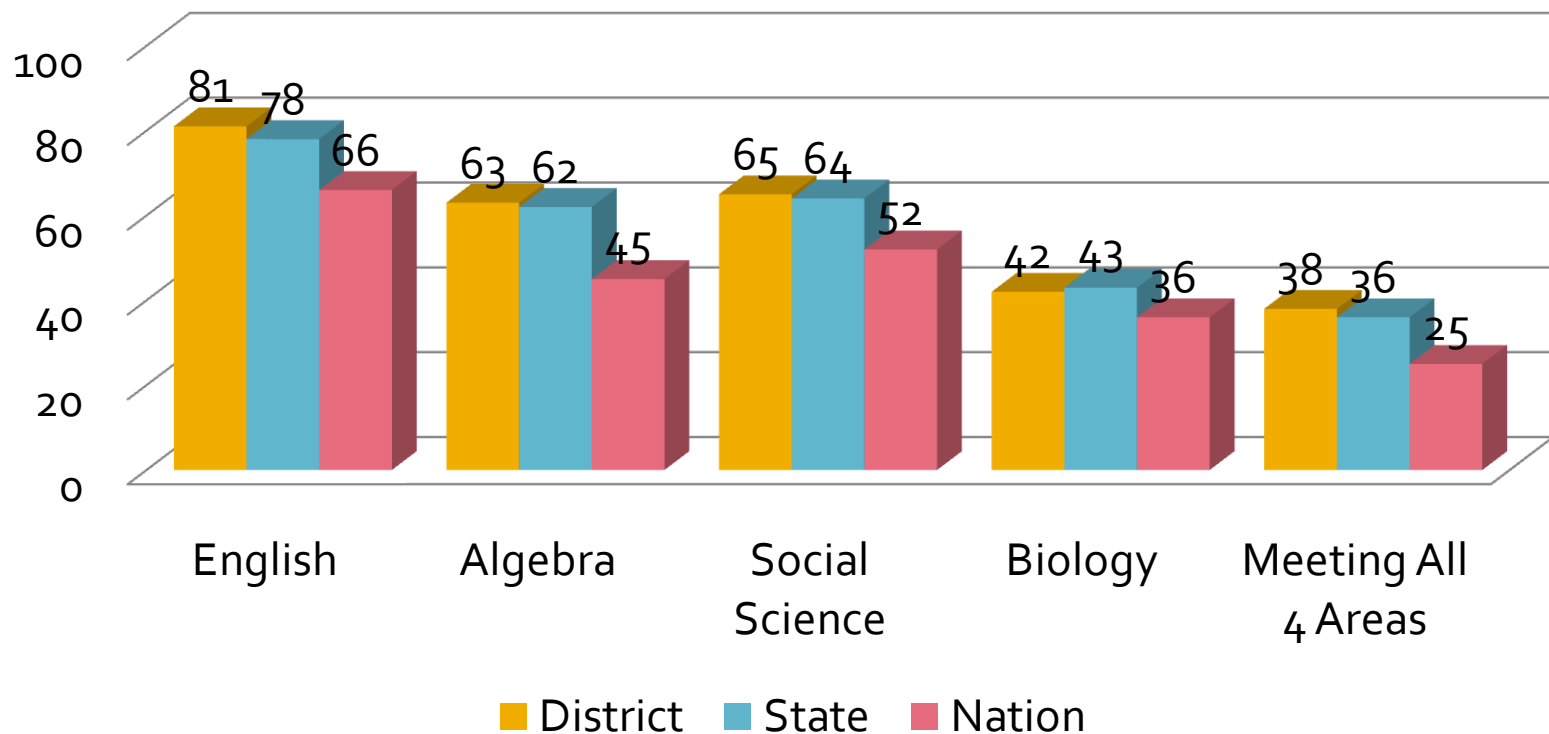
ACT Results

Composite Scores Over Time



ACT Results

Percent of Students Ready
for College-Level Coursework



ACT Themes

- Duluth students were above the state and well-above the nation in percent of students meeting college readiness benchmarks in:
 - English Composition
 - College Algebra
 - Social Science
 - All four areas
- Duluth students were well-above the nation and slightly below the state the college readiness benchmark in:
 - College Biology (Science test)

ACT Themes

- Percentage of students taking the ACT has increased from 2010 to 2011 (2010= 63%; 2011= 66%)
 - State: 72%
 - Nation: 49%

ACT Themes

- Students who take more advanced courses “Core or More” have substantially higher ACT composite scores
 - Core or More = 4 or more years of English and 3 or more years each of math, social studies, natural science
- Percent of our students who took reported taking courses that would be considered “Core or More” by subject
 - English: 82%
 - Reading: 66%
 - Math: 64%
 - Science: 46%

ACT Themes

- Students who take more advanced math courses (in addition to Algebra 1, Algebra 2, Geometry) substantially increase their ACT math score
 - Of the Duluth students taking 3 or more years of math beyond Algebra I, Algebra II, and Geometry (Trigonometry and Calculus, for example), 89% were considered college ready
 - Of the Duluth students who reported taking fewer than 3 math courses, 9% were considered college ready

ACT Themes

- To increase college readiness, ACT recommends the following:
 - Increase access for students to take the ACT
 - Make core or more a curriculum focus
 - Make sure the students are taking the right kind of courses early
 - Evaluate the rigor of courses

Questions?

Tawnyea L. Lake, PhD
Director of Assessment, Evaluation,
and Performance

tawnyea.bolme-lake@duluth.k12.mn.us

(218) 336-8700 ext. 1027