



ANNUAL REPORT | 2014-15

MAHTOMEDI PUBLIC SCHOOLS #832

MISSION STATEMENT | Northeast Metro 916 Intermediate School District responds to the unique needs of students, educators, and school districts with innovation, quality, and trusted experience.

To learn more about the information in this annual report, please visit www.nemetro.k12.mn.us.



NORTHEAST METRO
Intermediate School District

| 916

partners in education

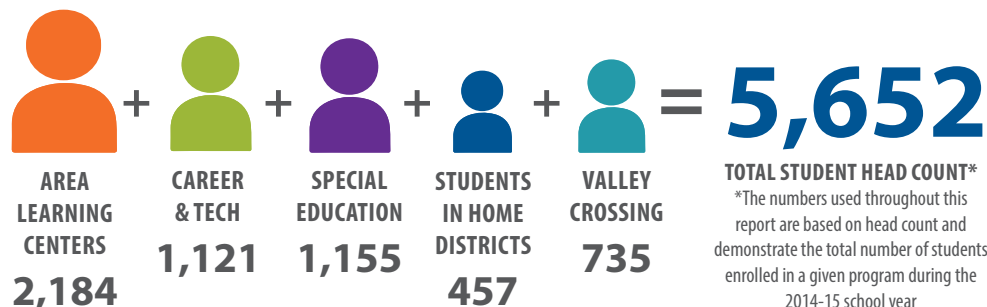
DISTRICT OVERVIEW

MEMBER DISTRICTS SCHOOL BOARD MEMBERS

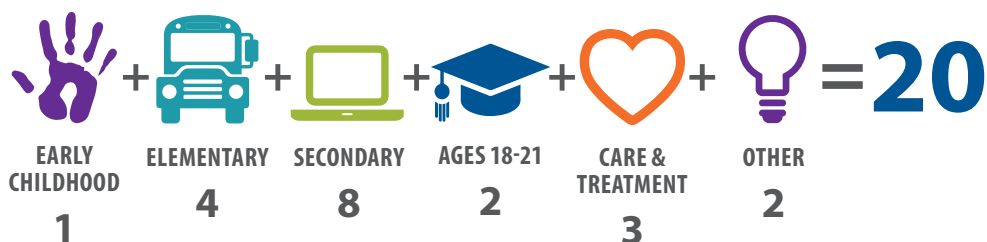
DISTRICT PROFILE

Northeast Metro 916 is one of three intermediate school districts in Minnesota, offering specialized and shared programming that includes career and technical education, special education services, area learning centers and elementary education. Through the sharing of resources, talent and ideas, Northeast Metro 916 provides cost-effective, expert and reliable services to 12 member school districts and the students and families we collectively support.

STUDENTS



PROGRAMS



STAFF



89%

OF STAFF PROVIDE DIRECT STUDENT SUPPORT

Northeast Metro 916 employs a high staff to student ratio in some programs, with a large number of teachers and education assistants, as well as other licensed positions such as social workers, licensed school nurses, and more.

Centennial #12

Karen Lodico

Columbia Heights #13

Laura Palmer

Forest Lake #831

Gail Theisen

Fridley #14

Marcia Lindblad

Mahtomedi #832

Judy Schwartz

Mounds View #621

Marre Jo Sager

North St. Paul - Maplewood - Oakdale #622

Theresa Auge'

Roseville #623

Lisa Edstrom

South Washington County #833

Tracy Brunnette

Spring Lake Park #16

Marilynn Forsberg

Stillwater #834

Mike Ptacek

White Bear Lake #624

Janet Newberg

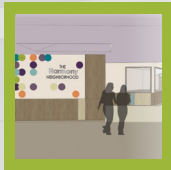
FACILITIES

Northeast Metro 916 conducted extensive facilities studies and planning from 2006 through 2011. A steering committee was brought together with stakeholders from member districts who developed the 3-Step Facilities Plan. The plan was approved by the School Board in June 2012. This is the first major district-wide facilities overhaul since the late 80s when special education additions were constructed at member district schools.

THREE-STEP FACILITIES PLAN:



New K-8 consolidated special education facility in the Northwest
Karner Blue Education Center opened fall 2014
(Blaine)



New K-8 consolidated special education facility in the Southeast
Pankalo Education Center planned to open fall 2017
(Lake Elmo)



Rebuild Capitol View secondary education facility
New building planned to open fall 2018
(Little Canada)

2014-15 HIGHLIGHT: Karner Blue Education Center opens

Karner Blue is the first school of its kind to create an innovative educational environment designed specifically to support the unique learning that supports and encourages learning for students with highly complex disabilities. Drawing inspiration from the surrounding natural environment, as well as employing design strategies from hospitals and mental health facilities, the school is called a "healing learning environment." The floor plan departs from traditional school design to create four unique learning communities with more open space and daylight that accommodates different learning styles and encourages exploration. The staff welcomed their inaugural class of 90 students in September 2014 and have continued to enroll additional students as referral requests are made / [READ MORE](#)

FINANCE

Intermediate districts operate on a fee-for-service basis. Revenue to fund student services is generated by tuition billing. The majority of the district expenditures consists of salaries and benefits with budgets in specialized programs consisting of over 90% staffing costs.

| | |
|---------------------------|------------|
| TUITION..... | 36,205,830 |
| NON MEMBER ACCESS FEE ... | 663,662 |
| MEMBERSHIP FEE..... | 2,119,981 |
| LEVIES | 2,070,919 |
| THIRD PARTY BILLING..... | 637,070 |
| GRANTS..... | 846,139 |
| CONTRACTED SERVICES..... | 5,484,677 |
| DEBT SERVICE..... | 1,353,387 |
| OTHER | 1,550,576 |
| VALLEY CROSSING | 7,764,672 |

**\$58.7 MILLION
TOTAL REVENUE**

| | |
|--------------------------|------------|
| SALARY | 26,035,431 |
| BENEFITS..... | 11,364,697 |
| PURCHASED SERVICES | 8,433,483 |
| SUPPLIES..... | 1,225,248 |
| CAPITAL OUTLAY..... | 4,072,864 |
| OTHER | 98,403 |
| VALLEY CROSSING | 7,786,961 |

**\$59 MILLION
EXPENDITURES**

EDUCATIONAL PROGRAMS



AREA LEARNING CENTERS

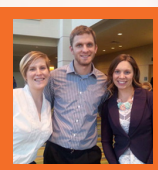
Area Learning Centers (ALCs) help students achieve their educational and career goals in a non-traditional learning environment. The three locations offer comprehensive and rigorous high school curriculum delivered within a personalized, flexible and nurturing environment. Students receive assistance in meeting graduation requirements, and have opportunities to gain vocational skills and work experience.

2014-15 SCHOOL YEAR HIGHLIGHTS:



Summer school credits reach record high

Students attending summer school at East View Academy, Metro Heights Academy and a satellite location in Columbia Heights earned a total of 518.6 credits.

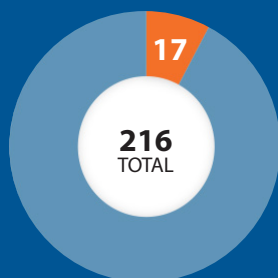


Teachers invited to attend Teach to Lead Summit- Denver

916 Mahtomedi Academy teachers had the opportunity to work side-by-side with national leaders in education to help develop innovative ideas / [READ MORE](#)

ALC ENROLLMENT

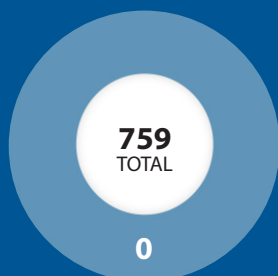
Students in grades 9 to 12+ attending full time, part-time and for specific credit recovery



916 Mahtomedi Academy
(Mahtomedi)



East View Academy
(Little Canada)



Metro Heights Academy
(Fridley)

TOTAL STUDENTS = 2,184

Free & Reduced Lunch = 48%

Students of Color = 57%

Mahtomedi Cumulative

VALLEY CROSSING COMMUNITY SCHOOL

Valley Crossing Community School (VCCS) is a unique, child-centered place-based on the best practices in curriculum, organization, and architecture. In planning the school, visionary parents collaborated with teachers, superintendents, school boards, and other educational and community leaders to implement best practices from the most effective schools.

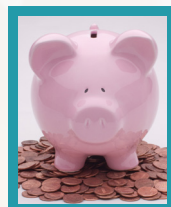
Note: In January 2015, District #833 announced the purchase of Valley Crossing and will assume management in July 2016.

2014-15 SCHOOL YEAR HIGHLIGHTS:



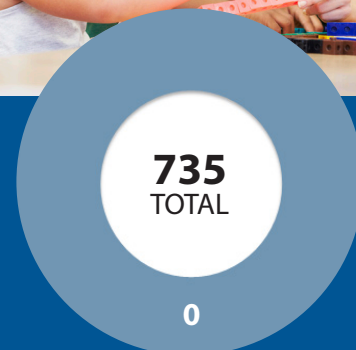
VCCS ranks among top Title I Schools

For the fourth year in a row, VCCS has been named a Reward School, a designation given the top performing 15 percent of Title 1 schools / [READ MORE](#)



Focus on Financial Literacy

4th-6th graders brought their financial and business learning to life through a simulation experience called BizTown / [READ MORE](#)



VCCS ENROLLMENT
(Woodbury)

Students in grades K-6 enroll in Valley Crossing from North St. Paul-Maplewood-Oakdale #622, South Washington County #833 and Stillwater Area Schools #834. Families can also open enroll in Valley Crossing through District #833.

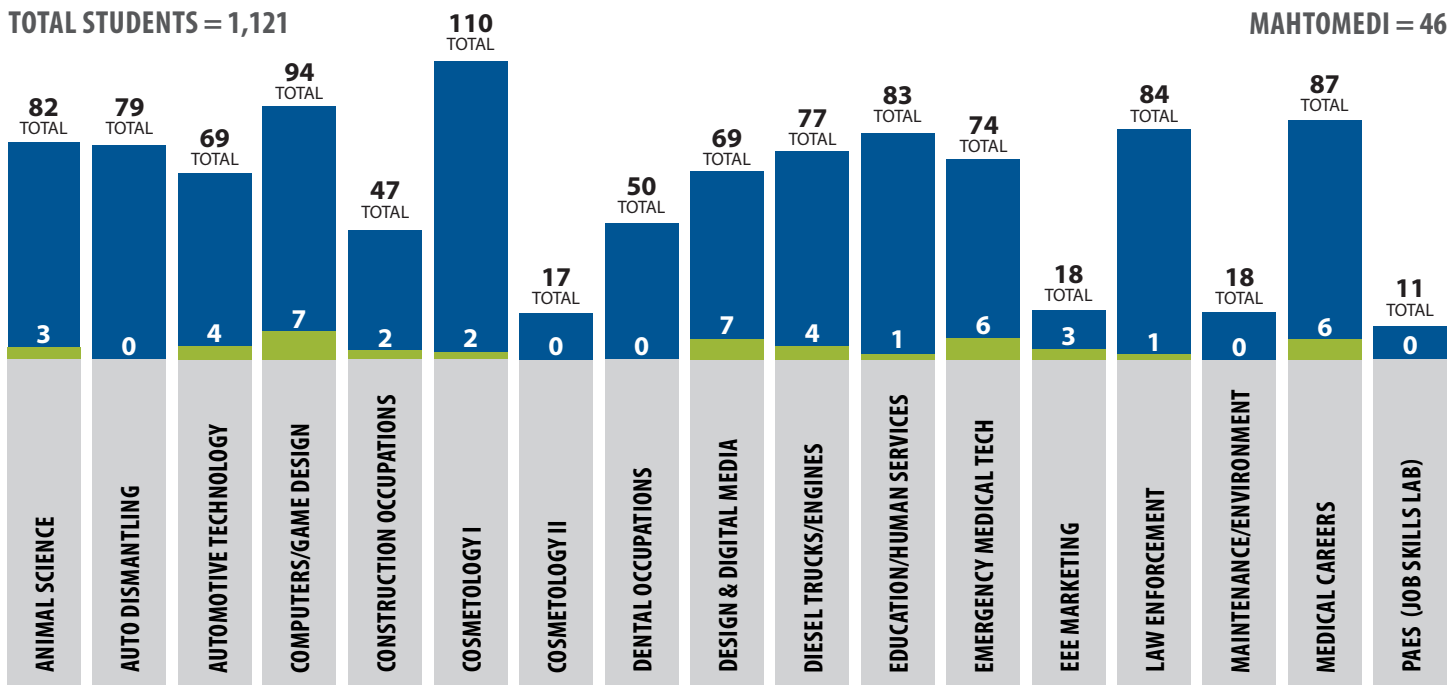
Free & Reduced Lunch = 11%

Students of Color = 30%

Mahtomedi Cumulative

CTC ENROLLMENT

TOTAL STUDENTS = 1,121



CAREER & TECHNICAL CENTER

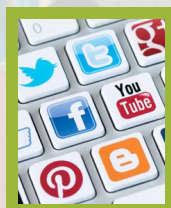
Located on the East Campus of Century College (Mahtomedi), the Career and Technical Center (CTC) provides unique and meaningful hands-on learning opportunities that allow students in grades 11-12 from participating schools to explore a passion while earning high school and college credit in a college setting. Students attend one 2-hour block during the school day.

2014-15 SCHOOL YEAR HIGHLIGHTS:



CTC earns top ranks at national HOSA Competition

The CTC Emergency Medical Technician teams took both first and second place at the national HOSA competition, an organization for future health professionals that develops leadership and technical competencies.



Entertainment, E-Marketing, Event Planning Course Premieres

In Fall 2014, CTC introduced a new class which the students affectionately refer to as "EEE Marketing" for short. The new class provides hands-on business learning experiences / [READ MORE](#)

COLLEGE CREDIT

Students participating in CTC courses earn college credit through articulation agreements with over 15 post-secondary institutions across the state. Additionally, many CTC programs align directly with Century College courses and provide dual credit options for students to earn both high school and Century College credits.

Century College
Credits Earned
55

Articulated
College Credits
251

CONCURRENT ENROLLMENT & SATELLITE PROGRAMS

In addition to CTC program offerings, students have the opportunity to participate in concurrent enrollment (CC) courses at Century College or satellite programs (SP) offered at member district high school locations. Concurrent enrollment courses are taught by Century College instructors with high school and college students in the same classroom. Participating students earn college credit through Century College.

COURSES (# Students)

| | | |
|----|--|---|
| SP | American Sign Language I & II (District #624)..... | 6 |
| SP | American Sign Language II (District #621)..... | 0 |
| SP | Aviation and Aerospace (District #624)..... | 0 |
| CC | Heating & Air Conditioning..... | 0 |
| CC | Info & Telecommunications Technology..... | 0 |
| SP | Junior ROTC Aerospace (#833)..... | 0 |
| SP | Mentor Connection..... | 7 |
| CC | Prosthetics..... | 0 |
| CC | Visual Communications..... | 0 |

Mahtomedi.....13

Cumulative Total.....50

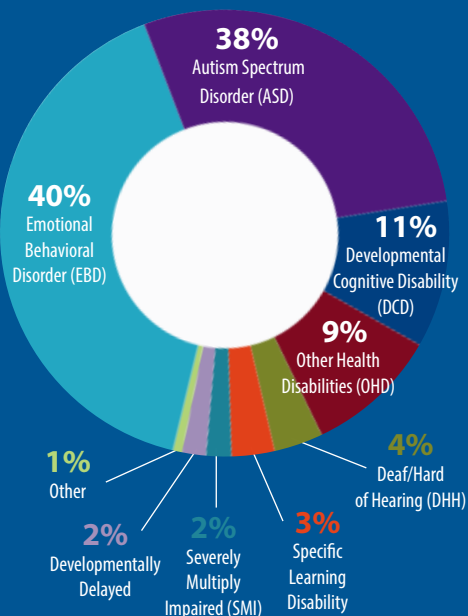


SPECIAL EDUCATION

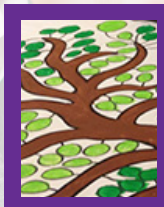
Special Education programs and services at Northeast Metro 916 are highly specialized to respond to our member districts' students with the most challenging needs. Highly-structured, supportive learning environments address students' academic, social, emotional, behavior and communication needs.

STUDENT PROFILE

Special Education site-based programs
(excludes care and treatment)



2014-15 SCHOOL YEAR HIGHLIGHTS:



Artist-in-Residency Program

Several special education programs had the opportunity to have an artist-in-residency, where artists focused on a theme that was integrated throughout the program / [READ MORE](#)



Capitol View premieres stage adaptation of *Clue*

Students at the Capitol View ALP and CAP programs wrote, acted and directed in an original bold and witty stage remake of *Clue*, captivating the audience with humor and mystery.

ENROLLMENT

Enrollment in Northeast Metro 916 special education site-based programs are on a referral basis only, with students being referred by their home districts.

Northeast Metro 916 contracts with care and treatment facilities to provide education services.

TOTAL STUDENTS = 1,555

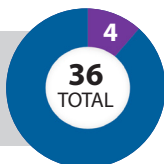
Free & Reduced Lunch = 48%

Students of Color = 32%

Mahtomedi Cumulative

AUDITORY/ORAL PROGRAM

Specialized services for ages birth to K with hearing loss (Stillwater)



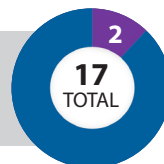
ALP CAPITOL VIEW

Serving students grades 6-12 with behavioral needs (Little Canada)



ALP JOHN GLENN

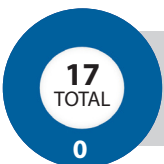
Serving students grades K-5 with ASD and EBD (Maplewood)



17 TOTAL

ALP VALLEY CROSSING

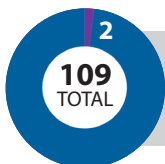
Serving students grades K-5 with behavioral needs (Woodbury)



109 TOTAL

ARIS

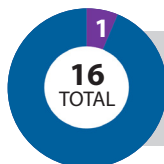
Care and treatment education services for K-12 (Woodbury)



16 TOTAL

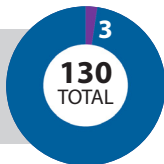
ASSESSMENT CENTER

Comprehensive educational and behavioral evaluation (Little Canada)



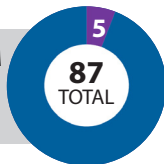
BELLAIRE EDUCATION CENTER

Serving students grades 6-12 with ASD and EBD (White Bear Lake)



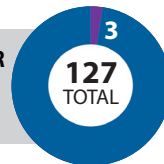
CREATIVE ALTERNATIVES PROGRAM

Serving grades 6-12 with neuro-biological disorders (Little Canada)



KARNER BLUE EDUCATION CENTER

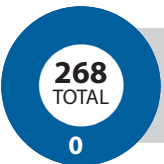
Serving students grades K-8 with ASD and EBD (Blaine)



268 TOTAL

LIFESPAN

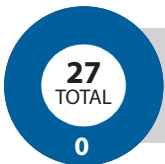
Care and treatment education services for K-12 (Shoreview)



27 TOTAL

PROJECT RETURN

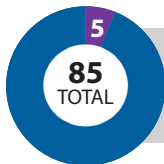
Short-term program for students facing suspension/expulsion (Little Canada)



85 TOTAL

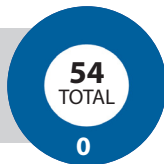
SOUTH CAMPUS

Serving students grades 6-12 with ASD and DCD (White Bear Lake)



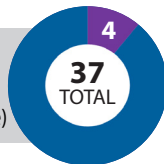
THE WILLOWS

Care and treatment education services for girls ages 12-18 (Blaine)



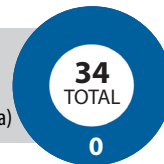
WELS-NORTH

Work experience program for ages 18-21 with ASD, EBD, DCD (White Bear Lake)



WELS-SOUTH

Work experience and life skills for ages 18-21 with DCD, ASD, SMI (Little Canada)



MAHTOMEDI = 29

SERVICES

PROFESSIONAL SERVICES

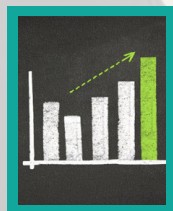
Northeast Metro 916 provides specialized professional and contracted services which develop from the collaboration with member districts. These services impact general education and special education programs as well as support the administrative and operational needs of partner districts. By sharing resources, districts are able to receive cost-effective, expert and reliable services which are also open to non-member participation when the capacity is available.

2014-15 HIGHLIGHTS:



EA Pathway to Licensure Program

23 education assistants from five participating districts are part of an accelerated cohort working to earn their master's degree and special education license in EBD / [READ MORE](#)



Academic Return on Investment

Northeast Metro 916 is facilitating an opportunity for districts to measure which programs drive student achievement and ultimately make better data-driven decisions / [READ MORE](#)

GRANTS & RESEARCH OFFICE

| | YES | NO |
|---|-----|----|
| 9 Ways for "Strategic" Teachers to Support Struggling Readers in Content Classrooms Grades 6-12 | | ● |
| Becoming a Reflective Teacher in a Highly Engaged Classroom | | ● |
| Becoming a Reflective Teacher in a Highly Engaged Classroom - Level 2 | | ● |
| GRO-O-GRAM Subscription | ● | |
| Math/Science Teacher Partnership | | ● |
| Neurodiversity in the Classroom - A Revolutionary New Concept for Special Education | | ● |
| Prioritizing Instruction - A Seminar Series for School Leaders in Non-General Education Settings | | ● |
| The Visible Learning Institute | ● | |

ADMINISTRATIVE SERVICES

| | YES | NO |
|----------------------------|-----|----|
| ALC Management | | ● |
| DMC Membership | ● | |
| DMC Studies | | ● |
| Document Imaging | | ● |
| EA Pathway to Licensure | | ● |
| Individual District Survey | | ● |
| Joint Purchasing | ● | |
| Legal Services | ● | |
| Programmer | | ● |
| Targeted Services | ● | |
| Transportation Services | ● | |

PROFESSIONAL NETWORKS



SPECIAL ED CONTRACTED SERVICES (FTE)

| | #832 | Total |
|--------------------------------------|-------------|--------------|
| Audiologist | 0.02 | 1.47 |
| Autism Specialist | 0.00 | 1.50 |
| Behavioral Specialist | 0.00 | 0.01 |
| Brailist | 0.00 | 1.23 |
| Blind/Visually Impaired Teacher | 0.56 | 5.94 |
| Captionist | 0.00 | 1.25 |
| Certified Occupational Therapy Asst. | 0.00 | 3.45 |
| Deaf/Hard of Hearing Teacher | 0.30 | 8.86 |
| Education Assistant | 0.00 | 0.05 |
| Health Specialist | 0.00 | 1.81 |
| Interpreter | 0.00 | 13.47 |
| Intervener | 0.00 | 7.58 |
| Licensed School Nurse | 0.00 | 1.00 |
| Orientation & Mobility Specialist | 0.06 | 1.36 |
| Occupational Therapist | 0.00 | 1.35 |
| Physical Health Disabilities Teacher | 0.05 | 3.79 |
| Programmer | 0.00 | 0.71 |
| Psychologist | 0.17 | 1.39 |
| Physical Therapist | 0.00 | 2.22 |
| Signing Education Assistant | 0.00 | 1.24 |
| Social Worker | 0.00 | 0.37 |
| Special Education Teacher | 0.00 | 0.05 |
| Speech Therapist | 0.00 | 2.34 |
| Total | 1.16 | 62.44 |

TRAINING & TECHNICAL ASSISTANCE

| | YES | NO |
|--------------------------------------|-----|----|
| Assistive Technology Library | ● | |
| Audiology | ● | |
| Behavioral Analyst Services | | ● |
| Behavior Tools | | ● |
| Nonviolent Crisis Prevention (CPI) | | ● |
| Professional Crisis Management (CPM) | | ● |

STUDENTS SERVED IN HOME DISTRICTS

| | #832 | Total |
|-------------------------|-----------|------------|
| Blind/Visually Impaired | 4 | 141 |
| Deaf/Hard of Hearing | 14 | 316 |
| Total | 18 | 457 |

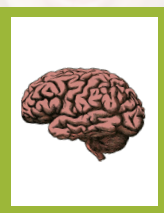
PARTNERSHIPS & COLLABORATION



COMMUNITY CONNECTIONS

Thanks to the generosity of community partners, students throughout the district are able to gain hands-on work and educational experiences and have access to invaluable resources that help them become better prepared for their future.

2015-16 HIGHLIGHTS:



University of Minnesota Psychiatric Fellows

Through a partnership with the University of Minnesota Psychiatric Department, two fifth-year Fellows provide consultation and training to mental health staff one day a week for a full year at four sites.



Goodwill Work Experience

Goodwill Maplewood works collaboratively with Northeast Metro 916 to provide job opportunities for students in transition programs to gain on-the-job skills and experience for future employment.



Urban Boat Builders

Special education students participate in Urban Boat Builders as a choice activity, working throughout the year to build artisan boats which they launch in May. In 2014-15, the students built two canoes and a kayak.

3M
Alexandra House Advocate
Allina Health
Argosy University
Art Inst. International MN
Aveda
Canvas Health
City of North St. Paul
Cottage Grove Police Dept.
Century College
Dakota County Technical College
District Management Council
Dunwoody College of Technology
Eagle Bluff Environmental Learning Center
Eagle Brook Church
Empire Beauty School
Feed My Starving Children
Festival Foods
Fridley Police Department
Good Samaritan
Goodwill
HealthEast
Houles
Inver Hills Community College
Intermediate District #287
Intermediate District #917
John's Auto Parts
Kraus-Anderson Construction
Nordic Rocks
Project Enhance
Ramsey County
Redeemer Lutheran Church
Regency Beauty Institute
Roseville Lutheran Church
Maplewood Care Center
Meals On Wheels
Minneapolis Business College
Minneapolis Community and Technical College

MN Auto Dealers and Independents
MN School of Cosmetology
Minnesota State Patrol
Oakdale Police Department
PCI Academy
Pratt Homes
Regency Beauty School
Ronald McDonald House
Saint Paul College
South Metro Fire
STEP-UP
St. Francis Animal and Bird Hospital
St. John's Hospital
Stillwater Chamber of Commerce
Smitty Big Tow and Recovery
Teacher-Child Interaction Training Universal
Teen Challenge
The Builders Group
Tree Trust
University of Minnesota
Urban Boat Builders
Value Village
Village Orthodontics
Washington County Sheriff's Department
White Bear Area Chamber of Commerce
White Bear Area Emergency Food Shelf
White Bear Lake Police & Fire Departments
White Bear Township Theater
Woodbury Health Care
Woodbury Police Department
Woodbury Public Safety
Youth Frontiers

916 EDUCATION FOUNDATION

The 916 Education Foundation is a charitable organization that enhances teaching and learning through economic support to the students, staff, programs and member districts of Northeast Metro 916. The foundation raises money to augment the resources of Northeast Metro 916 for students and staff through student scholarships and recognition, specialized equipment, program grants and staff recognition. The foundation has supported the district since 1984, and over the last five years has awarded over a half a million dollars in scholarships and grants for students and teachers.



Mahtomedi Student Scholarships.....\$4,750

Mahtomedi Student of the Month.....\$100

Total 2014-15 Giving Programs.....\$86,405