

**PIONEER ELEMENTARY
MONTHLY REPORT**

(January)

ENROLLMENT/ATTENDANCE: (As of 1/6/16)

CAMPUS/PROGRAM	PPCD	PRE-K	K	TOTAL
PIONEER	27	89	152	268
DAEP	0	0	0	0
ATTENDANCE %	X	94.47%	94.21%	94.34%

INNOVATIONS:

- 1. The implementation of an appropriate technology lab that will encourage creativity and application of skills has begun! A campus based committee is working to renovate the space that will house 10 technology based centers that support learning objectives.**
- 2. Kindergarten is researching the possibility of starting a “math lab” during the 2016-2017 school year that would allow more activity based learning.**

CAMPUS NEWS:

- 1. Middle of year testing will be administered in January campus wide.**

STUDENT HONORS:

- 1. 37 students received perfect attendance awards from the first semester!**
- 2. Each week we are honoring a student from each class as a Pioneer H.E.R.O. that has exemplified the character trait we have taught through PBIS / Character Education.**
- 3. We are rewarding good attendance with our campus “spinning wheel” where student have the opportunity to be recognized for school attendance.**

FIELD TRIPS:

- 1. No field trips scheduled in January.**

PROFESSIONAL DEVELOPMENT:

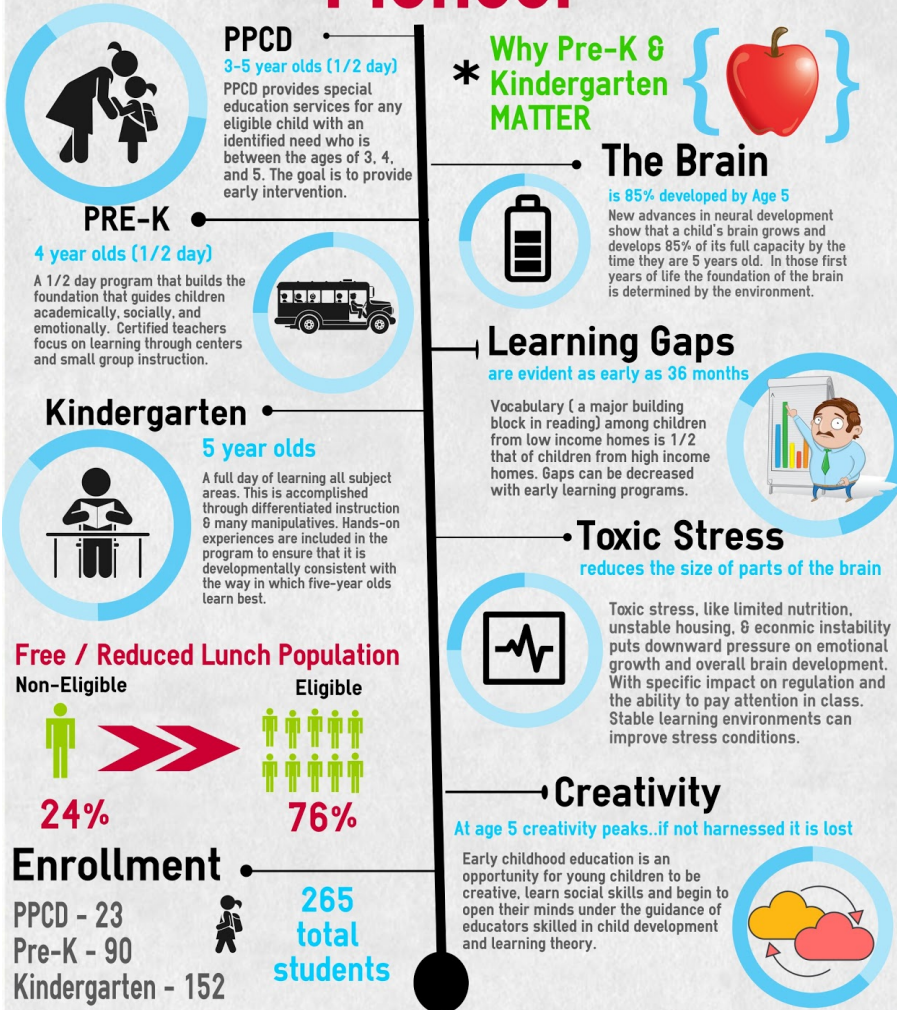
- All ESL and Bilingual staff and administration will continue a series of trainings hosted by Region 9 to improve our bilingual and esl program district wide.
- Mrs. Cox and the speech department will be hosting a full day training on January 18th that is specifically designed to support language development and acquisition in the pre-k classroom. This training is specifically intended to help us implement the speech RTI program in Pre-K.
- Kindergarten teachers will be attending project based learning training hosted by Connected Consulting on January 18th. Kindergarten teachers will be trained with the Crestview staff to provide vertical alignment between transition grades.

TEACHER/STAFF SPOTLIGHT:

- Pre-K staff, Mrs. Hazlett, Mrs. Coyac, and Mrs. Freeman as well as the support staff have begun to brainstorm ways we can provide more interventions and resources for our most vulnerable population. As we await more information from TEA regarding funding for a full-day of pre-k we are piloting programs that could be better suited to address the needs of these students within a full day setting. The infographic below was presented to You LEAD to show the needs of our campus and specifically focus on the students that are low SES and need our program the most.

Graham ISD

Pioneer



UPCOMING EVENTS:

- January 6th-13th Kindergarten TPRI Testing Window
- January 10th -22nd Pre-K CPALLS Testing Window

OTHER:

1. We are evaluating a larger than usual enrollment within the PPCD class. In order to best serve our students we have had to realign staff, open a new section of PPCD, and temporarily hire additional support in the form of a substitute to serve our current numbers. We are currently waiting on up

to 9 more students that will very likely qualify for this program by the end of January. We will have to look at additional support once the specific needs our identified within our 3 year old population that require significant care.