

# Illinois Report Card, 2024-2025

## Student Assessment Report

East Aurora School District 131  
November 17, 2025

---

Dr. Ami Engel  
Associate Superintendent for Curriculum, Instruction, and Assessment



**EAST AURORA**  
SCHOOL DISTRICT 131

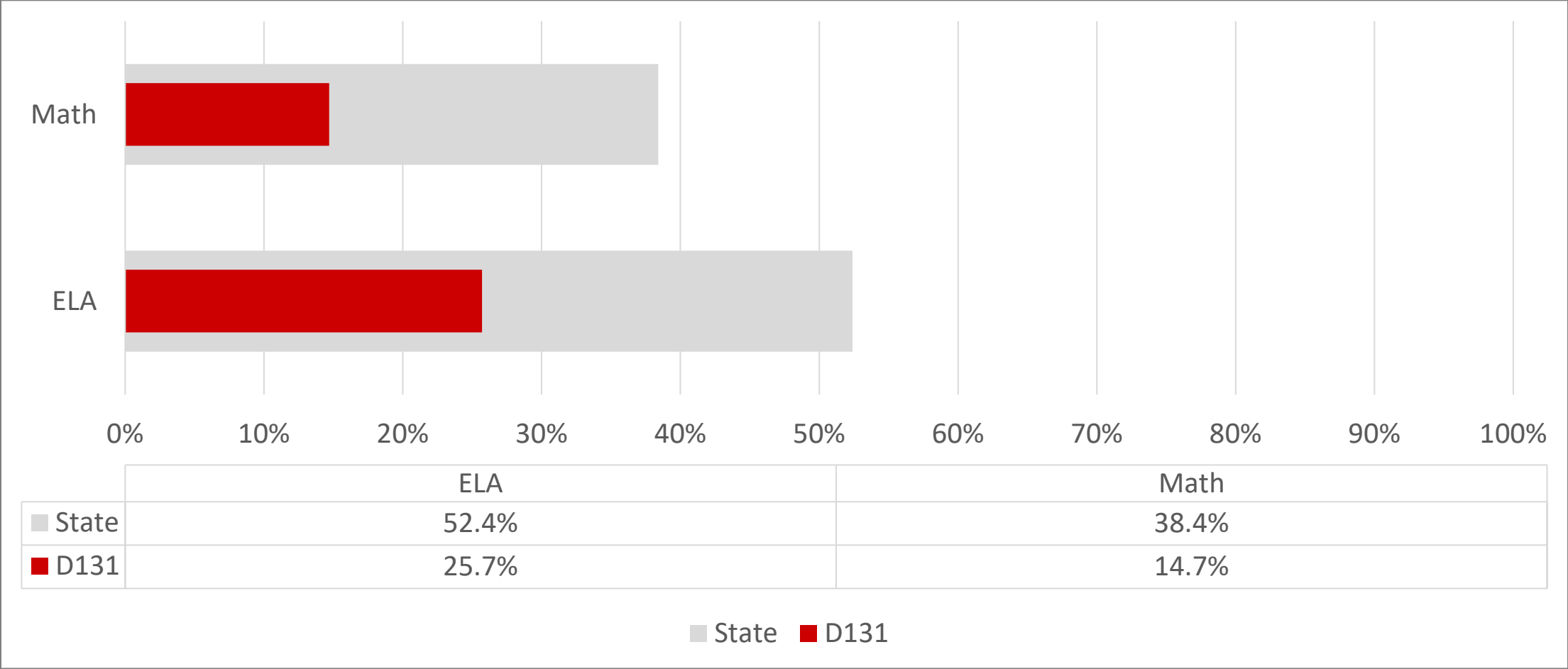
# Overall District Proficiency

---

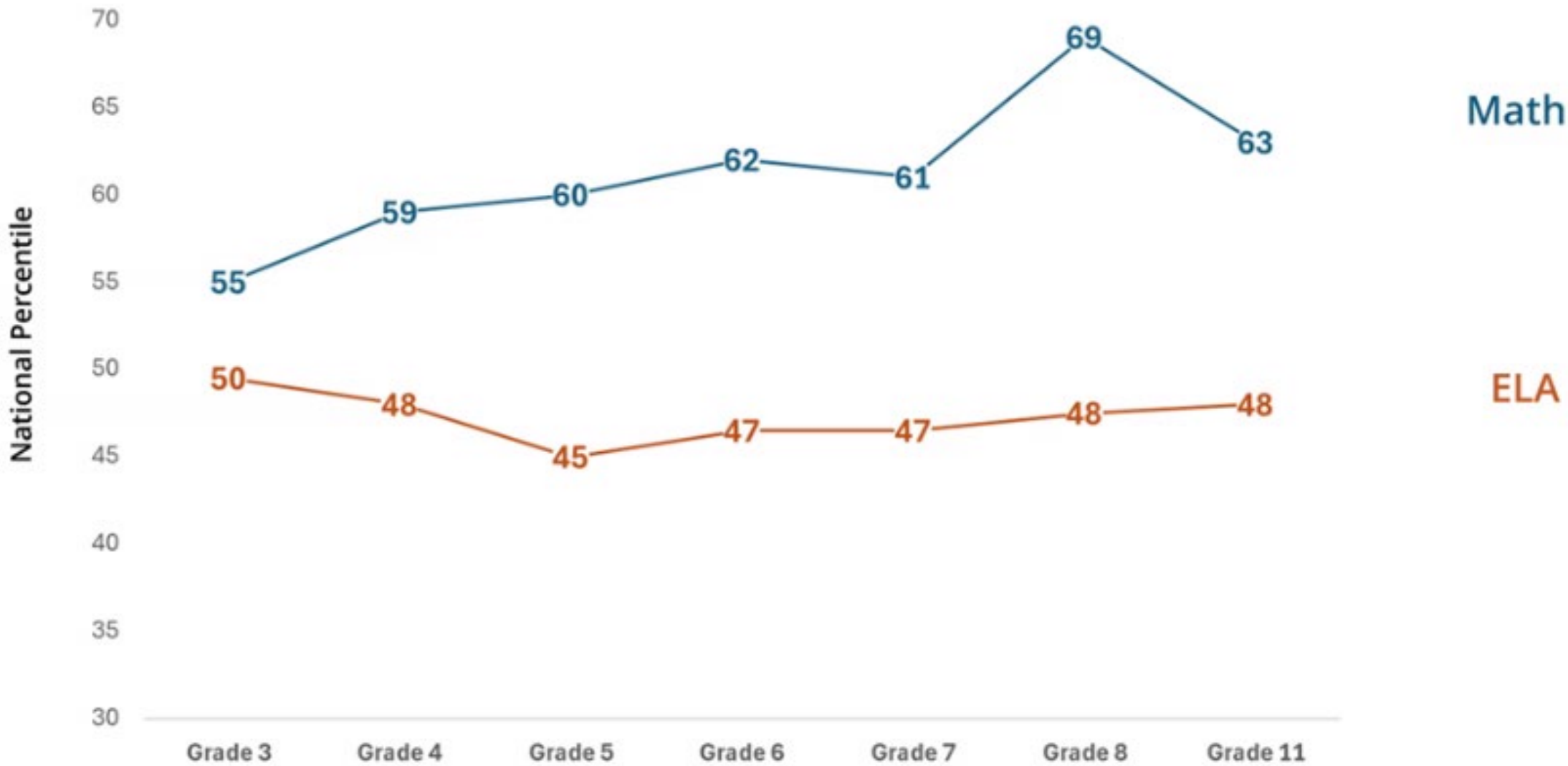
# District Grades 3-11

## Percent of Students Proficient and Above

IAR, ACT & DLM



# National Percentiles Corresponding to New Illinois Proficiency Benchmarks

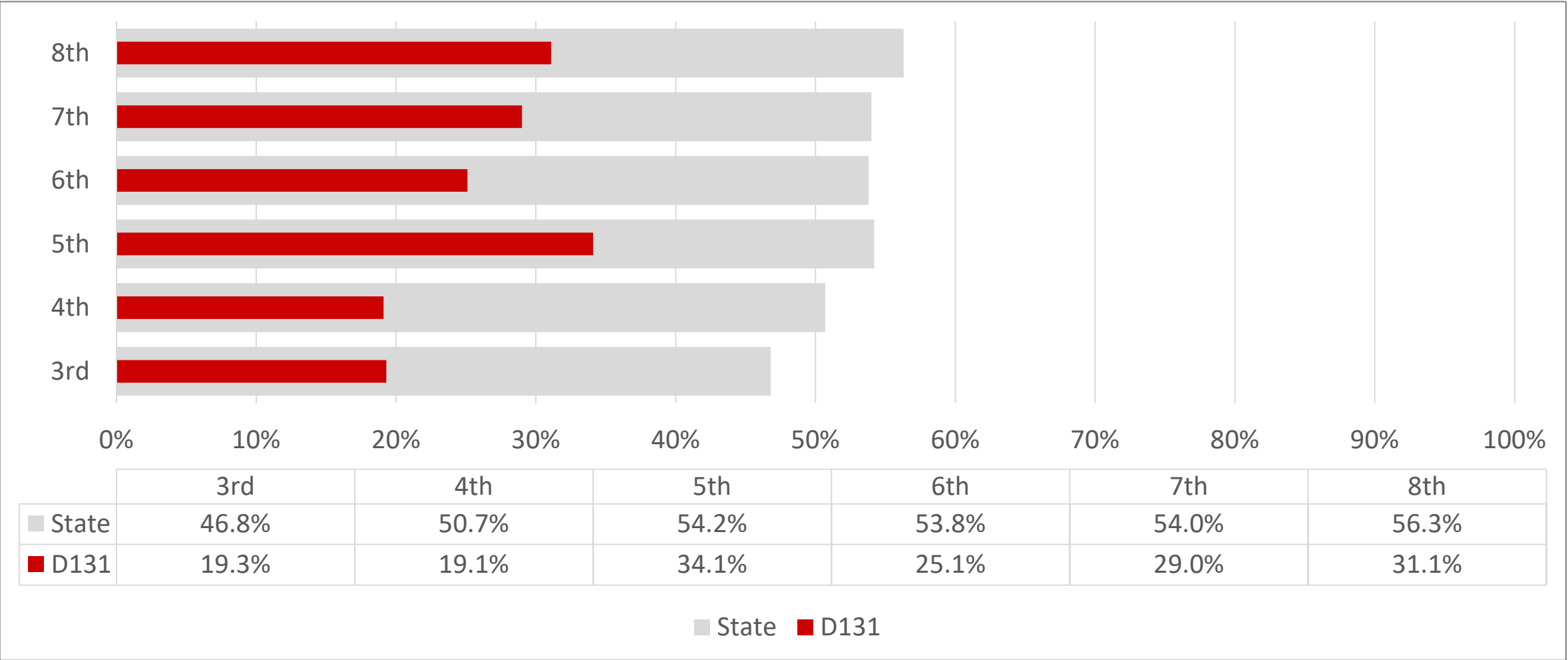


# Literacy

---

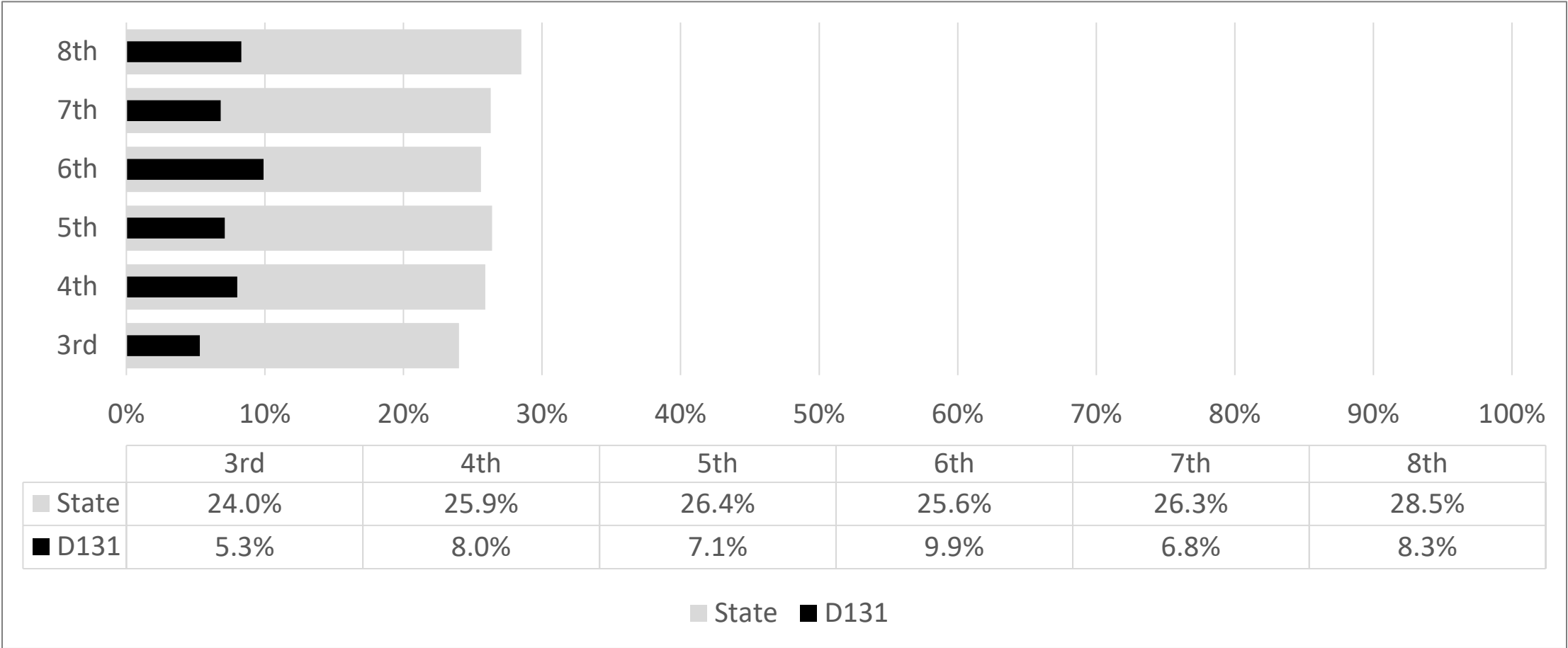
# Percent of Students Proficient and Above

IAR & DLM



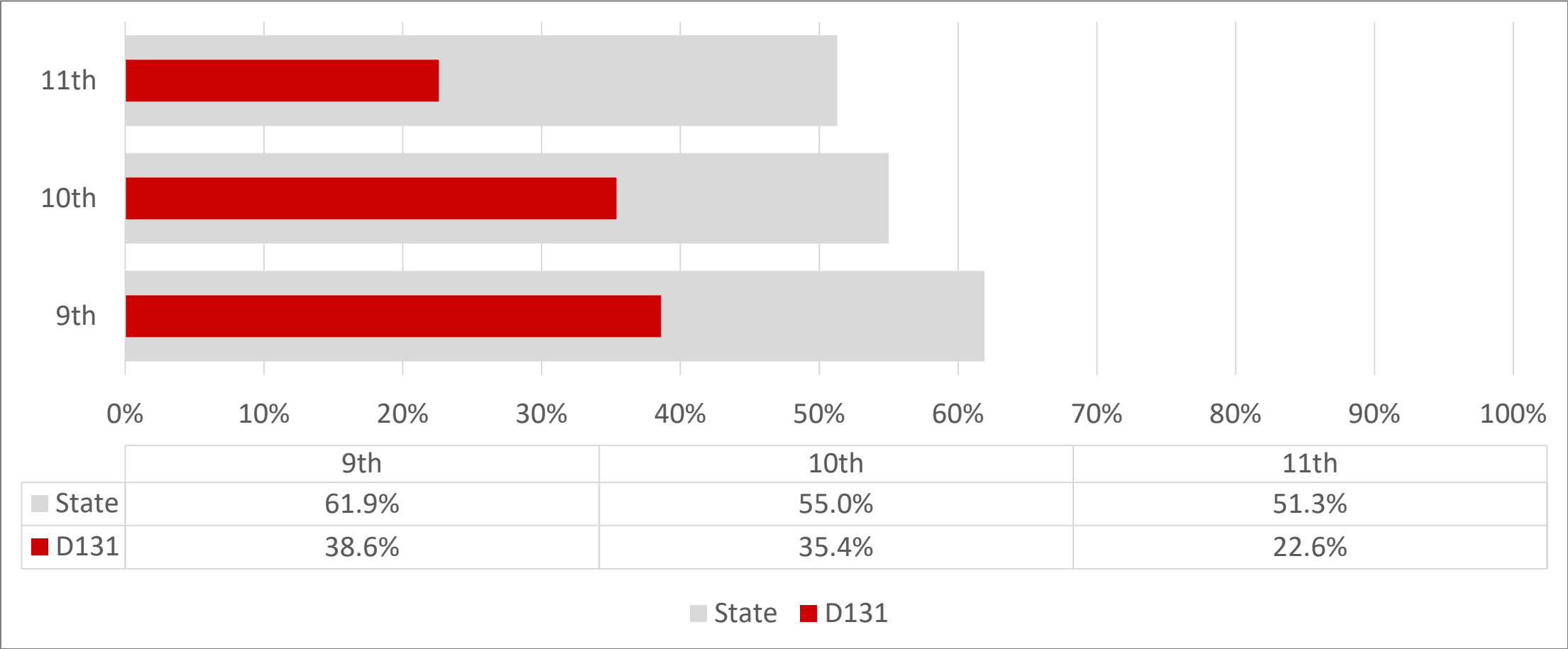
# Percent of Students Proficient and Above Children with Disabilities (CWD)

IAR



# Percent of Students Proficient and Above

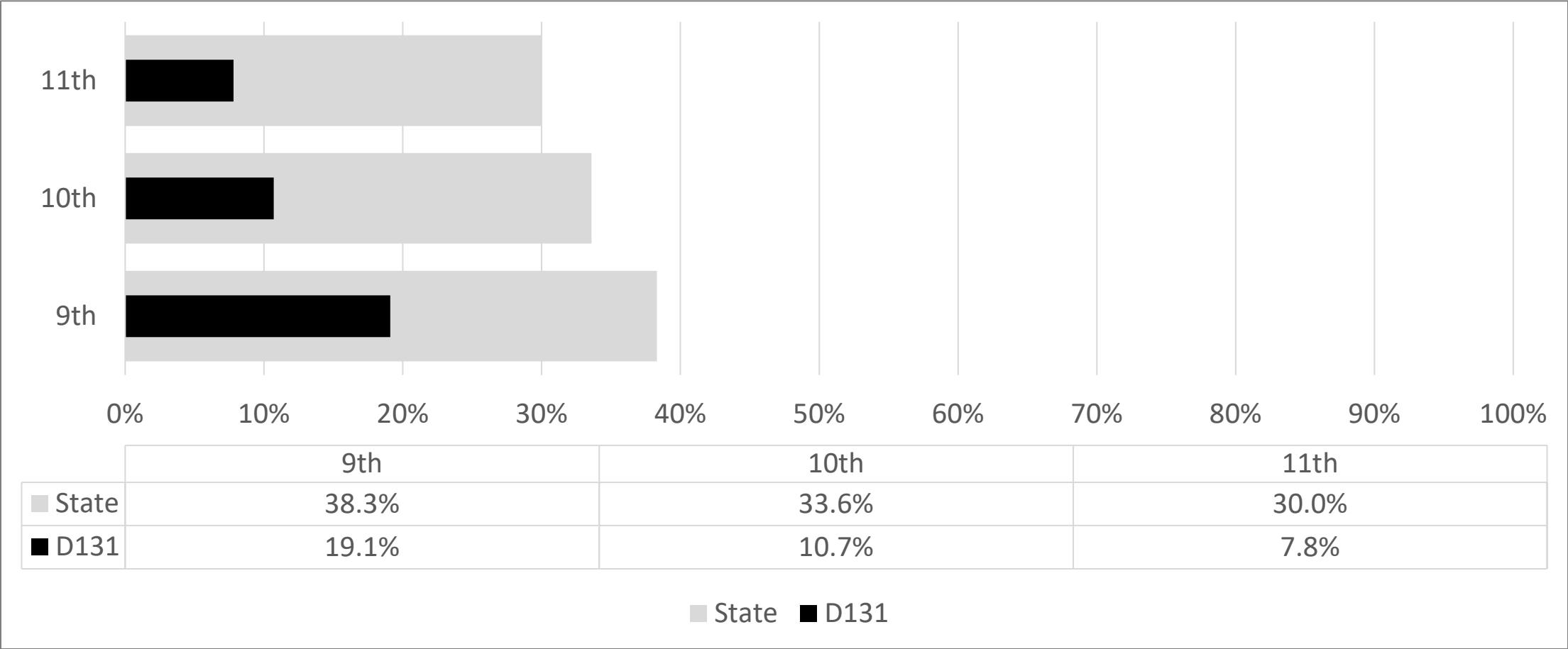
ACT & DLM





# Percent of Students Proficient and Above Children with Disabilities (CWD)

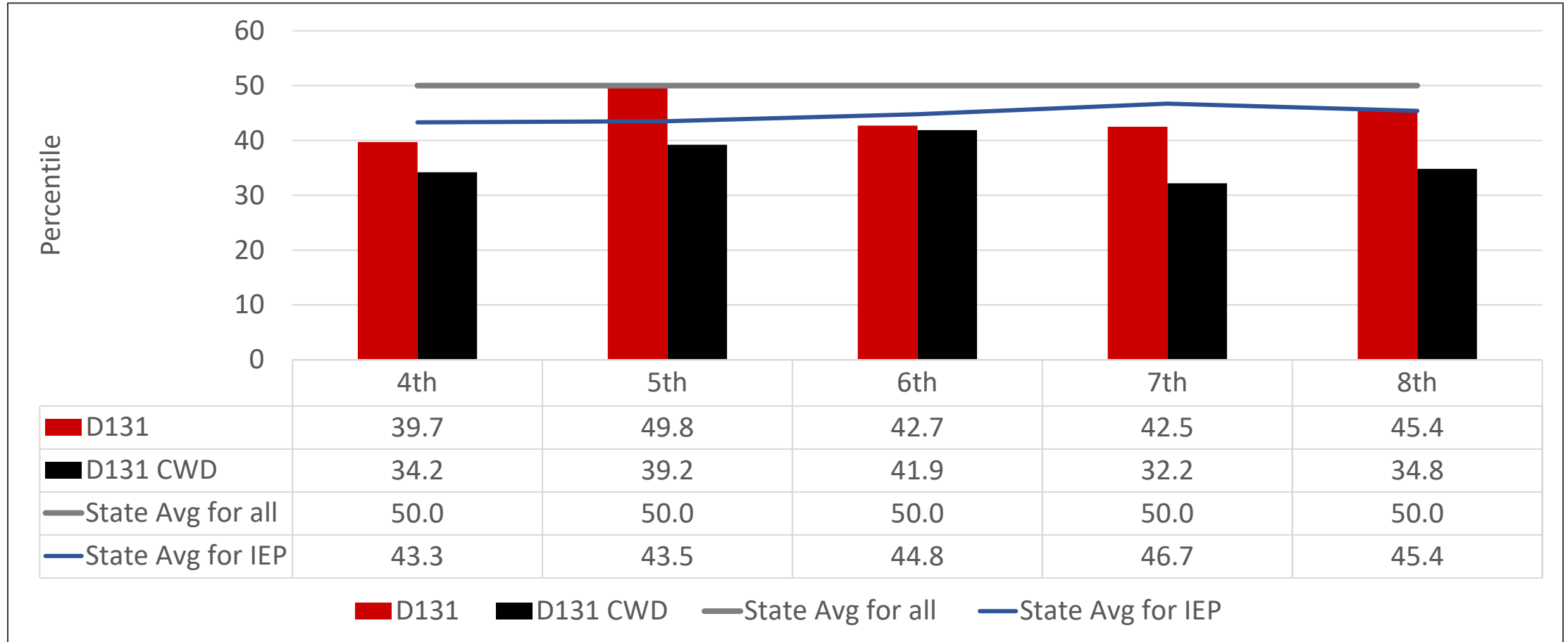
ACT



# Student Growth Percentiles

## All D131 and CWD

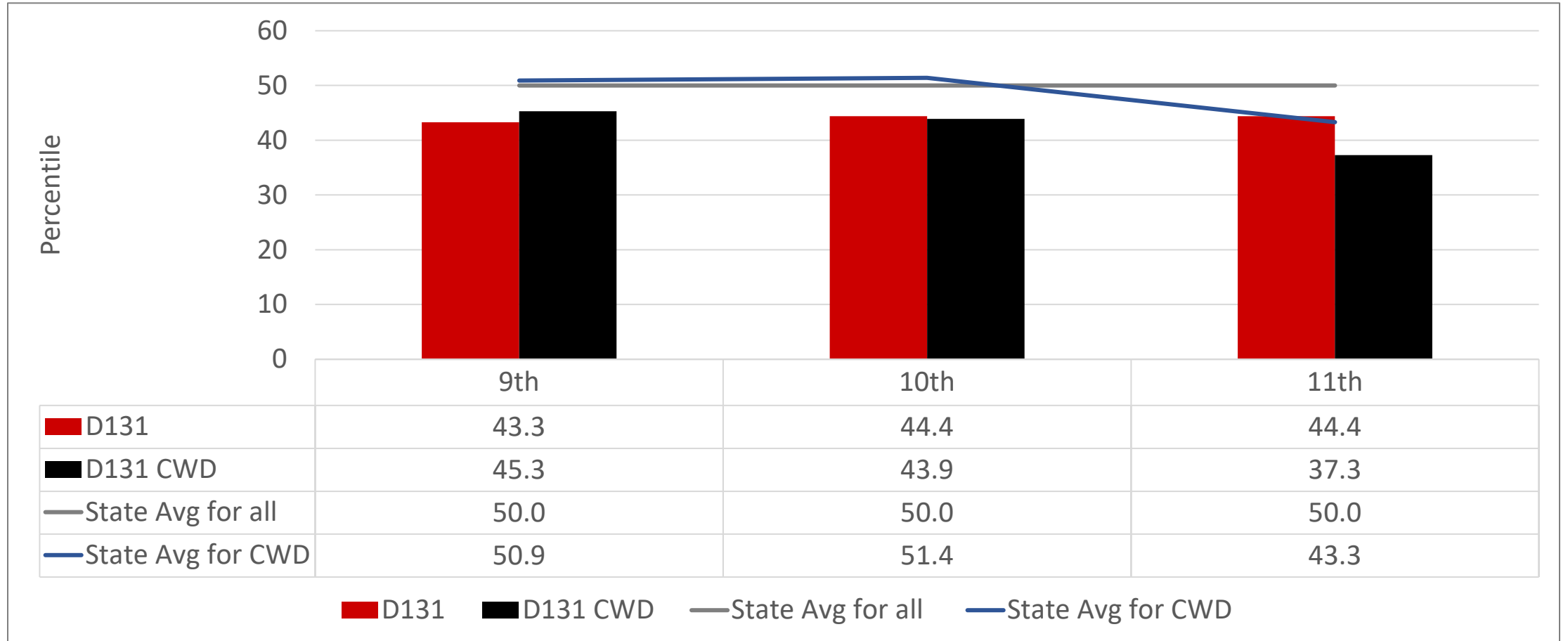
IAR



# Student Growth Percentiles

## All D131 and CWD

ACT

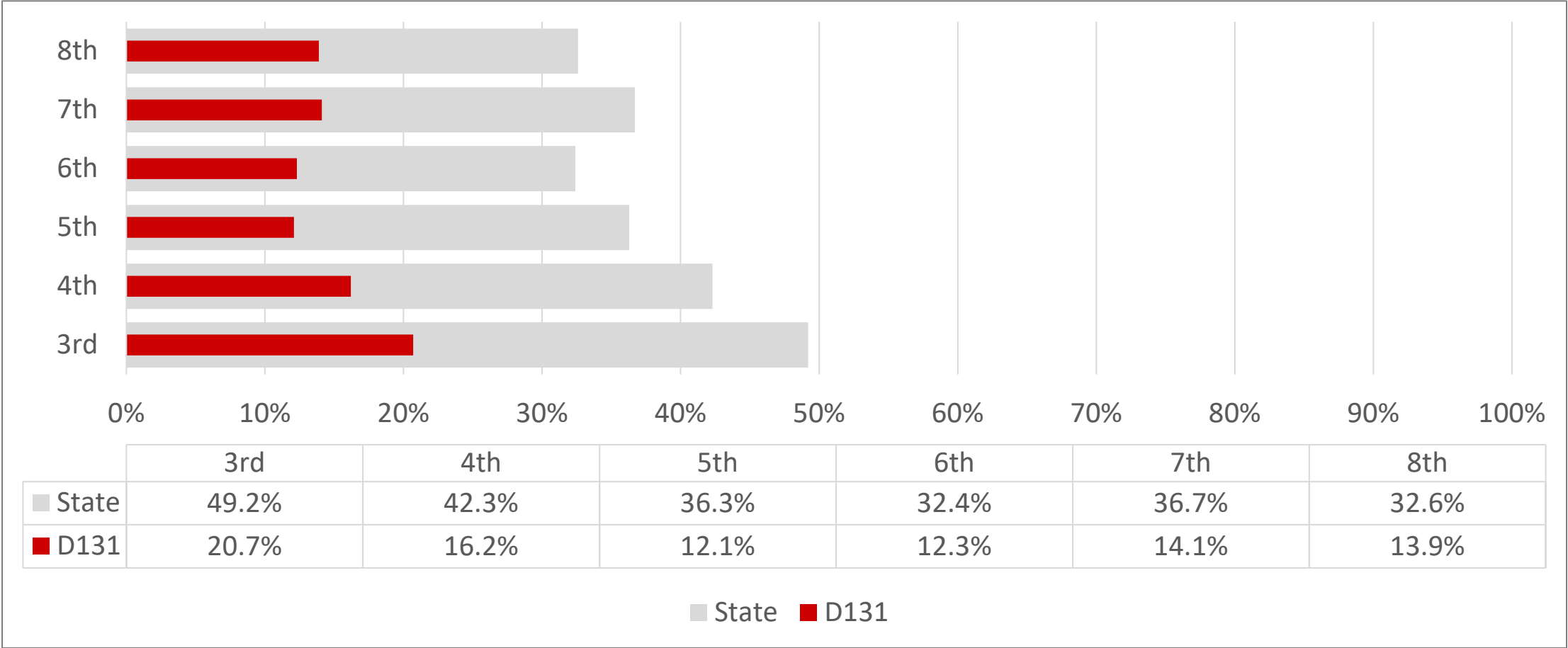


# Math

---

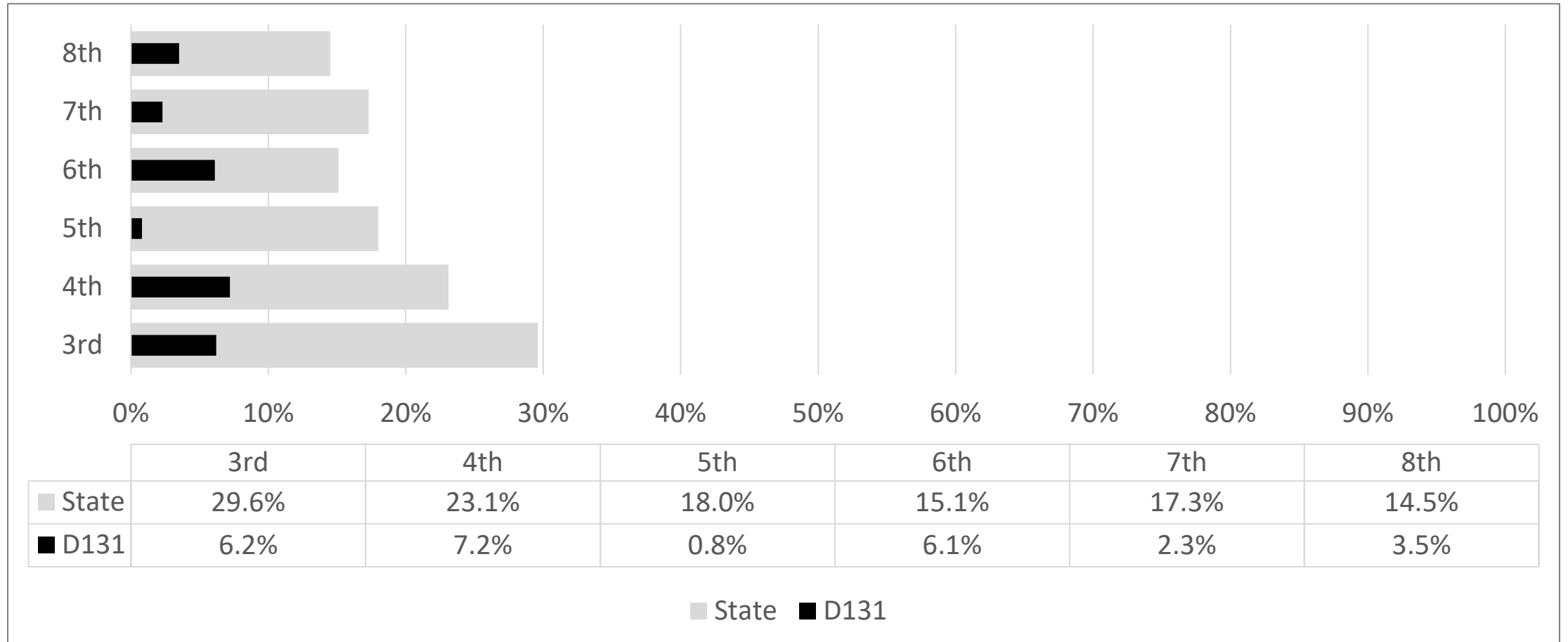
# Percent of Students Proficient and Above

IAR & DLM



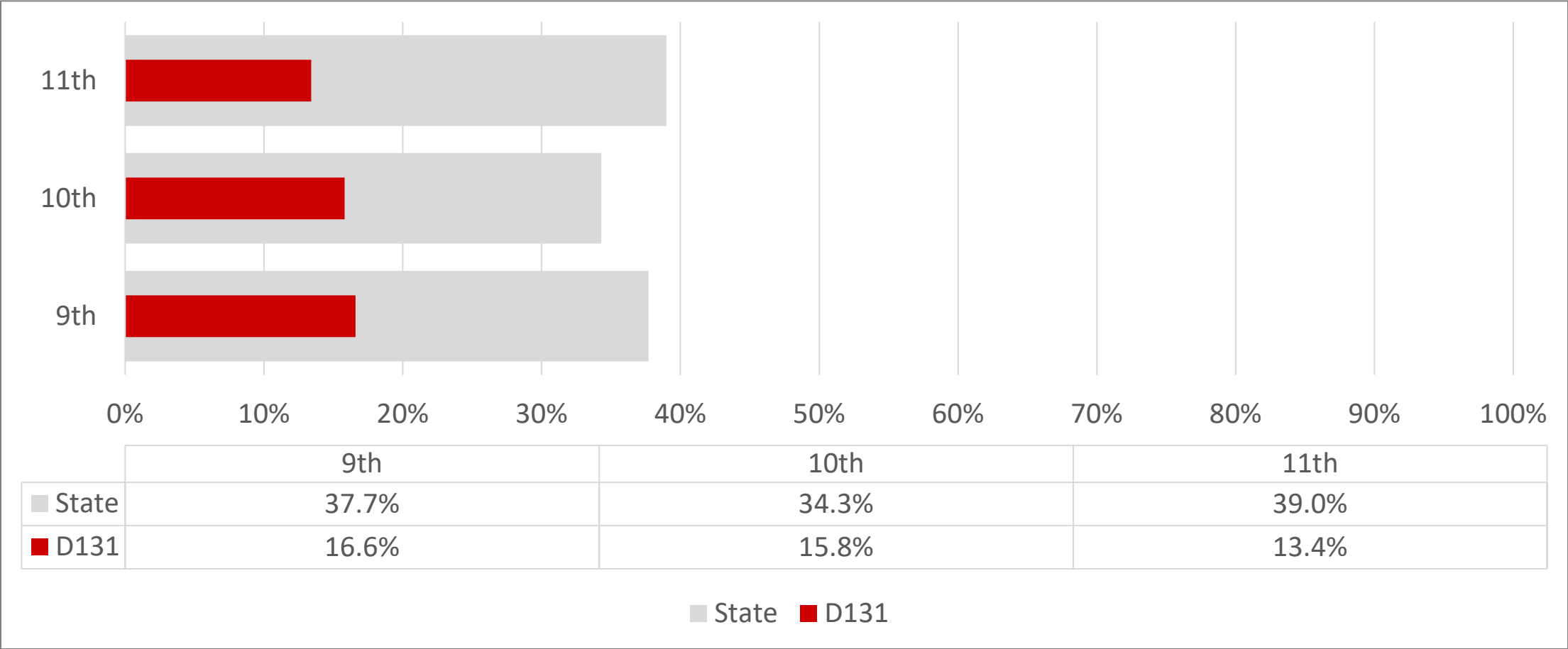
# Percent of Students Proficient and Above Children with Disabilities (CWD)

IAR



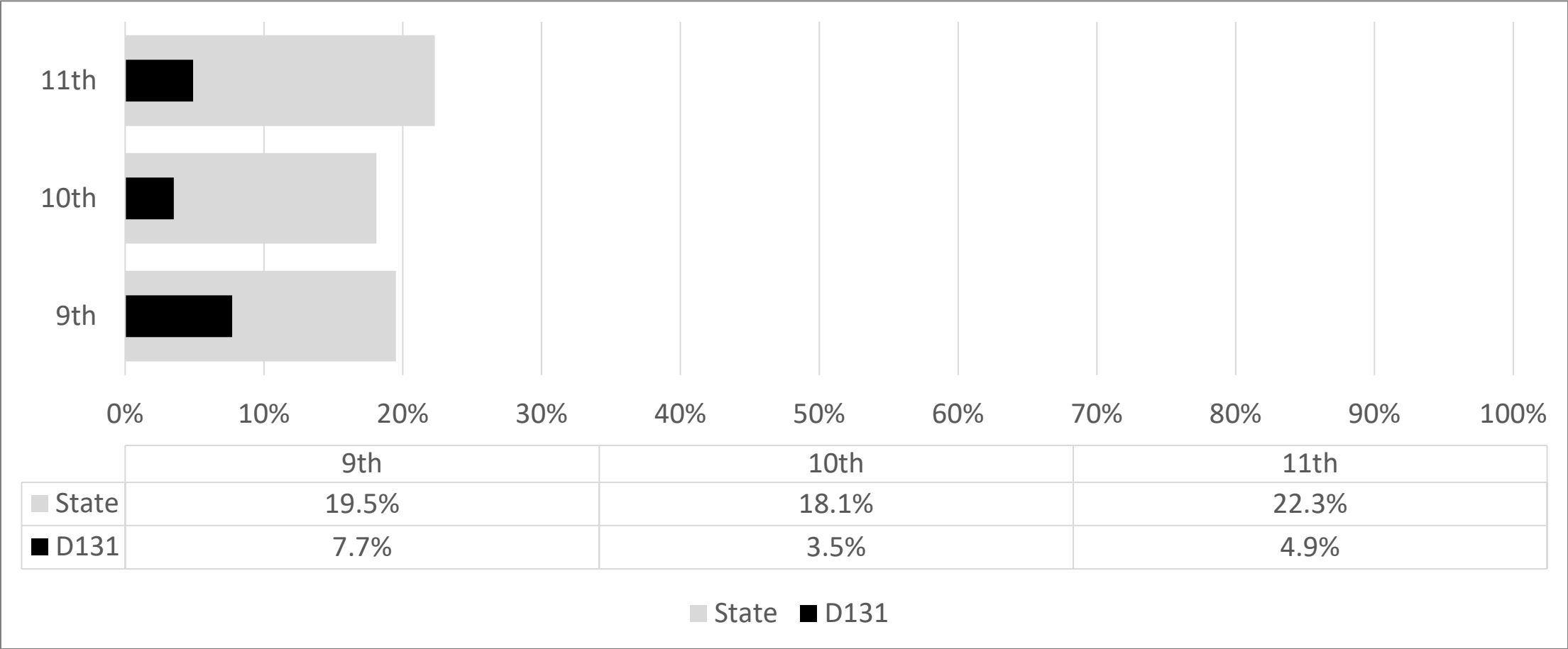
# Percent of Students Proficient and Above

ACT & DLM



# Percent of Students Proficient and Above Children with Disabilities (CWD)

ACT

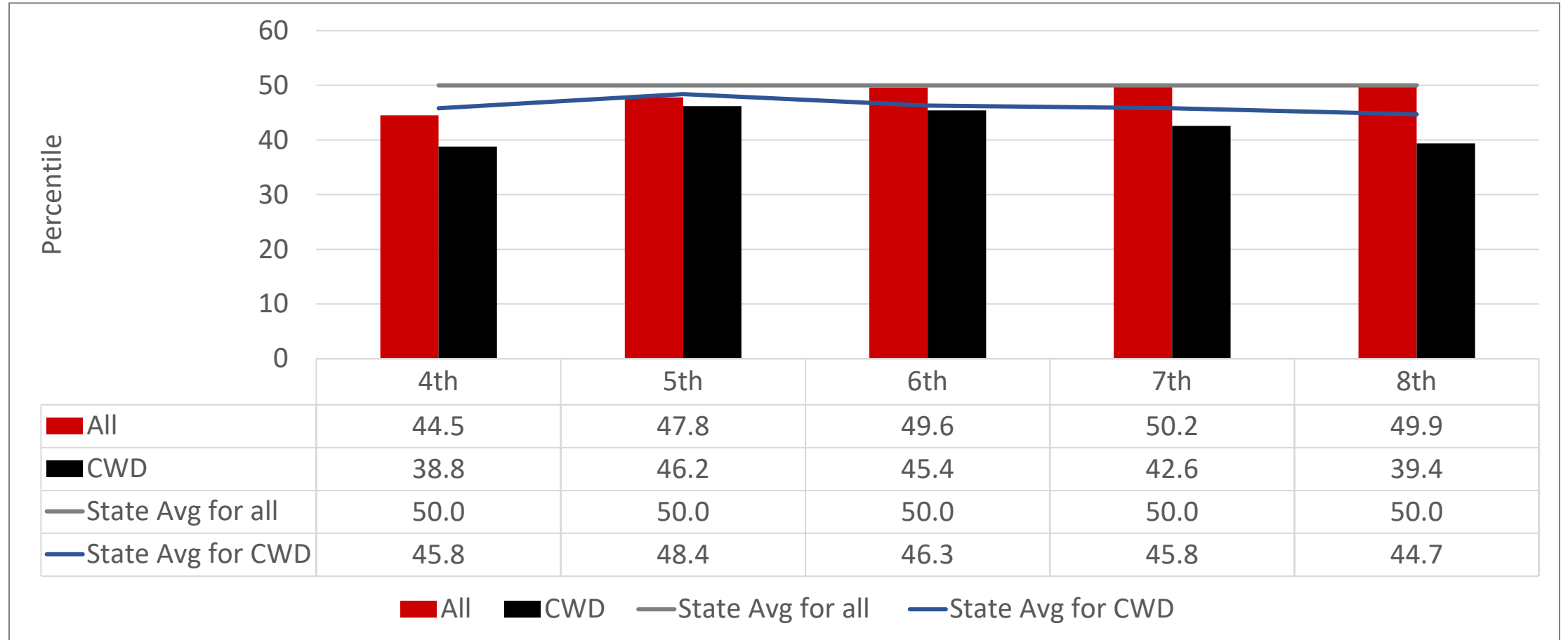




# Student Growth Percentiles

## All D131 and CWD

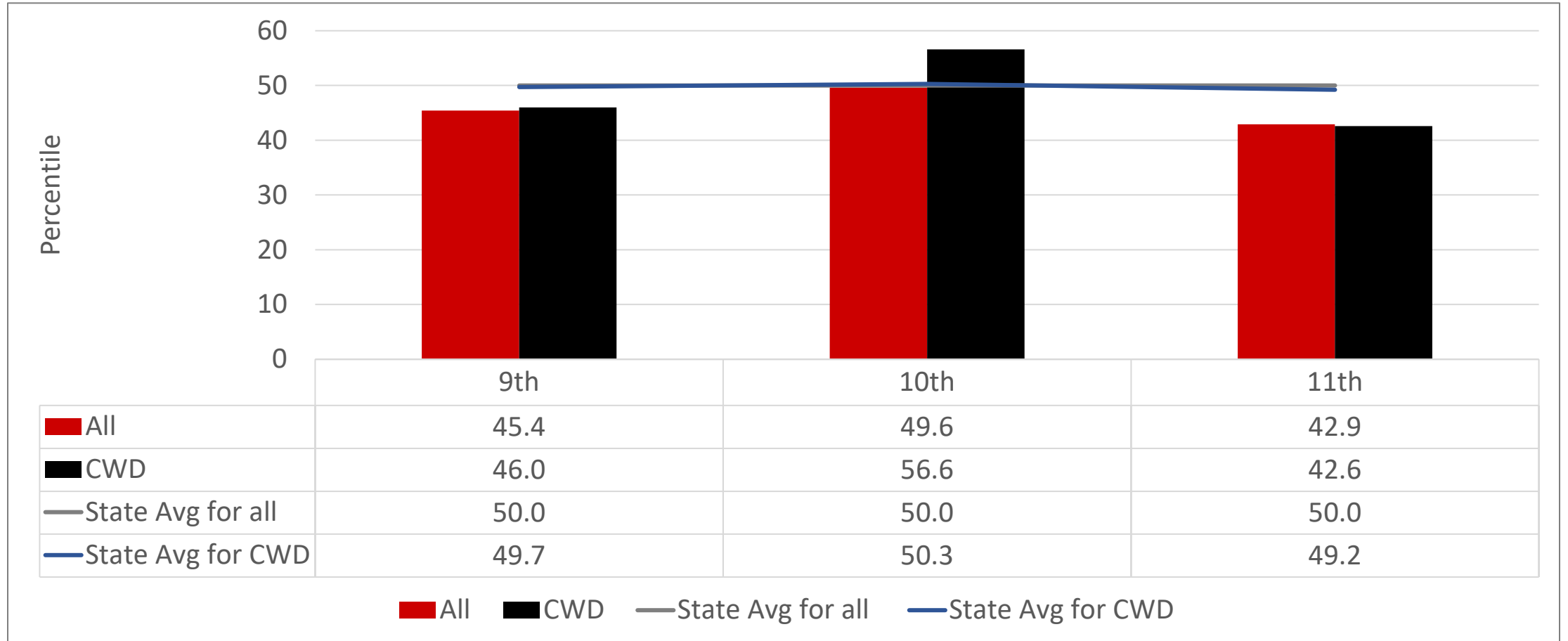
IAR



# Student Growth Percentiles

## All D131 and CWD

ACT



# Key Takeaways and Next Steps

## Takeaways

- Proficiency is not where it needs to be
- There is a performance gap between the all student and CWD group

## Next Steps

- Data exploration must continue at the school and district level
- Tier 1 literacy and math instruction is a focus
- Targeted support for CWD is a focus
- Growth and projected proficiency monitoring is needed
- Instructional coaching is a focus
- We must use data to drive our school improvement efforts

