

Duluth Preschool

Governing Board Training

Duluth Preschool STARTED with HEAD START in 1965!!



President Lyndon B Johnson, declared War on Poverty in his 1965 State of the Union Speech and a team of experts from Yale and Harvard set to work developing a preschool program that would help communities meet the needs of disadvantaged preschool children.

Fun Fact #1: The original Head Start program in Duluth was an 8 week summer program at Lincoln Park Elementary School.

Fun Fact #2: We are the only Head Start program in MN where a school district is the grant recipient.

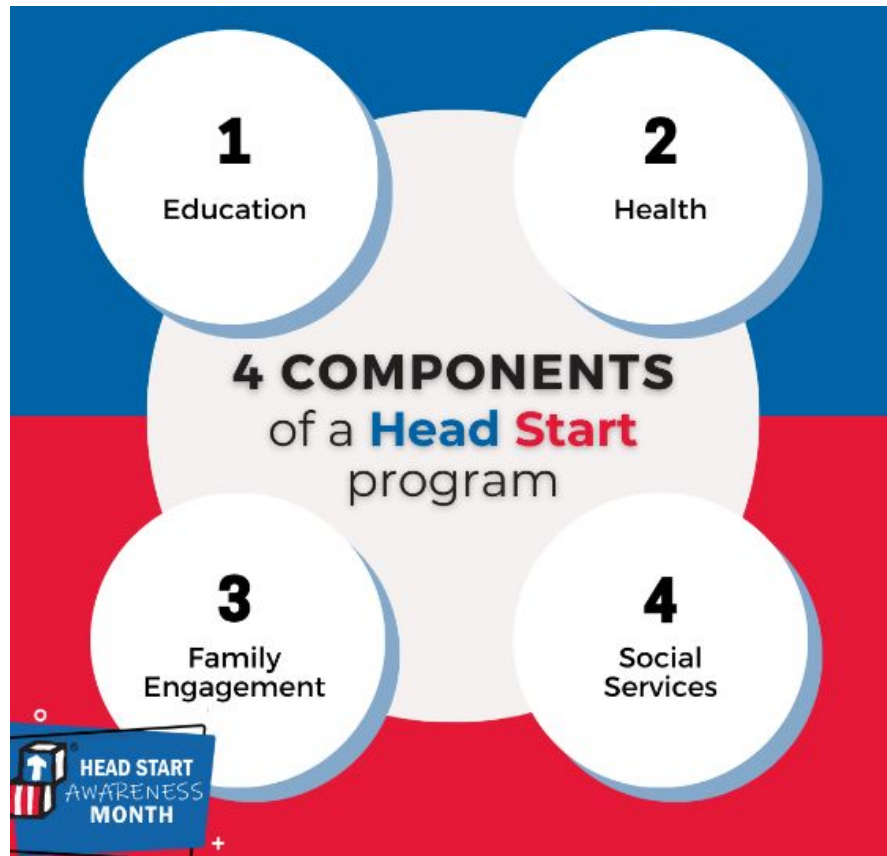
Comprehensive services set Head Start apart

Health: We support families in securing health insurance, a medical and dental home, and access to mental health resources.

Social Services: programs and services that improve the well-being of individuals, families, and communities

Family Engagement: Community and family events/ Site parent committees and Parent Policy Council are a part of our program governance. Family Engagement data is collected through the Child Plus platform

[Comprehensive Services: The Foundation of Head Start](#)



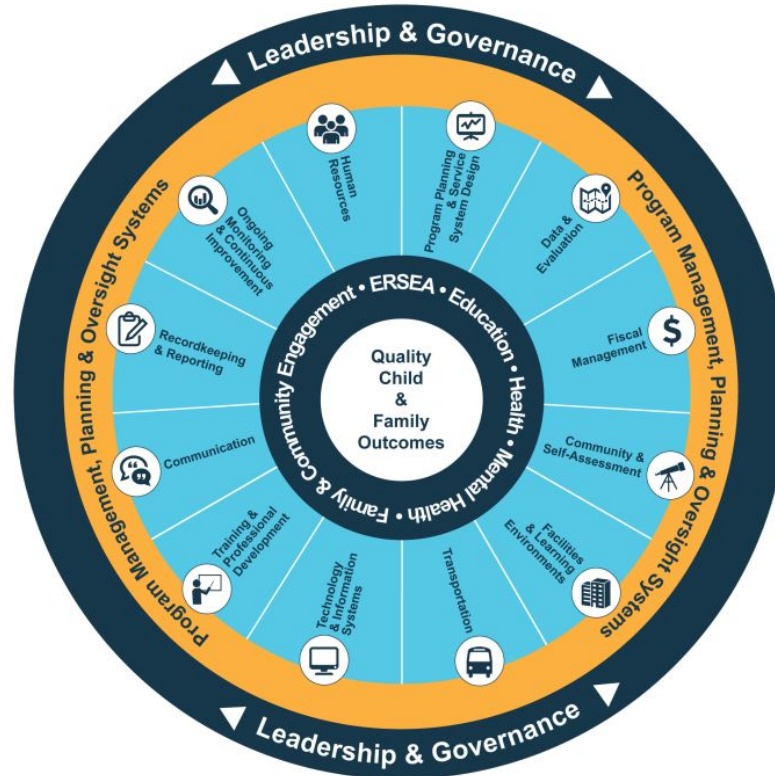
Head Start Parent, Family, and Community Engagement Framework

Positive & Goal-Oriented Relationships

Equity, Inclusiveness, Cultural and Linguistic Responsiveness

PROGRAM FOUNDATIONS	PROGRAM IMPACT AREAS	FAMILY OUTCOMES	CHILD OUTCOMES
Program Leadership	Program Environment	Family Well-being	Children are:
Professional Development	Family Partnerships	Positive Parent-Child Relationships	Safe
Continuous Learning and Quality Improvement	Teaching and Learning	Families as Lifelong Educators	Healthy and well
	Community Partnerships	Families as Learners	Learning and developing
	Access and Continuity	Family Engagement in Transitions	Engaged in positive relationships with family members, caregivers, and other children
		Family Connections to Peers and Community	Ready for school
		Families as Advocates and Leaders	Successful in school and life

Head Start Management Wheel



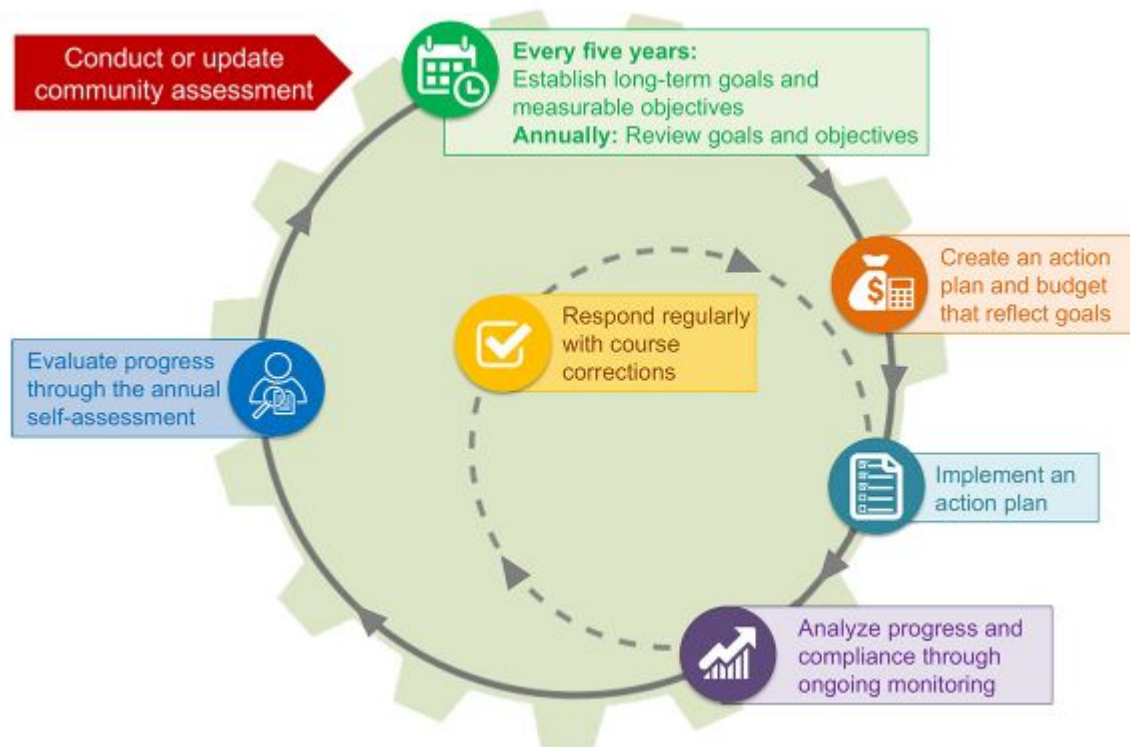
Head Start Performance Standards

Provide Head Start grantee requirements for:

- Eligibility, recruitment, selection, attendance
- Early childhood education and development
- Health and safety
- Health promotion
- Nutrition
- Disabilities
- Parent involvement
- Family partnerships
- Community partnerships
- Administrative and financial management
- Transportation and facilities



We currently in a one year grant cycle extension



Head Start Leadership and Governance



Membership and Responsibilities

Policy Council	Governing Board/ School Board
<p>Each agency must establish and maintain a Policy Council responsible for the direction of the Head Start program at the agency level.</p> <p>In Duluth, Head Start parents are eligible to run for Policy Council. Elections are held each fall, with parents from all program options and locations. Current Policy Council members facilitate the election of new board members prior to dissolving their leadership roles.</p>	<p>The Head Start Act (2007) clearly defines who should be part of the Governing Body. This requirement is very intentional to ensure the Governing Body is diverse and represents the skill set needed to run a federally funded organization that serves our nation's most vulnerable children and their families.</p> <p>In Duluth, the Governing Board is elected by the citizens of Duluth when they elect ISD709 School Board members.</p>
<p>Parents of children currently enrolled in each program option must be proportionately represented on Policy Council.</p>	<p>The Governing Board have legal and fiscal responsibility for the program.</p>

Membership and Responsibilities

Policy Council	Governing Board
A Policy Council must use ongoing monitoring results, data on school readiness goals and other information to conduct its responsibilities.	Adopt practices that assure active, independent, and informed governance of the Head Start agency and be responsible for ensuring compliance with Federal laws.
A member must stand for one year. If a member intends to serve another year, they must stand for re-election.	Responsible for other activities as outlined in the Head Start Act of 2007.
The Policy Council must include in its By-Laws, how many one year terms a person may serve, not to exceed five years. Current <u>By-Laws</u> state a member may serve 5 years.	Governing Body oversees Policy Council.
A program must seat a successor Policy Council before an existing Policy Council may be dissolved.	Governing Board members may not receive money from the Head Start grantee.
	Impasse Policy with Policy Council.

Membership and Responsibilities

Policy Council	Governing Board
A program must enable low income members to participate fully in their Policy Council responsibilities by providing if necessary, reimbursements for reasonable expenses incurred by the low income members.	
Policy Councils work in concert with Governing Boards to provide oversight for the Head Start Program.	
Impasse Policy with Governing Board.	

The Big Three: Regulations that Guide Head Start: Live links

[Head Start Program Performance Standards](#)

[Head Start Act](#)

[Uniform Administrative Requirements](#), Cost Principles and Audit requirements for federal awards

