



**ROSEVILLE AREA SCHOOLS**

# **Multilingual Programming**

**April 14, 2026**

# Multilingual Programming

- Cultural Liaisons
- Dual Language Spanish Immersion (K-12)
- English Language Development Program (PK-12)
- Connecting and partnering with families
- Providing professional development to early childhood educators, classroom teachers, MLL/ELD staff, and instructional leaders



# Cultural Liaisons



**Front row: Hsar Htoo, Indira Rangel, Mya Phyu, Maider Lee, Cecilia Martino, Zoraa Quoie, Kowthar Ismail, Elizabeth Gallegos**

**Back row: Gregory Bess, Enrique Araya, Lourdes Flores-Hanson, Joelle Lipa**

**Not pictured: Savannah Rojas**



# The Role of Cultural Liaisons

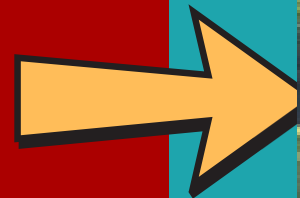
**Our cultural liaisons team provides support to our students, families, and staff in a multitude of ways, in a culturally and linguistically responsive manner.**

**This year we have cultural liaisons for seven languages/cultural groups:**

- African American
- American Indian
- Hmong
- Karen
- Nepali
- Somali
- Spanish

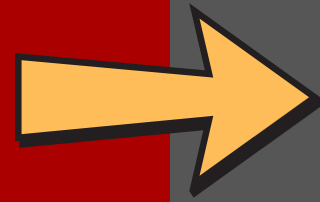
# Dual Language Spanish Immersion K-12 Programming

**Our Dual Language Spanish Immersion program exists to provide students with a solid education to become bilingual, biliterate, and multicultural leaders in our globalized society.**



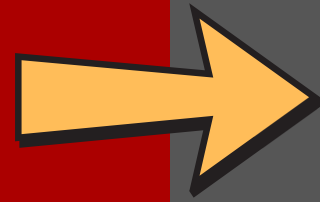
Little Canada Staff

# **Little Canada DLSI Program Data Points**



- **374 students enrolled in K-6 DLSI**
- **235 Spanish Home Language (SHL)**
- **139 English Home Language (EHL)**
- **Students remain in our DLSI program with only 1.5% student attrition per year in all of K-6 DLSI**
- **Success with kindergarten enrollment and late-entry DLSI students**

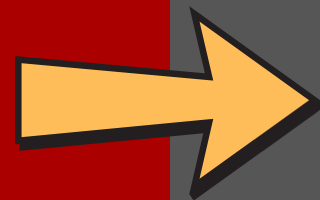
# Little Canada DLSI Program Benefits



- **Bilingualism and biliteracy**
- **Grade-level academic achievement in both program languages**
- **Sociocultural competence**



# **Little Canada DLSI Program Updates**

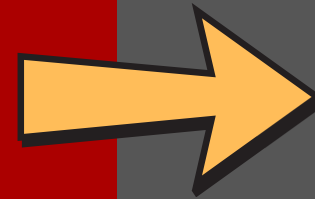


- Requested two Amity International interns for 2026-2027
- Continuing translanguaging and bridging work with our new language allocation plan
- Continuing implementation of new curriculum (Spanish Language Arts and English Language Arts) in DLSI
- Students transitioned back to in-person learning
- Stamp4 Spanish language proficiency assessment

# Our Amity Interns 2025- 2026



Yanet Menjívar (El Salvador)



Valentina Giraldo (Colombia)





# RAMS Dual Language Spanish Immersion

## Content areas:

- Lenguaje y Cultura/
- Language and Culture
- Estudios Sociales/Social Studies
- Ciencias/Science

## Enrollment:

- 7th grade: 59
- 8th grade: 50



Left to right:  
Alicia Paz, Christa Kurtz-Hueber, Silvia Vasquez,  
María Cristina Delgado

# RAHS Dual Language Spanish Immersion

## Content Areas

- Lenguaje y Cultura/Language and Culture  
~ 9th and 10th grade
- Geografía Humana/Human Geography  
• ~ 9th and 10th grade
- Proyecto Cumbre/Capstone Project  
• ~ 12<sup>th</sup> grade

## Enrollment

- 2025-2026  
112 students

## Projected enrollment

- 2026-2027  
148 students

**RAHS DLSI  
Data Points**

# Dual Language Spanish Immersion

## Our newest team member

**Meet**

**Dulce Chautla Suastegui**

- Her family is from Guerrero, Mexico
- She grew up in St. Paul, MN
- Graduated from St. Olaf
- This year she taught DLSI Language and Culture, and DLSI World Studies



# Proyecto Cumbre/Capstone Project 2026

In the final year of their DLSI experience, students engage in a capstone project designed to give them voice and choice. This culminating experience includes:

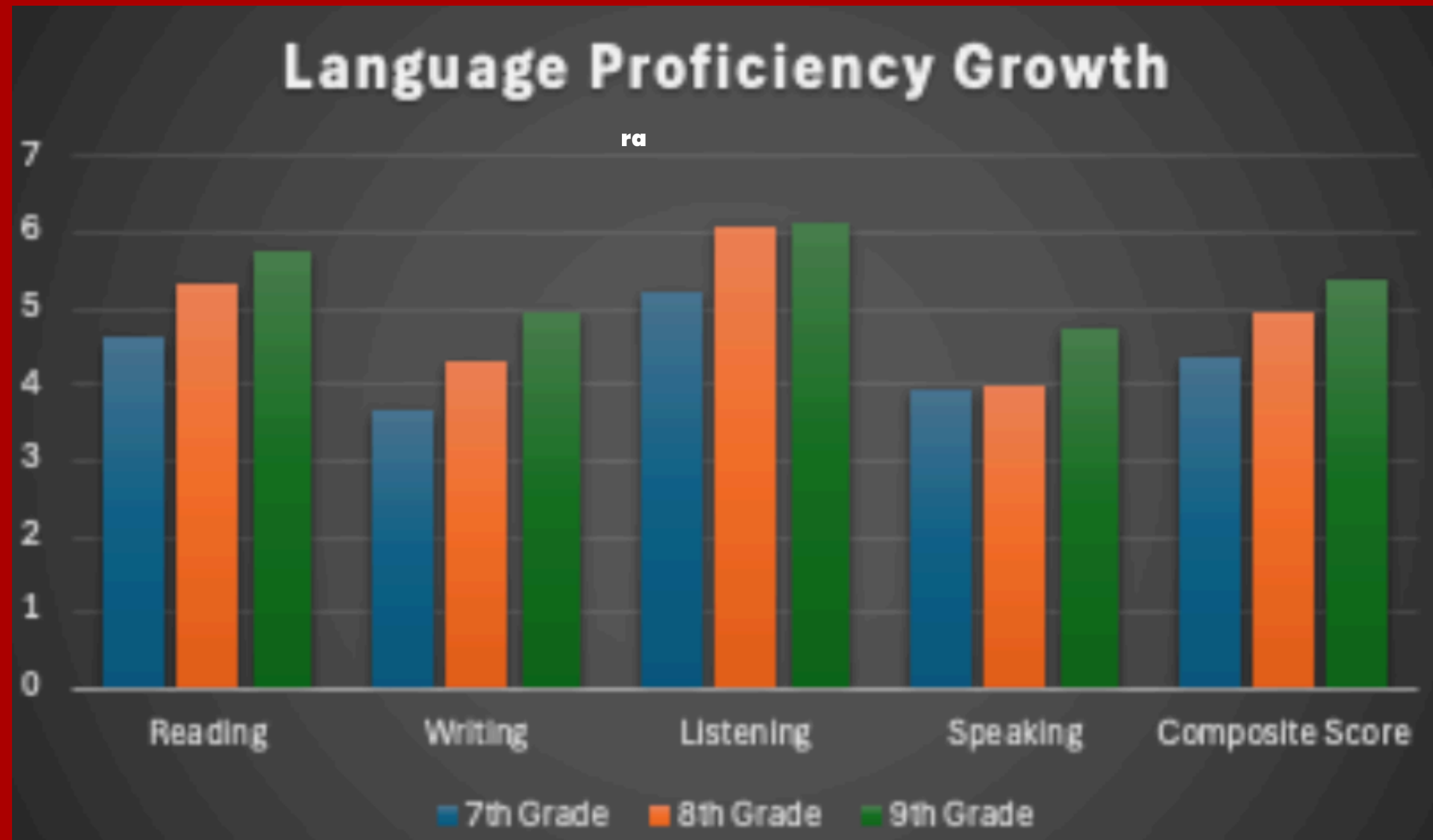
- Writing the story of their educational journey
- Creating and implementing a project that makes a positive impact in their **community**



El Proyecto Cumbre culminated with a celebration including students, families and other community members.

# Resultados del examen Stamp4S

## Stamp 4s Assessment Results



# Dual Language Spanish Immersion Student Guests

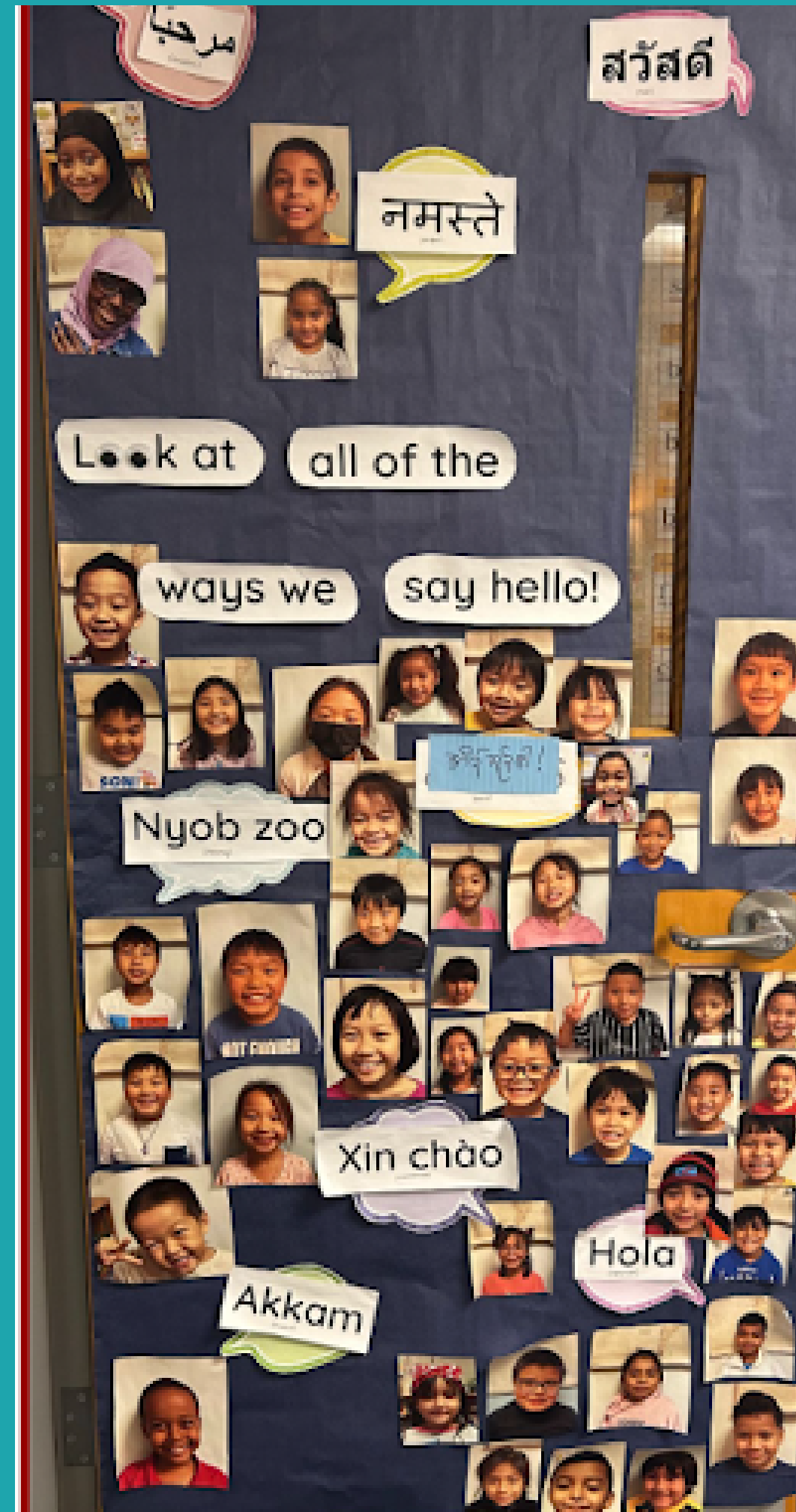
- **Jane Paddock - Senior, 13 years in the DLSI program, native-English speaker**
- **Madeline Uriostegui - Sophomore, 7 years in the DLSI program, native-Spanish speaker**

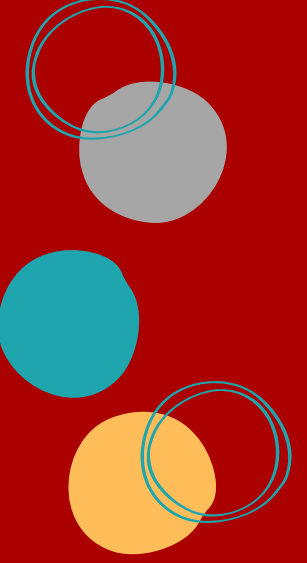
## Takeaways

**DLSI enriches our community by:**

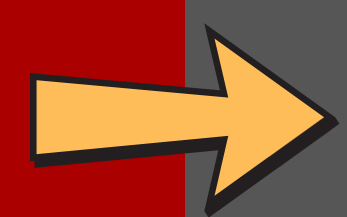
- **teaching and encouraging bilingualism and biliteracy**
- **providing a space for our students where students feel comfortable being themselves and encourages them to be adventurous in areas new to them**
- **creating a smaller school within the bigger schools**

# English Language Development Program





# **ELD Program Mission**



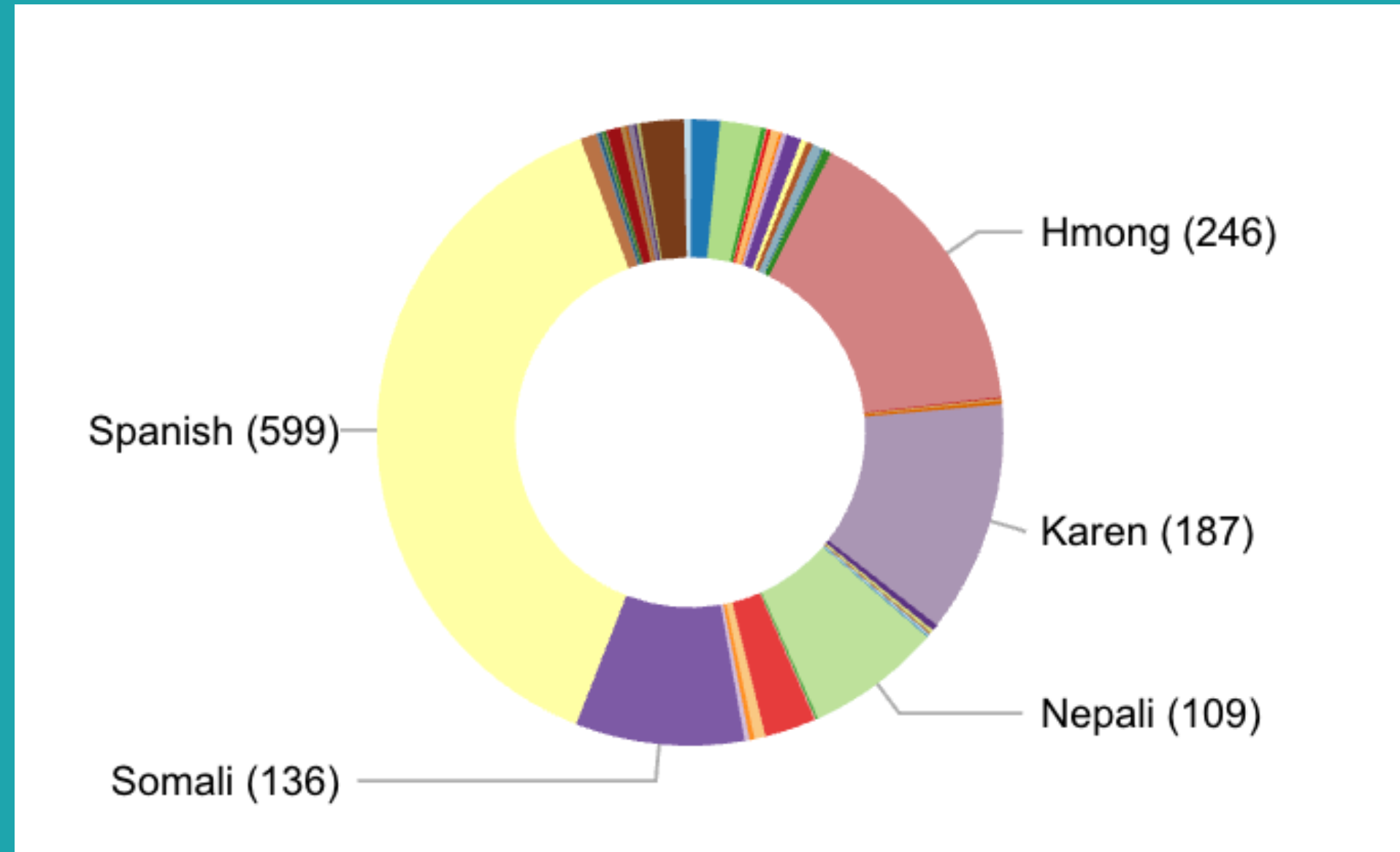
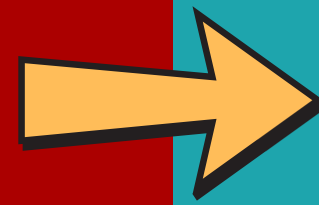
**The English Language Development (ELD) Program provides research and evidence-based language instruction and programming support for students receiving ELD services. Our program advocates for equity for multilingual students in all learning environments.**

# K-12 ELD Student Overview

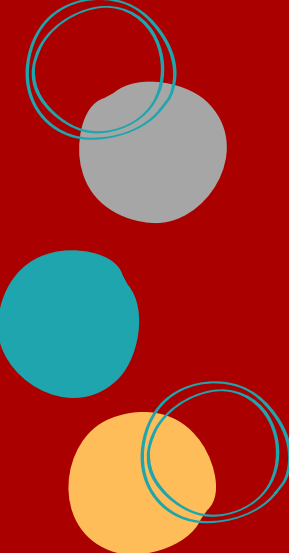
**91 languages  
represented in our  
schools**

**918 students in grades  
PreK-6**

**501 students in grades  
7-12**



**Roseville Area Schools is currently providing ELD services to 1419 students!**



# **Students in grades Pre-K - 12**

**1,419 total  
students**

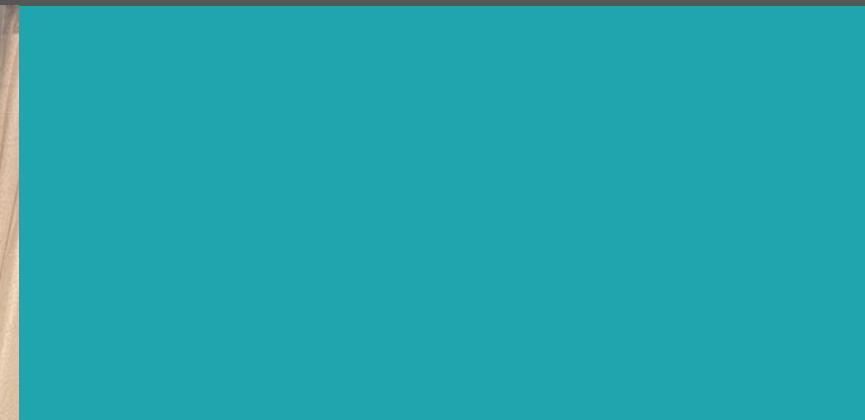


- **School Readiness Plus/ECSE: 54**
- **Brimhall Elementary: 110**
- **Central Park Elementary: 112**
- **Edgerton Elementary: 153**
- **Emmet D. Williams Elementary: 67**
- **Falcon Heights Elementary: 29**
- **Harambee Elementary: 75**
- **Little Canada Elementary: 210**
- **Parkview Center: 110**
- **Roseville Area Middle School: 168**
- **Fairview Alternative High School: 18**
- **Roseville Area High School: 315**

# ACCESS Assessment Exit Rates

	2024				2025			
School	Did not qualify to exit	Qualified to exit	Total	% qualified to exit	Did not qualify to exit	Qualified to exit	Total	% qualified to exit
RAHS	225	20	245	8%	224	23	247	9%
RAMS	134	5	139	4%	139	6	145	4%
Parkview	78	10	88	11%	79	13	92	14%
Harambee	65	6	71	8%	60	3	63	5%
FAHS	15		15	0%	7		7	0%
Brimhall	91	13	104	13%	93	8	101	8%
Central Park	110	6	116	5%	111	5	116	4%
Edgerton	142	11	153	7%	142	11	153	7%
Falcon Heights	35	2	37	5%	31	3	34	9%
Little Canada	221	8	229	3%	228	16	244	7%
Emmet Williams	66	1	67	1%	65	4	69	6%
<b>Grand Total</b>	<b>1182</b>	<b>82</b>	<b>1264</b>	<b>6%</b>	<b>1179</b>	<b>92</b>	<b>1271</b>	<b>7%</b>

# Highlights From our Early Childhood and Elementary Program



# Early Childhood and ECSE

Expanded support in early childhood settings to ensure multilingual learners are identified early and set up for success from the start.



## Pre-LAS Screening

Implemented Pre-LAS assessments to proactively identify multilingual learners and provide timely, targeted support.

## ECSE Collaboration

Strengthened collaboration within ECSE teams through collaborative teams.

## MLL Professional Development

Provided targeted professional development in order to build staff capacity to support multilingual learners.

# The Elementary English Language Development Team



Brimhall



Central Park



Edgerton



Emmet D Williams



Falcon Heights



Harambee



Little Canada



Parkview Center

# MLL Led Professional Development

**MLL teachers have taken the lead in delivering impactful professional development, sharing expertise and practical strategies that support all learners.**



# Collaboration



Continued, meaningful collaboration with classroom teachers has strengthened the implementation of the new ELA program, ensuring multilingual learners have equitable access to high-quality instruction.

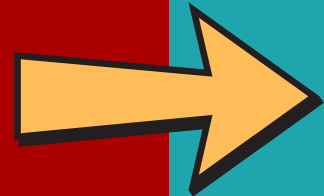
# Support During Challenging Times



**Our MLL team has shown exceptional dedication and care, supporting students and families through sensitive and complex circumstances with professionalism and heart.**

# Roseville Area Middle School ELD Program

**Left to right:  
Norah Kelly, AJ Vang,  
Jessica Nuñez, Gaby  
Balbas, Alonso Jaque  
Pino, Kelly Grucelski,  
Debbie Wuerffel; not  
pictured: Laura Franke**



# Roseville Area Middle School ELD Courses

## Co-taught Classes

- Science 7
- English  
Language Arts 7
- English  
Language Arts 8
- Social Studies 8

## English Language Development Courses

- ELD Level 1
- ELD Level 3/4

## Sheltered Content Classes

- Science 7/8
- Social Studies 7/8
- English Level 1
- English Level 2/3
- Pre-Algebra 7
- Algebra 8

# New Opportunities at RAMS



## **Increasing Overall Enrollment of ELD Students**

A record 168 students at RAMS are part of the ML/ELD Program



## **Steady Amount of Level 1 Students**

Over 15 students at RAMS are Level 1 (Emerging) English learners



## **Robust collaboration between ELD and DLSI**

More than 40 students are in both the ELD program and DLSI program at RAMS. Both programs worked together during Operation Metro Surge.

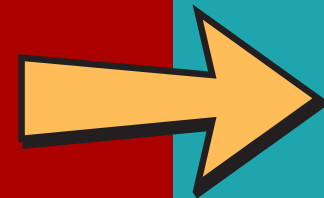


## **Collaboration with AVID**

Planned and delivered MLL/AVID Culturally Responsive PD to all Secondary educators

# Roseville Area High School ELD Program

**Left to right:  
Laura Sakirgil, Gerardo  
Moreno García, Karin  
Johnson, Can Sakirgil,  
Roger Kerbage; not  
pictured: Pablo Ochoa  
Balbas, Ger Vue,  
Kelsey Raymond, Gaby  
Alvarado**



**New**

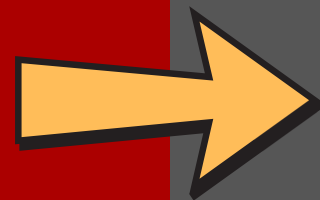
# RAHS ELD Highlights

**Continued**

- Expanded Level 1 programming
  - Sheltered content Science 9 and sheltered content English 9 for Level 1 students
  - Return of Foundations of Algebra course
- College campus field trips available to every student in an ELD class through RACF grant
- New ELD 11 courses for 11th graders with a college and career readiness focus
- MLL/AVID PD for secondary educators

- Robust service model (ELD, sheltered content, and co-taught classes)
- ELM coaching to support sheltered content teachers
- College and career readiness focus program-wide
- Ger Vue, counselor for all students in program
- 1 bilingual paraprofessionals to support students in classes (Gabby Alvarado)

# **Partnering with Families**



- **Dual Language Spanish Immersion Advisory Council**
- **Sharing resources and information for family preparedness plans**
- **Collaboration with community organizations, Dual Language Spanish Immersion and Multilingual learner teacher teams social workers, building staff, cultural liaisons, administrators, volunteers, and to provide support to families impacted by Metro surge**
- **We are grateful for the outpouring of support and dedication from every one involved on behalf of our students, families and educators.**

