



Relationships & Data Matter

Red Wing High School 23-24



What is BARR?

BARR stands for
Building Assets, Reducing Risks.

BARR believes that each and every student has the right not only to an education, but a right to success in education.



BARR SUCCESS

Every BARR school has seen notable changes during implementation, including

- **decreased failure rates**
- **decreased discipline referrals**
- **increased attendance**

These changes occur because BARR is a transformational model that causes systems level change.

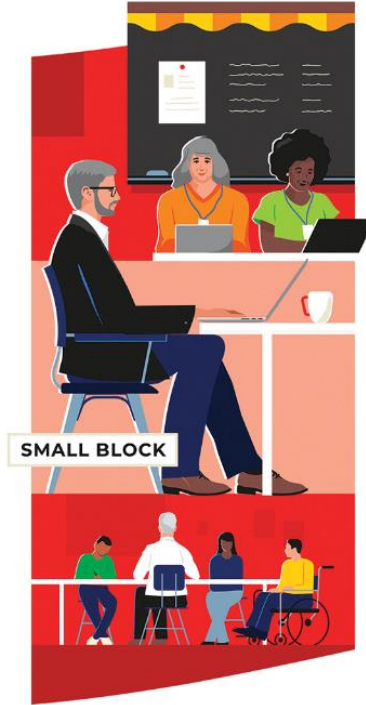


Intentional Relationships & Real Time Data

- **Relationships**
 - Essential for academic success
 - Relationships matter
 - Students do better
- **Data**
 - Real time data is essential
 - Gradebooks
 - Student's story & background



A Week in BARR



I-Time Activity



- Weekly lesson to help build strong relationships
- Focus on the whole student
- Promotes healthy choices and equity
- Data is also what we observe and learn during I-Times!



Team Meetings

- Meet twice per week
- Focus on student progress
- Brainstorm interventions to support students
- Use data!
 - Student Information System
 - Learned through I-Time Lessons



What Data?

Weekly data is that is being looked at:

- Attendance
 - Unexcused absences
 - Unexcused tardies
- Grades
- Referrals
 - Minor & Major
- I-time data



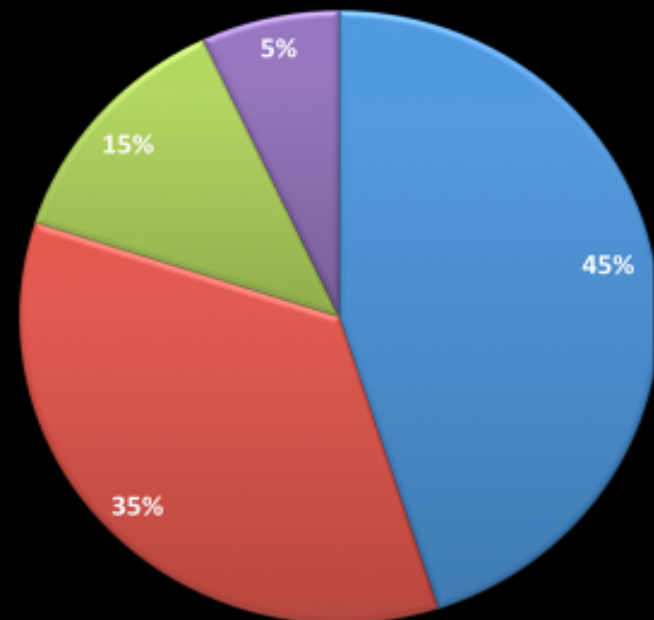
Spreadsheet-Data Collecting

- BARR Spreadsheet
 - Student Strengths
 - Grades
 - Areas of Concern
 - SMART Goal
 - Interventions/Plan
 - Level Student



Student Levels of Concern

BARR Plan for Whole School Student Support



Level 0: Thriving

Level 1: Teacher Level Interventions

Level 2: Team Level Interventions

Level 3: Community Connect
Interventions



RWHS BARR

- I-Time participation
- Relationships with students
- Goals/Academic Check-In's
- Slowing decreasing # of F's (8th & 9th Grade)



Questions?

