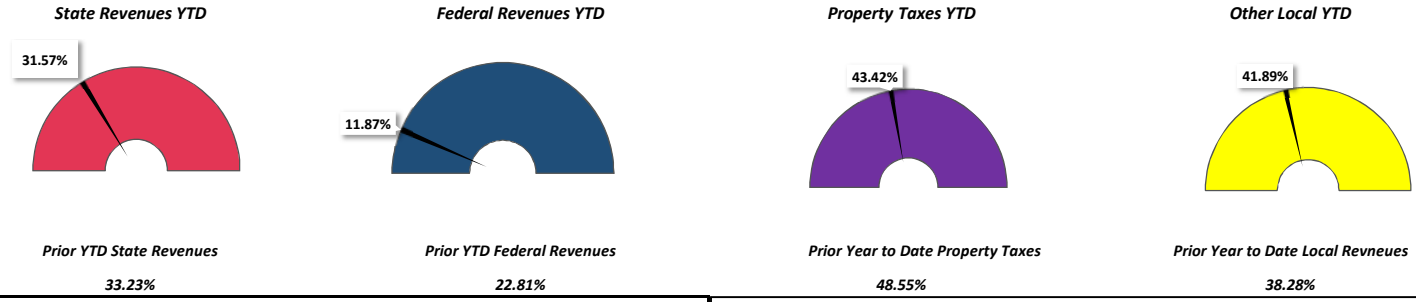


### YTD % Received vs. PYTD % Received

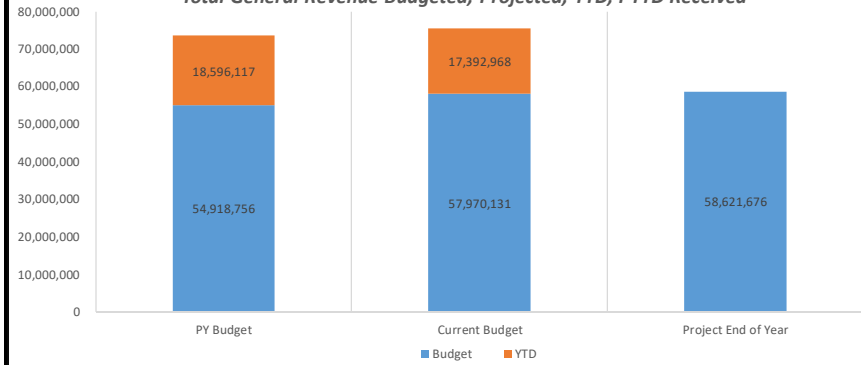


### Top 5 Revenues Received YTD by Source Code 3

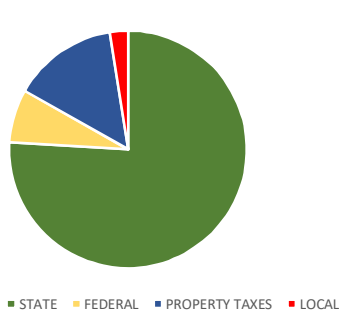
#### Variance from PYTD Received

	Current YTD	Variance vs. PYTD
1 GENERAL FUND TOTAL	\$17,392,968	-\$1,203,149
2 Total STATE REVENUES	\$12,455,832	-\$1,147,225
3 GENERAL EDUCATION AID	\$10,426,133	-\$1,367,925
4 Total LOCAL REVENUES	\$3,721,047	\$184,168
5 PROPERTY TAX LEVY, GENER	\$3,191,415	\$224,594

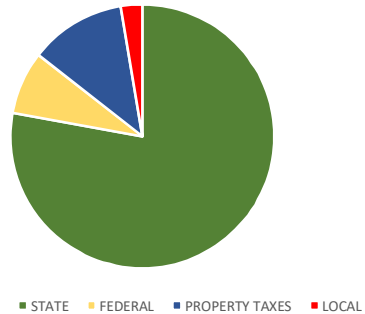
### Total General Revenue Budgeted, Projected, YTD, PYTD Received



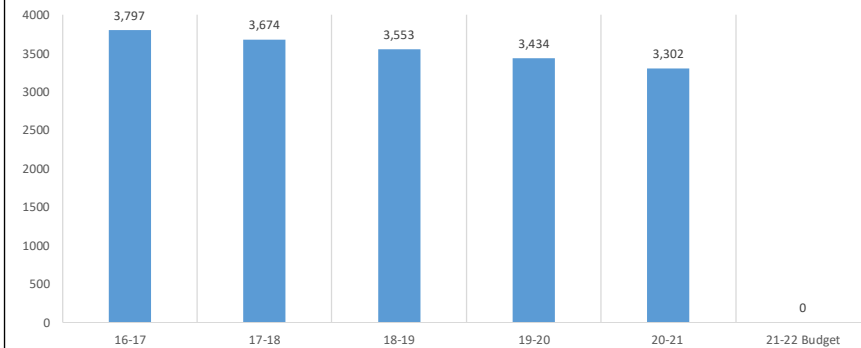
### Current Year Revenue Budget



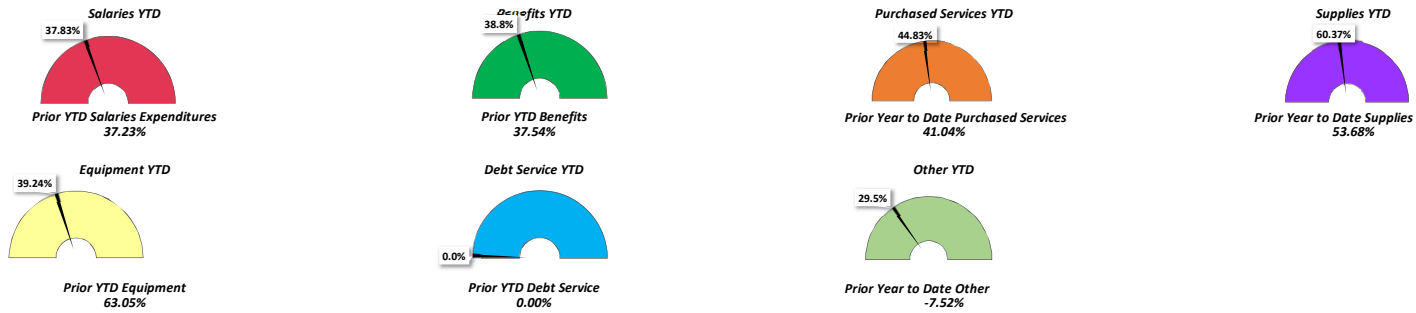
### Prior Year Revenue Budget



### End of Year ADM History



**YTD % Expenditures vs. PYTD % Expenditures**

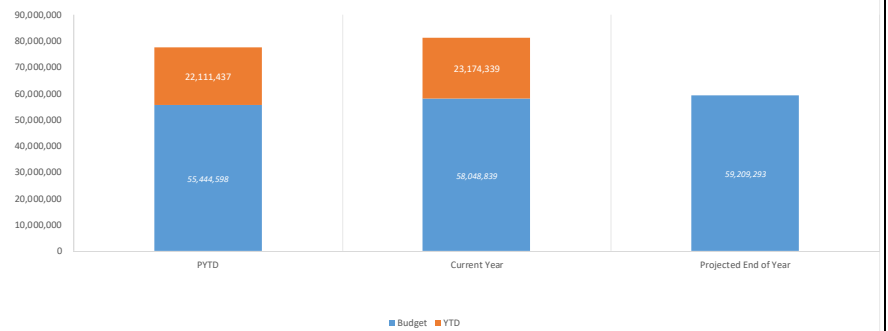


**Top 10 Expenditures YTD by Object Code 3**

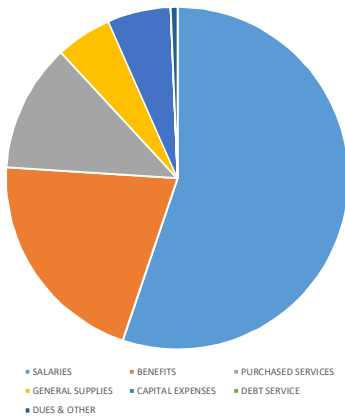
**Variance from PYTD Received**

	Current YTD	Variance vs. PYTD Received
1 TOTAL SALARIES AND WAGES	\$12,722,126	\$1,334,902
2 LICENSED CLASSROOM TEACHER	\$6,303,980	\$501,434
3 TOTAL EMPLOYEE BENEFITS	\$4,680,707	\$344,336
4 TOTAL PURCHASED SERVICES	\$3,492,318	\$733,106
5 HEALTH INSURANCE	\$1,906,097	\$96,684
6 TRANSPORT CONTR <=\$25,000	\$1,396,131	\$250,295
7 ADMINISTRATION/SUPERVISION	\$1,310,701	\$6,221
8 FICA/MEDICARE	\$933,975	\$101,811
9 TRA	\$745,482	\$95,250
10 CERTIFIED PARA/PCA	\$702,936	\$92,297

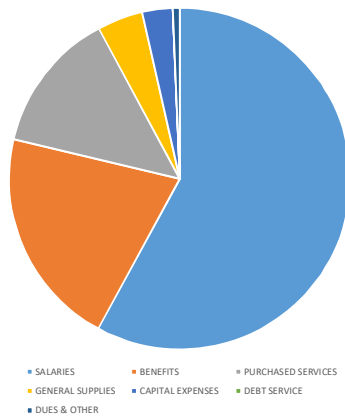
**Total General Expenditures Budgeted, Projected, YTD and , PYTD Expended**



**Prior Year Final**



**Current Year Budget**



**Prior Year Final and Current Budget by Program**

