

Morrow County School District

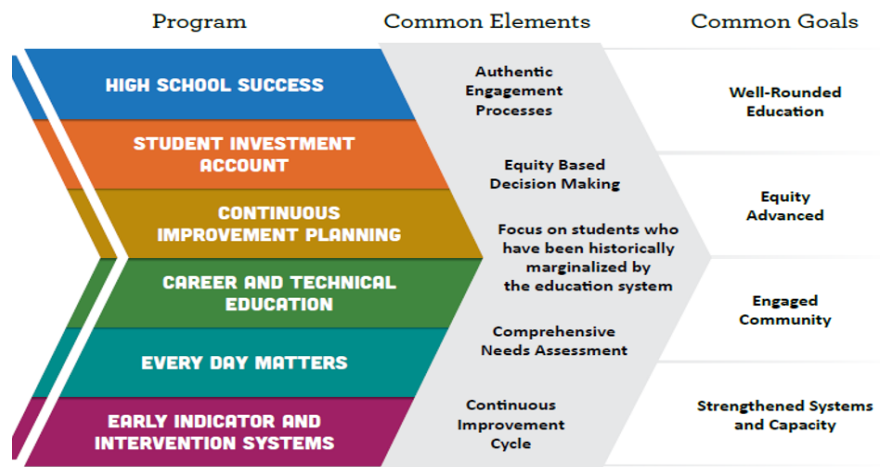
Integrated Plan

What?

This **Integrated Plan** is the product of an extensive, ongoing process that elevates community feedback and a comprehensive needs assessment to guide our implementation of state and federal initiatives and investments of these critical funds over the next four years.

Why?

ODE's **Application Process** was designed in response to requests from educational leaders and state legislators to *combine 6 separate program requirements and common goals into one plan* and create an accountability framework for measuring progress over time.



How?

Our planning team has spent months gathering feedback from our stakeholders (students, families, community and staff) and reviewing data to assess district strengths and challenges, with a focus on ensuring all voices are represented and that plan priorities address the opportunity or achievement gaps that persist in our system. The result of this work is summarized in our **Plan Snapshot**.

Once ODE has approved our plan, they will co-draft longitudinal performance growth targets for our student populations. We will provide quarterly financial and progress reports and an annual performance review. Additionally, we will sustain and grow our engagement efforts to strengthen the implementation of this plan through partnerships.

2023-2027 Integrated Plan Snapshot



Our intended outcomes are:

1. Continued growth in students K-8 showing 1 or more years of learning growth (ELA and Math)
2. Improve attendance rates at all grade levels
3. Improving after school / Friday school, and summer school opportunities
4. Providing continued mental health counseling and CARE support across all grade levels.

These key strategies will help us achieve our intended outcomes:

- Continue strong recruiting efforts for all categories of staff
- Building stronger community partnerships across the county
- Ongoing evaluation of systems (special programs, graduation, attendance, CARE / wraparound, etc.)
- Ongoing professional development for teaching and classified staff (both academic and SEL)
- Build solid intervention systems
- Systems of data monitoring
- Maintain partnerships with Community Counseling and local law enforcement (SRO program)

Key investments for the upcoming biennium include:

- Comprehensive counseling support
- Increase Instructional Coaches at the 7-12 grade levels
- School Nurses in all 3 communities
- Elementary PE teachers in each building
- Continued STEAM Fridays (4 annually)
- Behavior tech support at each elementary building
- New comer (ELD) programing in affected buildings
- High School tutors
- Additional elementary staffing to maintain low ratios
- Educational technology support
- Community Engagement activities
- STEAM related spaces in each community

Total Preliminary Funding for the 23/25 biennium:

SIA - \$4,101,989.44

HSS - \$1,440,891.71

EIS - \$13,579.08



**Note that CTE Perkins funds are accessed through the regional CTE Consortium and not included in this total.*

Questions & Comments?

For more information the full plan can be found on our website:

<https://www.morrow.k12.or.us/page/sia-plan-resources>

To provide feedback on this plan and/or if you would like to be involved in future stakeholder engagement, please contact:

Dr. Marie Shimer

Director of Educational Services

marie.shimer@morrow.k12.or.us