



SZH
ARCHITECTURE



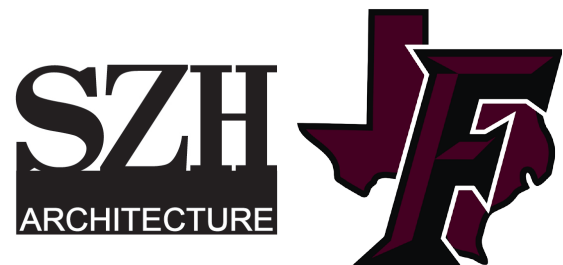
DESIGN DEVELOPMENT PACKET
Fayetteville ISD | 2017 Bond Program - 08.28.2017

TEAM MEMBERS

DESIGN OBJECTIVES

PROGRAM

RENDERS



Fayetteville ISD:

Jeff Harvey - Superintendent of Schools

Fayetteville ISD School Board:

Lanny Conway
Colby Havel
Karen Heintschel
Kayla Kaspar
Vincent Orsak
Lisa Simpson
Dawn Supak

TSI Labs:

Geotechnical Engineer

1810 S Laurent St,
Victoria, TX 77901
(361) 578-6933

Mike Tater

Dunham Engineering Inc.:

Structural Engineer

12815 FM 2154, Suite 120
College Station, TX 77845
(979) 820-2168

Rick Robertson, P.E.

SZH Architecture:

1711 Cavit Ave.
Bryan, TX 77801
979.779.5757

Jim Singleton, FAIA
Wade Zimmer, AIA
James Haliburton PhD, AIA, LEED AP

BEFCO Engineering:

Civil Engineer

485 N. Jefferson St.
La Grange, TX 78945
979.968.6474

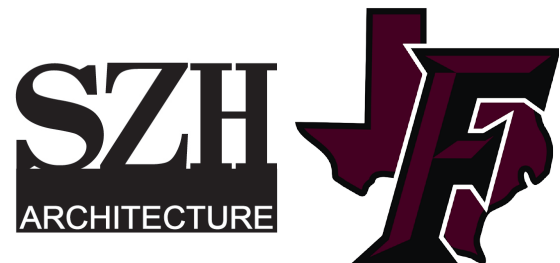
Joseph Willrich, P.E.

Ramirez-Simon Engineering Inc.:

Mechanical Electrical Plumbing Engineer

9809 Whithorn Dr.
Houston, TX 77095
(832) 261-1420

Eduardo Ramirez, P.E.
Steve Simon, P.E.



TEAM MEMBERS
DESIGN OBJECTIVES
PROGRAM
RENDERS

Design Development Objectives:

1. Decide on building envelope
2. Size and integrate all HVAC systems
3. Size all foundations
4. Match exterior materials and colors to existing buildings
5. Select interior materials and colors

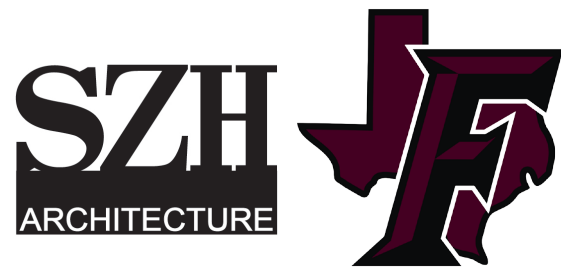
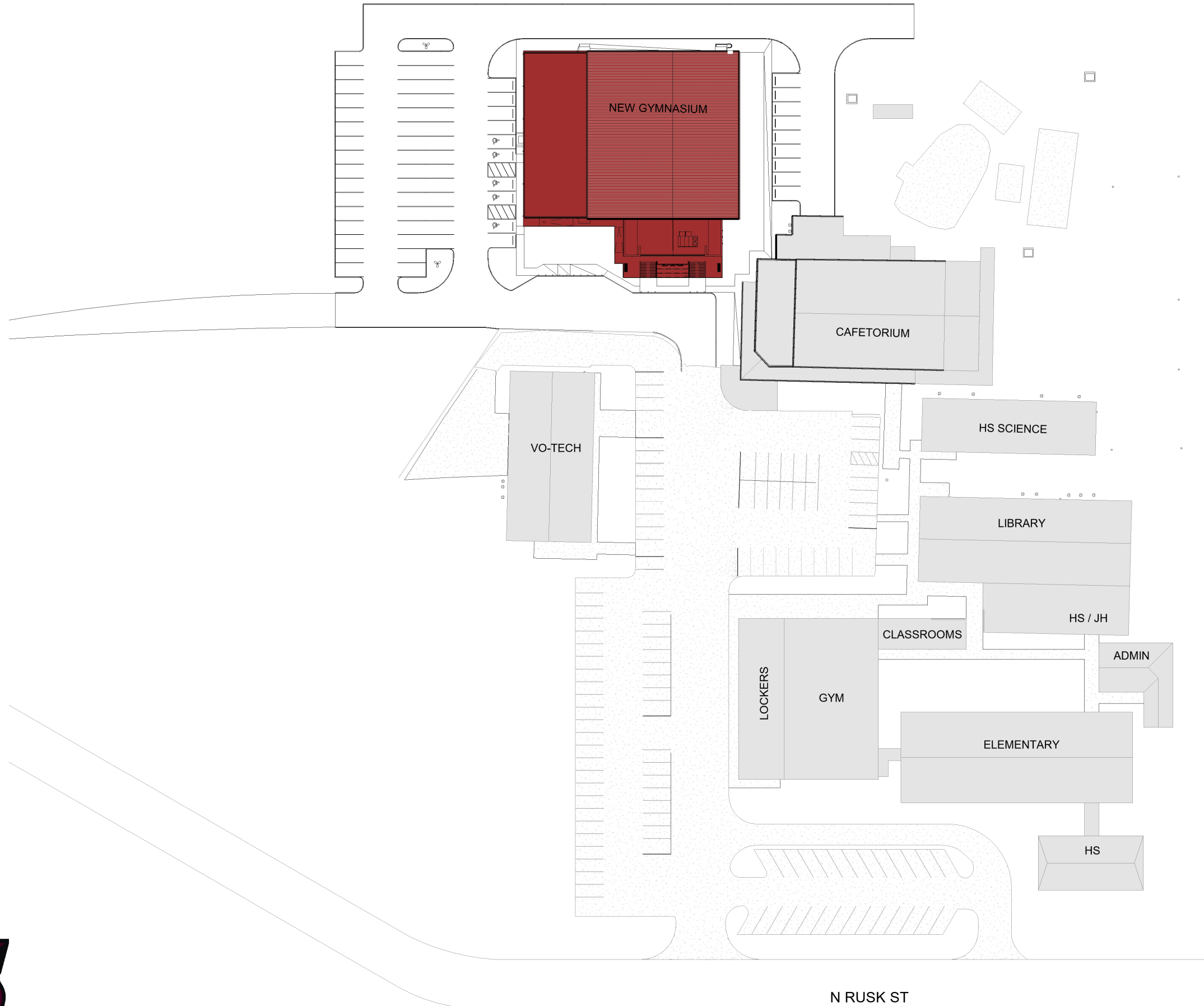
Construction Documents Objectives:

1. Develop wall sections
2. Coordinate all information with engineers
2. Coordinate track area drainage and accessible route
3. Coordinate with geotech
4. Finalize interior finishes
5. Specify all lighting and specialty equipment fixtures
6. Print full set of construction documents

The SZH Promise:

At SZH we are committed to providing the best architectural services possible. Through communication and innovation with a dedicated team of knowledgeable professionals, good design can change lives.

TEAM MEMBERS
DESIGN OBJECTIVES
PROGRAM
RENDERS

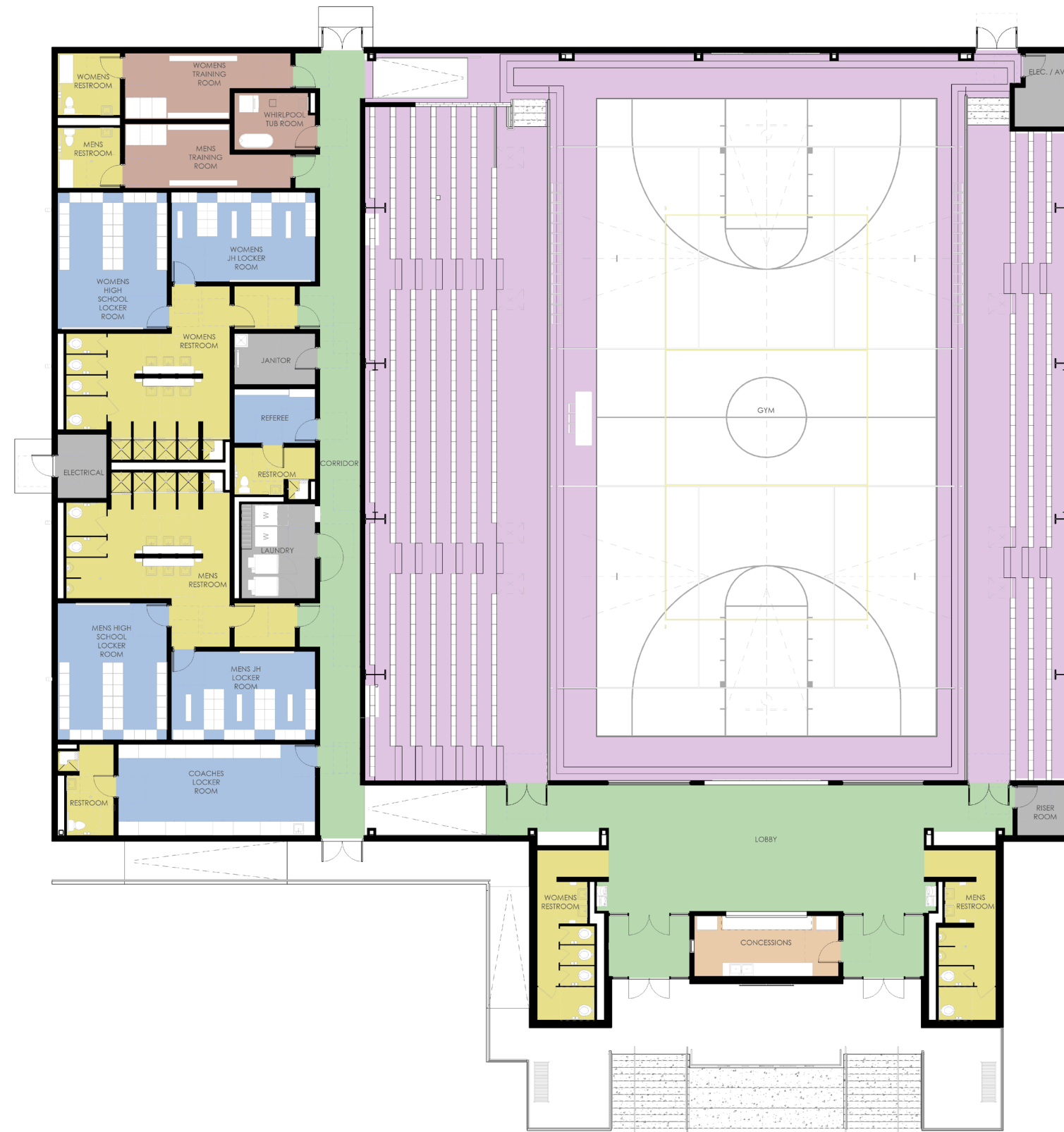


N RUSK ST

Site Plan

Department Legend

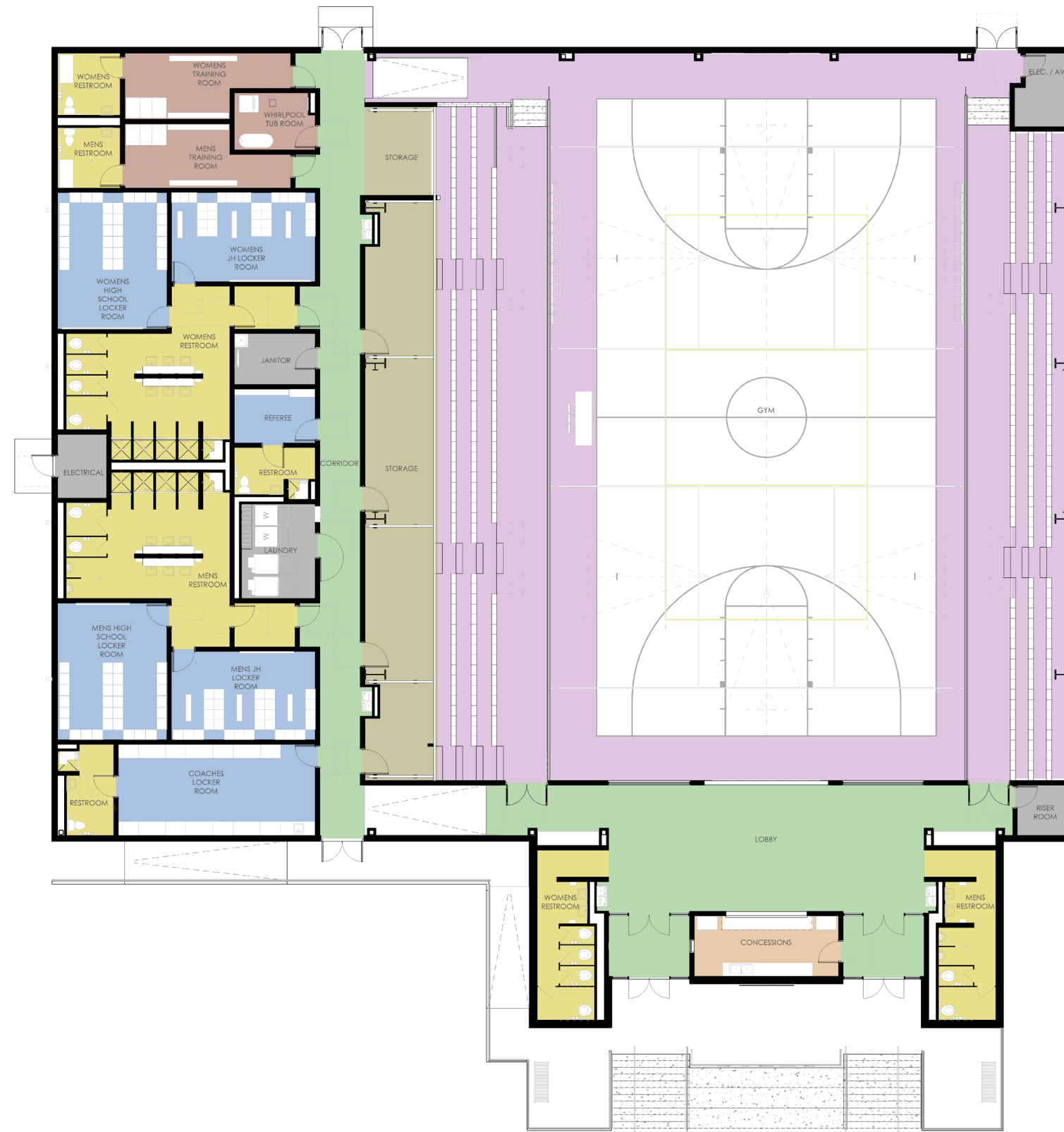
- CIRCULATION
- ELECTRICAL/ JANITOR/ RISER
- GYMNASIUM
- LOCKER ROOM
- RESTROOM
- SALES
- TRAINER ROOM



Gymnasium - Upper Cut

Department Legend

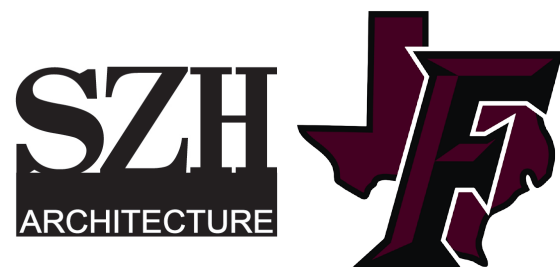
- CIRCULATION
- ELECTRICAL/ JANITOR/ RISER
- GYMNASIUM
- LOCKER ROOM
- RESTROOM
- SALES
- STORAGE
- TRAINER ROOM



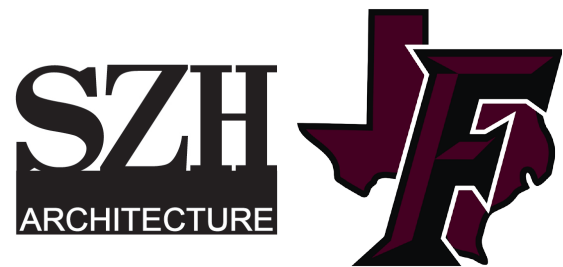
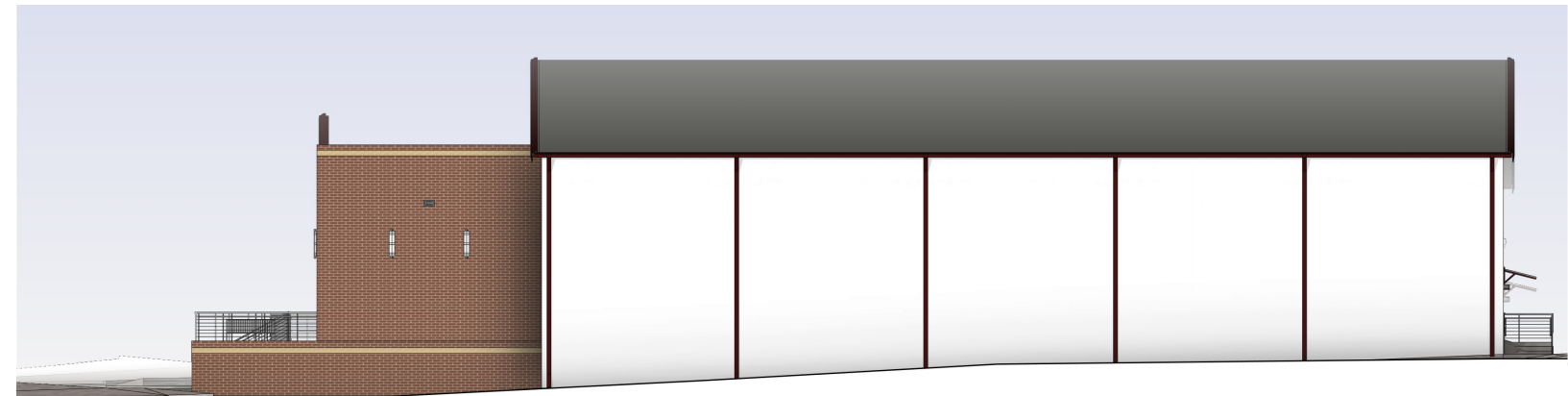
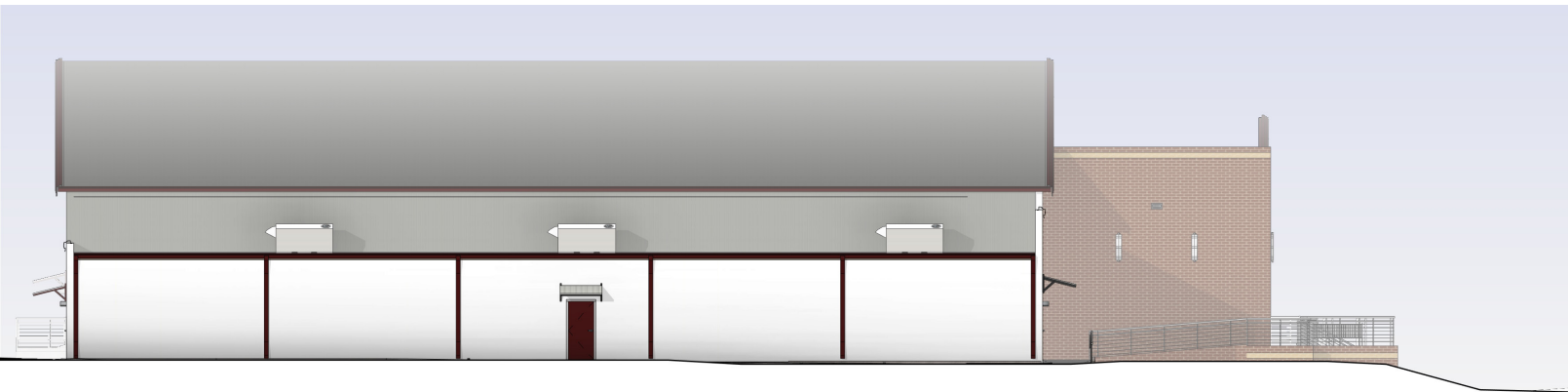
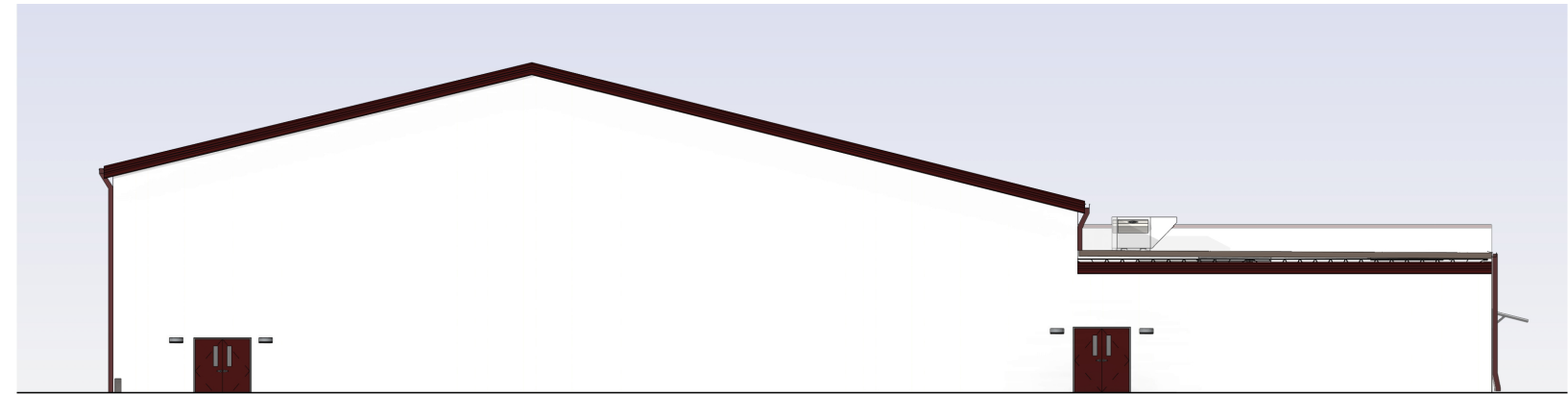
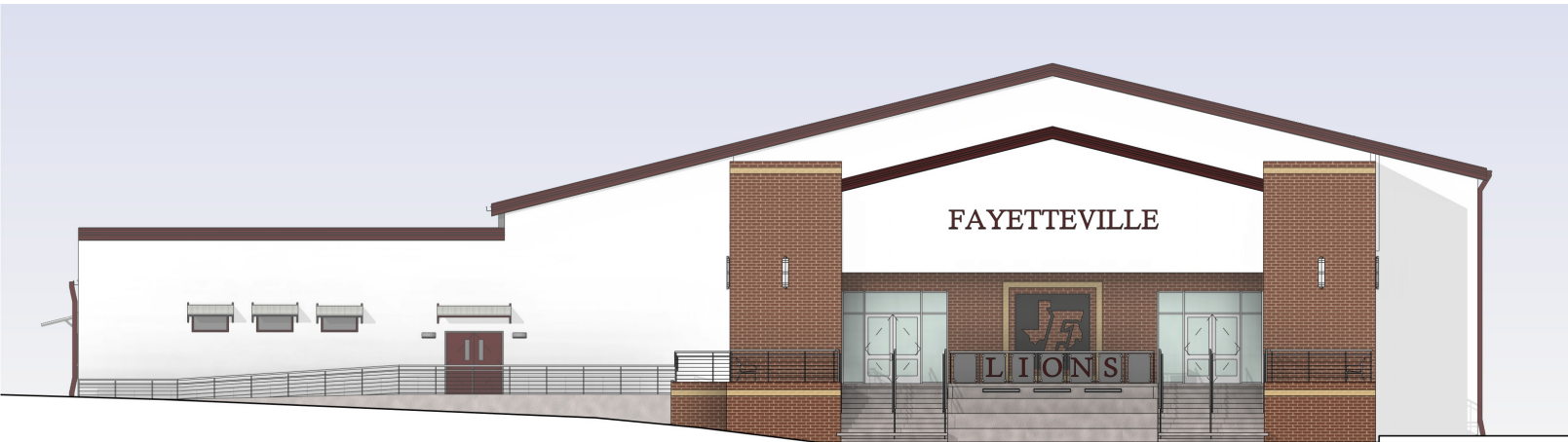
Gymnasium - Lower Cut

Department Legend

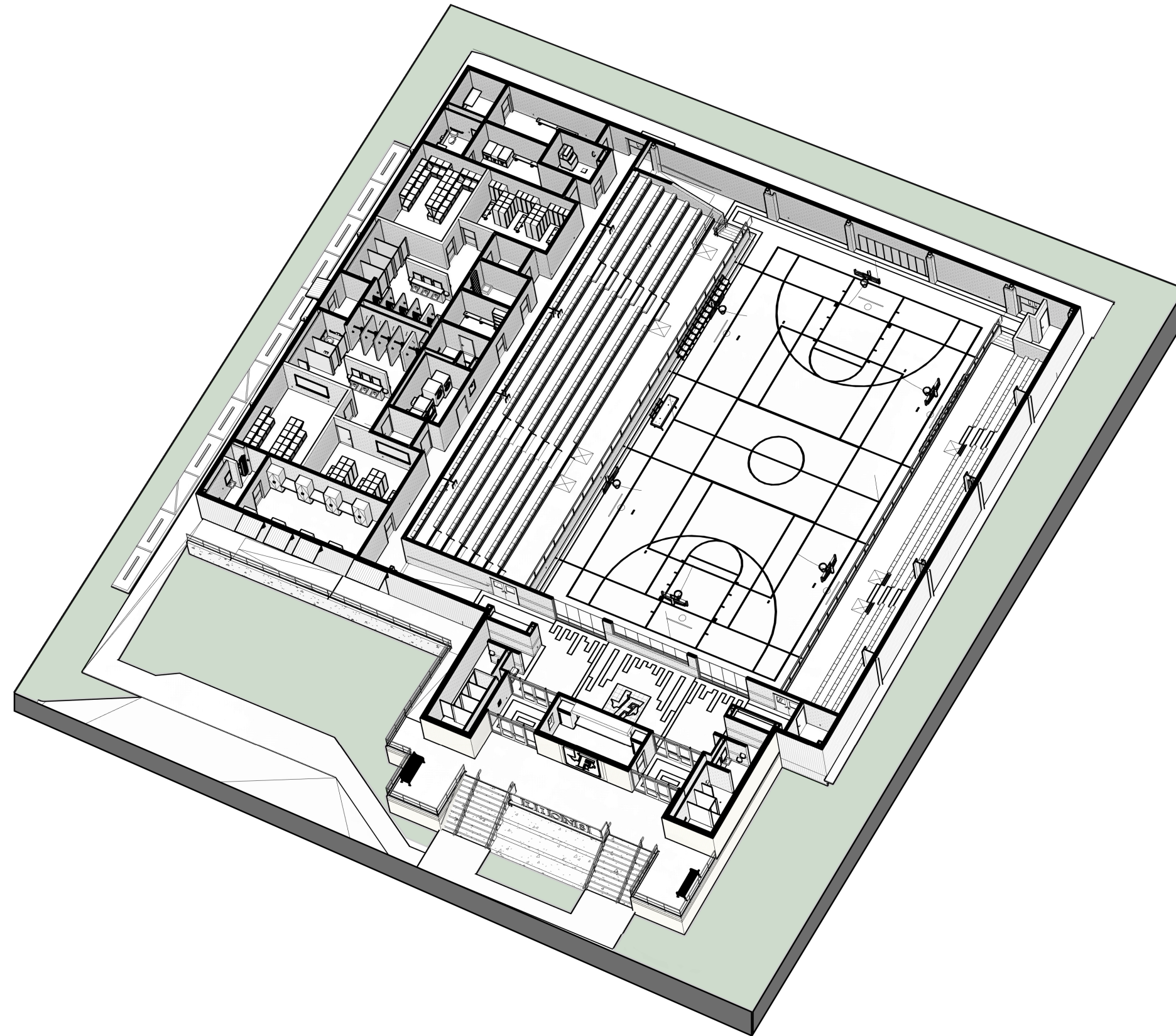
- CIRCULATION
- ELECTRICAL/ JANITOR/ RISER
- GYMNASIUM
- LOCKER ROOM
- RESTROOM
- STORAGE
- TRAINER ROOM

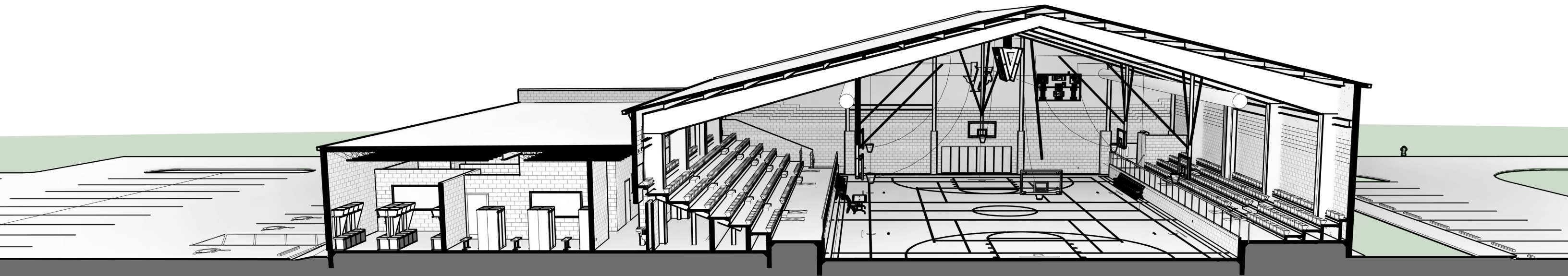
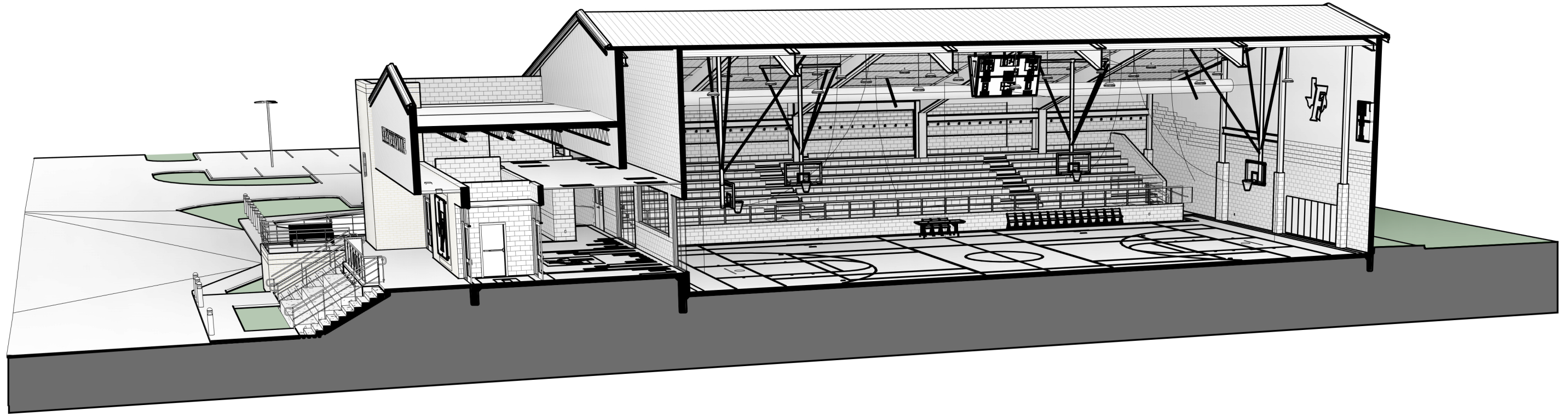


Locker Rooms

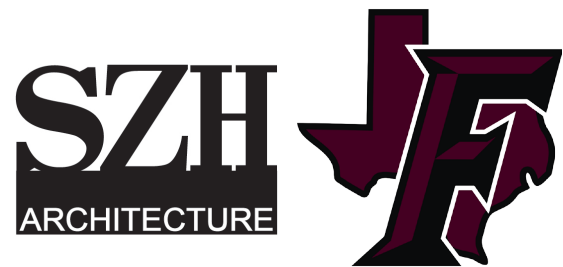


Elevations

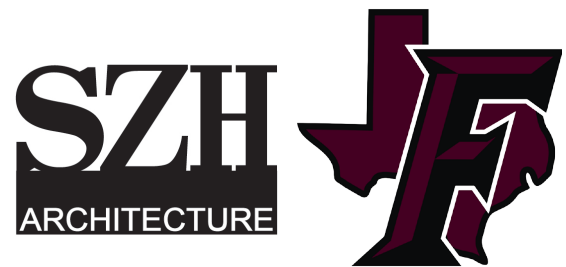




TEAM MEMBERS
DESIGN OBJECTIVES
PROGRAM
RENDERS



Renders



Renders











SZH
ARCHITECTURE



DESIGN DEVELOPMENT PACKET
Fayetteville ISD | 2017 Bond Program - 08.28.2017