



*Wharton County
Junior College*



Monthly Financial Reports

January 2023



Revenue & Expenditure Summary

	FISCAL 2023				FISCAL 2022			% OF PRIOR YR ACTUAL
	Current Month	Y-T-D ACTUAL	Budget	% of Budget	Y-T-D ACTUAL	Budget	% of Budget	
Fund 1000								
Revenues:								
State appropriations	\$ -	\$ 4,001,261	\$ 9,305,255	43.00%	\$ 4,001,261	\$ 9,305,255	43.00%	100%
Tuition and Fees	2,051,096	14,943,217	19,071,607	78.35%	14,805,001	19,874,485	74.49%	101%
Advalorem Taxes	4,378,653	7,599,624	8,756,525	86.79%	6,003,518	7,675,517	78.22%	127%
Mandatory Transfers	-	-	1,350,273	0.00%	-	327,215	0.00%	0%
Non-mandatory Transfers	-	-	2,185,483	0.00%	-	2,657,612	0.00%	0%
Other Revenues	30,942	35,145	681,945	5.15%	(5,392)	439,901	-1.23%	-652%
Total Revenues	6,460,691	26,579,247	41,351,088	64.28%	24,804,388	40,279,985	61.58%	107%
Expenditures:								
Salaries	1,558,734	8,405,277	22,924,708	36.66%	8,818,170	23,212,016	37.99%	95%
Employee Benefits	387,802	1,846,945	6,045,646	30.55%	1,923,521	5,974,322	32.20%	96%
Capital Expenditures	45,572	117,863	903,540	-	-	34,406	-	0%
Mandatory Transfers	-	184,509	367,800	50.17%	183,344	367,800	49.85%	101%
Non-mandatory Transfers	-	-	-	-	-	-	-	0%
Other Expenditures	1,003,480	4,305,751	11,109,394	38.76%	4,052,060	10,691,441	37.90%	106%
Total expenditures	2,995,588	14,860,345	41,351,088	35.94%	14,977,094	40,279,985	37.18%	99%
Net increase/ (decrease) in net assets	\$ 3,465,103	\$ 11,718,902			\$ 9,827,294			
Less Outstanding encumbrances		(1,877,320)			(1,507,241)			
Net increase less encumbrances		\$ 9,841,582			\$ 8,320,053			

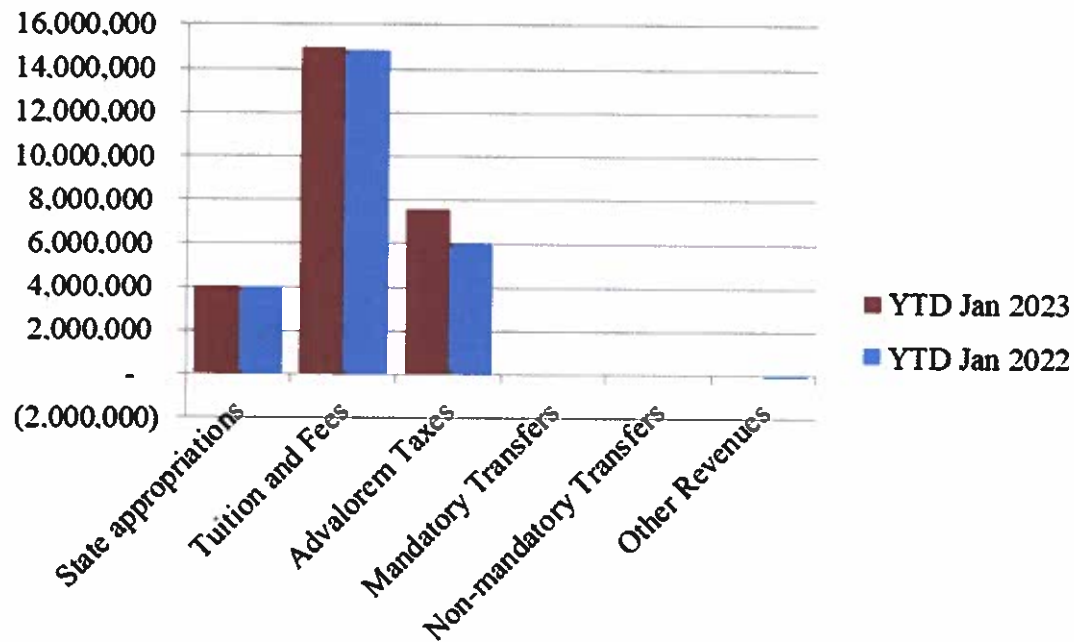
* Note: Net student receivables in the amount of \$ 4,160,185.99 are currently outstanding. Tuition and fees are subject to collection in future periods.



Wharton County
Junior College



Year to Date Revenues



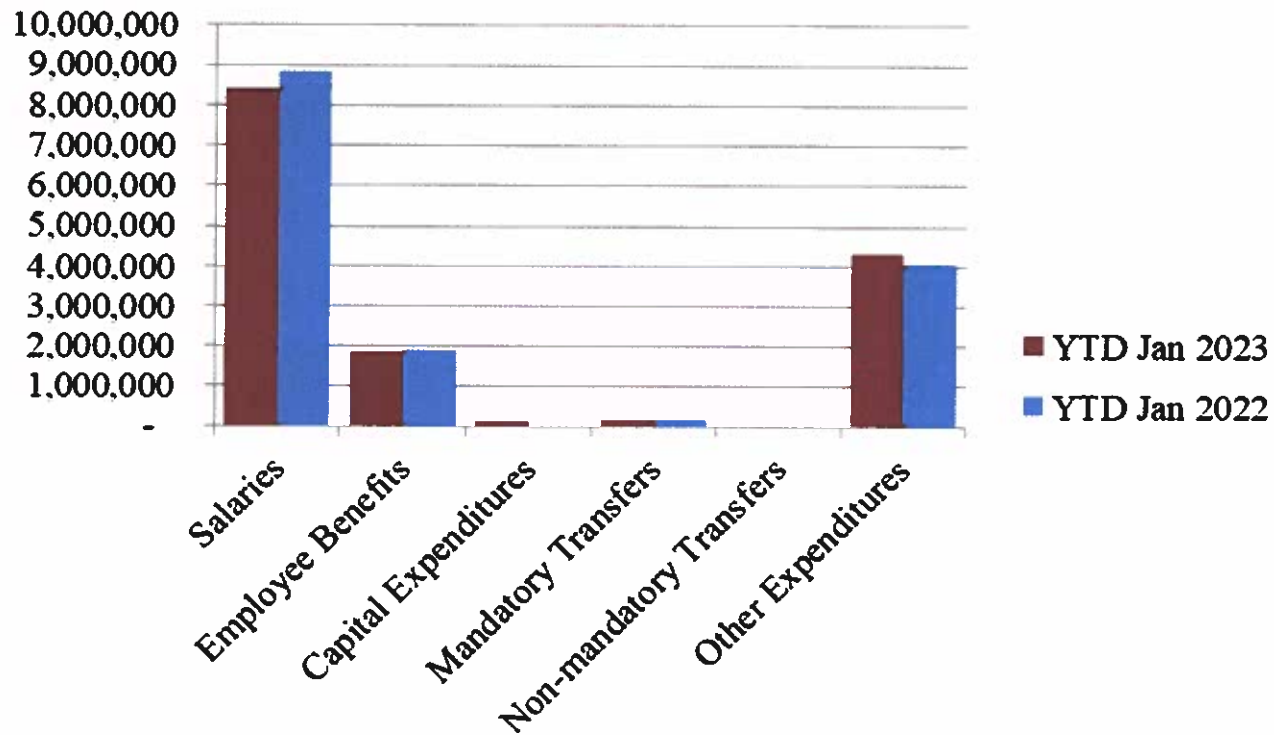
- Increase in Property Taxes is due to a timing difference of the receipts



Wharton County
Junior College

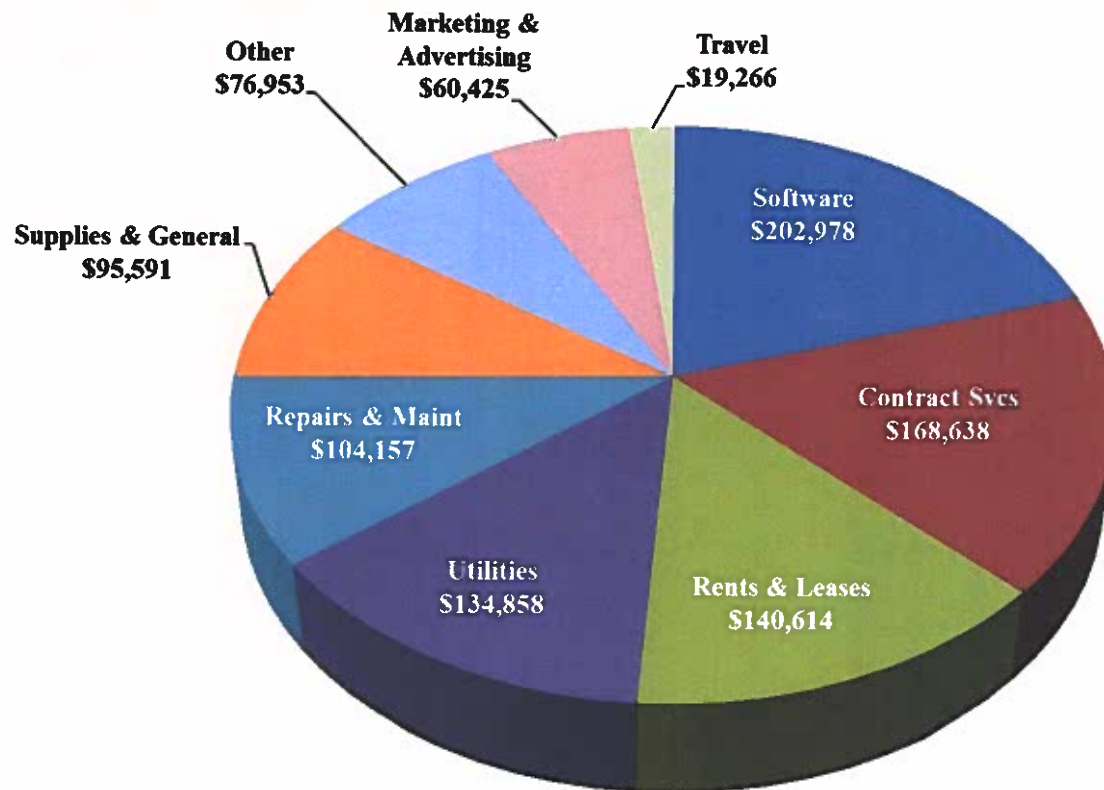


Year to Date Expenses





Other Expenses for January



- Software expenditures include:
 - Touchnet student payment software, \$81k
 - Assessment Technologies instructional software, \$66k
- Contract Services include \$111k to University of Houston for shared library services



Analysis of Student Receivable Outstanding As of January 31, 2023

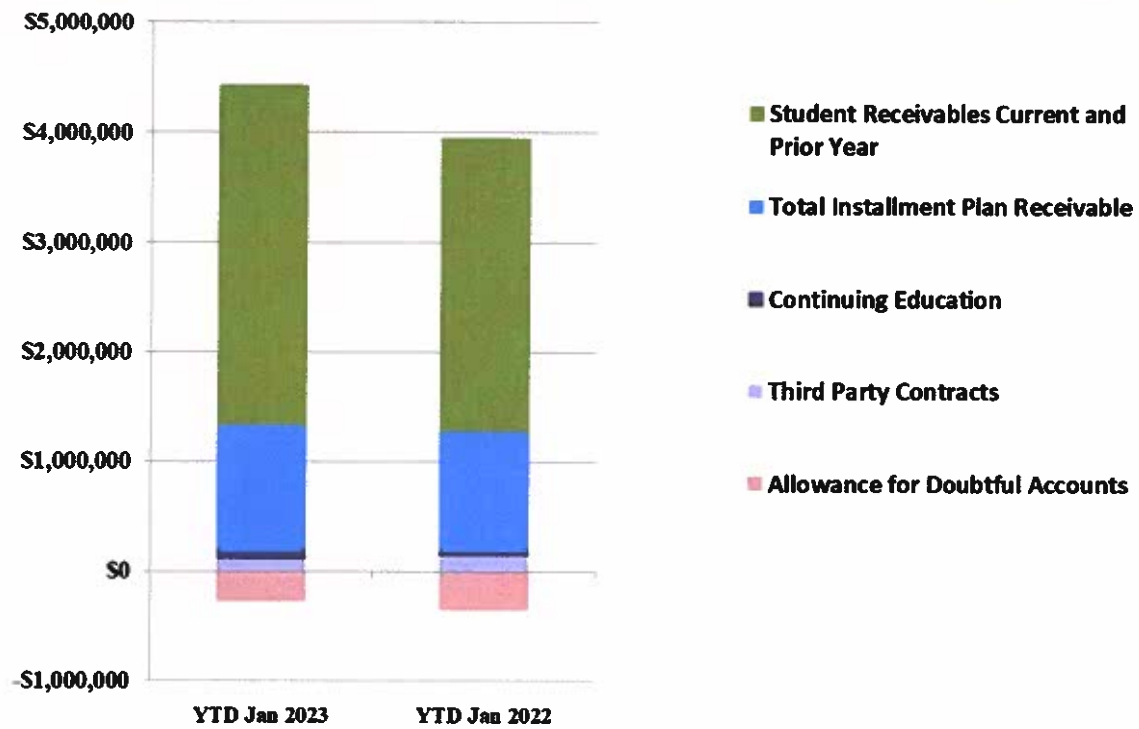
	2023	2022
Student Receivables Current and Prior Yr.	\$ 3,093,029.63	\$ 2,663,120.72
Installment Plan Receivable Due Fall Semester	\$ 107,935.44	\$ 49,294.71
Installment Plan Receivable Due Spring Semester	979,896.94	887,137.22
Installment Plan Receivable Summer I & II	0.00	0.00
Installment Plan Receivable Prior Years	79,953.73	174,640.27
Total Installment Plan Receivable	\$ 1,167,786.11	\$ 1,111,072.20
Third Party Contracts Receivable	\$ 106,249.37	\$ 138,714.29
Continuing Education Receivable	67,284.00	35,193.00
Allowance for Doubtful Accounts	(274,163.12)	(357,302.89)
Net Accounts Receivable	\$ 4,160,185.99	\$ 3,590,797.32



Wharton County
Junior College



AR by Category



COMBINED BALANCE SHEET

(Funds included: GOVERNMENTAL FUND TYPES)

Governmental Fund Types

	Auxiliary Enterprise	Current Unrestricted	Restricted Funds	Current Year 2023	Prior Year 2022
ASSETS and OTHER DEBITS:					
ASSETS:					
Cash	-16,269	3,042,344	863,136	3,889,211	3,707,633
Cash Investments	871,483	19,001,679	1,109,979	20,983,141	21,122,474
Accounts Receivable	245,562	4,170,117	5,681	4,421,360	3,832,088
Taxes Receivable		2,501,765	--	2,501,765	1,391,753
Local, St & Fed Agency Receivable		--	433,045	433,045	1,393,606
Deposits		--	--	--	4,892
Due From Other Funds		600,000	17,373	617,373	341,060
Prepaid Expense		--	--	--	39,679
Property, Plant & Equipment		--	--	--	--
Deferred Outflows		9,340,694	--	9,340,694	10,285,070
TOTAL ASSETS AND OTHER DEBITS:	1,100,777	38,656,598	2,429,213	42,186,588	42,118,256
Liabilities, equity and other credits					
LIABILITIES:					
Accounts Payable	1,500	202,793	17	204,309	360,942
Employee Benefits Payable	615	191,673	--	192,288	230,688
Payroll Taxes Payable		194	--	194	-1,678
Accrued Liabilities		--	--	--	--
Deferred Revenue	1,000	--	502,385	503,385	728,708
Long Term Debt		--	--	--	--
Net Pension Liability		4,103,835	--	4,103,835	9,228,835
Net OPEB Liability		32,567,646	--	32,567,646	32,567,646
Lease Liab - Long Term		--	--	--	--
Deposits Payable	65,752	11,878	--	77,630	73,663
Due To Other Funds		17,373	600,000	617,373	341,060
Scholarships-Designated Donations		--	35,036	35,036	67,862
Scholarships-Non-designated		--	1,021,052	1,021,052	732,583
Donatio		--	--	--	--
Deferred Inflows		9,710,668	--	9,710,668	6,185,814
TOTAL LIABILITIES:	68,867	46,806,060	2,158,489	49,033,415	50,516,123
EQUITY AND OTHER CREDITS:					
Control Accounts		--	--	--	--
Fund Balances		--	--	--	--
Prior Year Fund Balance		-19,313,888	--	-19,313,888	-19,412,977
Endowment Fund-Original		--	--	--	--
Endowment Fund-Income		--	--	--	--

Wharton County Junior College
 Combined Balance Sheet--All Fund Types and Account Groups
 31-JAN-2023
 (With comparative totals for 31-JAN-2022)
 (amounts expressed in dollars)

Governmental Fund Types

	Auxiliary Enterprise	Current Unrestricted	Restricted Funds	Current Year 2023	Prior Year 2022
EQUITY AND OTHER CREDITS:					
FB Professional Development		--	--		
FB Salary Equity		--	--		
FB Capital Equipment		--	--		
FB Investment Gain And Loss		--	--		
Fund Balance Receivables		--	--	-	-
Reserved-Undesignated		--	--		
FBTC Operating Fund Balance		--	--		
Plant Fund Balance		--	--		
Bond Fund Balance		--	--		
Scholarship		--	--		
Fund Balance-Rounding Diff		--	-	-	-
Fund Balances:					
Reserve for Encumbrance	42,521	1,877,320	364,762	2,284,603	3,097,725
Fund Balance	989,389	9,287,107	-94,038	10,182,458	7,917,386
Reserve For Operations		--	--		
TOTAL EQUITY AND OTHER CREDITS:	1,031,910	-8,149,462	270,724	-6,846,827	-8,397,867
TOTAL LIABILITIES, EQUITY AND OTHER CREDITS:	1,100,777	38,656,598	2,429,213	42,186,588	42,118,256

Proprietary Fund Types

	Agency Funds	Current Year 2023	Prior Year 2022
ASSETS and OTHER DEBITS:			
ASSETS:			
Cash	81,234	81,234	189,945
Cash Investments	162,141	162,141	59,124
Accounts Receivable	-	-	-
Taxes Receivable			
Local, St & Fed Agency Receivable			
Deposits			
Due From Other Funds			
Prepaid Expense			
Property, Plant & Equipment			
Deferred Outflows			
TOTAL ASSETS AND OTHER DEBITS:	243,375	243,375	249,069
Liabilities, equity and other credits			
LIABILITIES:			
Accounts Payable			
Employee Benefits Payable	-	-	-
Payroll Taxes Payable			
Accrued Liabilities			
Deferred Revenue			
Long Term Debt			
Net Pension Liability			
Net OPEB Liability			
Lease Liab - Long Term			
Deposits Payable	240,930	240,930	248,891
Due To Other Funds			
Scholarships-Designated Donations			
Scholarships-Non-designated			
Donatio			
Deferred Inflows			
TOTAL LIABILITIES:	240,930	240,930	248,891
EQUITY AND OTHER CREDITS:			
Control Accounts	2,445	2,445	178
Fund Balances			
Prior Year Fund Balance			
Endowment Fund-Original			
Endowment Fund-Income			

Wharton County Junior College
 Combined Balance Sheet--All Fund Types and Account Groups
 31-JAN-2023
 (With comparative totals for 31-JAN-2022)
 (amounts expressed in dollars)

Proprietary Fund Types

	Agency Funds	Current Year 2023	Prior Year 2022
<hr/>			
EQUITY AND OTHER CREDITS:			
FB Professional Development			
FB Salary Equity			
FB Capital Equipment			
FB Investment Gain And Loss			
Fund Balance Receivables			
Reserved-Undesignated			
FBTC Operating Fund Balance			
Plant Fund Balance			
Bond Fund Balance			
Scholarship			
Fund Balance-Rounding Diff			
Fund Balances:			
Reserve for Encumbrance			
Fund Balance			
Reserve For Operations			
TOTAL EQUITY AND OTHER CREDITS:	2,445	2,445	178
TOTAL LIABILITIES,	243,375	243,375	249,069
EQUITY AND OTHER CREDITS:			
	=====		

Wharton County Junior College
 Combined Balance Sheet--All Fund Types and Account Groups
 31-JAN-2023
 (With comparative totals for 31-JAN-2022)
 (amounts expressed in dollars)

Fiduciary Fund Types

	Endowment Funds	Quasi Endowment Fund	Current Year 2023	Prior Year 2022
ASSETS and OTHER DEBITS:				
ASSETS:				
Cash	239,908	--	239,908	820,285
Cash Investments	12,689,326	--	12,689,326	13,092,231
Accounts Receivable	2,194	--	2,194	14,531
Taxes Receivable		--		
Local, St & Fed Agency Receivable		--		
Deposits		--		
Due From Other Funds		--		
Prepaid Expense		--		
Property, Plant & Equipment		--		
Deferred Outflows		--		
TOTAL ASSETS AND OTHER DEBITS:	12,931,429		12,931,429	13,927,048
Liabilities, equity and other credits				
LIABILITIES:				
Accounts Payable		--		
Employee Benefits Payable		--		
Payroll Taxes Payable		--		
Accrued Liabilities		--		
Deferred Revenue		--		
Long Term Debt		--		
Net Pension Liability		--		
Net OPEB Liability		--		
Lease Liab - Long Term		--		
Deposits Payable		--		
Due To Other Funds		--		
Scholarships-Designated Donations		--		
Scholarships-Non-designated		--		
Donatio		--		
Deferred Inflows		--		
TOTAL LIABILITIES:				
EQUITY AND OTHER CREDITS:				
Control Accounts		--		
Fund Balances		--		
Prior Year Fund Balance		--		
Endowment Fund-Original		--		
Endowment Fund-Income		--		

Wharton County Junior College
 Combined Balance Sheet--All Fund Types and Account Groups
 31-JAN-2023
 (With comparative totals for 31-JAN-2022)
 (amounts expressed in dollars)

Fiduciary Fund Types

	Endowment Funds	Quasi Endowment Fund	Current Year 2023	Prior Year 2022
EQUITY AND OTHER CREDITS:				
FB Professional Development		--		
FB Salary Equity		--		
FB Capital Equipment		--		
FB Investment Gain And Loss		--		
Fund Balance Receivables		--		
Reserved-Undesignated		--		
FBTC Operating Fund Balance		--		
Plant Fund Balance		--		
Bond Fund Balance		--		
Scholarship		--		
Fund Balance-Rounding Diff		--		
Fund Balances:				
Reserve for Encumbrance		--		
Fund Balance	12,931,429	--	12,931,429	13,927,048
Reserve For Operations		--		
TOTAL EQUITY AND OTHER CREDITS:	12,931,429		12,931,429	13,927,048
TOTAL LIABILITIES, EQUITY AND OTHER CREDITS:	12,931,429		12,931,429	13,927,048

Wharton County Junior College
 Combined Balance Sheet--All Fund Types and Account Groups
 31-JAN-2023
 (With comparative totals for 31-JAN-2022)
 (amounts expressed in dollars)

Account Groups

	Debt Retirement Bond Fund	Investment in Plant Fund	Unexpended Plant Fund	Repair and Replacement	Current Year 2023	Prior Year 2022
ASSETS and OTHER DEBITS:						
ASSETS:						
Cash	177,750	--	-7,401,470	7,452,609	228,890	476,997
Cash Investments	392,293	--	9,050,859	--	9,443,153	9,751,479
Accounts Receivable	--	--	4,587	--	4,587	1,207
Taxes Receivable	--	--	--	--	--	--
Local, St & Fed Agency Receivable	--	--	--	--	--	--
Deposits	--	--	--	--	--	--
Due From Other Funds	--	--	--	--	--	--
Prepaid Expense	--	--	--	--	--	--
Property, Plant & Equipment	--	46,488,669	--	--	46,488,669	46,315,689
Deferred Outflows	--	--	--	--	--	--
TOTAL ASSETS AND OTHER DEBITS:	570,044	46,488,669	1,653,977	7,452,609	56,165,298	56,545,373
Liabilities, equity and other credits						
LIABILITIES:						
Accounts Payable	--	--	--	--	--	--
Employee Benefits Payable	--	--	--	--	--	--
Payroll Taxes Payable	--	--	--	--	--	--
Accrued Liabilities	--	1,339,512	--	--	1,339,512	1,351,645
Deferred Revenue	--	--	--	--	--	--
Long Term Debt	--	365,584	--	--	365,584	716,168
Net Pension Liability	--	--	--	--	--	--
Net OPEB Liability	--	--	--	--	--	--
Lease Liab - Long Term	--	8,988,334	--	--	8,988,334	8,988,334
Deposits Payable	--	--	--	--	--	--
Due To Other Funds	--	--	--	--	--	--
Scholarships-Designated Donations	--	--	--	--	--	--
Scholarships-Non-designated	--	--	--	--	--	--
Donatio	--	--	--	--	--	--
Deferred Inflows	--	--	--	--	--	--
TOTAL LIABILITIES:		10,693,430			10,693,430	11,056,147
EQUITY AND OTHER CREDITS:						
Control Accounts	--	--	--	--	--	--
Fund Balances	--	--	--	--	--	--
Prior Year Fund Balance	--	--	--	--	--	--
Endowment Fund-Original	--	--	--	--	--	--
Endowment Fund-Income	--	--	--	--	--	--

Wharton County Junior College
 Combined Balance Sheet--All Fund Types and Account Groups
 31-JAN-2023
 (With comparative totals for 31-JAN-2022)
 (amounts expressed in dollars)

Account Groups

	Debt Retirement Bond Fund	Investment in Plant Fund	Unexpended Plant Fund	Repair and Replacement	Current Year 2023	Prior Year 2022
EQUITY AND OTHER CREDITS:						
FB Professional Development		--	--	--		
FB Salary Equity		--	--	--		
FB Capital Equipment		37,424,390	--	--	37,424,390	35,649,002
FB Investment Gain And Loss		--	--	--		
Fund Balance Receivables		--	--	--		
Reserved-Undesignated		--	--	--		
FBTC Operating Fund Balance		--	--	--		
Plant Fund Balance		--	--	--		
Bond Fund Balance		--	--	--		
Scholarship		--	--	--		
Fund Balance-Rounding Diff		--	--	--		
Fund Balances:						
Reserve for Encumbrance		--	--	--		
Fund Balance	570,044	118,320	590,724	6,768,392	8,047,479	9,840,223
Reserve For Operations		--	--	--		
TOTAL EQUITY AND OTHER CREDITS:	570,044	37,542,709	590,724	6,768,392	45,471,869	45,489,226
TOTAL LIABILITIES,	570,044	48,236,139	590,724	6,768,392	56,165,298	56,545,373
EQUITY AND OTHER CREDITS:						

Wharton County Junior College
 Combined Balance Sheet--All Fund Types and Account Groups
 31-JAN-2023
 (With comparative totals for 31-JAN-2022)
 (amounts expressed in dollars)

Memorandum Only

	Current Year 2023	Prior Year 2022
ASSETS and OTHER DEBITS:		
ASSETS:		
Cash	4,439,243	5,194,861
Cash Investments	43,277,761	44,025,308
Accounts Receivable	4,428,141	3,847,827
Taxes Receivable	2,501,765	1,391,753
Local, St & Fed Agency Receivable	433,045	1,393,606
Deposits		4,892
Due From Other Funds	617,373	341,060
Prepaid Expense		39,679
Property, Plant & Equipment	46,488,669	46,315,689
Deferred Outflows	9,340,694	10,285,070
TOTAL ASSETS AND OTHER DEBITS:	111,526,690	112,839,745
Liabilities, equity and other credits		
LIABILITIES:		
Accounts Payable	204,309	360,942
Employee Benefits Payable	192,288	230,688
Payroll Taxes Payable	194	-1,678
Accrued Liabilities	1,339,512	1,351,645
Deferred Revenue	503,385	728,708
Long Term Debt	365,584	716,168
Net Pension Liability	4,103,835	9,228,835
Net OPEB Liability	32,567,646	32,567,646
Lease Liab - Long Term	8,988,334	8,988,334
Deposits Payable	318,560	322,554
Due To Other Funds	617,373	341,060
Scholarships-Designated Donations	35,036	67,862
Scholarships-Non-designated	1,021,052	732,583
Donatio		
Deferred Inflows	9,710,668	6,185,814
TOTAL LIABILITIES:	59,967,775	61,821,161
EQUITY AND OTHER CREDITS:		
Control Accounts	2,445	178
Fund Balances		
Prior Year Fund Balance	-19,313,888	-19,412,977
Endowment Fund-Original		
Endowment Fund-Income		
FB Professional Development		
FB Salary Equity		
FB Capital Equipment	37,424,390	35,649,002
FB Investment Gain And Loss		

Wharton County Junior College
 Combined Balance Sheet--All Fund Types and Account Groups
 31-JAN-2023
 (With comparative totals for 31-JAN-2022)
 (amounts expressed in dollars)

Memorandum Only

	Current Year 2023	Prior Year 2022
Fund Balance Receivables	-	-
Reserved-Undesignated	-	-
FBTC Operating Fund Balance	-	-
Plant Fund Balance	-	-
Bond Fund Balance	-	-
Scholarship	-	-
Fund Balance-Rounding Diff	-	-
Fund Balances:		
Reserve for Encumbrance	2,284,603	3,097,725
Fund Balance	31,161,366	31,684,657
Reserve For Operations		
TOTAL EQUITY AND OTHER CREDITS:	51,558,915	51,018,584
TOTAL LIABILITIES, EQUITY AND OTHER CREDITS:	111,526,690	112,839,745