

LJSD Board of Trustees
Facilities Report - September 17, 2025

Updates:

A sampling of completed work since the last board meeting:

- Backflow preventer is in for the LHS field area - installed
 - Passed backflow test, locked with a chain
- Over 160 work orders completed in August
- LMS carpet completed
- LHS - visitor bleacher assembled
- Mowing frequency has increased due to properly fertilized fields growing faster and staying greener.
- The boiler for TLE has arrived
- LMS - floor and bleachers complete
- All 500+ HVAC systems were uploaded by hand into FMX to keep more accurate records of maintenance, including PM.
- Concrete: working on the final pour at SLE, waiting on a special-order steel plate to come back from the galvanizing dip to finish LMS. Pre-punchlist walk thru is being done, then final punchlist creation will be done by us. Repairs will be done around our schedule to not impede school operations where possible.
- Asphalt seal coating and painting are still being done. Working with the schools to make sure we address handicap parking and no-parking areas.

A sampling of projects in progress:

- Senske is scheduled for the rest of the year.

Upcoming Projects:

- Doors to the wrestling room, provided by Board Member Quimby, may not fit properly; we are working on ideas and alternatives.
- Replace the boiler at TLE
- Exterior door bid being prepared - LHS and MV - modernization funds

Attached is a copy of the workflow from FMX. This is the first month of using the new system, so the PM was not uploaded at that time. This gives a sampling of work flow for the month of August.

Work Summary Dashboard

Filters:

- Module: Include all
- Type: Include all
- Building: Include all
- Current Status: Include all
- Due Date: Include all
- Created Date: 7/30/25 to 8/29/25
- Completed Date: Include all

Work Requests

Created

169

Work Requests

Pending Assignment

1

Work Requests

Open - Overdue

12

Work Requests

Open - On Time

2

Work Requests

On Hold

3

Work Requests

Completed

152

Planned Maintenance

Total Tasks

0

Planned Maintenance

Outstanding

0

Planned Maintenance

Open - Overdue

0

Planned Maintenance

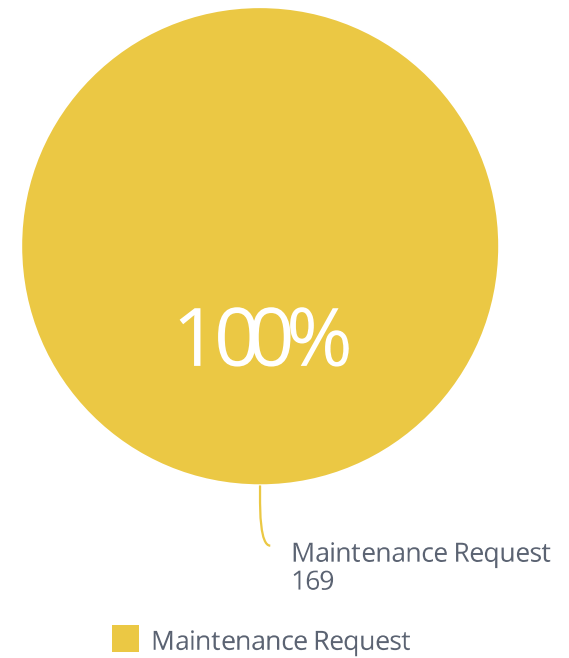
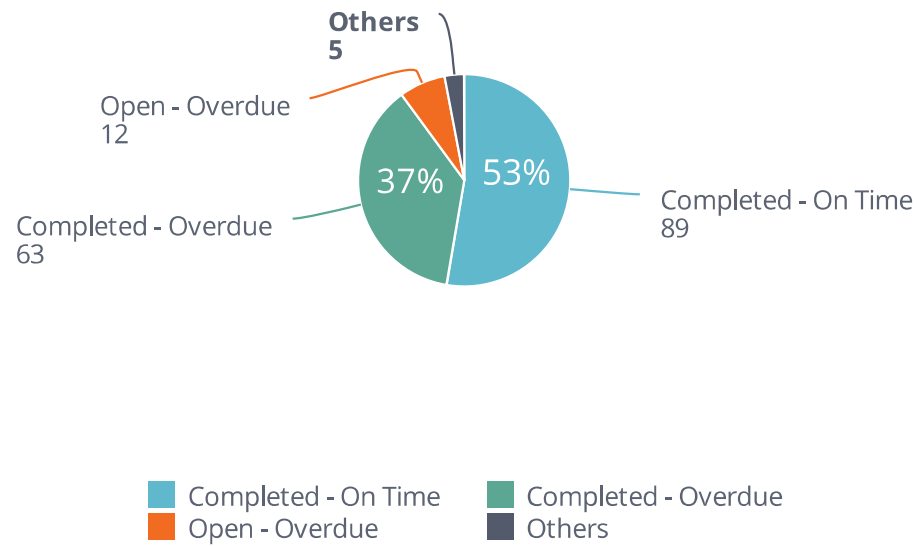
Open - On Time

0

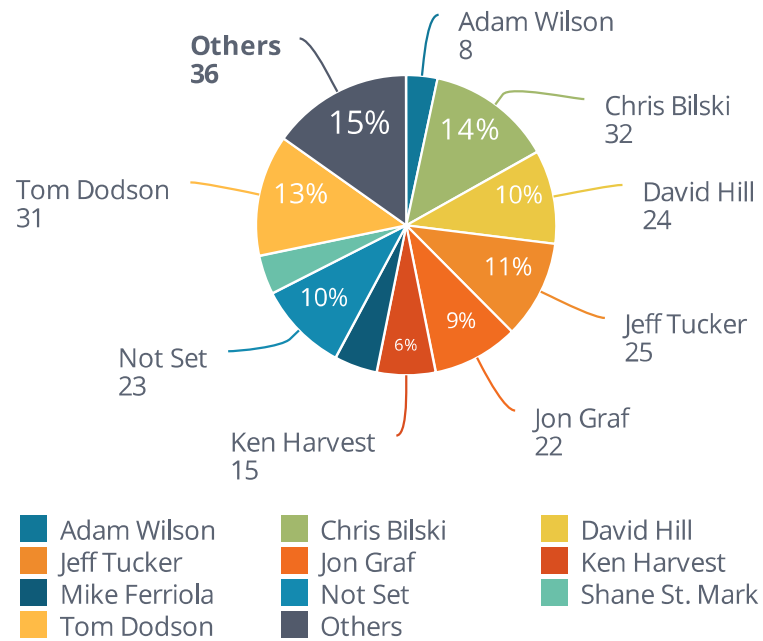
Planned Maintenance

Completed

0



PM and Work Requests Assigned By User



PM and Work Requests By Type

